

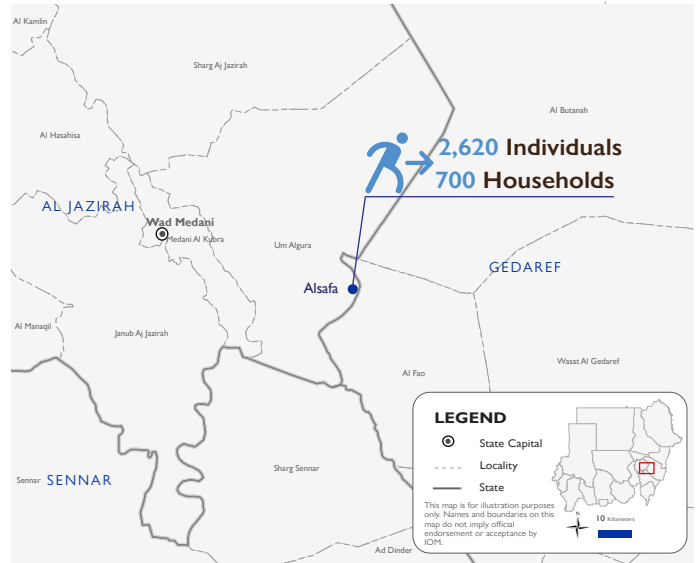


The DTM Emergency Event Tracking (EET) is deployed to track sudden displacement and population movements, provide more frequent updates on the scale of displacement, and quantify the affected population when needed. As a subcomponent of the new Mobility Tracking methodology in Sudan ([Round Two](#)), and activated on a need basis, EET utilises a broad network of key informants to capture best estimates of the affected population presence per location – a useful tool for humanitarian response planning and design.

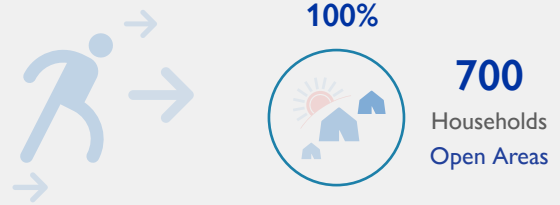
Event Overview



DTM teams activated EET to monitor displacement of individuals affected by heavy rainfall in Gedaref state, causing flooding in Alsafa village in Um Algura locality, Al Jazirah state on 28 August 2021. The first EET update estimates that a total number of 2,620 individuals (700 households) have been displaced from their homes in Alsafa village. Field teams report that all affected households have had their houses completely destroyed. Data from the shelter indicator suggests that all IDPs are currently seeking shelter in informal settlements on nearby higher ground around the village. Field teams indicate that no individuals were killed or injured, and 60 individuals reported lost goods, cattle, and/or livestock. All displaced individuals are Sudanese nationals. DTM teams identified at least 479 cases of additional vulnerabilities in need of assistance and support. Based on a ranking scale, the three priority needs across the caseload are Emergency Shelter, Education and Non-Food Items.

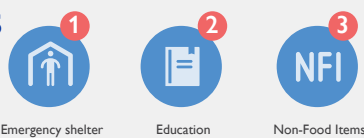


Shelter Indicator

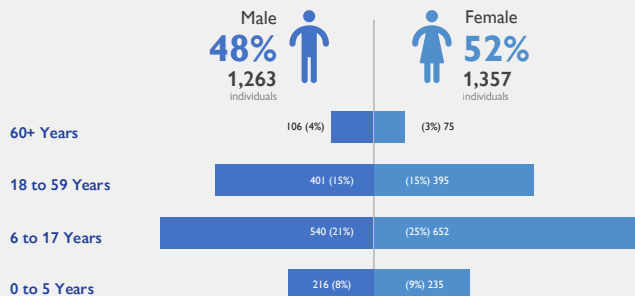


Priority Needs

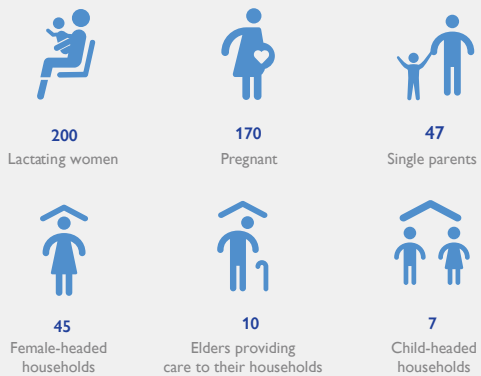
(Ranking scale)



Demographics



Vulnerabilities



IOM DISCLAIMER

The opinions expressed in the report are those of the authors and do not necessarily reflect the views of the International Organization for Migration (IOM). The designations employed and the presentation of material throughout the report do not imply the expression of any opinion whatsoever on the part of IOM concerning the legal status of any country, territory, city or area, or of its authorities, or concerning its frontiers or boundaries.

IOM is committed to the principle that humane and orderly migration benefits migrants and society. As an intergovernmental organization, IOM acts with its partners in the international community to: assist in the meeting of operational challenges of migration; advance understanding of migration issues; encourage social and economic development through migration; and uphold the human dignity and well-being of migrants.

Return Intention

Data collected through the return intention indicator suggests that all IDPs intend to return to their location of origin (100%).