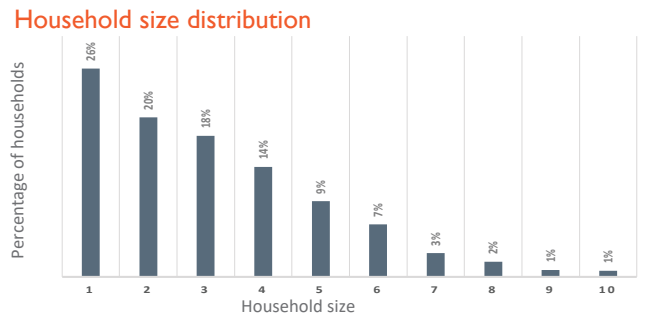
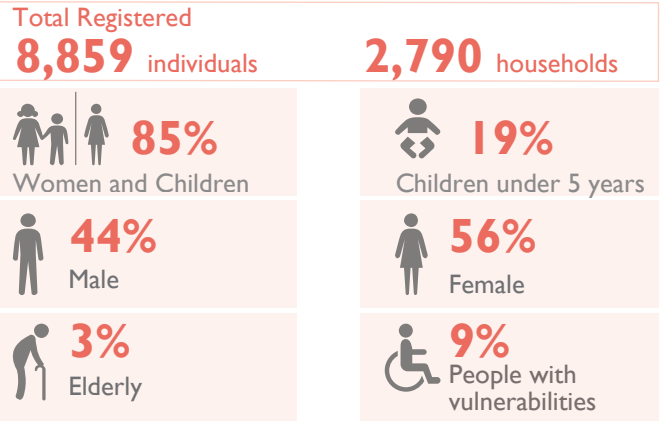
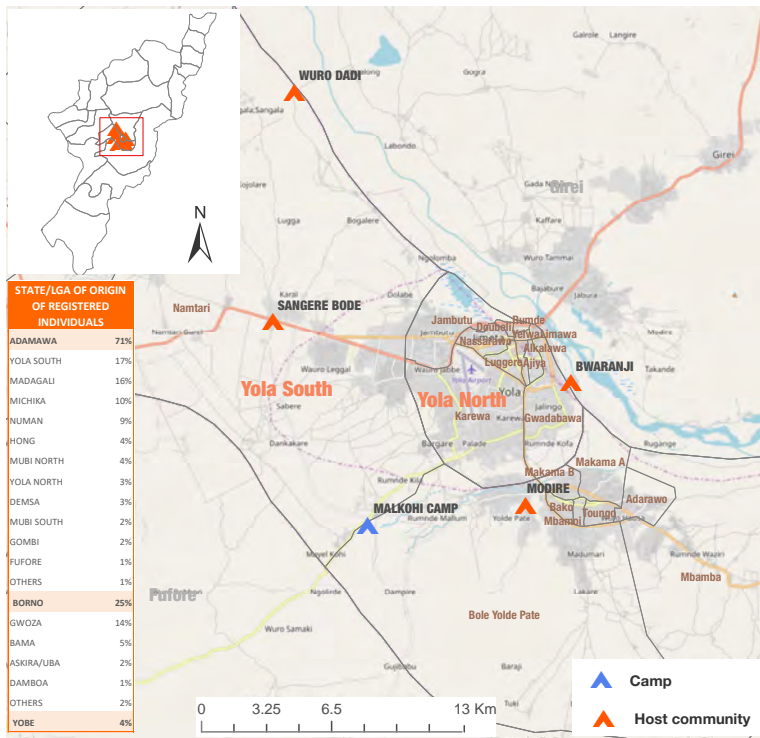


Biometric Registration | 10 November 2018



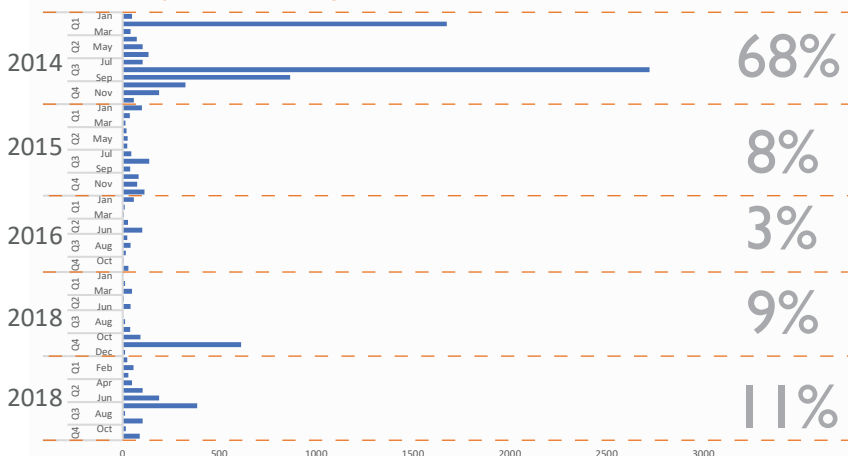
The recently concluded Biometric Registration in Yola South and North within the period of 24 September – 10 November 2018, has brought the total number of Displaced persons in Baga to 8, 859 individuals (2,790 households). The average family size within the location is 3, with 46 per cent of families comprising of 1-2 members; 32 per cent comprising of 3-4 members; 16 per cent comprising of 5-6 members; 5 per cent comprising of 7-8 members; and 2 per cent comprising of 9 and above members.

During the registration exercise, the enumerators collected vulnerability data to identify individuals who may require additional humanitarian assistance. Out of the total population registered, 9 per cent are people experiencing at least one of the vulnerabilities (shown below). Vulnerability figures are obtained through interviews with heads of households, in the presence of other family members.

71 per cent of the IDPs in Yola North and South were originally from LGAs in Adamawa state, out of the 71 per cent: 17 and 3% were displaced from wards in Yola South and North LGA respectively, 16% from Madagali, 10% from Michika, 9% from Numan, 4% from Numan, 4% from Hong, 4% from Mubi North, 3% from Demsa, 2% from Mubi South, 2% from Gombi, 1% from Furore and % from others; **25 per cent** of the IDPs were displaced from Borno state, the 25 per cent comprises of IDPs from Gwoza (14%), Bama (5%), Askira/Uba (2%), Damboa (1%) and 2% from other LGAs in Borno and the remaining **4 per cent** from Yobe state.

Location Details			Total				Male				Female			
Place of registration	Location Type	SSID	HH	Ind	Male	Female	0-4 y	5-17 y	18-59 y	60+ y	0-4 y	5-17 y	18-59 y	60+ y
BWARANJI	HOST COMMUNITY	AD_H502	342	1,257	573	684	100	217	240	16	117	247	297	23
MALKOHI CAMP	CAMP	AD_S003	384	1,386	666	720	99	334	199	34	119	269	305	27
MODIRE	HOST COMMUNITY	AD_H521	1,080	3,136	1,260	1,876	312	565	363	20	328	608	897	43
SANGERE BODE	HOST COMMUNITY	AD_H525	731	2,390	1,032	1,358	211	520	275	26	220	511	597	30
WURO DADI	HOST COMMUNITY	AD_H526	253	690	347	343	64	115	154	14	72	96	152	23
Grand Total			2,790	8,859	3,878	4,981	786	1,751	1,231	110	856	1,731	2,248	146
				100%	44%	56%	9%	20%	14%	1%	10%	20%	25%	2%

Period of Displacement of Registered Individuals



Vulnerabilities

9 per cent of the population are vulnerable

