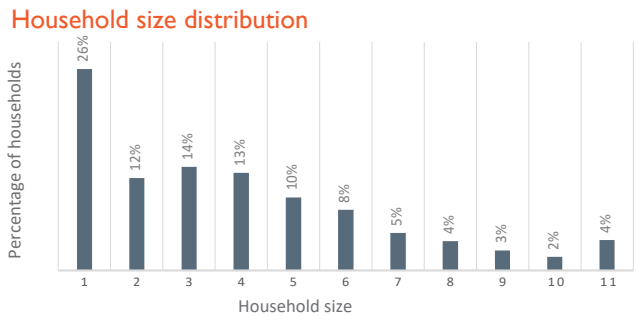
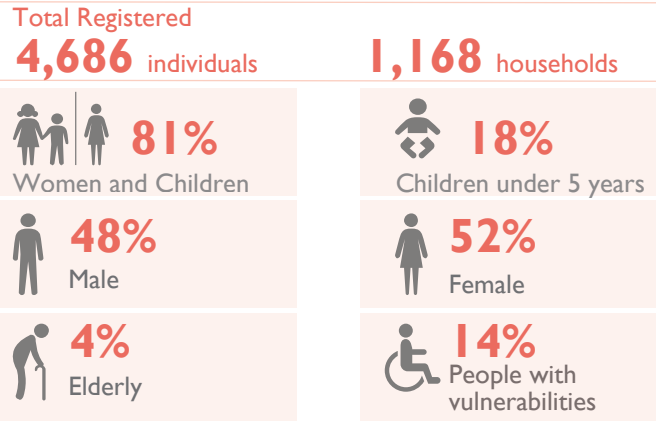
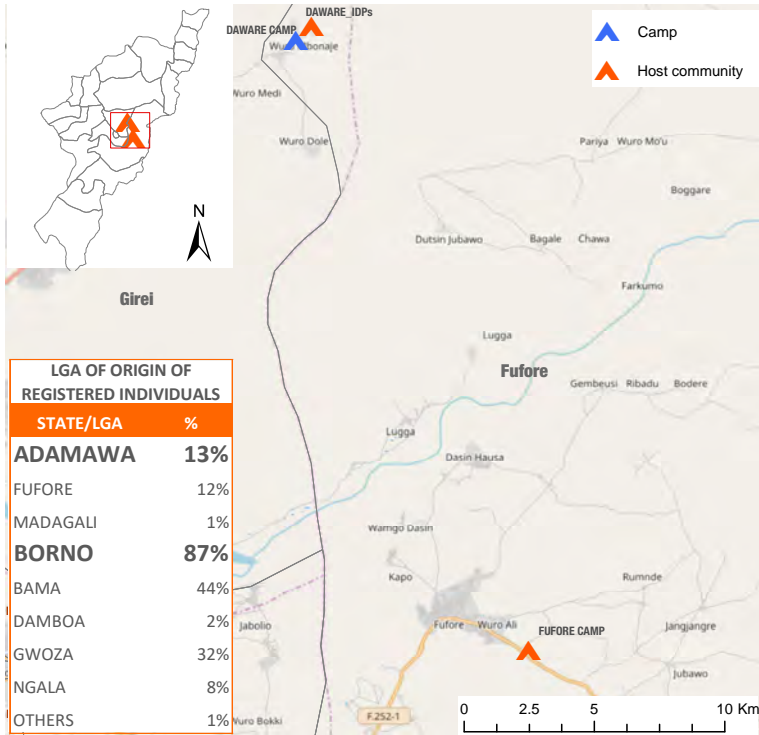


Biometric Registration | 10 November 2018



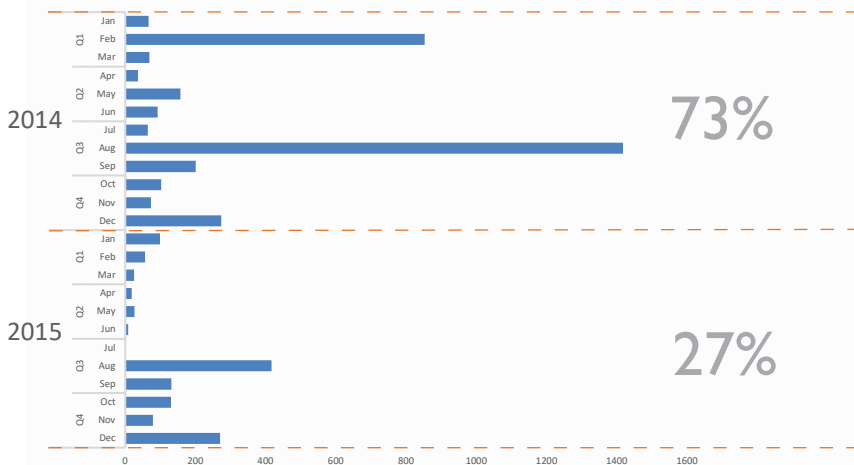
The recently concluded Biometric Registration in Fufore Local Government Area within the period of 24 September – 10 November 2018, has brought the total number of Displaced persons in Baga to 4,686 individuals (1,168 households). The average family size within the location is 4, with 38 per cent of families comprising of 1-2 members; 27 per cent comprising of 3-4 members; 23 per cent comprising of 5-6 members; 9 per cent comprising of 7-8 members; and 9 per cent comprising of 9 and above members.

During the registration exercise, the enumerators collected vulnerability data to identify individuals who may require additional humanitarian assistance. Out of the total population registered, 14 per cent are people experiencing at least one of the vulnerabilities (shown below). Vulnerability figures are obtained through interviews with heads of households, in the presence of other family members.

87 per cent of the IDPs in Fufore were originally from LGAs in Borno state, of the **87 per cent**: 44% were displaced from wards in Bama LGA, 32% from wards in Gwoza LGA, 8% from wards in Ngala LGA, 2% from wards in Damboa, 1% from other LGAs; **13 per cent** of the IDPs were displaced from Adamawa state, this **13 per cent** comprises of IDPs from wards in Fufore LGA (12%), and wards in Madagali LGA (1%).

Location Details			Total				Male				Female			
Place of registration	Location Type	SSID	HH	Ind	Male	Female	0-4 y	5-17 y	18-59 y	60+ y	0-4 y	5-17 y	18-59 y	60+ y
DAWARE CAMP	CAMP	AD_S006	377	1,852	878	974	186	357	307	28	182	384	380	28
DAWARE_IDPs	HOST COMMUNITY	AD_H167	70	201	80	121	28	25	22	5	20	35	58	8
FUFORE CAMP	CAMP	AD_S019	721	2,633	1,280	1,353	224	537	458	61	185	536	581	51
Grand Total			1,168	4,686	2,238	2,448	438	919	787	94	387	955	1,019	87
				100%	48%	52%	9%	20%	17%	2%	8%	20%	22%	2%

Period of Displacement of Registered Individuals



Vulnerabilities

14 per cent of the population are vulnerable

