



EMERGENCY TRACKING TOOL (ETT)

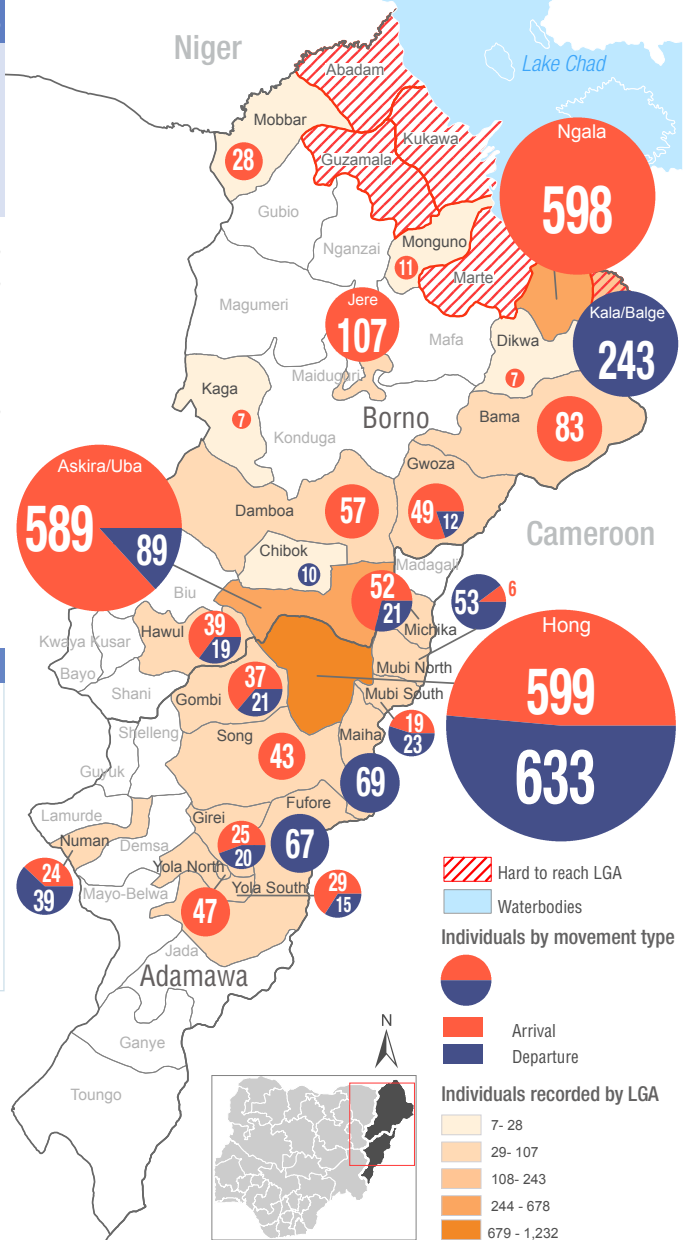
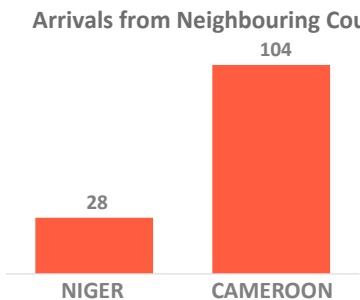
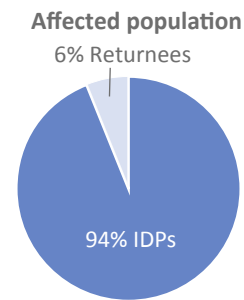
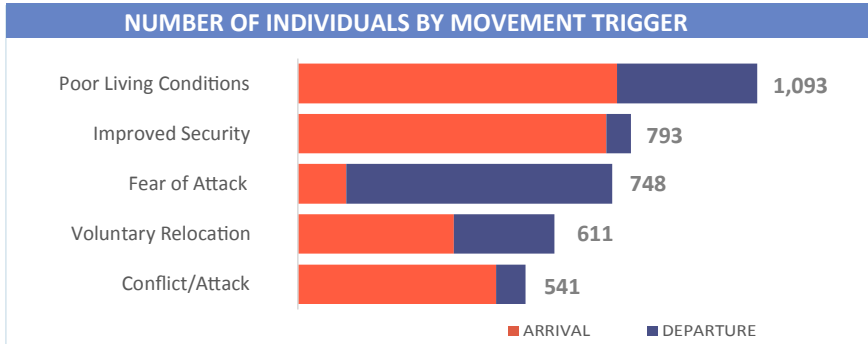
DTM Emergency Tracking Tool (ETT) is deployed to track and provide up-to-date information on sudden displacement and other population movements

ETT Report: No. 147 | 25 November - 1 December 2019

MOVEMENTS	NEW ARRIVAL SCREENING BY NUTRITION PARTNERS
<p>Arrivals: 2,452 individuals</p> <p>Departures: 1,334 individuals</p>	<p>183 Children (6-59 months) screened for malnutrition</p> <p>MUAC category of screened children</p> <p>Green: 153 Yellow: 24 Red: 6</p>

During the period of 25 November – 1 December 2019, a total of 3,786 movements were recorded, which composed of 2,452 arrivals and 1,334 departures. Arrivals were recorded at locations in Askira/Uba, Bama, Damboa, Dikwa, Gwoza, Hawul, Jere, Kaga, Mobbar, Monguno and Ngala Local Government Areas (LGAs) of Borno State. Arrivals were also recorded in Girei, Gombi, Hong, Michika, Mubi North, Mubi South, Numan, Song, Yola North and Yola South LGAs of Adamawa State. Departures were recorded in Askira/Uba, Chibok, Gwoza, Hawul and Kala/Balge LGAs of Borno State. Departures were also recorded in Fufore, Girei, Gombi, Hong, Maiha, Michika, Mubi North, Mubi South, Numan and Yola South LGAs of Adamawa State.

ETT assessments identified the following movement triggers: poor living conditions (29%), improved security (21%), fear of attack (20%), voluntary relocation (16%) and conflict/attack (14%).



* Movements in Kala/Balge were captured by ETT outreach staff in the LGA

SUMMARY OF MAJOR MOVEMENTS

Hong: 599 arrivals and 633 departures were recorded in Hong LGA of Adamawa State. The arrivals include 262 from Garaha ward and 142 from Hildi ward and were tracked at Bangashika ward. Other arrivals include 157 from Gombi South ward of Gombi LGA and 38 from Sorau 'A' ward of Maiha LGA. The 633 departures were from Bangashika ward. The new arrivals reported to have relocated due to improved security while the departures were reportedly due to fear of attack.

Askira/Uba: 589 arrivals and 89 departures were recorded in Askira/Uba LGA of Borno State. The arrivals include 368 from Lassa ward and were tracked in Kopa/Multhafu and Uba ward respectively, 104 from Dille/Huyim ward and 19 from Giwi/Womdeo ward. Other arrivals include 3 from Hong LGA of Adamawa State, 87 from Jakusko LGA of Yobe State and 8 from Gassol LGA of Taraba State. The 89 departures were from Lassa ward. 70% of the new arrivals reported to have relocated due to the ongoing conflict/attack, 15% relocated voluntarily, 13% due to improved security while 2% were reportedly due to fear of attack. 78% of the departures reported to have relocated due to the ongoing conflict while 22% were due to poor living conditions.

Ngala: 598 arrivals were recorded in Ngala LGA of Borno State. The arrivals include 530 from Rann "A" ward of Kala/Balge LGA and 68 from Makary of Cameroon. The arrivals were all due to poor living conditions.

Kala/Balge: 243 departures were recorded in Kala/Balge LGA of Borno State. The 243 departures were from Rann "A" ward. The departures were all due to poor living conditions resulting from the flooding of farmlands caused by the overflow of a nearby Cameroonian river, which had a serious impact on farm produce and livelihood.

NEW ARRIVAL MALNUTRITION SCREENING SUMMARY (CHILDREN 6-59 MONTHS)

An exhaustive nutrition screening using monitoring of symptoms of acute malnutrition mid upper arm circumference (MUAC) and Oedema was conducted by Nutrition Sector partners for 183 children of 6-59 months. Of the 183 children screened, the MUAC reading recorded 6 children (1 from inaccessible area and 5 from accessible area) in the Red category, 24 in the Yellow category and 153 measured in the Green category. No case of Oedema was reported in the 5 LGAs that reports were received from.

The results also include 41 children from neighbouring Cameroon and Republic of Niger (12 children moved to Gwoza, 10 to Mobbar and 19 moved to Ngala); out of all the 41 children measured, one was in the red category, 34 were in the green category and the remaining 6 in the yellow category. All children found with acute malnutrition have been admitted for treatment.

LGA	MUAC Categories						Total
	Green ($\geq 12.5\text{cm}$)		Yellow (11.5 cm - 12.5cm)		Red ($< 11.5\text{cm}$)		
	Inaccessible	Accessible	Inaccessible	Accessible	Inaccessible	Accessible	
Bama	0	17	0	1	1	2	21
Dikwa	1	0	1	0	0	0	2
Gwoza	0	11	0	3	0	0	14
Mobbar	0	8	0	2	0	0	10
Ngala	0	110	0	17	0	1	136
Total	1	152	1	23	1	5	183

■ Nourished

■ Moderate Acute Malnutrition (MAM)

■ Severe Acute Malnutrition (SAM)

Please note, the data presented are not surveillance results and should be interpreted with caution.

Table 1. Details of movements by locations of assessment and locations of arrival / departure - only movements with at least 16 persons are listed below

Tracking Location			Movement Location					
STATE	LGA	WARD	STATE2	LGA2	WARD2	ARRIVAL	DEPARTURE	Grand Total
ADAMAWA	FUFORE	BETI	ADAMAWA	YOLA SOUTH	ADAWURO	-	20	20
		FUFORE		GOMBI	GOMBI NORTH	-	26	26
	GIREI	MODIRRE VINIKLANG	ADAMAWA	FUFORE	PARIYA	-	20	20
	GOMBI	GOMBI SOUTH	ADAMAWA	NUMAN	BARE	-	21	21
	HONG	BANGSHIKA	ADAMAWA	GOMBI	GOMBI SOUTH	157	-	157
				HONG	GARAHA	262	-	262
				HONG	HILDI	142	-	142
				MAIHA	KONKOL	-	545	545
				MAIHA	SORAU A	38	-	38
	MAIHA	MANJEKIN	ADAMAWA	SONG	ZUMO	-	21	21
		SORAU A	ADAMAWA	HONG	BANGSHIKA	-	38	38
	MICHKA	MICHKA I	ADAMAWA	HONG	BANGSHIKA	24	-	24
	MUBI SOUTH	GUDE	BORNO	GWOZA	GWOZA WAKANE	19	-	19
	NUMAN	GAMADIO	ADAMAWA	LAMURDE	WADUKU	18	-	18
		SABON PEGI	ADAMAWA	DEMSA	BORRONG	-	17	17
YOLA NORTH	JAM BUTU	ADAMAWA	YOLA SOUTH	NAMTARI	30	-	30	
YOLA SOUTH	ADARAWO	ADAMAWA	FUFORE	SHIGARI	18	-	18	
BORNO	ASKIRA/UBA	CHUL / RUMIRGO	BORNO	ASKIRA UBA	GIWI/WOMDEO	19	-	19
		DILLE/HUYIM	YOBE	JAKUSKO	JAKUSKO	87	-	87
		KOPA/MULTHAFU	BORNO	ASKIRA UBA	LASSA	57	-	57
		LASSA	ADAMAWA	MICHKA	BAZA MARGHI	-	69	69
		LASSA	BORNO	ASKIRA UBA	DILLE/HUYIM	104	-	104
		UBA	BORNO	BIU	KENKEN	-	20	20
	BAMA	BUDUWA / BULA CHIRABE	BORNO	MAIDUGURI	BOLORI I	23	-	23
		SHEHURI / HAUSARI / MAIRI	BORNO	BAMA	GULUMBA	19	-	19
	DAMBOA	DAMBOA	BORNO	DAMBOA	NZUDA WUYARAM	46	-	46
	GWOZA	PULKA BOKKO	CAMEROON	MAYO-SAVA	MORA	36	-	36
	HAWUL	GWANZANG PUSDA	BORNO	DAMBOA	AJIGN (A)	-	19	19
		KWAJAJFA/HANG	BORNO	DAMBOA	AZUR/MULTE/FORFOR	20	-	20
	JERE	OLD MAIDUGURI	BORNO	KONDUGA	AUNO CHABBOL	107	-	107
	KALA BALGE	RANN "A"	BORNO	NGALA	NGALA	-	243	243
	MOBBAR	DAMASAK	NIGER	DIFFA	CHETIMARI	16	-	16
	NGALA	NGALA	BORNO	KALA BALGE	RANN "A"	530	-	530
			CAMEROON	LOGONE-ET-CHARI	MAKARY	68	-	68

The depiction and use of boundaries, geographic names, and related data shown on maps and included in this report are not warranted to be error free nor do they imply judgment on the legal status of any territory, or any endorsement or acceptance of such boundaries by IOM. MUAC data is provided by UNICEF

For more information or to report an alert, please contact:

Henry Kwenin, DTM Project Coordinator: hkwenin@iom.int | +234 903 8852 524

Dave Bercasio, Emergency Coordinator: dbercasio@iom.int | +234 907 5070 001

DTM information products: <http://nigeria.iom.int/dtm>