

#### SITUATIONAL OVERVIEW



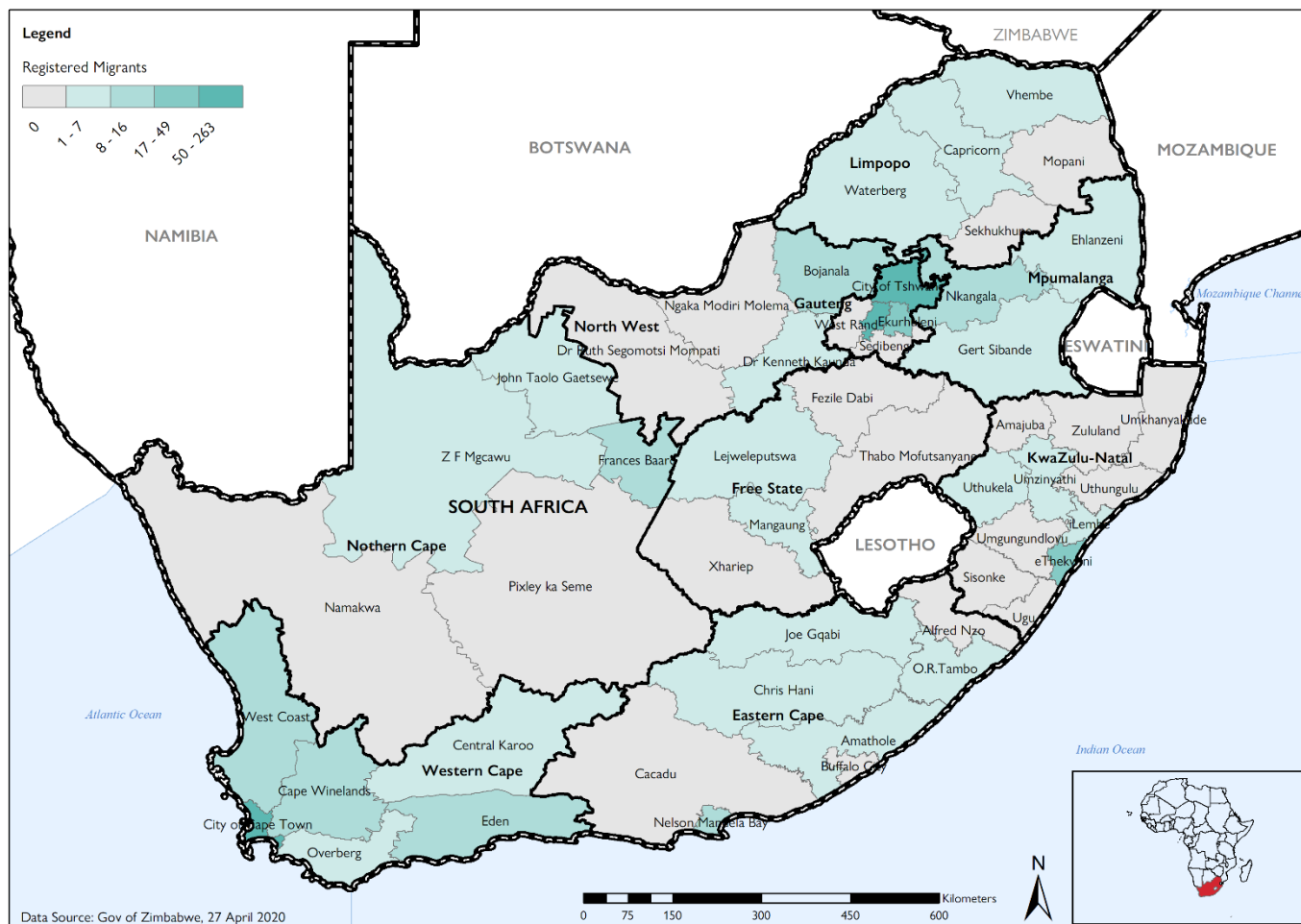
At least **2,682** Zimbabweans in South Africa need transport assistance to return to Zimbabwe.



At least **4,172** Zimbabweans in South Africa need humanitarian assistance.

As of 5 May 2020, South Africa has reported 7,220 confirmed cases across all the nine provinces of the country, with 138 deaths. The Government of South Africa had since declared a State of National Disaster and on 26 March 2020, a nationwide lockdown was declared with further extension by two weeks until 30 April 2020 in order to contain the spread of the virus. Although, the South African government has announced some assistance to ameliorate the socio-economic impacts of the COVID-19 response, thousands of Zimbabwean migrants, particularly those in irregular and vulnerable situations, are finding it difficult to have access to this assistance. At the initiatives of some Zimbabwean Diaspora in South Africa, in collaboration with the Embassy of Zimbabwe and the International Organization for Migration, a COVID-19 Humanitarian Appeal was launched to respond to the most urgent needs of stranded and vulnerable Zimbabwean migrants in South Africa. So far, at least 6,854 stranded migrants are extremely vulnerable and in need emergency humanitarian assistance.

#### LOCATIONS OF STRANDED ZIMBABWEAN MIGRANTS IN SOUTH AFRICA INTENDING TO RETURN



*This map is for illustration purposes only. The boundaries and names shown and the designations used on this map do not imply official endorsement or acceptance by the International Organization for Migration.*

## GEO-DISTRIBUTION OF STRANDED MIGRANTS IN SOUTH AFRICA INTENDING TO RETURN TO ZIMBABWE

Data Source: Gov. of Zimbabwe, 27 April 2020

Provinces	Totals	Districts	
Eastern Cape	22	Amathole	1
		Chris Hanu	5
		Joe Gqabi	2
		Nelson Mandela Bay	12
		O.R.Tambo	2
Free State	8	Lejweleputswa	3
		Mangaung	5
Gauteng	371	City of Johannesburg	193
		City of Tshwane	145
		Ekurhuleni	33
KwaZulu-Natal	57	eThekwinu	49
		iLembe	3
		Umzinyathi	4
		Uthukela	1
Limpopo	10	Capricorn	2
		Vhembe	1
		Waterberg	7
Mpumalanga	20	Ehlanzeni	5
		Gert Sibande	2
		Nkangala	13
North West	10	Bojanala	8
		Dr Kenneth Kaunda	2
Northern Cape	20	Frances Baard	13
		John Taolo Gaetsewe	3
		Z F Mgcawu	4
Western Cape	317	Cape Winelands	16
		Central Karoo	7
		City of Cape Town	263
		Eden	15
		Overberg	5
		West Coast	11



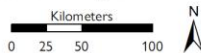
Expected returnees

- 1 - 11
- 12 - 25
- 26 - 64
- 65 - 173

### COVID-19 HUMANITARIAN CRISIS

#### Intended Destinations by Zimbabwean Migrants in South Africa

1:4,885,998 1 cm = 49 km

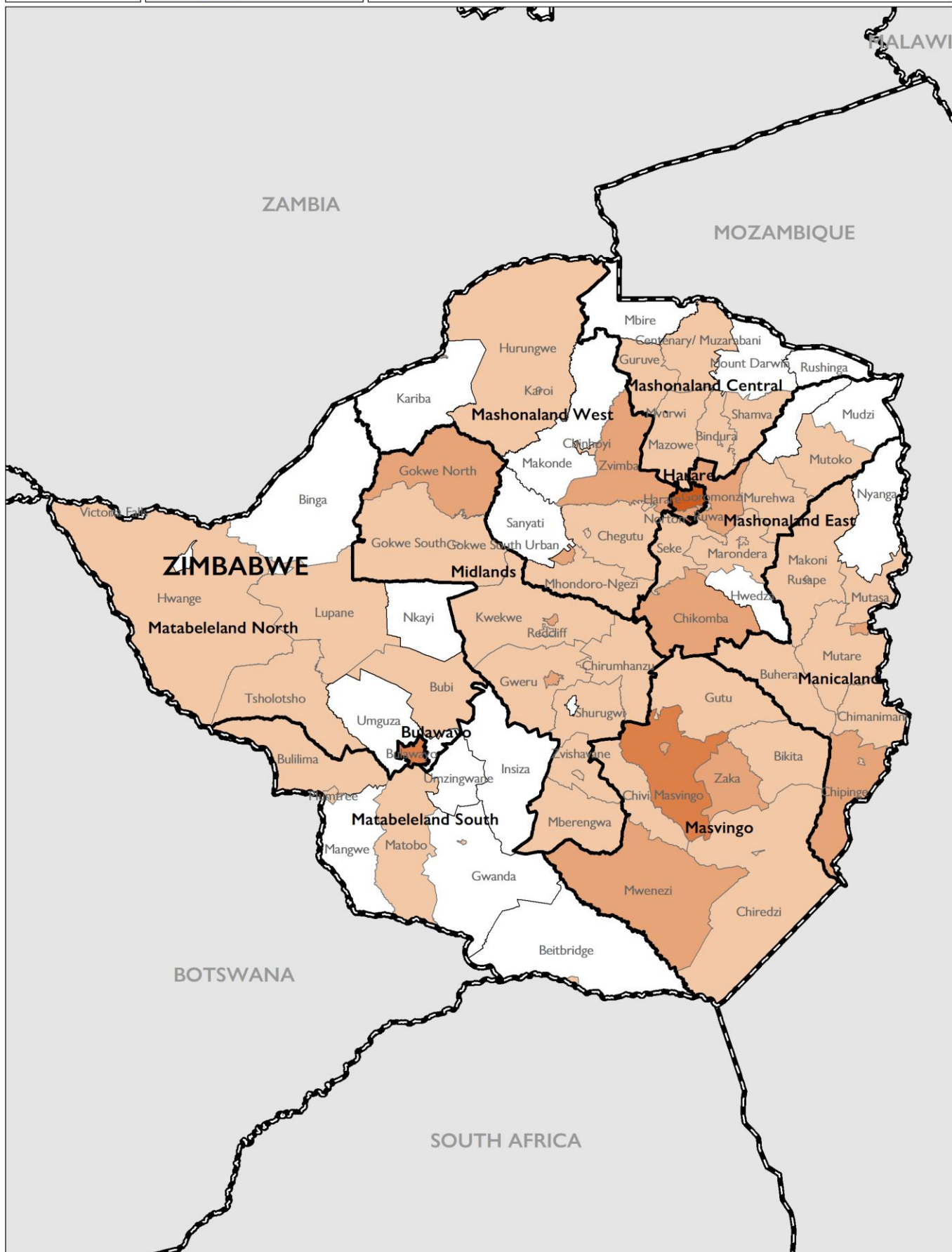


Map Production Date : 5 May 2020

<http://zimbabwe.iom.int> | [dtmzimbabwe@iom.int](mailto:dtmzimbabwe@iom.int)

Data Source : Gov of Zimbabwe, 27 April 2020

Disclaimer : This map is for illustration purposes only. Names and boundaries on this map do not imply official endorsement or acceptance by IOM.



## BREAKDOWN OF INTENDED DESTINATIONS BY MIGRANTS IN SOUTH AFRICA

Data Source: Gov. of Zimbabwe, 27 April 2020

Zimbabwe Provinces	Provincial Totals	Zimbabwe Districts	
Bulawayo	55	Bulawayo	55
Harare	274	Chitungwiza	64
		Epworth	17
		Harare	173
		Harare rural	20
Manicaland	56	Buhera	7
		Chimanimani	4
		Chipinge	15
		Chipinge Urban	1
		Makoni	2
		Mutare	4
		Mutare urban	15
		Mutasa	2
		Rusape	6
Mashonaland Central	19	Bindura	2
		Bindura urban	3
		Centenary/ Muzarabani	4
		Guruve	4
		Mazowe	5
		Shamva	1
Mashonaland East	55	Chikomba	12
		Goromonzi	17
		Marondera	3
		Marondera urban	1
		Murehwa	5
		Mutoko	1
		Ruwa	11
		Seke	5
Mashonaland West	69	Chegutu	6
		Chegutu urban	6
		Chinhoyi	3
		Hurungwe	4
		Kadoma urban	13
		Kariba urban	1
		Karoi	7
		Mhondoro-Ngezi	3
		Norton	11
		Zvimba	15
Masvingo	119	Bikita	1
		Chiredzi	11
		Chiredzi Urban	1
		Chivi	7
		Gutu	2
		Masvingo	40
		Masvingo urban	18
		Mwenezi	15
Zaka	24		
Matabeleland North	18	Bubi	6
		Hwange	3
		Lupane	2
		Tsholotsho	2
		Victoria Falls	5
Matabeleland South	26	Beitbridge urban	6
		Bulilima	7
		Gwanda Urban	9
		Matobo	2
		Plumtree	2
Midlands	104	Chirumhanzu	1
		Gokwe North	18
		Gokwe South	4
		Gokwe South Urban	6
		Gweru	1
		Gweru urban	25
		Kwekwe	4
		Kwekwe urban	13
		Mberengwa	9
		Redcliff	1
		Shurugwi	9
		Zvishavane	7
		Zvishavane Urban	6

### FOR MORE INFORMATION:

Contact: [dtmzimbabwe@iom.int](mailto:dtmzimbabwe@iom.int),

[dtmsupport@iom.int](mailto:dtmsupport@iom.int)

<https://displacement.iom.int/zimbabwe>

### DTM ACTIVITIES SUPPORTED BY:



Ambasáid na hÉireann  
Embassy of Ireland



Zimbabwe  
Idai Recovery  
Project



USAID  
FROM THE AMERICAN PEOPLE

**YOU  
CAN  
HELP  
DONATE  
NOW**