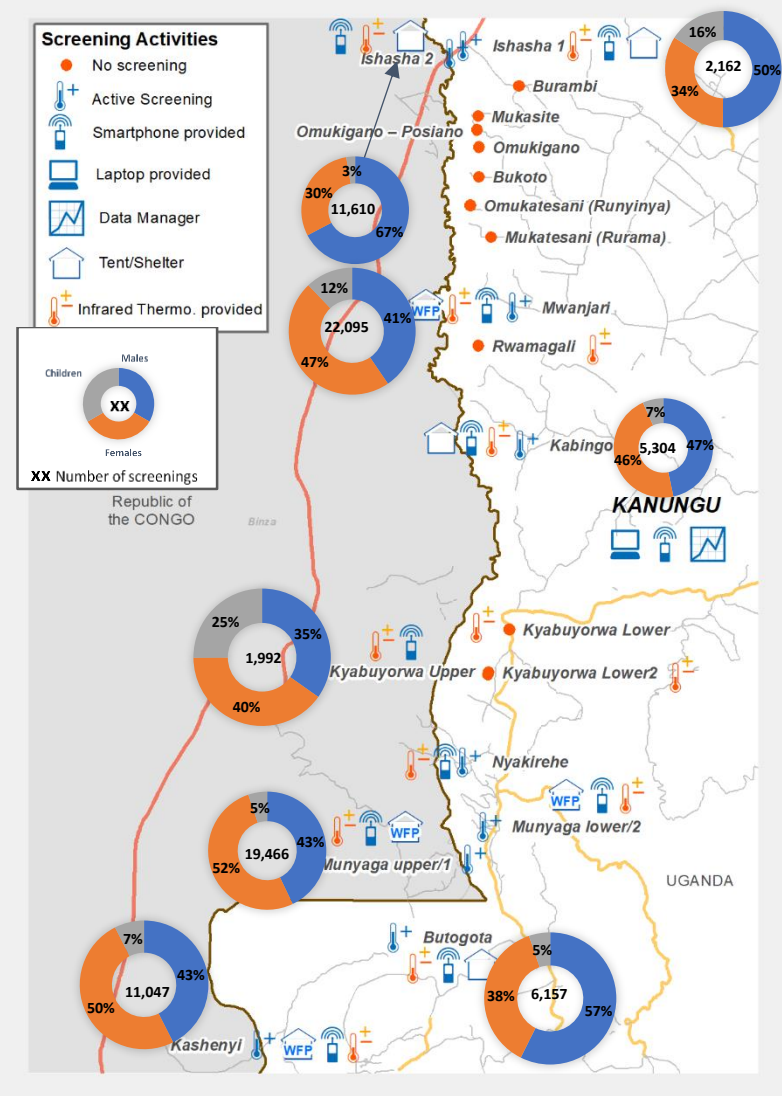
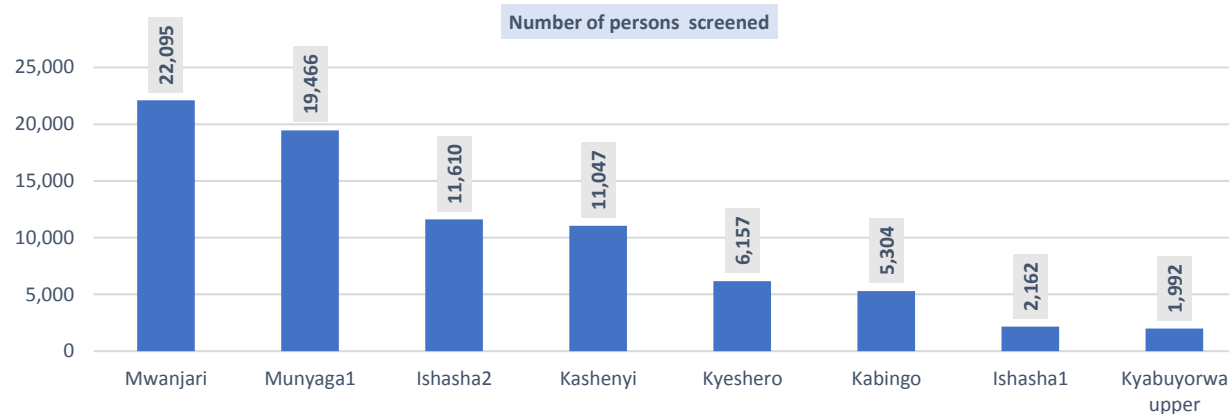
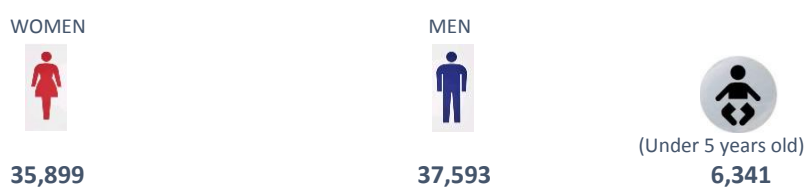


Screenings	Persons isolated	Persons referred
79,833	0	0
Cumulative from 8 th April 2019		
538,950	334	7



Total number of screenings, disaggregated by gender and age



Overview

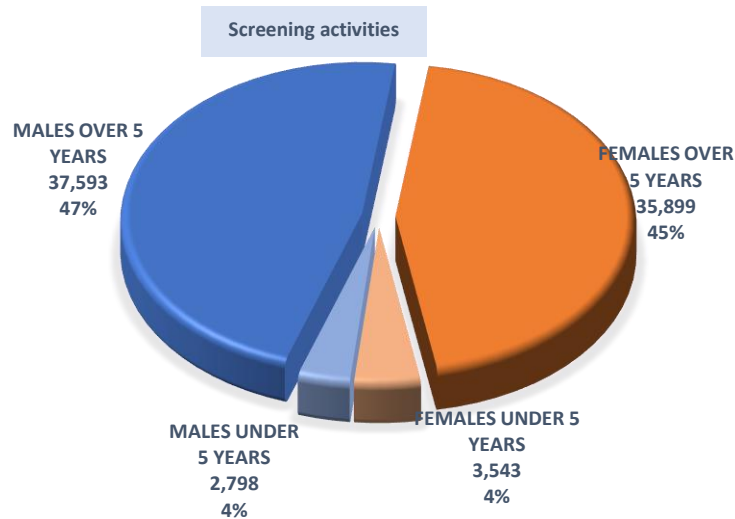
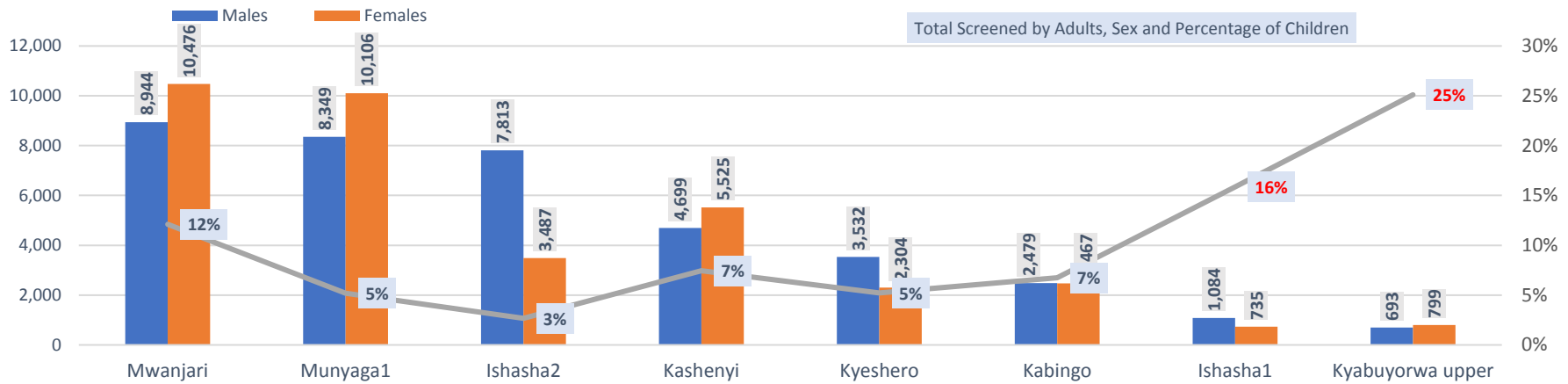
Screening operation

- Eight (8) of the referenced Points of Entry (PoEs) had active screening activities during the reporting period. Two (2) of them are official PoEs (Ishasha2 and Kyeshero/Butogota).
- A total of 79,833 people were screened through eight (8) PoEs during the reporting period.
- The seven 7 PoEs had screening activities from the beginning of the month and the eighth (Kyabuyorwa Upper) resumed active screening activities during the reported period on 8th October.
- Mwanjari registered the highest number of persons screened (22,095) followed by Munyaga1 (19,466).

Demographic

- Ratio of adult males and adult females was 47:45. More adult males than adult females crossed at Ishasha2 (63%) mainly due to cross-border trading activities at Ishasha2 official PoE.
- 8% were children under 5 years old. The children under 5 years old were mostly in the company of female parents or relatives that were crossing to Kanungu to trade.

DETAILS PER POE



Kyabuyorwa Upper and Ishasha1 have a higher percentage of children under 5 years old, 25% and 16% respectively, which are explained by the number of women, mainly asylum seekers, who move with their toddlers and enter Uganda through these informal PoEs.

The type of flows is influenced by the land configuration (mountainous, forest...) and the type of PoE (formal or informal). The type of access road (main road or rural road) influences the type of flow as well as the reason for travelling. The presence of markets and agricultural activities is a pull factor and may attract more adult women than men.

