







The objective of the Emergency Tracking Tool (ETT) - Movement Alert is to collect information on large and sudden population movements, and to provide support to the Government and the humanitarian community by disseminating data on IDPs for informing effective humanitarian response to the affected population. Information is collected through key informant interviews or direct observation. The dashboard provides basic information on displacements recorded in Montepuez district from 23rd to 25th July. This ETT Movement Alert forms part of a larger exercise in mapping displacement trends on a weekly basis. Reported findings complement information obtained through other DTM data collection activities in the country. Additional information is available upon request.

## MOVEMENT ALERT

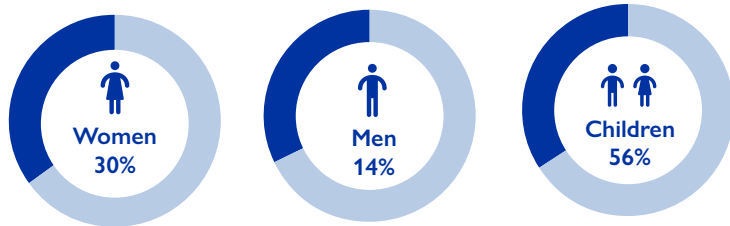
### SUMMARY OF THE EVENT

Following the recent attacks in Palma district, the DTM team in Montepuez reported an estimated 564 individuals arriving between 23rd and 25th July. Displaced families are mainly coming from Palma (Mute) and from Muidumbe (Muidumbe sede).

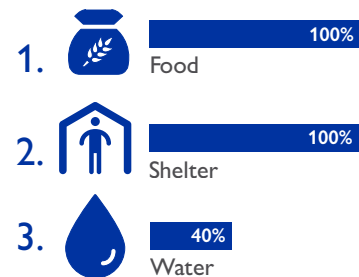
### KEY INFORMATION

-  • ASSESSMENT LOCATION: Montepuez
-  • DATE OF MOVEMENT: 23rd to 25th July
-  • LOCATION TYPE: Host community
-  • REASON FOR MOVEMENT: Palma and Muidumbe attacks
-  • MEANS OF TRAVEL: Bus/Foot
-  • AVAILABLE ASSISTANCE: None

### DEMOGRAPHICS



### MAIN REPORTED NEEDS



### VULNERABILITIES

