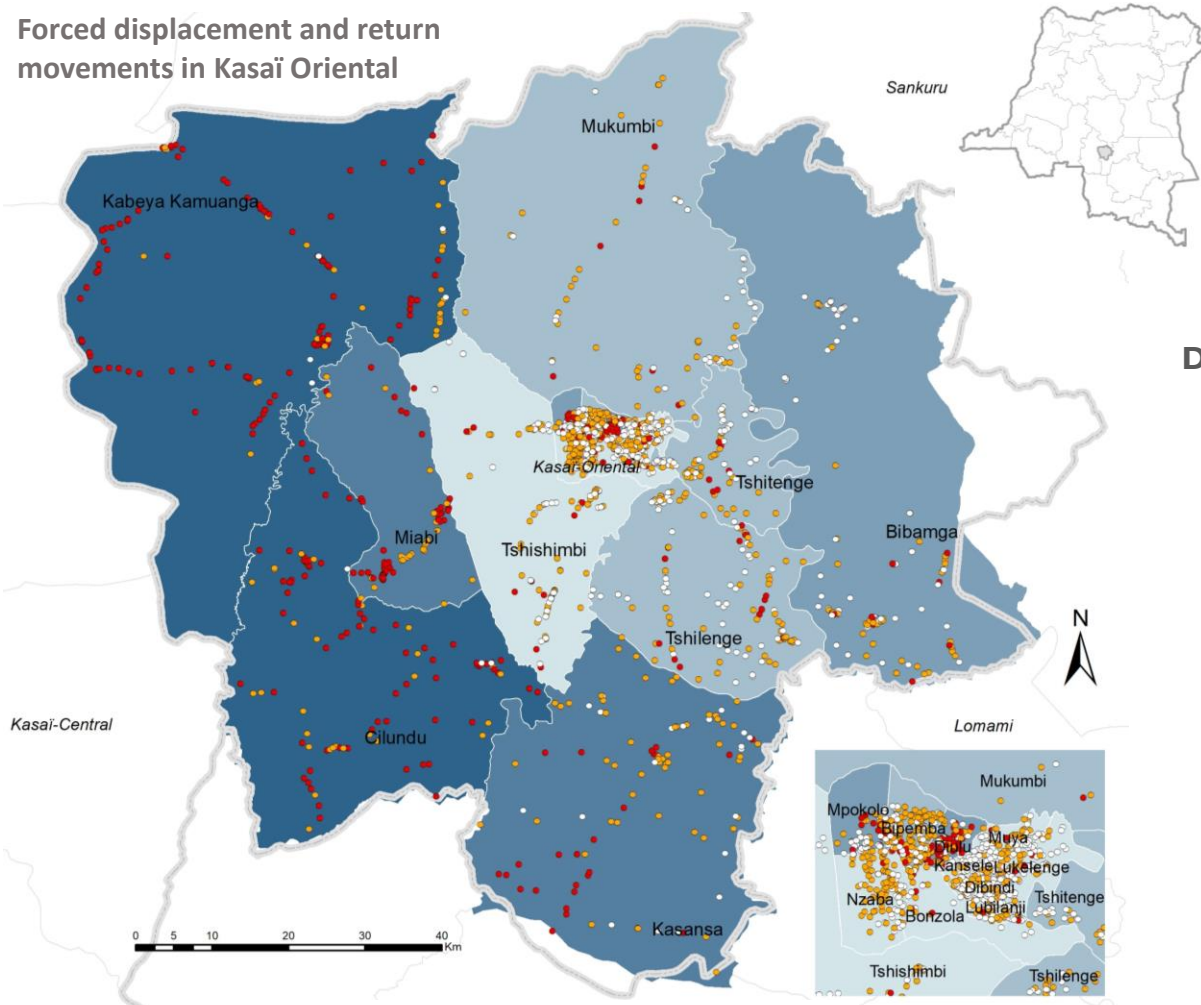
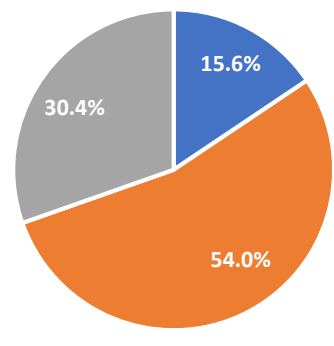


Forced displacement and return movements in Kasai Oriental

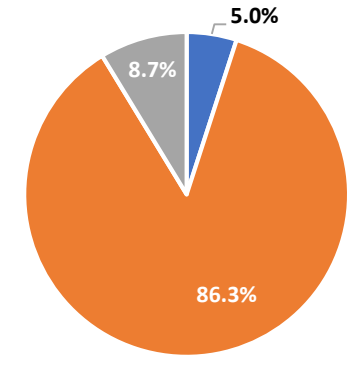


This dashboard provides the main findings of the mobility tracking assessments that were conducted in the province of Kasai Oriental. These assessments were conducted in all the accessible villages during two periods: from 16 to 31 July 2018 and from 13 to 21 November 2018 in 309 health areas, which corresponds to 19 health zones. For these assessments, a total of 1,956 villages were evaluated through 5,445 key informant interviews by IOM's partner Gouvernance +. The presence of around 463 returnees from Angola was reported in the 1,234 villages where their presence had been evaluated.

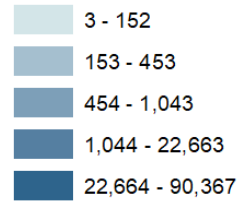
Displacement period



Return period



Number of Returnees per health zone



Presence of IDPs, returnees (internal) and individuals returning from Angola, in villages assessed

- IDPs or Returnees
- No IDPs, no returnees (internal), no returnees from Angola
- IDPs, Returnees (internal), Returnees from Angola

The maps contained in this report are for illustration purposes only. The depiction and use of boundaries, geographic names, and related data shown on maps and included in this report are not warranted to be free of error nor do they imply judgment on the legal status of any territory, or any endorsement or acceptance of such boundaries by IOM. Sources: basemap RGC (Référentiel Géographique commun de la RDC), DTM assessment DRC / G+, July / November 2018. Some geographical limits do not coincide with the data collected in the field. GPS coordinates have not been verified in the field.

Year of displacement*	Number of displaced individuals	Number of Returnees (Internal)
2018	34,440	16,116
2017	61,230	159,685
2016	17,684	9,213

Assessed villages

1,956

Key informants

5,445

IDPs*

113,354

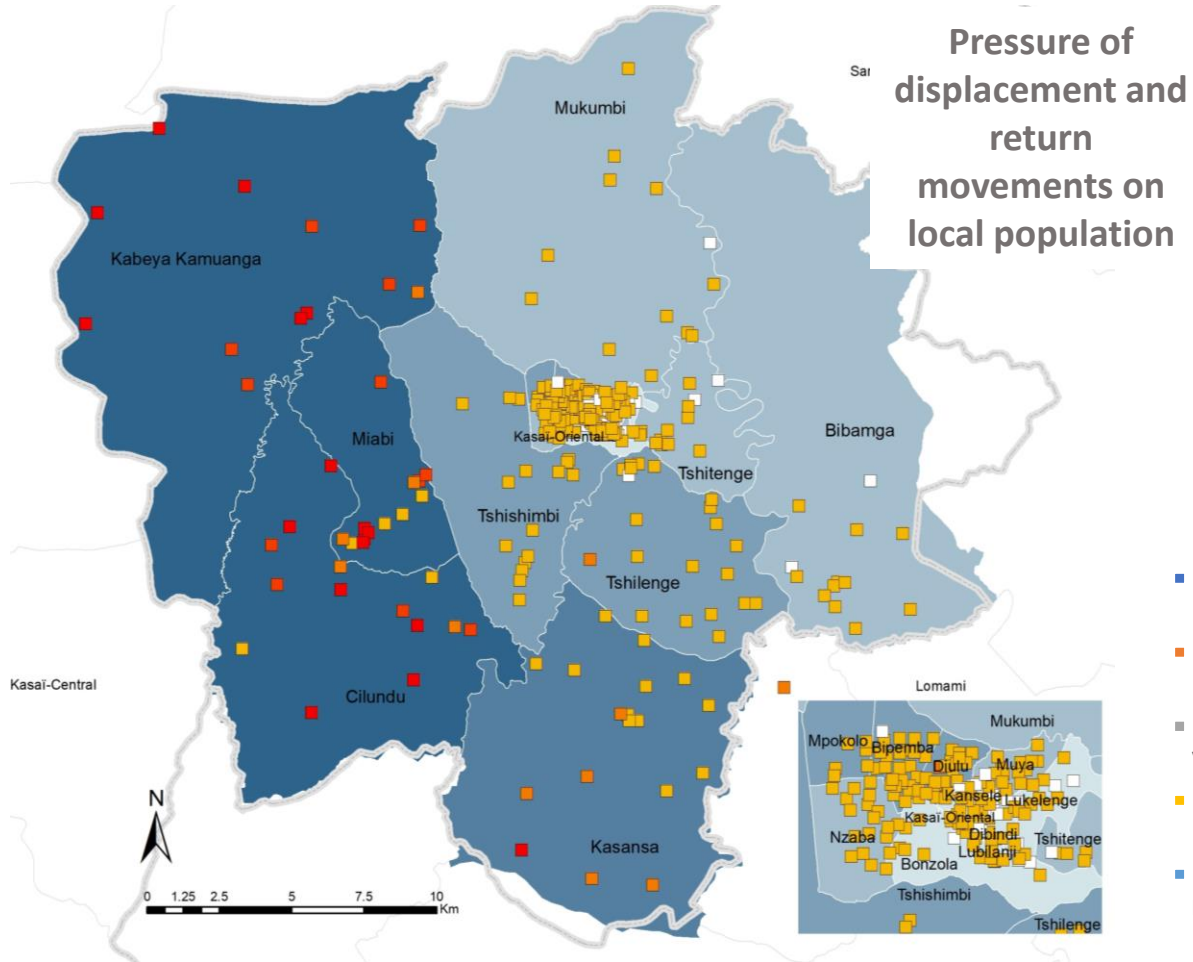
Returnees (Internal)*

185,014

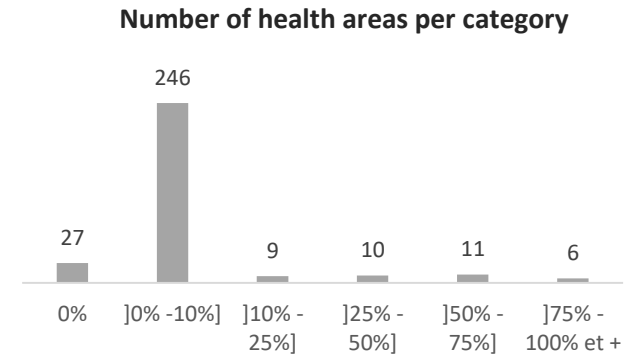
Returnees from Angola*

463

* Estimates

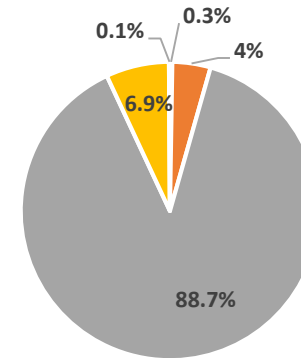


In 246 health areas, IDPs and returnees (internal / from Angola) represent from 0.1 % to 10% of the local population (DPS estimates). In 36 health areas, displaced and returnee populations represent between 10% and 100% of the local population. This pressure is stronger in Ciaciacia and Dibula health areas (Kabeya Kamwanga).

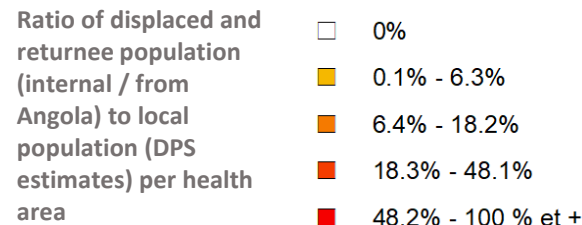
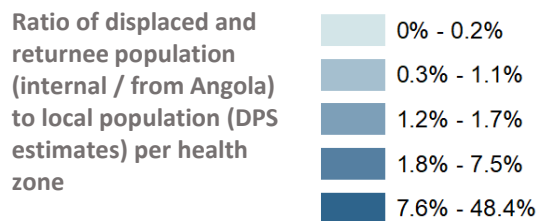
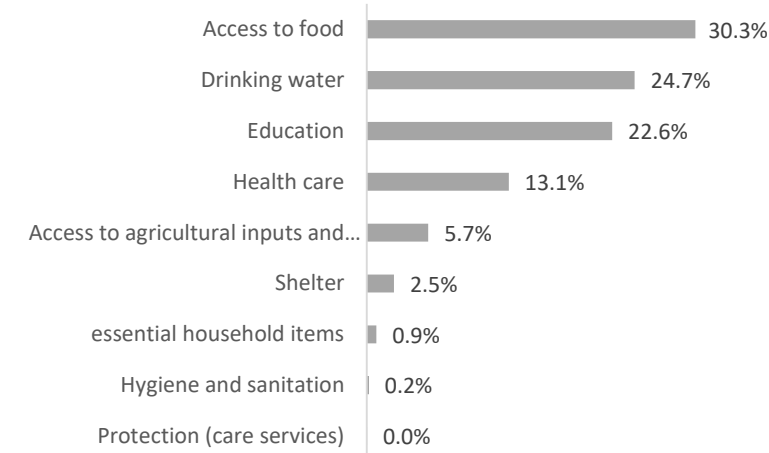


Situation of the villages

- No information
- Destroyed
- Not affected by violence
- Partially destroyed
- Emptied of its population



Priority needs of the Returnees



Sources: basemap RGC (Référentiel Géographique commun de la RDC), DTM assessment DRC / G+, July / November 2018. Some geographical limits do not coincide with the data collected in the field. GPS coordinates have not been verified in the field.

Territory	Health zone	Number of villages assessed	Number of villages (DPS)	Total number of IDPs	Total number of Returnees (internal)	Total number of Returnees from Angola	DTM coverage	% IDP and returnee population (int./ ext.) /total population totale (DPS estim.)	Population (DPS estim. 2017)
KABEYA-KAMWANGA	KABEYA KAMUANGA	159	181	21,476	90,367	86	87.8%	48.4%	231,263
KATANDA	BIBANGA	160	137	2,776	1,043	0	116.8%	1.1%	345,478
	CITENGE	88	87	2,574	380	163	101.1%	1.0%	303,654
LUPATAPATA	MUKUMBI	102	76	2,660	230	0	134.2%	0.9%	329,886
	TSHISHIMBI	89	91	3,994	152	0	97.8%	1.6%	258,733
MBUJI-MAYI	BIPEMBA	133	112	2,953	283	77	118.8%	1.2%	266,209
	BONZOLA	30	29	213	25	4	103.4%	0.0%	488,941
	DIBINDI	110	98	278	50	1	112.2%	0.2%	188,670
	DIULU	95	91	3,167	841	0	104.4%	1.7%	233,870
	KANSELE	52	72	234	3	0	72.2%	0.1%	227,658
	LUBILANJI	63	58	420	11	0	108.6%	0.2%	261,699
	LUKELENGE	103	93	471	70	0	110.8%	0.2%	303,071
	MPOKOLO	126	101	2,271	837	0	124.8%	1.2%	260,974
MIABI	MUYA	95	100	1,440	11	82	95.0%	0.7%	210,692
	NZABA	122	97	1,922	21	50	125.8%	0.8%	244,785
	CILUNDU	118	128	35,362	54,955	0	92.2%	30.2%	299,030
	MIABI	87	61	18,944	22,663	0	142.6%	37.7%	110,333
TSHILENGE	KASANSA	99	89	8,625	12,619	0	111.2%	7.5%	283,549
	TSHILENGE	125	125	3,574	453	0	100.0%	1.2%	322,783
Total		1,956	1,826	113,354	185,014	463	21	100%	5,171,278

Forced displacement and return movement in Kasai Oriental, in November 2018: summary per territory and health zone

3