

EMERGENCY EVENT TRACKING

Data collection: 5 February - 7 February 2021

CONFLICT



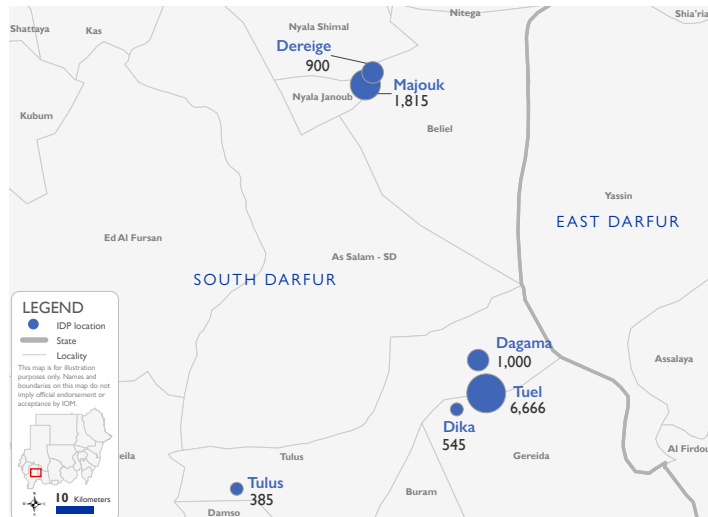
The DTM Emergency Event Tracking (EET) is deployed to track sudden displacement and population movements, provide more frequent updates on the scale of displacement and quantify the affected population when needed. As a subcomponent of the new Mobility Tracking methodology in Sudan (Round One), and activated on a need basis, EET utilises a broad network of key informants to capture best estimates of the affected population presence per location – a useful tool for humanitarian response planning and design.

Event Overview



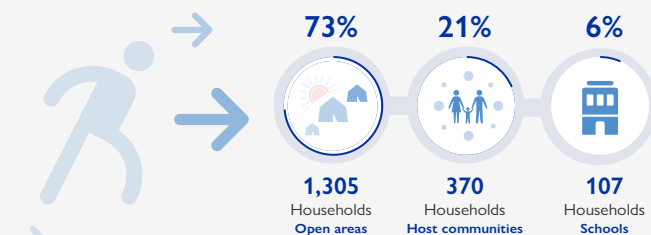
DTM teams activated EET to monitor the displacement of individuals affected by inter-communal conflict between Falata and Arab tribes in Gereida locality, South Darfur. Tensions erupted in and around Tuel village on 18 January 2021, following a violent assault that occurred the day prior. For more information, please see [EET Gereida, South Darfur_002](#).

The third update estimates a total number of 11,311 individuals (1,782 households) displaced across Tuel, Tulus, Dika and Dagama villages, as well as Dereige and Majouk in Nyala town. Since the second update, a new caseload of 1,815 individuals (267 households) arrived in the Majouk area of Nyala town on 5 February, having been displaced from Tuel village for almost three weeks. At present, the new caseload is gathering in open areas of Nyala town. All new arrivals are Sudanese nationals and at least 24 of these individuals (264 in total) have additional vulnerabilities in need of assistance and support. As reported in the previous update, 61 individuals (of the total caseload) were killed and 56 sustained injuries, whilst at least 1,468 internally displaced persons (IDPs) have lost personal belongings and livestock. Based on a ranking scale, the three main priority needs in Nyala town (and across the total caseload) remain non-food items, food and emergency shelter.



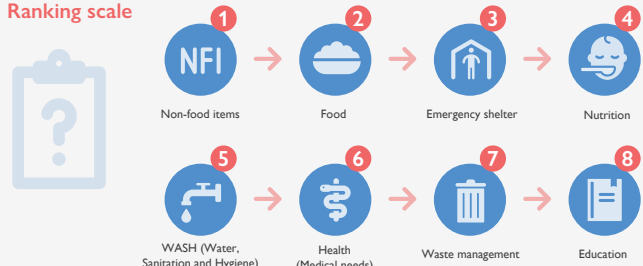
Shelter Indicator

Approximately 1,305 households (73%) are gathering in open areas of Nyala town, Tuel and Dereige villages, 370 households (21%) are staying with host communities in Tulus, Dika and Dagama, and 107 IDP households (6%) are sheltering in schools located in Tuel village.

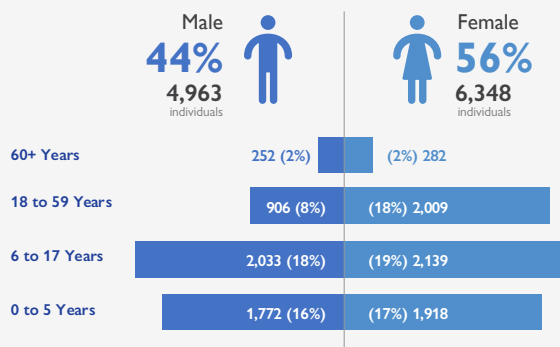


Priority needs

Ranking scale



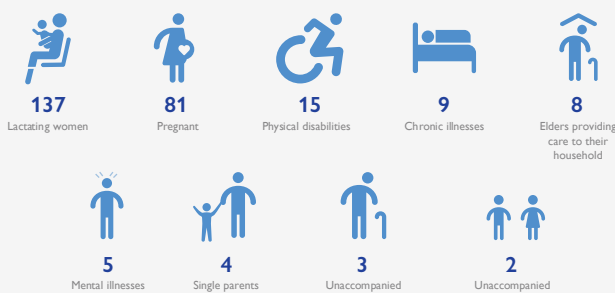
Demographics



Return Intention

Data collected through the return intention indicator suggests that the majority of IDPs in Nyala town, Dereige and Tulus villages intend to remain in the same place. Key informants in Nyala indicate that more IDPs are likely to arrive over the coming days due to continual insecurity in Tuel and Abu Lala. Some IDPs located in Tuel village (where the conflict erupted) intend to remain at the same sites of their former homes and others intend to move to another location. IDPs located in Dika and Dagama villages intend to return to their locations of origin upon improvement of the security situation.

Vulnerabilities



IOM DISCLAIMER

The opinions expressed in the report are those of the authors and do not necessarily reflect the views of the International Organization for Migration (IOM). The designations employed and the presentation of material throughout the report do not imply the expression of any opinion whatsoever on the part of IOM concerning the legal status of any country, territory, city or area, or of its authorities, or concerning its frontiers or boundaries.

IOM is committed to the principle that humane and orderly migration benefits migrants and society. As an intergovernmental organization, IOM acts with its partners in the international community to: assist in the meeting of operational challenges of migration; advance understanding of migration issues; encourage social and economic development through migration; and uphold the human dignity and well-being of migrants.