

EMERGENCY EVENT TRACKING: Al Lait, North Darfur

UPDATE 1: 1 September 2020

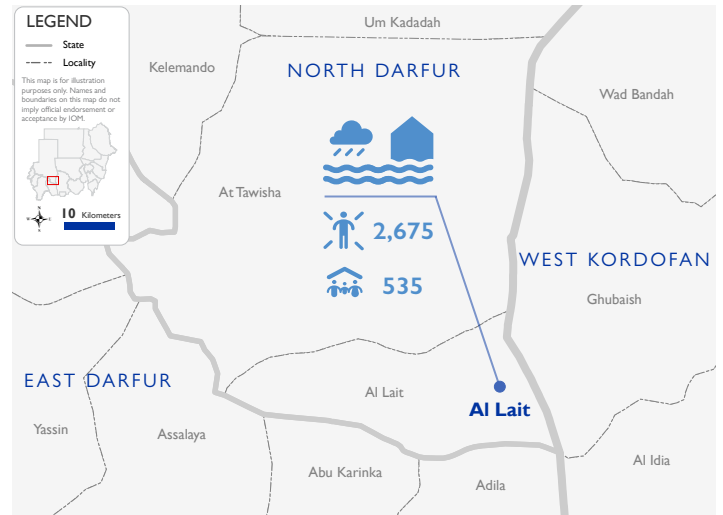
Data collection: 13-19 August 2020

The DTM Emergency Event Tracking (EET) is deployed to track sudden displacement and population movements, provide more frequent updates on the scale of displacement and quantify the affected population when needed. As a subcomponent of the new Mobility Tracking methodology in Sudan ([Round one](#)), and activated on a need basis, EET utilises a broad network of key informants to capture best estimates of the affected population presence per location – a useful tool for humanitarian response planning and design.

Event Overview

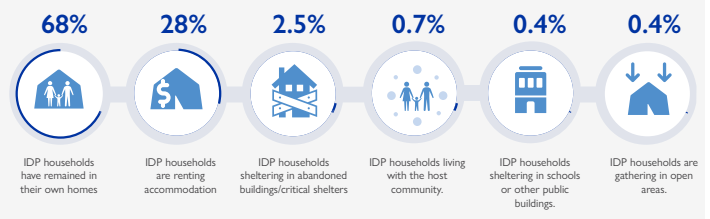


DTM teams activated EET to monitor the situation of individuals affected by heavy rains and flooding in Al Lait locality, North Darfur, on 2 August 2020. The first EET update estimates a total of 2,675 individuals (535 households) affected in Al Lait town. A total of 230 individuals (46 households) were displaced immediately after the flooding, but have now returned to their locations of origin following the distribution of non-food item (NFI) kits by UNHCR. Some of these returnees returned to their former residences, whilst others returned to other shelter types. Approximately 350 latrines and 531 houses were damaged, and four homes were completely destroyed. At least 652 individuals (24%) reported additional vulnerabilities in need of assistance and support. Based on a ranking scale, the three main priority needs identified were WASH (water, sanitation, hygiene), non-food items and healthcare.



Shelter Indicator

The majority of affected households (68%) remain in their own homes, whilst 28 per cent are renting accommodation and the remaining four per cent are sheltering in abandoned buildings or critical shelters, schools and with the host community. UNHCR distributed NFI kits to the 46 displaced households on 18 August 2020, enabling them to return to their locations of origin.



Vulnerabilities



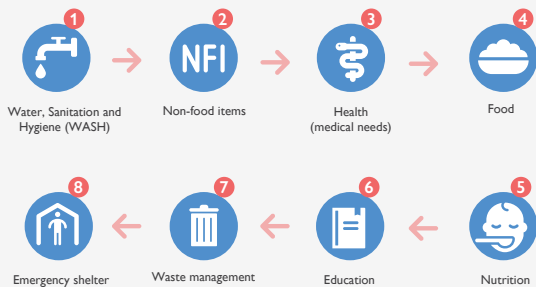
IOM DISCLAIMER

The opinions expressed in the report are those of the authors and do not necessarily reflect the views of the International Organization for Migration (IOM). The designations employed and the presentation of material throughout the report do not imply the expression of any opinion whatsoever on the part of IOM concerning the legal status of any country, territory, city or area, or of its authorities, or concerning its frontiers or boundaries.

IOM is committed to the principle that humane and orderly migration benefits migrants and society. As an intergovernmental organization, IOM acts with its partners in the international community to: assist in the meeting of operational challenges of migration; advance understanding of migration issues; encourage social and economic development through migration; and uphold the human dignity and well-being of migrants.

Priority needs

Ranking scale



Demographics



Age Group	Male	Female
60+ Years	150 (6%)	(6%) 165
18 to 59 Years	330 (13%)	(14%) 370
6 to 17 Years	346 (13%)	(14%) 365
0 to 5 Years	(17%) 452	(17%) 497

Return Intention

Data collected through the return intention indicator suggests that the majority of the IDPs intend to remain in the same location.