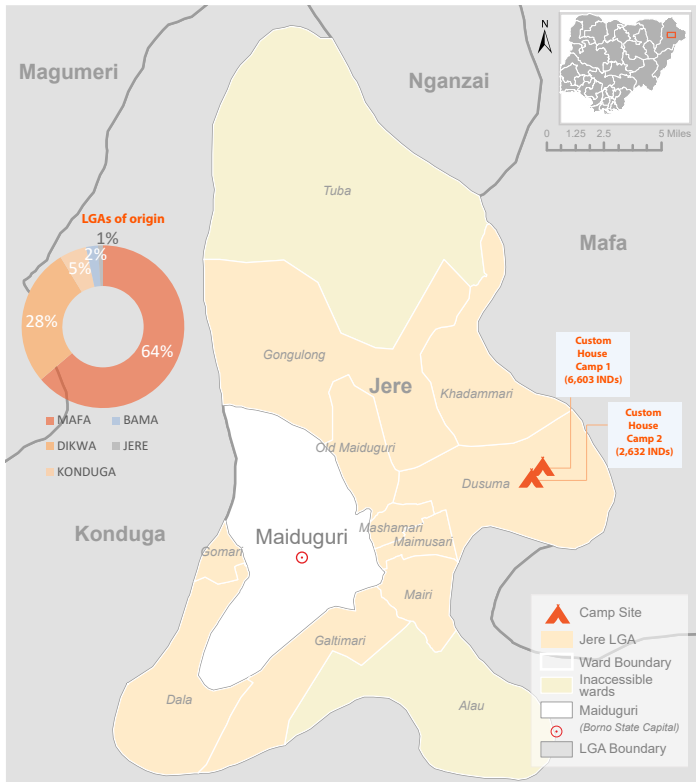




## Biometric Registration Update | 13 January 2018



### Total Registered

**9,235** individuals

**2,142** households

**87%**  
Women and Children

**25%**  
Children under 5 years

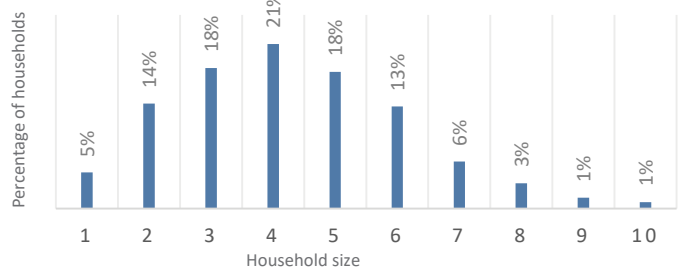
**44%**  
Male

**56%**  
Female

**3%**  
Elderly

**11%**  
People with vulnerabilities

### Household size distribution



Biometric Registration, conducted by IOM Nigeria's DTM Unit at Custom House Camp in Jere, captured 2,124 displaced households (9,235 displaced persons). The overall average family size within the location is 4.3, with 19 per cent of families comprising of 1-2 members; 39 per cent comprising of 3-4 members; 31 per cent comprising of 5-6 members; 9 per cent comprising of 7-8 members; and 2 per cent comprising of 9-10 members.

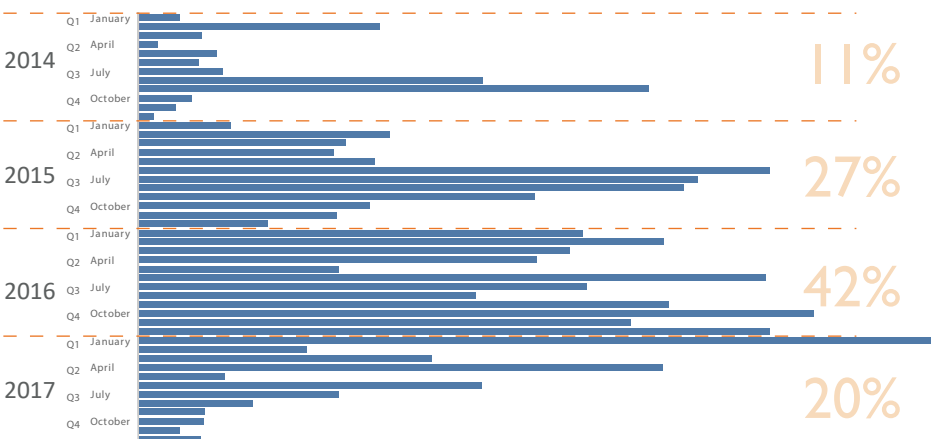
During the registration exercise, the enumerators collected vulnerability data to identify individuals who may require additional humanitarian assistance. Out of the total population registered, 11 per cent are people experiencing at least one of the vulnerabilities (shown below). Vulnerability figures are obtained through interviews with heads of households, in the presence of other family members.

The majority - 64 per cent of the IDPs in the camp - were displaced from neighbouring Mafa Local Government Area (LGA); 28 per cent are originally from Dikwa LGA; 5 per cent are from Konduga LGA; 2 per cent are from Bama LGA; and 1 per cent have been displaced from other wards in Jere LGA.

### Registered population by gender and age

Location details		Total		Male				Female					
Place of registration	SSID	HH	Ind	Male	Female	0-4 y	5-17 y	18-59 y	60+ y	0-4 y	5-17 y	18-59 y	60+ y
CUSTOM HOUSE CAMP 1	BO_S151	1,569	6,603	2,876	3,727	873	1,227	690	86	865	1,325	1,447	90
CUSTOM HOUSE CAMP 2	BO_S196	573	2,632	1,170	1,462	287	522	296	65	295	573	555	39
<b>Total registered</b>		<b>2,142</b>	<b>9,235</b>	<b>4,046</b>	<b>5,189</b>	<b>1,160</b>	<b>1,749</b>	<b>986</b>	<b>151</b>	<b>1,160</b>	<b>1,898</b>	<b>2,002</b>	<b>129</b>
<b>Percentage</b>			<b>100%</b>	<b>44%</b>	<b>56%</b>	<b>12%</b>	<b>19%</b>	<b>11%</b>	<b>2%</b>	<b>13%</b>	<b>20%</b>	<b>22%</b>	<b>1%</b>

### Period of displacement of registered individuals



### Vulnerabilities

11 per cent of the population are vulnerable

