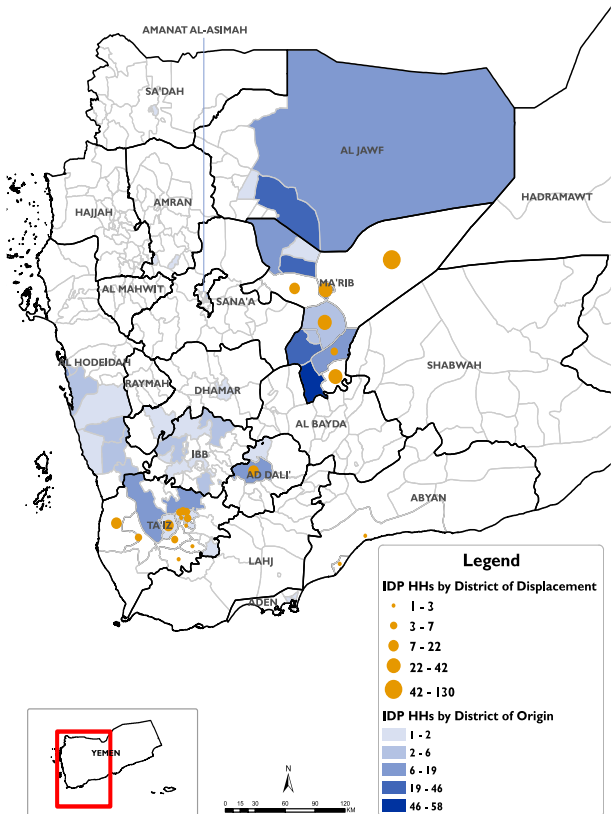


Reporting Period : 18 - 24 Oct 2020

Published on: 25 October 2020

Displaced Households by District of Displacement and Origin	Number of Displaced Households (IDP HHs) per Governorate			
	Governorate of Displacement	IDP HH Displaced during the week	IDP HH who left displaced location within the week	Total IDP HH
		18 to 24 Oct	18 to 24 Oct	01 Jan to 24 Oct
Hajjah	N/A	N/A	N/A	
Al Dhale'e	14	0	2,550	
Al Hudaydah	0	0	3,507	
Taizz	66	1	2,248	
Amanat Al Asimah	N/A	N/A	N/A	
Ibb	N/A	N/A	N/A	
Marib	256	6	11,844	
Amran	N/A	N/A	N/A	
Sana'a	N/A	N/A	N/A	
Shabwah	0	0	687	
Lahj	0	0	858	
Aden	0	2	160	
Sa'ada	N/A	N/A	N/A	
Abyan	4	0	790	
Dhamar	N/A	N/A	N/A	
Hadramaut	0	0	1,122	
Al Bayda	0	0	138	
Al Jawf	0	0	1,561	
Raymah	N/A	N/A	N/A	
Al Mahwit	N/A	N/A	N/A	
Socotra	0	0	0	
Al Maharah	0	0	575	
Total	340	9	26,040	



*Based on data collected during 18 - 24 Oct, 2020

DISPLACEMENT TRACKING

DTM's Rapid Displacement Tracking (RDT) tool collects and reports on numbers of households forced to flee on a daily basis, allowing for regular reporting of new displacements in terms of numbers, geography and needs. In the first eight months of 2020, conflict and natural disasters have resulted in new patterns of displacement, particularly in Marib, Al Hudaydah, Al Dhale'e, Taizz and Al Jawf governorates.

WEEKLY UPDATE

Between 18 and 24 October, newly displaced households were recorded in Marib (256 HH), Taizz (66 HH), and Al Dhale'e (14 HH). Most of these displacements were the result of increased fighting in Marib (182 HH), Al Jawf (48 HH) and Al Hudaydah (35 HH).

IDP HH WHO LEFT DISPLACED LOCATIONS

Since the beginning of 2020, DTM also identified other **1,247** previously displaced households who left the displaced location and moved to either their place of origin or some other displaced location.

Displaced People
26,040 Households
156,240 Individuals

*Reported during Jan 01 - Oct 24, 2020

UPDATE: Additional **66** HHs were displaced between Oct 11 - Oct 17, 2020, and have been added in the total households.

Returned People
1,563 Households
9,378 Individuals

*Reported during Jan 01 - Oct 24, 2020

