

IDP sites assessed — 8 (Kabaya*, Bakada*, Koasa, Gigipuna-VJ Camp, Soi, Sabali Beach, Sovula** and Barema road side**)

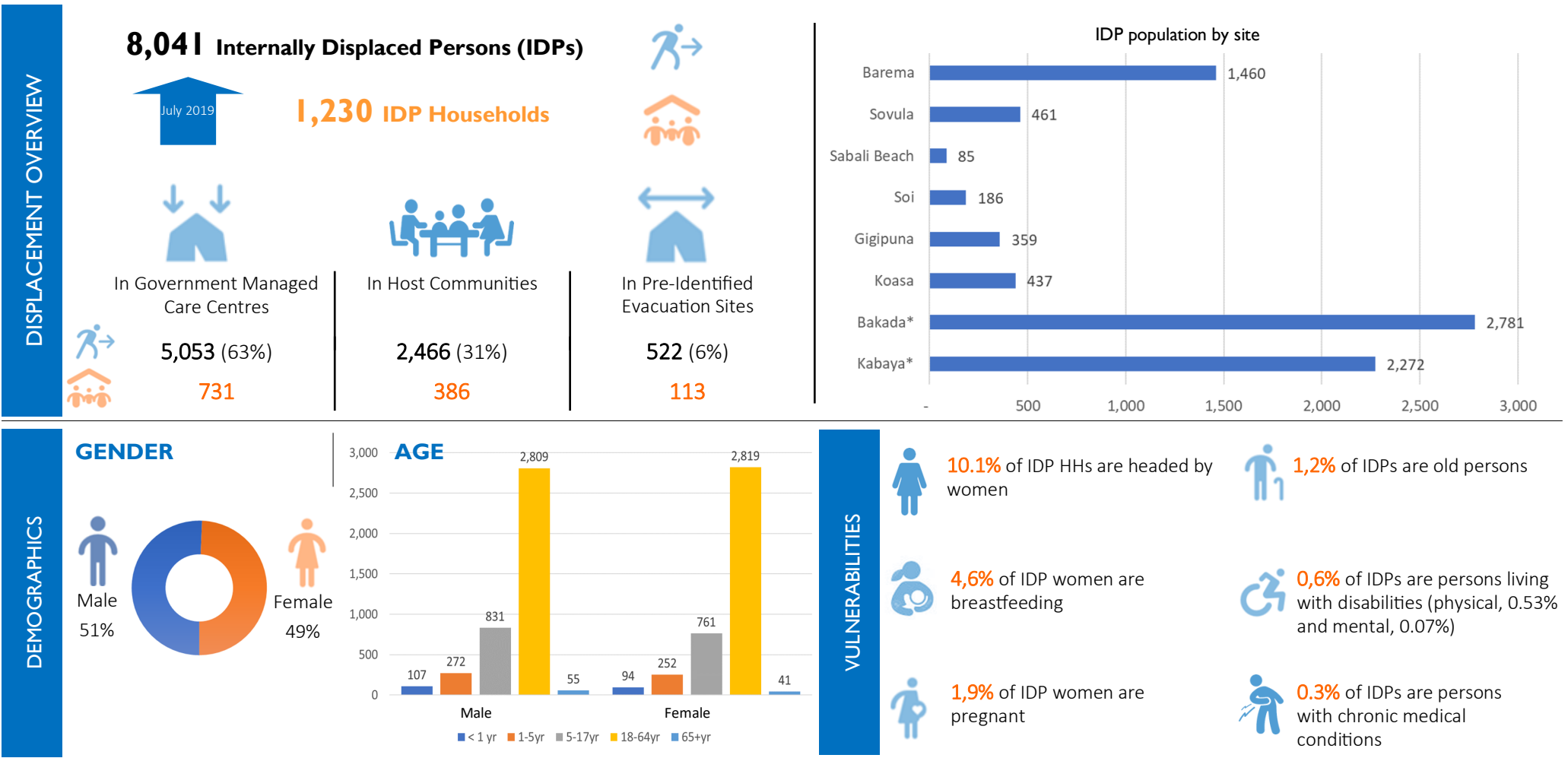
Data collection: 16-19 Jul 2019

Site Duration: **Short Term (All)**

Sites with service providers' contact list: 5

Sites with management committee, agency or authority: 7

Sites reporting registration activity¹: 7



* Care Centre. Bakada and Kabaya were the 2 Government managed Care Centres during the time of the assessment. Overall, 74% of IDP HHs were profiled in Kabaya (69%) and Bakada (79%) through the DTM HH Registration.
 ** Sites identified during the second round of the DTM Assessment. Sovula and Barema road side IDP sites hosted non-employees of Hargy Palm Company previously accommodated at Hargy Palm Company's Plantation soon after the displacement.

¹ PNG Red Cross Society (PNGRCS) conducted HH Registrations in 7 sites. Of these sites, Kabaya and Bakada were covered in the joint DTM HH Registration activity by IOM, PNGRCS and the National Disaster Centre.

SHELTER

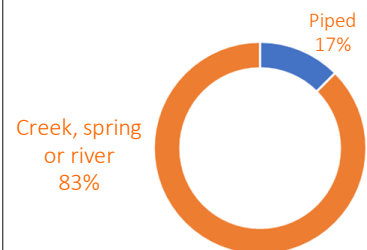
Tarpaulins were the most common type of shelter for majority of IDPs in 75% of the sites assessed.

Tents were the second most common type of shelter followed by empty buildings and makeshift shelters in 25% of the sites assessed.

IDPs previously living in school buildings (e.g. at Kabaya Primary) vacated school premises because classes were scheduled to open during the week of 22 July. This led to **overcrowding** in the available shelters in Kabaya care centre.

WATER, SANITATION & HYGIENE

Source of drinking water



Type of toilet used in most of the IDP sites:

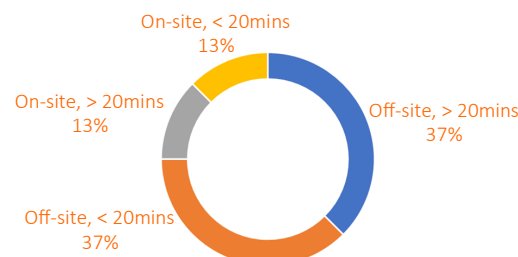
Pit latrine

Sites with no toilets—Open defecation:

Sabali Beach

Sites with separate (M/F) bathing areas: 5

Walking time to the water source (one way)

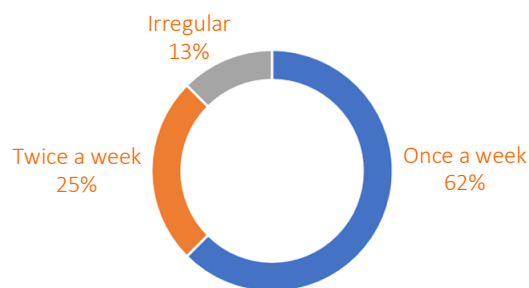


A number of IDPs contacted during the assessment reported they do not treat the water before drinking.



FOOD AND NUTRITION

Frequency of food distribution



Main source of food for IDP HHs: Food aid

Other sources of food: Own gardens—in the villages of origin

Sites reporting availability of supplementary feeding for children and, pregnant and breastfeeding women: Soi and Kabaya

HEALTH

Health patrols conducted: Yes

Health services available near site: Yes (All)

Common health related issues reported: Cough and diarrhea

PROTECTION

Sites with security being provided: 3

Lighting to majority of communal points (on site): Yes, there is lighting but it is NOT adequate (All sites)

Sites reporting existence of referral mechanisms available for survivors of Gender-Based Violence: 4

Sites reporting security incidents (on site): 4

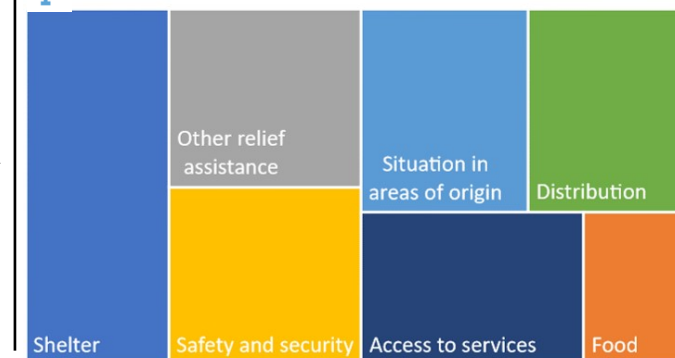
EDUCATION

Access to education services for IDP children: Yes (All sites)

Walking distance to nearby education services : <1km (50%), 1-2km (37%) and 3-5km (13%)

Reported education needs: Classroom tents

TOPICS IDPs ARE REQUESTING INFORMATION ON:



PHOTOS FROM THE FIELD



Temporary shelters at Bakada IDP care centre.



DTM Household Registration for IDPs displaced to Bakada care centre.



Temporary toilets at Kabaya IDP care centre.



An IDP at Bakada care centre reading a disaster education pamphlet distributed by IOM.

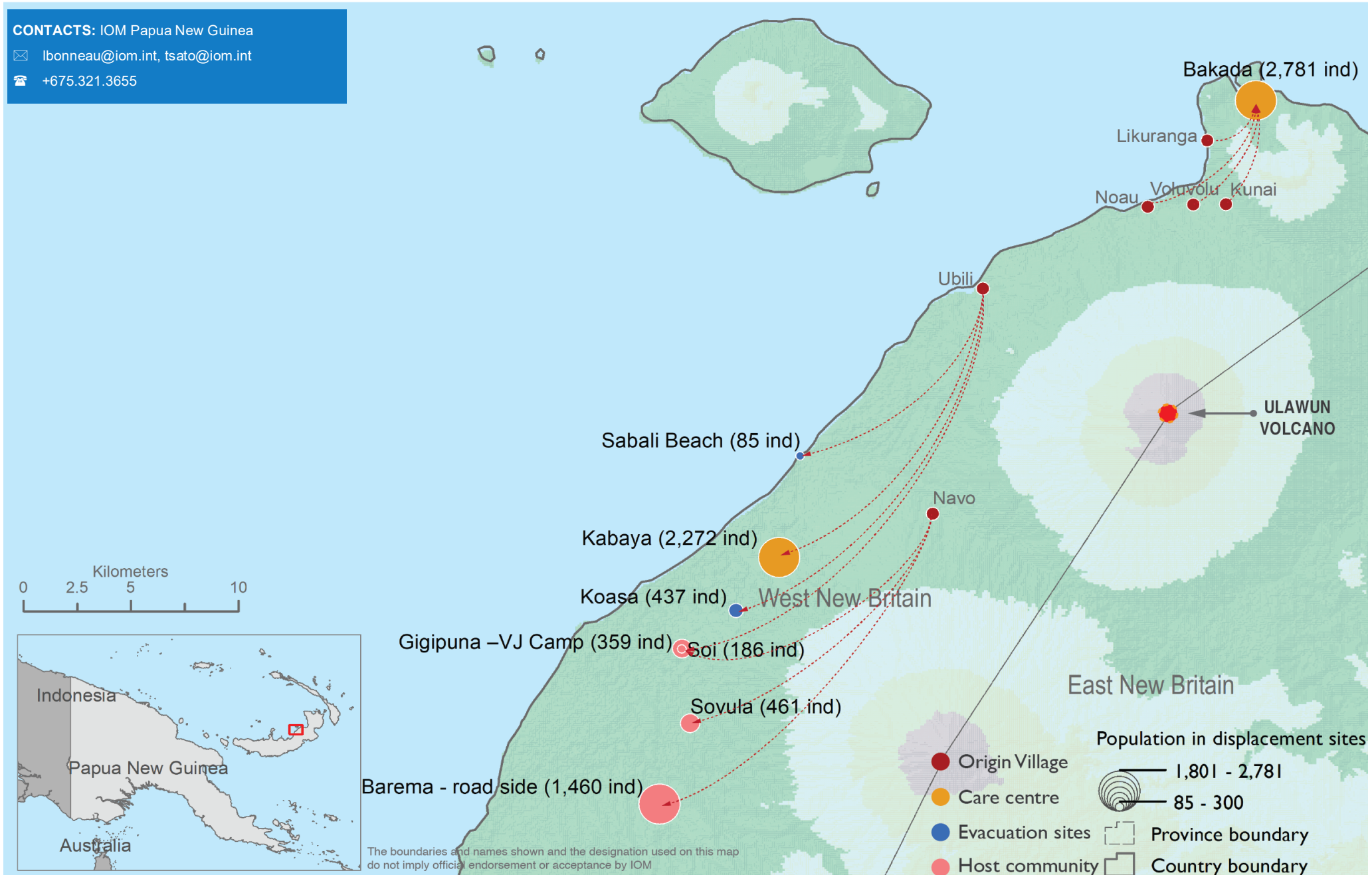
PAPUA NEW GUINEA: ULAWUN VOLCANIC ACTIVITY - IDP LOCATIONS



CONTACTS: IOM Papua New Guinea

✉ ibonneau@iom.int, tsato@iom.int

☎ +675.321.3655



DTM operations are supported by:



USAID
FROM THE AMERICAN PEOPLE

