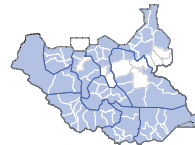


1,275,868
IDPs



866,846
Returnees



68
Counties
covered



1,443
Locations

KEY FINDINGS

- During Round 4 of Mobility Tracking (Nov-Dec 2018), 1,275,868 IDPs and 866,846 returnees were identified
- 87% of counties and 59% of sub-areas were assessed
- 33% of returnees in the assessed areas have arrived in their current location in 2018
- 20% of IDPs identified in Round 4 have been displaced during 2018

Top 5 counties assessed with the most IDPs

- Rubkona (127,790)
- Wau (90,894)
- Juba (86,418)
- Awerial (81,871)
- Jur River (69,917)

Top 5 counties assessed with the most returnees

- Bor South (108,249)
- Jur River (49,461)
- Wau (44,949)
- Juba (44,740)
- Magwi (39,422)

DTM IS SUPPORTED BY



For more information please contact
SouthSudanDTM@iom.int
or visit
displacement.iom.int/south-sudan

BACKGROUND

Data collection for Mobility Tracking Round 4 took place between November and December of 2018, following the signing of the revitalized peace agreement for South Sudan. During this time, the country saw a marked decline in conflict between armed forces, although sporadic clashes continued in parts of Unity State and Central Equatoria. The improved security situation allowed for increased accessibility for DTM enumerators, thus facilitating greater coverage of the country in Round 4. However, a spike in communal clashes, particularly cattle raids, was observed during the beginning of the dry season.

Mobility tracking aims to quantify the presence of internally displaced persons (IDPs), returnees and relocated individuals across South Sudan in displacement sites and host communities, updated in regular intervals to identify and track mobility dynamics over time. This summary represents findings for the fourth round of Mobility Tracking, conducted in South Sudan through key-informant based assessments at sub-area and location levels.

METHODOLOGY

The methodology comprises two interrelated tools: baseline area assessments, and multi-sectoral location assessments.

1. **Baseline area assessments** provide information on the presence of targeted populations in defined administrative sub-areas (following roughly the former payam system), and capture information at the group level on population categories (IDPs, returnees, relocated) and attributes such as time of arrival of the target population in the assessed location, reasons for displacement and former home areas for IDPs (both captured on majority basis), presence of and dates of displacement / return and shelter conditions. The baseline area assessment form also comprises a list of locations (defined as villages / neighbourhoods / displacement sites) hosting displaced and/or returned populations.

2. **Multi-sectoral location assessments** at village / neighbourhood or site level are conducted to gather data on a more granular level, comprising sectors such as Health, WASH, S/NFI, Protection, FSL and Education. The objective of the location level assessments is to collect some key multi-sectoral indicators on the living conditions and needs of affected populations which can enable partners to prioritize locations for more in-depth sector-specific assessments.

Key Informants: 1,049 individuals

Information is obtained and triangulated through consultation with key informants, with data captured at the location level during multi-sectoral location assessments helping to improve initial estimates provided by key informants at the sub-area level. Key informants commonly comprise local authorities, community leaders, religious leaders and humanitarian partners.

In round 4, DTM consulted **1,049 key informants at the sub-area level (345 sub-areas)** in addition to direct observation and consultations at the location level. County and payam representatives made up 45 per cent of key informants followed by IDP and community leaders, who represented 35 per cent. NGO and other humanitarian workers constituted 12 per cent with religious leaders making up 7 per cent (1% unknown). The majority of key informants were male (91%).

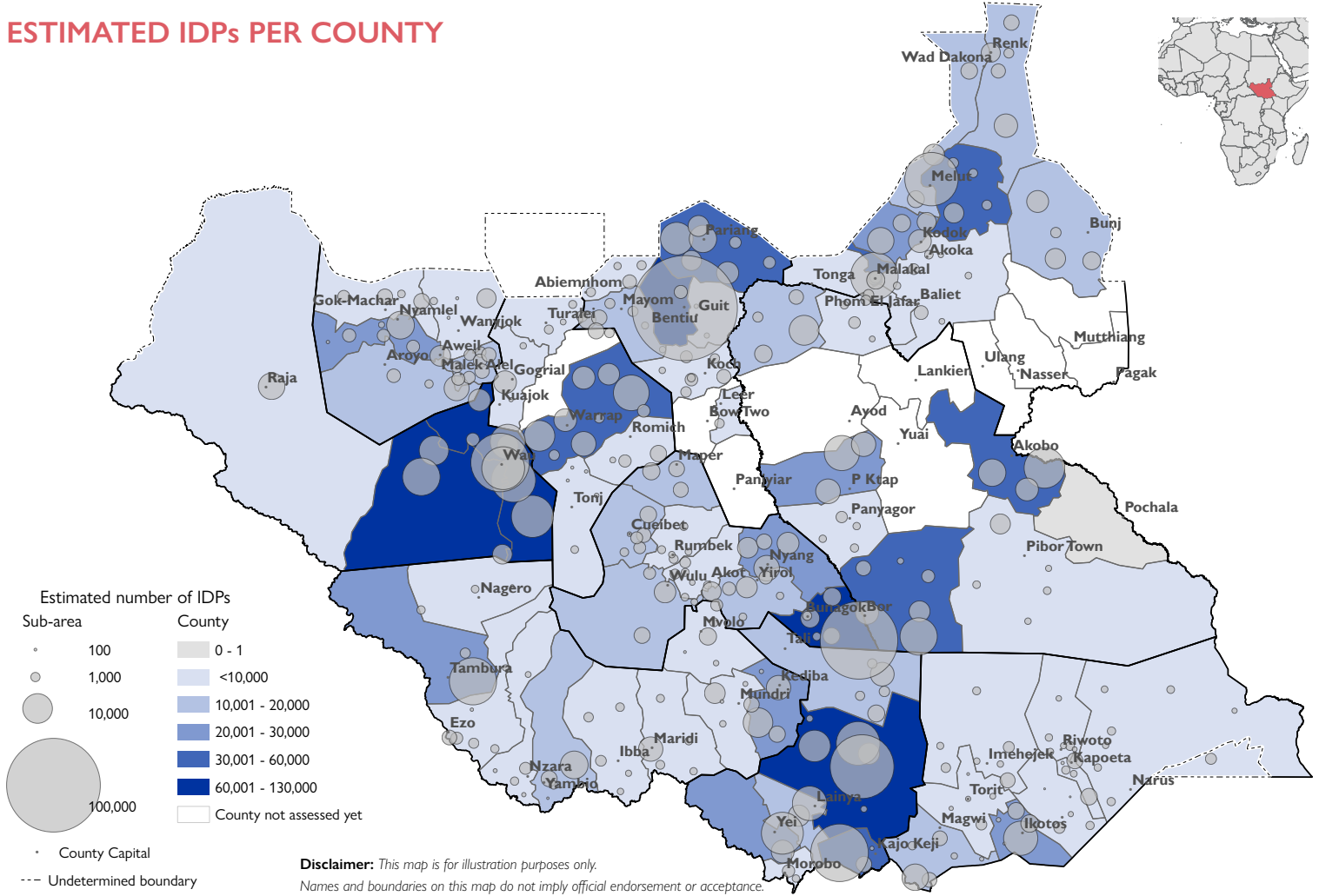
SCOPE

In Round 4, DTM accessed 1,443 locations (villages / neighbourhoods and displacement sites) in 345 sub-areas across 87 per cent of South Sudan's 78 counties in all ten states. Locations are assessed upon confirmation of presence of targeted populations. DTM conducted multi-sectoral assessments at

87% of mapped villages / neighbourhoods (1,192 / 1,365)

99% of mapped displacement sites (77 / 78)

ESTIMATED IDPs PER COUNTY

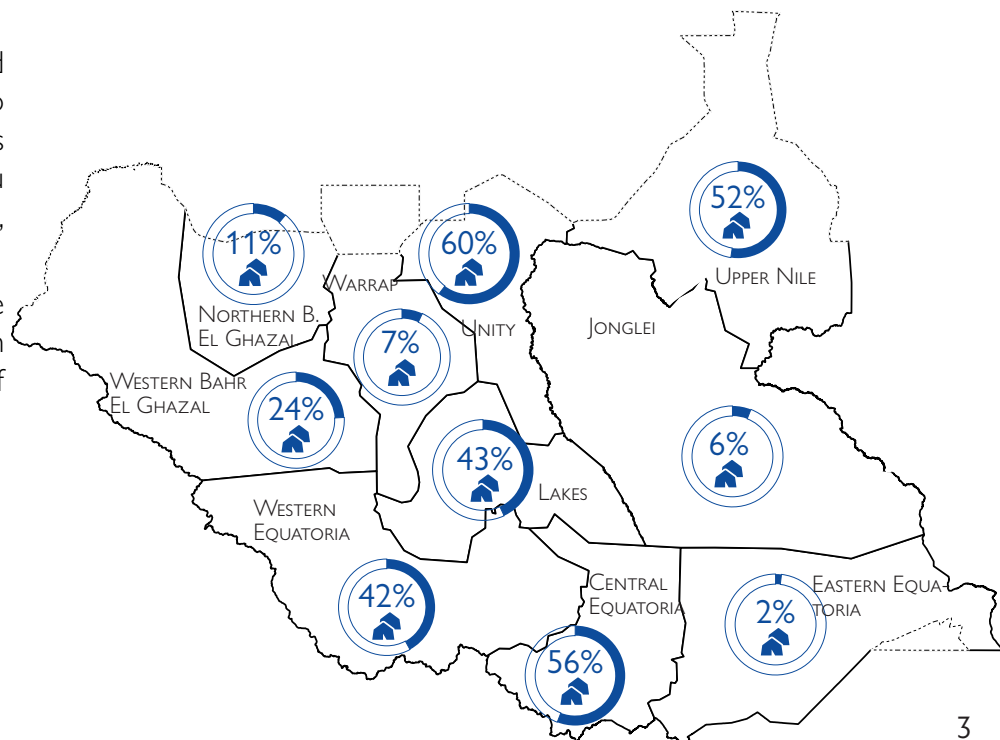
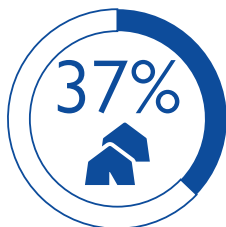


PERCENTAGE OF IDPs LIVING IN SITES / HOST COMMUNITIES

Overall, 37 per cent of IDPs were reported to live in 77 displacement sites as opposed to host community settings. The percentage was especially high in Unity (60%) where Bentiu PoC site is located, and Central Equatoria, where Juba PoC 1 and 3 are located.

IDPs were most commonly found to be living alongside host communities in Eastern Equatoria where only two per cent of displaced lived in displacement sites.

OVERALL



INTERNAL DISPLACEMENT

A total of 1,275,868 IDPs were identified in this round of data collection, with one fifth (20%) having arrived in their present location in 2018 alone.

Unity State continues to host the largest number of IDPs, a total of 201,385, primarily due to the presence of Bentiu PoC site, currently the largest PoC site in the country. This is reflected in the fact that Rubkona County hosts 63 per cent of the state's IDPs. The state has also experienced frequent clashes between armed forces, even after the ceasefire was agreed to in June and the peace agreement was signed in September 2018. As a result, new displacement continued, and the unstable security situation prevented many IDPs from returning to their areas of habitual residence. Similar trends are also reflected in data collected in Central Equatoria (188,639 IDPs) and Western Bahr el Ghazal (168,875 IDPs), both of which also host a significant portion of the country's IDPs and PoC sites. Both locations experienced several clashes between armed forces in 2018. Furthermore, communal clashes in Western Bahr el Ghazal continue to forcibly displace populations, albeit at a smaller scale.

In the majority of states, conflict between armed forces accounted for the primary reason of displacement. Some states were more greatly impacted by conflict compared to others, primarily Upper Nile (100%), Central Equatoria (97%), Unity (95%) and Western Equatoria (95%). Two exceptions to this trend were noted, specifically Lakes and Jonglei, where communal clashes accounted for the primary reason of displacement. To date, ongoing cattle raids and clashes between pastoralists and farmers continue to be documented amongst communities in both states.

1,140 IDP LOCATIONS

At over half of all IDP locations (63%), the majority of IDPs was displaced from within the same county.

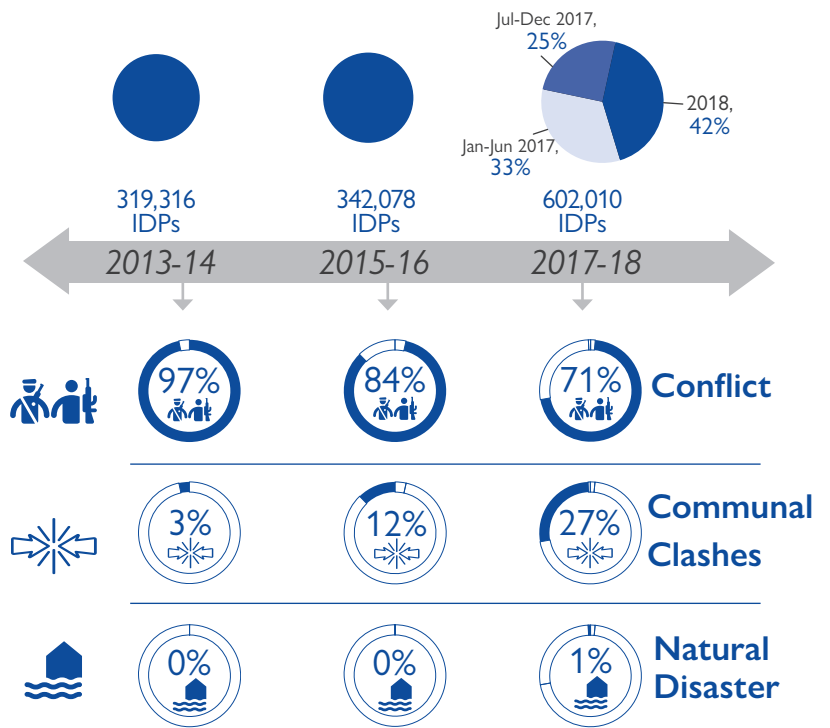
At 21% of IDP locations, the majority of IDPs was displaced from within the same state, but a different county.

At 15% of IDP locations the majority of IDPs was displaced from another state (1% unknown).

At 74% of assess IDP locations in Northern Bahr el Ghazal, the majority of IDPs were displaced from another state.

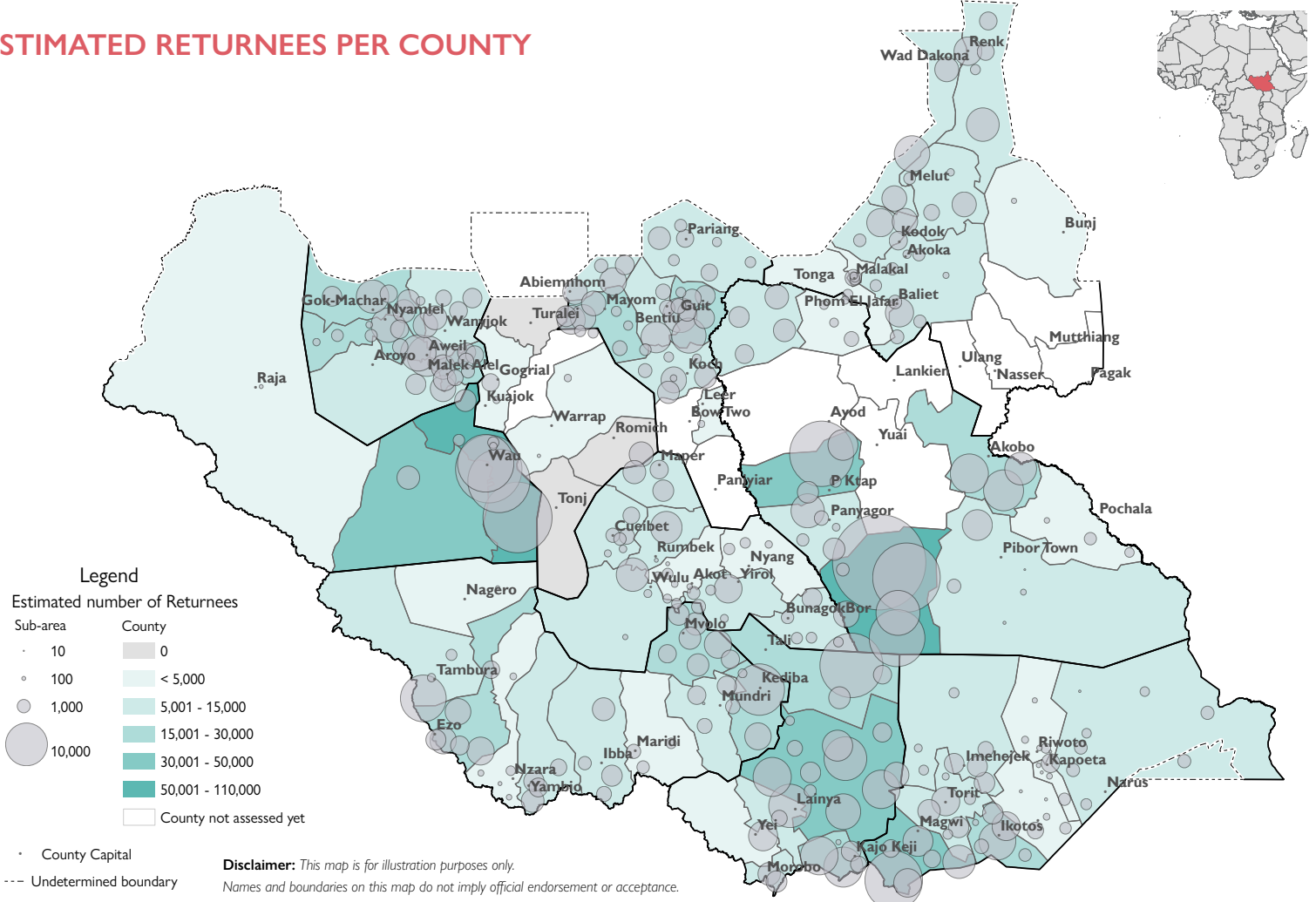
For Unity, Western and Central Equatoria, a large percentage of IDP locations reported that the majority of IDPs were displaced from within the same county: 79%, 78% and 78% respectively.

Period of arrival in assessed location for currently displaced population and reasons for displacement*



* Please note that this graph does not represent the number of individuals displaced during a given period. Figures are limited to those who remain currently displaced persons, i.e. excluding anyone who was displaced but has since returned. Time of displacement is unknown for 12,464 IDPs (not represented). NOTE: in 2017-2018 for 1% of the displaced populations, the reason is unknown

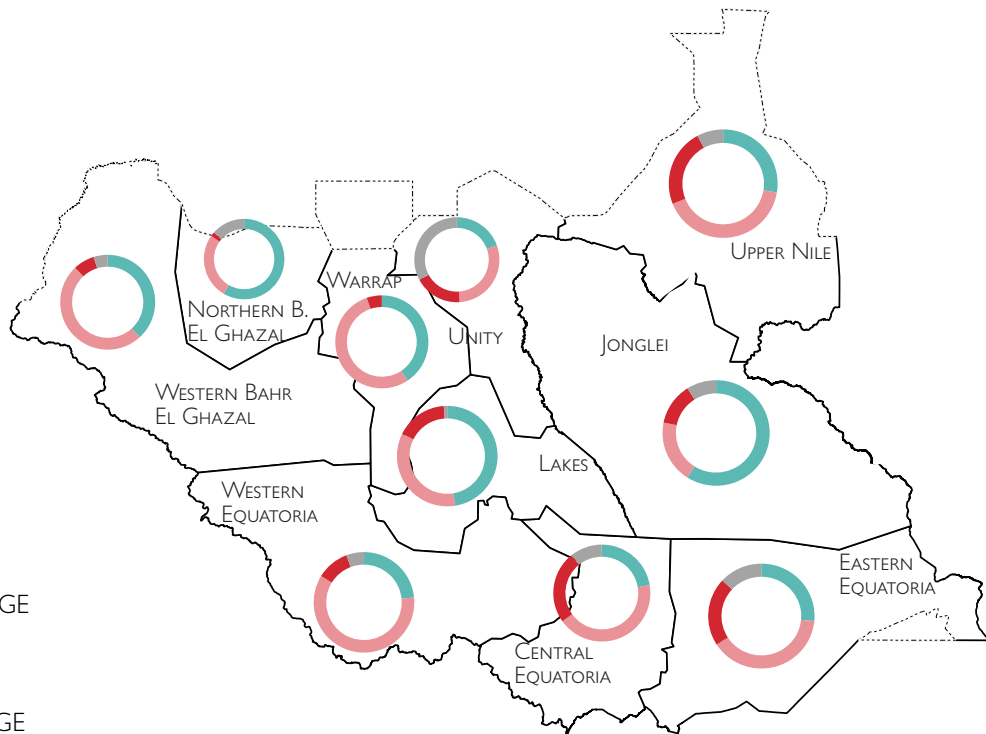
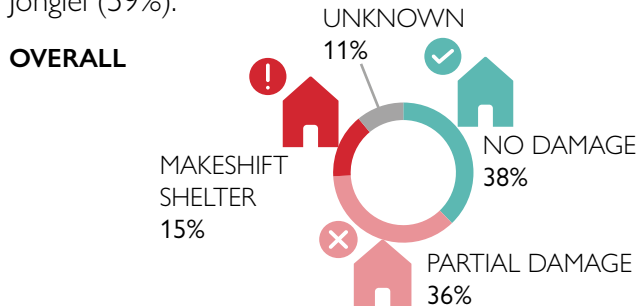
ESTIMATED RETURNEES PER COUNTY



CONDITION OF RETURNEE HOUSING

Regarding the status of returnee's housing, 15 per cent are currently reported living in destroyed or make-shift shelters. Over a third are living in partially damaged housing (36%), whereas 38 per cent live in undamaged homes (11% unknown).

Two-thirds of returnees in Eastern and Central Equatoria were found to live in severely (27% and 24%) or partially (39% and 43%) damaged housing. The highest percentage of returnees living in undamaged houses was reported in Jonglei (59%).



RETURN MOVEMENTS

A total of 866,846 returnees (154,925 households) were identified in Round 4 of Mobility Tracking, with a third of them arriving in their present location in 2018, 70 per cent when looking at 2017 and 2018 combined. Returns are more pronounced in some areas than others:

The highest number of returns were observed in Western Equatoria which hosts 46,957 returnees, 50 per cent of whom arrived in 2018 alone. Eastern Equatoria currently hosts the second largest number of returnees, 44,869 in total, 46 per cent of whom arrived in 2018. In Magwi County (Eastern Equatoria), 18,985 returnees were captured in data collection, the highest number for any county, both at the state and national levels. The proximity of both Eastern and Western Equatoria to international borders, as well as relative stability in terms of security in recent months, potentially encourages conditions for return. Furthermore, the Equatoria region has a shorter history of conflict and displacement in the recent civil war, in contrast to other areas such as Unity.

1,132 RETURNEE LOCATIONS

At over half of all assessed returnee locations, the majority had returned from within the same county (59%).

At 15% of returnee locations, the majority had returned from within the same state, but a different county.

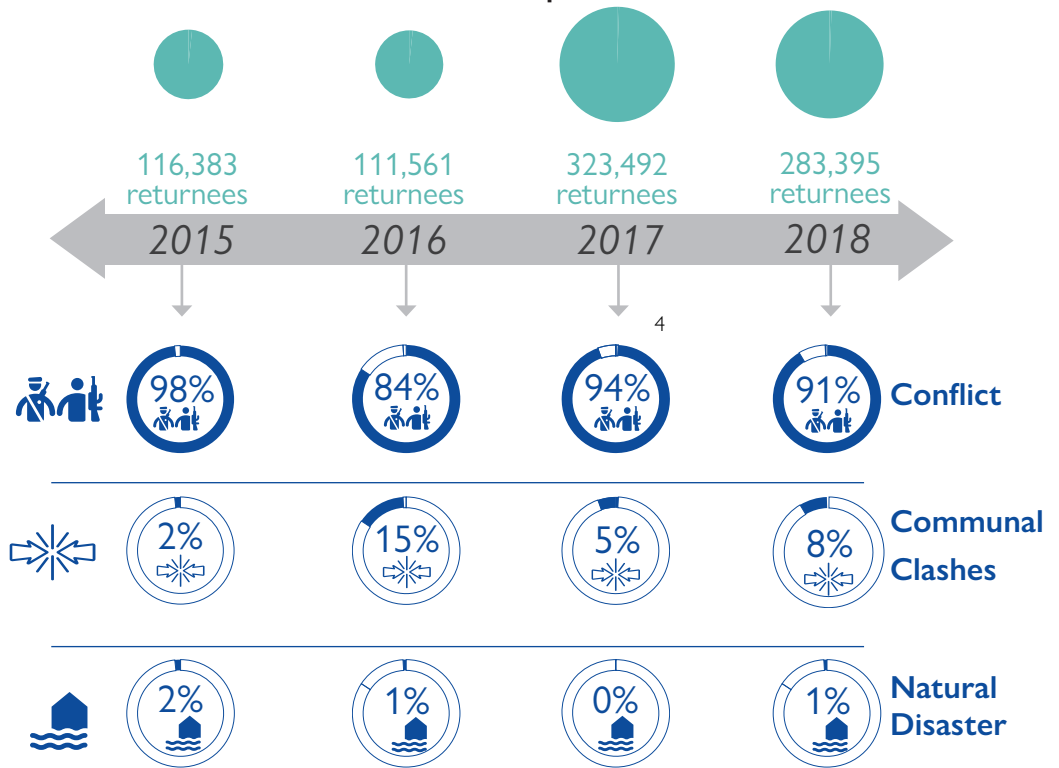
At 8% of returnee locations, the majority had returned from within South Sudan but a different state.

At 16% of returnee locations, the majority had returned from another country (3% unknown).

At all returnee locations in Warrap State the majority had returned from the same county and the percentage was high for locations in Western Bahr el Ghazal, Western and Central Equatoria (79%, 79% and 77% respectively).

At nearly all returnee locations in Northern Bahr el Ghazal the majority returned from other countries (94%).

Number of returnees per year of return and reason for initial displacement*



RELOCATIONS

In Round 4, a total of 55,526 individuals (9,945 households) were identified as relocated to a new area of habitual residence. This refers to individuals who have chosen a new habitual residence after displacement, either integrating within their displacement location or resettling to a third location. This was particularly observed in Jonglei State which accounted for 16,502 (30%) of relocated individuals, primarily located in Akobo County (4,640 ind.). Upper Nile State accounted for the second largest proportion of relocated individuals (9,287 ind.; [17%]), concentrated in Panyikang (2,964 ind.), Manyo (2,756) and Malakal (2,019) counties. Figures on relocated individuals may remain underestimated considering that it can be difficult for key informants to assess whether individuals who have arrived from other areas have an intention to remain settled long term.

* Figures are limited to populations returned since 2015 whose return was sustained until the moment of data collection, not reflecting people who may have returned but subsequently experienced renewed displacement. NOTE: for 2017 initial reasons for displacement are unknown for 1% 6

DEFINITIONS



IDPs

Persons or groups of persons who have been forced or obliged to flee or to leave their homes or places of habitual residence, in particular as a result of or in order to avoid the effects of armed conflict, situations of generalized violence, violations of human rights or natural or human-made disasters, and who have not crossed an internationally recognized state border.

South Sudan: Time of arrival in assessed area considered: 2013 to 2018



Returnees

Someone who was displaced from their habitual residence either within South Sudan or abroad, who has since returned to their habitual residence. Please note: the returnee category, for the purpose of DTM data collection, is restricted to individuals who returned to the exact location of their habitual residence, or an adjacent area based on a free decision. South Sudanese displaced persons having crossed the border into South Sudan from neighboring countries without having reached their home are still displaced and as such not counted in the returnee category.*

South Sudan: Time of arrival in assessed area considered: 2015 to 2018



Relocated Individuals

Someone who was displaced from their habitual residence either within South Sudan or abroad, who has since relocated voluntarily (independently or with the help of other actors) to another location than their former habitual residence, without an intention to return to their former habitual residence.

CLICK TO ACCESS DATA COLLECTION FORM - SUBAREA LEVEL

DTM B2F BASELINE ASSESSMENT FORM

Date of assessment: DD / MM / YYYY
Former state: []
Name Enumerator 1: [] Former county: []
Name Enumerator 2: [] Former payam: []

A. Are there IDPs currently present in this payam? Yes No
If yes: How many households? []
How many individuals? []

B. Of those IDPs currently present, please detail:

| Time of arrival | # of HH | # of IND | Place of origin (majority) |
|-----------------|---------|----------|----------------------------|
| 2013/2014 | | | State / Country |
| 2015/2016 | | | State / Country |
| Jan-June 2017 | | | State / Country |
| July - Dec 2017 | | | State / Country |
| Since 2018 | | | State / Country |

C. Reasons for displacement of IDPs in the payam, per year of arrival (Individuals)

| | 2013/14 | 2015/16 | Jan-Jun 17 | Jul-Dec 17 | 2018 |
|------------------|---------|---------|------------|------------|------|
| Conflict | | | | | |
| Communal clashes | | | | | |
| Natural disaster | | | | | |
| Other: | | | | | |
| TOTAL | | | | | |

D. Type of IDP temporary settlements

| | #HH | #IND |
|---|-----|------|
| 1- In IDP sites | | |
| 2- In host family / community accommodation | | |

E. Are there IDPs who have been displaced multiple times? Yes No
If yes: How many IDPs have been displaced more than 1 time? []

F. What is the estimated number of the relocated population in this payam?

HH [] #IND []

G. What is the estimated number of the host population in this payam?

HH [] #IND []

A.1. Are there returnees currently present in this payam? Yes No
If yes: How many households? []
How many individuals? []

B.1. Of those returnees currently present, please detail:

| Time of arrival | # of HH | # of IND | Returned from where? (majority) |
|-----------------|---------|----------|---------------------------------|
| 2015 | | | State / Country |
| 2016 | | | State / Country |
| Jan-June 2017 | | | State / Country |
| July - Dec 2017 | | | State / Country |
| Since 2018 | | | State / Country |

C.1. Reasons for displacement of returnees in the payam, per year of return (Individuals)

| | 2015 | 2016 | Jan-Jun 17 | Jul-Dec 17 | 2018 |
|------------------|------|------|------------|------------|------|
| Conflict | | | | | |
| Communal clashes | | | | | |
| Natural disaster | | | | | |
| Other: | | | | | |
| TOTAL | | | | | |

D.1. Status of returnee housing

| | #HH | #IND |
|---|-----|------|
| 1- No damage | | |
| 2- Partially damaged | | |
| 3- Severely damaged - living in makeshift shelter | | |

E.1.1. Are there houses in this payam occupied by non-own? No Yes
E.1.2. Are there people displaced from this payam who have not returned yet?

No Yes # HH [] #IND []

F.1.1. If yes, where did the majority go?

Same county Other county: [] Abroad

F.1.2. When did the majority leave? 2013/14 2015/16 2017 2018

DTM B2F BASELINE ASSESSMENT FORM

G. LIST OF IDP/RETURNEE LOCATIONS

For reasons of displacement: 1. Conflict, 2. Communal Clashes, 3. Natural Disaster, 4. Other

| S/N | Village / Site Name | GPS No. | Waypoint No. | Latitude (N) | Longitude (E) | Reason | IDP DETAILS | | RETURNEE DETAILS | |
|-----|---------------------|---------|--------------|--------------|---------------|--------|---------------|-------------------------|----------------------|-------------------------------|
| | | | | | | | Location type | State/Country of origin | Estimated # returned | State/Country of displacement |
| 1 | | | | | | | S | HC | | |
| 2 | | | | | | | S | HC | | |
| 3 | | | | | | | S | HC | | |
| 4 | | | | | | | S | HC | | |
| 5 | | | | | | | S | HC | | |
| 6 | | | | | | | S | HC | | |
| 7 | | | | | | | S | HC | | |
| 8 | | | | | | | S | HC | | |
| 9 | | | | | | | S | HC | | |
| 10 | | | | | | | S | HC | | |
| 11 | | | | | | | S | HC | | |
| 12 | | | | | | | S | HC | | |
| 13 | | | | | | | S | HC | | |
| 14 | | | | | | | S | HC | | |
| 15 | | | | | | | S | HC | | |

H. KEY INFORMANT DETAILS

| Type of No. | Name | Type/Organization | Sex | Contact details |
|-------------|------|-------------------|-----|-----------------|
| 1 | | | | |
| 2 | | | | |
| 3 | | | | |
| 4 | | | | |

L. Observations

11 Do key informants have list of IDPs/Returnees? All Most Some None
12 Is the data consistent among key informants All Most Some None
13 Is the KI data consistent with your observation All Most Some None

Returnees: Individuals previously displaced who return to their places of habitual residence.
Relocated individual: Someone who was displaced from their habitual residence, who has since relocated voluntarily to another location, without an intention to return to their former habitual residence.

* DTM data collection does not assess legal status of those who have returned from abroad, or who find themselves in displacement in South Sudan after a period of displacement abroad. As such, it is not possible for DTM to tell how many individuals hold a refugee registration status in neighbouring countries.

CLICK TO ACCESS MAPS



[IDP Sites](#)



[Presence of IDPs/Returnees by County](#)

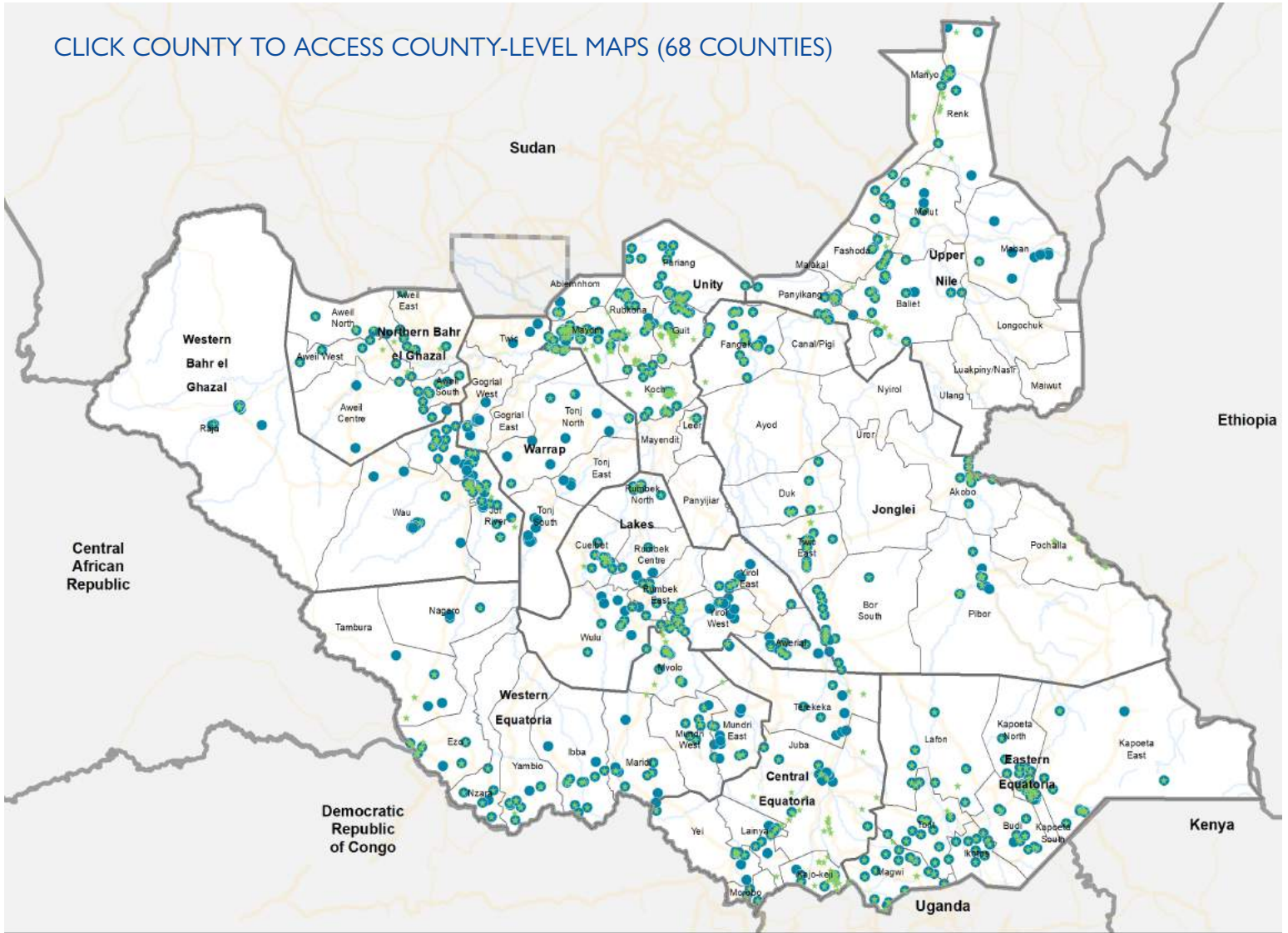


[IDP population by County](#)



[Returnee population by county](#)

CLICK COUNTY TO ACCESS COUNTY-LEVEL MAPS (68 COUNTIES)



CLICK TO ACCESS DATASETS



01/10 [Mobility Tracking round 4: Baseline Assessment](#)

345 sub-areas
1,443 locations

01/10 [Mobility Tracking round 4: Village / Neighbourhood Assessment](#)

1,192 villages /
neighbourhoods

01/10 [Mobility Tracking round 4: Site Assessment](#)

77 displacement
sites