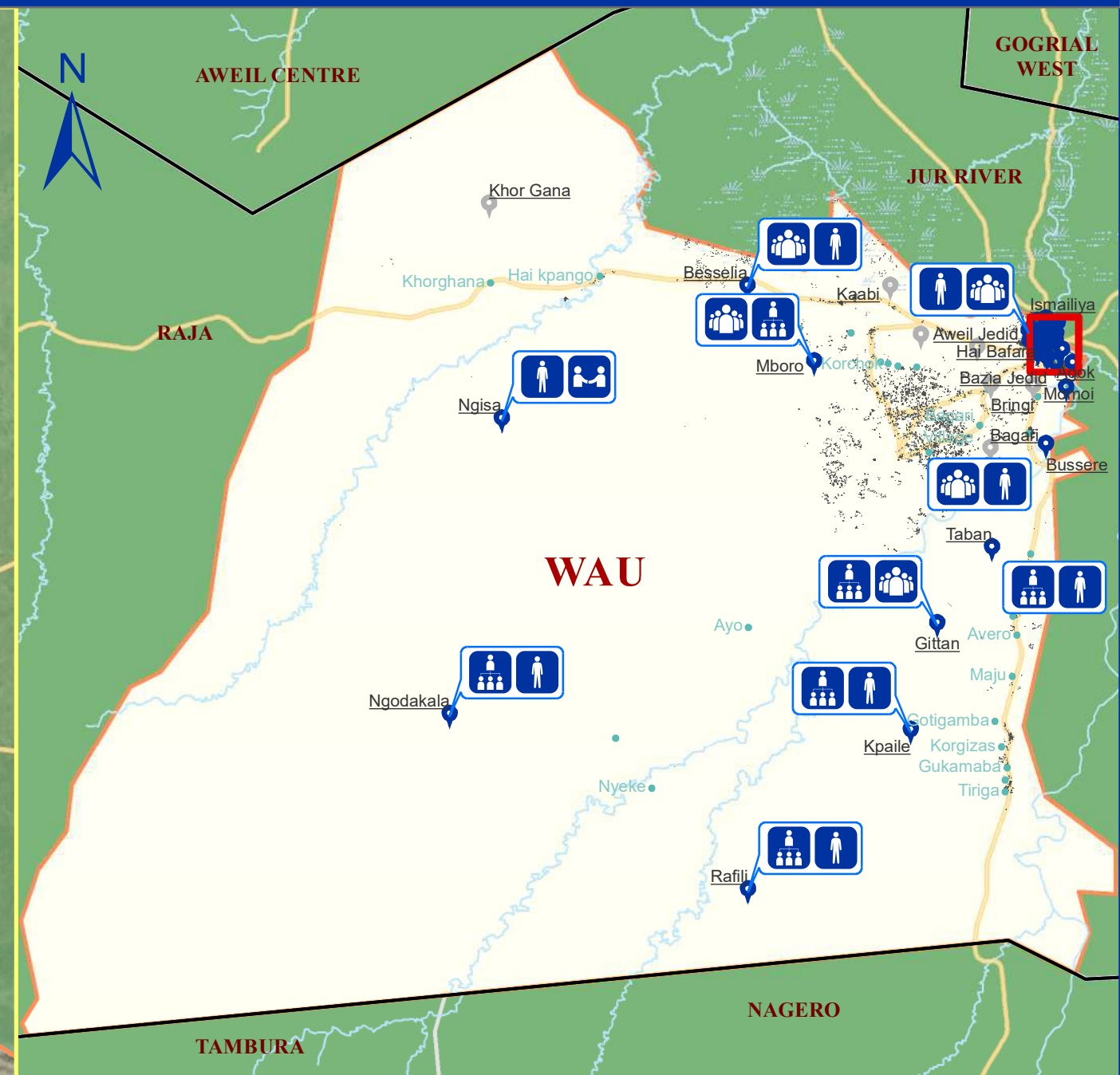
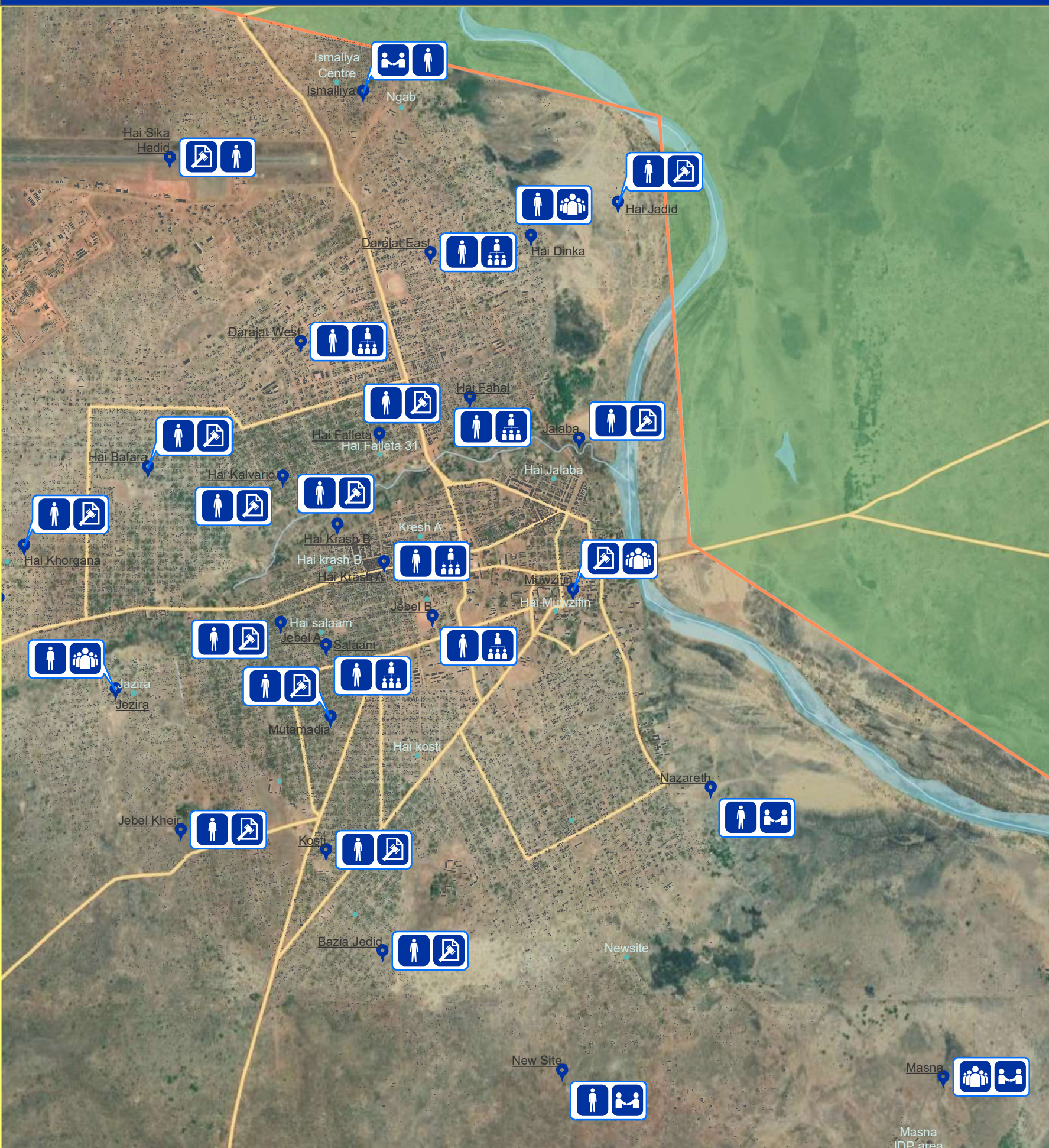


# Common Land Ownerships

# Western Bahr el Ghazal\_Wau






## Legend

## Boma Coverage

- Assessed
- Not assessed
- Boma Name
- Village

- State
- County
- County of interest
- Buildings
- Marshland

-  Waterbodies  
 Roads Roads  
 Waterways

## Land Ownership types

- Individual
- Free Communal
- Ancestral
- Leased Land
- Informal Land Tenure

Data Source: IOM/DTM, NBS, OCHA, Maxar, OSM

Year: 2019

Comments & feedback: [southsudandtm@iom.int](mailto:southsudandtm@iom.int)

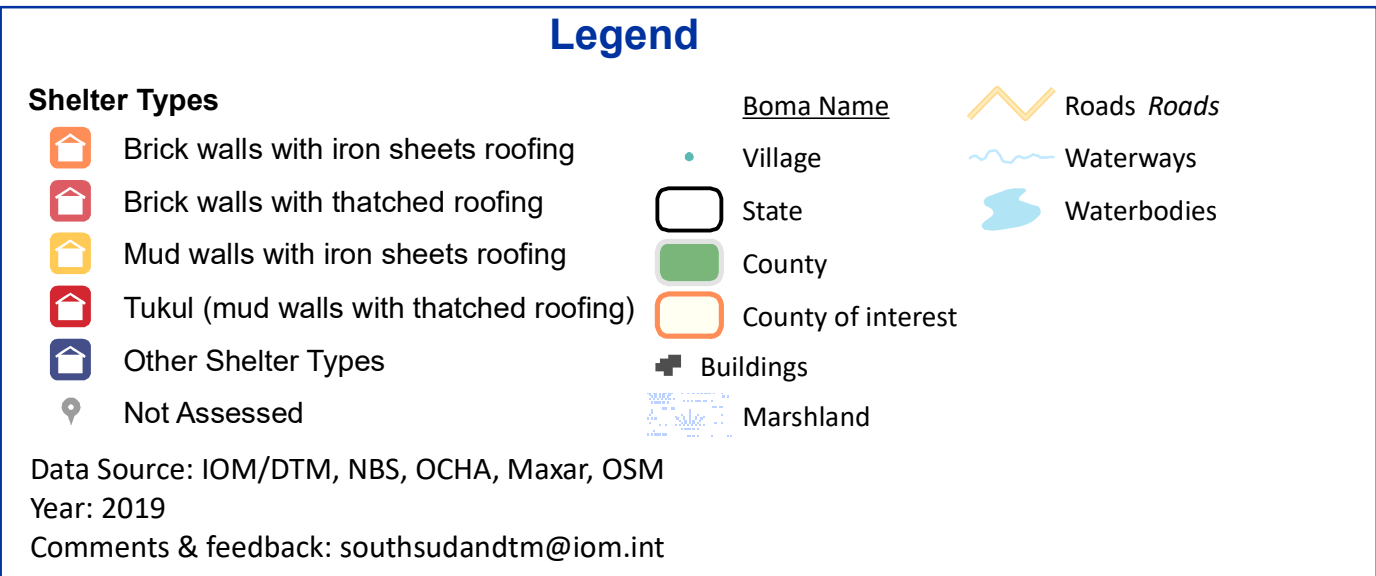
The boundaries on the map do not imply official endorsement or acceptance by the Government of the Republic of South Sudan or by IOM. The map is for planning purposes only. IOM cannot guarantee that the map is error free and therefore accepts no liability for consequential or indirect damages arising from its use.

Kilometers

0 15 30 60





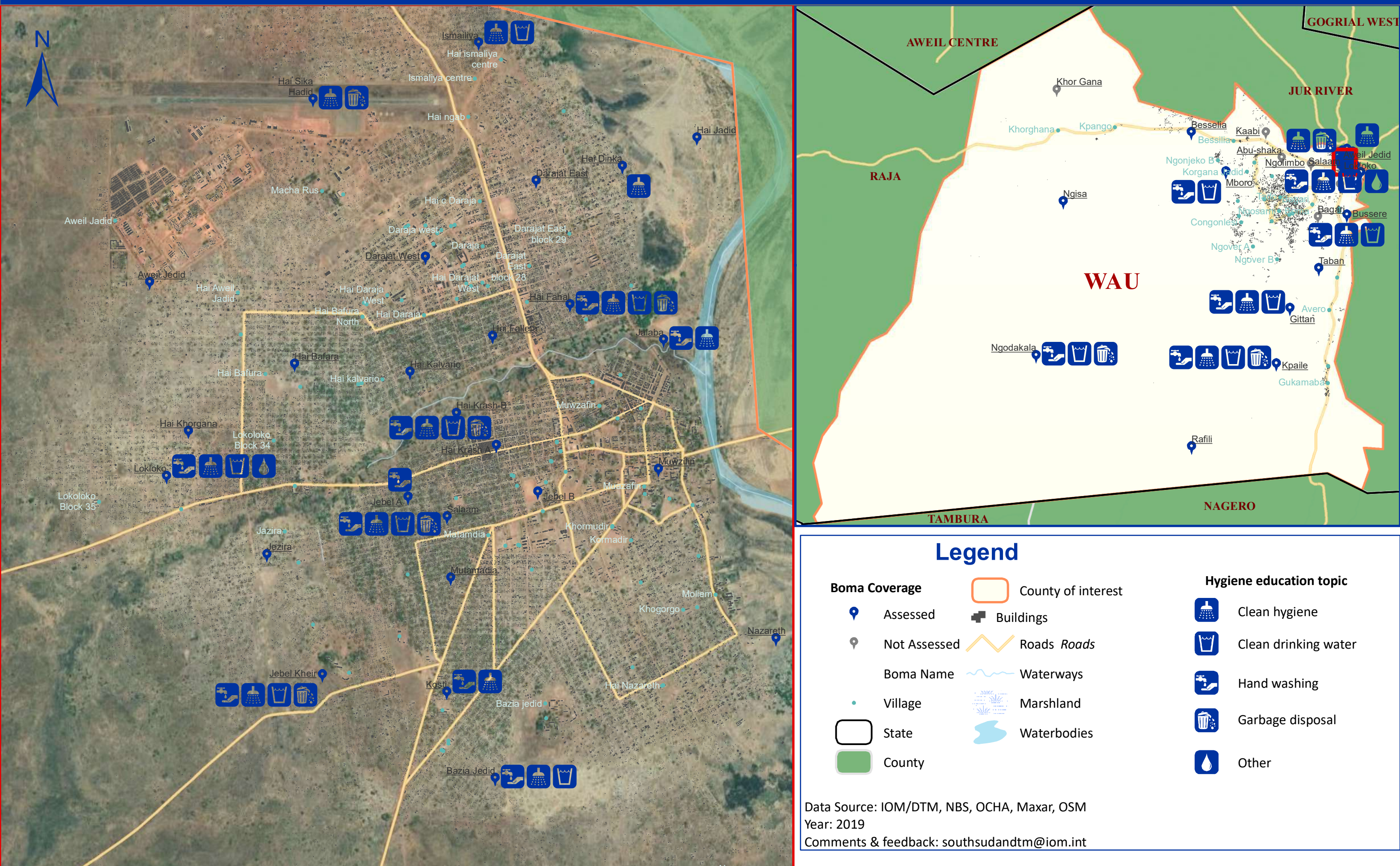


The boundaries on the map do not imply official endorsement or acceptance by the Government of the Republic of South Sudan or by IOM. The map is for planning purposes only. IOM cannot guarantee that the map is error free and therefore accepts no liability for consequential or indirect damages arising from its use.



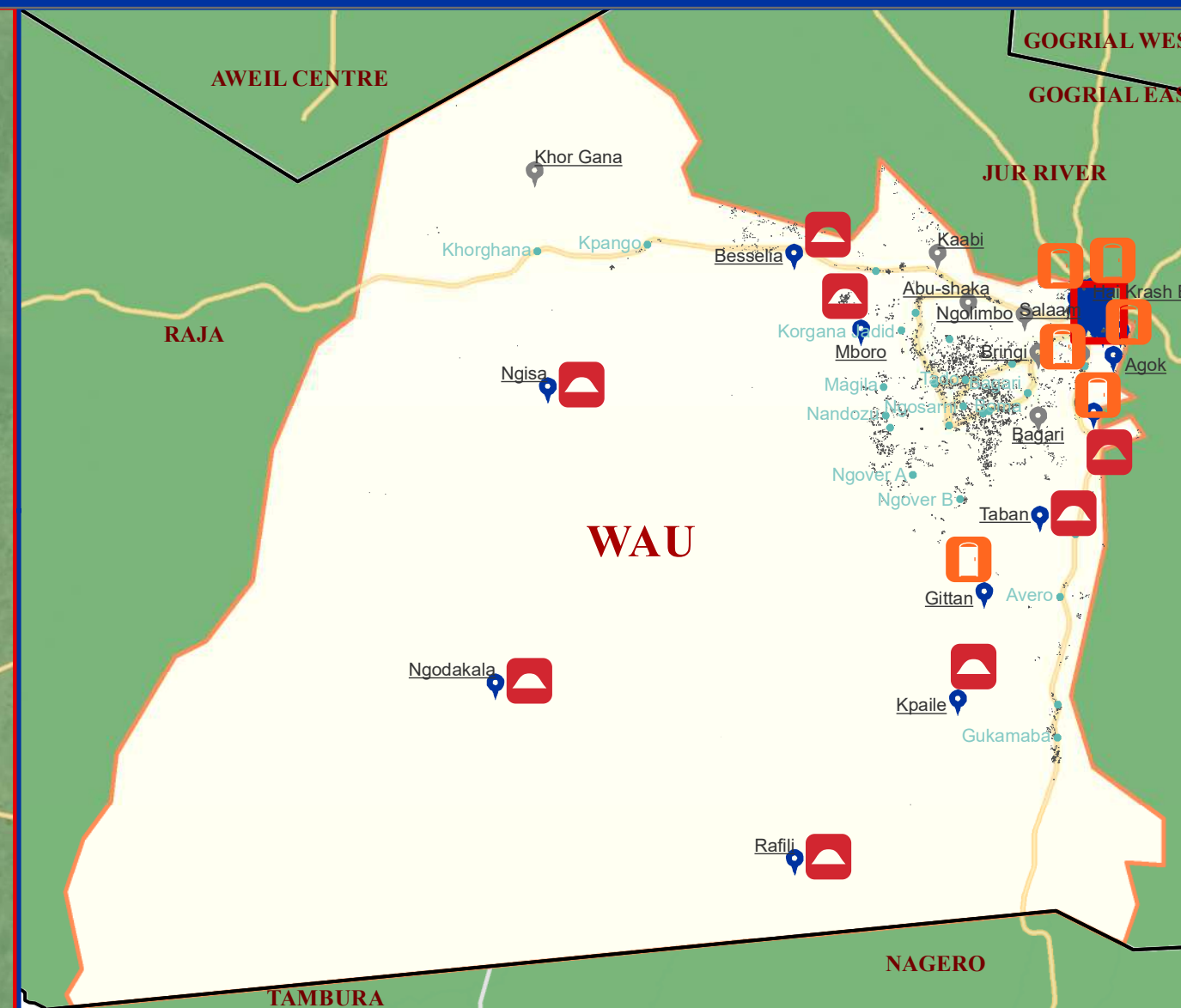
Received hygiene and sanitation education topic

Western Bahr el Ghazal\_Wau





**GOGRIAL WEST**  
**GOGRIAL EAST**



## DTM\_FISVAS.dbo.MAP\_Boma\_Latrine\_Types\_and\_Open\_Defecation

### Most common form of defecation

- Household latrines
- Open air/bush
- Public latrines

Comments & feedback: [southsudandtm@iom.int](mailto:southsudandtm@iom.int)

The boundaries on the map do not imply official endorsement or acceptance by the Government of the Republic of South Sudan or by IOM. The map is for planning purposes only. IOM cannot guarantee that the map is error free and therefore accepts no liability for consequential or indirect damages arising from its use.

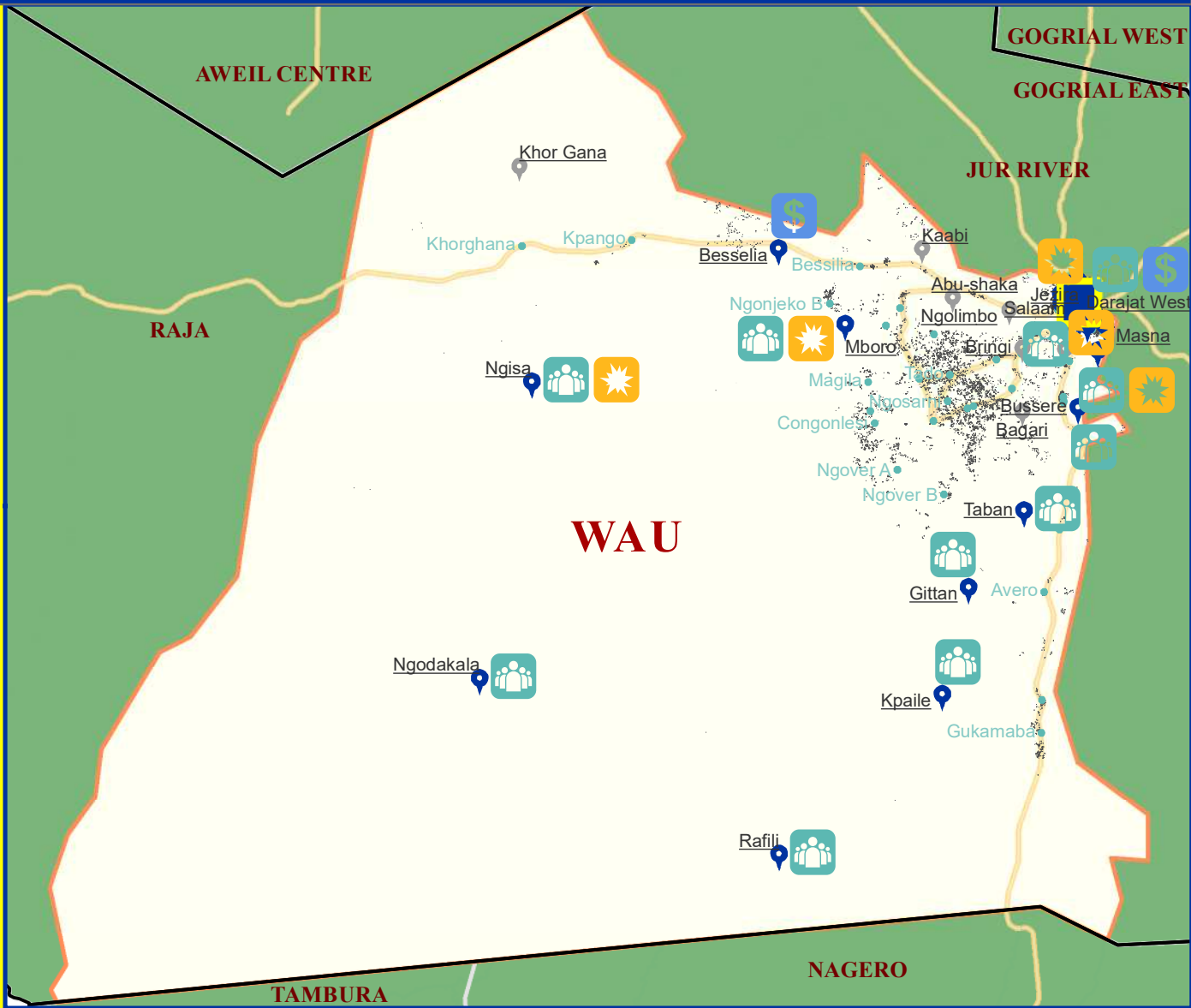
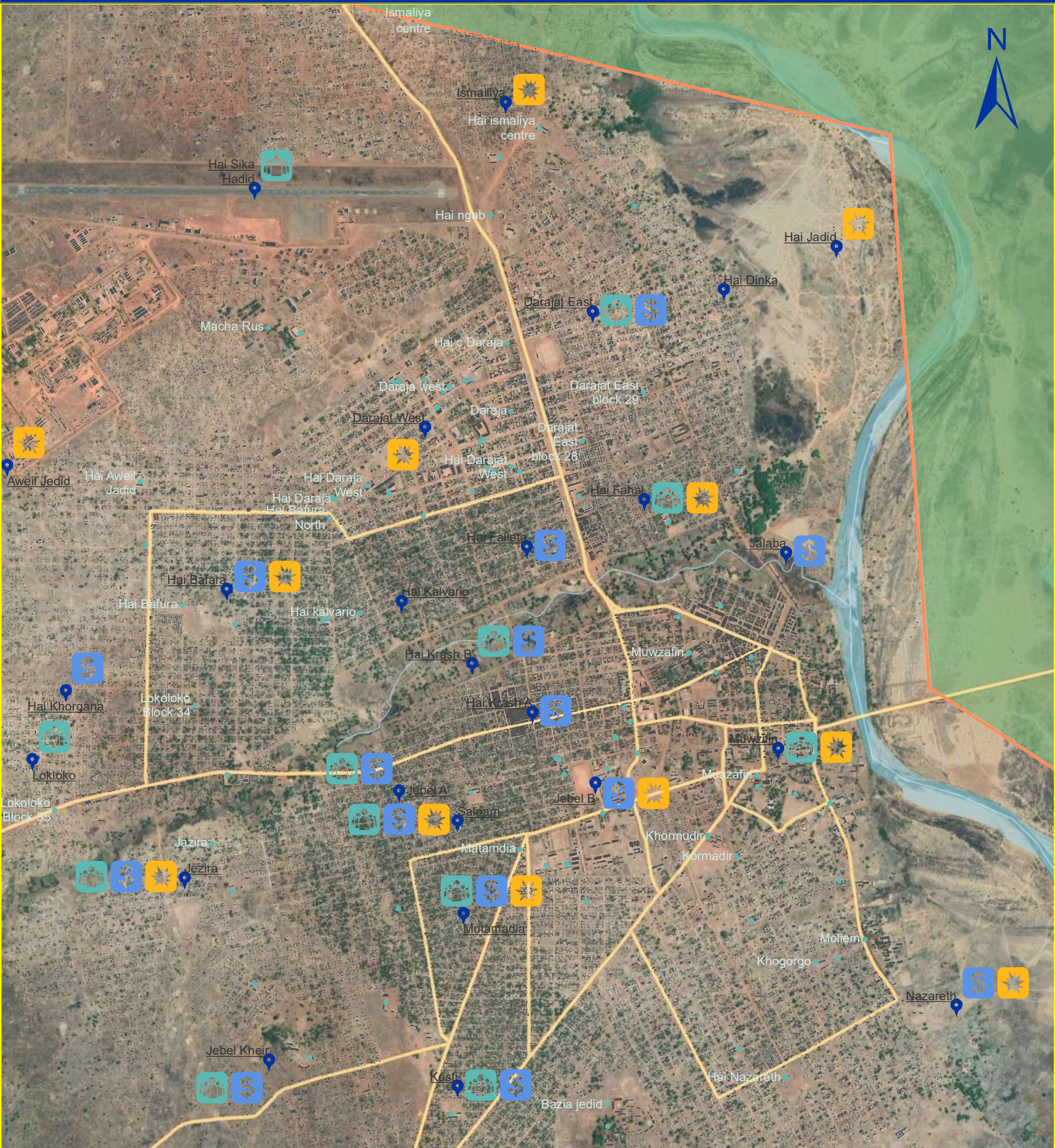
0 15 30 60





# Water managment and related conflict

Western Bahr el Ghazal\_Wau



## Legend

### Boma Coverage

- Assessed
- Not Assessed
- Boma Name
- Village
- Buildings
- State

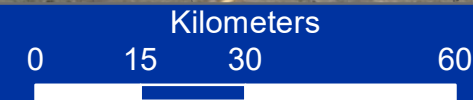
- Roads
- County of interest
- County
- Waterways
- Marshland
- Waterbodies

### Water managment and related conflict

- Conflict water in communities
- Water user committee
- Water sources used as at a fee

Data Source: IOM/DTM, NBS, OCHA, Maxar, OSM  
Year: 2019  
Comments & feedback: [southsudandtm@iom.int](mailto:southsudandtm@iom.int)

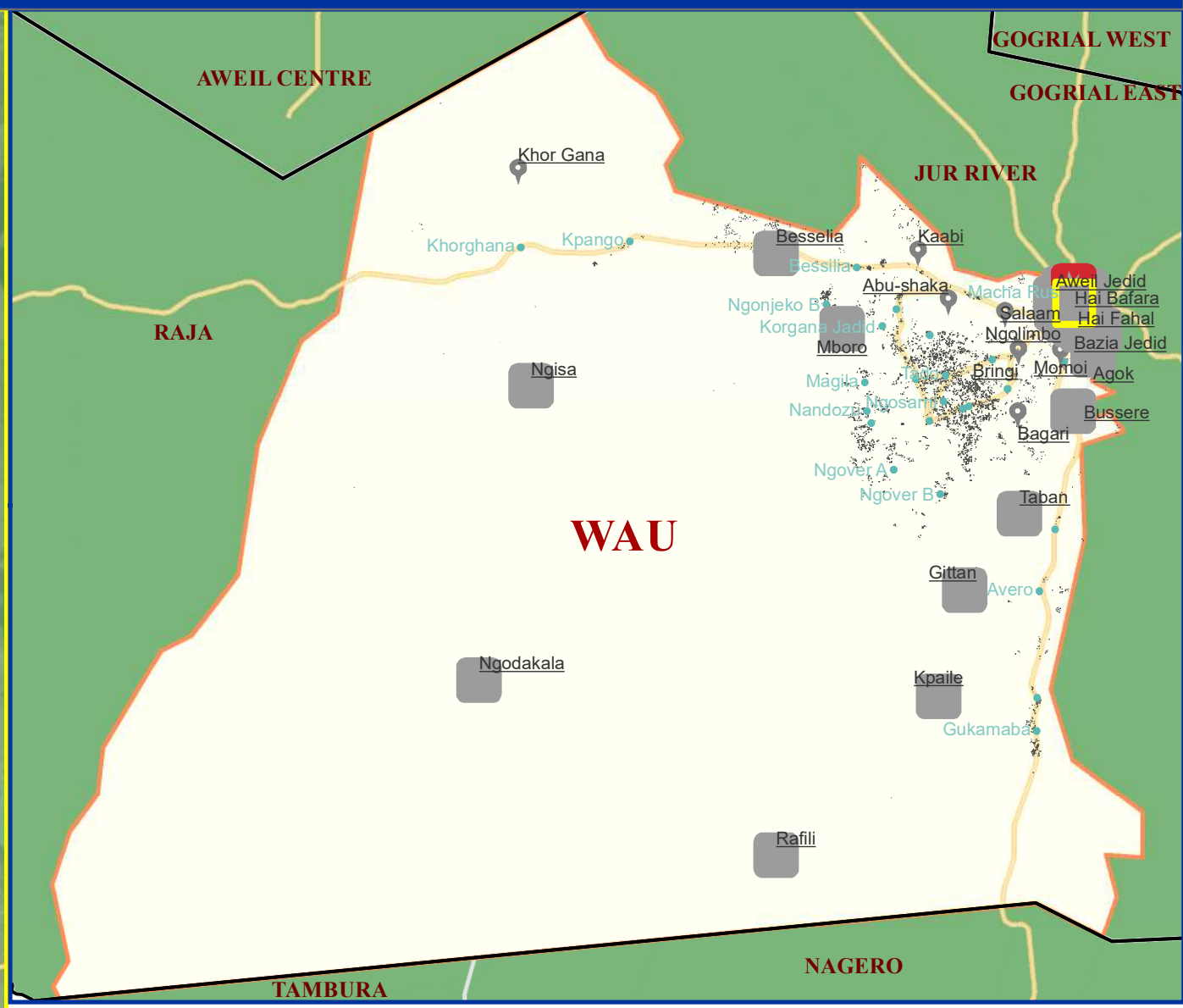
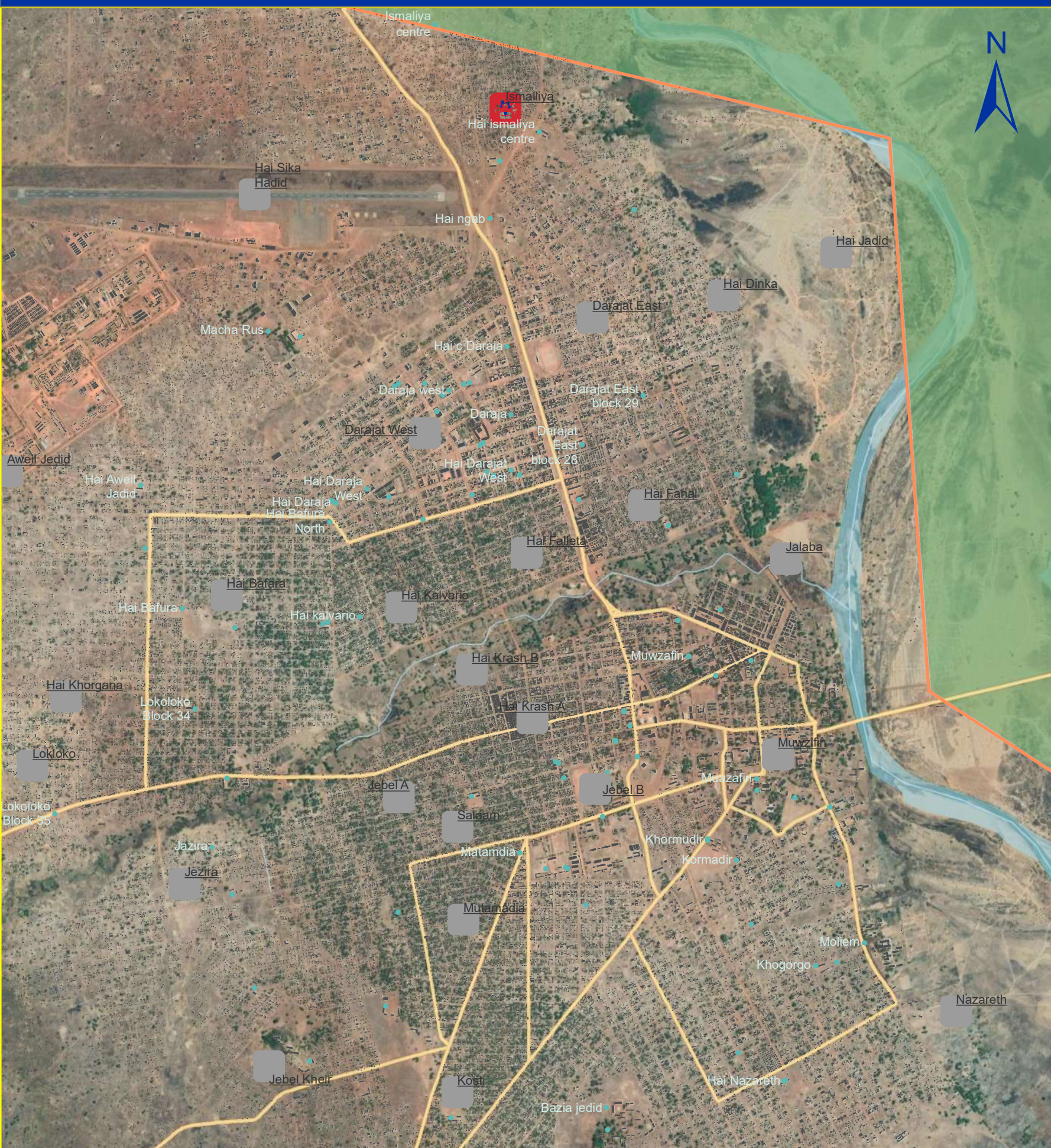
The boundaries on the map do not imply official endorsement or acceptance by the Government of the Republic of South Sudan or by IOM. The map is for planning purposes only. IOM cannot guarantee that the map is error free and therefore accepts no liability for consequential or indirect damages arising from its use.





# Presence of mines or UXOs

Western Bahr el Ghazal\_Wau



### Legend

**Boma coverage**

- Not assessed
- Assessed

**Presence mines**

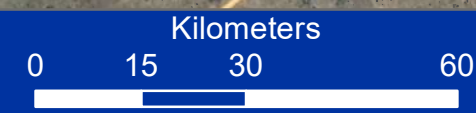
- Yes
- No

**Boma Name**

- Village
- Buildings
- State
- Roads
- County of interest

- County
- Waterways
- Marshland
- Waterbodies

Data Source: IOM/DTM, NBS, OCHA, Maxar, OSM  
Year: 2019  
Comments & feedback: [southsudandtm@iom.int](mailto:southsudandtm@iom.int)



The boundaries on the map do not imply official endorsement or acceptance by the Government of the Republic of South Sudan or by IOM. The map is for planning purposes only. IOM cannot guarantee that the map is error free and therefore accepts no liability for consequential or indirect damages arising from its use.