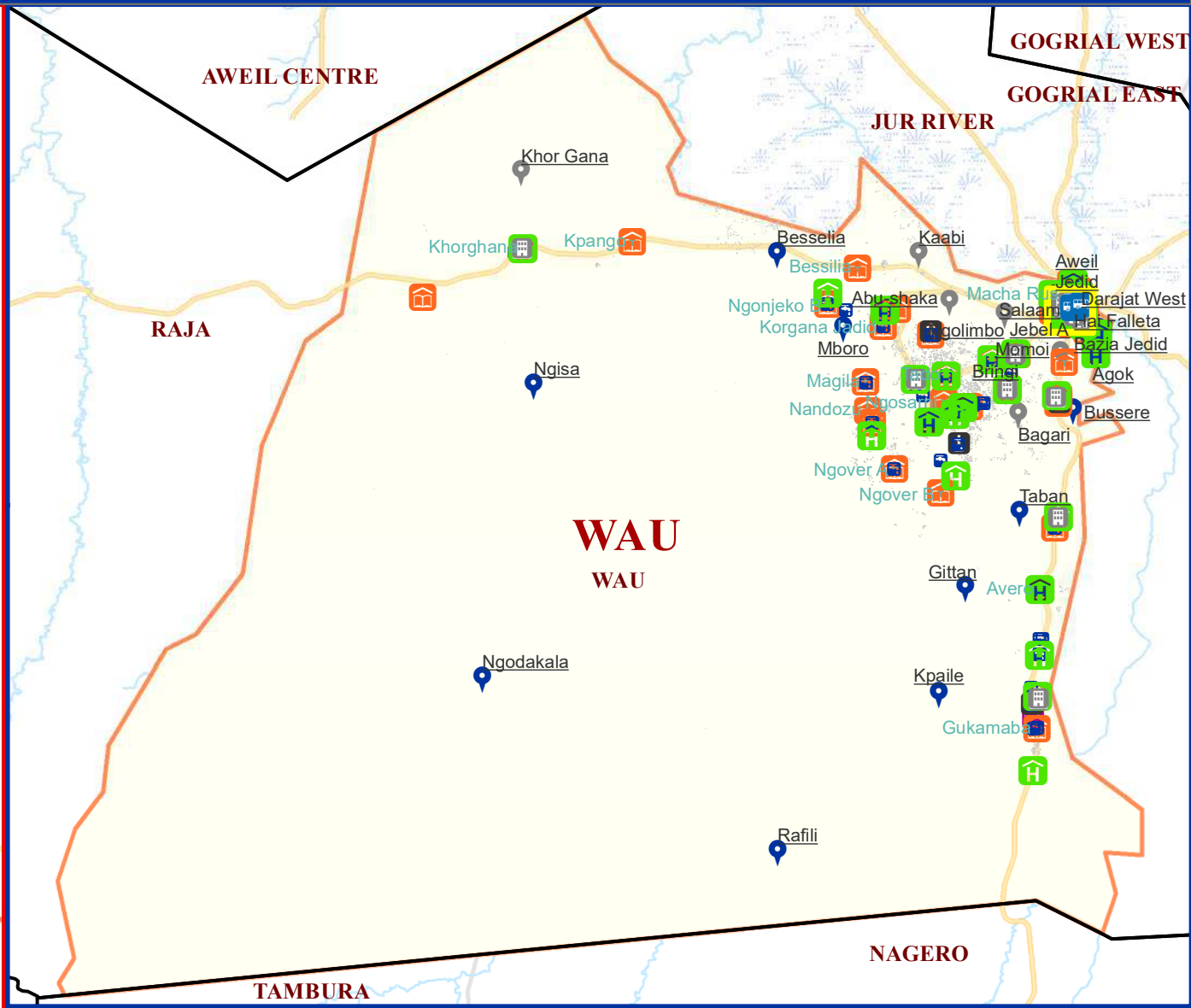
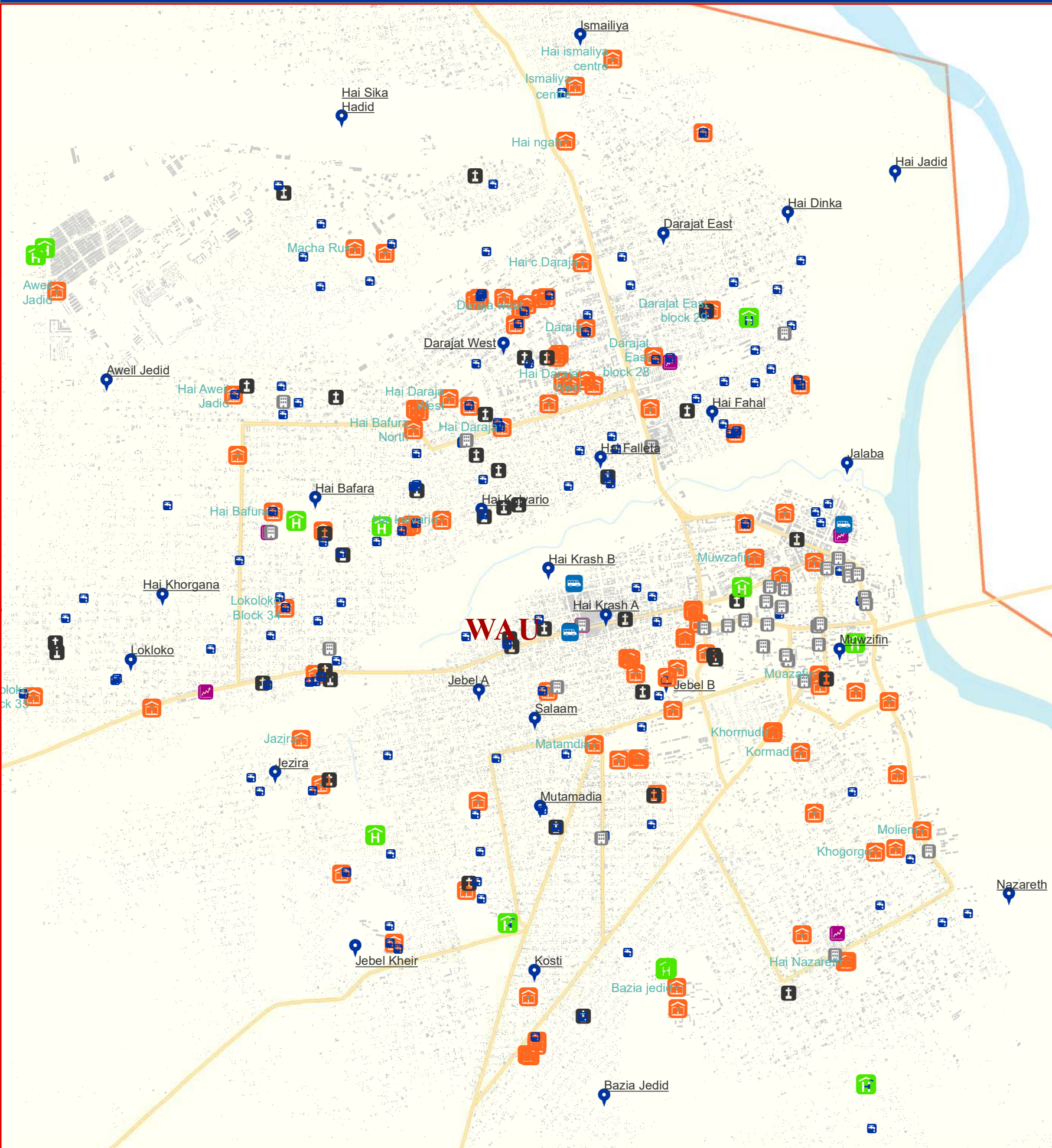


# Facilities mapped

# Western Bahr el Ghazal\_Wau



## Legend

### Type of facilities

- Administrative
- Education
- Market
- Healthcare
- Religious building
- Transport
- Water point

### Boma coverage

- Assessed
- Not Assessed
- Boma Name
- Village

- State Admin 1 State
- County Admin 2 County
- County of interest Admin 2 County
- Buildings
- Roads Roads
- Waterways
- Marshland
- Waterbodies

Data Source: IOM/DTM, NBS, OCHA, Maxar, OSM

Year: 2019

Comments & feedback: southsudandtm@iom.int

0 5 10 20 30 40 Kilometers

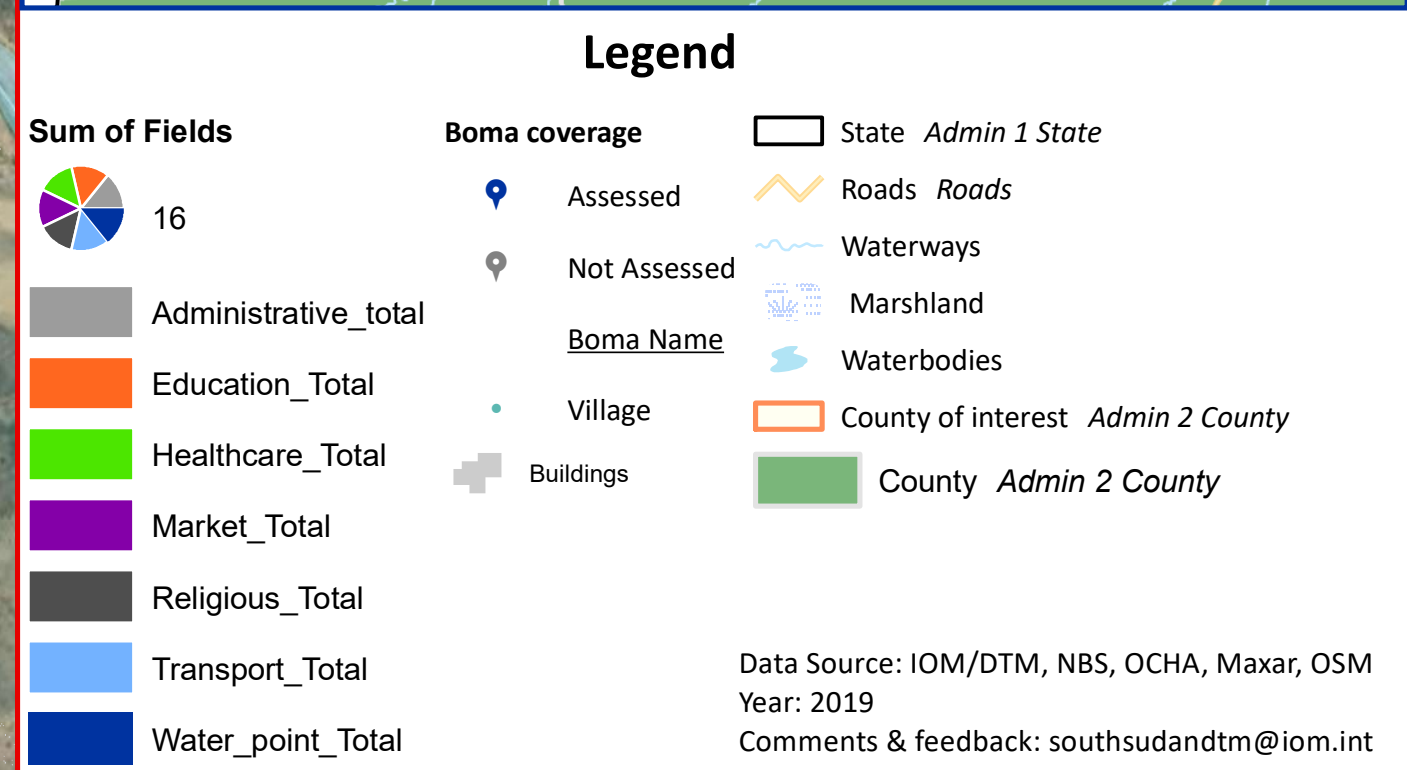
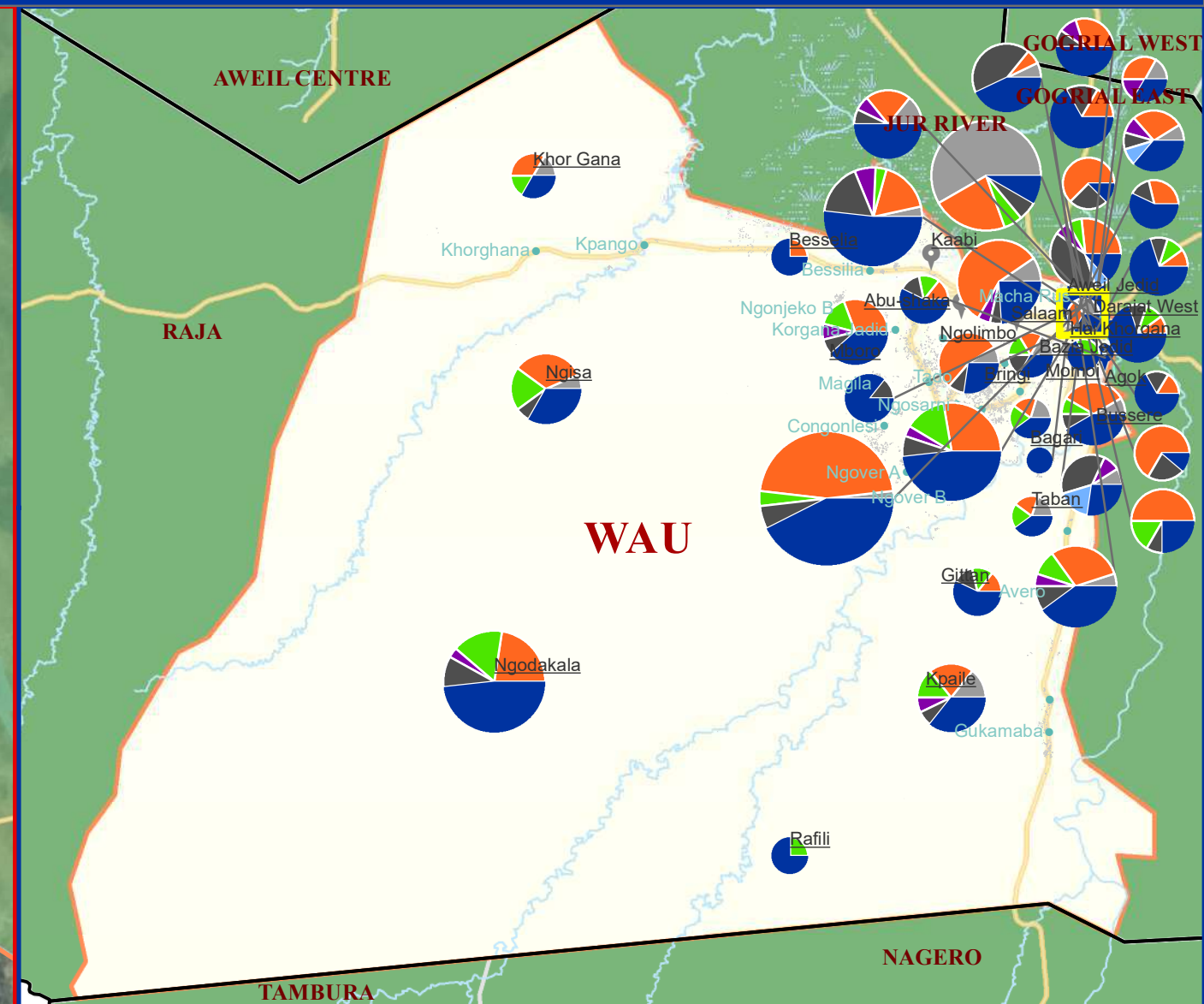
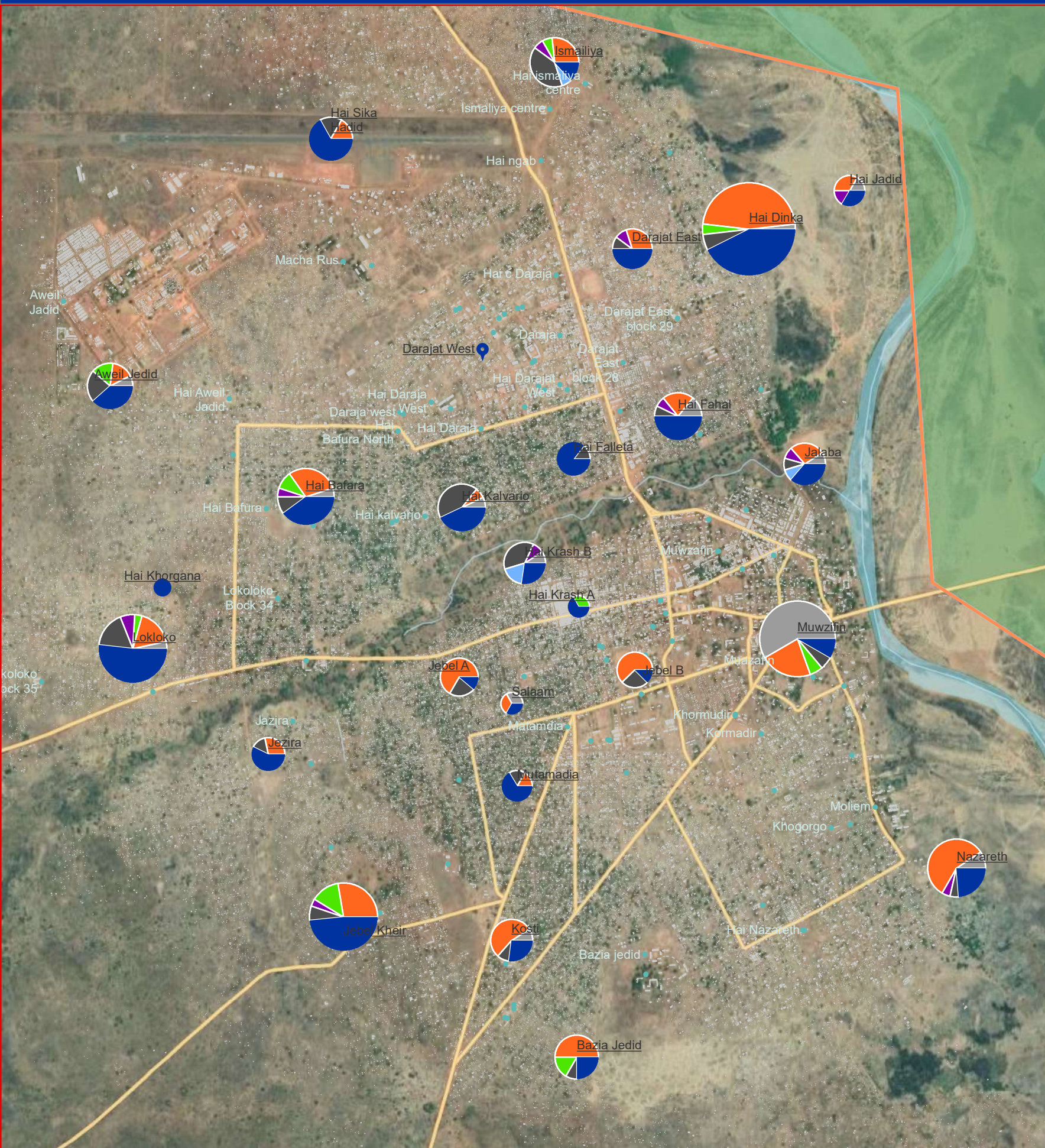
The boundaries on the map do not imply official endorsement or acceptance by the Government of the Republic of South Sudan or by IOM. The map is for planning purposes only. IOM cannot guarantee that the map is error free and therefore accepts no liability for consequential or indirect damages arising from its use.





# Facilities by boma

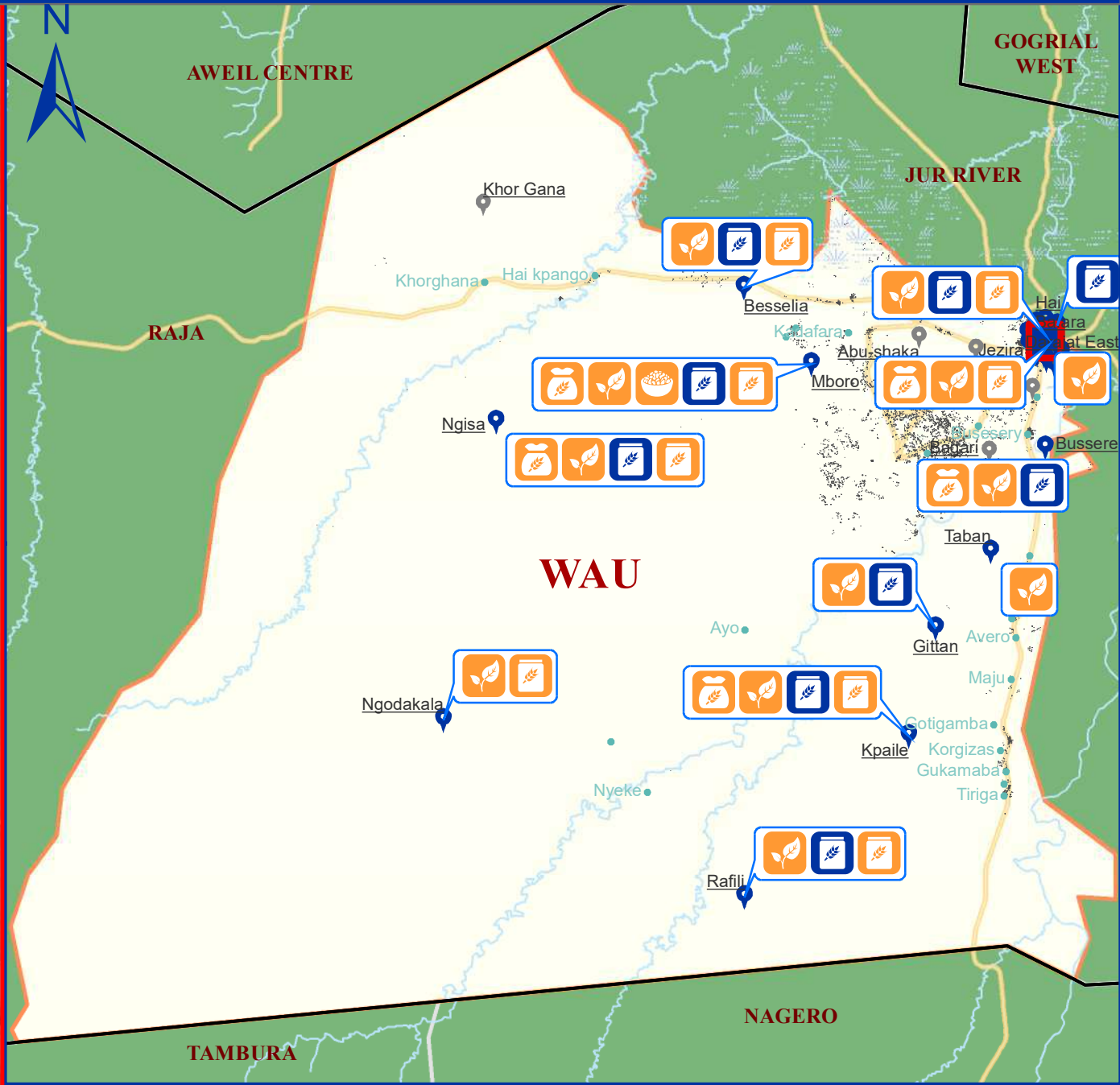
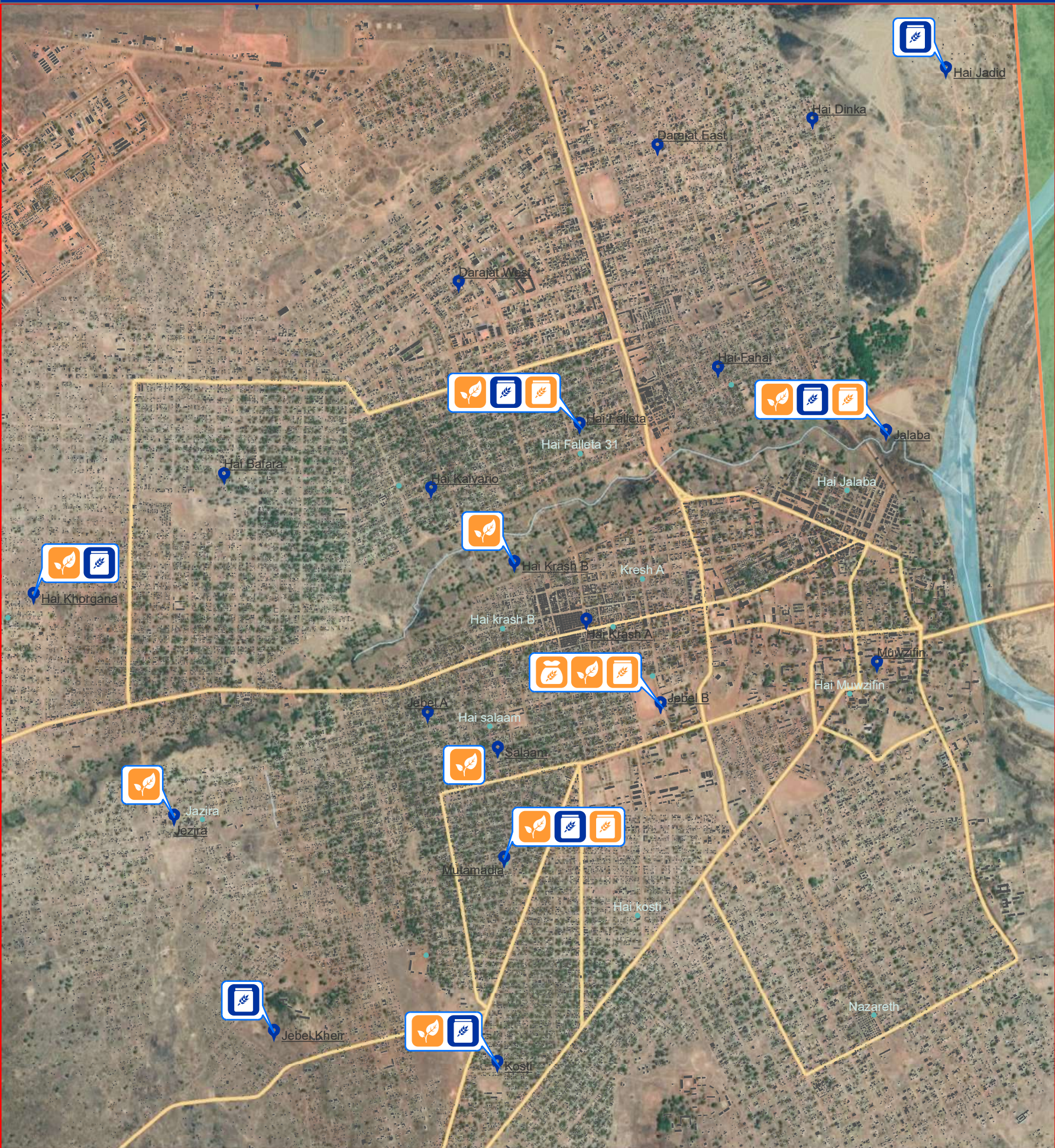
## Western Bahr el Ghazal\_Wau





# Major Food Crops Grown

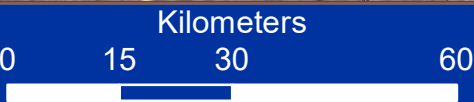
Western Bahr el Ghazal\_Wau



**Legend**

<b>Boma Coverage</b>	State	Roads	<b>Food Crops</b>
Assessed	County	Waterways	Finger Millet
Not assessed	County of interest	Waterbodies	Sorghum
<b>Boma Name</b>	Buildings		Groundnuts
Village	Marshland		Rice

Data Source: IOM/DTM, NBS, OCHA, Maxar, OSM  
Year: 2019  
Comments & feedback: [southsudandtm@iom.int](mailto:southsudandtm@iom.int)

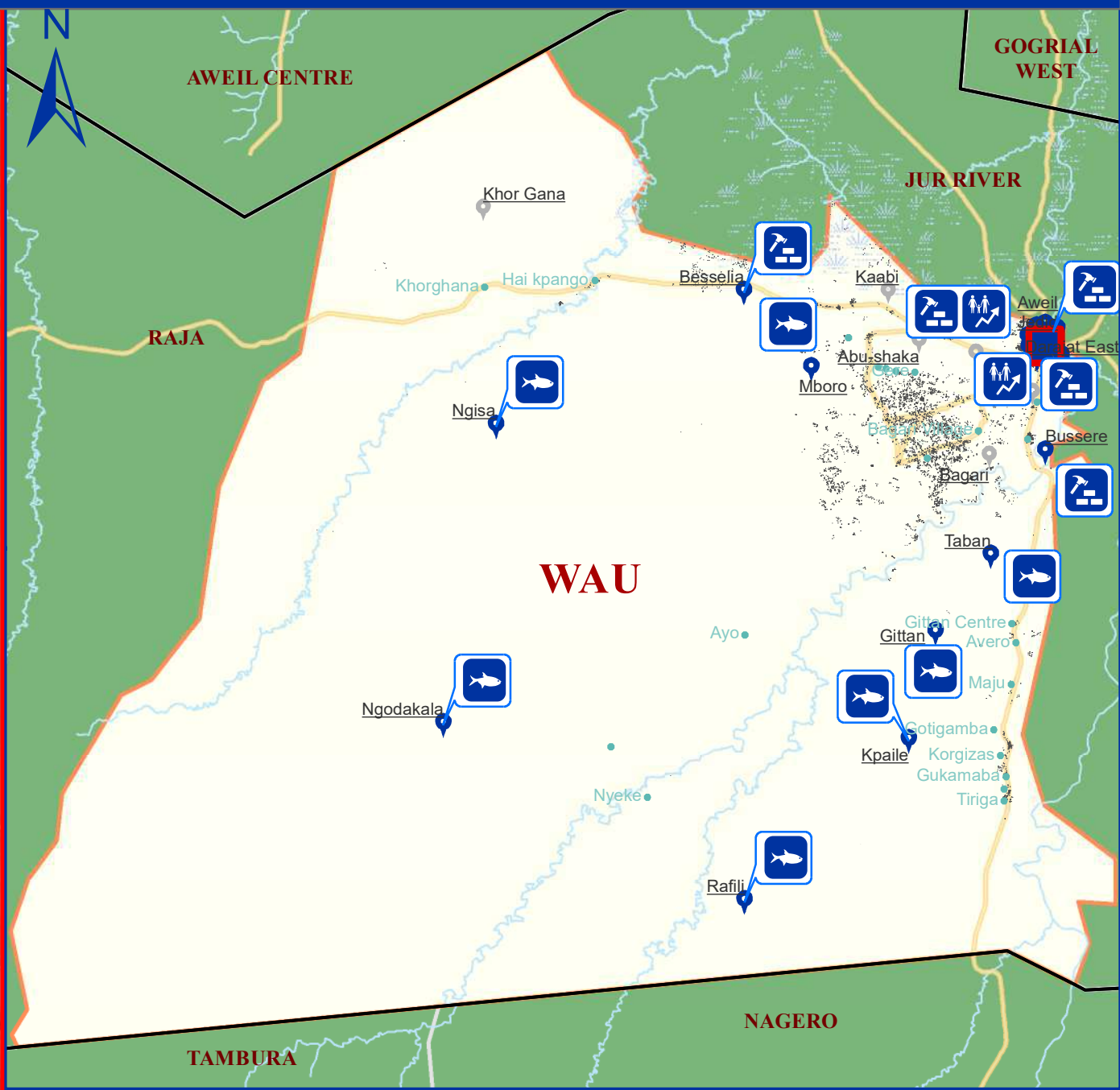
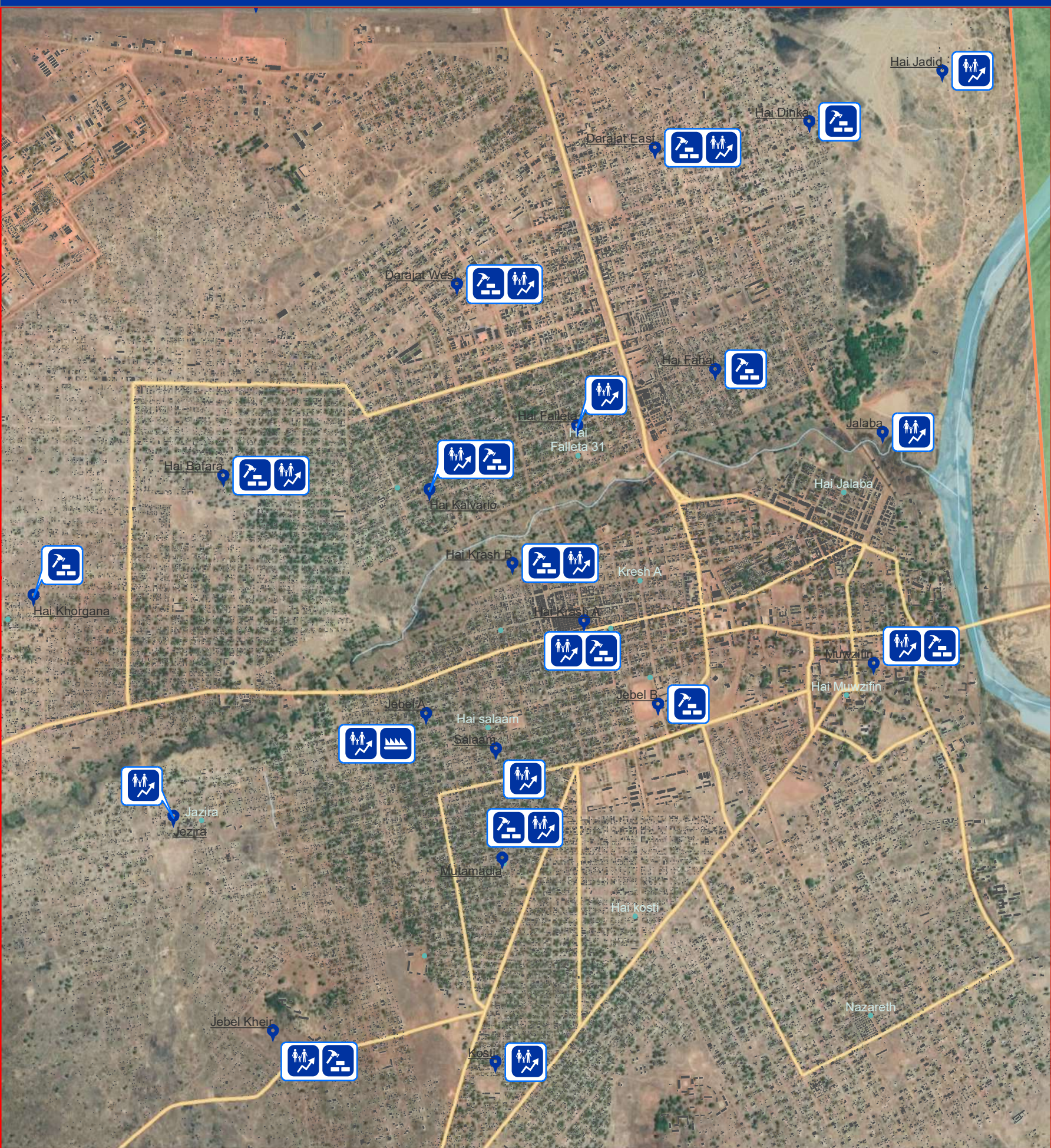


The boundaries on the map do not imply official endorsement or acceptance by the Government of the Republic of South Sudan or by IOM. The map is for planning purposes only. IOM cannot guarantee that the map is error free and therefore accepts no liability for consequential or indirect damages arising from its use.



# Major Livelihood Practices

Western Bahr el Ghazal\_Wau



**Boma Coverage**

- Assessed
- Not Assessed
- Boma Name
- Village

**Legend**

- State
- County
- County of interest
- Buildings
- Marshland

**Roads**

- Roads
- Waterways
- Waterbodies

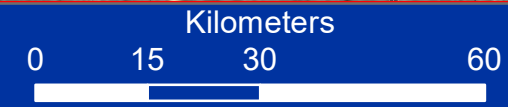
**Livelihood shocks**

- Drought
- Floods
- Livestock diseases
- Human epidemic
- Crop diseases
- Pests
- Conflict

Data Source: IOM/DTM, NBS, OCHA, Maxar, OSM

Year: 2019

Comments & feedback: southsudandtm@iom.int

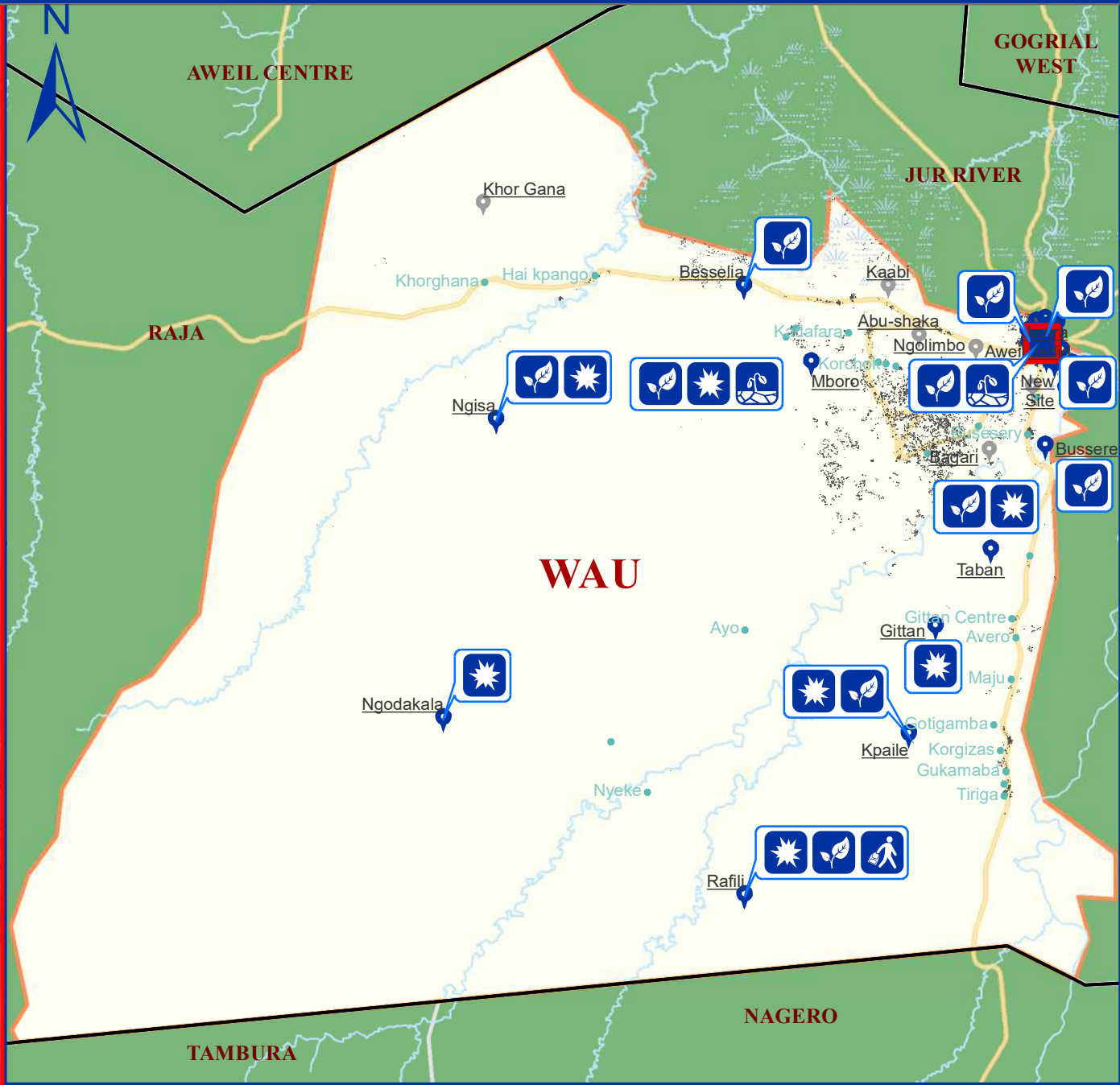
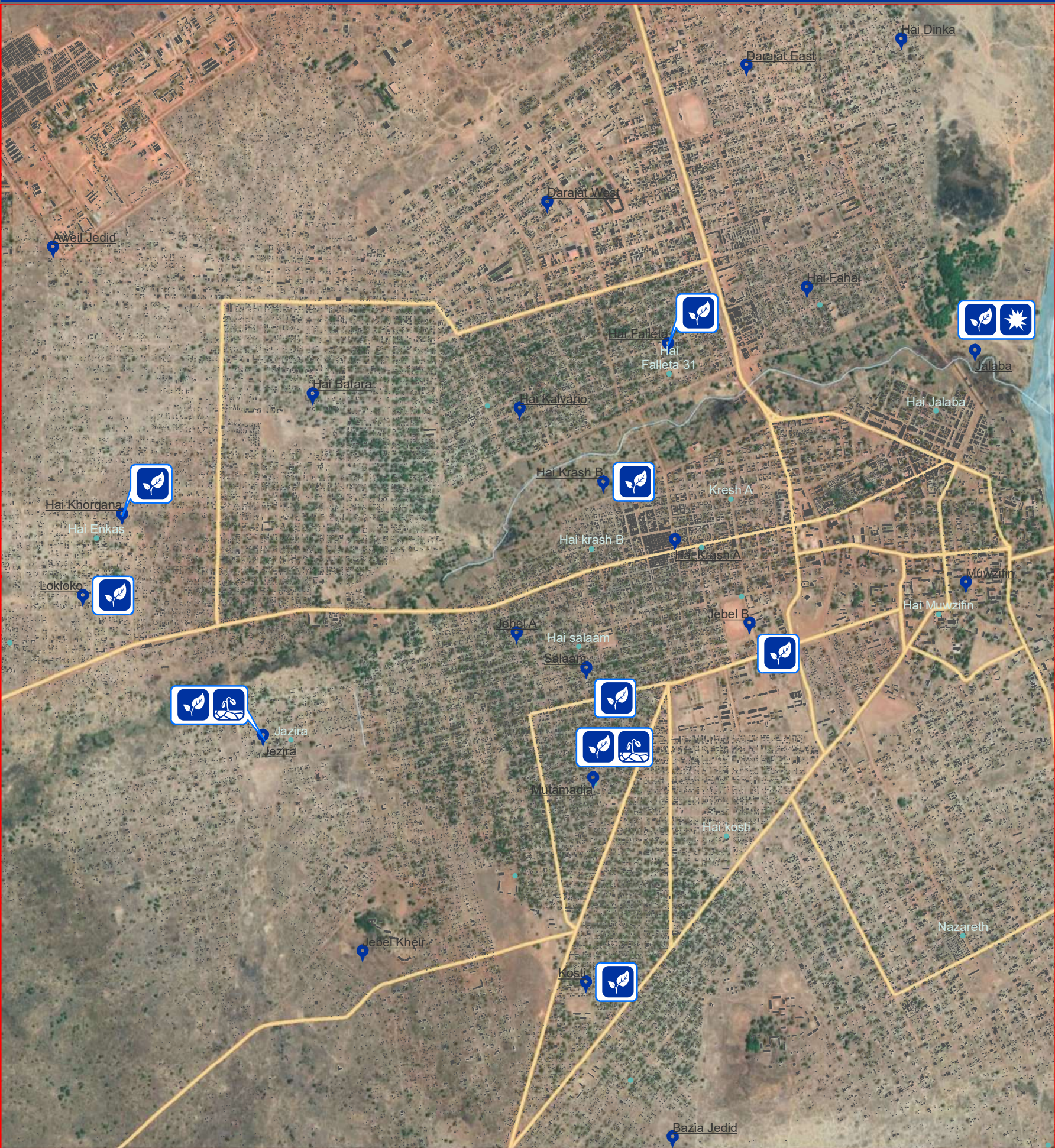


The boundaries on the map do not imply official endorsement or acceptance by the Government of the Republic of South Sudan or by IOM. The map is for planning purposes only. IOM cannot guarantee that the map is error free and therefore accepts no liability for consequential or indirect damages arising from its use.



# Problems Affecting Farming

Western Bahr el Ghazal\_Wau



**Boma Coverage**

Assessed

Not assessed

**Boma Name**

Village

State

County

County of interest

Buildings

Marshland

Roads

Waterways

Waterbodies

**Legend**

**Farming Problems**

Crop Disease

Conflict

Natural Disaster

Market Accessibility

Other Crop Damage

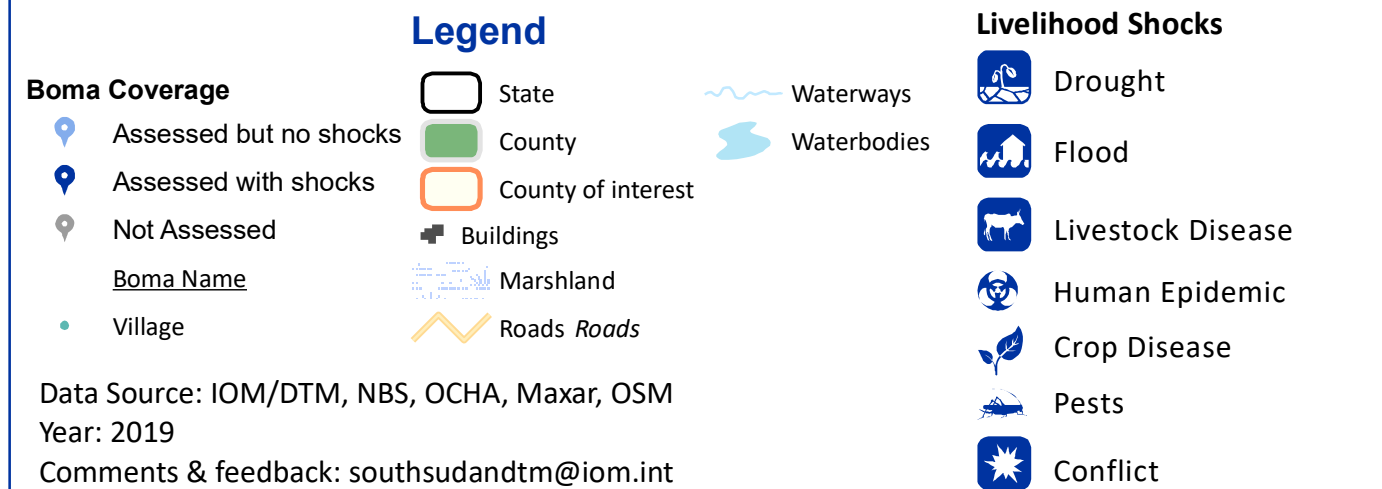
Data Source: IOM/DTM, NBS, OCHA, Maxar, OSM

Year: 2019

Comments & feedback: [southsudandtm@iom.int](mailto:southsudandtm@iom.int)

The boundaries on the map do not imply official endorsement or acceptance by the Government of the Republic of South Sudan or by IOM. The map is for planning purposes only. IOM cannot guarantee that the map is error free and therefore accepts no liability for consequential or indirect damages arising from its use.





The boundaries on the map do not imply official endorsement or acceptance by the Government of the Republic of South Sudan or by IOM. The map is for planning purposes only. IOM cannot guarantee that the map is error free and therefore accepts no liability for consequential or indirect damages arising from its use.