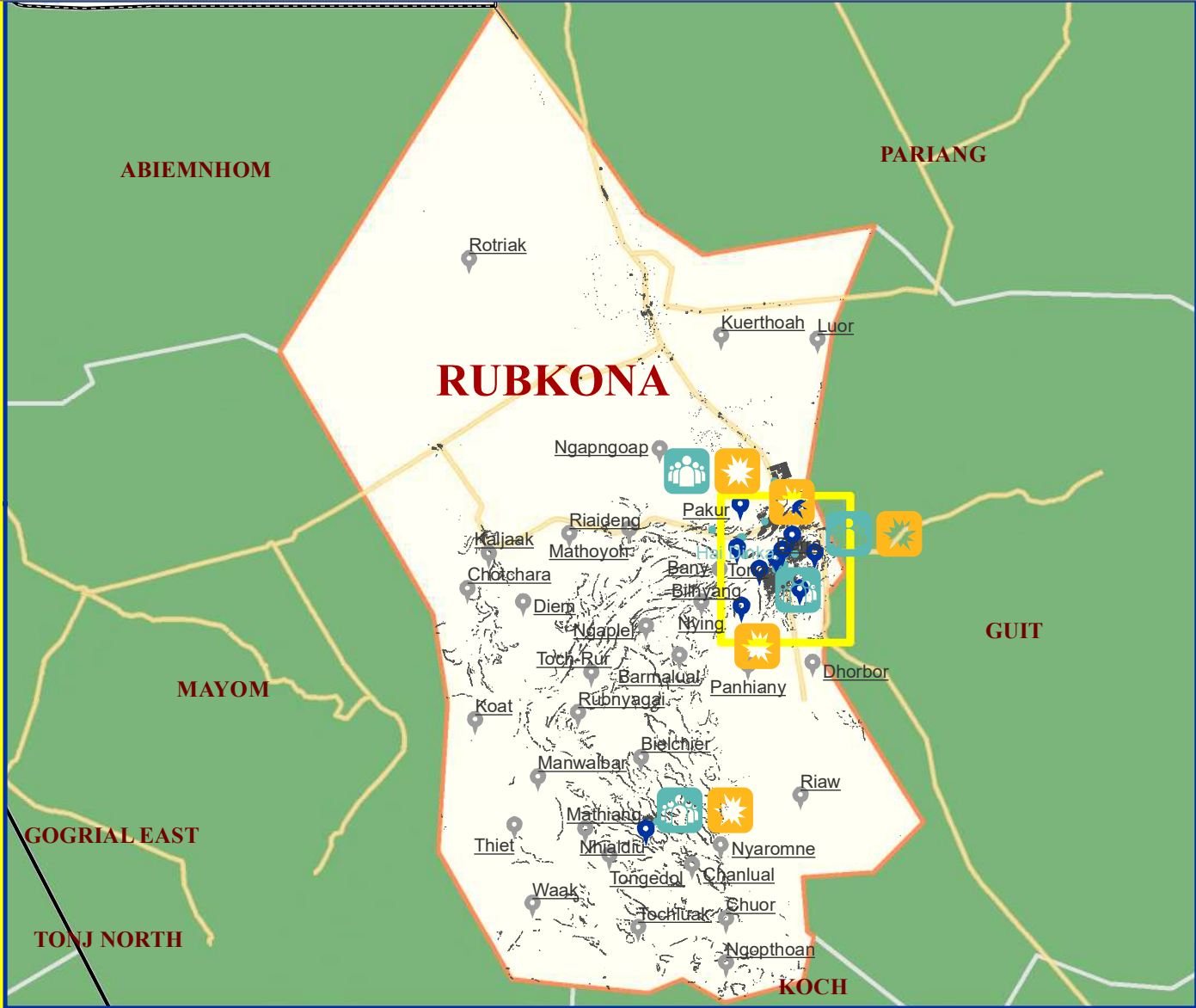
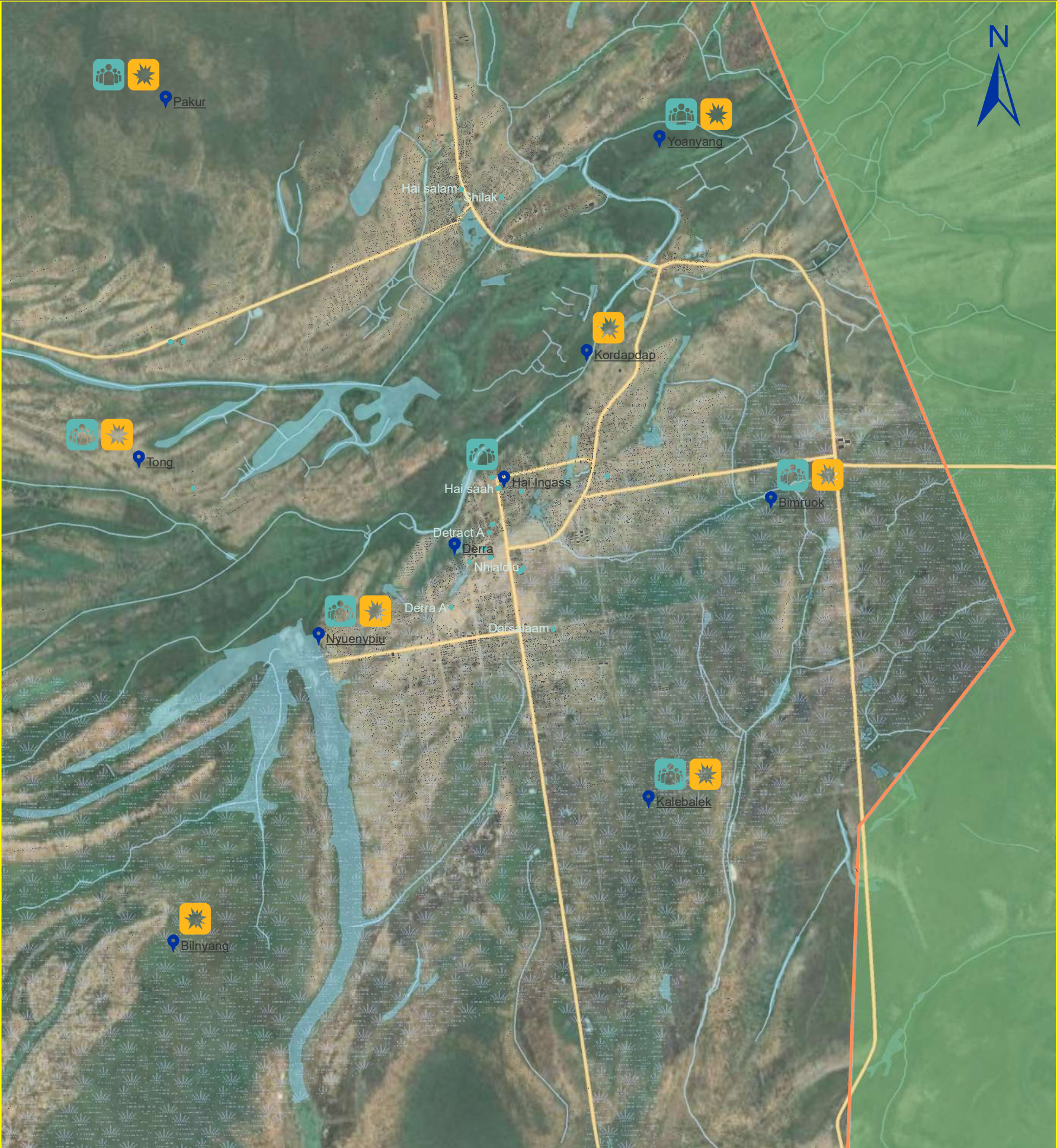


Water managment and related conflict

Unity_Rubkona



Legend

Boma Coverage

- Assessed
- Not Assessed
- Boma Name
- Village
- Buildings
- State

Roads Roads

County of interest

County

Waterways

Marshland

Waterbodies

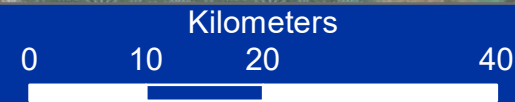
Water managment and related conflict

- Conflict water in communities
- Water user committee
- Water sources used as at a fee

Data Source: IOM/DTM, NBS, OCHA, Maxar, OSM

Year: 2019

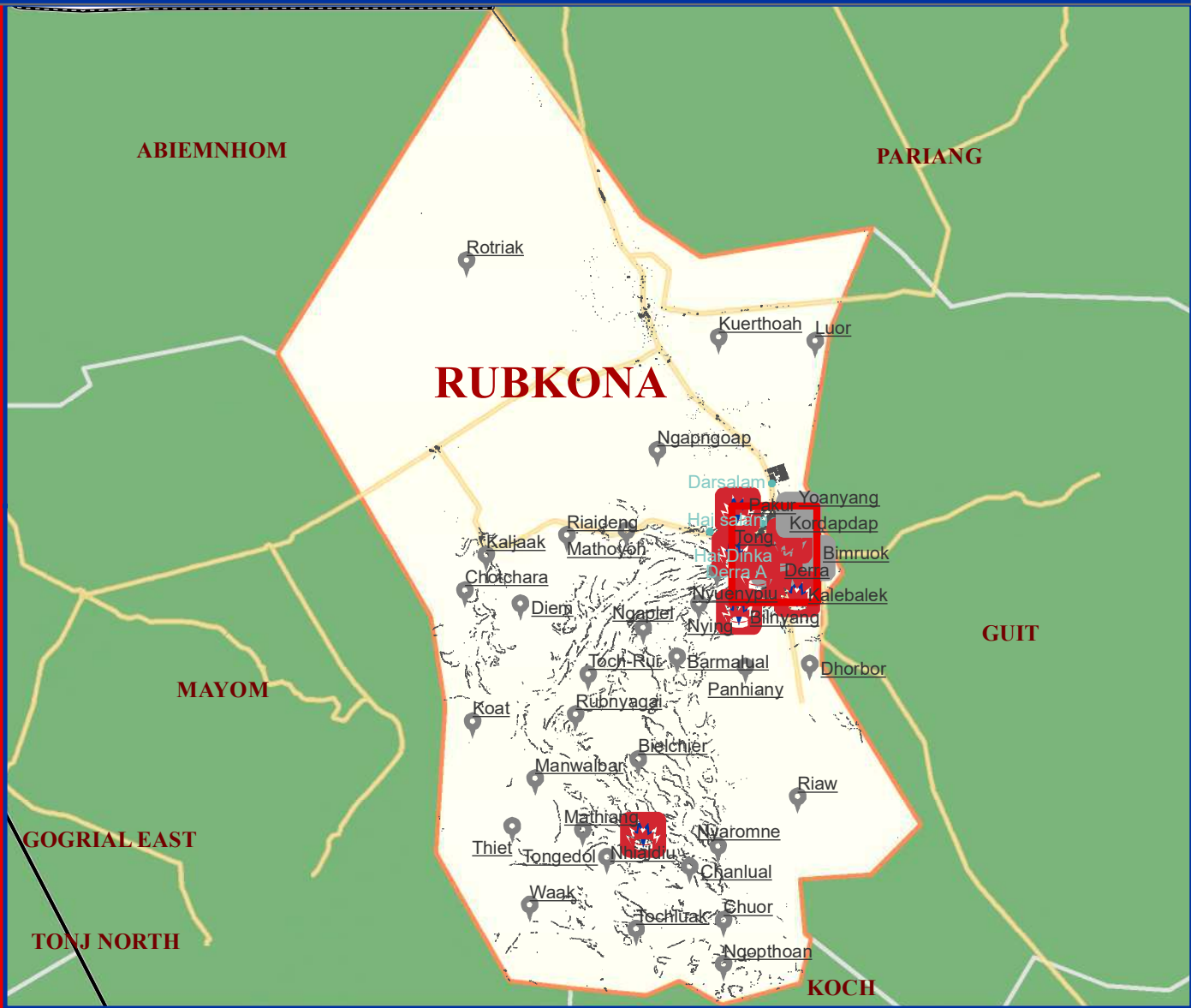
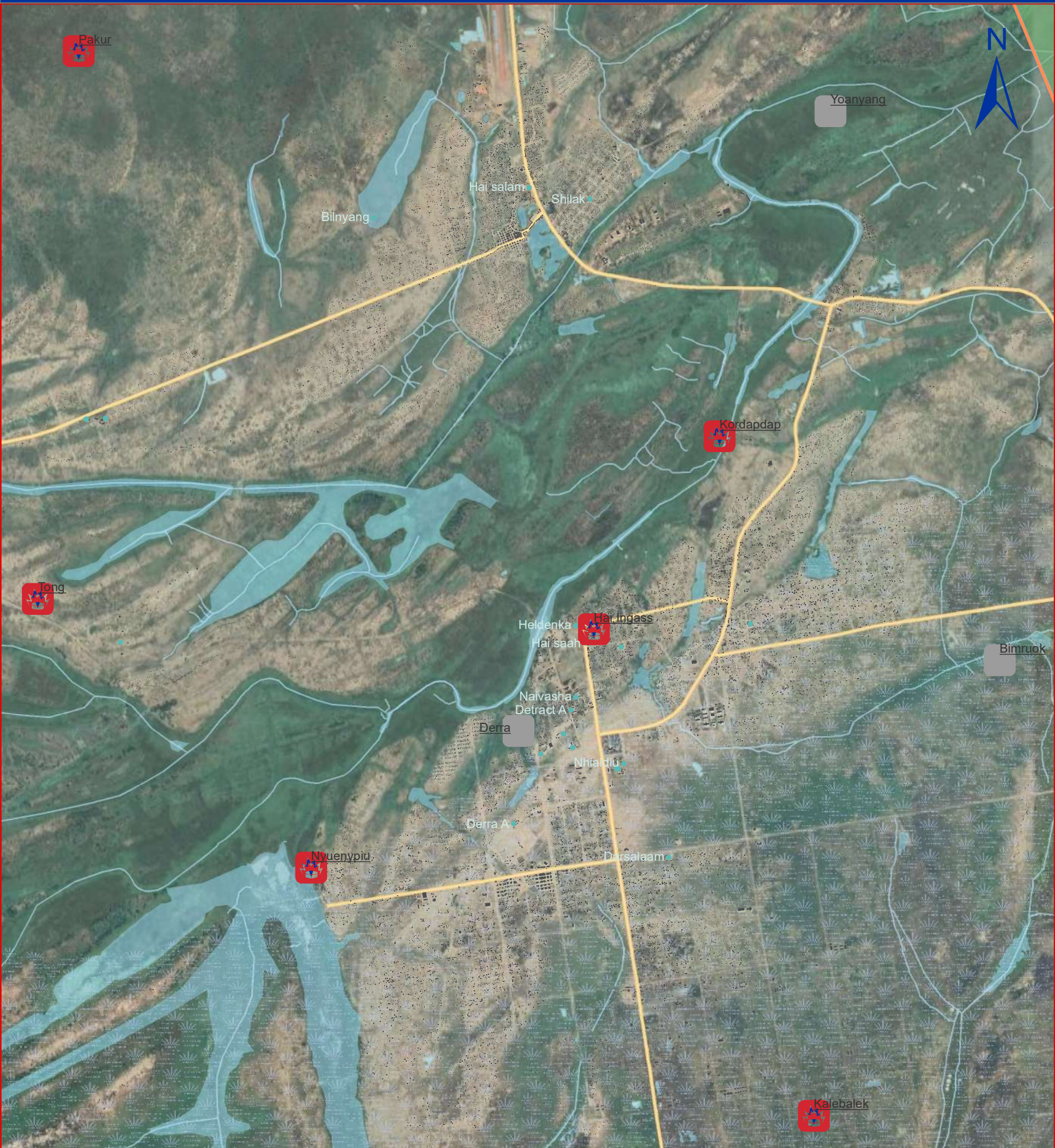
Comments & feedback: southsudandtm@iom.int



The boundaries on the map do not imply official endorsement or acceptance by the Government of the Republic of South Sudan or by IOM. The map is for planning purposes only. IOM cannot guarantee that the map is error free and therefore accepts no liability for consequential or indirect damages arising from its use.

Presence of mines or UXOs

Unity_Rubkona



Legend

- Boma coverage**

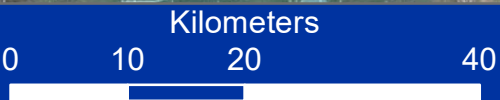
 - Not assessed
 - Assessed
- Presence mines**

 - Yes
 - No
- Boma Name**

 - Village
 - Buildings
 - State
 - Roads
 - County of interest
- County**

 - County
 - Waterways
 - Marshland
 - Waterbodies

Data Source: IOM/DTM, NBS, OCHA, Maxar, OSM
Year: 2019
Comments & feedback: southsudandtm@iom.int



The boundaries on the map do not imply official endorsement or acceptance by the Government of the Republic of South Sudan or by IOM. The map is for planning purposes only. IOM cannot guarantee that the map is error free and therefore accepts no liability for consequential or indirect damages arising from its use.