



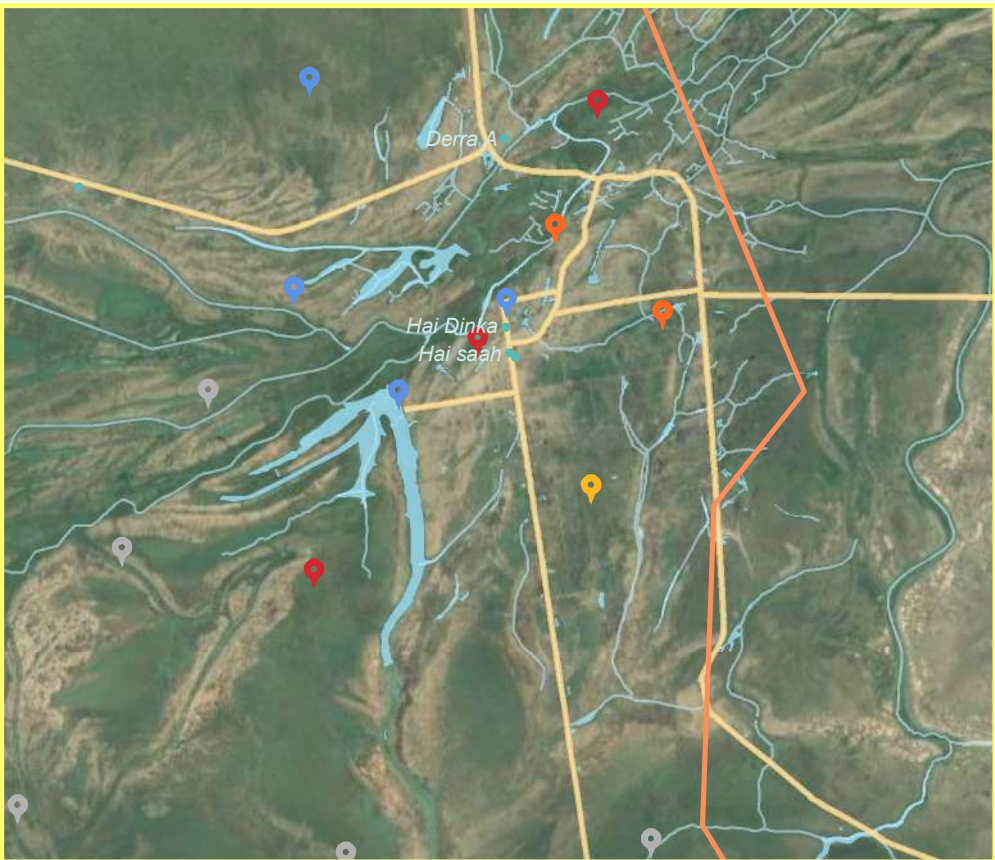
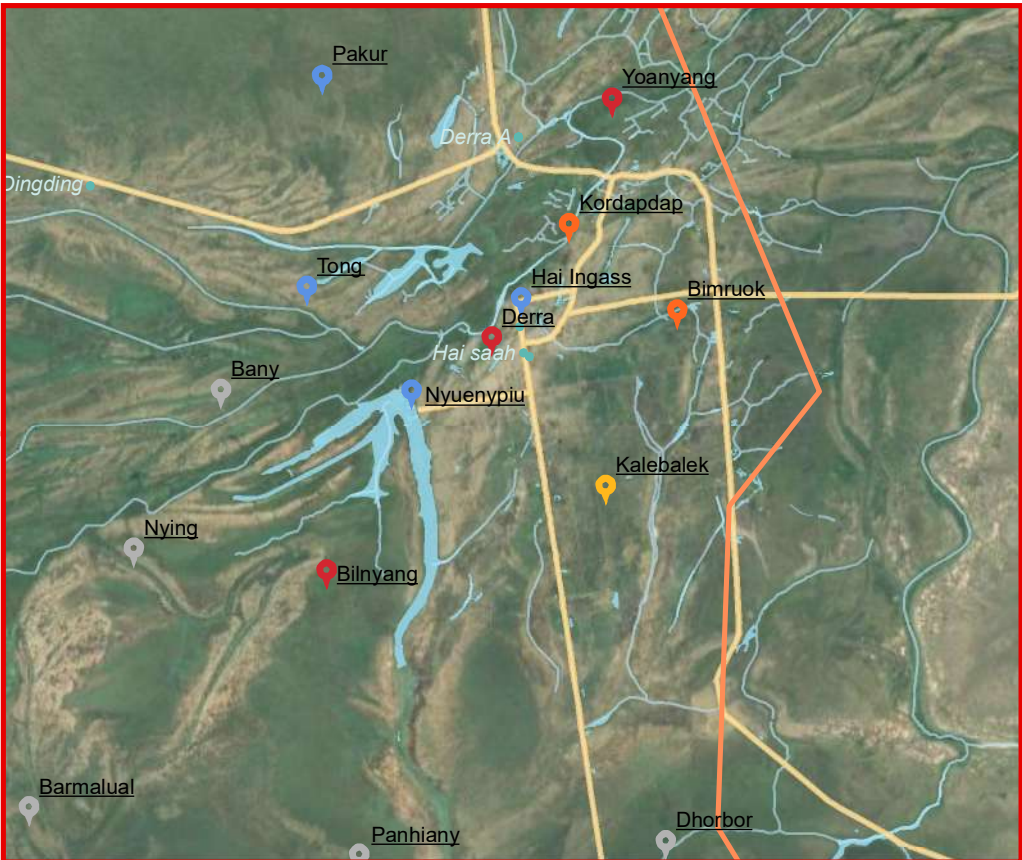
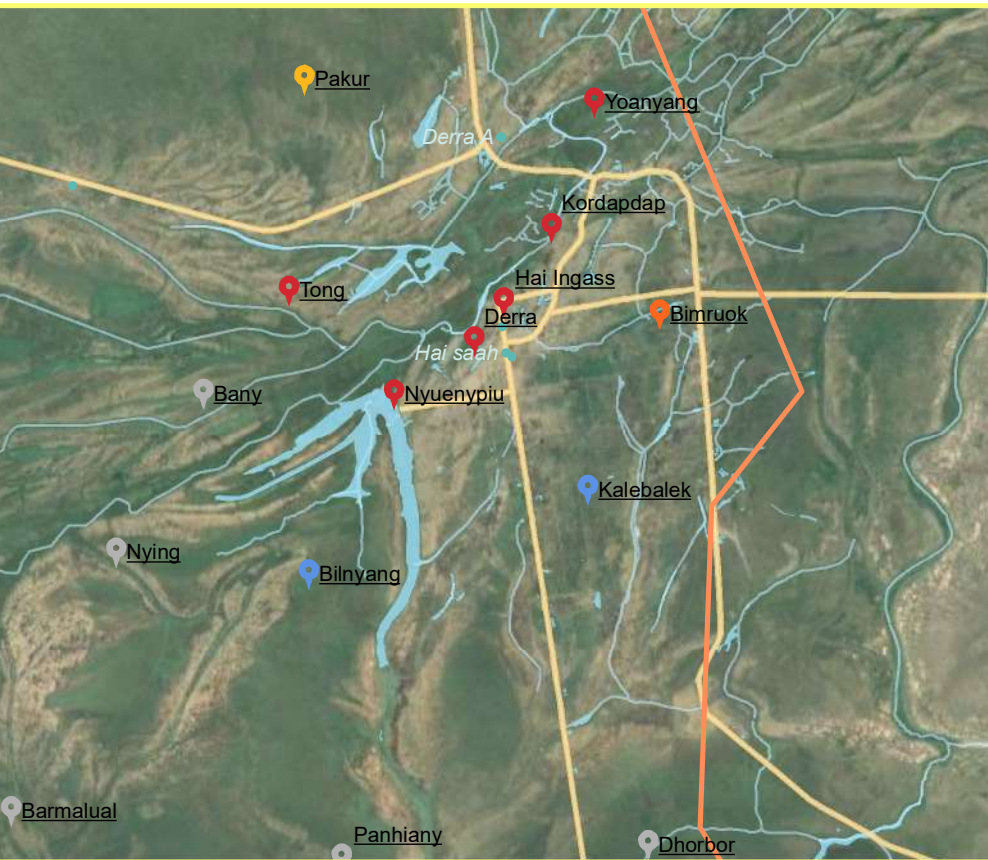
Food Security



Water Services



Conflict Mitigation Services



Legend

Barriers to Access services

- Not Assessed
- Distance

- Insecurity
- Lack of resources
- Lack of services

- Village
- State
- County
- County of interest
- Roads
- Waterways

- Waterbodies

The boundaries on the map do not imply official endorsement or acceptance by the Government of the Republic of South Sudan or by IOM. The map is for planning purposes only. IOM cannot guarantee that the map is error free and therefore accepts no liability for consequential or indirect damages arising from its use.

Data Source: IOM/DTM, NBS, OCHA, Maxar, OSM
Year: 2019
Comments & feedback: southsudandtm@iom.int



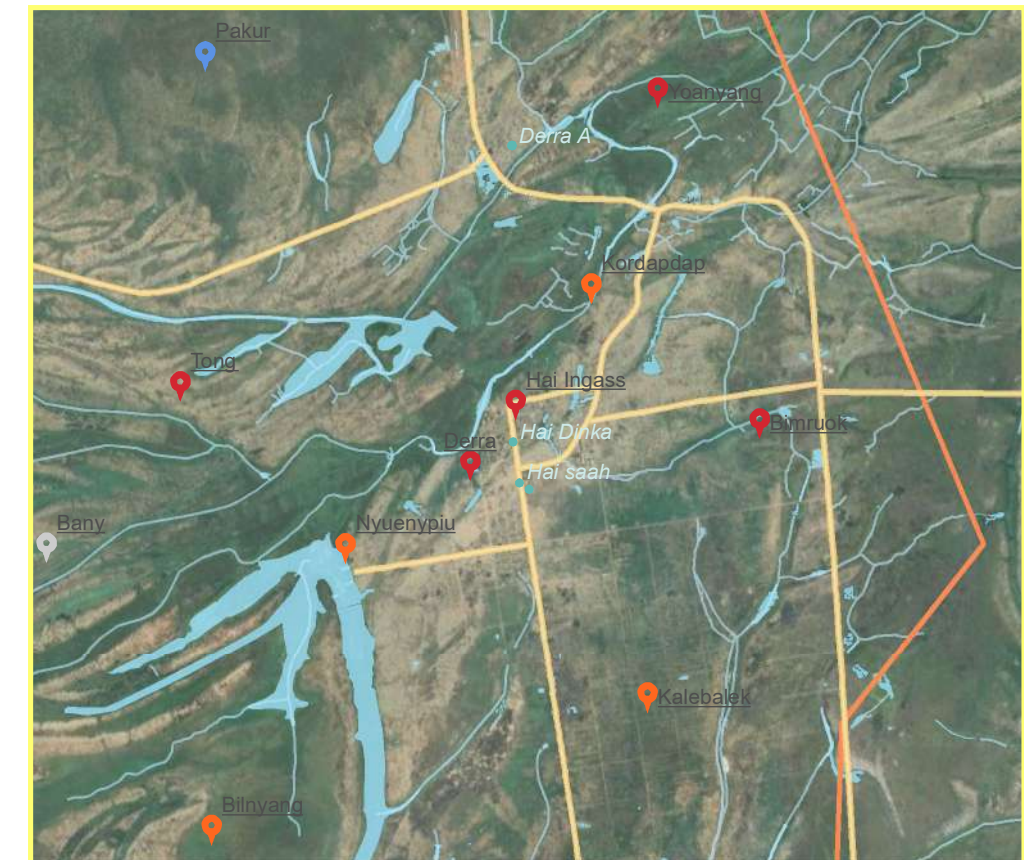
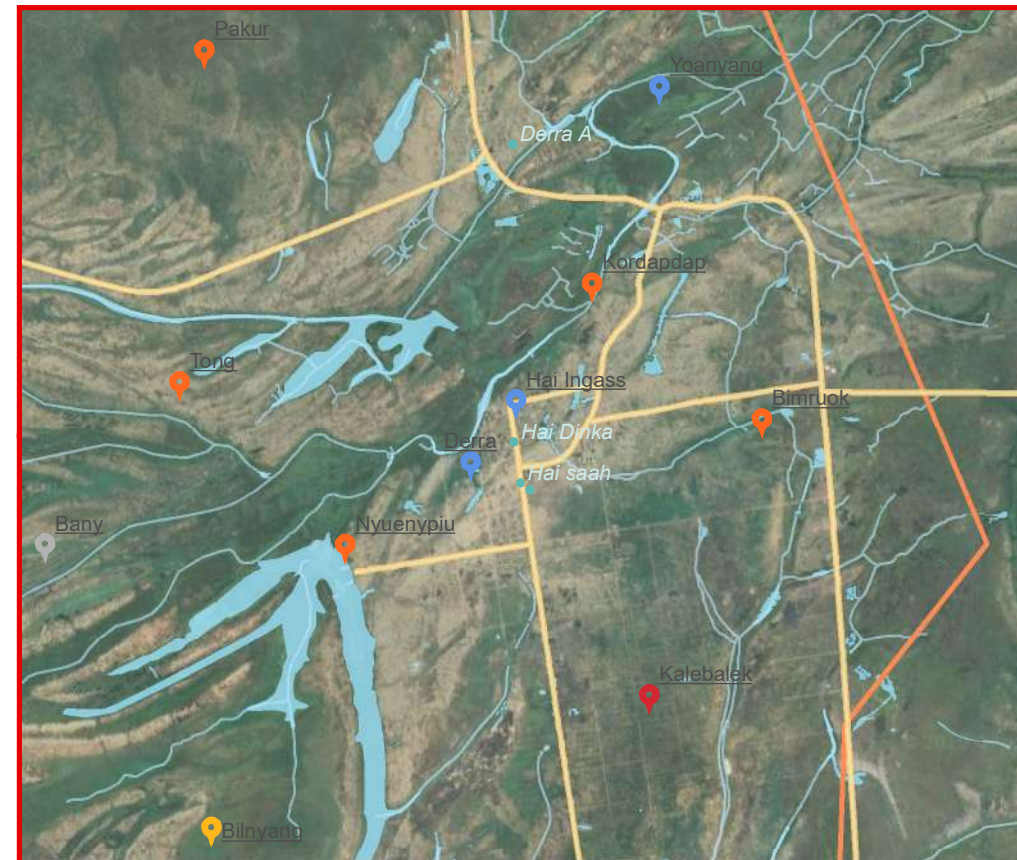
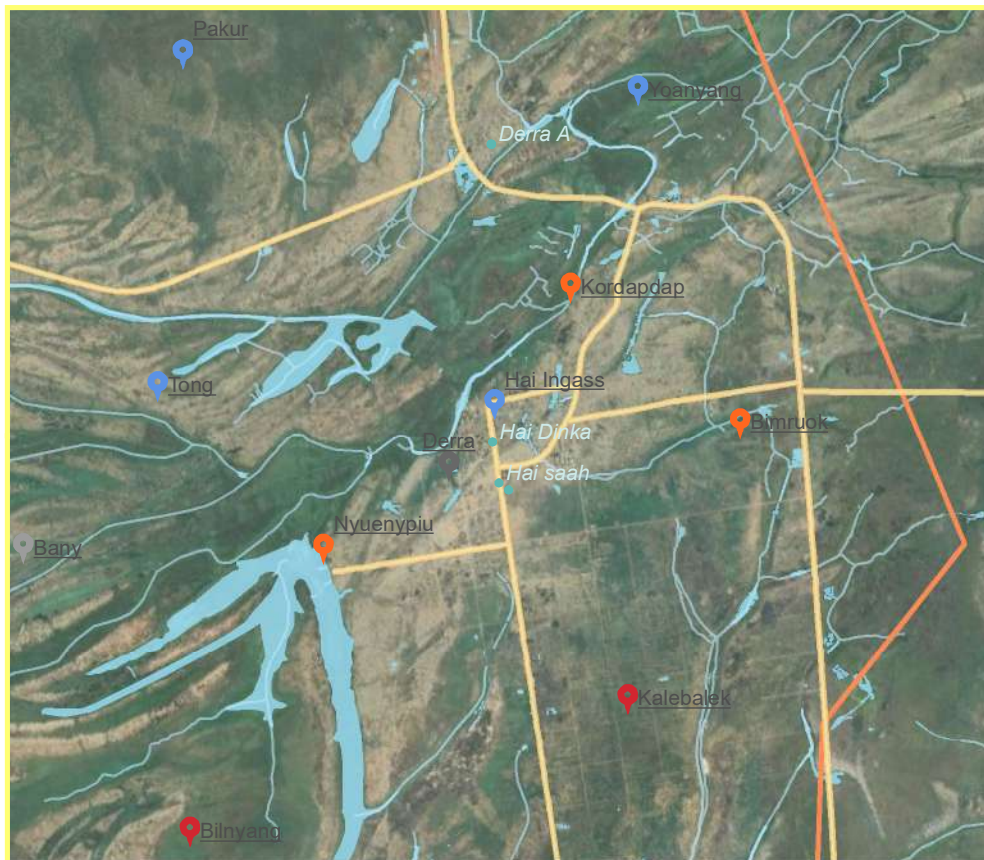
Health Services



Education Services



Protection Services



Legend

Barriers to Access services

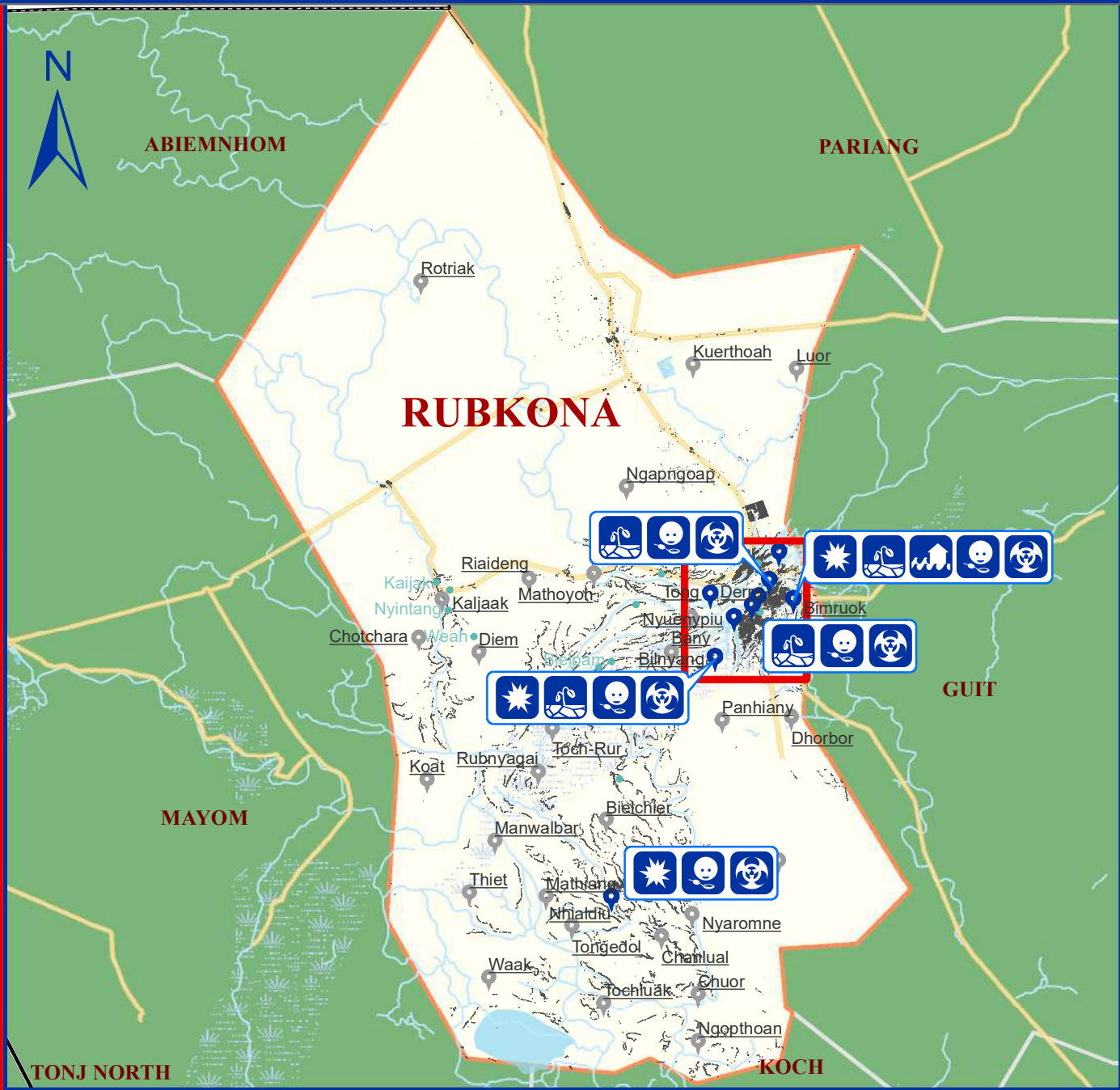
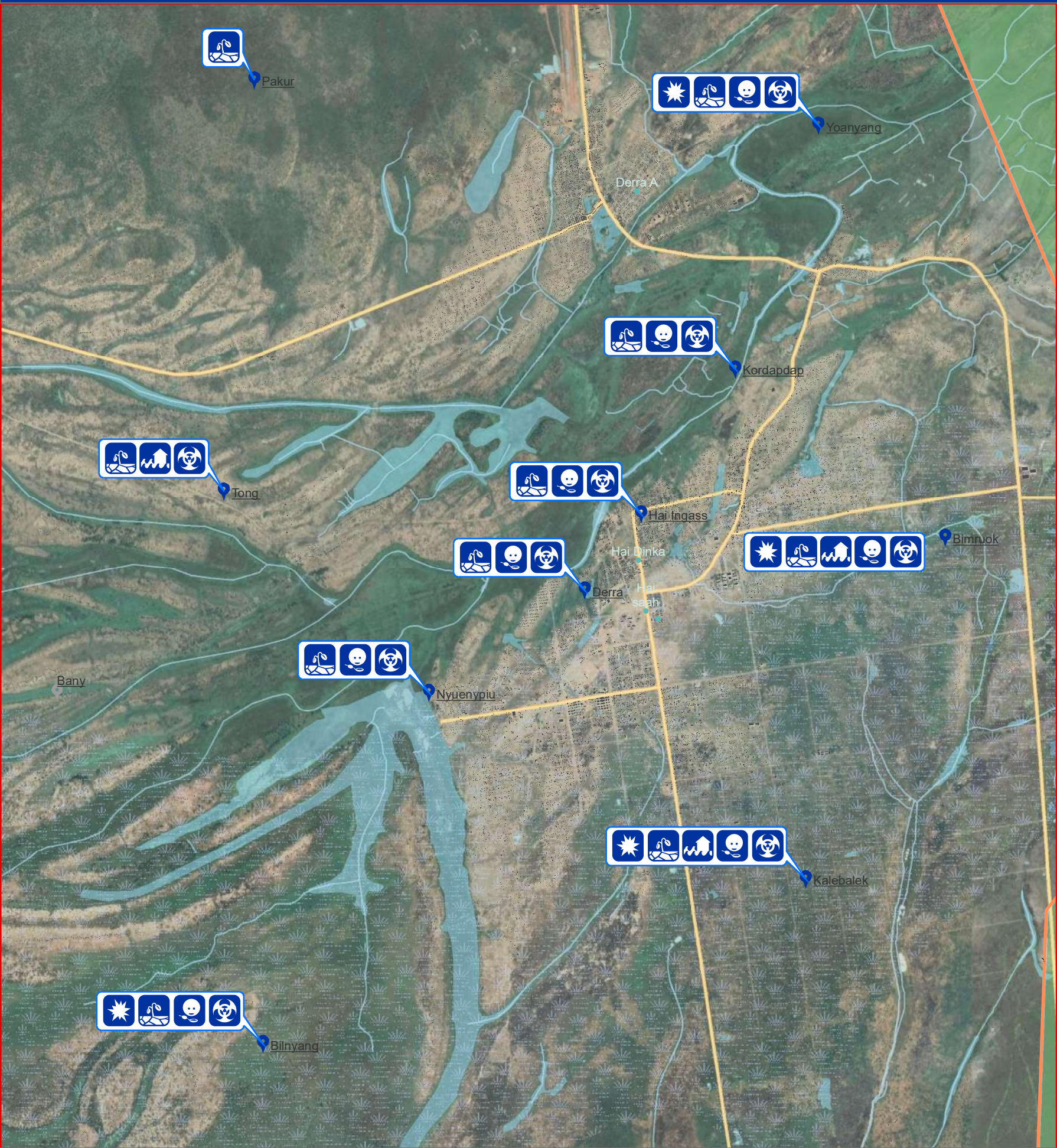
- | | | | | |
|--------------|-------------------|---------|-------------|--------------------|
| Not Assessed | Insecurity | Other | State | County of interest |
| Distance | Lack of resources | Village | Waterways | County |
| | Lack of services | Roads | Waterbodies | |

The boundaries on the map do not imply official endorsement or acceptance by the Government of the Republic of South Sudan or by IOM. The map is for planning purposes only. IOM cannot guarantee that the map is error free and therefore accepts no liability for consequential or indirect damages arising from its use.

Data Source: IOM/DTM, NBS, OCHA, Maxar, OSM

Year: 2019

Comments & feedback: southsudandtm@iom.int



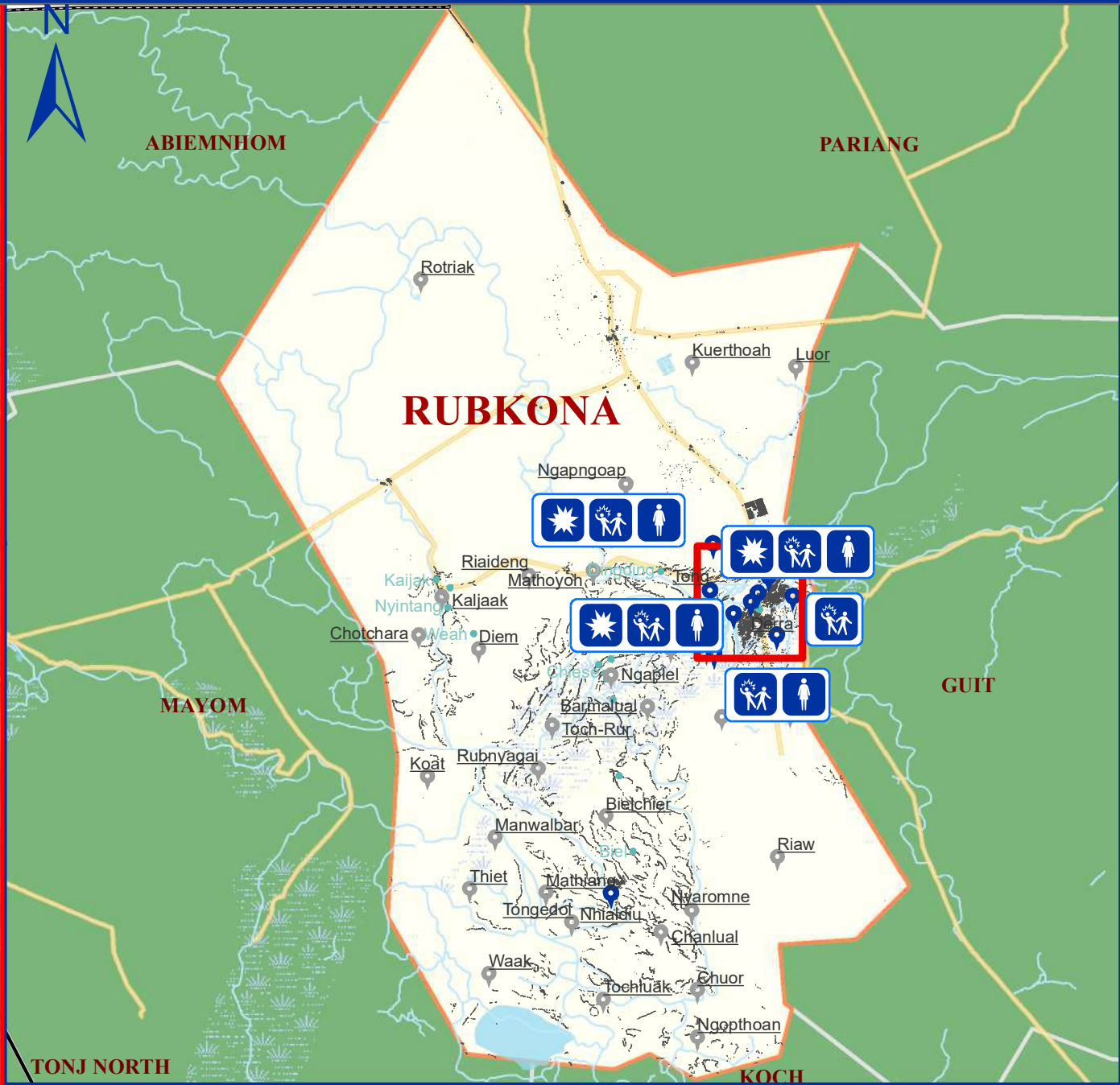
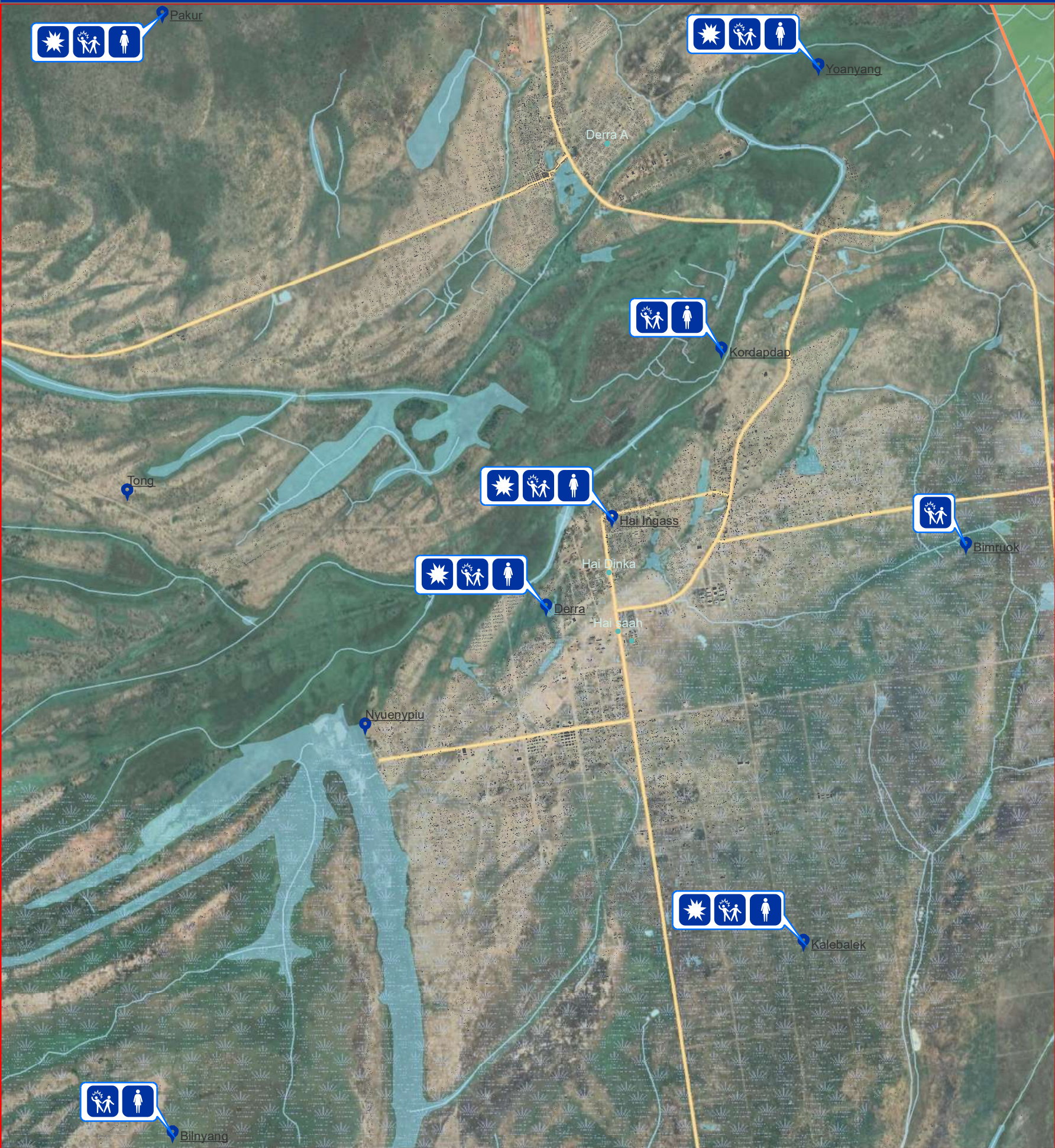
Legend

Boma Coverage	State	Waterbodies	External Threats
Assessed	County	Roads	Armed Conflict
Not Assessed	County of interest	Waterways	Drought
Boma Name	Buildings		Flood
Village	Marshland		Hunger
			Epidemics

Data Source: IOM/DTM, NBS, OCHA, Maxar, OSM
Year: 2019
Comments & feedback: southsudandtm@iom.int

Internal Threats, Violations and Risks

Unity_Rubkona



Boma Coverage

Assessed

Not assessed

Boma Name

Village

State

County

County of interest

Buildings

Marshland

Roads

Waterways

Waterbodies

Legend

Internal Threats

Local Conflict

Domestic Violence

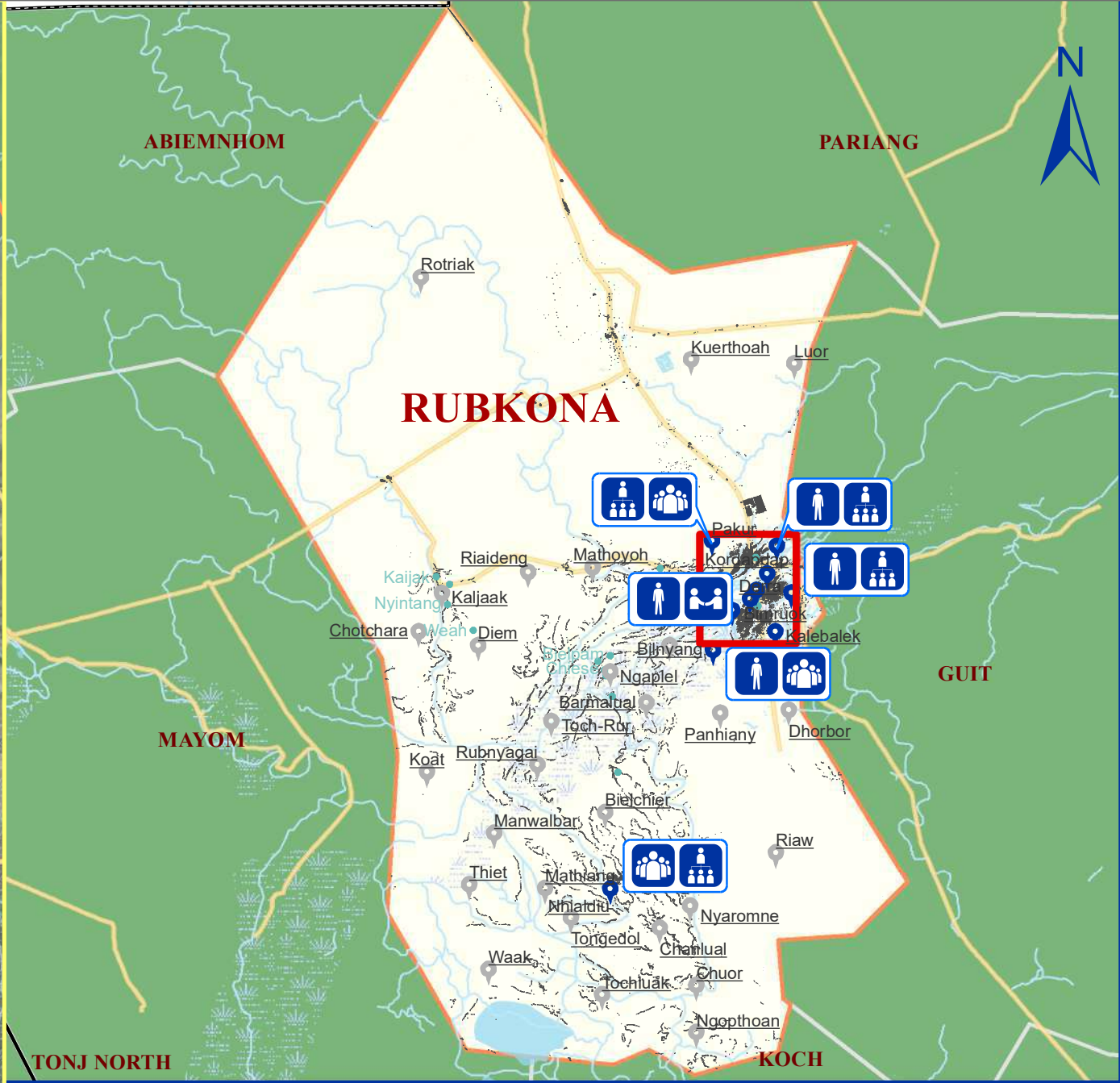
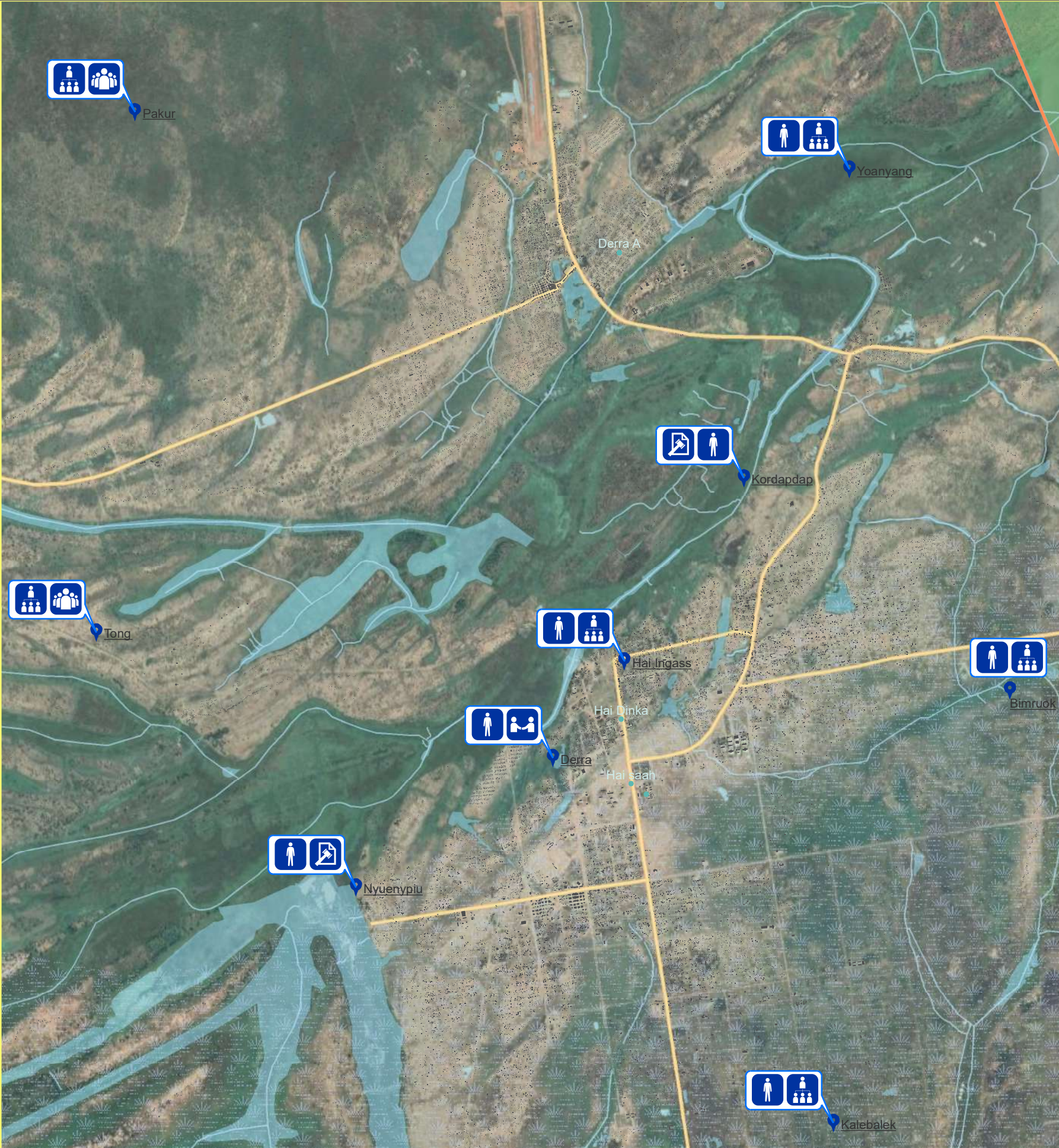
Gender Based Violence

Data Source: IOM/DTM, NBS, OCHA, Maxar, OSM

Year: 2019

Comments & feedback: southsudandtm@iom.int

The boundaries on the map do not imply official endorsement or acceptance by the Government of the Republic of South Sudan or by IOM. The map is for planning purposes only. IOM cannot guarantee that the map is error free and therefore accepts no liability for consequential or indirect damages arising from its use.



Legend

Boma Coverage

- Assessed
- Not assessed
- Boma Name
- Village

State

- County
- County of interest

Buildings

Marshland

Waterbodies

- Roads
- Waterways

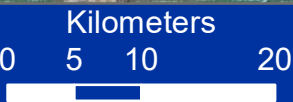
Land Ownership types

- Individual
- Free Communal
- Ancestral
- Leased Land
- Informal Land Tenure

Data Source: IOM/DTM, NBS, OCHA, Maxar, OSM

Year: 2019

Comments & feedback: southsudandtm@iom.int



The boundaries on the map do not imply official endorsement or acceptance by the Government of the Republic of South Sudan or by IOM. The map is for planning purposes only. IOM cannot guarantee that the map is error free and therefore accepts no liability for consequential or indirect damages arising from its use.



- Roads Roads
- Waterways
- Waterbodies

Comments & feedback: southsudandtm@iom.int

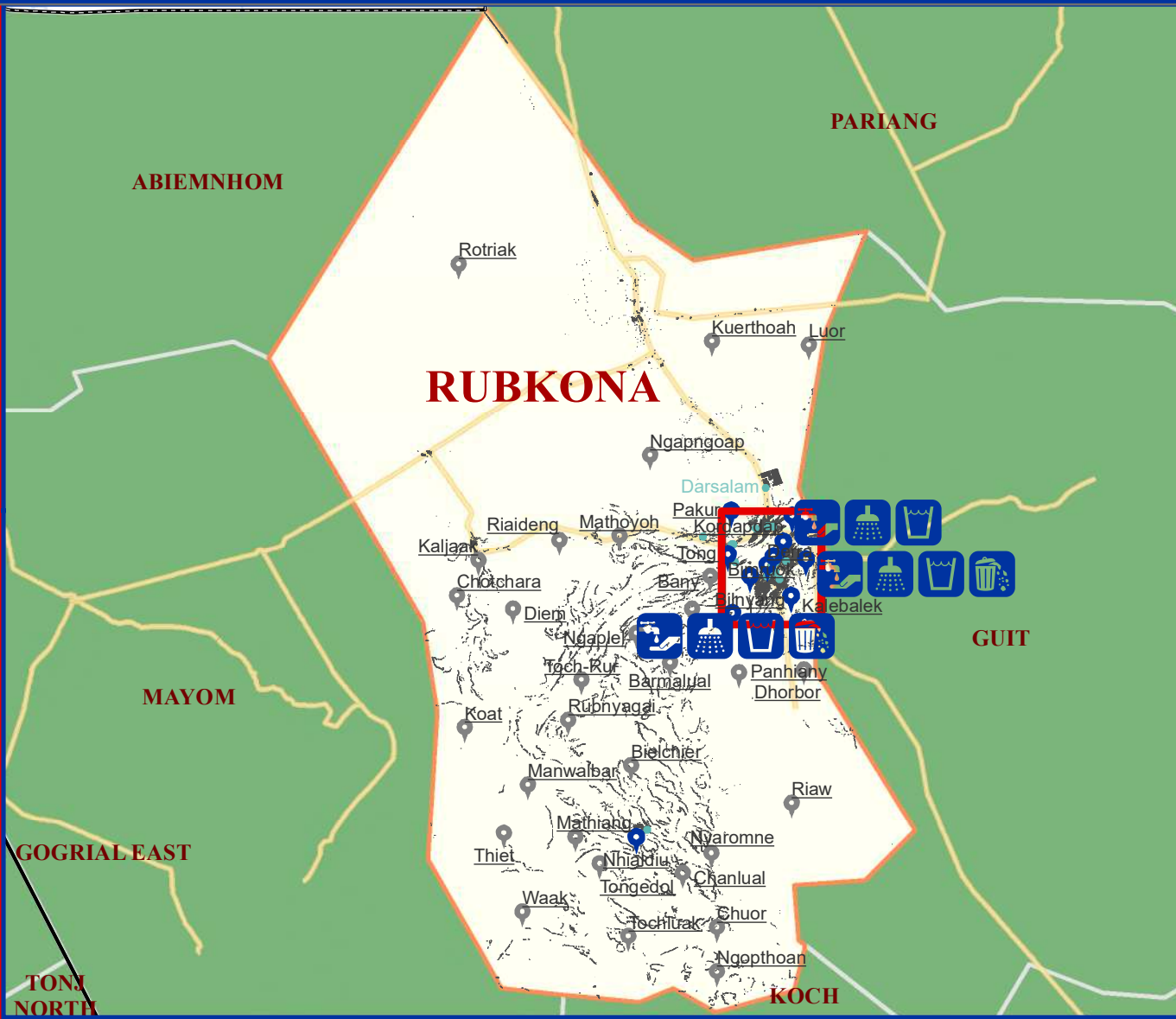
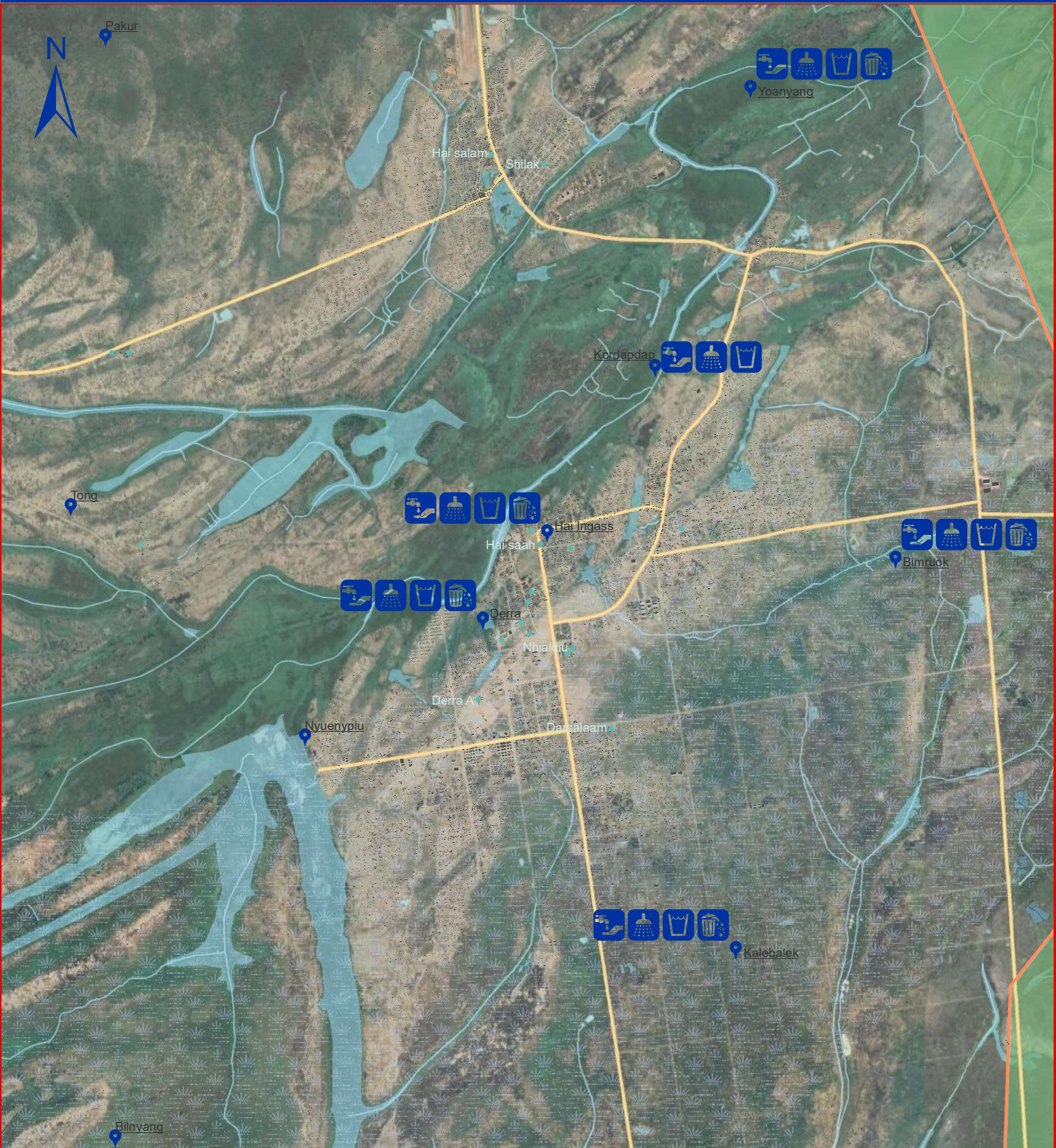
The boundaries on the map do not imply official endorsement or acceptance by the Government of the Republic of South Sudan or by IOM. The map is for planning purposes only. IOM cannot guarantee that the map is error free and therefore accepts no liability for consequential or indirect damages arising from its use.

0 5 10 20



Received hygiene and sanitation education topic

Unity_Rubkona



Legend

Boma Coverage

- Assessed
- Not Assessed
- Boma Name
- Village
- State
- County

County of interest

- Buildings
- Roads
- Waterways
- Marshland
- Waterbodies

Hygiene education topic

- Clean hygiene
- Clean drinking water
- Hand washing
- Garbage disposal
- Other

Data Source: IOM/DTM, NBS, OCHA, Maxar, OSM

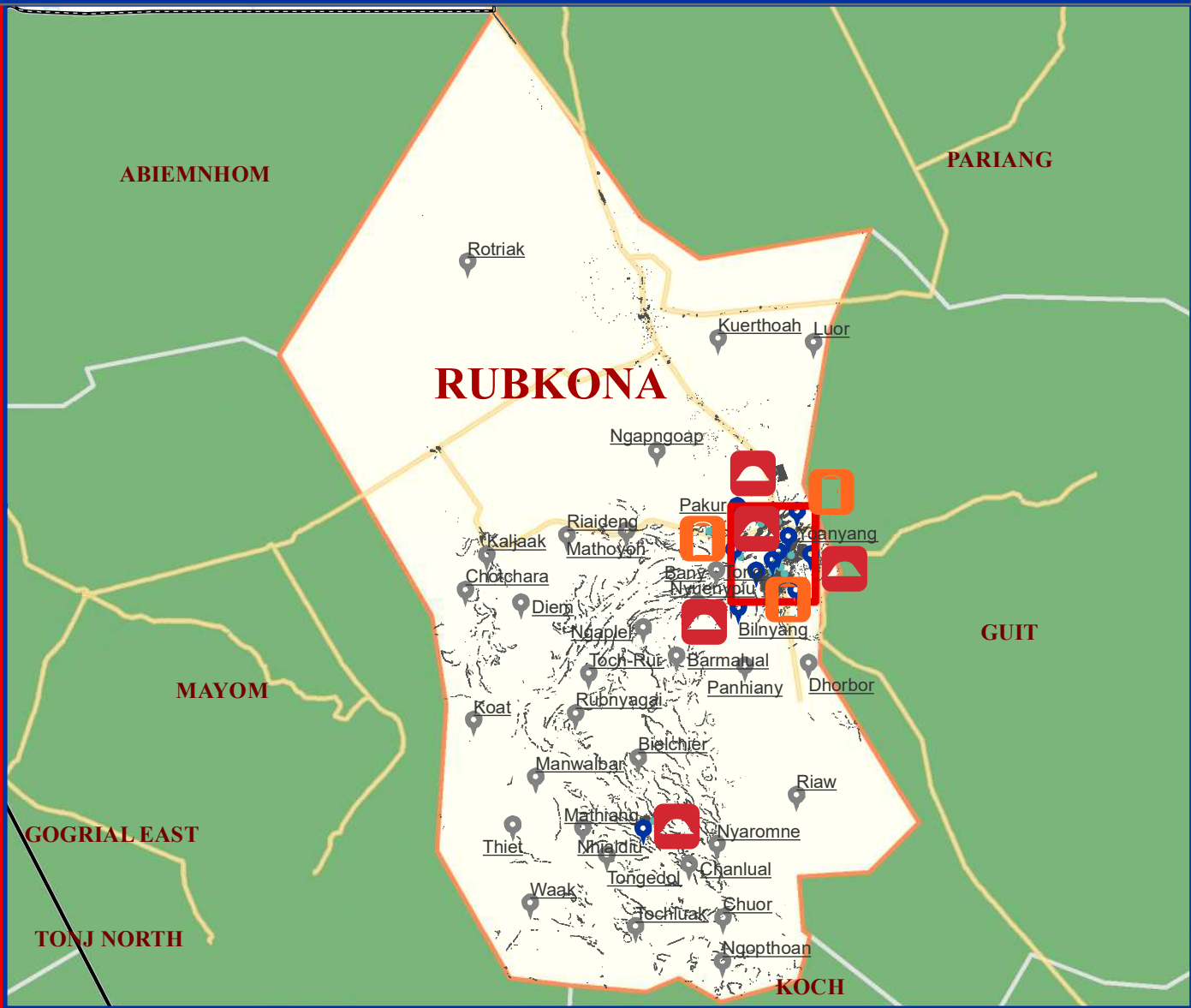
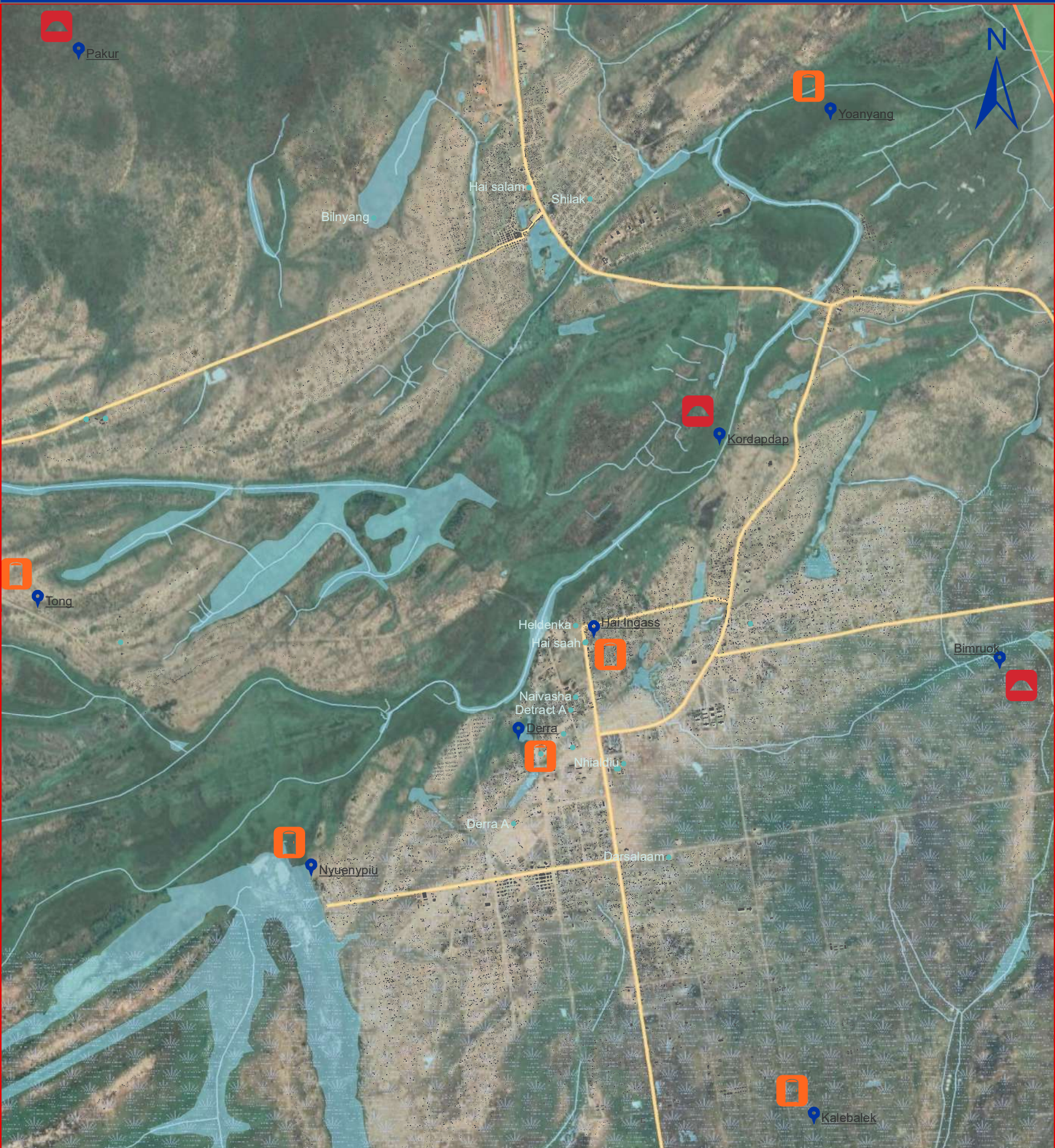
Year: 2019

Comments & feedback: southsudandtm@iom.int

The boundaries on the map do not imply official endorsement or acceptance by the Government of the Republic of South Sudan or by IOM. The map is for planning purposes only. IOM cannot guarantee that the map is error free and therefore accepts no liability for consequential or indirect damages arising from its use.

Most common form of defecation

Unity_Rubkona



Legend

Boma coverage

- Assessed
- Not Assessed
- Boma Name
- Village
- State
- County

County of interest

- County of interest
- Buildings
- Roads
- Waterways
- Marshland
- Waterbodies

Most common form of defecation

- Household latrines
- Open air/bush
- Public latrines

Data Source: IOM/DTM, NBS, OCHA, Maxar, OSM

Year: 2019

Comments & feedback: southsudandtm@iom.int

The boundaries on the map do not imply official endorsement or acceptance by the Government of the Republic of South Sudan or by IOM. The map is for planning purposes only. IOM cannot guarantee that the map is error free and therefore accepts no liability for consequential or indirect damages arising from its use.