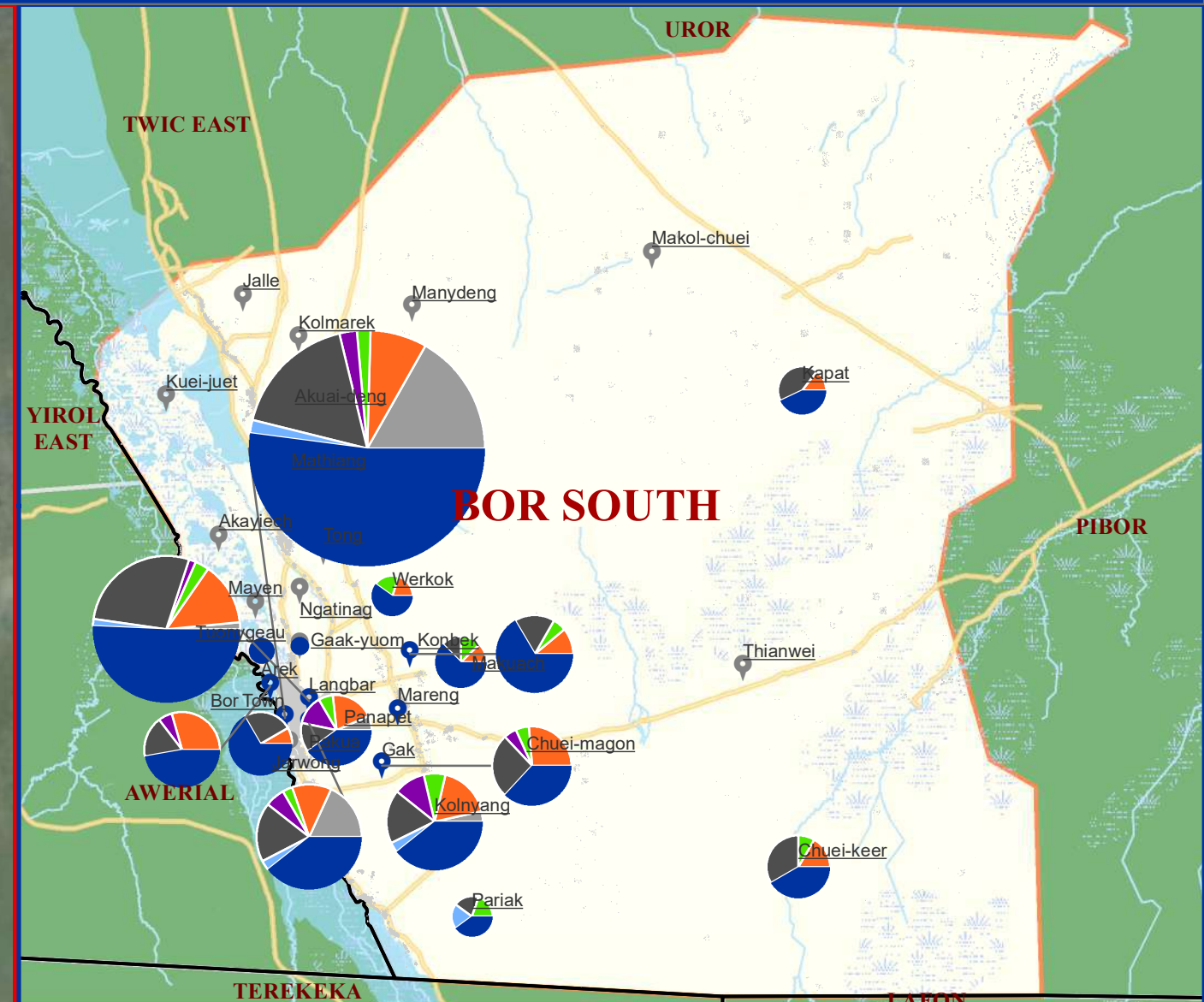
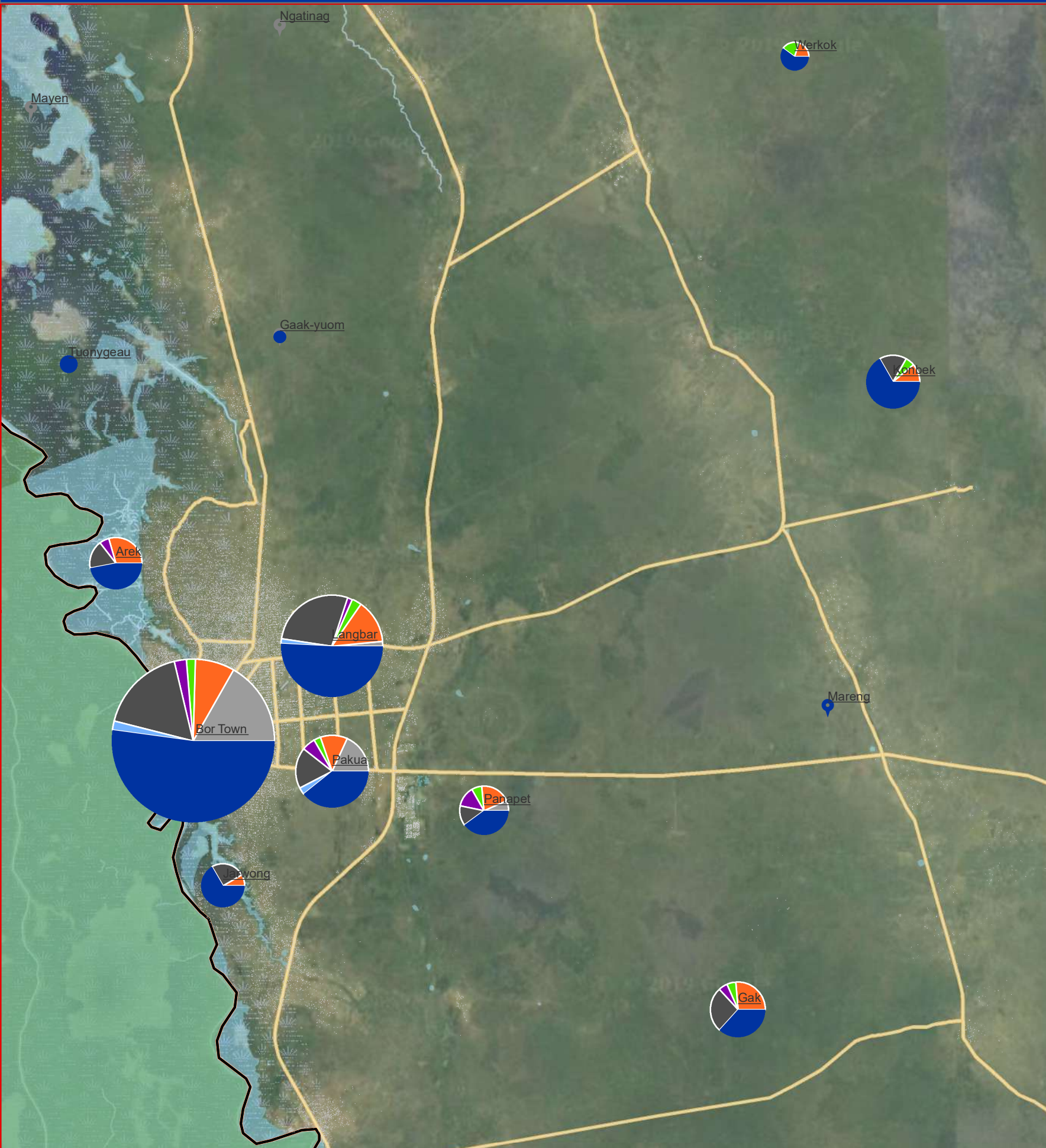




Facilities by boma

Jonglei_Bor South



Legend

Sum of Fields



16

- Administrative_total
- Education_Total
- Healthcare_Total
- Market_Total
- Religious_Total
- Transport_Total
- Water_point_Total

Boma coverage

- Assessed
- Not Assessed
- Boma Name
- Village
- Buildings

- State Admin 1 State
- Roads Roads
- Waterways
- Marshland
- Waterbodies
- County of interest Admin 2 County
- County Admin 2 County

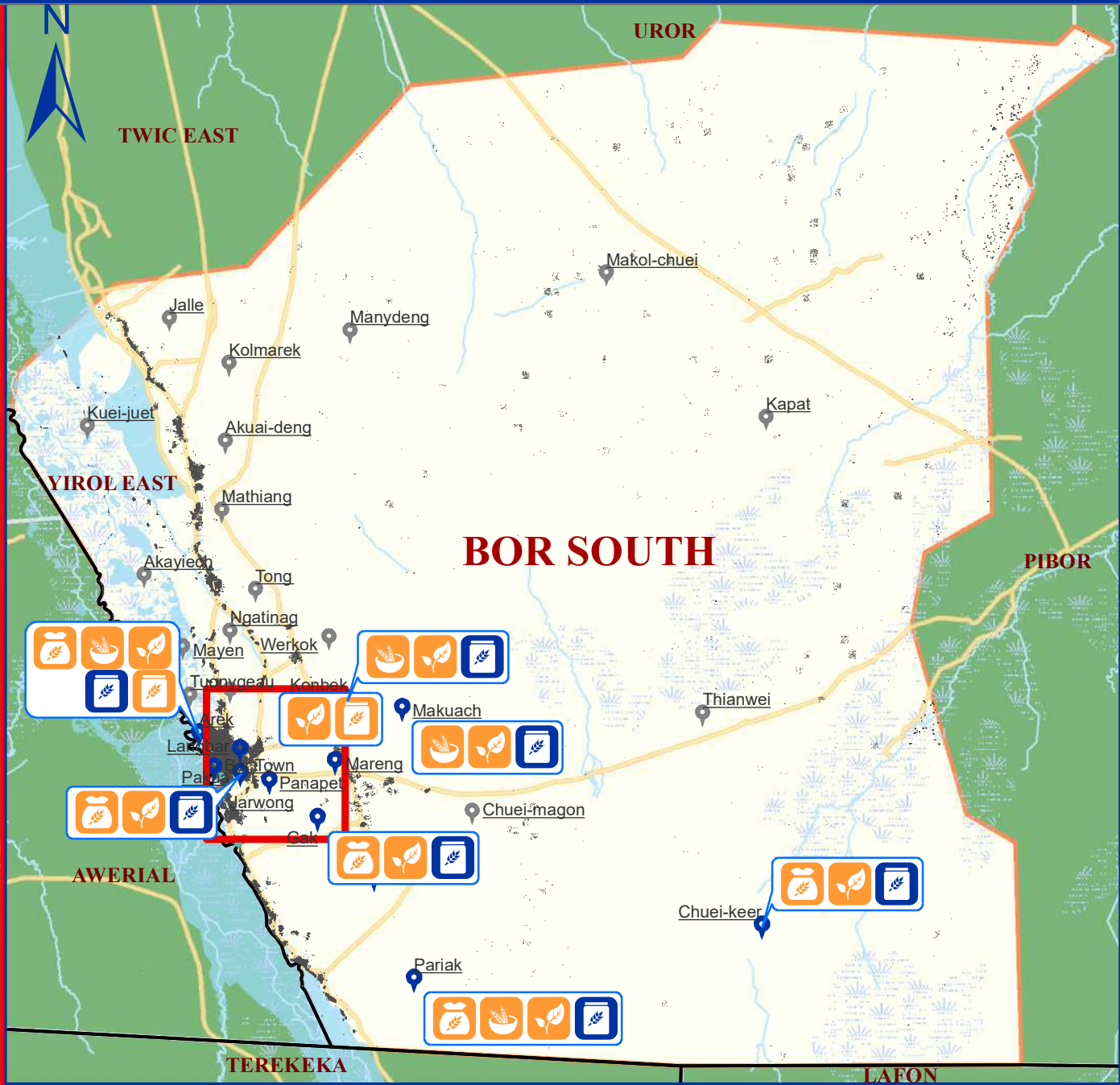
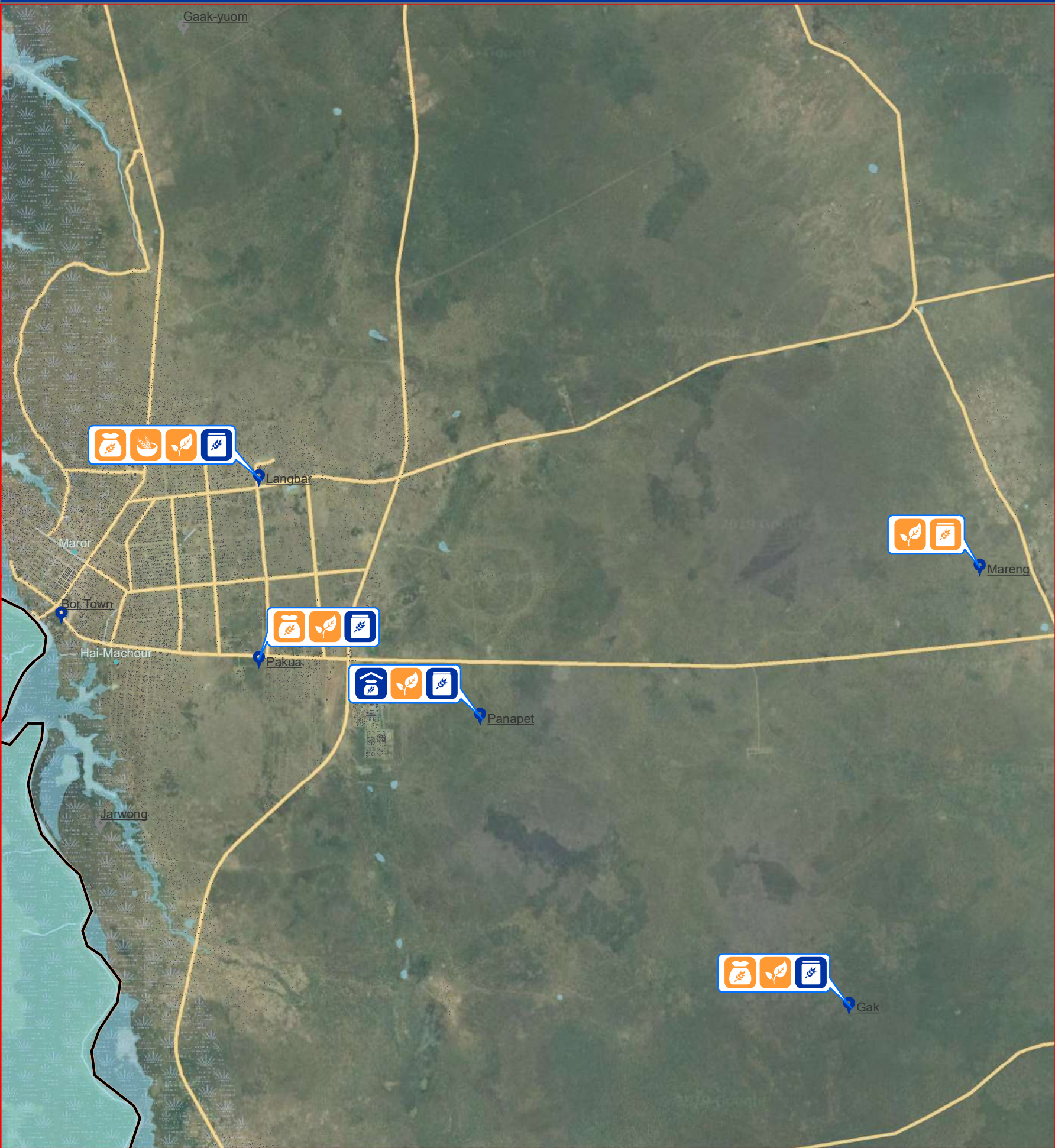
Data Source: IOM/DTM, NBS, OCHA, Maxar, OSM
Year: 2019
Comments & feedback: southsudandtm@iom.int

The boundaries on the map do not imply official endorsement or acceptance by the Government of the Republic of South Sudan or by IOM. The map is for planning purposes only. IOM cannot guarantee that the map is error free and therefore accepts no liability for consequential or indirect damages arising from its use.

04.2 8.5 17 25.5 34
Kilometers

Major Food Crops Grown

Jonglei_Bor South



Legend

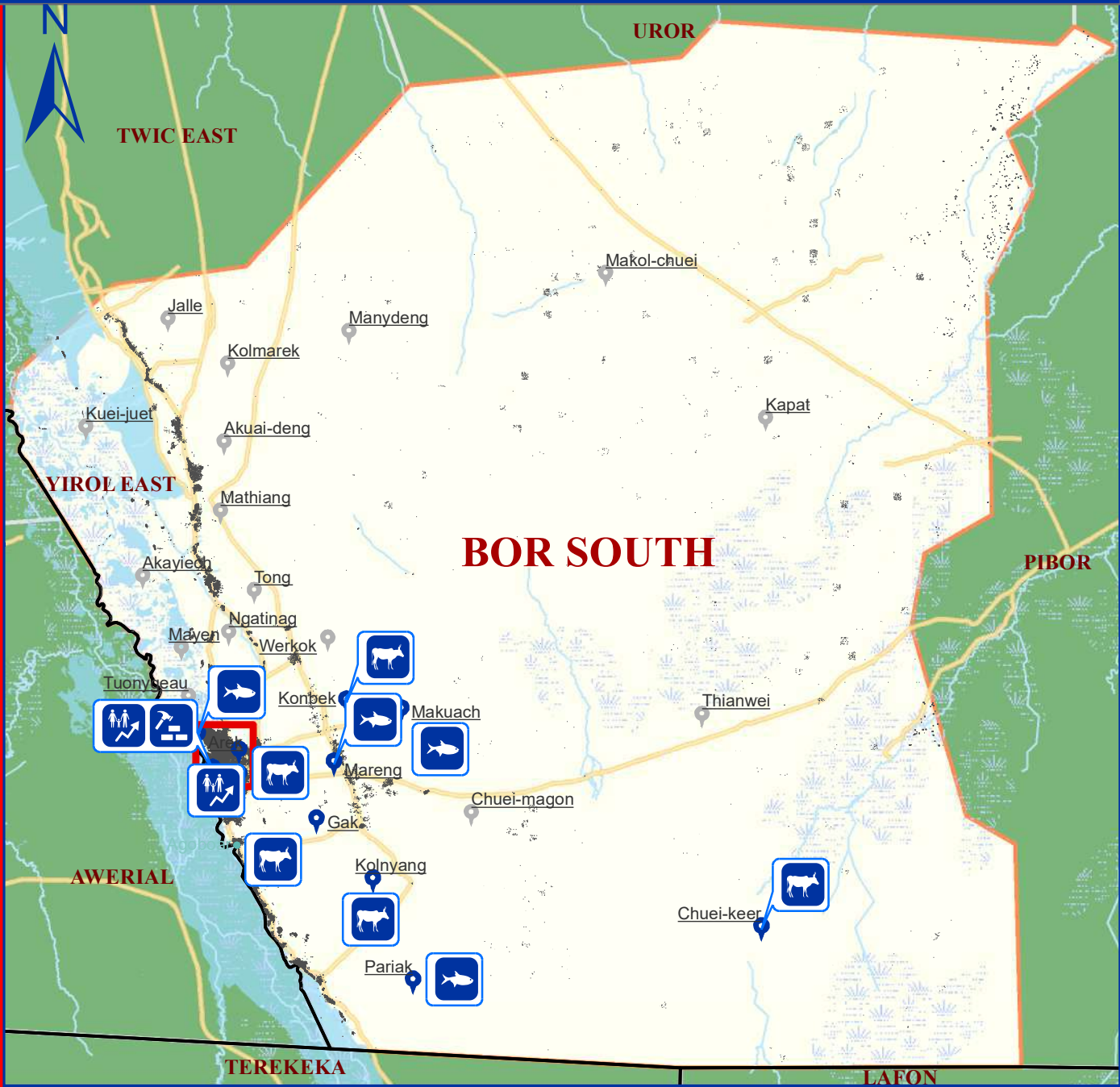
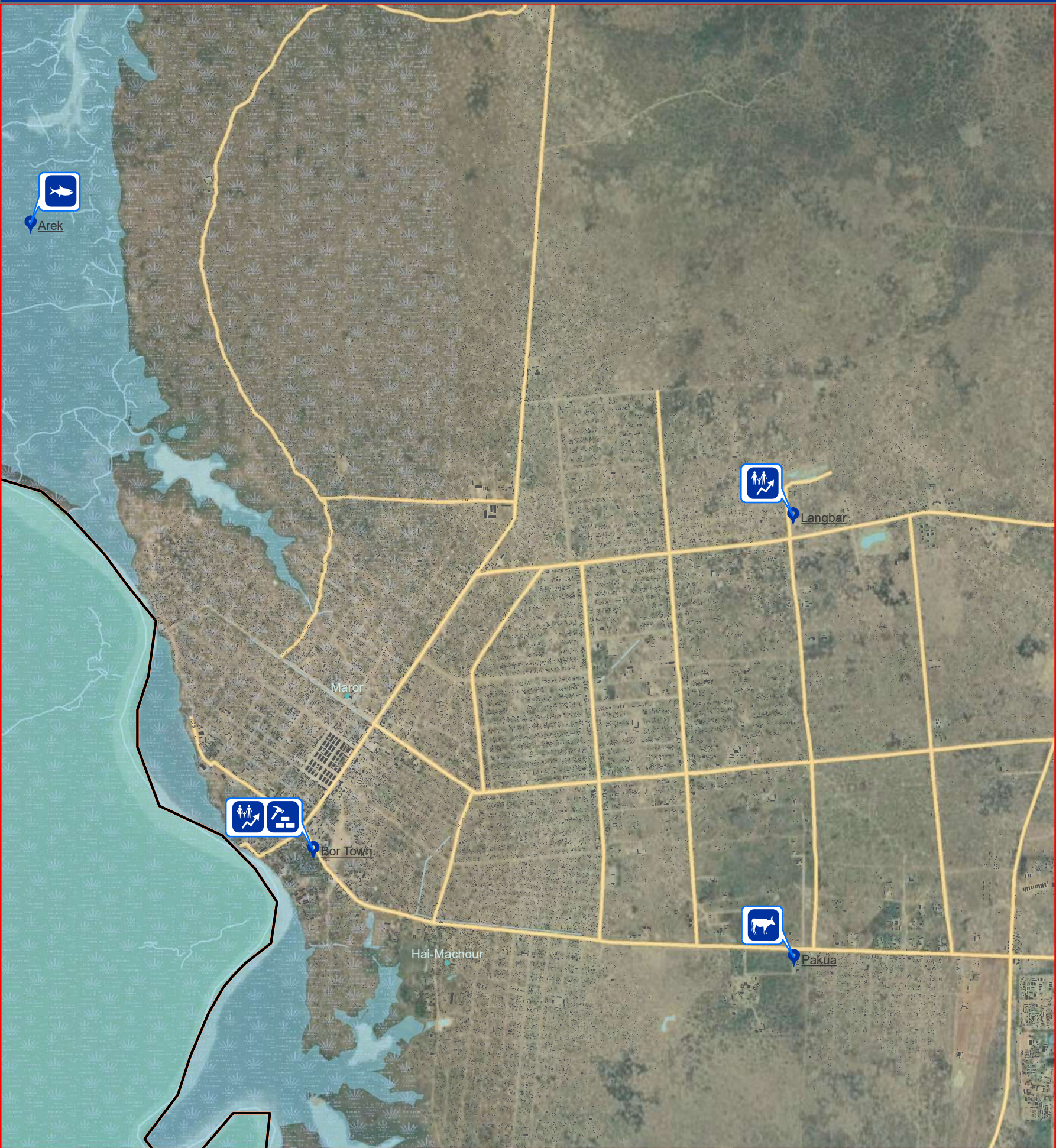
Boma Coverage	State	Roads	Food Crops
Assessed	County	Waterways	Finger Millet
Not assessed	County of interest	Waterbodies	Sorghum
Boma Name	Buildings		Groundnuts
Village	Marshland		Rice

Data Source: IOM/DTM, NBS, OCHA, Maxar, OSM
Year: 2019
Comments & feedback: southsudandtm@iom.int

The boundaries on the map do not imply official endorsement or acceptance by the Government of the Republic of South Sudan or by IOM. The map is for planning purposes only. IOM cannot guarantee that the map is error free and therefore accepts no liability for consequential or indirect damages arising from its use.

Major Livelihood Practices

Jonglei_Bor South



Boma Coverage

- Assessed
- Not Assessed
- Boma Name
- Village

Legend

- State
- County
- County of interest
- Buildings
- Marshland

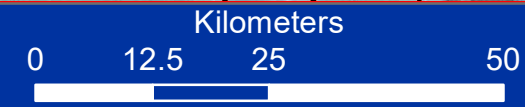
Livelihood shocks

- Drought
- Floods
- Livestock diseases
- Human epidemic
- Crop diseases
- Pests
- Conflict

Data Source: IOM/DTM, NBS, OCHA, Maxar, OSM

Year: 2019

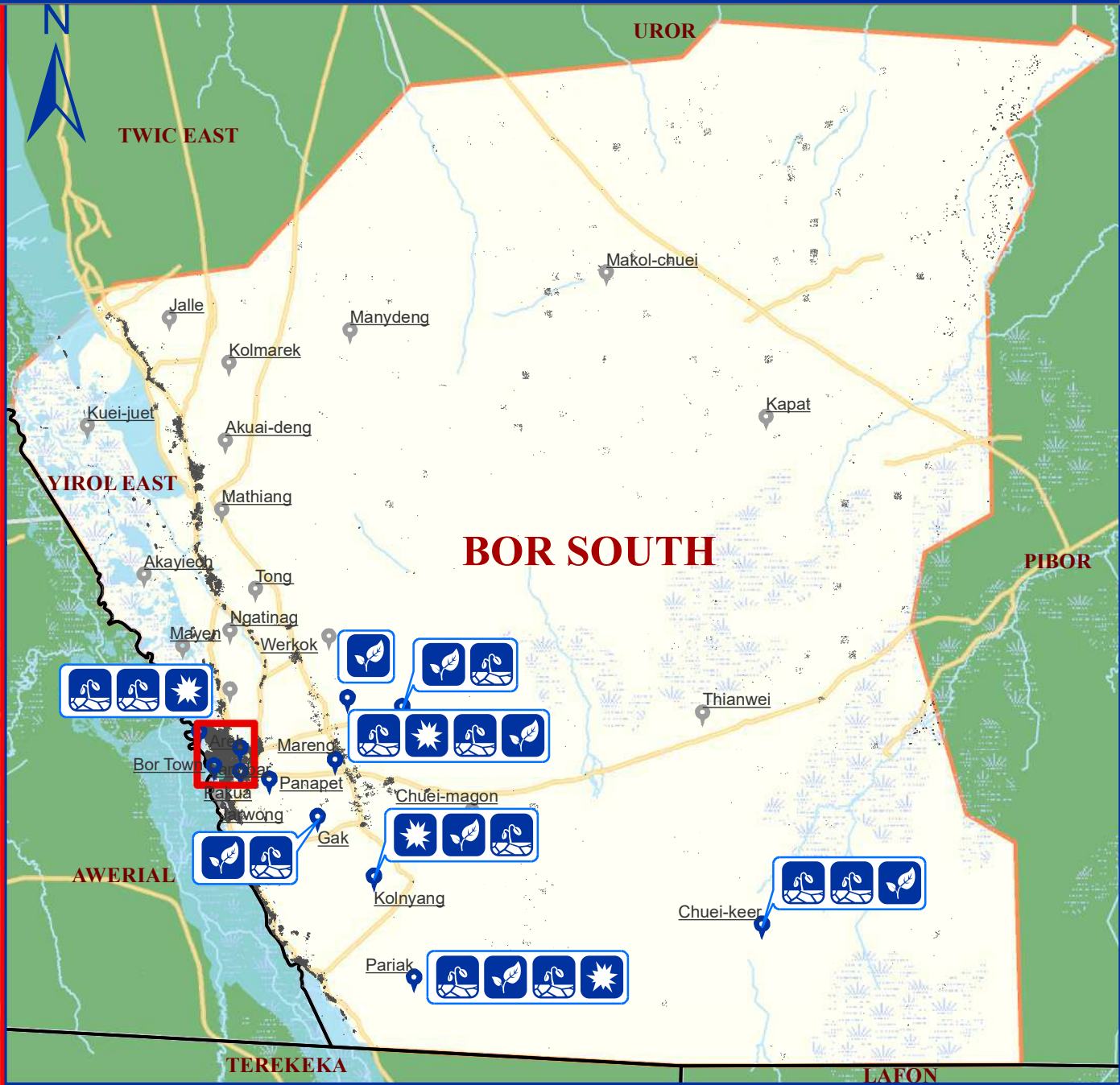
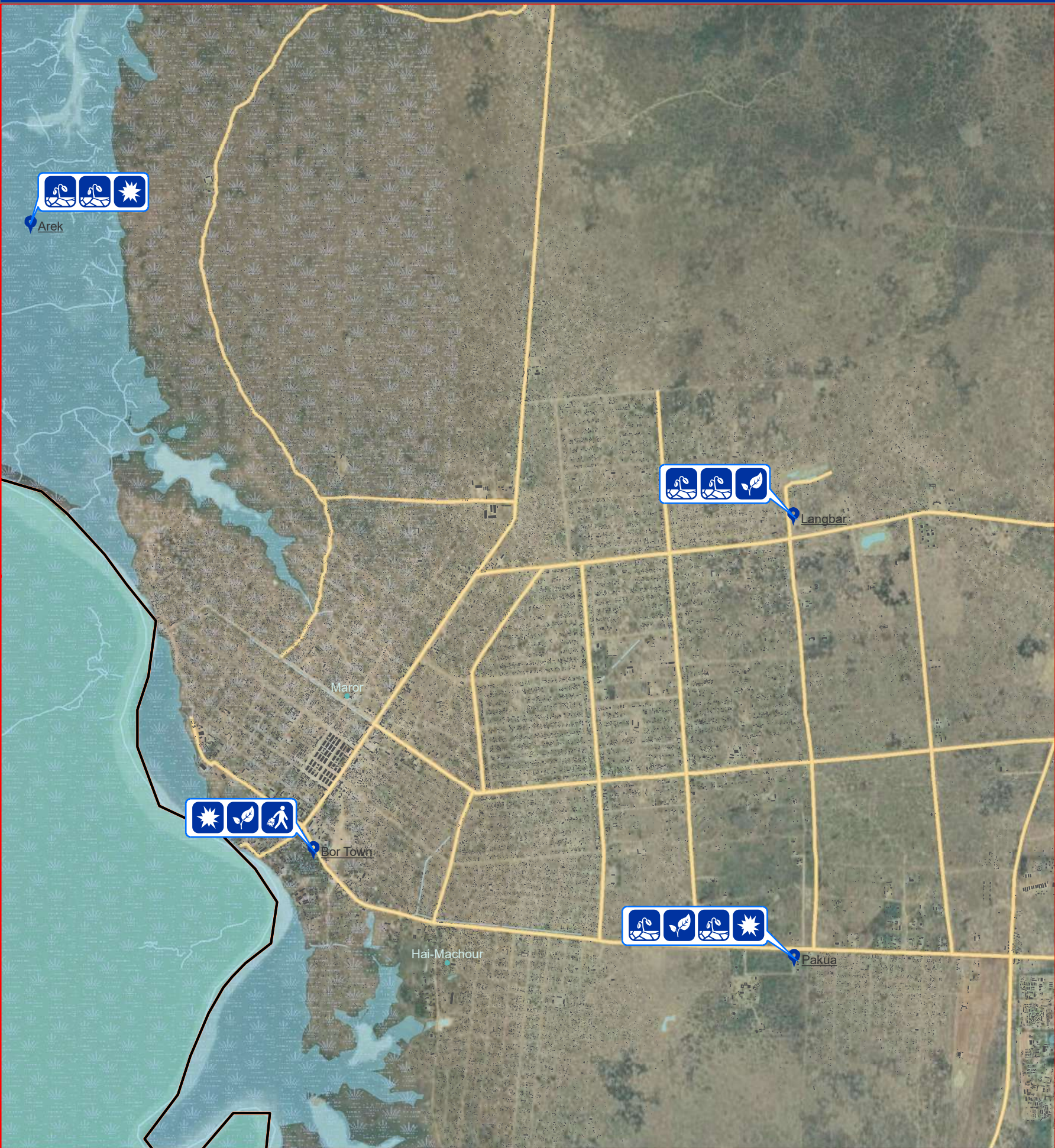
Comments & feedback: southsudandtm@iom.int



The boundaries on the map do not imply official endorsement or acceptance by the Government of the Republic of South Sudan or by IOM. The map is for planning purposes only. IOM cannot guarantee that the map is error free and therefore accepts no liability for consequential or indirect damages arising from its use.

Problems Affecting Farming

Jonglei_Bor South



Legend

Boma Coverage

- Assessed
- Not assessed
- Boma Name**
- Village

State

County

County of interest

Buildings

Marshland

Roads

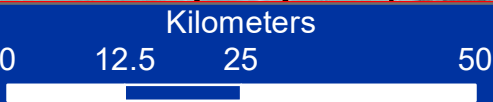
Waterways

Waterbodies

Farming Problems

- Crop Disease
- Conflict
- Natural Disaster
- Market Accessibility
- Other Crop Damage

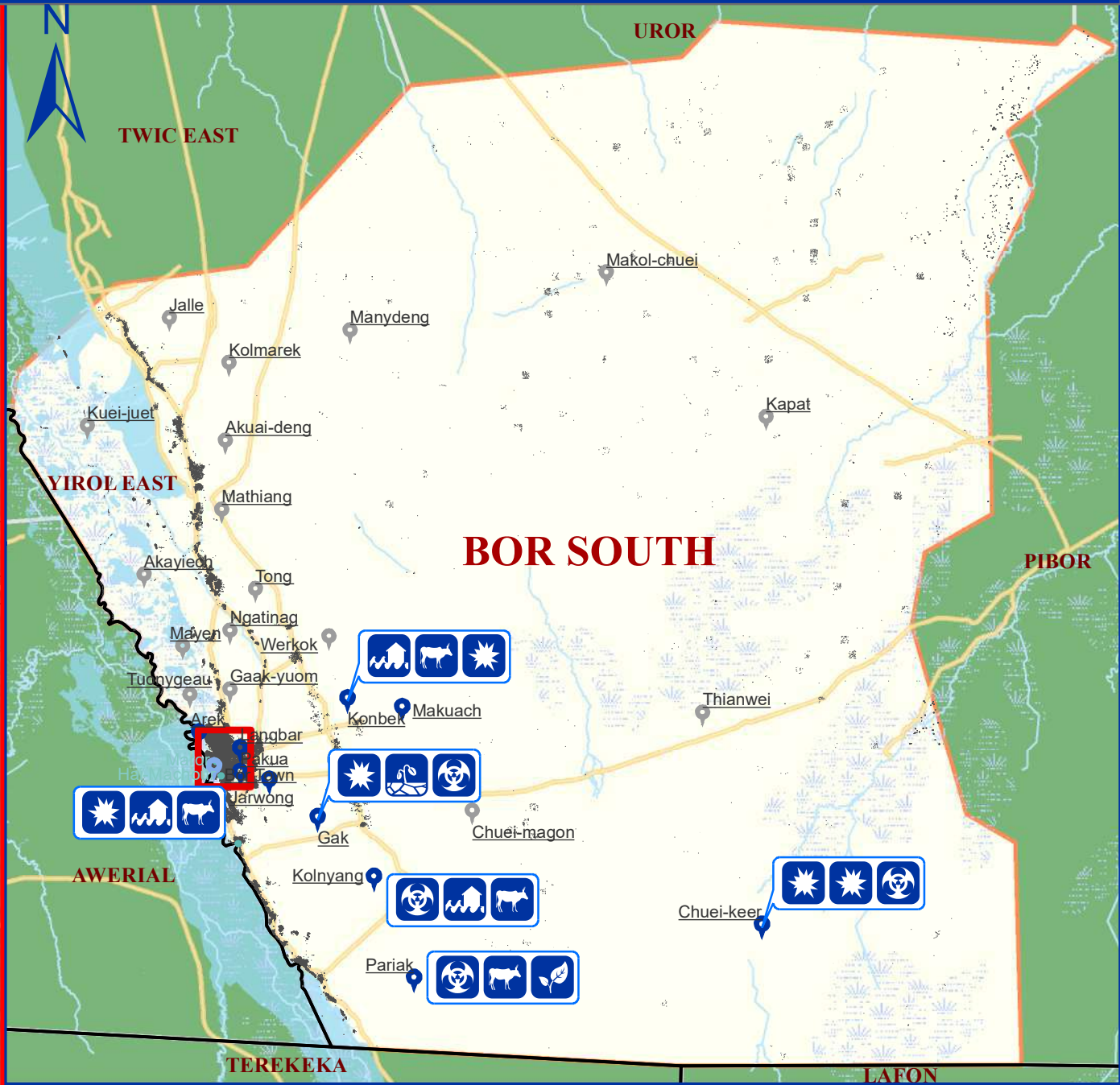
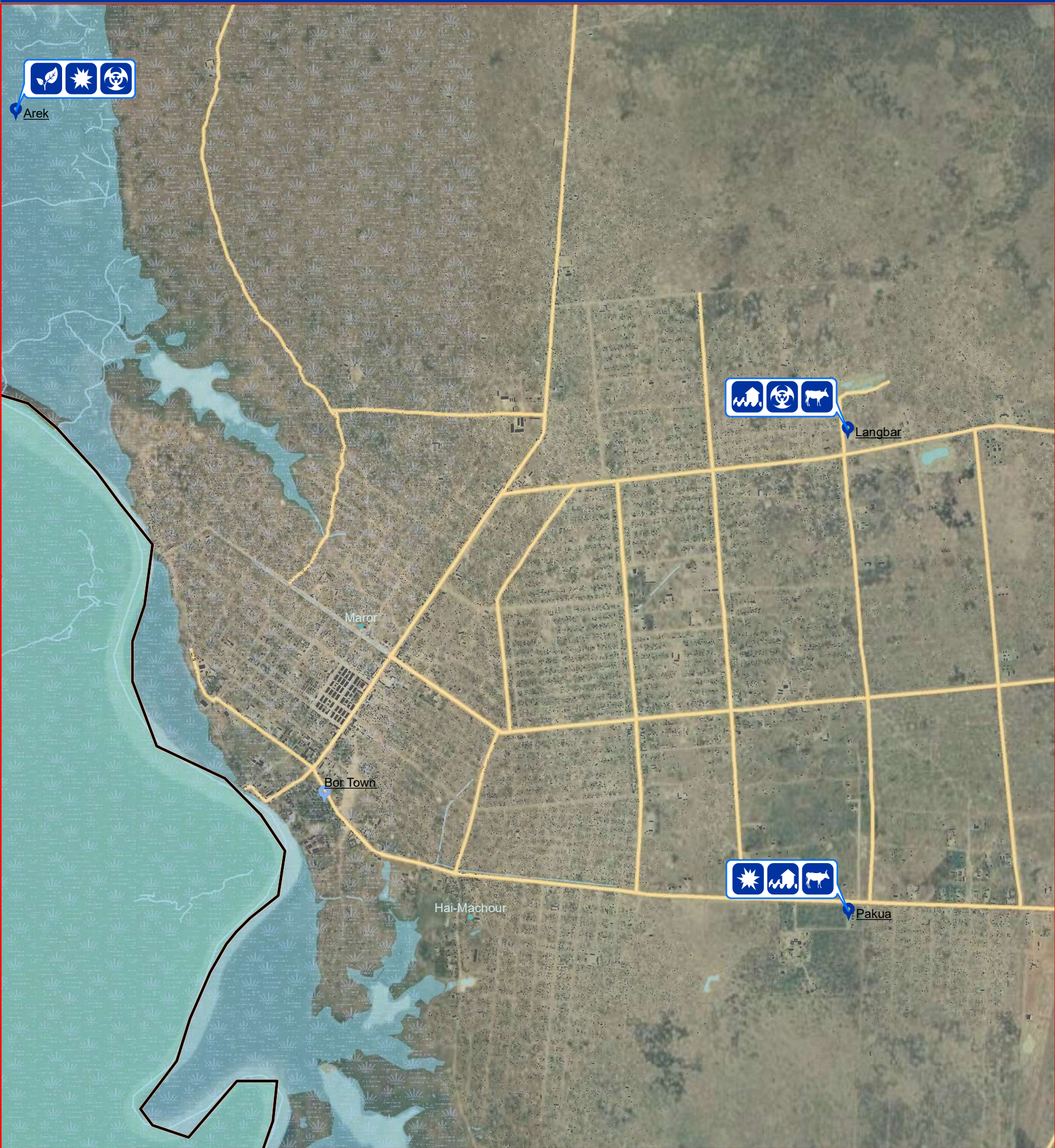
Data Source: IOM/DTM, NBS, OCHA, Maxar, OSM
Year: 2019
Comments & feedback: southsudandtm@iom.int



The boundaries on the map do not imply official endorsement or acceptance by the Government of the Republic of South Sudan or by IOM. The map is for planning purposes only. IOM cannot guarantee that the map is error free and therefore accepts no liability for consequential or indirect damages arising from its use.

Top Three Livelihood Shocks

Jonglei_Bor South



Boma Coverage

- Assessed but no shocks
- Assessed with shocks
- Not Assessed

Boma Name

- Village

Legend

- State
- County
- County of interest
- Buildings
- Marshland
- Roads

Livelihood Shocks

- Drought
- Flood
- Livestock Disease
- Human Epidemic
- Crop Disease
- Pests
- Conflict

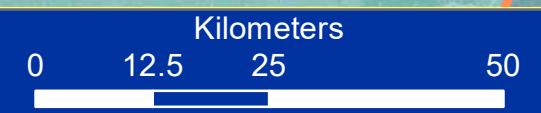
Data Source: IOM/DTM, NBS, OCHA, Maxar, OSM

Year: 2019

Comments & feedback: southsudandtm@iom.int



The boundaries on the map do not imply official endorsement or acceptance by the Government of the Republic of South Sudan or by IOM. The map is for planning purposes only. IOM cannot guarantee that the map is error free and therefore accepts no liability for consequential or indirect damages arising from its use.



Legend

Boma Access

- Yes
- No
- Not Assessed

- Village
- State
- County
- County of interest

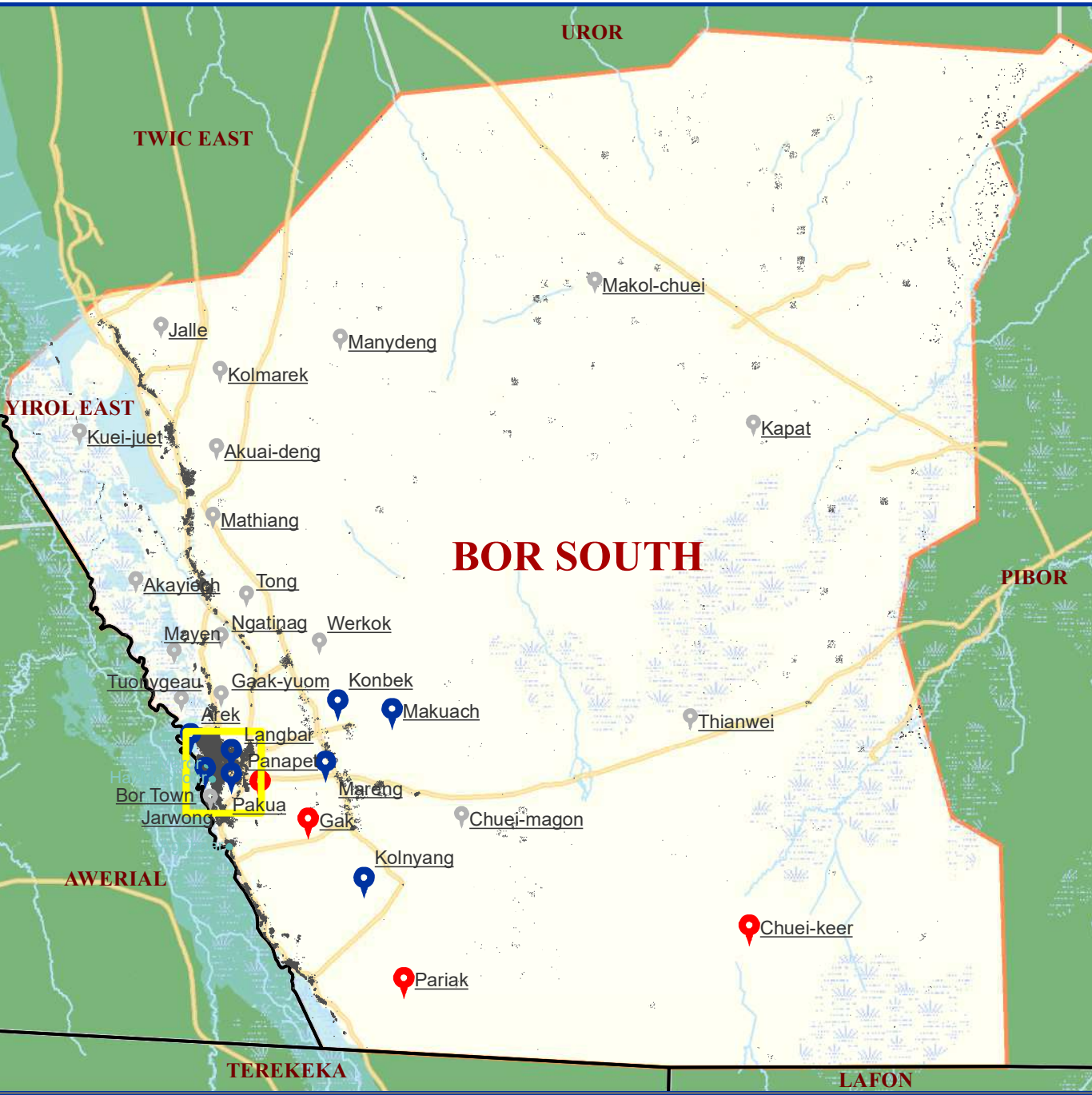
- Buildings
- Marshland
- Waterbodies
- Roads

- Waterways
- Boma Name

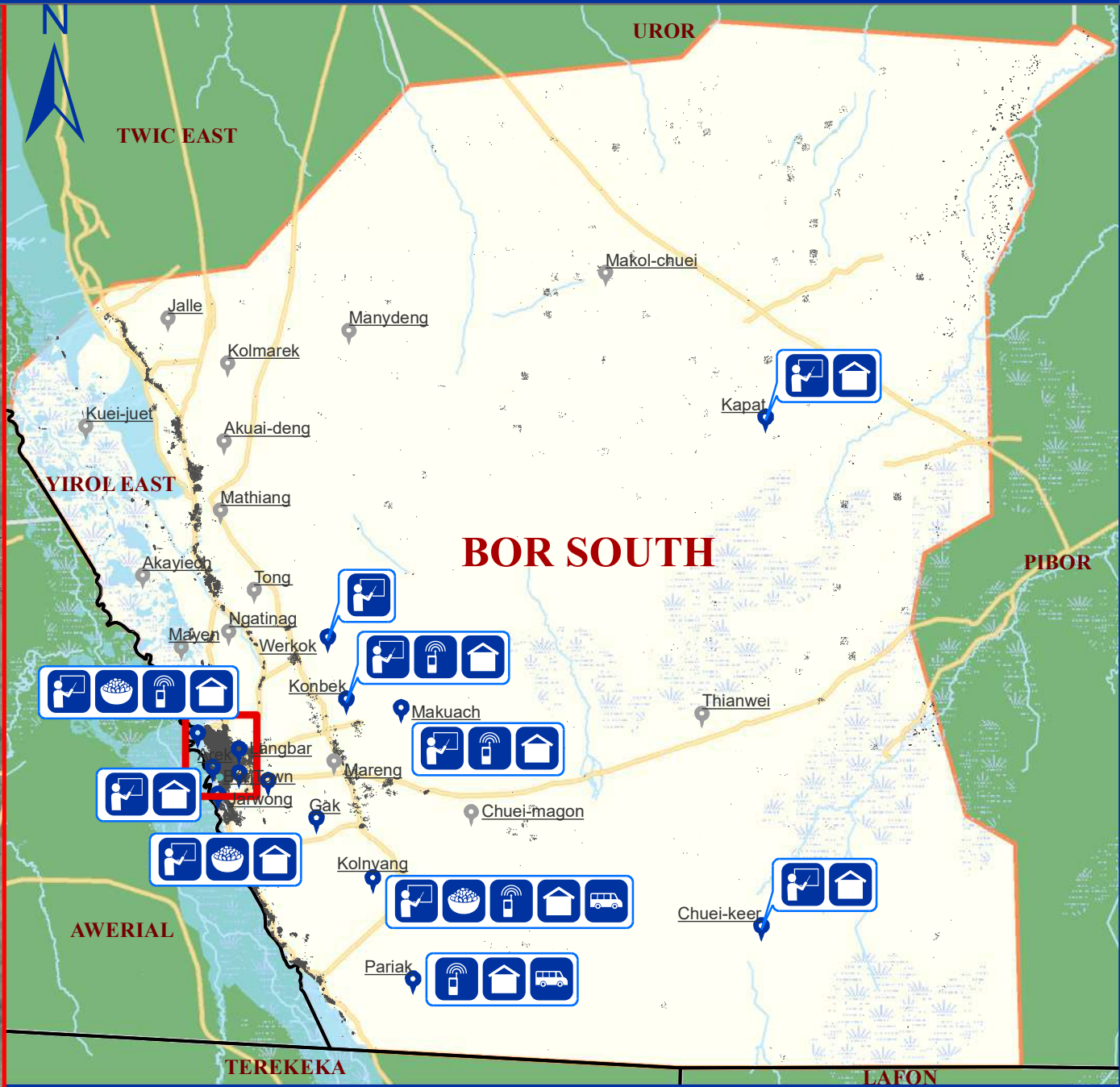
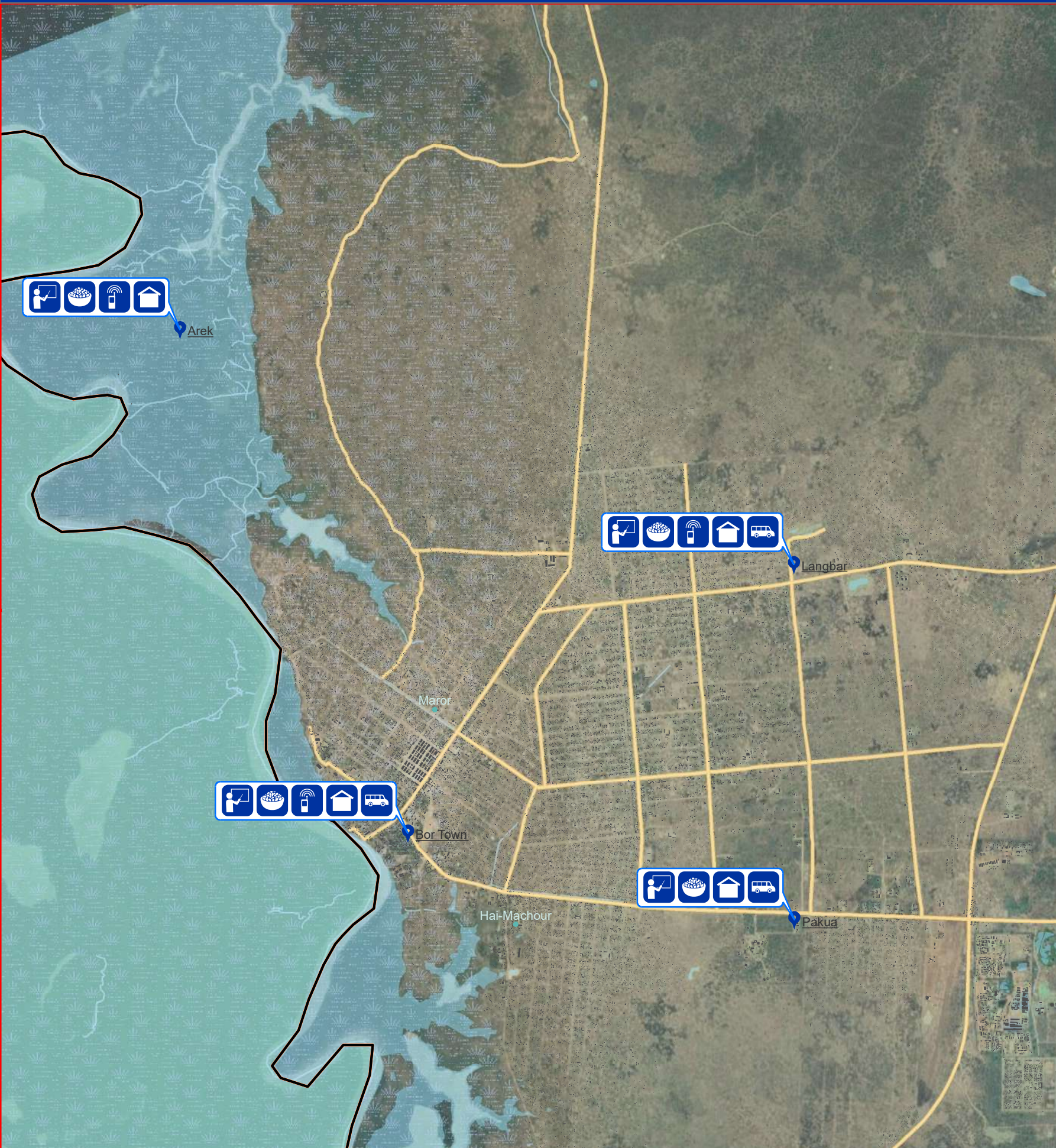
Data Source: IOM/DTM, NBS, OCHA, Maxar, OSM

Year: 2019

Comments & feedback: southsudandtm@iom.int



The boundaries on the map do not imply official endorsement or acceptance by the Government of the Republic of South Sudan or by IOM. The map is for planning purposes only. IOM cannot guarantee that the map is error free and therefore accepts no liability for consequential or indirect damages arising from its use.



Boma Coverage

- Assessed
- Not assessed

Boma Name

- Village

Legend

- State
- County
- County of interest
- Buildings
- Marshland

Facilities

- Education
- Health
- Public Transport
- Mobile Coverage
- Boma Market
- Religious Establishment
- Police Station

Data Source: IOM/DTM, NBS, OCHA, Maxar, OSM

Year: 2019

Comments & feedback: southsudandtm@iom.int