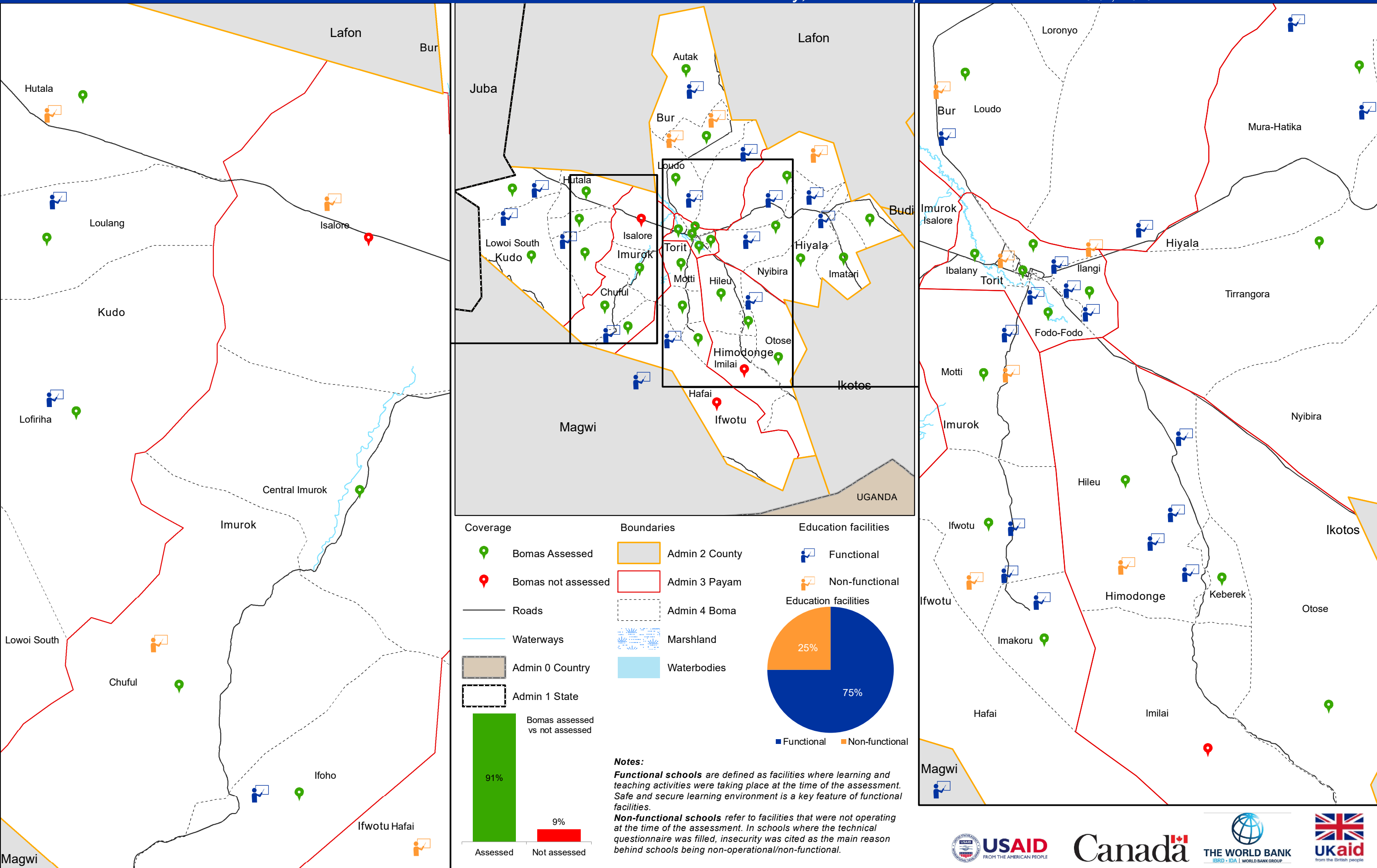


# Education Facilities by Functionality

Torit County, Eastern Equatoria State

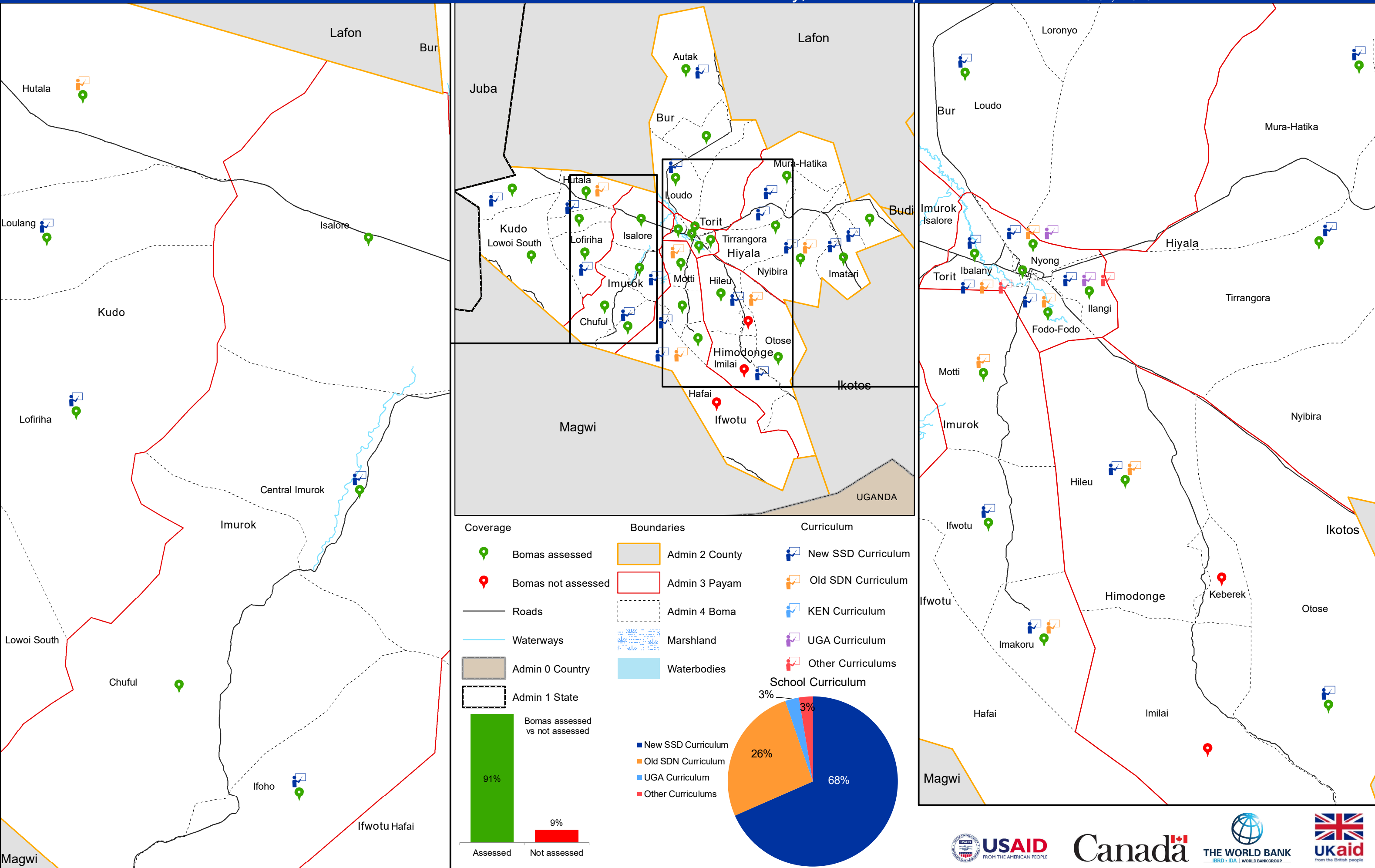
March, 2020



The boundaries on the map do not imply official endorsement or acceptance by the Government of the Republic of South Sudan or by IOM. The map is for planning purposes only. IOM cannot guarantee that the map is error free and therefore accepts no liability for consequential or indirect damages arising from its use.



Data Source: IOM/DTM, National Bureau of Statistics, OCHA, Maxar, OpenStreetMap  
Comments & feedback: southsudandtm@iom.int

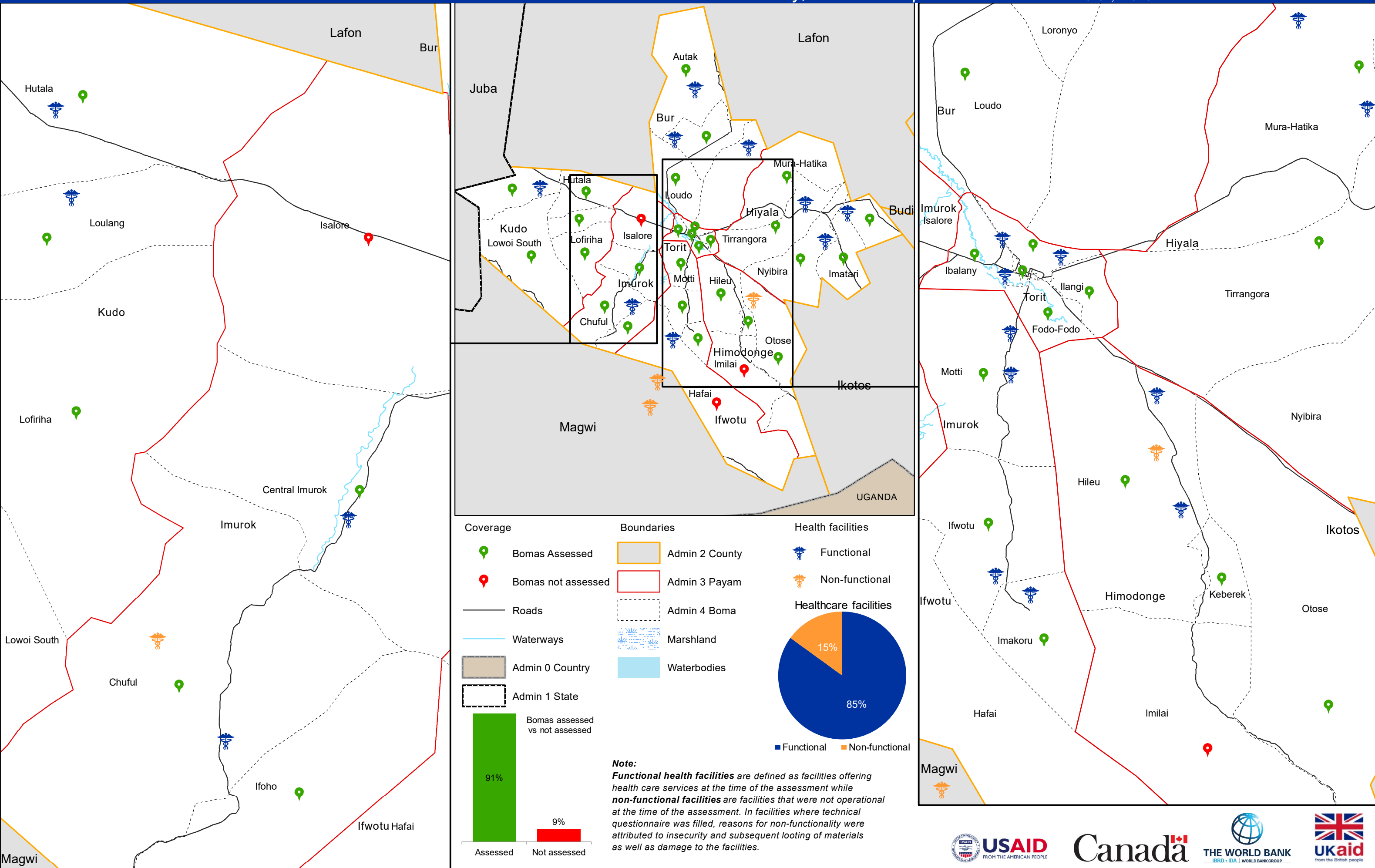




# Healthcare Facilities by Functionality

Torit County, Eastern Equatoria State

March, 2020



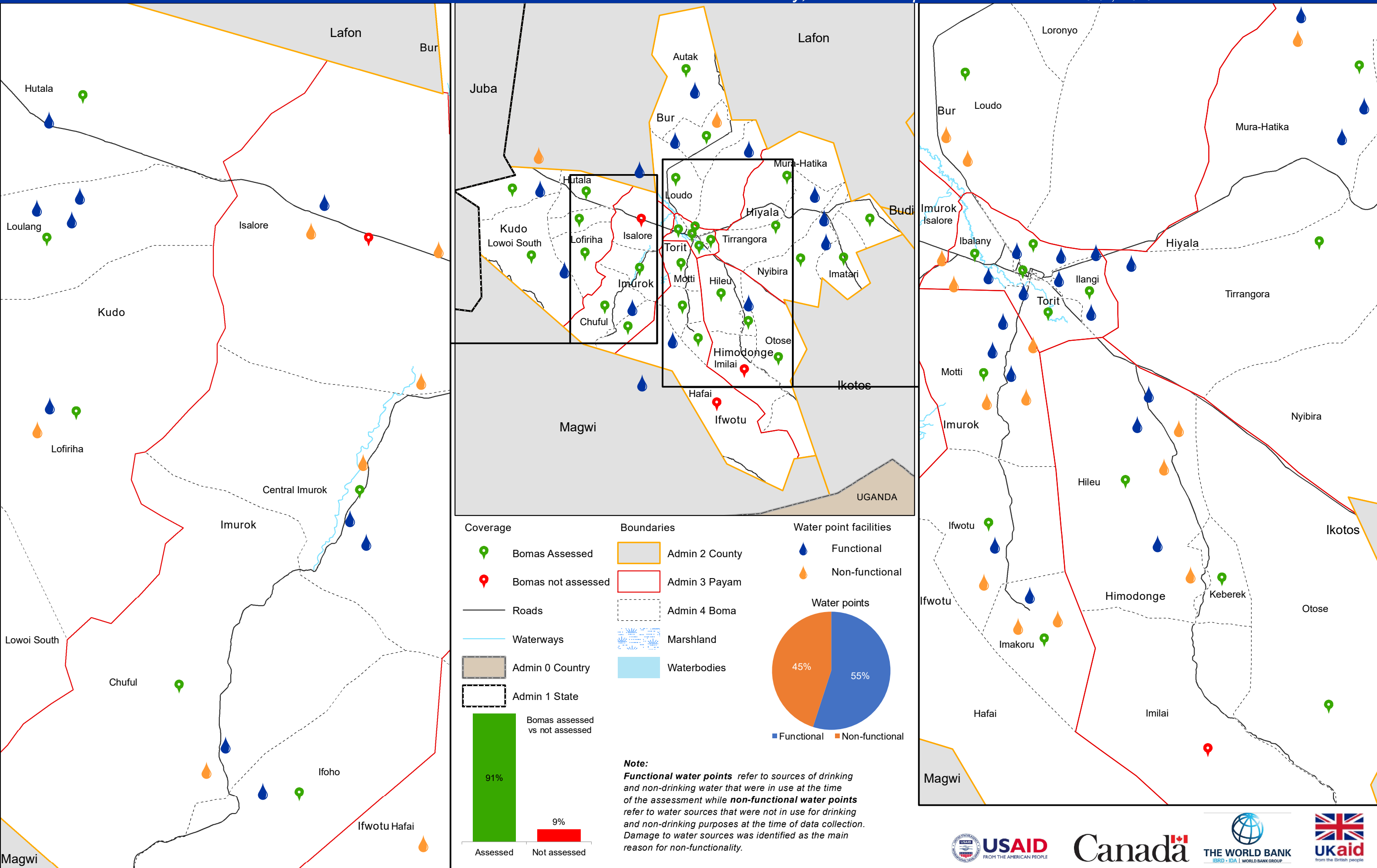
The boundaries on the map do not imply official endorsement or acceptance by the Government of the Republic of South Sudan or by IOM. The map is for planning purposes only. IOM cannot guarantee that the map is error free and therefore accepts no liability for consequential or indirect damages arising from its use.



# Improved Water Point Facilities

Torit County, Eastern Equatoria State

March, 2020



The boundaries on the map do not imply official endorsement or acceptance by the Government of the Republic of South Sudan or by IOM. The map is for planning purposes only. IOM cannot guarantee that the map is error free and therefore accepts no liability for consequential or indirect damages arising from its use.

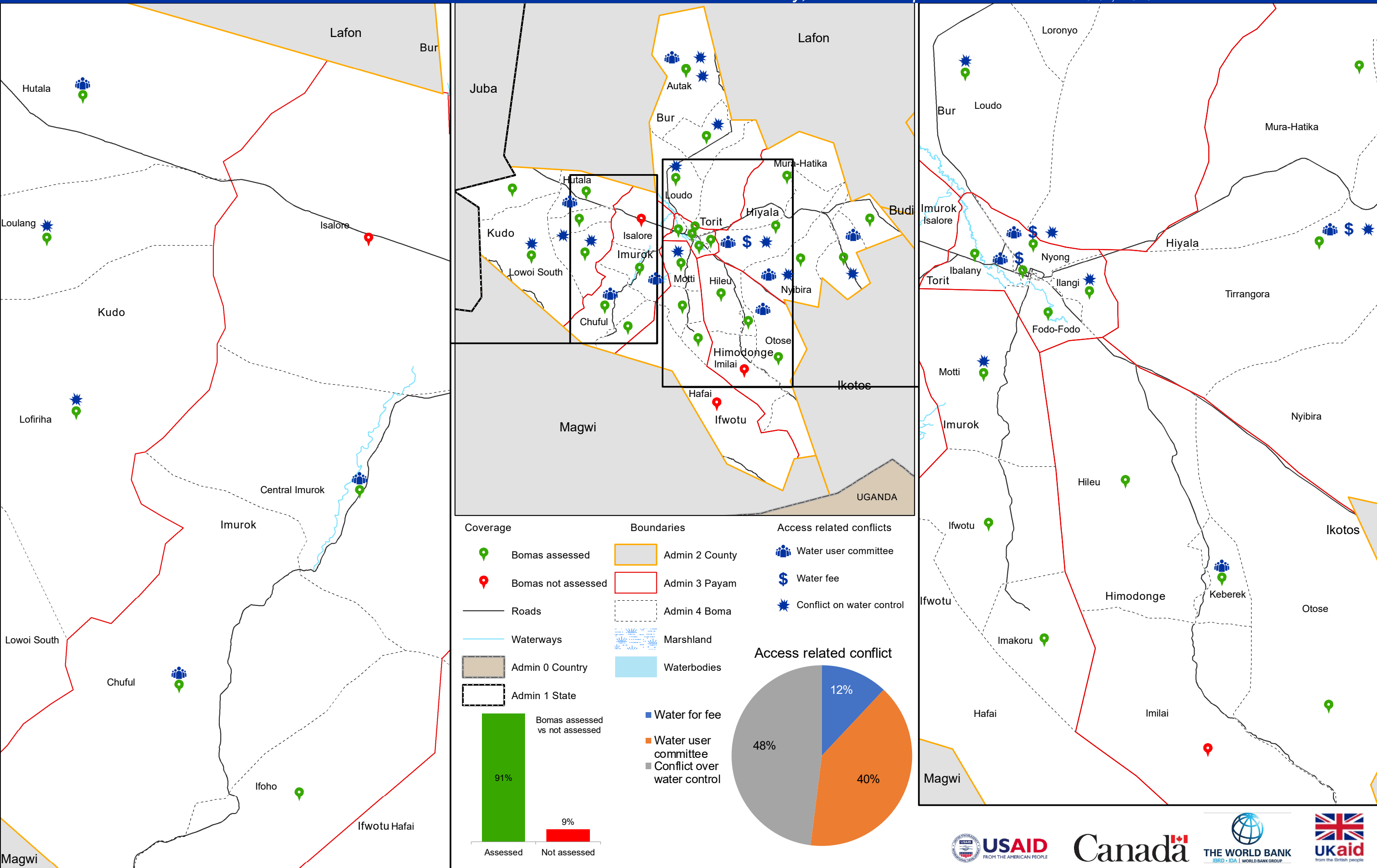


Data Source: IOM/DTM, National Bureau of Statistics, OCHA, Maxar, OpenStreetMap  
Comments & feedback: southsudandtm@iom.int

# Access to Water and Related Conflict

Torit County, Eastern Equatoria State

March, 2020



The boundaries on the map do not imply official endorsement or acceptance by the Government of the Republic of South Sudan or by IOM. The map is for planning purposes only. IOM cannot guarantee that the map is error free and therefore accepts no liability for consequential or indirect damages arising from its use.



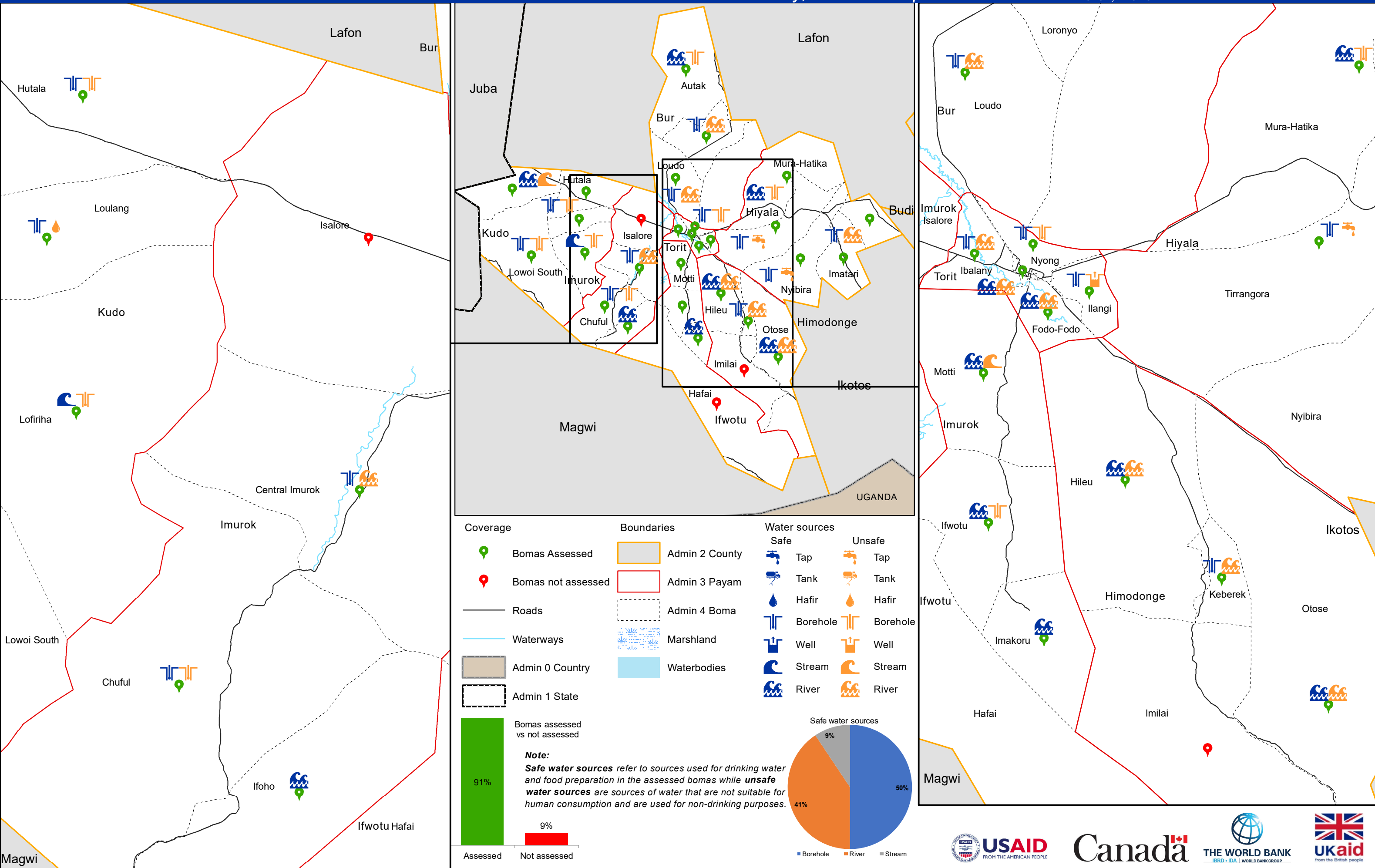
Data Source: IOM/DTM, National Bureau of Statistics, OCHA, Maxar, OpenStreetMap  
Comments & feedback: southsudandtm@iom.int



# Access to Water Sources

Torit County, Eastern Equatoria State

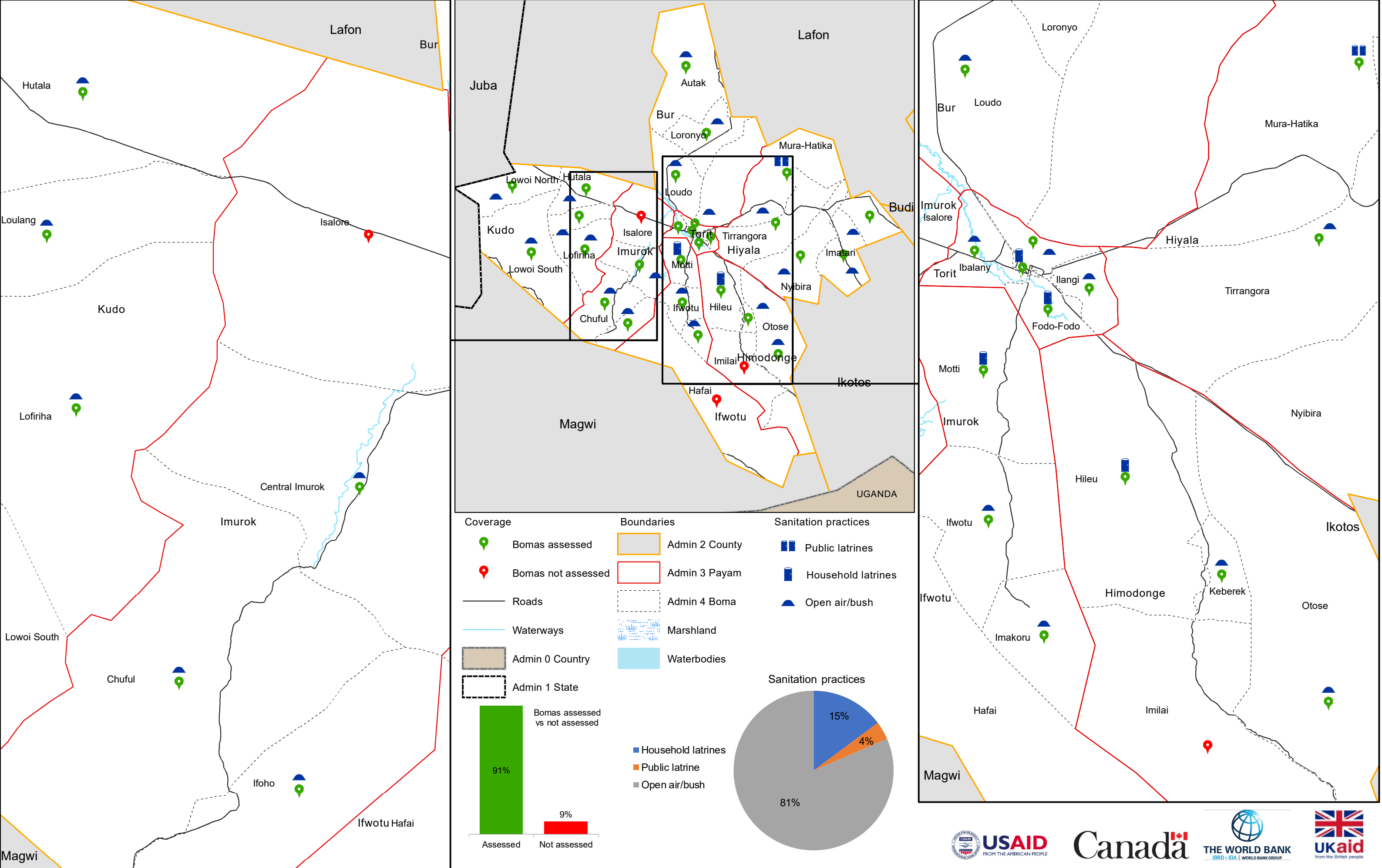
March, 2020



The boundaries on the map do not imply official endorsement or acceptance by the Government of the Republic of South Sudan or by IOM. The map is for planning purposes only. IOM cannot guarantee that the map is error free and therefore accepts no liability for consequential or indirect damages arising from its use.



Data Source: IOM/DTM, National Bureau of Statistics, OCHA, Maxar, OpenStreetMap  
Comments & feedback: southsudandtm@iom.int

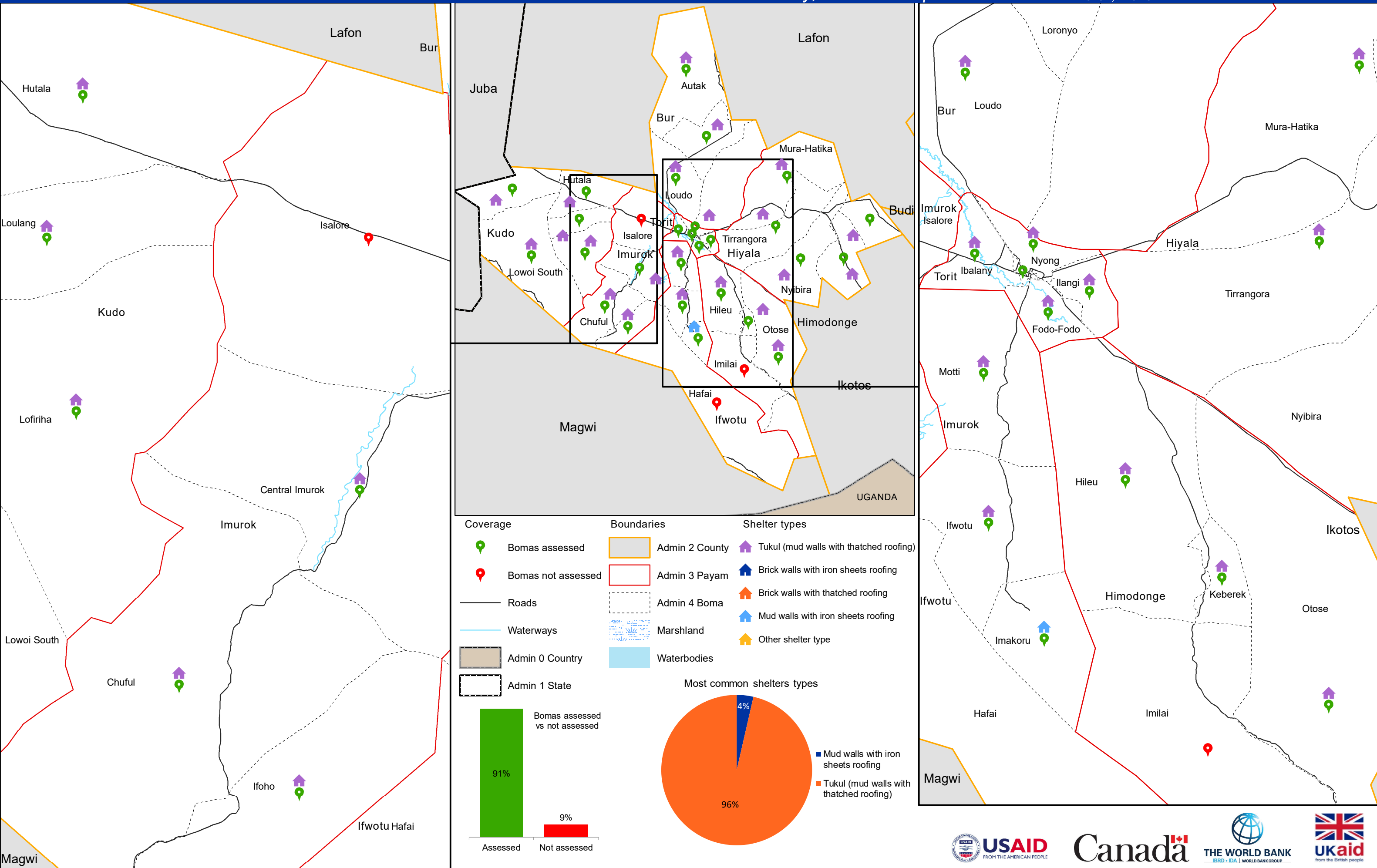




# Most Common Shelter Types

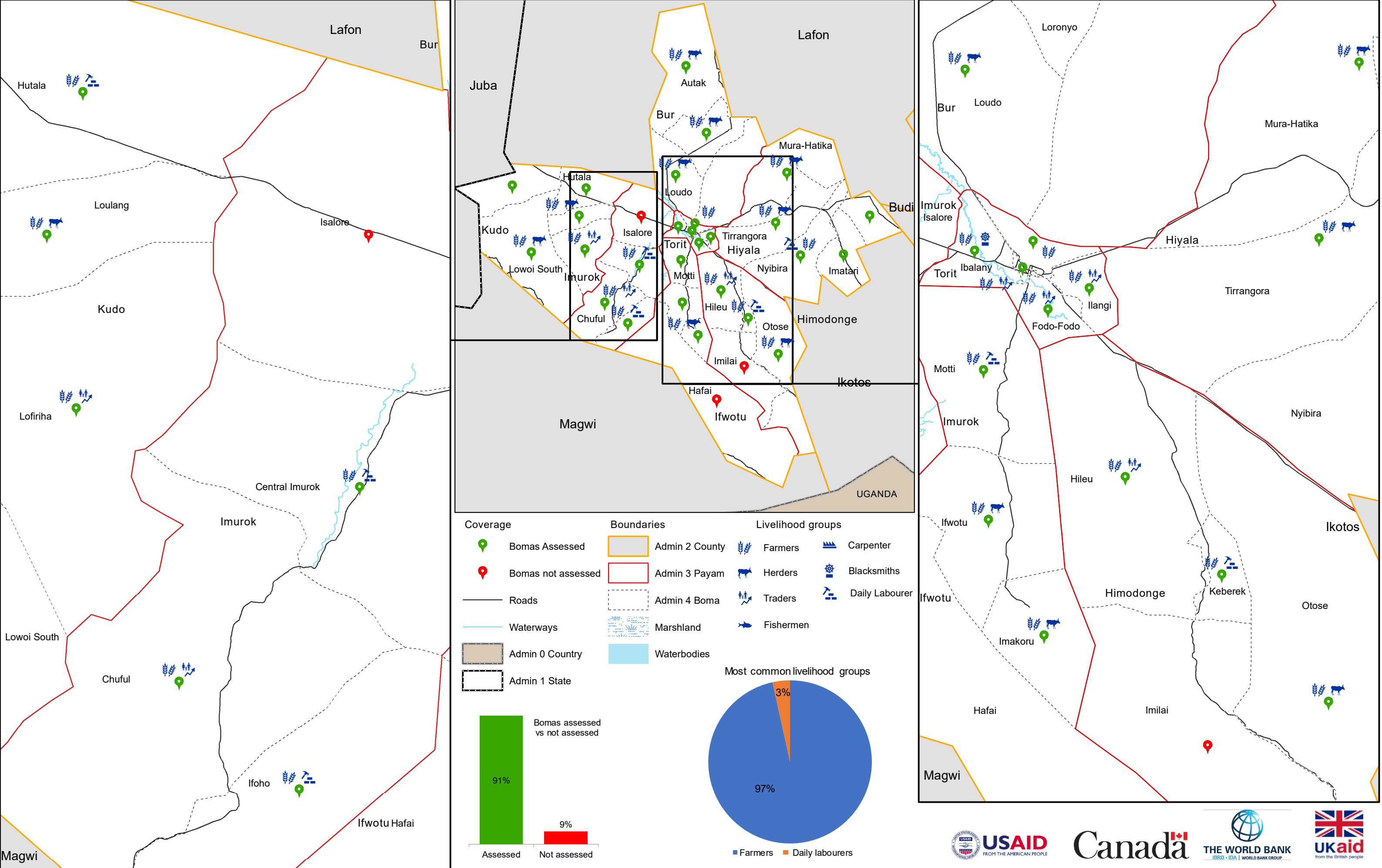
Torit County, Eastern Equatoria State

March, 2020



The boundaries on the map do not imply official endorsement or acceptance by the Government of the Republic of South Sudan or by IOM. The map is for planning purposes only. IOM cannot guarantee that the map is error free and therefore accepts no liability for consequential or indirect damages arising from its use.

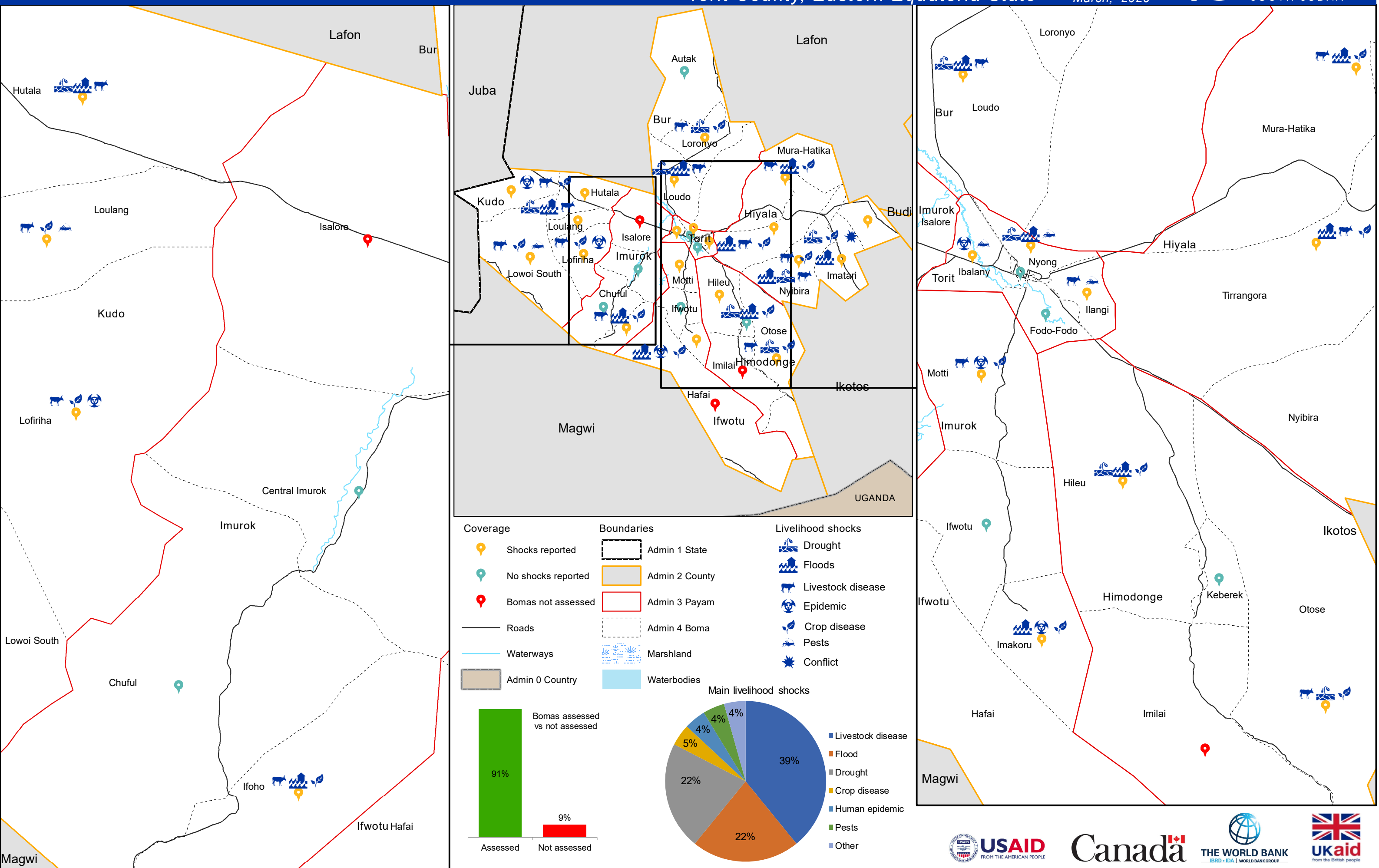




# Top Three Livelihood Shocks

Torit County, Eastern Equatoria State

March, 2020



The boundaries on the map do not imply official endorsement or acceptance by the Government of the Republic of South Sudan or by IOM. The map is for planning purposes only. IOM cannot guarantee that the map is error free and therefore accepts no liability for consequential or indirect damages arising from its use.

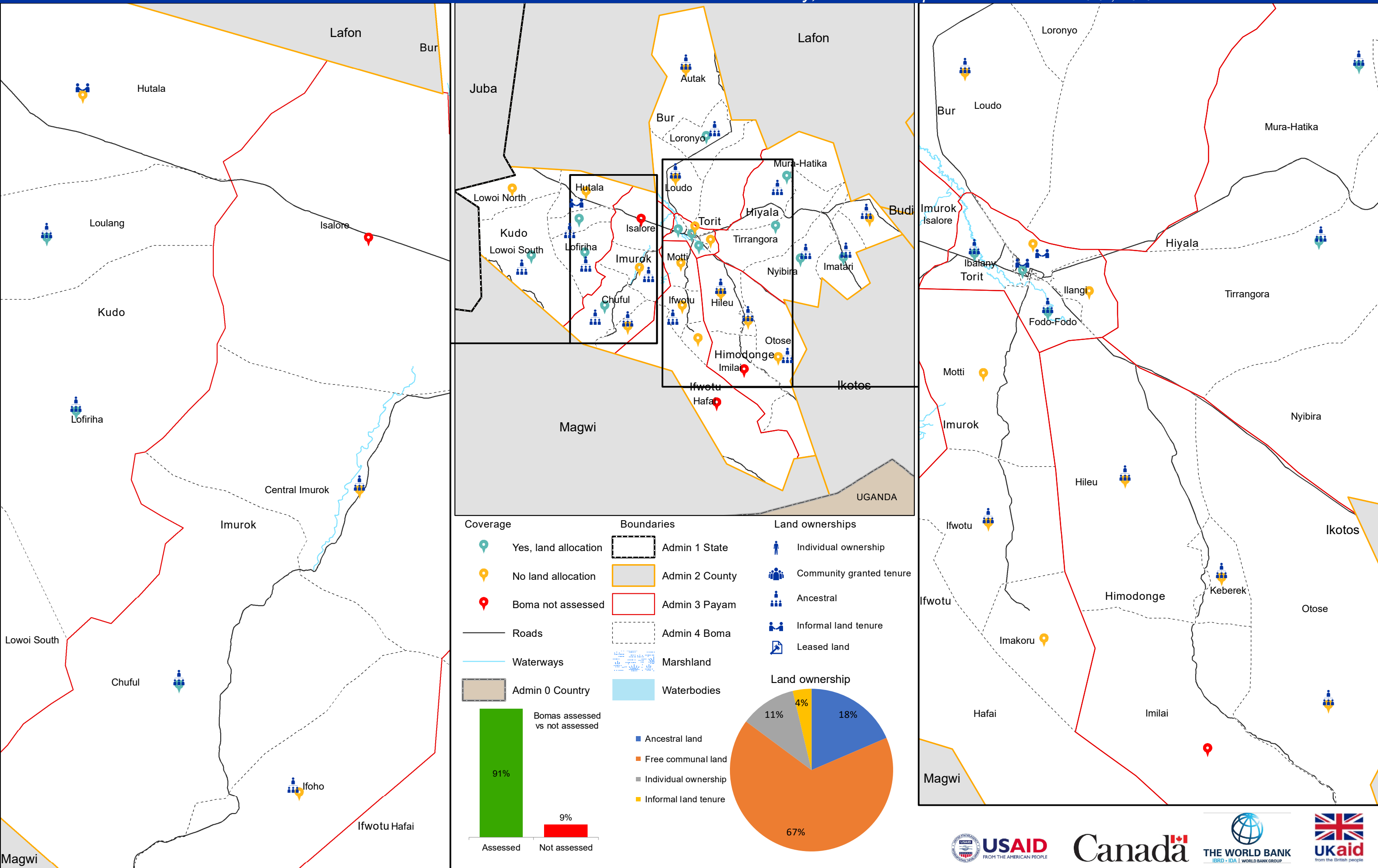




# Land Ownerships and Land Allocations

Torit County, Eastern Equatoria State

March, 2020



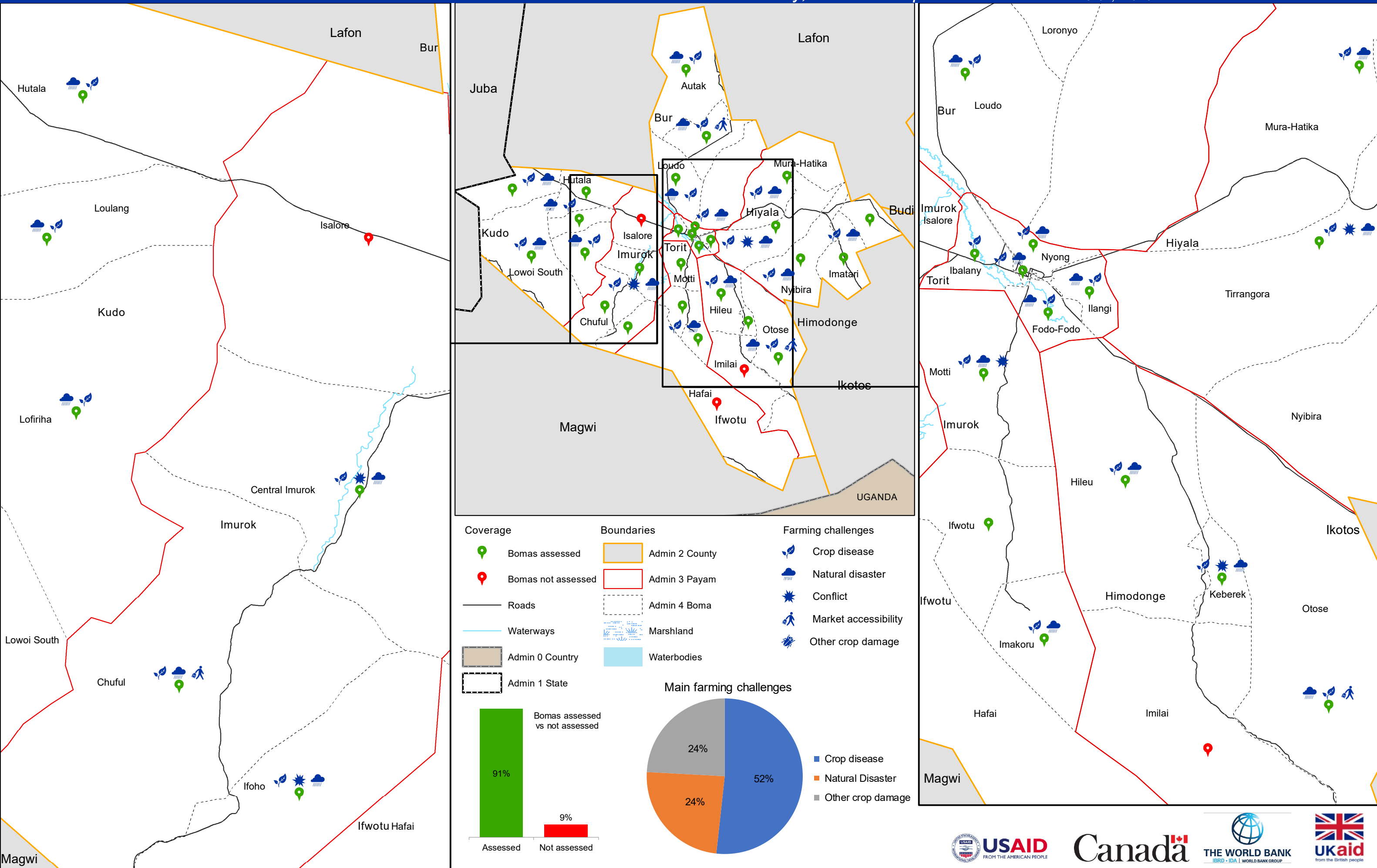
The boundaries on the map do not imply official endorsement or acceptance by the Government of the Republic of South Sudan or by IOM. The map is for planning purposes only. IOM cannot guarantee that the map is error free and therefore accepts no liability for consequential or indirect damages arising from its use.



# Challenges that Affect Farming

Torit County, Eastern Equatoria State

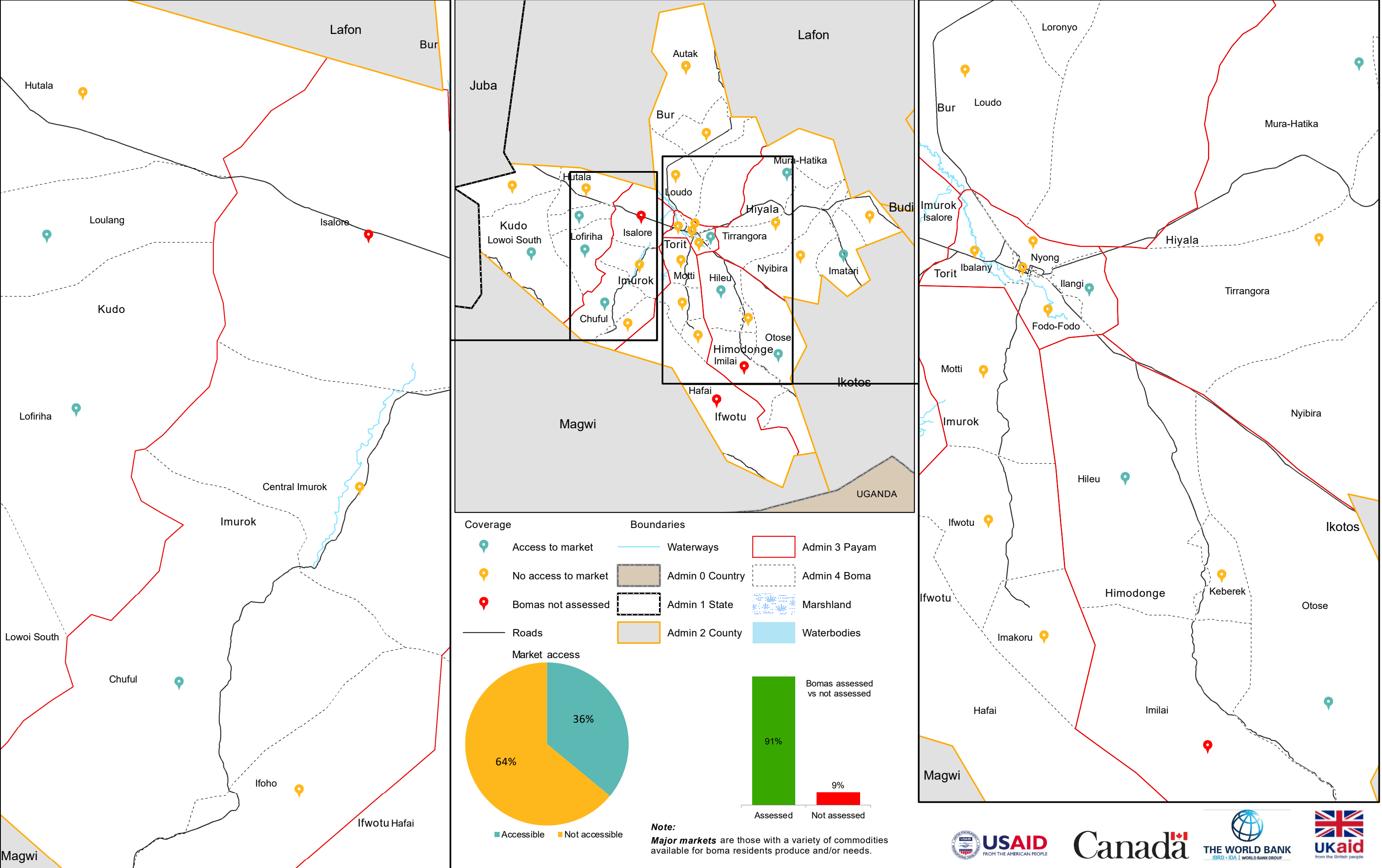
March, 2020



The boundaries on the map do not imply official endorsement or acceptance by the Government of the Republic of South Sudan or by IOM. The map is for planning purposes only. IOM cannot guarantee that the map is error free and therefore accepts no liability for consequential or indirect damages arising from its use.



Data Source: IOM/DTM, National Bureau of Statistics, OCHA, Maxar, OpenStreetMap  
Comments & feedback: southsudandtm@iom.int

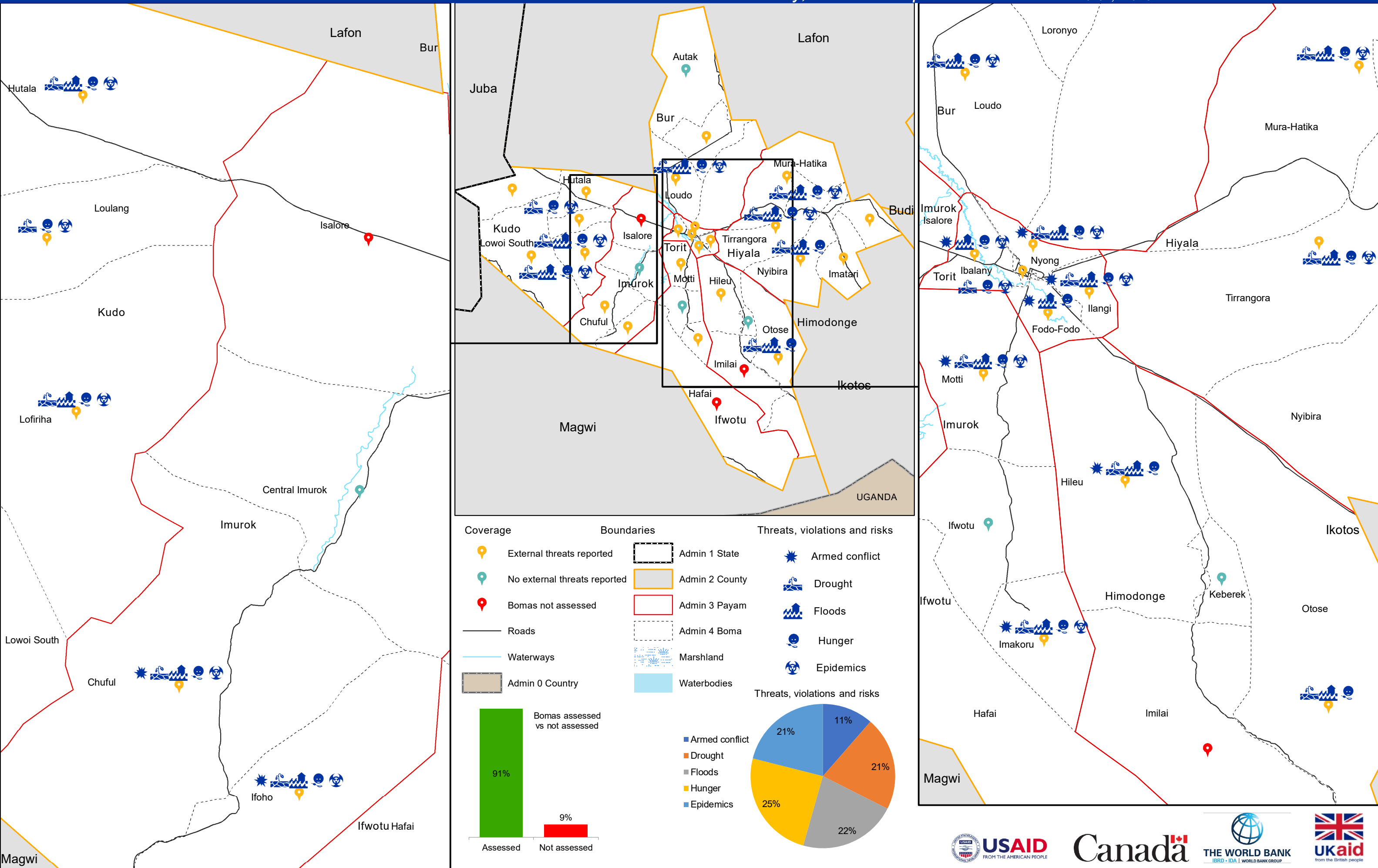




# External Threats, Violations and Risks

Torit County, Eastern Equatoria State

March, 2020



The boundaries on the map do not imply official endorsement or acceptance by the Government of the Republic of South Sudan or by IOM. The map is for planning purposes only. IOM cannot guarantee that the map is error free and therefore accepts no liability for consequential or indirect damages arising from its use.



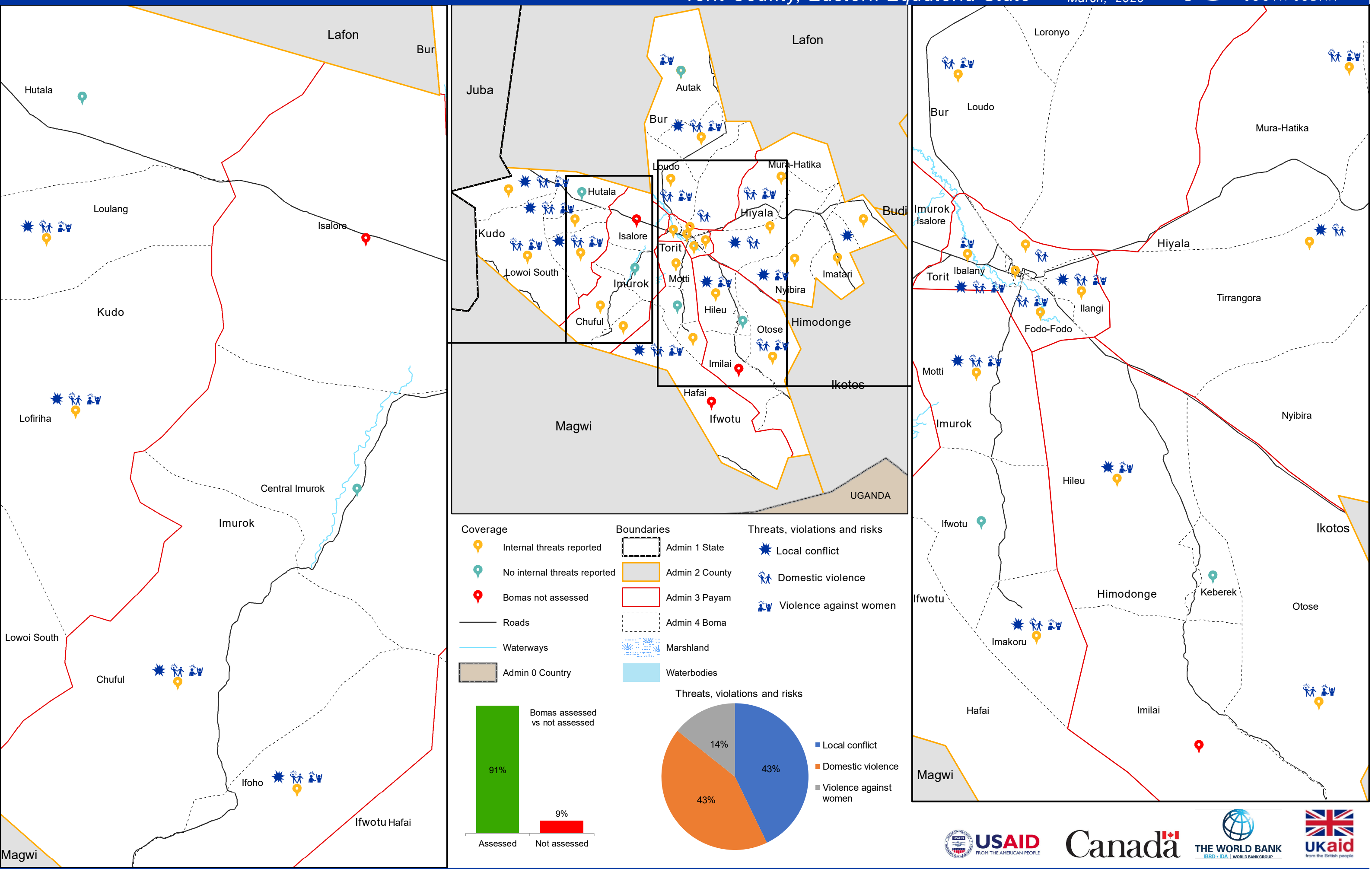
Data Source: IOM/DTM, National Bureau of Statistics, OCHA, Maxar, OpenStreetMap  
Comments & feedback: southsudandtm@iom.int



# Internal Threats, Violations and Risks

Torit County, Eastern Equatoria State

March, 2020



The boundaries on the map do not imply official endorsement or acceptance by the Government of the Republic of South Sudan or by IOM. The map is for planning purposes only. IOM cannot guarantee that the map is error free and therefore accepts no liability for consequential or indirect damages arising from its use.



