

(C) IOM2017
IOM Staff (in Blue) conducting RICA
inside the evacuation center in Iligan City



International Organization for Migration

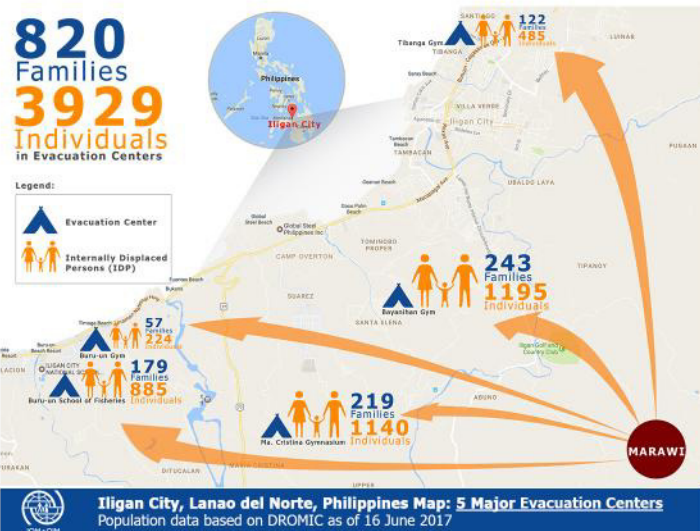
Displacement Tracking Matrix

Marawi Crisis | 16 June 2017

DTM Assessment Summary Result: 5 ECs in Iligan City

Site Management	Shelter
100% of the sites are managed by various government agencies	80% of the sites are safe from natural hazards
100% of the sites have site management committees	100% of the sites have safe on site cooking counters
100% of the sites have its residents registered using DAFAC	100% of the sites have electricity on site
100% of the sites have agencies providing camp management support services	0% of the sites have privacy partitions
Food	WASH
100% have recent food distributions	80% have onsite sources of drinking water
100% have existing supplemental feeding for children	80% have safe drinking water
100% have existing supplemental feeding for lactating/pregnant women	100% have drinking water containers for each family
100% had malnutrition screening	100% have hygiene promotion conducted
	100% have their garbage collected from the site
	80% have working drainage system
	0% have sufficient number of latrines based on sphere standard of 1:20 unit to person ratio
Health	Education
100% of the sites have referral system in place	40% of the sites have temporary learning space
100% have available health services in the site	20% have any informal education activities being conducted at the site
100% have psychosocial health services provided to the site	40% of the sites have all their students able to continue their studies after the displacement
Protection	Protection Facilities/Services
80% have no protection incidents reported since last survey	80% of sites have Women Friendly Spaces
100% have 24 hour security available	60% of sites have Child Friendly Spaces
60% of the sites had VAW-CP awareness session conducted	60% of sites have Breastfeeding Areas
80% have confidential VAW services available	0% of the sites have facilities modified for PWD
40% of the sites have referral pathway information posted	

The Displacement Tracking Matrix (DTM) is an information management tool used by the CCCM Cluster to gather baseline information on displaced populations and the conditions in the areas where they have temporarily settled. The DTM has been rolled out in over 30 countries including Haiti, Pakistan, Mali, The Democratic Republic of Congo and the Philippines. DTM was first rolled out in the Philippines in 2009 to support response efforts following Typhoon Ketsana.



Gaps/Issues in Iligan City's 5 Evacuation Centers

Site Management:

- Lack of trained camp managers familiar with minimum camp SPHERE standards and skilled in coordination and referral of camp needs to appropriate service providers.
- There are Camp Managers present in the evacuation centers but their time is consumed in relief distribution and cannot focus on profiling of IDPs.

Shelter:

- Overcrowded evacuation centers.
- No privacy partitions installed in living spaces of IDPs in evacuation centers.

WASH:

- The City Health Office found out that there is a presence of E.Coli in Tibanga Gym evacuation center's tap water which makes it unsafe for drinking.
- No drainage system in Buru-un School of Fisheries evacuation center
- Insufficient latrines in all evacuation centers.

Education:

- No Temporary Learning Spaces in Buru-un School of Fisheries, Ma. Cristina Gymnasium, and Tibanga Gym evacuation centers.
- No informal education has been conducted in all evacuation centers other than in Buru-un Gym.
- Not all of the students in Buru-un Gym, Buru-un School of Fisheries, and Ma. Cristina Gymnasium evacuation centers were able to continue their studies since their parents are afraid to send them to school due to security reasons.

Protection:

- There has been a reported protection incident in Bayanihan Gym evacuation center in Barangay Sta. Elena since home-based IDPs complained about the uneven distribution of assistance and the relief, accordingly, is just in favor of the IDPs inside evacuation sites.
- No VAW-CP awareness sessions conducted in Bayanihan Gym and Tibanga Gym evacuation centers. Moreover, confidential VAW services weren't available in Tibanga Gym since it is expected to close soon.
- No protection referral pathway information posted in Bayanihan Gym, Buru-un School of Fisheries, and Tibanga Gym evacuation centers.



Name of Displacement Site	No. of Families	No. of Persons	Site Management				Shelter			
			Site Managed (by Govt Agency)	Site Management Committees	DAFAC	Agencies providing CMSS	Safe from Natural Hazards	Safe On-Site Cooking Counters	On-Site Electricity	Privacy Partitions
Bayanihan Gym, Brgy. Sta. Elena	243	1195	Yes	Yes	Yes	Yes	Yes	Yes	Yes	No
Buru-un Gym, Brgy. Buru-un	57	224	Yes	Yes	Yes	Yes	Yes	Yes	Yes	No
Buru-un School of Fisheries, Brgy. Buru-un	179	885	Yes	Yes	Yes	Yes	Yes	Yes	Yes	No
Ma. Cristina Gymnasium, Brgy. Ma. Cristina	219	1140	Yes	Yes	Yes	Yes	Yes	Yes	Yes	No
Tibanga Gym, Brgy. Tibanga	122	485	Yes	Yes	Yes	Yes	No	Yes	Yes	No
TOTAL	820	3929	5	5	5	5	4	5	5	0
Percentage			100%	100%	100%	100%	80%	100%	100%	0%

Name of Displacement Site	No. of Families	No. of Persons	Food				WASH			
			Recent Food Distribution	Supplemental Feeding for Children	Supplemental Feeding for Pregnant/Lactating	Malnutrition Screening	Source of Drinking Water	Safe-Drinking Water	Drinking Water Containers	Hygiene Promotion Conducted
Bayanihan Gym, Brgy. Sta. Elena	243	1195	Yes	Yes	Yes	Yes	On Site	Yes	Yes	Yes
Buru-un Gym, Brgy. Buru-un	57	224	Yes	Yes	Yes	Yes	Off Site	No	Yes	Yes
Buru-un School of Fisheries, Brgy. Buru-un	179	885	Yes	Yes	Yes	Yes	On Site	Yes	Yes	Yes
Ma. Cristina Gymnasium, Brgy. Ma. Cristina	219	1140	Yes	Yes	Yes	Yes	On Site	Yes	Yes	Yes
Tibanga Gym, Brgy. Tibanga	122	485	Yes	Yes	Yes	Yes	On Site	Yes	Yes	Yes
TOTAL	820	3929	5	5	5	5	4	4	5	5
Percentage			100%	100%	100%	100%	80%	80%	100%	100%

Name of Displacement Site	No. of Families	No. of Persons	WASH				Health			
			Garbage Collected from Site	Drainage System Working Properly	Sphere Standards for Latrines		Referral System in Place	Health Services available	Psychosocial health services provided	
Bayanihan Gym, Brgy. Sta. Elena	243	1195	Yes	Yes	No		Yes	Yes	Yes	
Buru-un Gym, Brgy. Buru-un	57	224	Yes	Yes	No		Yes	Yes	Yes	
Buru-un School of Fisheries, Brgy. Buru-un	179	885	Yes	No	No		Yes	Yes	Yes	
Ma. Cristina Gymnasium, Brgy. Ma. Cristina	219	1140	Yes	Yes	No		Yes	Yes	Yes	
Tibanga Gym, Brgy. Tibanga	122	485	Yes	Yes	No		Yes	Yes	Yes	
TOTAL	820	3929	5	4	0		5	5	5	
Percentage			100%	80%	0%		100%	100%	100%	

Name of Displacement Site	No. of Families	No. of Persons	Education				Protection				
			Temporary Learning Space	Informal Education Conducted	All Students were able to continue studies		Absence of Protection incidents since	24 hr Security Available	VAW-CP Awareness session	Confidential VAW services Available	Referral Pathway information Posted in the Site
Bayanihan Gym, Brgy. Sta. Elena	243	1195	Yes	No	Yes		No	Yes	No	Yes	No
Buru-un Gym, Brgy. Buru-un	57	224	Yes	Yes	No		Yes	Yes	Yes	Yes	Yes
Buru-un School of Fisheries, Brgy. Buru-un	179	885	No	No	No		Yes	Yes	Yes	Yes	No
Ma. Cristina Gymnasium, Brgy. Ma. Cristina	219	1140	No	No	No		Yes	Yes	Yes	Yes	Yes
Tibanga Gym, Brgy. Tibanga	122	485	No	No	Yes		Yes	Yes	No	No	No
TOTAL	820	3929	2	1	2		4	5	3	4	2
Percentage			40%	20%	40%		80%	100%	60%	80%	40%

Name of Displacement Site	No. of Families	No. of Persons	Protection Facilities/ Services			
			WFS	CFS	BF Area	Facilities Modified for PWD
Bayanihan Gym, Brgy. Sta. Elena	243	1195	Yes	Yes	No	No
Buru-un Gym, Brgy. Buru-un	57	224	No	No	No	No
Buru-un School of Fisheries, Brgy. Buru-un	179	885	Yes	Yes	No	No
Ma. Cristina Gymnasium, Brgy. Ma. Cristina	219	1140	Yes	No	Yes	No
Tibanga Gym, Brgy. Tibanga	122	485	Yes	Yes	Yes	No
TOTAL	820	3929	4	3	2	0
Percentage			80%	60%	40%	0%



Crowded evacuation center lacking privacy partitions in living spaces.



Lack of proper drainage system.



Latrines needing regular dislodging.



Camp managers in need of CCCM training.

For queries, please contact:

Mr. Conrado Navidad, Jr.
National CCCM Program Officer - IOM Philippines
E-mail: cnavidad@iom.int

Mr. Marco Boasso
Chief of Mission - IOM Philippines
E-Mail: mboasso@iom.int