

DTM&Partners Cooperation in Comics!

DTM MSLA is being rolled out in a crisis-affected country. The new DTM coordinator arrives to the office...

Welcome! I am part of the DTM Team. We need your help rolling out the Multi Sectoral Location Assessment!

Good to be here! Tell me, how far did you come with planning for the MSLA?

We did a risk assessment and identified modalities to minimize risks during the exercise. We explained to the authorities what DTM MSLA is and got their green light. Through the Baseline Assessments, we now know areas and locations where IDPs are. We are recruiting more enumerators for the MSLA and staff for data analysis.

DTM MSLA = Multi Sectoral Location Assessment collects sectoral and intersectoral information per each location, usually through Observation & Interviews with Key informants who are not sectoral experts (see: <https://displacement.iom.int/dtm-partners-toolkit/what-dtm>)

Very good! Do we have a good understanding of what the humanitarian community needs to know? Are we sure MSLA through Key Informants and Observation is the appropriate tool for that?

Well, the usual: how many people are displaced, where they are exactly living, who is displaced, for what reasons, and what basic goods and services people are now missing!

Do we know who else is collecting data, what they collect and where?

Not yet, but we asked OCHA to organize an Information Management working group meeting for later today.

Well done! We should find out what information gaps there are and who is planning to collect data.

OCHA chairs the Information Management WG (IMWG) in responses where Clusters are activated. If OCHA is not present or does not have this role in your response, replace OCHA with whatever Organization or Authority has this role (e.g., Government, UNHCR, IOM).

Later that day, after a useful IMWG meeting...

We now have confirmation of what info are needed. Earlier you listed the main info needs quite accurately!

Yes, but we also realized that some more info are needed by various sectors. I think we can fill some of them through the MSLA!

Agreed, let us consider all the info one by one, and include in our Data Analysis Plan those we can collect through key informant interviews and observation, at location level.

And then we can check if the DTM Field Companion* has suggested question phrasing for some of the information we need. They are recommended for MSLA by Global Clusters and other experts.

A Data Analysis Plan links information needs, questions & analysis and documents how data will be used: <https://displacement.iom.int/dtm-partners-toolkit/analysis>

*DTM Field Companion should be adjusted to the context: <https://displacement.iom.int/dtm-partners-toolkit/field-companion-sectoral-questions-location-assessment>

Selecting the information that can be collected through MSLA takes a few hours of focused work. The DTM Field Companion is useful for developing the appropriate phrasing for many questions & time is saved using the existing mock-ups!

Mock-ups



According to key informants xx% of sites have ... In xx sites, ...

Excellent work! Let's now check that our questions DO NO HARM. We can verify each question with Protection & colleagues who understand this context & culture*.

The day after, Protection colleagues & colleagues who know the Context&Culture help DTM with Do No Harm analysis.

Thanks for your help! Before we collect data, we must consider if each question puts at risk 1)enumerators, 2)interviewees, 3)population and 4)our organization. What negative consequences may they face when data are collected, stored, analysed and disseminated?

The Do No Harm Checklist* can help us. If the planned use does not justify the likely risk, we should modify the question, or even delete it.

Who is put at increased risk?	Because of Data Collection	Because of Data Storage	Because of Data Analysis	Because of Data or Reports Sharing (currently)
Enumerators				
Key informants				
Displaced community				
Host Community				
Organization				
Others				

*Checklist: <https://displacement.iom.int/dtm-partners-toolkit/field-companion-sectoral-questions-location-assessment>

Now risk is assessed and questions are adjusted to DO NO HARM...

We can now share the Analysis Plan with IMWG and sectors, and they will know what information they can receive from us, how & how frequently. So they start searching elsewhere for data we cannot collect!

Enumerators are trained, also with the support of protection colleagues...

You do not ask about protection incidents: but you go to places where no other humanitarian have been, and somebody may tell you about an incident.

So, what do you do in case you receive a "disclosure"? And what is the referral system?

Do not ask for more information on the incident but explain the available services to the person. Protection Sector has a referral system* & you will get a copy...

There you will find guidance on how to refer people as well as up-to-date contact details of the relevant focal point in your area.

Guidelines:
<https://displacement.iom.int/dtm-partners-toolkit/data-sharing>

DTM team has worked hard to organize the content, the admin & the logistics of the exercise. Enumerators have been trained and are now in the field collecting information.

In the meantime, the DTM team plans their engagement with partners for the next phase!

Who do we start with? Who are crucial Partners in this response?

DTM Partners are all humanitarian actors organizations, institutions and groups who use DTM data for humanitarian response. They have different information needs.

The Governmental Emergency Response Cell, CCCM sector and OCHA!

Always wise to engage first with those coordinating!
 CCCM=Camp Coordination and Camp Management

From what I hear in the situation updates at the inter-sectoral meetings, Child Protection, Mine Action & GBV are also looking for info to plan their response. Should we see if they need help collecting some of the data they miss?

GBV=Gender Based Violence

Sure! Let us ask who needs our help when we present the results of this round to the ISCG and IMWG.

ISCG = Inter Sectoral Coordination Group (or the group that leads the coordination of the inter-sectoral response in your context). IMWG = Information Management Working Group

As data are collected. DTM processes them and conducts a descriptive analysis.

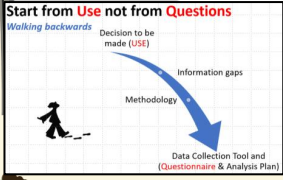
A few days later, DTM Coordinator presents results to Inter-agency and Inter-sectoral fora, clearly explaining coverage and access restrictions.

Now you have seen the results of the initial round. Data were collected from KI who are not sectoral specialists, during the first 2 weeks of the month. You will find them on our website. If MSLA can collect some data you need, let us know: we'll try to include them to help your decision-making.

KI = Key Informants

As the meeting continues, DTM explains how to cooperate

DTM, global clusters and other partners developed an approach on how to get useful and usable data. You start: you identify the information you need and for what specific use. At that point, we jointly develop questions and an analysis plan.



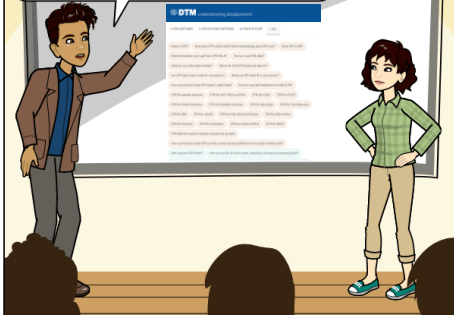
Analysis Plan

Question	Response	Analysis	Response	Analysis	Response	Analysis
Q1	R1	A1	R2	A2	R3	A3
Q2	R4	A4	R5	A5	R6	A6
Q3	R7	A7	R8	A8	R9	A9
Q4	R10	A10	R11	A11	R12	A12
Q5	R13	A13	R14	A14	R15	A15
Q6	R16	A16	R17	A17	R18	A18
Q7	R19	A19	R20	A20	R21	A21
Q8	R22	A22	R23	A23	R24	A24
Q9	R25	A25	R26	A26	R27	A27
Q10	R28	A28	R29	A29	R30	A30

<https://displacement.iom.int/dtm-partners-toolkit/analysis>

An Analysis plan links the data to its use and question... it is necessary to ensure DTM collects the data that Partners need (and not data that will not be used!)

We gave you a 2-pager handout with more info on how we can help. You can look at the DTM&Partners Toolkit, jointly created by DTM, Global Clusters and other experts.

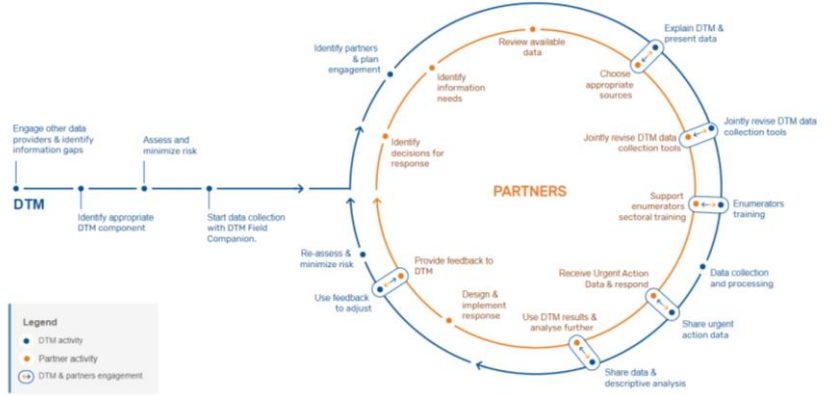


<https://displacement.iom.int/dtm-partners-toolkit/guide>

And these are our contact details. Let us know if we can help!



DTM & Partners Planning together

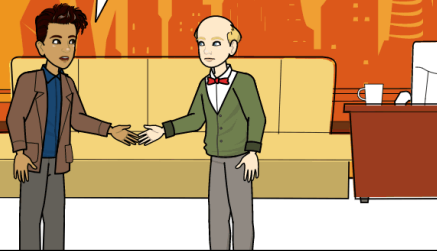


DTM & Partners Toolkit: <https://displacement.iom.int/dtm-partners-toolkit/steps>

DTM&Partners engage for Useful and Usable Data

The next day, at the Governmental Emergency Response Cell...

Thank you for finding the time to meet. DTM is continuing data collection in the all affected areas, and we were wondering if we can provide you specific information for better coordinate the response.



We need to know how many of the IDP children are vaccinated!



Information Needs have been very clearly identified!

MSLA asks questions to Key Informants, who would not be able to give useful answers on this. Health experts recommend using vaccination records & asking households.



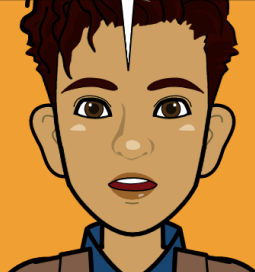
But we do not have the resources for a HH-level data collection... and we do not know where families from each location have gone!

You could use some data from DTM MSLA: estimated number of children in each location, where the IDPs come from, the distance of communities to health centre and also problems they face in accessing healthcare.

Mmmh... how could I use that?



You could use your Health Ministry information on vaccination coverage in the locations of origin of IDPs to understand whether or not a new campaign is necessary. You can use the number of children and the healthcare information to organize any needed vaccination campaign. Of course we will share the coordinates and name of each location.



OK, then! That would be useful. When and how will we receive the data?



This data is already available: I will send you the link to the DTM website where you will find all publicly available data, and you will also see that we update the dataset regularly, at each round.

Very good. Thank you!

<https://displacement.iom.int>

In the meantime, DTM also meets the Child Protection and Mine Action sectors' coordinators...

Hello! Thanks for organizing this meeting on your information needs & identify what DTM MSLA may be able to collect for you.

Happy to see you, but I am not sure why we had to meet for this. CP sector has 5 questions to add to the questionnaire, and I can simply send them to you.

Identifying the info we need to make decisions is important to ensure that we get data we can use. After that, we can work together with DTM to phrase the questions that work in this context.

But an information need IS a question, no?

Yes and No! An info need is not a question you put in the questionnaire. It is the information you need to make decisions for your response.

..While the "question" is one of many possible ways and phrasings to get that information

For example, Mine Action sector colleagues need to prioritize areas for intervention. We need to know where people face high risk from Explosive Ordnance!

And DTM can give you information to help make that decision: for example, where communities moved to, how many people live in each location, where EO incidents are reported..

CP, MA and DTM just illustrated how to start from a Decision (the use) and identify the information needed to make that decision, before developing questions.

Start from Use not from Questions

Walking backwards

CP = Child Protection; MA = Mine Action; EO = Explosive Ordnance (e.g., mines)

Now we phrase the questions! There are many ways to obtain a piece of information: we choose the most effective way, considering for example method of data collection, age and expertise of the person who will answer it ...

..And considering the cultural sensitivities of the context... we need to be mindful of the potential harm!

Review each question before using it, so to DO NO HARM! You can use the Do No Harm Checklist* on the DTM&Partners Toolkit.

Who is put at increased risk?	Because of Data Collection	Because of Data Storage	Because of Data Analysis	Because of Data or Reports Sharing (currently)
Enumerators				
Key Informants				
Displaced community				
Host Community Organization				
Others				

*Checklist: <https://displacement.iom.int/dtm-partners-toolkit/guide/how-can-we-do-no-harm-when-collecting-storing-sharing-and-analysing-data>

This also means that it may take two or three questions to provide me one piece of information...

Exactly! You see now why you, the response actor, must identify the precise information you need and for what use, before we phrase the questions together!

Yes, so that we know how it will all come together in the analysis, BEFORE we send enumerators to the field!

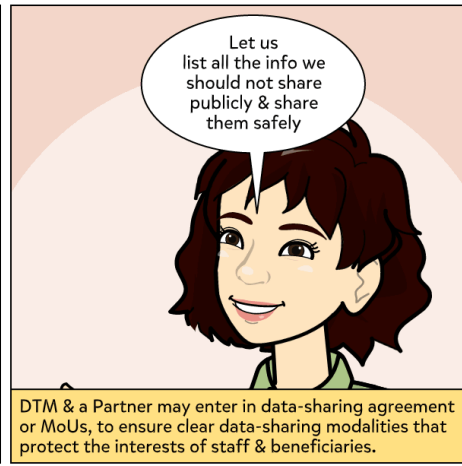
Which means... we better get down to work now!

Mock-Ups:
illustrate end results

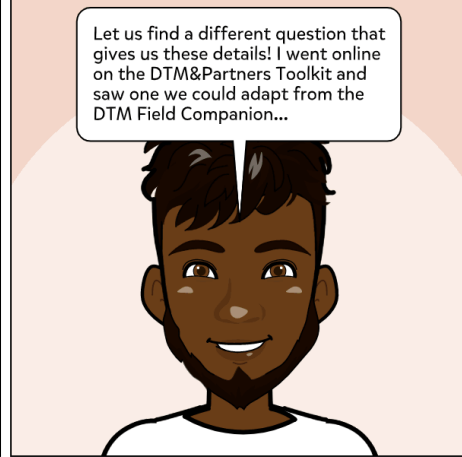
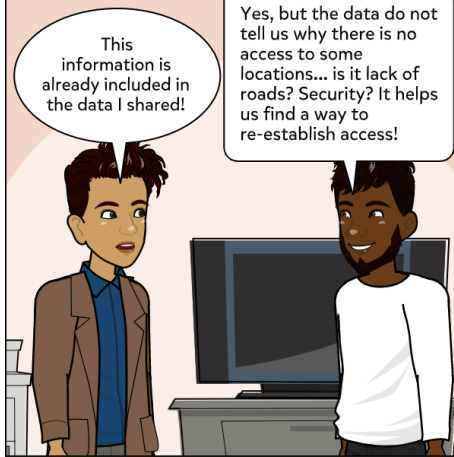
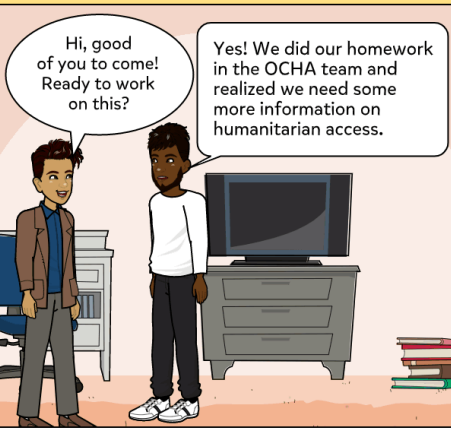


DTM & sectoral experts work together & soon questions are ready! Questions are included in the Analysis Plan, adding a description of results done with fake data. CP & MA colleagues use that simulation (Mock-Up) to ensure that they can use the data they will receive.

It is important to plan how to share data before collecting them!

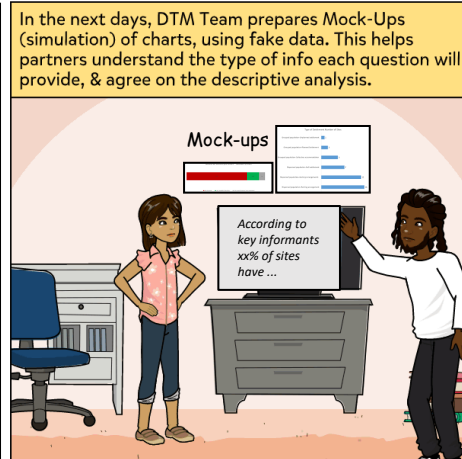
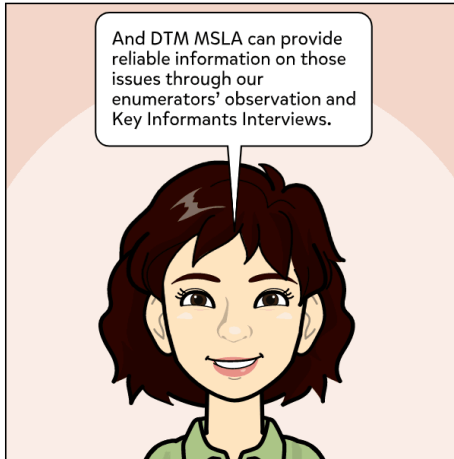
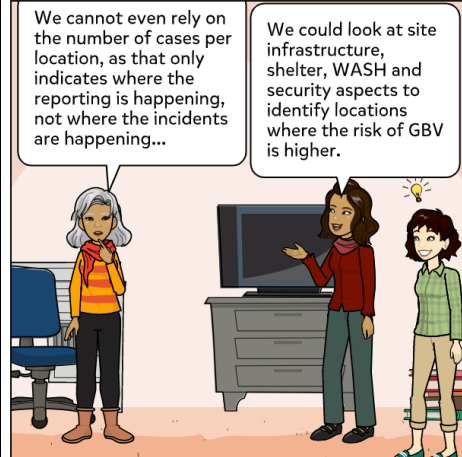
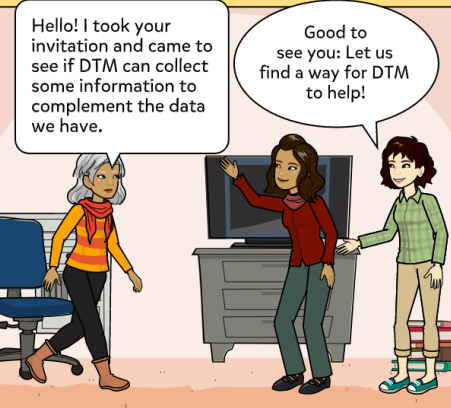


Later that week, OCHA IMO comes to the DTM office...



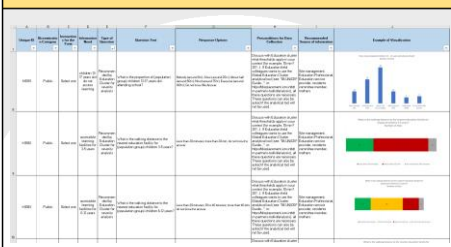
<https://displacement.iom.int/dtm-partners-toolkit/field-companion-sectoral-questions-location-assessment>

At the same time, the GBV AoR coordinator meets DTM & CCCM colleagues.



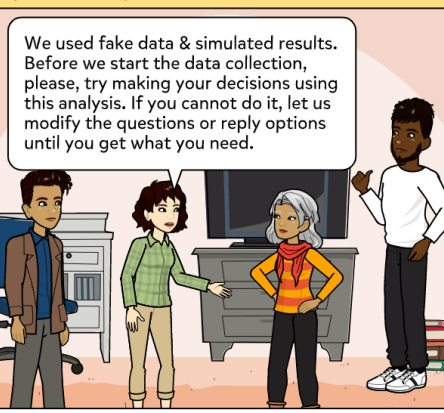
GBV = Gender Based Violence; AoR = Area of Responsibility (Sub-Cluster)
CCCM=Camp Management Camp Coordination;

DTM Field Companion includes Mock-Ups of results, in the forms of charts and narrative.

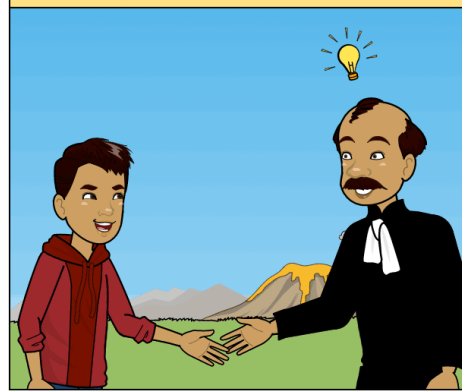


<https://displacement.iom.int/dtm-partners-toolkit/field-companion-sectoral-questions-location-assessment>

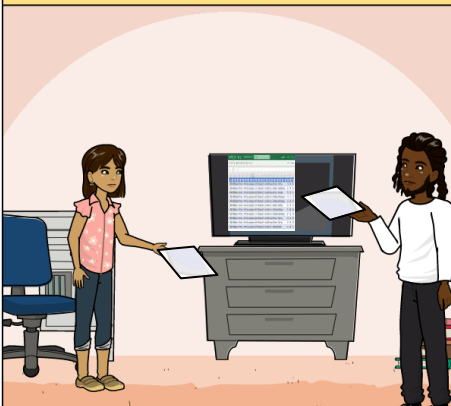
Before collecting data, DTM asks partners to verify the questions will give the needed information!



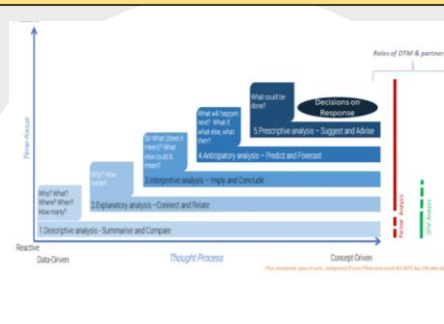
When questions are verified, enumerators are trained on new questions & key definitions with Partners' support. They can now go back in the field!



... and DTM Team in the office receives, cleans, processes and verifies data!

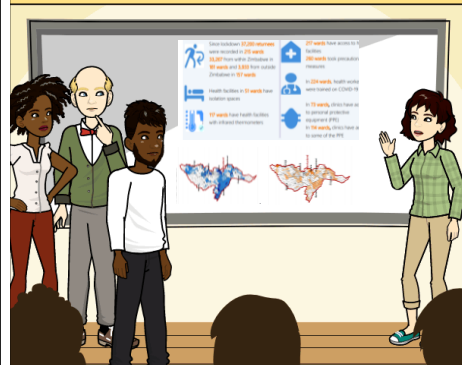


DTM & Partners agreed that DTM will provide some descriptive analysis, while explanation, interpretation and response planning are the task of Partners!



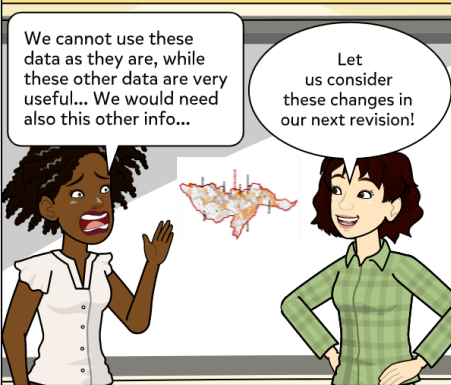
<https://displacement.iom.int/dtm-partners-toolkit/analysis>

DTM presents descriptive analysis to interested partners and coordination fora (HCT, ISCG, IMWG...), so to increase their use of data and promote interpretation and response planning!



HCT = Humanitarian Country Team, a strategic and operational decision-making and oversight forum. If you work in an emergency without cluster activation, interpret HCT as the group /actor/actors holding that mandate, and adapt as appropriate.
 ISCG = Inter Sectoral Coordination Group; IMWG Information Management Working Group

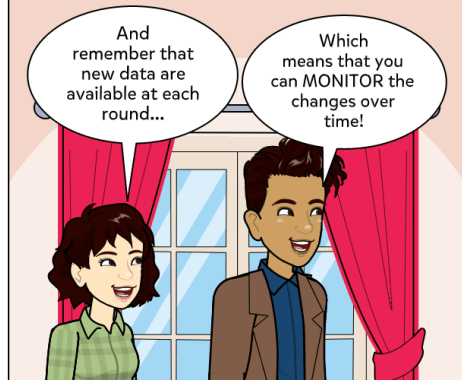
These meetings are also great opportunities for DTM to immediately verify what data are useful and what should be modified.



DTM has given us quite useful data!
 Now we analyse them further, using our sector's info & other secondary data.
 And we can plan our response based on a joint understanding of the situation!

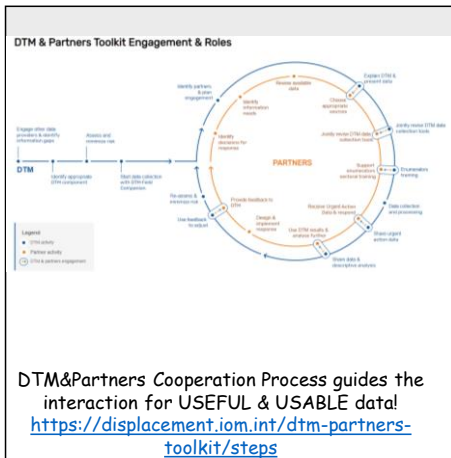


After all this work, Partners safely receive data they understand and CAN USE & use them to better respond to people's needs.



DTM MSLA provides information for monitoring situation changes over time.

...To be continued, by DTM & Partners in the Field!



Approach, Roles & Guiding Questions for Data you can use

DTM & Partners Cooperation Guide

DTM & Partners Toolkit contains tools to help DTM teams and Partners in the Field (Clusters, Sectors, WGs, NSCs, International Organizations, Authorities, UN agencies, IOM Programmes, ...) jointly obtain usable and useful data and analysis.

The proposed approach and tools were not developed in isolation, but rather based on best practices in the humanitarian sector and developed through consultations with DTM, Global Cluster (A&W) and other partners.

In this document, 'Partner' is intended as any organization, group or individual that uses DTM data for humanitarian response including Clusters, Sectors, Working Groups, A&W, National, Regional and local authorities, individual NGOs, UN agencies, IOM programmes and others.

A handy pocket guide is also available, jointly developed by DTM & Partners!
<https://displacement.iom.int/dtm-partners-toolkit/predictable-approach>

DTM Toolkit Guide

And the answers to most common questions can be found online: <https://displacement.iom.int/dtm-partners-toolkit/guide>