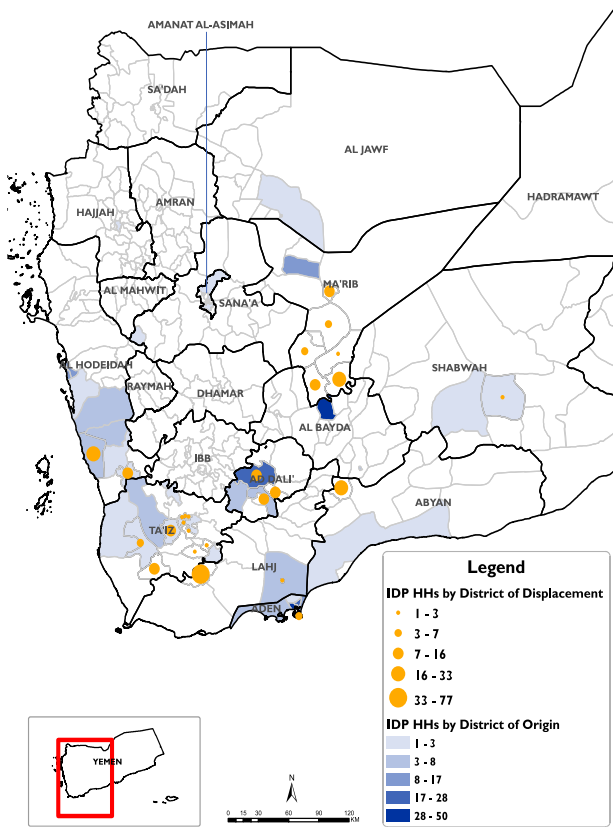


# RAPID DISPLACEMENT TRACKING (RDT)

Reporting Period : 21 - 27 Jun 2020

Published on: 28 June 2020

## Displaced Households by District of Displacement and Origin



\*Based on data collected during 21 - 27 Jun, 2020

## Number of Displaced Households (IDP HHs) per Governorate

Governorate	IDP HH Displaced during the week 21 to 27 Jun	IDP HH who left displaced location within the week	Total IDP HH 01 Jan to 27 Jun
Hajjah	N/A	N/A	N/A
Al Dhale'e	35	8	1,729
Al Hudaydah	43	0	1,066
Taizz	46	0	1,439
Amnat Al Asimah	N/A	N/A	N/A
Ibb	N/A	N/A	N/A
Marib	65	0	8,433
Amran	N/A	N/A	N/A
Sana'a	N/A	N/A	N/A
Shabwah	2	0	533
Lahj	80	0	800
Aden	4	91	31
Sa'ada	N/A	N/A	N/A
Abyan	27	0	658
Dhamar	N/A	N/A	N/A
Hadramaut	0	0	1,011
Al Bayda	0	0	135
Al Jawf	0	0	211
Raymah	N/A	N/A	N/A
Al Mahwit	N/A	N/A	N/A
Socotra	0	0	0
Al Maharah	1	0	555
<b>Total</b>	<b>303</b>	<b>99</b>	<b>16,601</b>

### DISPLACEMENT TRACKING

DTM's Rapid Displacement Tracking (RDT) tool collects and reports on numbers of households forced to flee on a daily basis, allowing for regular reporting of new displacements in terms of numbers, geography and needs. In the first nine months of 2019, conflict has resulted in new patterns of displacement, particularly in within Hajjah, Al Hudaydah, Al Dhale'e, Taizz governorates.

### WEEKLY UPDATE

Between 21 and 27 June, newly displaced households were recorded in Lahj (80 HH), Marib (65 HH), and Taizz (46 HH). Most of these displacements were the result of COVID-19 in Aden (112 HH), and as increased fighting in Al Bayda (54 HH), Al Hudaydah (49 HH).

### IDP HH WHO LEFT DISPLACED LOCATIONS

99 IDP households left their location of displacement and moved either to their place of origin or to some other displaced location.

\*Reported during 21 - 27 Jun, 2020

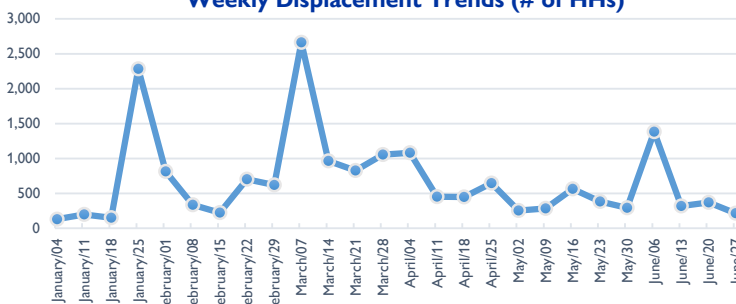
**Displaced People**  
16,601 Households  
99,606 Individuals

\*Reported during Jan 01 - Jun 27, 2020

**Returned People**  
930 Households  
5,580 Individuals

\*Reported during Jan 01 - Jun 27, 2020

### Weekly Displacement Trends (# of HHs)



### IDPs Shelter Types (within reporting period)

- With Host Families who are Relatives (no rental fee)
- In Second Home
- With Host Families who are not Relatives (no rental fee)
- In Settlements (Grouped of Families) Urban and Rural
- In Rented Accommodation

