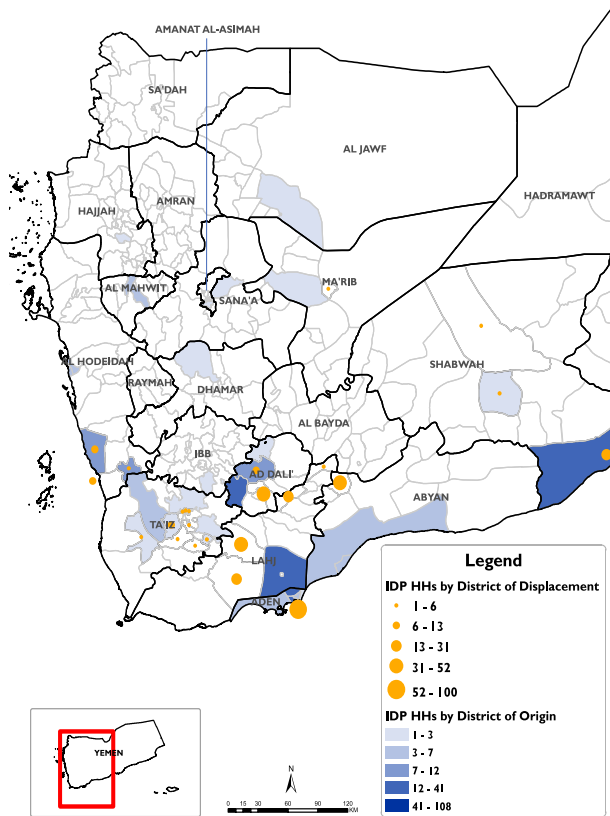


RAPID DISPLACEMENT TRACKING (RDT)

Reporting Period : 07 - 13 Jun 2020

Published on: 14 June 2020

Displaced Households by District of Displacement and Origin



*Based on data collected during 07 - 13 Jun, 2020

Number of Displaced Households (IDP HHs) per Governorate

Governorate	IDP HH Displaced during the week	IDP HH who left displaced location within the week	Total IDP HH
	07 to 13 Jun		01 Jan to 13 Jun
Hajjah	N/A	N/A	N/A
Al Dhale'e	48	68	1,651
Al Hudaydah	27	0	1,008
Taizz	36	1	1,352
Amanat Al Asimah	N/A	N/A	N/A
Ibb	N/A	N/A	N/A
Marib	5	0	8,294
Amran	N/A	N/A	N/A
Sana'a	N/A	N/A	N/A
Shabwah	34	0	528
Lahj	97	0	648
Aden	100	0	112
Sa'ada	N/A	N/A	N/A
Abyan	39	0	565
Dhamar	N/A	N/A	N/A
Hadramaut	0	0	1,007
Al Bayda	0	0	135
Al Jawf	0	0	211
Raymah	N/A	N/A	N/A
Al Mahwit	N/A	N/A	N/A
Socotra	0	0	0
Al Maharah	0	0	554
Total	386	69	16,065

DISPLACEMENT TRACKING

DTM's Rapid Displacement Tracking (RDT) tool collects and reports on numbers of households forced to flee on a daily basis, allowing for regular reporting of new displacements in terms of numbers, geography and needs. In the first nine months of 2019, conflict has resulted in new patterns of displacement, particularly in within Hajjah, Al Hudaydah, Al Dhale'e, Taizz governorates.

WEEKLY UPDATE

Between 7 and 13 June, newly displaced households were recorded in Aden (100 HH), Lahj (97 HH), and Al Dhale'e (48 HH). Most of these displacements were the result of COVID-19 in Aden (187 HH), Lahj (41 HH), and as a result of increased fighting in Al Dhale'e (45 HH).

IDP HH WHO LEFT DISPLACED LOCATIONS

69 IDP households left their location of displacement and moved either to their place of origin or to some other displaced location.

*Reported during 07 - 13 Jun, 2020



Displaced People

16,065 Households
96,390 Individuals

*Reported during Jan 01 - Jun 13, 2020

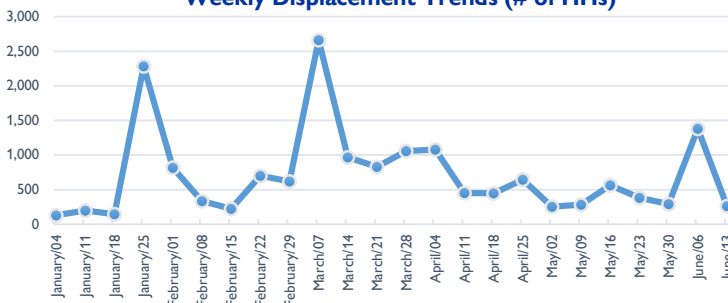


Returned People

896 Households
5,376 Individuals

*Reported during Jan 01 - Jun 13, 2020

Weekly Displacement Trends (# of HHs)



IDPs Shelter Types (within reporting period)

