

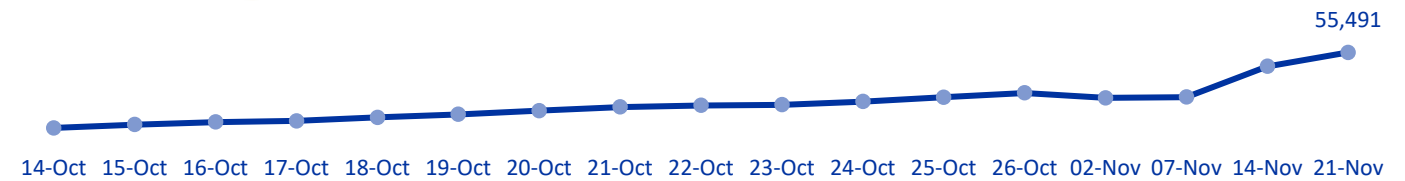
MOBILITY SNAPSHOT – Round 12

Report Production Date: 23 November 2023 | Data collected up till 1600h 21 November 2023

Overview

Armed confrontations have been occurring at the Southern Lebanese border since the 8th of October. As a consequence, several thousand families from South Lebanon have fled their homes. The International Organization for Migration (IOM) conducts daily monitoring of population movements, with the objective of informing preparedness and response planning. Population numbers for collective shelters have been directly provided from the data collected at the level of the emergency operations rooms, supported by the Lebanese Red Cross, (LRC) and the Disaster Risk Management (DRM) Unit.

IDP Count – By date of data collection



IDPs by Cadaster of Arrival and District of Origin



55,491
Displaced individuals



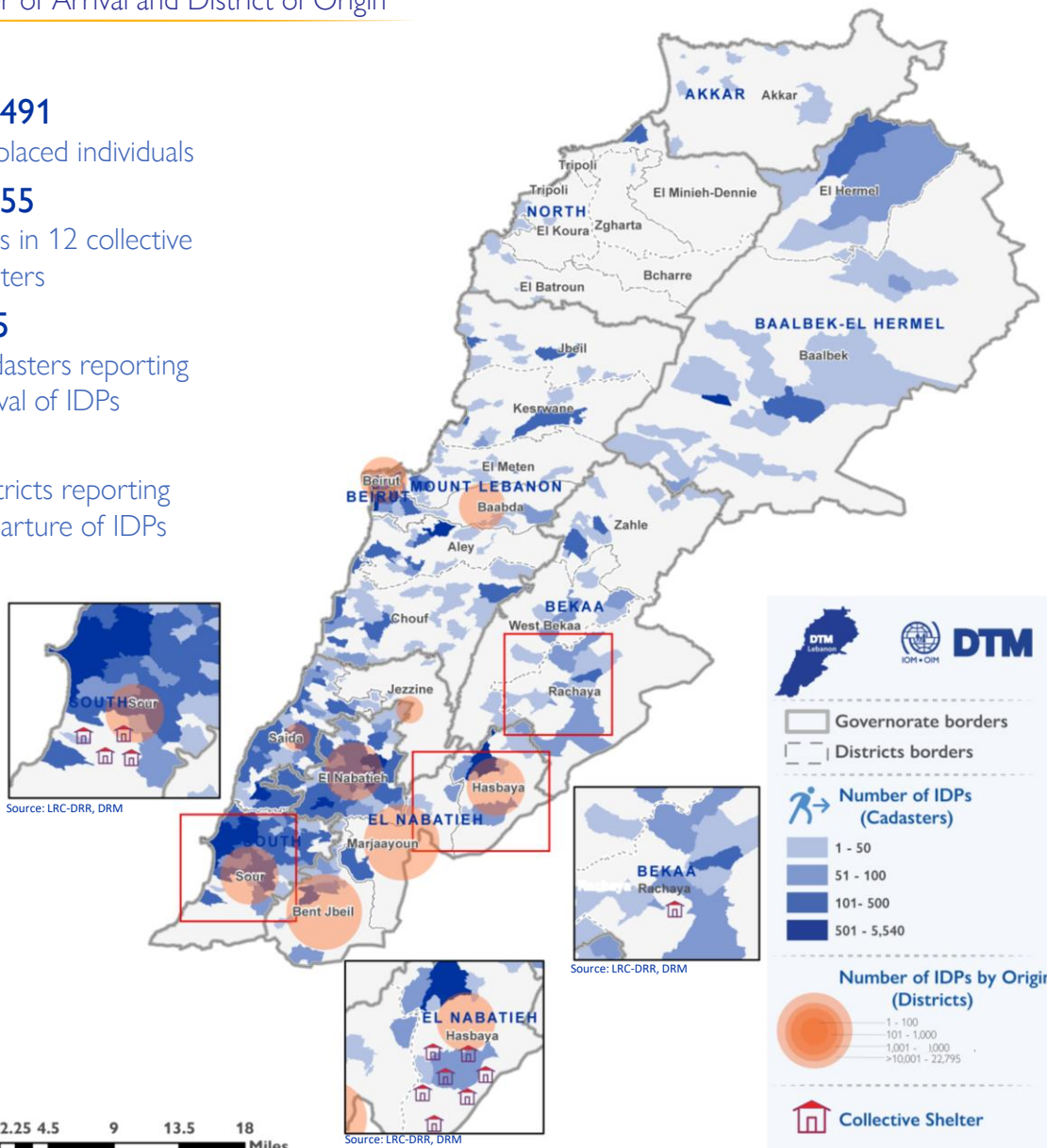
1,055
IDPs in 12 collective shelters



355
Cadastrers reporting arrival of IDPs



9
Districts reporting departure of IDPs

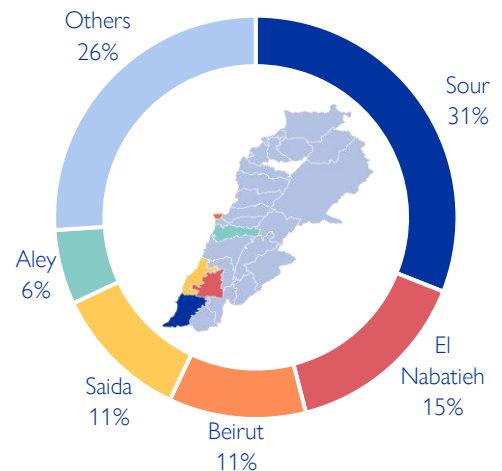


This map is for illustration purposes only. Names and boundaries on this map do not imply official endorsement or acceptance by IOM.

Displacement within Lebanon – By District of Arrival

| Governorate | District | # of Cadasters | # of Locations | IDPs |
|-------------------|------------------|----------------|----------------|---------------|
| South | Sour | 45 | 50 | 16,990 |
| El Nabatieh | El Nabatieh | 41 | 41 | 8,191 |
| Beirut | Beirut | 8 | 14 | 6,113 |
| South | Saida | 44 | 56 | 5,903 |
| Mount Lebanon | Aley | 17 | 23 | 3,146 |
| Mount Lebanon | Baabda | 16 | 23 | 2,555 |
| Baalbek-El Hermel | Baalbek | 23 | 32 | 2,433 |
| Mount Lebanon | Chouf | 27 | 34 | 1,863 |
| El Nabatieh | Hasbaya | 8 | 10 | 1,603 |
| Mount Lebanon | El Meten | 21 | 26 | 1,033 |
| Bekaa | Zahle | 15 | 19 | 852 |
| Mount Lebanon | Kesrwane | 9 | 12 | 821 |
| Mount Lebanon | Jbeil | 13 | 15 | 778 |
| El Nabatieh | Bent Jbeil | 12 | 12 | 742 |
| El Nabatieh | Marjaayoun | 5 | 5 | 732 |
| Bekaa | Rachaya | 9 | 11 | 521 |
| Baalbek-El Hermel | El Hermel | 6 | 10 | 375 |
| Bekaa | West Bekaa | 10 | 10 | 360 |
| North | El Minieh-Dennie | 2 | 2 | 210 |
| Akkar | Akkar | 10 | 10 | 105 |
| North | El Batroun | 7 | 7 | 67 |
| South | Jezzine | 3 | 3 | 39 |
| North | El Koura | 2 | 2 | 33 |
| North | Zgharta | 1 | 1 | 20 |
| North | Tripoli | 1 | 1 | 6 |
| Total | | 355 | 429 | 55,491 |

Chart 1: IDPs Distribution by District of Arrival

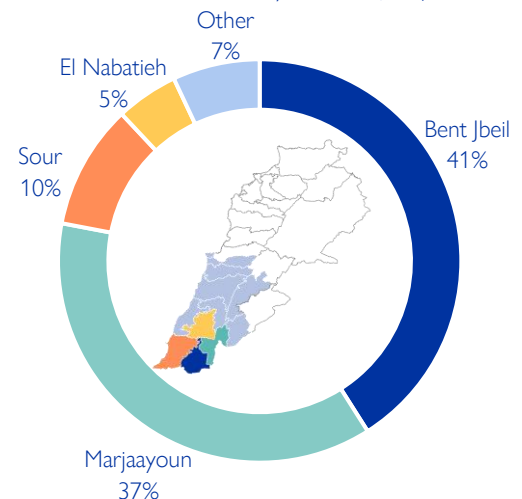


As of 21st of November 2023, Lebanon has recorded 55,491 internally displaced persons (IDPs), showing a 19% increase since 14th of November. IDPs have sought safety in 429 locations (villages or neighbourhoods) across 355 cadasters throughout Lebanon. Displacement has been observed in 25 out of the 26 districts across all eight governorates. Most of the IDPs (73%) are in five districts out of the total 25 districts hosting IDPs—specifically, Sour, El Nabatieh, Aley, Beirut, and Saida.

Displacement within Lebanon – By District of Departure

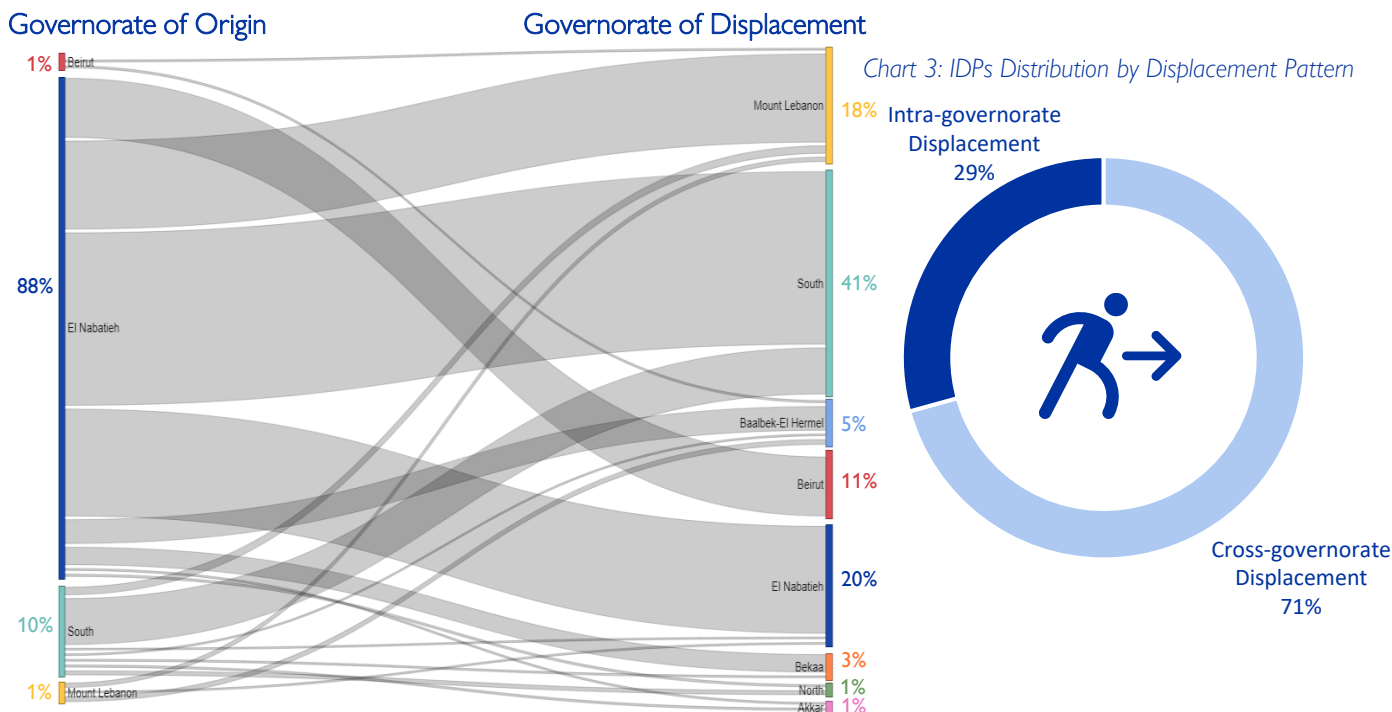
| Governorate | District | IDPs |
|---------------|-------------|---------------|
| El Nabatieh | Bent Jbeil | 22,795 |
| El Nabatieh | Marjaayoun | 20,741 |
| South | Sour | 5,749 |
| El Nabatieh | El Nabatieh | 2,701 |
| El Nabatieh | Hasbaya | 2,687 |
| Mount Lebanon | Baabda | 685 |
| Beirut | Beirut | 104 |
| South | Saida | 25 |
| South | Jezzine | 4 |
| Total | | 55,491 |

Chart 2: IDPs Distribution by District of Departure



93% of the IDPs originate from four districts, 41% are from Bent Jbeil, 37% are from Marjaayoun, 10% are from Sour, and 5% are from El Nabatieh district. The remaining 7% originate from eight different districts.

Movement of IDPs from Governorate of Origin to Governorate of Displacement



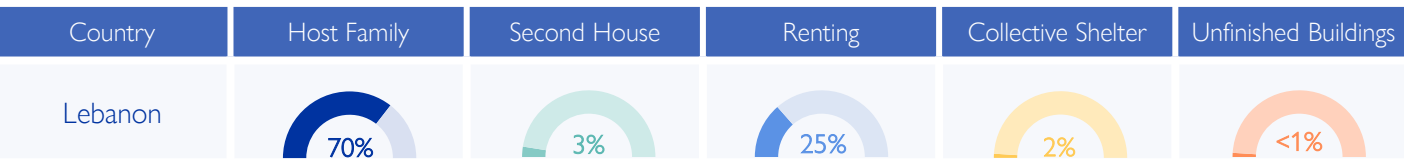
Overall, 71% of the displacement has occurred beyond the boundaries of the IDPs' governorate of origin. While most of the IDPs originate from El Nabatieh, however, only 23% sought safety in another location within the governorate. In the South governorate, where 10% of IDPs originated, 82% of these IDPs chose to move internally within the governorate.

Arrivals in the Last Week – (15 to 21 November)

| Governorate | District | # of Cadasters | # of Locations | IDPs |
|-------------------|-------------|----------------|----------------|--------------|
| El Nabatieh | El Nabatieh | 24 | 24 | 1,200 |
| Akkar | Akkar | 2 | 2 | 7 |
| El Nabatieh | Bent Jbeil | 9 | 9 | 135 |
| Baalbek-El Hermel | Baalbek | 5 | 6 | 67 |
| Baalbek-El Hermel | El Hermel | 2 | 2 | 65 |
| Bekaa | Zahle | 4 | 4 | 67 |
| Bekaa | West Bekaa | 3 | 3 | 55 |
| Bekaa | Rachaya | 1 | 1 | 35 |
| Mount Lebanon | Aley | 5 | 5 | 255 |
| Mount Lebanon | El Meten | 1 | 1 | 35 |
| Mount Lebanon | Kesrwane | 1 | 1 | 6 |
| Mount Lebanon | Baabda | 2 | 3 | 151 |
| Mount Lebanon | Chouf | 3 | 6 | 48 |
| El Nabatieh | Hasbaya | 4 | 4 | 134 |
| El Nabatieh | Marjaayoun | 2 | 2 | 300 |
| North | El Batroun | 1 | 1 | 5 |
| South | Saida | 19 | 21 | 895 |
| South | Sour | 23 | 24 | 2,141 |
| Total | | 111 | 119 | 5,601 |

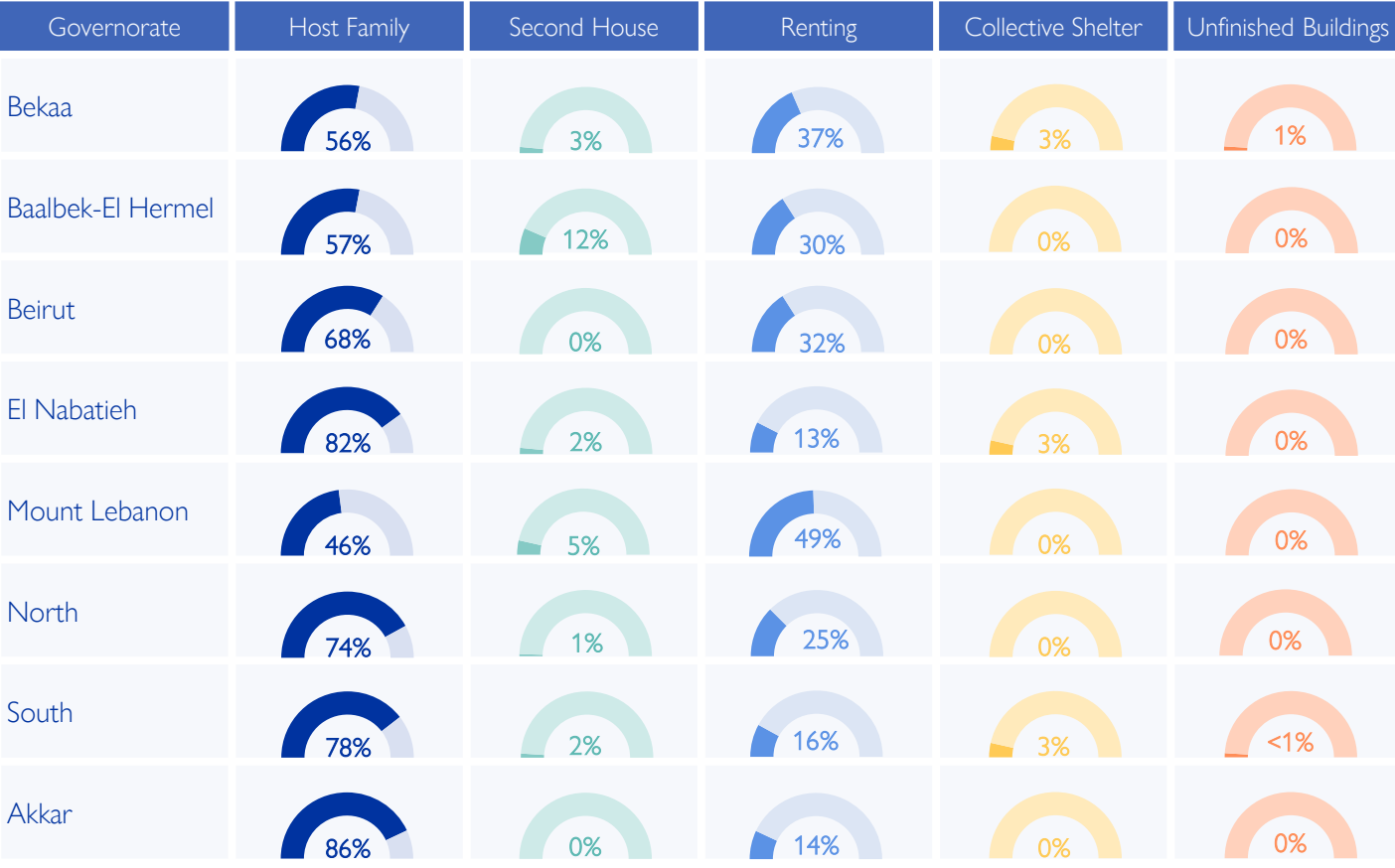
In the past week, 5,601 new IDPs have been recorded across 119 locations in 111 cadasters across 18 districts. These individuals might be experiencing displacement for the first time or undergoing secondary movement.

IDPs Distribution by Shelter Type – By Governorate



Around 70% of IDPs are currently living with host families, while 25% have opted for rental housing. Another 3% have relocated to their secondary residences. A smaller fraction, around 2%, are housed in Collective Shelters, with a further 1% having been reported to be staying in incomplete or unfinished buildings.

In Sour, there are presently four collective shelters accommodating 727 IDPs; in Hasbaya, there are seven collective shelters hosting 282 IDPs and in Kfar Denis, there is one collective shelter hosting 46 IDPs. Additionally, there are reports of 45 IDPs residing in unfinished buildings in Bekaa and South.



Displacement Demographics

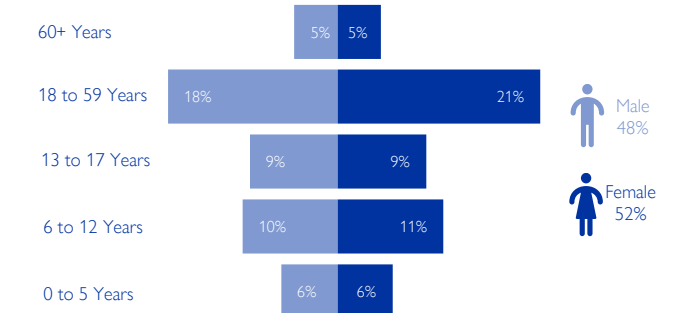


Chart 4: Displacement Demographics

Based on Round 9 data: Based on Round 9 data, 51% of IDPs are children (< 18 years), while 26% are female adults and 23% are male adults.

Methodology

The objective of the Mobility Snapshot is to support the humanitarian community in preparedness and response planning. Multi-layered data is routinely captured through Rounds using a suite of methodological tools designed to track and monitor displacement. These tools are in line with the [DTM Global Methodological Framework](#).

Data is collected nationwide through a combination of face-to-face and remote data collection methods, utilizing a network of over 44 enumerators and 3,600 key informants. These key informants consist of government officials, mukhtars, community representatives, and neighborhood focal points.

The following citation is required when using any data and information included in this information product: "International Organization for Migration (IOM), November 2023. DTM Mobility Snapshot, Round 12. IOM, Lebanon". For more information on terms and conditions of DTM reports and information products, please refer to <https://dtm.iom.int/terms-and-conditions>.