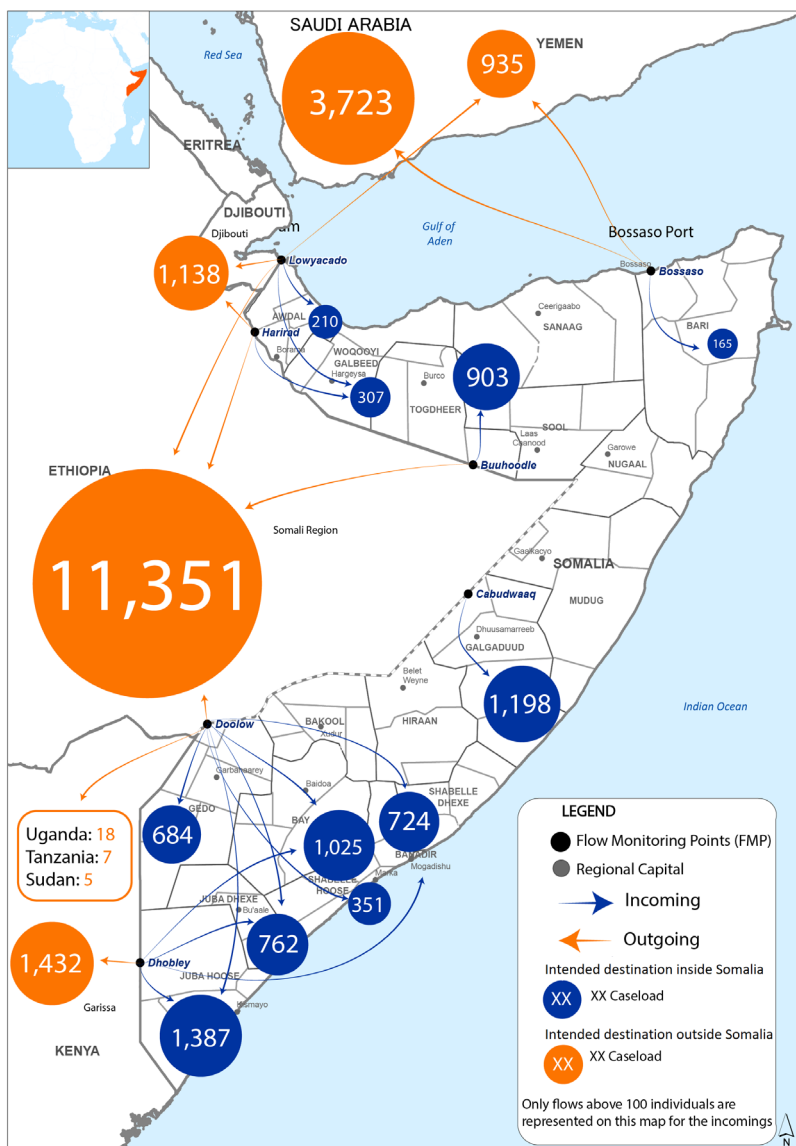


MOVEMENT ILLUSTRATION



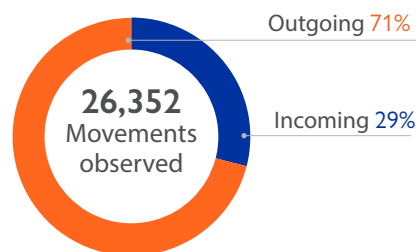
DISCLAIMER: This map is for illustration purposes only. Names and boundaries on this map do not imply official endorsement or acceptance by IOM.

HIGHLIGHTS

A total of 26,352 movements were observed in October 2023, representing a 6 per cent increase compared to September 2023 when 24,816 movements were observed.

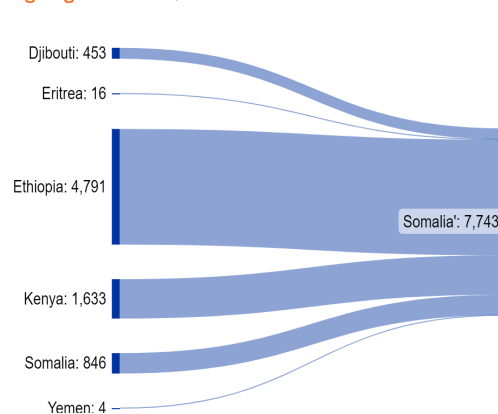
If compared with September 2023, Buuhoodle (23%), Doolow (9%), Dhobley (8%), Lowyacado (8%), Cabudwaaq (3%), Harirad (1%) FMPs recorded increase in movements while Bossaso (-5%) FMP recorded a decrease in movements.

Doolow (43%), Dhobley (21%) and Cabudwaaq (15%) FMPs recorded the highest numbers of incoming flows, while Doolow (57%), Bossaso (25%) and Dhobley (8%) recorded the highest numbers of outgoing flows.

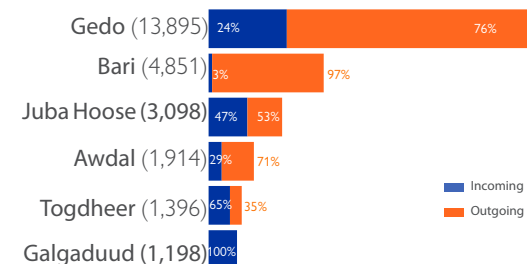


Incoming flows: 7,743 movements were observed entering Somalia. Movements recorded originated from Ethiopia (62%), Kenya (21%) and Djibouti (6%) while 11 percent of the movements observed entering Somalia also originated from Somalia.

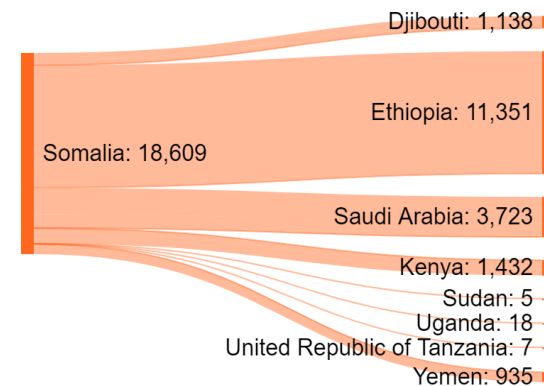
Outgoing flows: 18,609 movements were observed exiting



MOVEMENTS OBSERVED BY FLOW TYPE AND FMP REGION

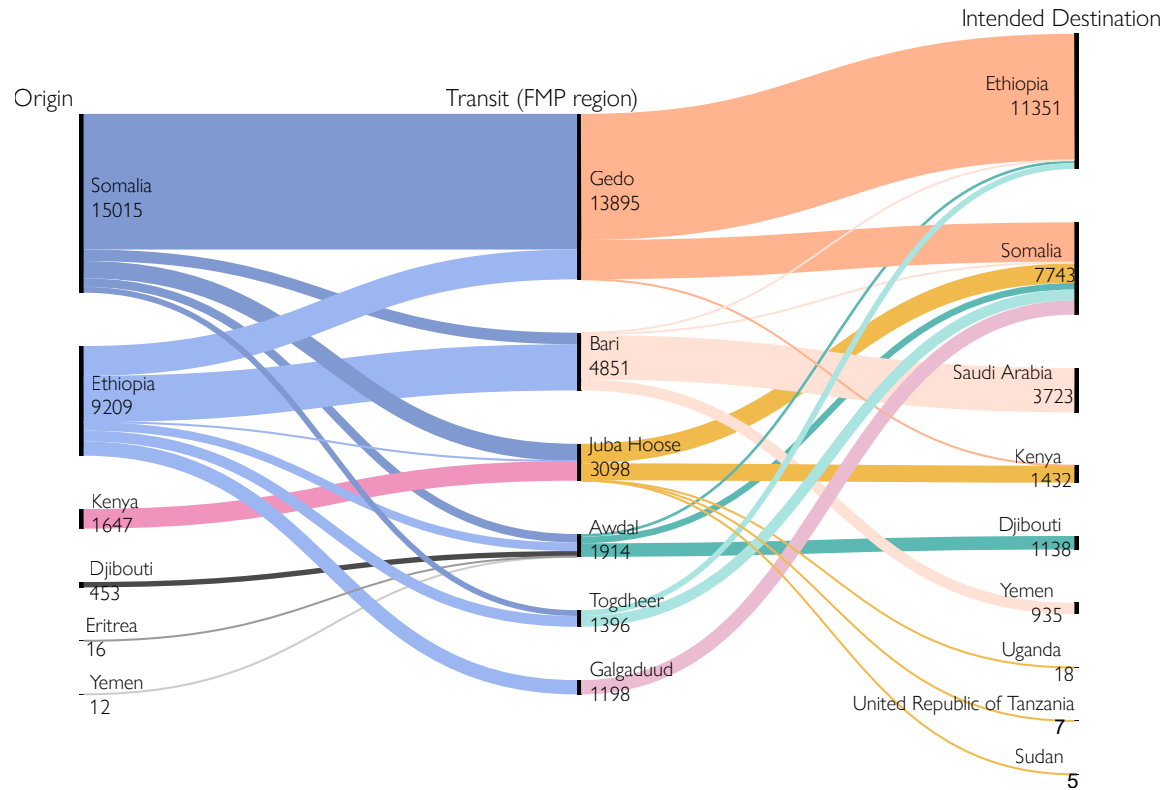


Somalia. The main countries of intended destination for outgoing flows were Ethiopia (61%), Saudi Arabia (20%), Kenya (8%), Djibouti (6%) and Yemen (5%).

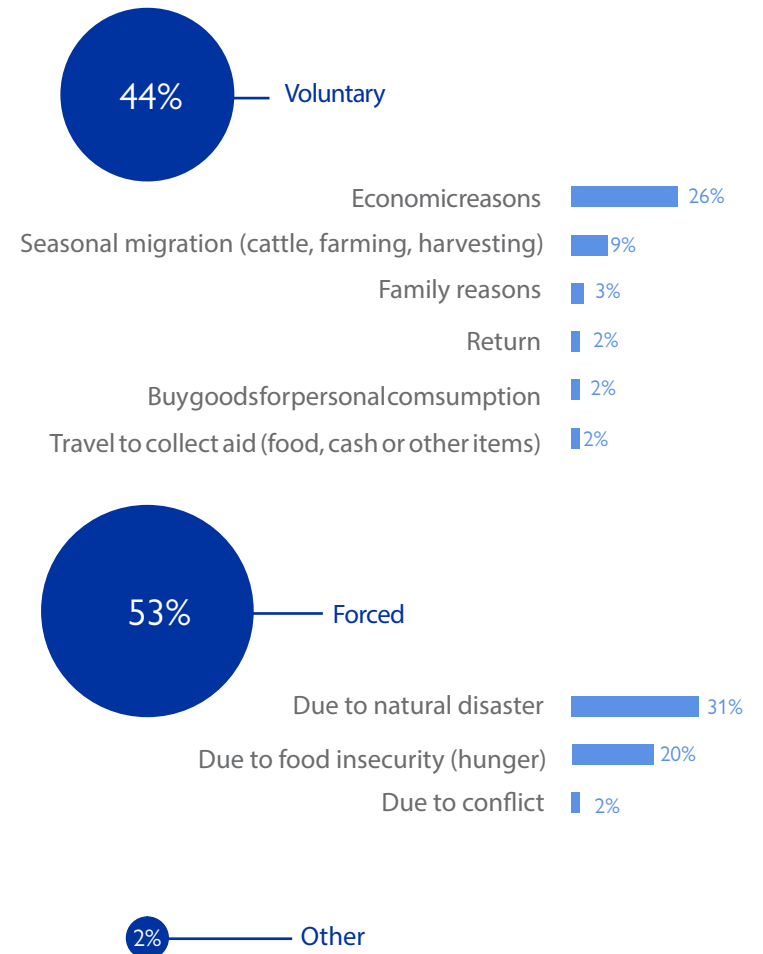


TRAVEL HISTORY, MIGRATION DRIVERS AND CHALLENGES

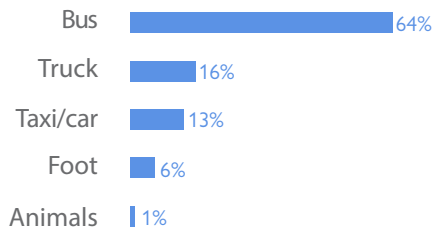
ORIGIN AND INTENDED DESTINATION



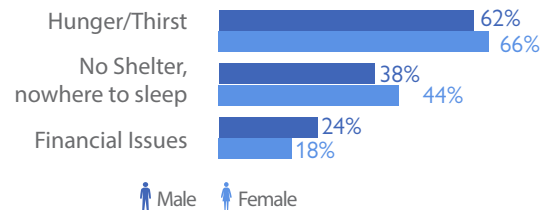
REASONS FOR MOVEMENT



MODES OF TRANSPORT



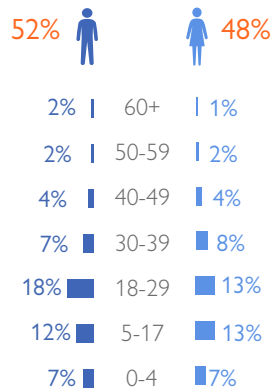
MAIN DIFFICULTIES*



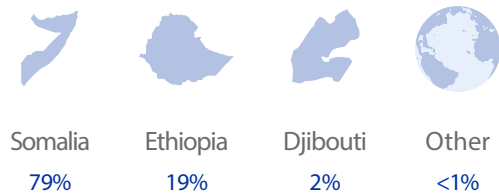
* From FMS data collection tool sample size of 761 individuals who faced difficulties of whom 246 were female and 515 were male. This question has multiple answer options and the sum of % can exceed 100%.

MIGRANT PROFILES

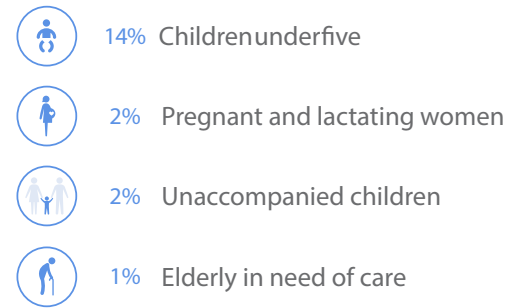
SEX AND AGE



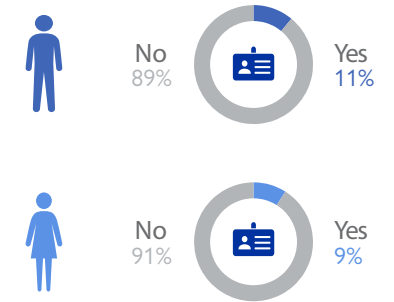
NATIONALITY



VULNERABILITIES¹

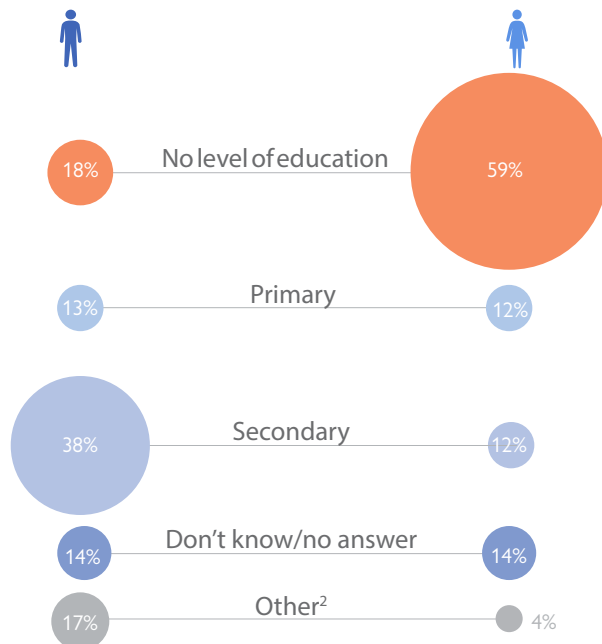


DO YOU HOLD A PASSPORT, OR ANY OTHER FORM OF IDENTIFICATION?*

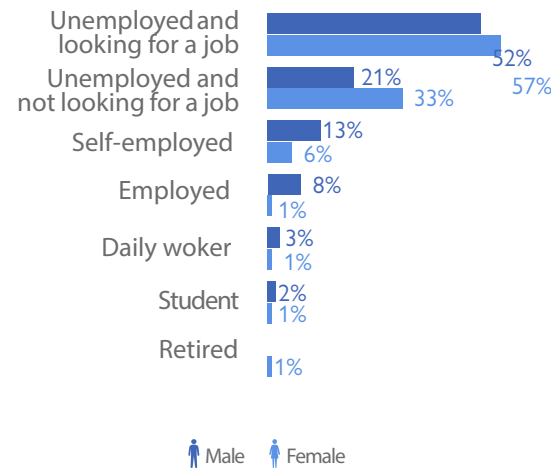


* Data from FMS which is based on a sample size of 1,628 individuals of whom 702 are female and 926 male

SEX AND HIGHEST EDUCATION LEVEL COMPLETED*

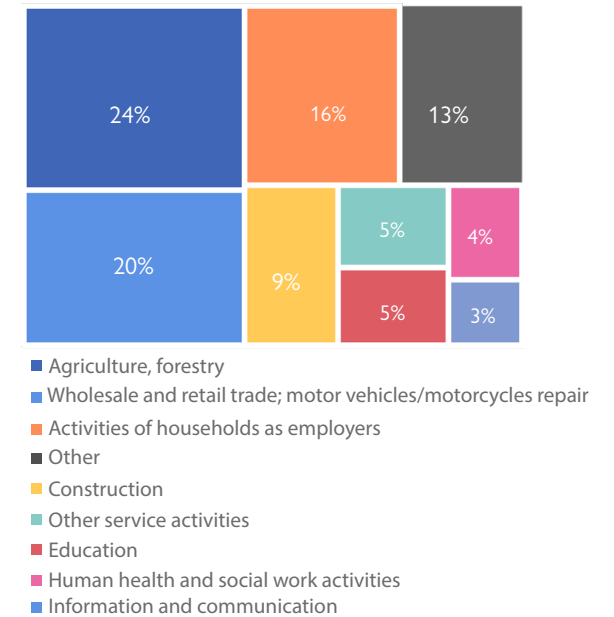


SEX AND CURRENT OCCUPATION*



* Data from FMS which is based on a sample size of 1,628 individuals, of whom 702 are female and 926 are male.

MAIN SECTORS OF EMPLOYMENT*



* Data from FMS which is based on a sample size of 316 individuals

* Data from FMS which is based on a sample size of 1,628 individuals of whom 702 are female and 926 are male.

¹ Vulnerabilities may be overlapping since individuals may have more than one vulnerability. These percentages are therefore calculated from the total number of observed movements this month (26,352)

² Other education levels include: vocational training, religious schools, and tertiary education (Bachelor's/Master's/PhD).

METHODOLOGY

The Displacement Tracking Matrix (DTM) is a system to track and monitor displacement and population mobility. It is designed to regularly and systematically capture, process and disseminate information to provide a better understanding of the movements and evolving needs of mobile populations, whether on site or en route. DTM provides decision makers with primary data and information on human mobility, both in country and at the regional and global level.

Flow monitoring is one of DTM's four methodological components. Its purpose is to provide regular and updated information of the size and profile of population movements. The information and analysis provided by flow monitoring also aims to contribute to improved understanding of shortcomings and priorities in the provision of assistance along the displacement/migratory routes. Flow monitoring methodology consists of three basic steps:

- **High Mobility Area/Location Assessments:** aimed at mapping locations of high mobility to establish where to set up Flow Monitoring Points (FMPs) through key informant interviews;
- **Flow Monitoring Registry (FMR):** aimed at capturing quantitative data about certain characteristics such as the volumes of migrants, their nationalities, sex and age disaggregated information, their origin, their planned destination and key vulnerabilities. This is collected by enumerators at the FMPs. In March 2021, the FMR tool was modified to capture the distinctions between transiting locations and places of origin, transiting destinations and final destinations thus the incoming/outgoing flows from March 2021 may not be directly comparable with the previous weeks and months.
- **Flow Monitoring Survey (FMS):** aimed at capturing qualitative information about the profiles of migrants, migration drivers and migrants' needs. This is done through interviews with a sample of migrants passing through the FMPs.

Movement categories:

- **Outgoing/Exiting Migrants:** migrants originating from and travelling out of the country where the FMP is located. Nationality is irrelevant.
- **Transiting Migrants:** migrants travelling through the country where the FMP is located, where both departure point, and the intended final destination, are not the country of FMP. Nationality is irrelevant.
- **Incoming Migrants:** both entering (non-nationals of the country with the FMP) and returning (nationals of the country with the FMP) migrants, where the intended destination is the country containing the FMP.
- **Internal Migrants:** where both the departure and the destination country are the country with the FMP. This includes circular migration.

More information on flow monitoring data and reports can be accessed via DTM's [Flow Monitoring portal](#).

LIMITATIONS

Data collected for this exercise (from FMR and FMS) should be understood as indicative observations at FMPs. They represent only part of the total flows passing through Somalia. DTM Somalia has seven (7) cross-border FMPs, which is not exhaustive of all cross-border roads that migrants may use.

Although data is collected 5 days per week and it is collected only during working hours. The spatial and temporal coverage of this data collection activity is therefore incomplete. However, it provides information on the situation at assessed points and allows to make hypothesis on the overall situation.

In addition, having collected flow monitoring data consistently in the past years, historical data offers the possibility to observe trends and make comparisons. Data on vulnerability is based on direct observation and should be understood as mainly indicative. FMS data is based on a sample of the total movements observed and therefore it should be interpreted with caution.

FOR MORE INFORMATION

✉ iomsomaliadtm@iom.int

🌐 dtm.iom.int/somalia

🐦 [@IOM_Somalia](https://twitter.com/IOM_Somalia)

OUR PARTNERS



Funded by
the European Union