

ETT Report: No. 359 | 18 — 24 December 2023

NUMBER OF NEW ARRIVALS

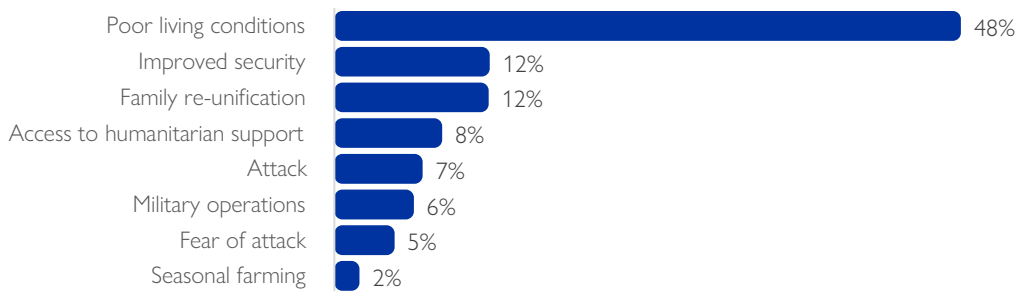


The DTM Emergency Tracking Tool (ETT) is deployed to track and collect information on large and sudden population movements, provide frequent updates on the scale of displacement and quantify the affected population when needed. As a sub-component of the mobility tracking methodology in Nigeria, ETT utilizes direct observations and a broad network of key informants to capture the best estimates of the affected population per location, enabling targeted humanitarian response planning.

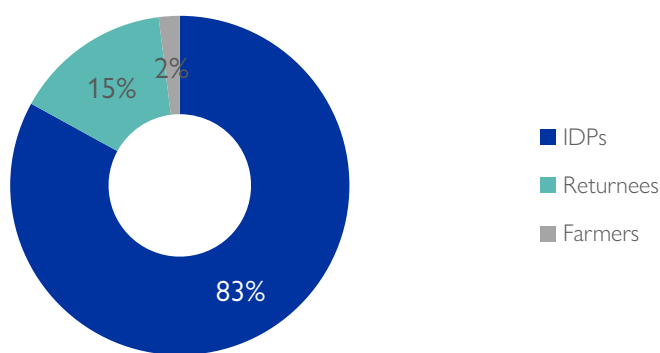
Between 18 and 24 December 2023, a total of 1,336 new arrivals were recorded at locations in Adamawa and Borno states. The new arrivals were recorded at locations in Askira/Uba, Bama, Dikwa, Gwoza, Hawul, Kaga, Kala Balge, Mafa and Monguno Local Government Areas (LGAs) of the most conflict-affected Borno State and in Fufore, Girei, Gombi, Hong, Madagali, Maiha, Mayo-Belwa, Michika, Mubi North, Mubi South, Song, Yola North and Yola South LGAs of Adamawa State.

ETT assessments identified the following movement triggers: poor living conditions (645 individuals or 48%), improved security (160 individuals or 12%), family re-unification (159 individuals or 12%), access to humanitarian support (111 individuals or 8%), attack (91 individuals or 7%), military operations (82 individuals or 6%), fear of attack (62 individuals or 5%) and seasonal farming (26 individuals or 2%).

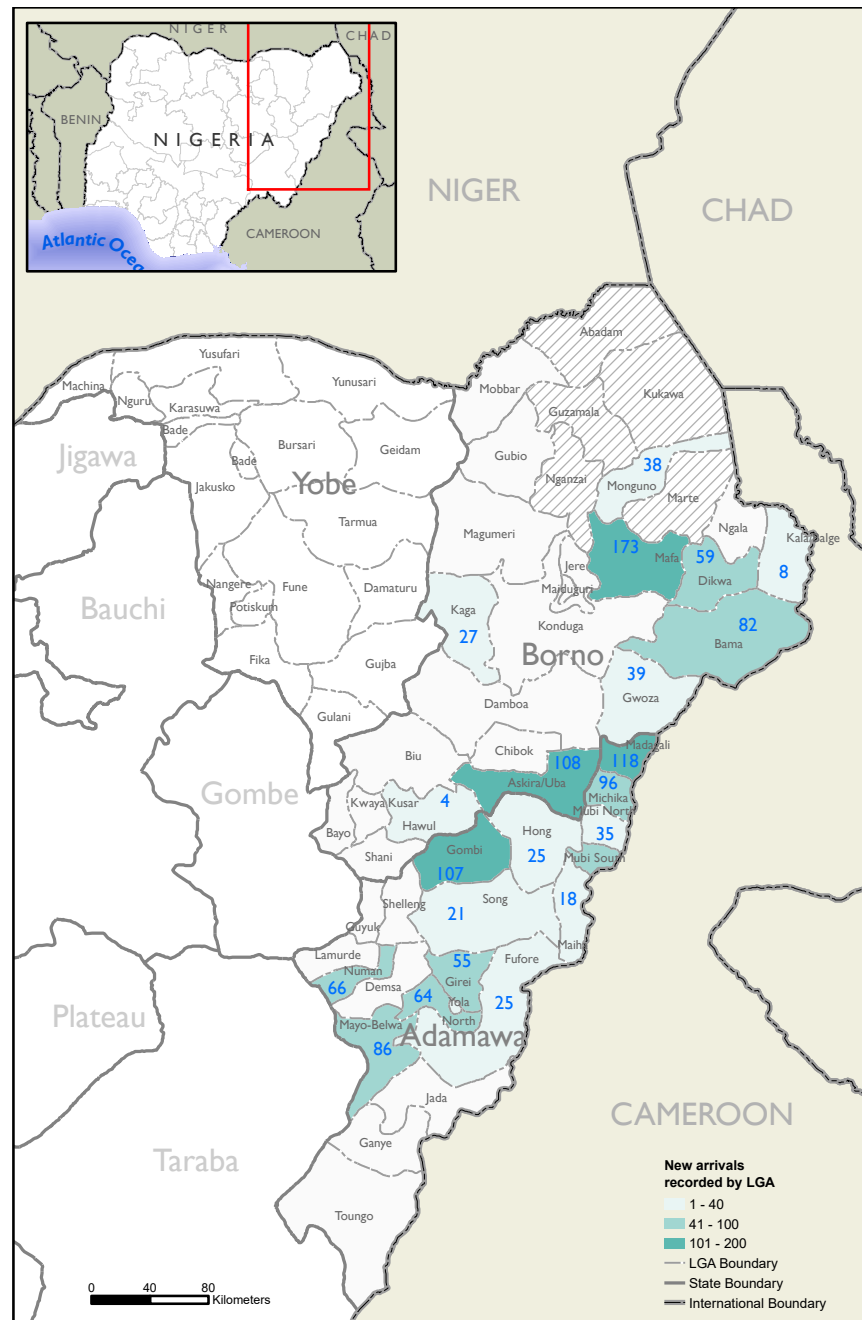
SUMMARY OF THE NEW ARRIVALS



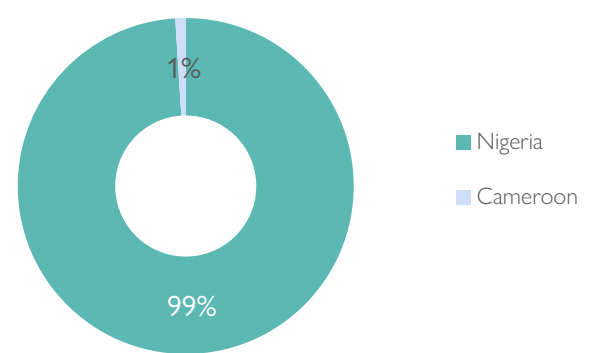
Percentage of individuals by movement trigger



Arriving population



Map of the new arrivals registered\*



Country of departure of the arriving population

LGAs OF MAJOR NEW ARRIVALS

**Mafa:** One hundred and seventy-three (173) new arrivals were recorded in Mafa LGA of Borno State. All arrived from hard-to-reach/inaccessible locations (Abbari and Mujigine wards) in Mafa LGA of Borno State. All movements were triggered by poor living conditions.

**Madagali:** One hundred and eighteen (118) new arrivals were recorded in Madagali LGA of Adamawa State. Sixty-nine per cent were movements from Gwange I and Lamisula/Jabba Mari wards in Maiduguri Metro-politane Council and 31 per cent were movements from Kolere ward in Mubi North LGA of Adamawa State. All movements were triggered by poor living conditions.

**Askira/Uba:** One hundred and eight (108) new arrivals were recorded in Askira/Uba LGA of Borno State. Forty-one per cent were movements from Giwi/Wamdeo ward in Askira/Uba LGA and 59 per cent were movements from Chibok Wuntaku and Mbalala wards in Chibok LGA of Borno State. Forty-one per cent of movements were triggered by improved security, 36 per cent were as a result of attack and 23 per cent were as a result of fear of attack.

**Gombi:** One hundred and seven (107) new arrivals were recorded in Gombi LGA of Adamawa State. Forty-nine per cent arrived from Likama ward in Chibok LGA, 19 per cent arrived from Johode/Chikide/Kughum ward in Gwoza LGA of Borno State, 24 per cent arrived from Girei I and Wuro Dole wards in Girei LGA and eight per cent arrived from Namtari ward in Yola South LGA of Adamawa State. Forty-eight per cent of movements were triggered by attack, 33 per cent were as a result of family re-unification and 19 per cent were as a result of poor living conditions.

**Michika:** Ninety-six (96) new arrivals were recorded in Michika LGA of Adamawa State. Thirty-eight per cent arrived from Gombi North ward in Gombi LGA, 32 per cent arrived from Song Waje ward in Song LGA, 20 per cent arrived from Madzi ward in Michika LGA and 10 per cent arrived from Gulak ward of Madagali LGA of Adamawa State. Ninety per cent of movements were triggered by improved security and 10 per cent were as a result of fear of attack.

\*This map is for illustration purposes only. The boundaries and names shown and the designations used on this map do not imply official endorsement or acceptance by International Organization for Migration.

Table 1. Details of new arrivals by location — only the movements with 10 persons and above are listed below.

State	Arrival location		Movement location			Number of individuals
	LGA	Ward	State	LGA	Ward	
Adamawa	Fufore	Pariya	Adamawa	Song	Song Gari	25
	Girei	Damare	Adamawa	Yola South	Makama 'B'	25
		Girei I		Fufore	Ribadu	30
	Gombi	Gabun	Adamawa	Girei	Wuro Dole	10
		Gombi North	Borno	Chibok	Chibok Likama	52
		Gombi South	Adamawa	Girei	Girei I	16
	Hong	Thilbang	Borno	Gwoza	Johode/Chikide/Kughum	20
		Madagali	Adamawa	Madagali	Pallam	25
	Madagali	Madagali	Adamawa	Mubi North	Kolere	36
		Wagga	Borno	Maiduguri	Gwange I	59
	Maiha	Belel	Adamawa	Fufore	Lamisula/Jabba Mari	23
	Mayo - Belwa	Mayo - Belwa	Adamawa	Mayo - Belwa	Ribadu	18
		Mayo Farang			Bajama	18
	Michika	Michika	Adamawa	Michika	Binyeri	30
					Mayo - Belwa	38
					Madzi	19
					Michika I	21
	Mubi North	Madzi	Adamawa	Song	Gombi North	36
		Minkisi/Wuro Ngiki			Song Waje	10
	Mubi South	Moda / Dlaka / Ghenjuwa	Adamawa	Madagali	Gulak	10
		Yelwa			Maiha	Sorau A
	Numan	Lamorde	Borno	Bama	Buduwa / Bula Chirabe	31
		Nassarawo	Adamawa	Madagali	Madagali	27
	Song	Imburu	Adamawa	Guyuk	Dumne	31
Numan li		Girei		Damare	18	
Yola North	Song Waje	Adamawa	Gombi	Tawa	21	
Yola South	Jambutu	Adamawa	Demsa	Dilli	15	
	Adarawo	Adamawa	Fufore	Beti	26	
	Bole Yolde Pate		Madagali	Gulak	13	
Namtari	Fufore		Pariya	17		
Borno	Askira/Uba	Borno	Chibok	Mbalala	39	
			Askira / Uba	Giwil/ Womdeao	44	
			Chibok	Chibok Wuntaku	25	
	Bama	Shehuri / Hausari / Mairi	Borno	Bama	Goneri	23
					Gulumba / Jukkuri / Batra	16
					Lawanti / Malam / Mastari / Abbaram	28
					Yabiri Kura/Yabiri Gana/Chongolo	15
	Dikwa	Dikwa Central	Borno	Dikwa	Muliye / Jemuri	59
	Gwoza	Pulka Bokko	Borno	Gwoza	Johode/Chikide/Kughum	23
	Kaga	Benisheikh	Borno	Kaga	Tobolo	27
Mafa	Mafa	Borno	Mafa	Abbari	54	
				Mujigine	119	
Monguno	Monguno	Borno	Kukawa	Alagarno	23	
				Kekeno	15	

## LIMITATIONS

The Emergency Tracking Tool (ETT) figures reported are not cumulative of all the affected persons thus far, but rather provide a snapshot of the current displacement situation on the date indicated. The data and information reported on this dashboard are related solely to the movements caused by the above listed triggers between 18 - 24 December.

When quoting, paraphrasing, or in any way using the information mentioned in this report, the source needs to be stated appropriately as follows: "Source: Displacement Tracking Matrix (DTM) of the International Organization for Migration, Nigeria Mission, January 2024".

For more information or to report an alert, please contact: DTM Nigeria: [iomnigeriadtm@iom.int](mailto:iomnigeriadtm@iom.int) : <https://dtm.iom.int/nigeria>