

KEY SITE INFORMATION

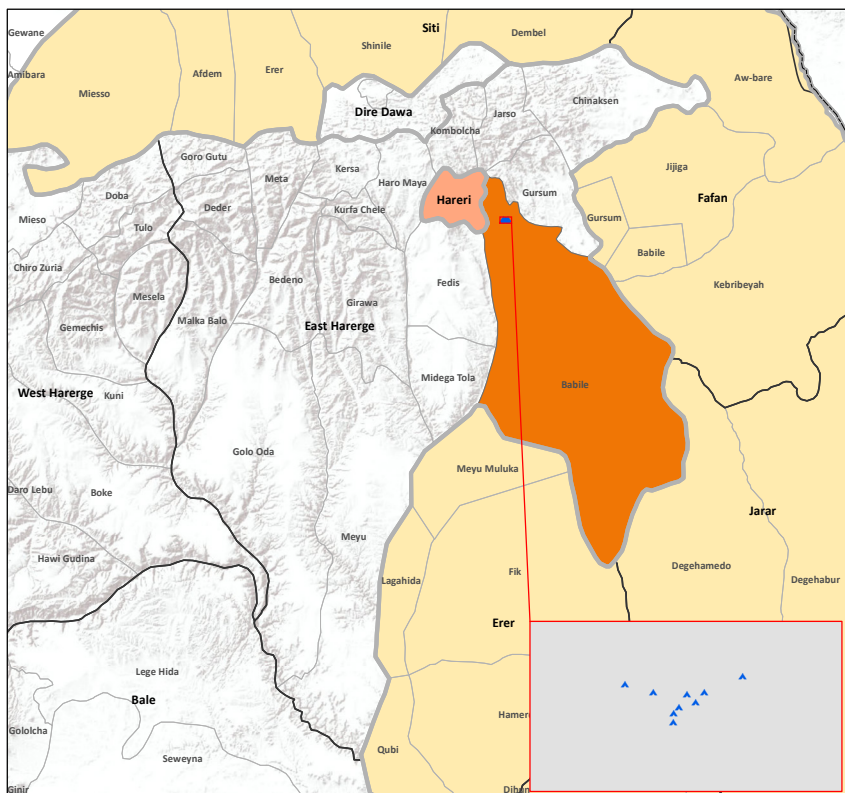

9 Collective sites
0 Transit center

2 Sites with SMC
9 Sites with SMA
Inaccessible Sites

9
Sites

KEY IDP INFORMATION

55,000 Total Displaced People
11,000 Total Displaced Households

DTM
IOM • OIM
THE UN MIGRATION AGENCY

OVERVIEW OF DISPLACEMENT
Conflict induced displacement in Somali region and across Oromia-Somali borders

DATA COLLECTION: 13 - 22 AUGUST 2018

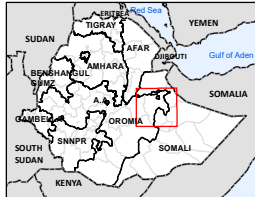
Sites by causes of displacement
▲ Conflict

IDPs in assessed woredas
381
55,000
Not assessed (due to security)

Boundaries
--- International Boundary
--- Regional Boundary
--- Zone Boundary
--- Woreda Boundary

Sources : IOM Map production date : 31 August 2018
This map is for illustration purposes only.
Names and boundaries on this map do not imply official endorsement or acceptance by IOM.
Map Data Source: Boundary shpfile - 2008

www.displacement.iom.int/ethiopia
dimethiopia@iom.int



DEMOGRAPHICS

Population Location		IDPs	
Population in collective centres		55,000	
Population in transit centre		0	
Total		55,000	
Origins		Zone	Woreda
Origin of the largest IDP group		East Harargei	Babile

MOBILITY

Month of arrival of the first IDP group **4 August 2018**

Month of arrival of the last IDP group **10 - 21 August 2018**

Sites at which IDPs intend to return **9**

Time Frame **Unknown**




SHELTER

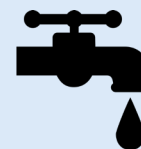


Key Shelter Indicators	
Sites where >25% households living outside/open spaces	9
Sites where >50% households living in permanent shelter	9
Sites where >50% households in below standard shelters	0
Sites where >50% households in emergency shelters	0
Most needed NFI in the majority of sites	Emergency shelter kits

METHODOLOGY

The DTM Rapid Response Site Assessment tool is designed to provide detailed information at site level for emergencies occurring outside the DTM Mobility Tracking data collection periods. Only collective sites were included in this assessment, as a result, the displacement situation in host communities is not represented in this report. IDP community leaders collaborated closely with IOM as key informants during the assessment with the aim to provide the humanitarian community with up-to-date information on the locations, needs and demographics of displaced populations.

WASH



Key Wash Indicators	
Main source of drinking water	Water truck
Sites with insufficient drinking water	5
Sites where there are non-functional latrines	9
Sites where people are living where open defecation is frequently visible	7
Sites where people do not have enough containers to fetch/store water	0

FOOD


Key Food and Nutrition Indicators	
How do most households access food?	Given by relative or friends
When was the last time food was distributed in the majority of sites	None
Sites where > 50% households recieved food assistance	None
Number of sites with access to a market	9
Most common reason for lack of market access	N/A
Number of sites where screening was conducted for malnourished children and/or pregnant and lactating women	9
Number of sites where supplementary feeding is available for pregnant and lactating mothers	0
Number of sites where supplementary feeding is available for children	0

HEALTH


Key Health Indicators	
Number of sites at which unusual number of deaths in the last month were observed?	1
Number of sites at which unusual deaths of animals were observed in the last month?	3
At the majority of sites how long does it take to reach the health facility?	On site/Off site <30 mins
In the majority of sites, where are most women are delivering children?	Health Facility
Are most women seeing health professionals during their pregnancy?	Yes All

EDUCATION


Key Education Indicators	
Number of sites with access to formal primary education (FPE)	0

PROTECTION


Key Protection Indicators	
Number of sites at which security is provided	5
Who provides security at the majority of sites?	Self organized
Number of sites at which security incidents are reported	1

COMMUNICATION


Key Communication Indicators	
At the majority of sites, where do most residents get their information/ news from?	Families/Friends
At the majority of sites, what additional information would be most beneficial for IDPs?	Access to Services/ Safety Security

LIVELIHOOD


Key Livelihood Indicators	
Occupation/trade of IDPs in the majority of sites	Farming
Number sites with access to income generating activities	0
Number of sites with livestock on site	9
Number of sites with access to land for cultivation	0

** This DTM report is intended to provide a summary of the key sectoral indicators and demographic data collected during the rapid site assessment. For comprehensive data on all indicators please see the full dataset available on request from DTM Ethiopia, dtmethiopia@iom.int.*

KEY SITE INFORMATION

1 Collective sites
1 Transit center

0 Sites with SMC
2 Sites with SMA
Inaccessible Sites

2
Sites

KEY IDP INFORMATION

381 Total Displaced People
76 Total Displaced Households

DEMOGRAPHICS

Population Location		IDPs	
Population in collective centres		131	
Population in transit centre		250	
Total		381	
Origins		Zone	Woreda
Origin of the largest IDP group		Fafan	Jijiga Town

MOBILITY

Month of arrival of the first IDP group **4 August 2018**

Month of arrival of the last IDP group **13 August 2018**

Sites at which IDPs intend to return **2**

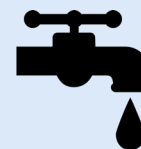
Time Frame **Unknown**

SHELTER

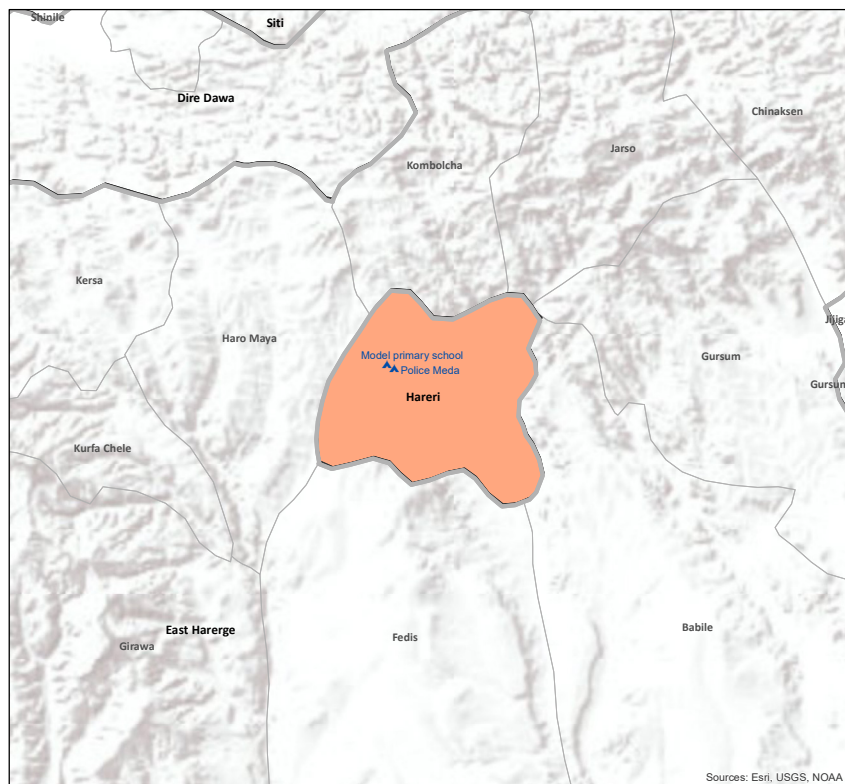

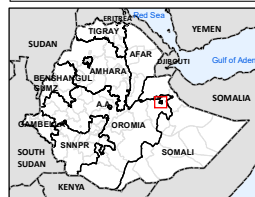


Key Shelter Indicators	
Sites where >25% households living outside/open spaces	2
Sites where >50% households living in permanent shelter	2
Sites where >50% households in below standard shelters	0
Sites where >50% households in emergency shelters	0
Most needed NFI in the majority of sites	Emergency shelter kits

WASH



Key Wash Indicators	
Main source of drinking water	Piped Network/ Water Truck
Sites with insufficient drinking water	0
Sites where there are non-functional latrines	1
Sites where people are living where open defecation is frequently visible	1
Sites where people do not have enough containers to fetch/store water	0



DTM
 IOM • OIM
 THE UN MIGRATION AGENCY
OVERVIEW OF DISPLACEMENT
 Conflict induced displacement in Hareri region
 DATA COLLECTION: 13 - 22 AUGUST 2018
 Sources: IOM. Map production date: 31 August 2018. This map is for illustration purposes only. Names and boundaries on this map do not imply official endorsement or acceptance by IOM. Map Data Source: Boundary shpfile - 2008.
www.displacement.iom.int/ethiopia
dtmethiopia@iom.int


METHODOLOGY

The DTM Rapid Response Site Assessment tool is designed to provide detailed information at site level for emergencies occurring outside the DTM Mobility Tracking data collection periods. Only collective sites were included in this assessment, as a result, the displacement situation in host communities is not represented in this report. IDP community leaders collaborated closely with IOM as key informants during the assessment with the aim to provide the humanitarian community with up-to-date information on the locations, needs and demographics of displaced populations.

FOOD


Key Food and Nutrition Indicators	
How do most households access food?	Given by relative or friends
When was the last time food was distributed in the majority of sites	None
Sites where > 50% households recieved food assistance	None
Number of sites with access to a market	2
Most common reason for lack of market access	N/A
Number of sites where screening was conducted for malnourished children and/or pregnant and lactating women	0
Number of sites where supplementary feeding is available for pregnant and lactating mothers	0
Number of sites where supplementary feeding is available for children	0

HEALTH


Key Health Indicators	
Number of sites at which unusual number of deaths in the last month were observed?	0
Number of sites at which unusual deaths of animals were observed in the last month?	0
At the majority of sites how long does it take to reach the health facility?	Off site >30 mins
In the majority of sites, where are most women are delivering children?	Health Facility
Are most women seeing health professionals during their pregnancy?	Yes All

EDUCATION


Key Education Indicators	
Number of sites with access to formal primary education (FPE)	0

PROTECTION


Key Protection Indicators	
Number of sites at which security is provided	2
Who provides security at the majority of sites?	Self organized/ Other
Number of sites at which security incidents are reported	0

COMMUNICATION


Key Communication Indicators	
At the majority of sites, where do most residents get their information/ news from?	Other
At the majority of sites, what additional information would be most beneficial for IDPs?	Access to Services/ Safety Security

LIVELIHOOD


Key Livelihood Indicators	
Occupation/trade of IDPs in the majority of sites	Petty Trade
Number sites with access to income generating activities	0
Number of sites with livestock on site	0
Number of sites with access to land for cultivation	0

** This DTM report is intended to provide a summary of the key sectoral indicators and demographic data collected during the rapid site assessment. For comprehensive data on all indicators please see the full dataset available on request from DTM Ethiopia, dtmethiopia@iom.int.*

Collective Site	All site typologies which are not classified as host communities. Many of the site typologies which fall under this term are camp - like settings.
Transit Centre	Transit centers are sites which are established by international organizations to host internally displaced populations and returnees for short periods of time before they can be relocated either to a planned site/ camp or their places of origin.