

The objective of the Emergency Tracking Tool (ETT) is to collect information on large and sudden population movements. Information is collected through key informant interviews and direct observation. This dashboard provides information on movements which occurred on 22 and 26 November 2021, in two sites of Lac Province.

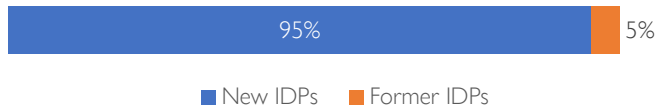
- On 22 November 2021, due to the rising waters of the Lake Chad which surrounded the Diamerom site (located in the *sous-préfecture* of Liwa, *Département* of Fouli) and which can cause of insecurity in this locality, **20 households (83 individuals) made up of Internally Displaced Persons (IDPs) who had settled in the Diamerom site, preemptively left this site to seek refuge in the Borora site** (*sous-préfecture* of Daboua, *Département* of Fouli).
- Due to the attack carried out by armed groups on 24 September 2021 in the village of Salia (*sous-préfecture* of Liwa, *département* of Fouli) (see ETT 121) and the ensuing insecurity, **287 households (1,702 individuals) left this village as a preventive measure to seek refuge in the Kadoulou site** (located in the same *sous-préfecture*). **These people were all members of the local community of Salia.**

METHODOLOGY : Data were collected through observations and interviews with key informants in host locations

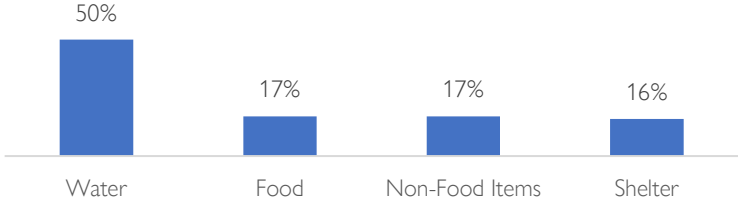
SUMMARY OF EVENTS



Displaced persons
307 Households
1,785 Individuals



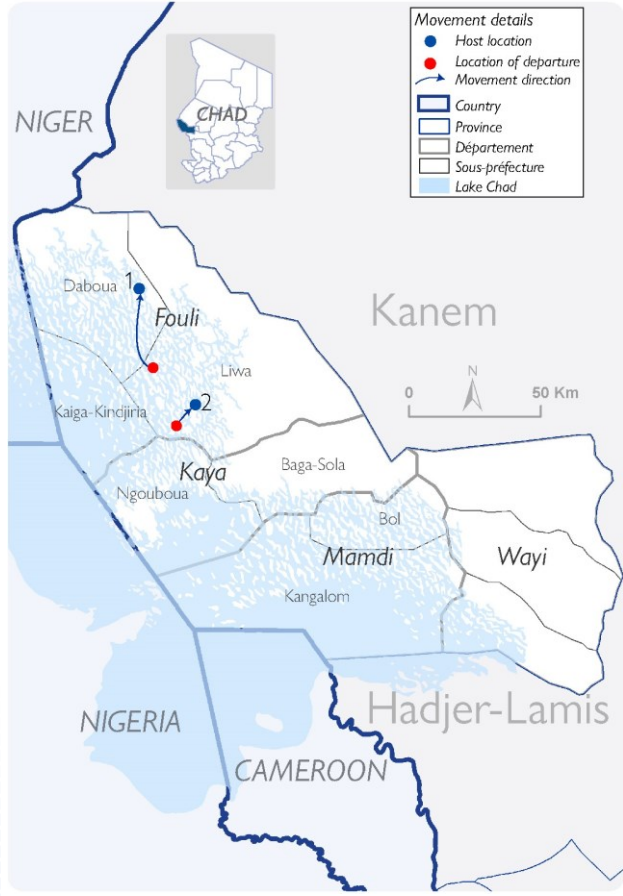
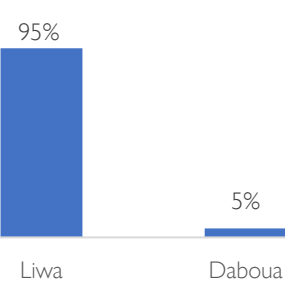
Priority needs



Departure location



Host sous-préfectures



This map is for illustration purposes only. The depiction and use of boundaries, geographic names and related data shown on maps and included in this report are not warranted to be error free nor do they imply judgment on the legal status of any territory, or any endorsement or acceptance of such boundaries by IOM.

Displacement information

#	Date of movement	Displaced population	Departure location	Population category	Host sous-préfecture	Host location	Reason for movement	Means of transportation	Priority needs		
									Water	Shelter	Non-Food Items
1	22/11/2021	20 households, 83 individuals	Diamerom (Liwa)	IDPs	Daboua	Site of Borora (Daboua)	Preventive movement	On foot and by riding animals			
2	26/11/2021	287 households, 1 702 individuals	Salia (Liwa)	IDPs	Liwa	Site of Kadoulou (Liwa)	Preventive movement	On foot and by riding animals			