

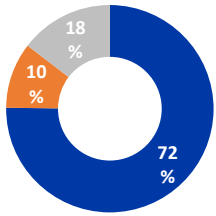
Displacement Tracking Matrix (DTM)

Displacement Overview



318,929 Individuals
53,642 Households

Displaced Individuals



228,443 IDPs

32,459 Unregistered Refugees

58,027 Returnees

Demographics



49% Female

51% Male

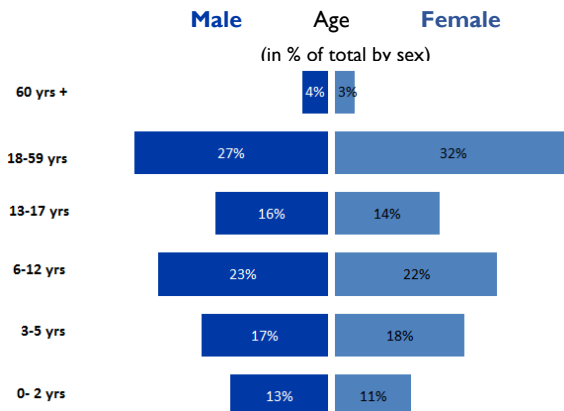


67% Minors

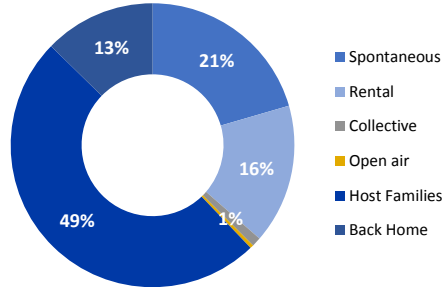


7.5 Average Household Size

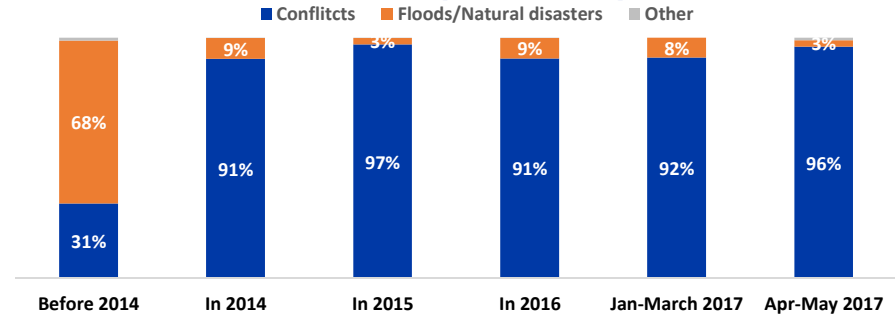
Age/Gender Distribution



Shelter Type

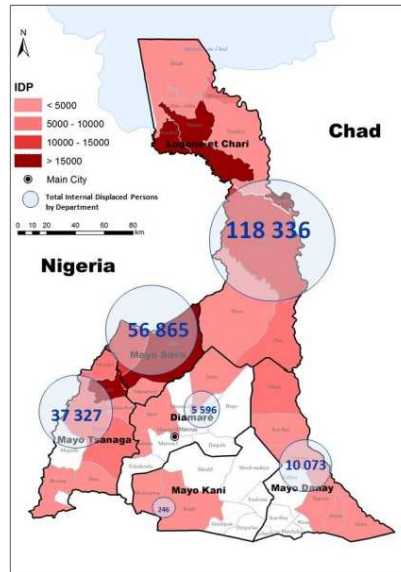


Reasons of Displacement by Period

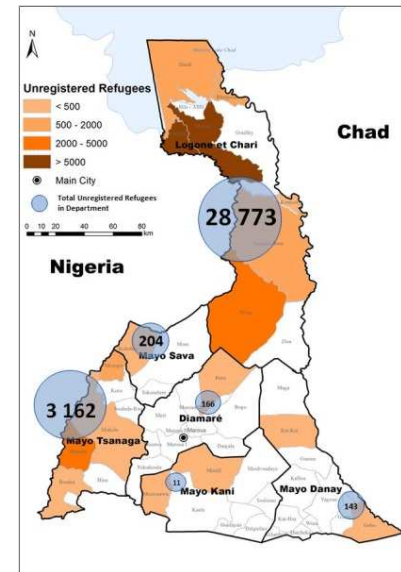


Population Distribution by Department

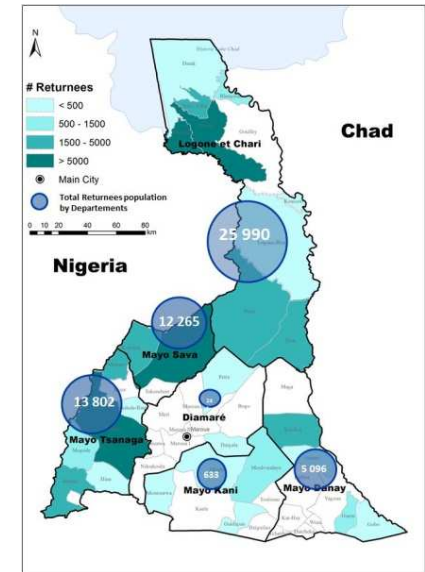
IDPs



Unregistered Refugees



Returnees



| Department | Individuals |
|-----------------|----------------|
| Logone-Et-Chari | 118,336 |
| Mayo-Sava | 56,865 |
| Mayo-Tsanaga | 37,327 |
| Mayo-Danay | 10,073 |
| Diamaré | 5,596 |
| Mayo-Kani | 246 |
| Total | 228,443 |

| Department | Individuals |
|-----------------|---------------|
| Logone-Et-Chari | 28,773 |
| Mayo-Tsanaga | 3,162 |
| Mayo-Sava | 204 |
| Diamaré | 166 |
| Mayo-Danay | 143 |
| Mayo-Kani | 11 |
| Total | 32,459 |

| Department | Individuals |
|-----------------|---------------|
| Logone-Et-Chari | 25,990 |
| Mayo-Tsanaga | 13,802 |
| Mayo-Sava | 12,265 |
| Mayo-Danay | 5,096 |
| Mayo-Kani | 633 |
| Diamaré | 241 |
| Total | 58,027 |