

DISPLACEMENT TRACKING MATRIX (DTM) TIGRAY REGION,  
ROUND 8: NOVEMBER – DECEMBER 2017

*Summary of key findings*

DATE OF PUBLICATION: 5 FEB 2017



Photo: Tigray Region -DTM Team



### TIGRAY REGION - KEY FINDINGS

#### LOCATION AND CAUSE OF DISPLACEMENT:

20,752 displaced individuals comprising 7,621 households in 61 displacement sites were identified in Tigray region. These figures represent an increase of 1,317 in the total individuals (4%), households (4.8%) and sites (3%) since round 7 (September/October 2017). Only 7 of the 61 sites opened in 2017. Conflict was the primary cause of displacement for an estimated 93% of the displaced population.

**DEMOGRAPHICS:** 46% of displaced individuals were female and 54% were male. 46% were younger than 18 years old. 5% were over 60 years old.

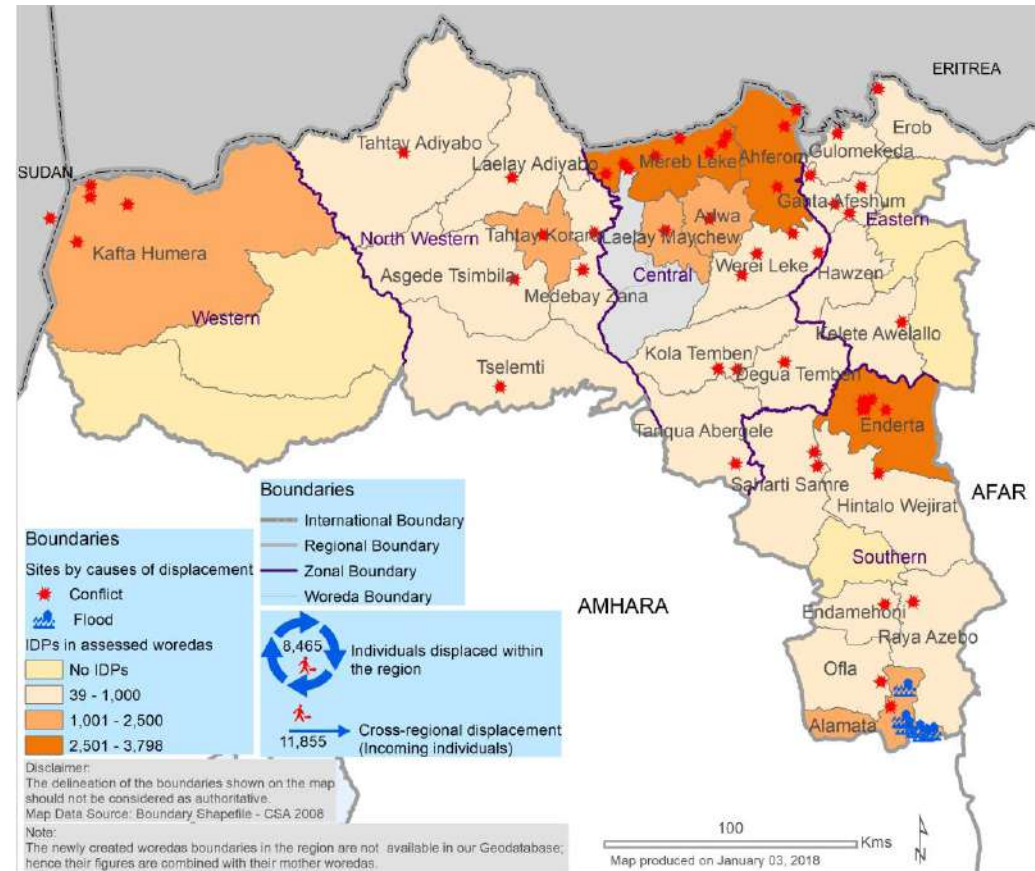
**SHELTER:** Only one sites reported that households were living in shelters that were below standard. In this site, less than 25% of households were living in substandard shelter arrangements.

**WASH:** Only 28 sites meet SPHERE standards of access to over 15 liters of water per person per day. 13 (21%) displacement sites reported having no toilets.

**FOOD, NUTRITION AND LIVELIHOODS:** 36 (59%) sites, representing 9,474 individuals, reported no access to food. 80% of sites reported that IDPs did not have access to income generating activities.

**HEALTH:** Malaria was the primary health concern in this round of data collection with 25 (41%) sites reporting this.

**EDUCATION:** In 89% of sites (54) more than 50% of children are attending school. Formal primary school education is available at all 61 sites. Alternative basic education (ABE) is not available at any sites.



**PROTECTION:** Harmful traditional practices were reported across some sites. These practices included: child marriage and forced labor and forced begging.

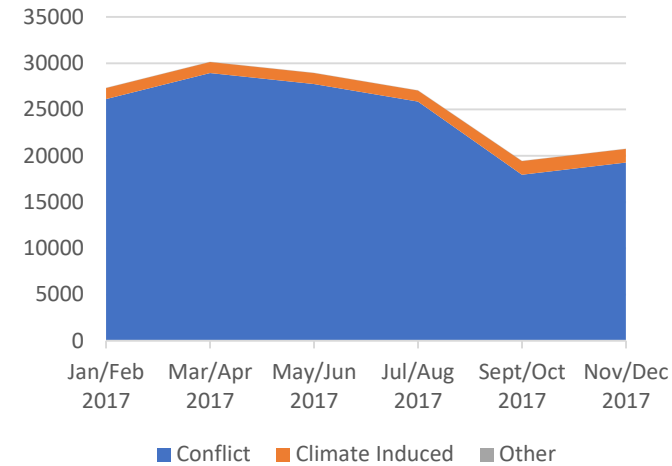
**COMMUNICATION:** 54% of sites reported that the authorities were IDPs primary source of information followed by local leaders (34%) and site managers (11%).

### LOCATION, ORIGIN AND CAUSE OF DISPLACEMENT

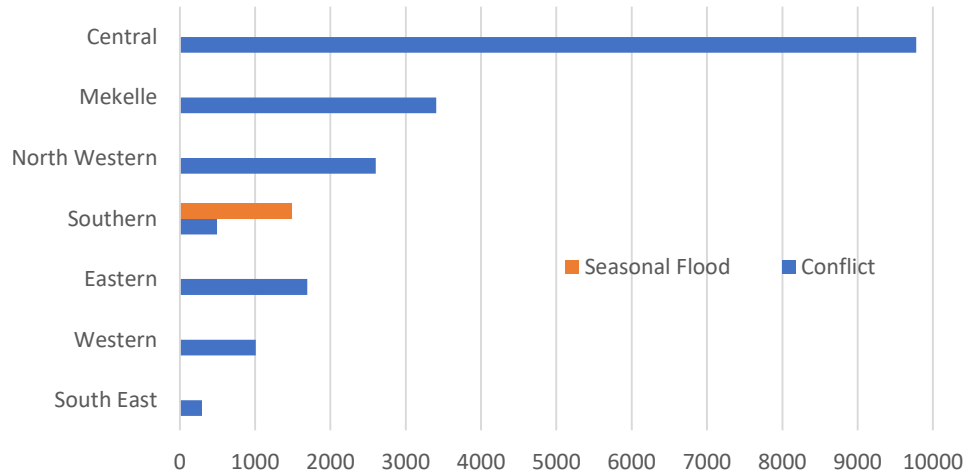
- At 14 of the 61 sites new IDP arrivals were recorded in 2017. At the remaining 47 sites no new IDPs had arrived in 2017.
- 7 of all sites identified opened between January and December 2017. 43 opened in 2016 and 11 opened before 2016.
- Figure 1 shows the estimated number of IDPs by assessment round and cause of displacement. Figure 2 shows the number of IDPs displaced by zone and cause of displacement. Figure 3 shows the drivers of displacement disaggregated by the number

of IDPs in sites reporting new arrivals in 2017 and the site opening date.

- 41% of IDPs in Tigray region are internally displaced within the region, while 57% are displaced from Amhara and the remaining 2% are displaced from Oromia.
- Of the IDPs displaced within Tigray region, all of those who originated in Tigray were displaced within their zone of origin.
- Only 7 sites (11%) reported that IDPs had been previously displaced.



**Figure 1: Estimated IDPs in identified sites by assessment round and cause of displacement**



**Figure 2: Estimated IDPs displaced by zone and cause of displacement**

Drivers	Total Recorded Population	Percentage of Total Population	Population in Sites Reporting New Arrivals in 2017, Where Sites Opened in 2017.	Percentage of Total Population	Population in Sites Reporting New Arrivals in 2017, Where Sites Opened Before 2017	Percentage of Total Population
Conflict	19,271	93%	221	1%	1,902	9%
Seasonal Flood	1,481	7%	508	2%	-	-

**Figure 3: Distribution of IDPs by drivers of displacement, total recorded population and population in sites reporting new arrivals in 2017**



# DISPLACEMENT TRACKING MATRIX (DTM) TIGRAY REGION

ROUND 8: NOVEMBER – DECEMBER 2017

- IDPs from 5 (8%) sites were leaving the site. Of these, IDPs from 4 sites were going to the nearest village. IDPs from 1 site intended to stay close to the displacement site.
- IDPs from all 61 sites foresaw a resolution to their displacement.
- At 72% of sites IDPs prefer reintegration as a durable solution to their displacement. IDPs at 15 sites (25%) prefer relocation as a durable solution and IDPs at 2 sites (3%) preferred return.
- Figure 3 shows the percentage of sites reporting various obstacles to returns, while figure 4 shows support IDPs need to return or reintegrate.

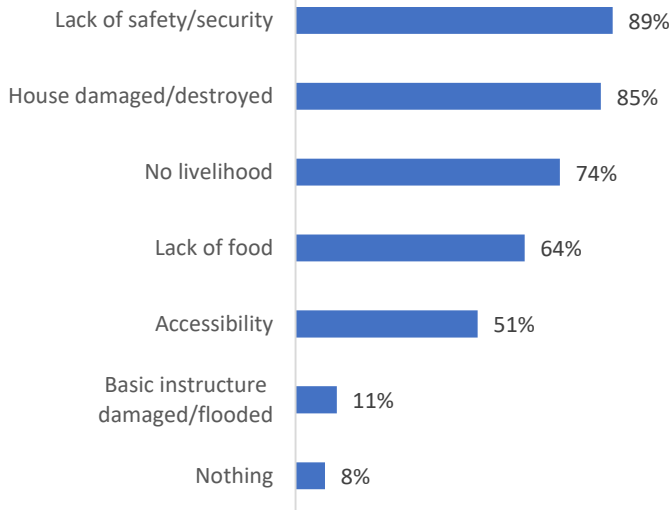


Figure 3: % of sites reporting obstacles to return

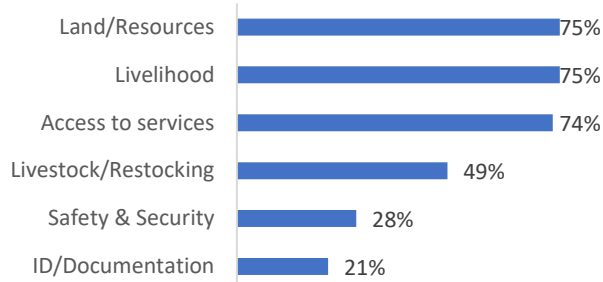


Figure 4: % of sites by support needed for return or reintegration

## POPULATION DEMOGRAPHICS

- 46% of displaced individuals were female and 54% were male. 46% were younger than 18 years old. 5% were over 60 years old. Individuals with specific vulnerabilities were also reported at displacement sites and are represented in figure 6.

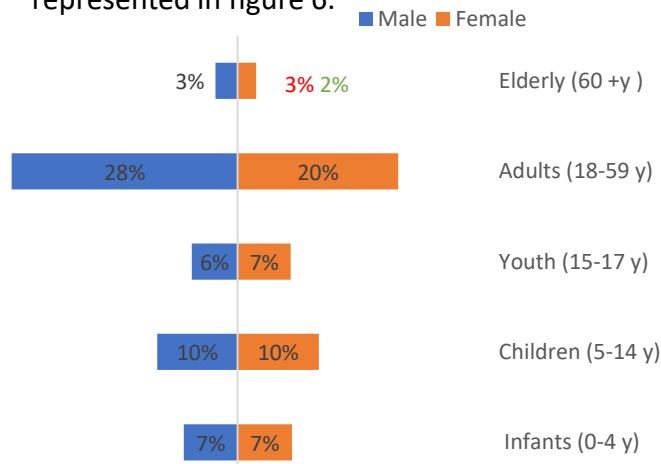


Figure 5: Gender and age distribution

Special vulnerabilities	# Individuals
Pregnant girls under 18	18
Pregnant women over 18	456
Breastfeeding mothers	1,012
Persons with disabilities under 18	87
Persons with disabilities over 18	227
Persons with chronic diseases	229
Members of religious minorities	0
Members of ethnic minorities	0
Elderly persons without caregivers	104
Unaccompanied children	8
Separated children	76
Orphaned children	107
Single female headed households	892
Single male headed households	1,091
Single child headed households	4
Elderly headed households	515

Figure 6: Individuals with specific vulnerabilities among IDP population



# DISPLACEMENT TRACKING MATRIX (DTM) TIGRAY REGION

ROUND 8: NOVEMBER – DECEMBER 2017

## CAUSE OF DISPLACEMENT BY ZONE AND WOREDA IN ROUND 7 AND 8

Increase in IDP numbers from previous round of assessment ■  
 Decrease in IDP numbers from previous round of assessment ■  
 No change from previous round of assessment ■  
 New site or uncovered site ■

Zone	Woreda	Displacement Reason	Round 8			% change in estimated # of HHs	Round 7		
			HHs	Individuals	Sites		HHs	Individuals	Sites
Central	Abiyadi	Conflict	264	507	1	NO CHANGE	264	507	1
Central	Adwa	Conflict	647	1,143	1	NO CHANGE	647	1,143	1
Central	Ahferom	Conflict	661	3,798	3	NO CHANGE	661	3,798	3
Central	Axum	Conflict	692	1,418	1	NO CHANGE	692	1,418	1
Central	Kola Temben	Conflict	51	53	1	NO CHANGE	51	53	1
Central	Mereb Leke	Conflict	601	2,599	8	+13.18%	531	2,589	8
Central	Tanqua Abergele	Conflict	30	55	1	NO CHANGE	30	55	1
Central	Werei Leke	Conflict	105	206	4	NO CHANGE	105	206	4
<b>Central Total</b>			<b>3,051</b>	<b>9,779</b>	<b>20</b>	<b>+2.35%</b>	<b>2,981</b>	<b>9,769</b>	<b>20</b>
Eastern	Adigrat Town	Conflict	318	545	1	NO CHANGE	318	545	1
Eastern	Erob	Conflict	30	138	1	NO CHANGE	30	138	1
Eastern	Ganta Afeshum	Conflict	117	184	3	NO CHANGE	117	184	3
Eastern	Gulomekeda	Conflict	126	544	1	NO CHANGE	126	544	1
Eastern	Hawzen	Conflict	100	173	1	NO CHANGE	100	173	1
Eastern	Wukro Town	Conflict	49	107	1	NO CHANGE	49	107	1
<b>Eastern Total</b>			<b>740</b>	<b>1,691</b>	<b>8</b>	<b>NO CHANGE</b>	<b>740</b>	<b>1,691</b>	<b>8</b>
Mekelle	Adihaki Sub City	Conflict	80	217	1	NO CHANGE	80	243	1
Mekelle	Ayder Sub City	Conflict	144	720	1	NO CHANGE	144	267	1
Mekelle	Hadnet Sub City	Conflict	104	280	1	+13.04%	92	280	1
Mekelle	Hawelti Sub City	Conflict	134	488	1	+22.94%	109	662	1
Mekelle	Kedamay Weyane Sub City	Conflict	294	396	1	NO CHANGE	294	396	1
Mekelle	Quiha Subcity	Conflict	52	110	1	+8.33%	48	106	1
Mekelle	Semen Sub City	Conflict	379	1,195	1	+54.69%	245	476	1
<b>Mekelle Total</b>			<b>1,187</b>	<b>3,406</b>	<b>7</b>	<b>+17.29%</b>	<b>1,012</b>	<b>2,430</b>	<b>7</b>



# DISPLACEMENT TRACKING MATRIX (DTM) TIGRAY REGION

ROUND 8: NOVEMBER – DECEMBER 2017

## CAUSE OF DISPLACEMENT BY ZONE AND WOREDA IN ROUND 7 AND 8

Increase in IDP numbers from previous round of assessment ■  
 Decrease in IDP numbers from previous round of assessment ■  
 No change from previous round of assessment ■  
 New site or uncovered site ■

Zone	Woreda	Displacement Reason	Round 8			% change in estimated # of HHs	Round 7		
			HHs	Individuals	Sites		HHs	Individuals	Sites
North Western	Asgede Tsimbila	Conflict	81	120	1	NO CHANGE	81	120	1
North Western	Lalay Adiyabo	Conflict	67	105	1	NO CHANGE	67	105	1
North Western	Medebay Zana	Conflict	34	47	1	+47.83%	23	38	1
North Western	Sheraro Town	Conflict	40	80	1	-95.50%	888	2,107	2
North Western	Shire Endaselasie	Conflict	848	2,027	1	NEW/UNCOVERED	-	-	-
North Western	Tselemti	Conflict	112	221	1	NO CHANGE	112	221	1
North Western	<b>Total</b>		<b>1,182</b>	<b>2,600</b>	<b>6</b>	<b>+0.94%</b>	<b>1,171</b>	<b>2,591</b>	<b>6</b>
South East	Degua Temben	Conflict	26	39	1	NO CHANGE	26	39	1
South East	Hintalo Wejirat	Conflict	52	170	1	+116.67%	24	50	1
South East	Saharti Samre	Conflict	48	83	2	NEW/UNCOVERED	-	-	-
South East	<b>Total</b>		<b>126</b>	<b>292</b>	<b>4</b>	<b>+152.00%</b>	<b>50</b>	<b>89</b>	<b>2</b>
Southern	Alamata	Conflict	75	179	1	+102.70%	37	70	1
Southern	Korem Town	Conflict	23	40	1	+4.55%	22	39	1
Southern	Maychew	Conflict	41	128	1	+5.13%	39	118	1
Southern	Raya Alamata	Seasonal Flood	380	1,481	7	-5.47%	402	1,481	7
Southern	Raya Azebo	Conflict	50	148	1	NO CHANGE	50	148	1
Southern	<b>Total</b>		<b>569</b>	<b>1,976</b>	<b>11</b>	<b>+3.45%</b>	<b>550</b>	<b>1,856</b>	<b>11</b>
Western	Kafta Humera	Conflict	285	399	4	NO CHANGE	285	400	4
Western	Setit Humera	Conflict	481	609	1	NO CHANGE	481	609	1
Western	<b>Total</b>		<b>766</b>	<b>1,008</b>	<b>5</b>	<b>NO CHANGE</b>	<b>766</b>	<b>1,009</b>	<b>5</b>
<b>Conflict Total</b>			<b>7,241</b>	<b>19,271</b>	<b>54</b>	<b>+5.43%</b>	<b>6,868</b>	<b>17,954</b>	<b>52</b>
<b>Seasonal Flood Total</b>			<b>380</b>	<b>1,481</b>	<b>7</b>	<b>-5.47%</b>	<b>402</b>	<b>1,481</b>	<b>7</b>
<b>Grand Total</b>			<b>7,621</b>	<b>20,752</b>	<b>61</b>	<b>+4.83%</b>	<b>7,270</b>	<b>19,435</b>	<b>59</b>





# DISPLACEMENT TRACKING MATRIX (DTM) TIGRAY REGION

ROUND 8: NOVEMBER – DECEMBER 2017

## ABOUT DTM

### DTM GLOBAL

The Displacement Tracking Matrix (DTM) is a system to track and monitor displacement and population mobility. It is designed to regularly and systematically capture, process and disseminate information to provide a better understanding of the movements and evolving needs of displaced populations, whether on site or en route. More information is available at [www.globaldtm.info](http://www.globaldtm.info).

### DTM IN ETHIOPIA

In Ethiopia, data is collected at zone, woreda and site level. Since September 2016, eight rounds of assessments have been completed. The DTM programme is implemented in close collaboration with the National Disaster Risk Management Commission, regional, zonal and woreda counterparts and DTM implementing partner the Danish Refugee Council (DRC).

### METHODOLOGY

IOM's DTM team composed of enumerators from IOM, ERCS and DRC were deployed across the country to collect the data. The process involved the following steps:

**Zone level:** Interviews with key informants from

the Disaster Prevention and Preparedness Office (DPPO), community representatives, and the education and health offices collect information including (among others) estimated caseload of displaced population, identification of woredas within the zone that host displaced populations, reason for displacement, time of arrival of IDPs and location of origin.

**Woreda level:** Information is collected from key woreda informants and includes (among others) estimated length of stay, number of displaced households and individuals at woreda level, displaced population by type of temporary settlements and approximate locations of identifiable displacement sites. The information is used to plan site assessments.

**Site assessments:** In-depth IDP site assessments capture detailed information through key informant interviews, direct observation and focus group discussions with male, female, elderly, children and IDP representatives. Data on available services by sector, accessibility constraints, exact type, location and name of the site, place of origin of IDPs, estimated size and type of the site and most common type of shelter are captured. Age and gender disaggregation for the site is extrapolated using a demographic calculator

tool based on the age range and sex of the household members of 20 randomly selected households from the site.

### For more information:

Mr Robert Trigwell  
DTM Coordinator - IOM Ethiopia  
[rtrigwell@iom.int](mailto:rtrigwell@iom.int)

Ms Nikki Herwanger  
DTM Information Management Officer  
[NHerwanger@iom.int](mailto:NHerwanger@iom.int)



**USAID**  
FROM THE AMERICAN PEOPLE



Humanitarian Aid  
and Civil Protection



Schweizerische Eidgenossenschaft  
Confédération suisse  
Confederazione Svizzera  
Confederaziun svizra

Swiss Agency for Development  
and Cooperation SDC



International Organization for Migration (IOM)  
The UN Migration Agency

**ANNEX I : INTERNAL DISPLACEMENTS IN TIGRAY REGION AS OF DECEMBER 2017**

Zone	Woreda	Sex	Age Groups					Total	HHs	Site Open Date	Cause	Duration
			Infants (0-4 y)	Children (5-14 y)	Youth (15-17 y)	Adults (18-59 y)	Elderly (60 +y)					
Central	Abiyiadi	Male	30	53	6	218	5	312	264	06-Sep-16	Conflict	During 2016
Central	Abiyiadi	Female	23	46	5	120	1	195	264			
Central	Adwa	Male	73	78	38	456	6	651	647	16-Aug-16	Conflict	During 2016
Central	Adwa	Female	93	123	70	203	3	492	647			
Central	Ahferom	Male	329	299	288	337	186	1,439	565	06-Apr-15	Conflict	Before 2016
Central	Ahferom	Female	412	501	402	495	234	2,044	565			
Central	Ahferom	Male	4	3	12	34	22	75	46	16-Apr-15	Conflict	Before 2016
Central	Ahferom	Female	7	8	44	60	26	145	46			
Central	Ahferom	Male	9	12	1	34	-	56	50	24-Aug-16	Conflict	During 2016
Central	Ahferom	Female	3	10	-	26	-	39	50			
Central	Axum	Male	85	152	30	579	8	854	692	20-Aug-16	Conflict	During 2016
Central	Axum	Female	69	120	49	324	2	564	692			
Central	Kola Temben	Male	1	-	-	51	-	52	51	26-Aug-16	Conflict	During 2016
Central	Kola Temben	Female	-	-	-	1	-	1	51			
Central	Mereb Leke	Male	145	318	213	580	87	1,343	601	23-Apr-15	Conflict	Before 2016
Central	Mereb Leke	Female	134	285	242	543	52	1,256	601			
Central	Tanqua Abergele	Male	3	4	-	18	1	26	30	25-Aug-16	Conflict	During 2016
Central	Tanqua Abergele	Female	7	7	-	15	-	29	30			
Central	Werei Leke	Male	15	21	8	79	-	123	105	24-Aug-16	Conflict	During 2016
Central	Werei Leke	Female	4	16	2	61	-	83	105			
<b>Central Total</b>			<b>1,446</b>	<b>2,056</b>	<b>1,410</b>	<b>4,234</b>	<b>633</b>	<b>9,779</b>	<b>6,102</b>			
Eastern	Adigrat Town	Male	15	20	40	150	4	229	318	17-Jul-16	Conflict	During 2016
Eastern	Adigrat Town	Female	20	35	55	200	6	316	318			
Eastern	Erob	Male	1	17	9	28	4	59	30	21-Sep-17	Conflict	In 2017
Eastern	Erob	Female	3	18	8	47	3	79	30			
Eastern	Ganta Afeshum	Male	13	18	3	78	1	113	117	23-Aug-16	Conflict	During 2016
Eastern	Ganta Afeshum	Female	13	14	3	41	-	71	117			
Eastern	Gulomekeda	Male	22	64	48	82	38	254	126	15-Feb-15	Conflict	Before 2016
Eastern	Gulomekeda	Female	36	73	52	96	33	290	126			
Eastern	Hawzen	Male	7	3	2	120	-	132	100	28-Aug-16	Conflict	During 2016
Eastern	Hawzen	Female	3	6	2	30	-	41	100			
Eastern	Wukro Town	Male	8	11	12	33	1	65	49	20-Jul-16	Conflict	During 2016
Eastern	Wukro Town	Female	6	5	6	25	-	42	49			
<b>Eastern Total</b>			<b>147</b>	<b>284</b>	<b>240</b>	<b>930</b>	<b>90</b>	<b>1,691</b>	<b>1,480</b>			
Mekelle	Adihaki Sub City	Male	14	18	12	74	2	120	80	27-Aug-16	Conflict	During 2016
Mekelle	Adihaki Sub City	Female	11	13	8	64	1	97	80			
Mekelle	Ayder Sub City	Male	11	57	48	315	6	437	144	02-Sep-16	Conflict	During 2016
Mekelle	Ayder Sub City	Female	7	50	42	183	1	283	144			
Mekelle	Hadnet Sub City	Male	3	16	6	135	5	165	104	03-Aug-16	Conflict	During 2016
Mekelle	Hadnet Sub City	Female	6	19	5	82	3	115	104			
Mekelle	Hawelti Sub City	Male	34	51	57	113	9	264	134	15-Oct-16	Conflict	During 2016
Mekelle	Hawelti Sub City	Female	39	37	41	102	5	224	134			
Mekelle	Kedamay Weyane Sub City	Male	14	35	12	214	4	279	294	29-Aug-16	Conflict	During 2016
Mekelle	Kedamay Weyane Sub City	Female	9	20	8	79	1	117	294			
Mekelle	Quiha Subcity	Male	3	7	4	58	2	74	52	05-Sep-16	Conflict	During 2016
Mekelle	Quiha Subcity	Female	4	8	2	21	1	36	52			





International Organization for Migration (IOM)  
The UN Migration Agency

ANNEX I : INTERNAL DISPLACEMENTS IN TIGRAY REGION AS OF DECEMBER 2017												
Zone	Woreda	Sex	Age Groups					Total	HHs	Site Open Date	Cause	Duration
			Infants (0-4 y)	Children (5-14 y)	Youth (15-17 y)	Adults (18-59 y)	Elderly (60 +y)					
Mekelle	Semen Sub City	Male	84	195	84	304	33	700	379	02-Aug-16	Conflict	During 2016
Mekelle	Semen Sub City	Female	47	139	107	174	28	495	379			
<b>Mekelle Total</b>			<b>286</b>	<b>665</b>	<b>436</b>	<b>1,918</b>	<b>101</b>	<b>3,406</b>	<b>2,374</b>			
North Western	Asgede Tsimbila	Male	4	3	10	21	3	41	81	18-Aug-16	Conflict	During 2016
North Western	Asgede Tsimbila	Female	8	16	12	38	5	79	81			
North Western	Laelay Adiyabo	Male	15	8	5	34	-	62	67	07-Aug-16	Conflict	During 2016
North Western	Laelay Adiyabo	Female	10	5	2	26	-	43	67			
North Western	Medebay Zana	Male	-	4	1	27	-	32	34	08-Aug-16	Conflict	During 2016
North Western	Medebay Zana	Female	2	4	2	7	-	15	34			
North Western	Sheraro Town	Male	7	10	3	27	-	47	40	08-Aug-16	Conflict	During 2016
North Western	Sheraro Town	Female	4	4	2	23	-	33	40			
North Western	Shire Endaselasia	Male	126	257	35	666	26	1,110	848	03-Aug-16	Conflict	During 2016
North Western	Shire Endaselasia	Female	138	230	23	517	9	917	848			
North Western	Tselemti	Male	14	8	21	69	14	126	112	14-Aug-16	Conflict	During 2016
North Western	Tselemti	Female	9	11	27	41	7	95	112			
<b>North Western Total</b>			<b>337</b>	<b>560</b>	<b>143</b>	<b>1,496</b>	<b>64</b>	<b>2,600</b>	<b>2,364</b>			
South East	Degua Temben	Male	3	2	6	10	-	21	26	15-Aug-16	Conflict	During 2016
South East	Degua Temben	Female	4	2	4	8	-	18	26			
South East	Hintalo Wejirat	Male	8	22	4	64	2	100	52	08-Aug-16	Conflict	During 2016
South East	Hintalo Wejirat	Female	5	18	6	38	3	70	52			
South East	Saharti Samre	Male	-	2	6	24	-	32	25	25-Oct-17	Conflict	In 2017
South East	Saharti Samre	Female	-	3	3	10	-	16	25			
South East	Saharti Samre	Male	-	2	4	18	-	24	23	28-Oct-17	Conflict	In 2017
South East	Saharti Samre	Female	-	1	3	7	-	11	23			
<b>South East Total</b>			<b>20</b>	<b>52</b>	<b>36</b>	<b>179</b>	<b>5</b>	<b>292</b>	<b>252</b>			
Southern	Alamata	Male	17	25	10	53	4	109	75	17-Aug-16	Conflict	During 2016
Southern	Alamata	Female	11	14	7	38	-	70	75			
Southern	Korem Town	Male	5	4	-	18	-	27	23	30-Aug-16	Conflict	During 2016
Southern	Korem Town	Female	3	2	-	8	-	13	23			
Southern	Maychew	Male	4	11	9	52	-	76	41	16-Jul-16	Conflict	During 2016
Southern	Maychew	Female	3	7	5	37	-	52	41			
Southern	Raya Alamata	Male	76	61	28	36	8	209	82	20-May-16	Seasonal Flood	During 2016
Southern	Raya Alamata	Female	69	45	19	27	-	160	82			
Southern	Raya Alamata	Male	119	88	42	42	11	302	136	23-Jul-16	Seasonal Flood	During 2016
Southern	Raya Alamata	Female	129	74	50	34	15	302	136			
Southern	Raya Alamata	Male	16	13	11	8	7	55	29	14-Aug-17	Seasonal Flood	In 2017
Southern	Raya Alamata	Female	14	18	9	9	4	54	29			
Southern	Raya Alamata	Male	22	38	56	93	54	263	133	25-Aug-17	Seasonal Flood	In 2017
Southern	Raya Alamata	Female	10	20	32	54	20	136	133			
Southern	Raya Azebo	Male	9	20	11	55	2	97	50	24-Aug-16	Conflict	During 2016
Southern	Raya Azebo	Female	5	14	7	25	-	51	50			
<b>Southern Total</b>			<b>512</b>	<b>454</b>	<b>296</b>	<b>589</b>	<b>125</b>	<b>1,976</b>	<b>1,138</b>			
Western	Kafta Humera	Male	2	5	1	16	1	25	20	03-Aug-16	Conflict	During 2016
Western	Kafta Humera	Female	-	5	4	2	-	11	20			
Western	Kafta Humera	Male	8	19	2	119	8	156	197	08-Aug-16	Conflict	During 2016
Western	Kafta Humera	Female	10	23	3	69	1	106	197			



International Organization for Migration (IOM)  
The UN Migration Agency

**ANNEX I : INTERNAL DISPLACEMENTS IN TIGRAY REGION AS OF DECEMBER 2017**

Zone	Woreda	Sex	Age Groups					Total	HHs	Site Open Date	Cause	Duration
			Infants (0-4 y)	Children (5-14 y)	Youth (15-17 y)	Adults (18-59 y)	Elderly (60 +y)					
Western	Kafta Humera	Male	5	7	-	13	1	26	22	19-Aug-16	Conflict	During 2016
Western	Kafta Humera	Female	1	2	-	7	1	11	22			
Western	Kafta Humera	Male	1	5	-	28	1	35	46	25-Aug-16	Conflict	During 2016
Western	Kafta Humera	Female	4	8	-	17	-	29	46			
Western	Setit Humera	Male	19	33	2	307	12	373	481	20-Jul-16	Conflict	During 2016
Western	Setit Humera	Female	17	37	10	155	17	236	481			
<b>Western Total</b>			<b>67</b>	<b>144</b>	<b>22</b>	<b>733</b>	<b>42</b>	<b>1,008</b>	<b>1,532</b>			
<b>Grand Total</b>			<b>2,815</b>	<b>4,215</b>	<b>2,583</b>	<b>10,079</b>	<b>1,060</b>	<b>20,752</b>	<b>15,242</b>			

**Disclaimer:** Age and gender disaggregation for the site is extrapolated using a demographic calculator tool based on the age range and sex of the household members of 20 randomly selected households from the site.

**Displacement Tracking Matrix (DTM) conducted in collaboration with Danish Refugee Council (DRC)**



Humanitarian Aid  
and Civil Protection



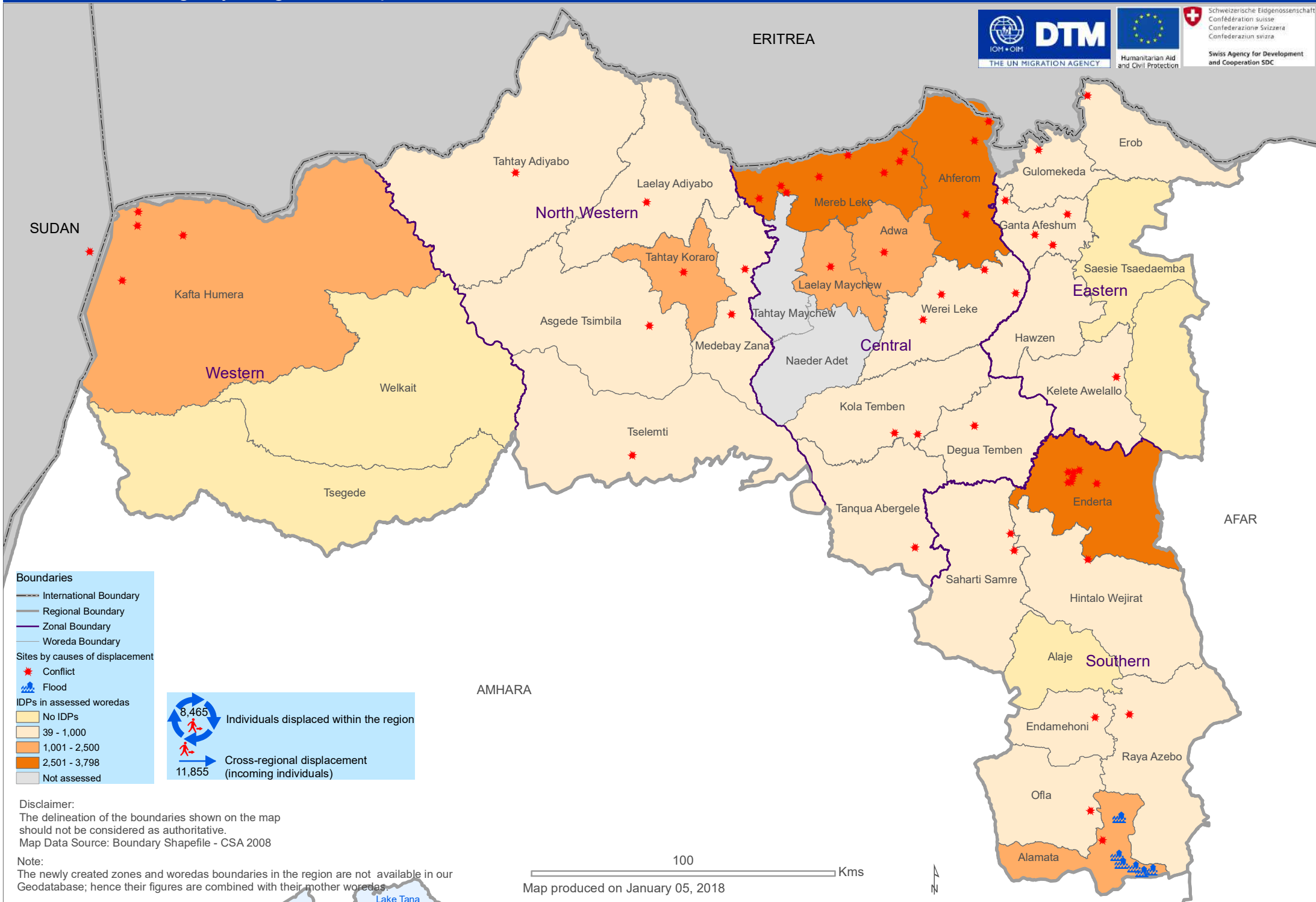
Schweizerische Eidgenossenschaft  
Confédération suisse  
Confederazione Svizzera  
Confederaziun Svizra  
Swiss Agency for Development  
and Cooperation SDC



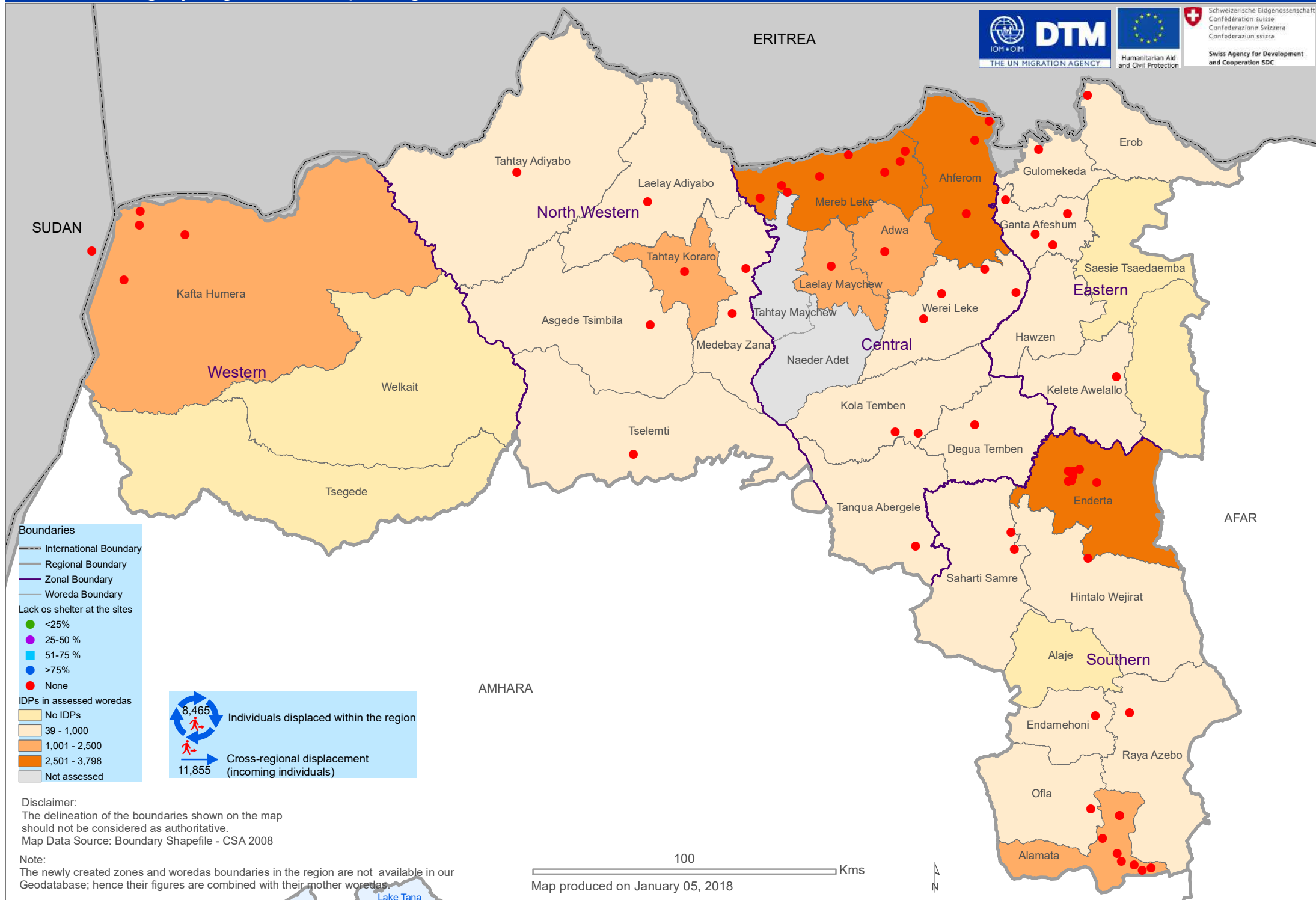
USAID  
FROM THE AMERICAN PEOPLE

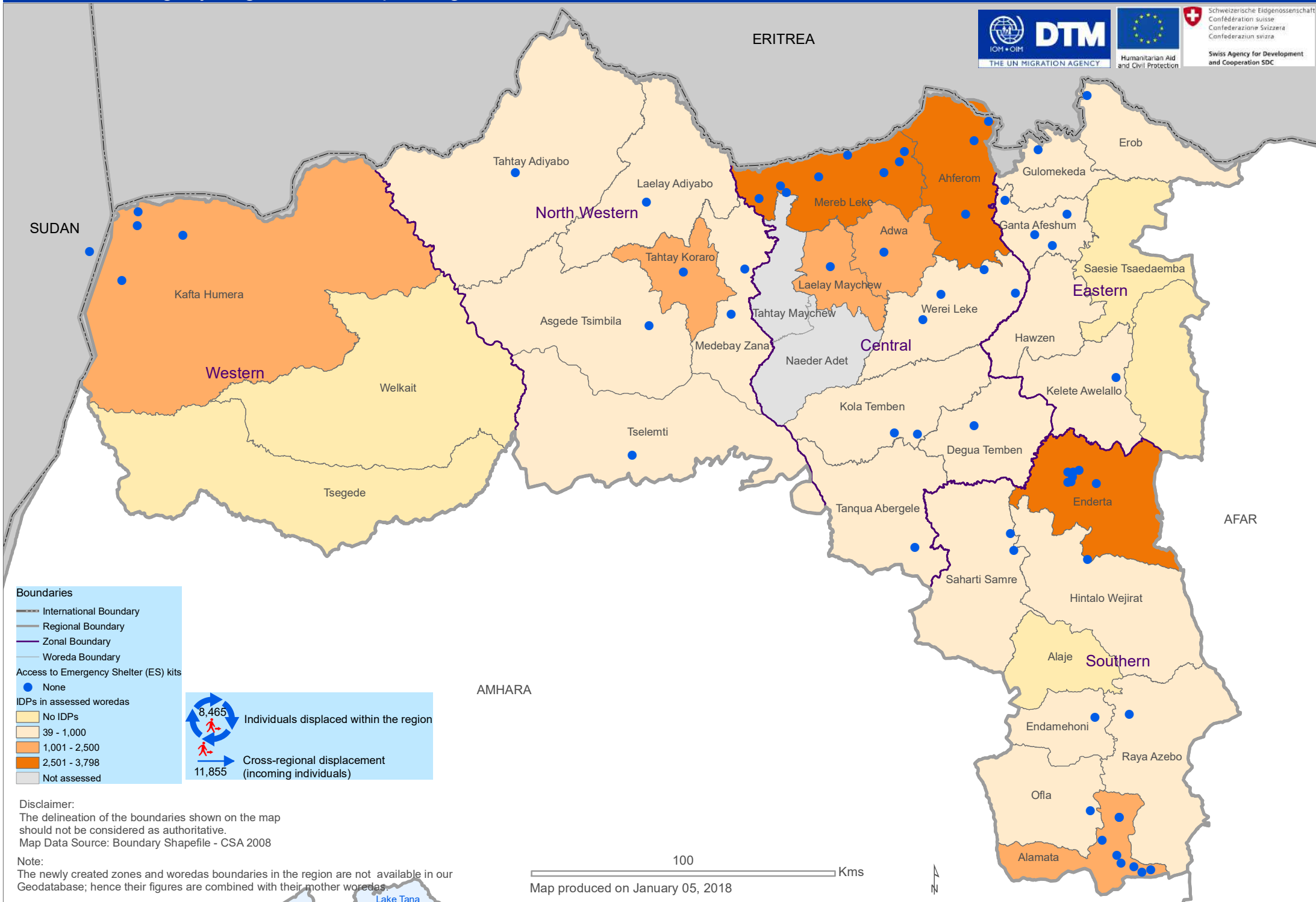
DTM made possible thanks to the European Civil Protection and Humanitarian Aid Operations (ECHO), the Ethiopian Humanitarian Fund (EHF), the Office of United States Foreign Disaster Assistance (OFDA) and the Swiss agency for Development and Cooperation (SDC).

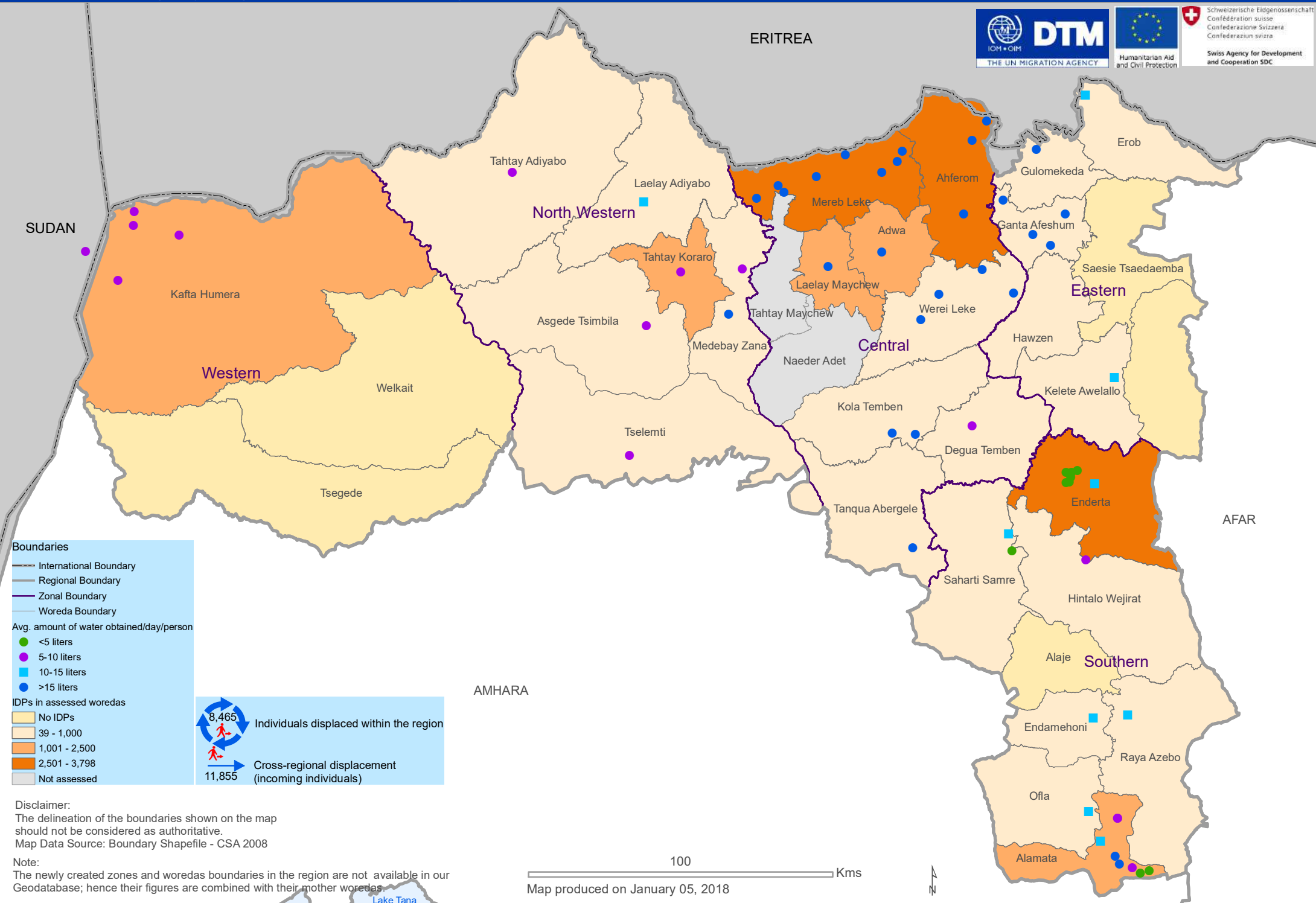
*The opinions expressed in this report are those of the authors and do not necessarily reflect the views of the Office of United States Foreign Disaster Assistance.*







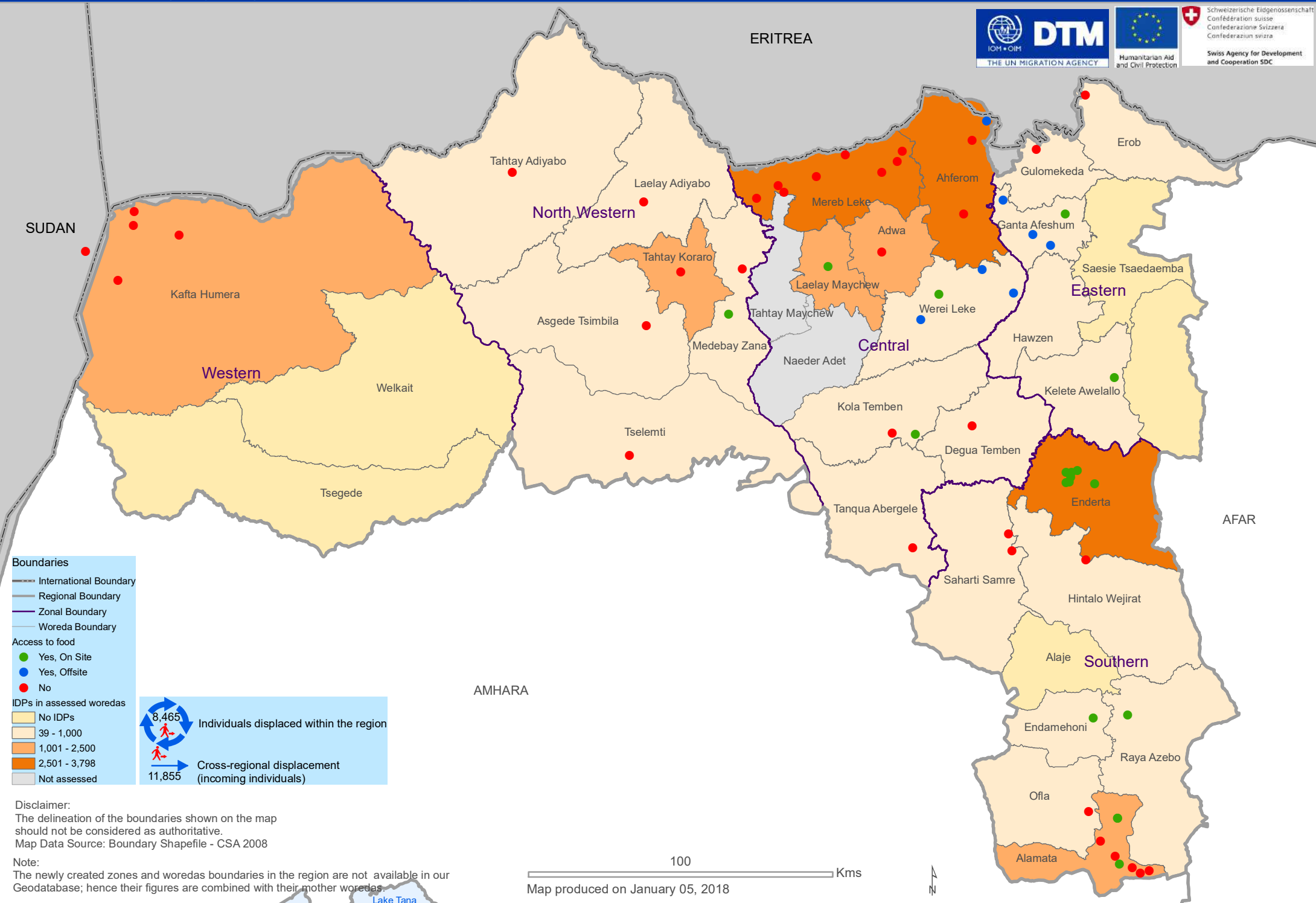




Disclaimer:  
The delineation of the boundaries shown on the map should not be considered as authoritative.  
Map Data Source: Boundary Shapefile - CSA 2008

Note:  
The newly created zones and woredas boundaries in the region are not available in our Geodatabase; hence their figures are combined with their mother woredas.





**Boundaries**

- International Boundary
- Regional Boundary
- Zonal Boundary
- Woreda Boundary

**Access to food**

- Yes, On Site
- Yes, Offsite
- No

**IDPs in assessed woredas**

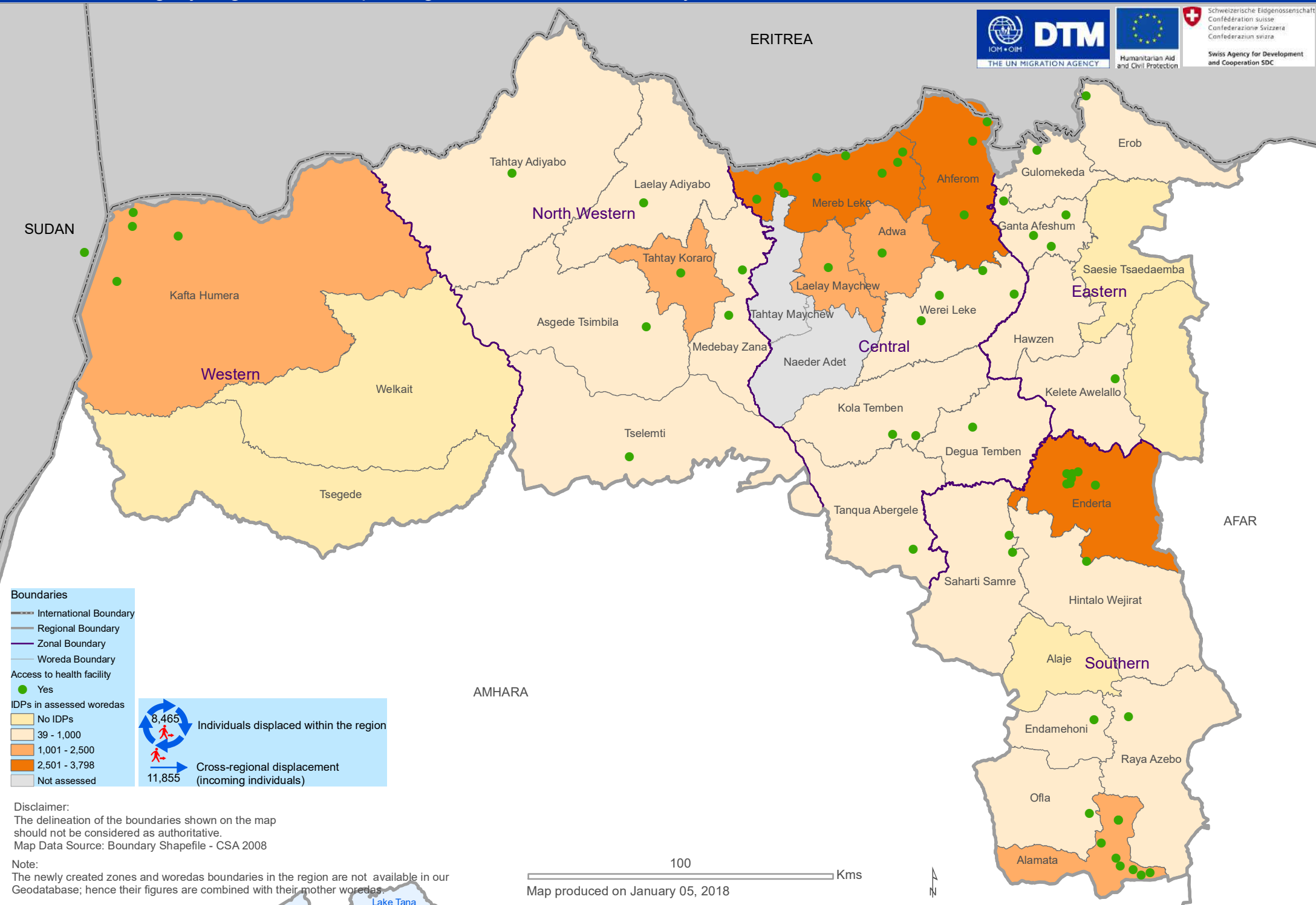
- No IDPs
- 39 - 1,000
- 1,001 - 2,500
- 2,501 - 3,798
- Not assessed

8,465 Individuals displaced within the region

11,855 Cross-regional displacement (incoming individuals)

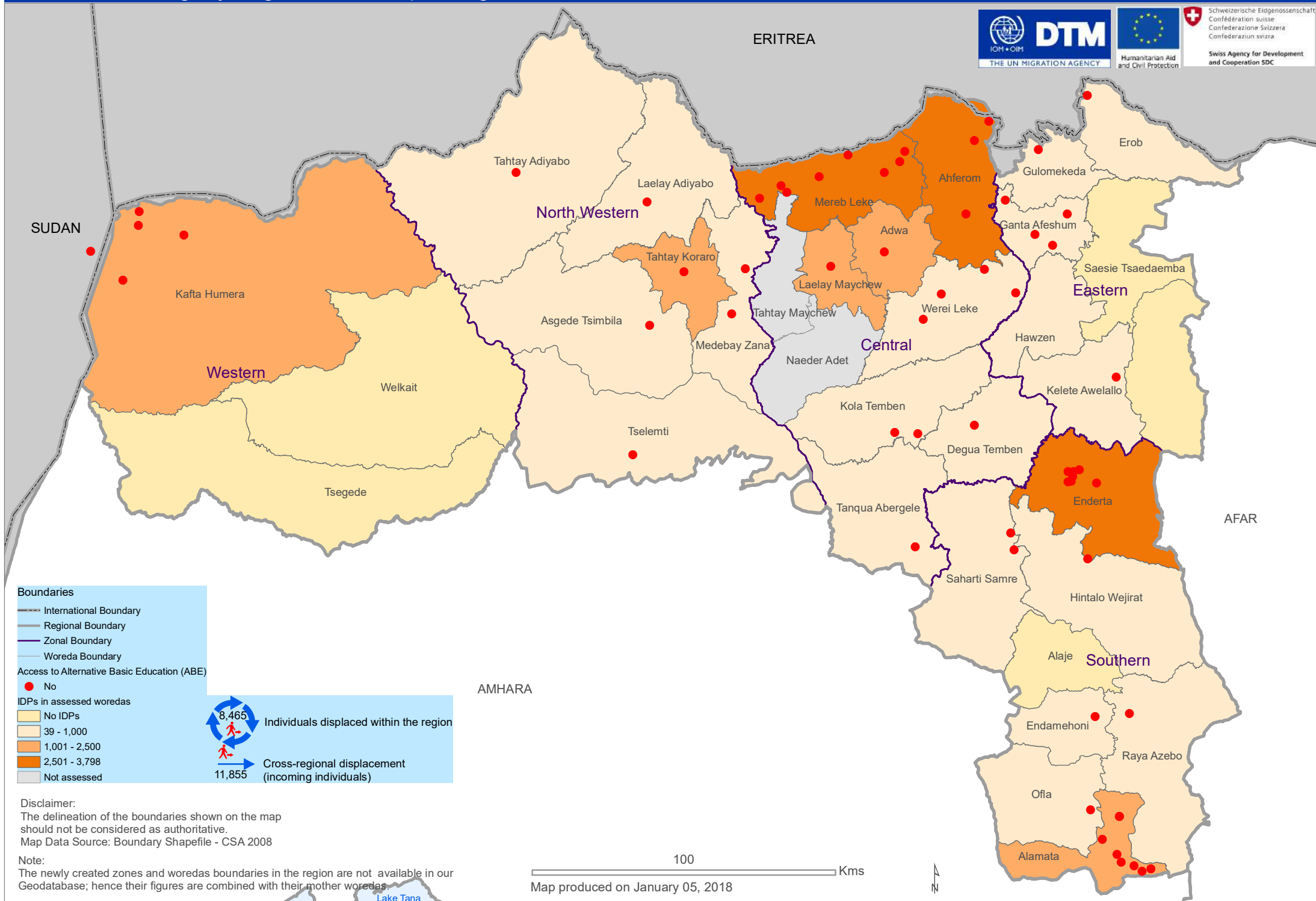
**Disclaimer:**  
 The delineation of the boundaries shown on the map should not be considered as authoritative.  
 Map Data Source: Boundary Shapefile - CSA 2008

**Note:**  
 The newly created zones and woredas boundaries in the region are not available in our Geodatabase; hence their figures are combined with their mother woredas.



Disclaimer:  
The delineation of the boundaries shown on the map should not be considered as authoritative.  
Map Data Source: Boundary Shapefile - CSA 2008

Note:  
The newly created zones and woredas boundaries in the region are not available in our Geodatabase; hence their figures are combined with their mother woredas.

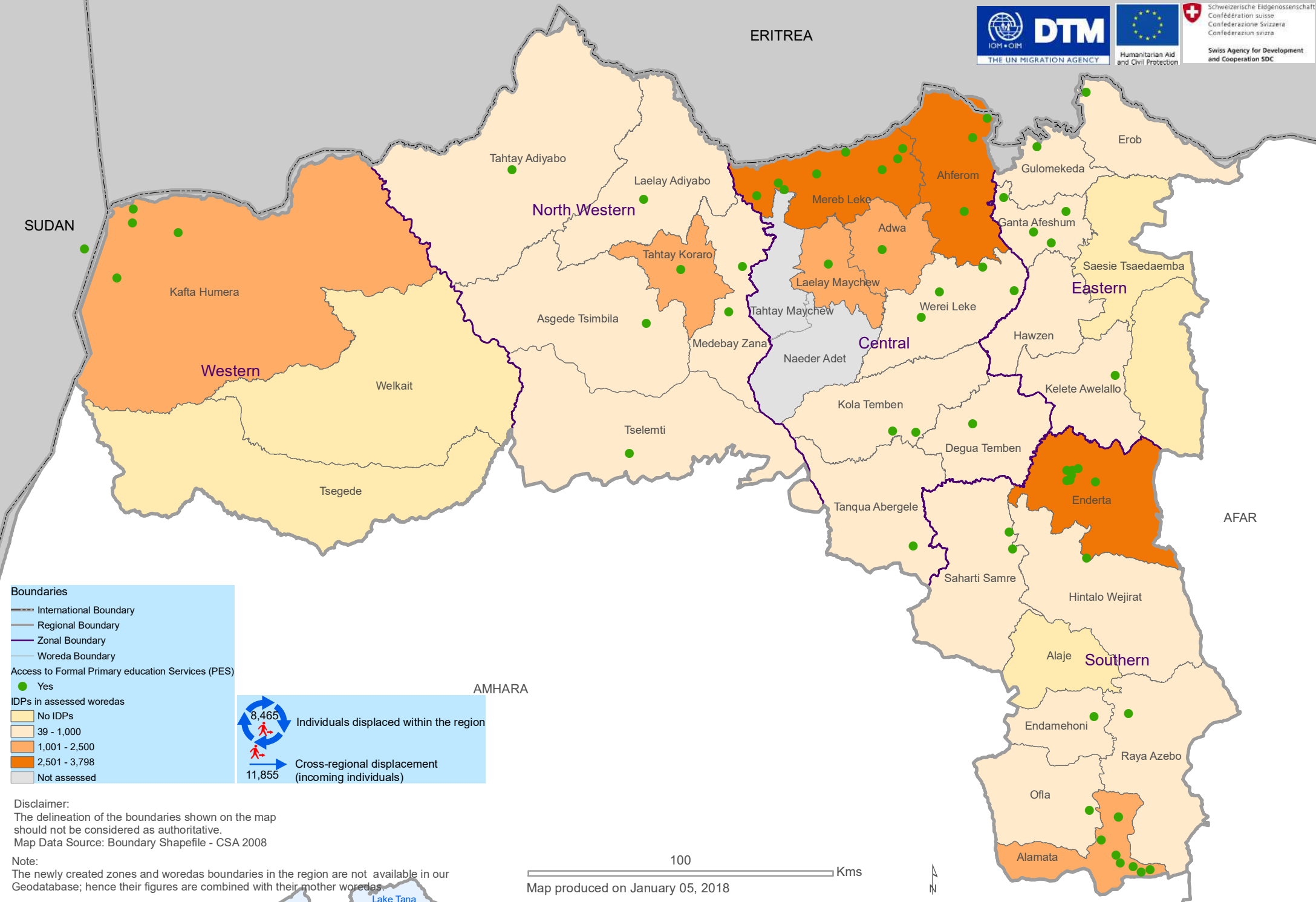






Schweizerische Eidgenossenschaft  
Confédération suisse  
Confederazione Svizzera  
Confederaziun svizra

Swiss Agency for Development and Cooperation SDC



**Boundaries**

- International Boundary
- Regional Boundary
- Zonal Boundary
- Woreda Boundary

**Access to Formal Primary education Services (PES)**

- Yes

**IDPs in assessed woredas**

- No IDPs
- 39 - 1,000
- 1,001 - 2,500
- 2,501 - 3,798
- Not assessed

8,465 Individuals displaced within the region

11,855 Cross-regional displacement (incoming individuals)

**Disclaimer:**  
The delineation of the boundaries shown on the map should not be considered as authoritative.  
Map Data Source: Boundary Shapefile - CSA 2008

**Note:**  
The newly created zones and woredas boundaries in the region are not available in our Geodatabase; hence their figures are combined with their mother woredas.

100 Kms  
Map produced on January 05, 2018