

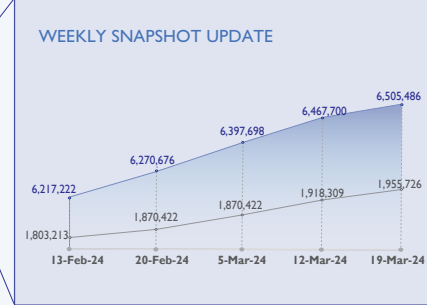
WEEKLY DISPLACEMENT SNAPSHOT (24)

19 March 2024

Displacement Data Reporting Date: 13 March 2024

Mixed Cross-Border Movement Reporting Date: 17 March 2024

(339) DAYS
From the start of the conflict



6,505,486 Displaced Individuals ↑ 37,786

1,299,890 IDP households ↑ 10,549

1,955,726 Mixed Cross-Border Movement ↑ 37,417

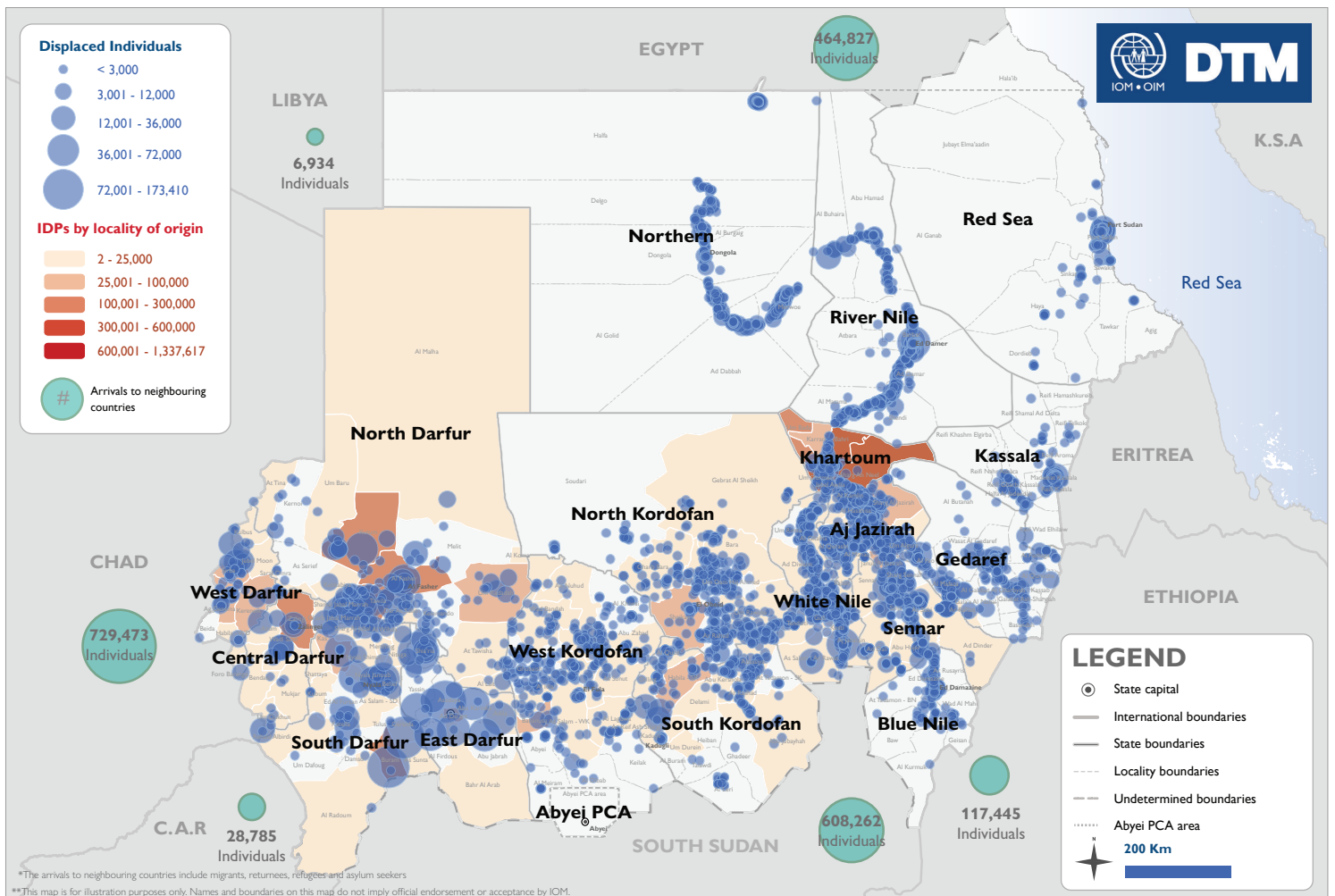
Overview

Since 15 April 2023, on-going armed clashes between the Sudanese Armed Forces (SAF) and the Rapid Support Forces (RSF) have led to widespread displacement. As a result of these clashes, DTM Sudan estimated that 6,505,486 individuals (1,299,890 households) were internally displaced, representing an increase of 37,786 individuals (10,549 households) since DTM Sudan's Weekly Displacement Snapshot 23. The internally displaced persons (IDP) caseload was observed in 6,991 locations across all of Sudan's 18 states.* The highest proportions of IDPs were observed across South Darfur (11%), River Nile (11%), and East Darfur (10%).

Field teams reported that the IDPs were originally displaced from twelve states. As reported, 55 per cent of IDPs were displaced from Khartoum state (3,556,673 IDPs), followed by South Darfur (15%), North Darfur (9%), Aj Jazirah (8%), Central Darfur (4%), West Darfur (4%), South Kordofan (2%), East Darfur (1%), West Kordofan (1%), North Kordofan (1%), Sennar (<1%), and White Nile (<1%).

DTM Sudan also estimated that approximately 2 per cent of the IDP caseload were non-Sudanese nationals.**

In addition to the internal displacement, the conflict in Sudan has caused the Mixed Cross-Border Movements of 1,955,726 individuals into neighbouring countries namely Egypt, Libya, Chad, Central African Republic, South Sudan and Ethiopia. Sixty-three per cent of arrivals tracked in those countries were Sudanese nationals and 37 per cent estimated foreign nationals and returnees. The majority of arrivals were reported in Chad (36%), South Sudan (31%), and Egypt (24%).*** This product provides a brief snapshot of the ongoing displacement across Sudan, post-15 April 2023. For more granular information on the humanitarian and displacement context, please see [DTM Sudan's Monthly Displacement Overview 06](#).



Map 1: Displacement across Sudan and into neighbouring countries since 15 April 2023.

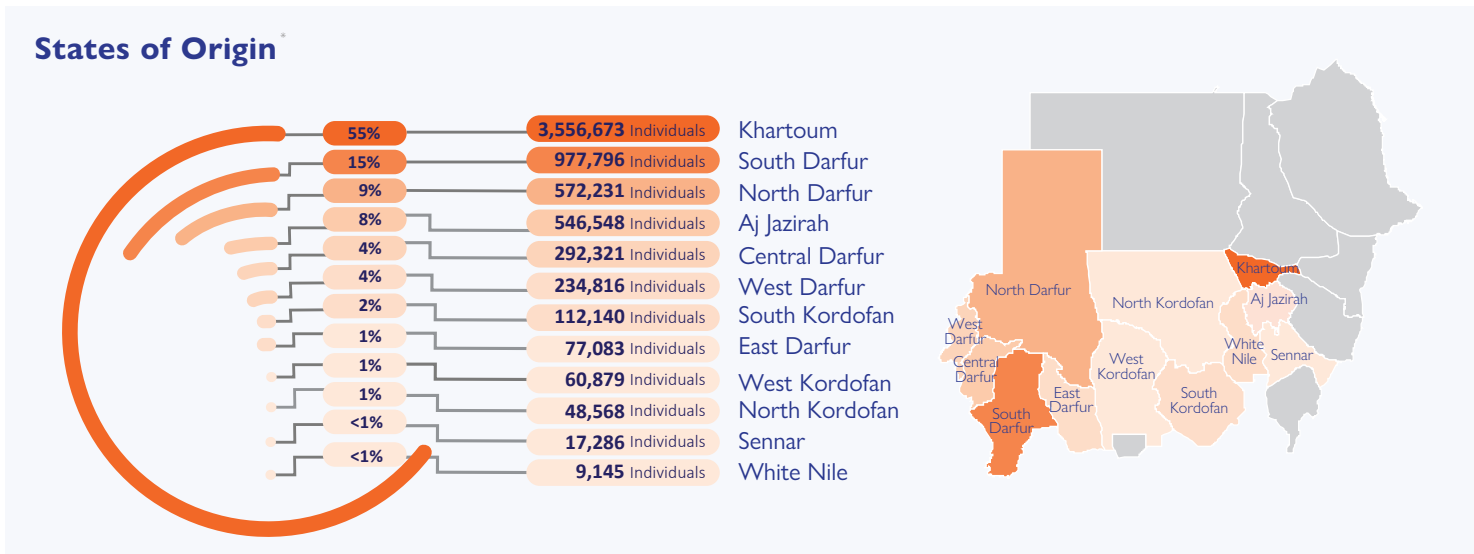
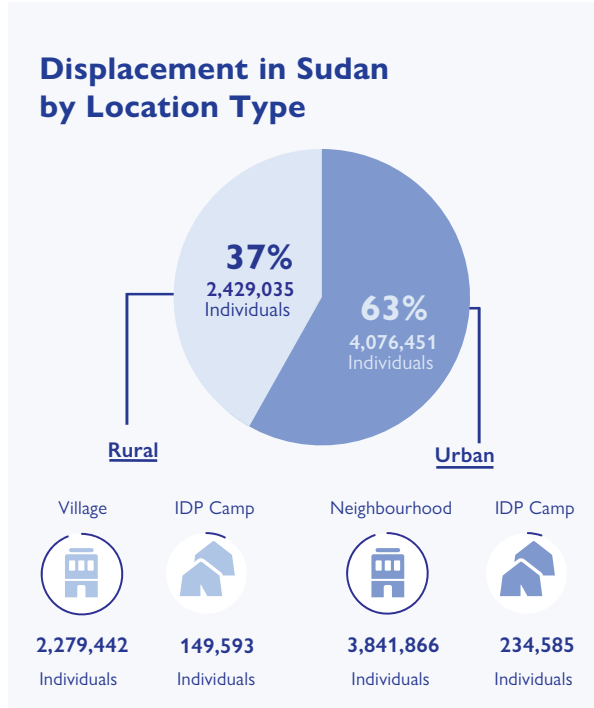
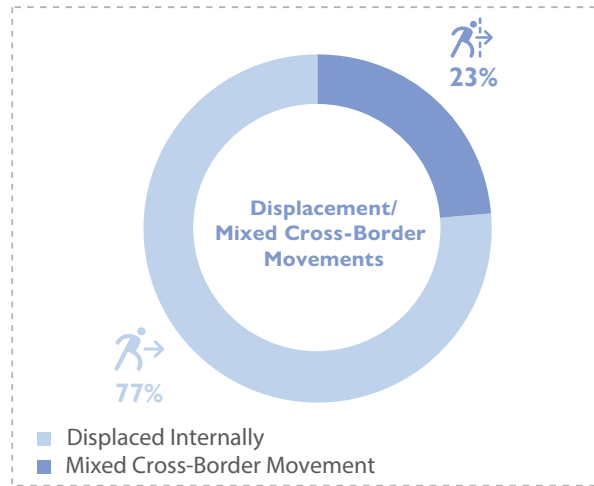
*The data from many locations has been gathered with the co-ordination of the Humanitarian Aid Commission.

**Field teams collect information on the displacement of foreign nationals in Sudan regardless of whether those individuals have sought international protection or not. Due to the ongoing operational limitations, DTM is currently unable to distinguish between those who have sought asylum and are registered as a refugee and those who are not.

*** Due to the ongoing operational limitations, DTM is currently unable to distinguish between those who sought asylum and are registered as refugee and those who are not. According to the last available update from the Ministry of Foreign Affairs as of 31 January 2024

States of Displacement	Snapshot 23 6 Mar 2024	Snapshot 24 13 Mar 2024	Difference	% Total IDPs*	Number of locations
Aj Jazirah	349,439	349,439	0	5%	1,492
Blue Nile	134,276	134,281	5 ↑	2%	136
Central Darfur	427,580	427,730	150 ↑	7%	38
East Darfur	663,770	663,990	220 ↑	10%	30
Gedaref	415,877	422,027	6,150 ↑	1%	311
Kassala	189,863	191,803	1,940 ↑	8%	239
Khartoum	50,005	53,402	3,397 ↑	2%	230
North Darfur	512,472	530,032	17,560 ↑	6%	128
North Kordofan	148,607	150,917	2,310 ↑	4%	537
Northern	402,220	404,019	1,799 ↑	11%	347
Red Sea	249,264	246,979	2,285 ↓	7%	238
River Nile	717,623	709,329	8,294 ↓	11%	930
Sennar	466,187	469,297	3,110 ↑	7%	382
South Darfur	743,853	744,053	200 ↑	12%	67
South Kordofan	162,892	173,327	10,435 ↑	3%	358
West Darfur	169,770	171,645	1,875 ↑	3%	55
West Kordofan	137,516	137,521	5 ↑	2%	535
White Nile	526,486	525,695	791 ↓	8%	938
Total	6,467,700	6,505,486	37,786	100%	6,991

Table 1: Overview of displacement by state



Disclaimer: DTM Sudan is a suite of methodological tools which aims to track and monitor displacement. DTM collects primary data, with a focus on providing best estimates for support to the wider humanitarian community. DTM Sudan notes that armed clashes remain continuous in many areas across Sudan. As such, DTM is currently collecting data through a dual combination of face-to-face and remote interviews with key informants across its network. Data on flows into neighbouring countries is based on available information from DTM flow monitoring networks and secondary sources. Figures should be treated as preliminary findings only and are subject to change via future verification exercises. Percentages across the report may not equal 100 per cent due to rounding.

*Total may not be 100 per cent due to rounding.

Shelter Categories (by households)*

States	Camps	Host Communities	Rented Accommodations	Improvised / Critical Shelters	Schools or Other Public Buildings	Open Area Informal Settlements
Aj Jazirah 68,999	-	85% 58,502	1% 449	-	14% 9,401	1% 647
Blue Nile 26,852	-	64% 17,053	34% 9,034	-	1% 345	2% 420
Central Darfur 85,546	14% 12,231	35% 29,685	-	4% 3,000	17% 14,295	31% 26,335
East Darfur 132,778	2% 2,892	79% 105,459	2% 2,426	2% 3,000	13% 17,378	1% 1,623
Gedaref 83,729	<1% 80	73% 61,464	15% 12,704	<1% 210	10% 8,742	1% 529
Kassala 38,628	-	70% 27,231	18% 7,094	-	10% 4,053	1% 250
Khartoum 10,604	-	82% 8,649	18% 1,871	-	1% 84	-
North Darfur 105,945	17% 18,356	45% 48,019	<1% 368	2% 1,764	14% 14,922	21% 22,516
North Kordofan 29,629	-	93% 27,703	<1% 142	1% 174	4% 1,281	1% 329
Northern 80,262	-	84% 67,812	7% 5,894	-	8% 6,551	<1% 5
Red Sea 49,497	-	51% 25,281	34% 16,790	3% 1,277	8% 3,760	5% 2,389
River Nile 144,363	-	78% 113,138	15% 21,519	<1% 3	7% 9,525	<1% 178
Sennar 93,717	-	86% 80,941	2% 1,705	-	4% 3,462	8% 7,609
South Darfur 148,810	18% 26,575	39% 58,569	-	4% 6,096	34% 50,395	5% 7,175
South Kordofan 34,266	-	62% 21,154	<1% 137	-	10% 3,496	28% 9,479
West Darfur 34,329	-	61% 21,072	-	3% 890	35% 11,896	1% 471
West Kordofan 27,061	-	87% 23,555	1% 377	-	10% 2,787	1% 342
White Nile 104,875	16% 16,782	64% 66,712	7% 7,141	-	11% 11,425	3% 2,815
TOTAL	6% 76,916	66% 861,999	7% 87,651	1% 16,414	13% 173,798	6% 83,112

Total Households: 1,299,890

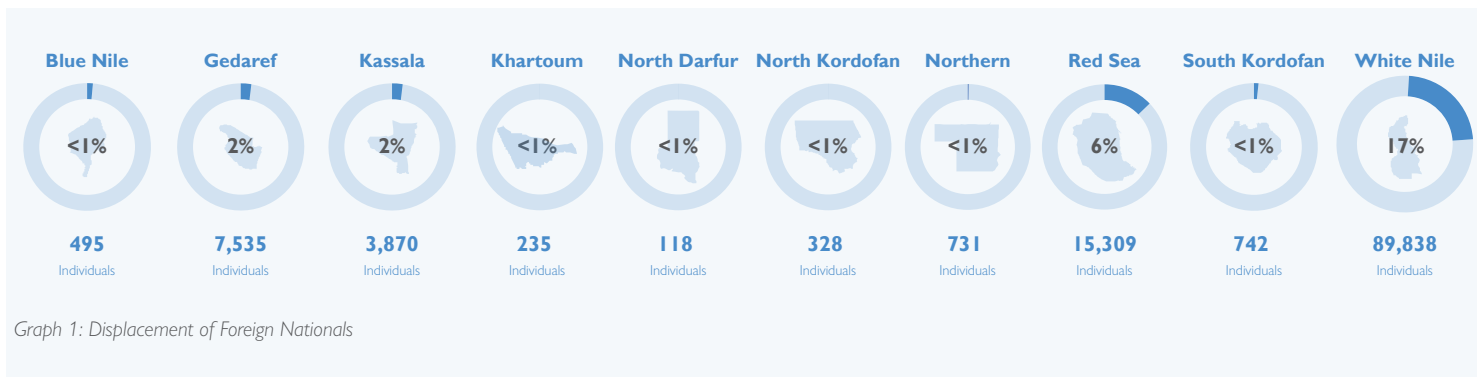
*Total may not be 100 per cent due to rounding.

Displacement of Foreign Nationals within Sudan

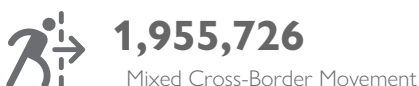


From the total reported IDP caseload, field teams indicated that 119,201 individuals were foreign nationals (approximately 2% of total IDPs across Sudan). Most foreign nationals (89,838 IDPs) were located in White Nile state – where they constituted 17 per cent of the IDP caseload in that state. By

comparison, foreign nationals constituted smaller proportions of the observed caseload in descending: Red Sea (6%), Kassala (2%), Gedaref (2%), South Kordofan (<1%), Khartoum (<1%), Blue Nile (<1%), North Kordofan (<1%), Northern (<1%), North Darfur (<1%), and North Darfur (<1%).

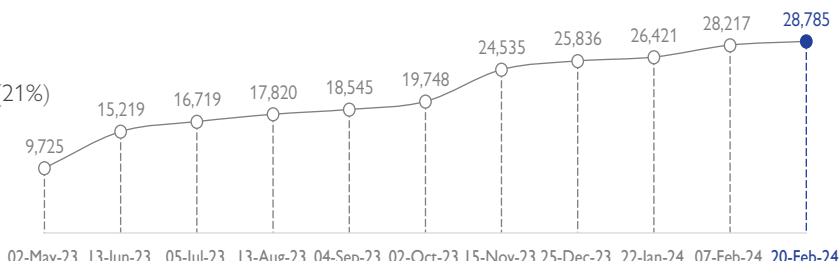
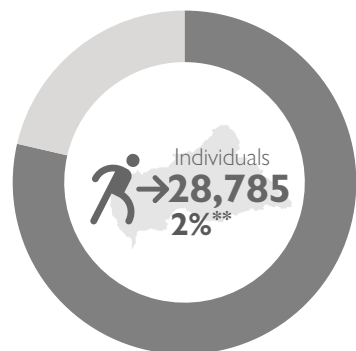


Mixed Cross-Border Movement



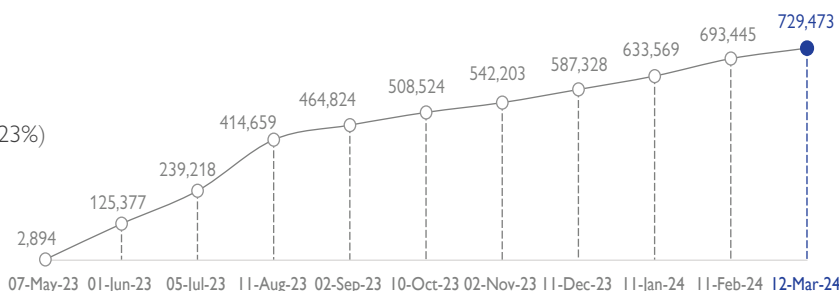
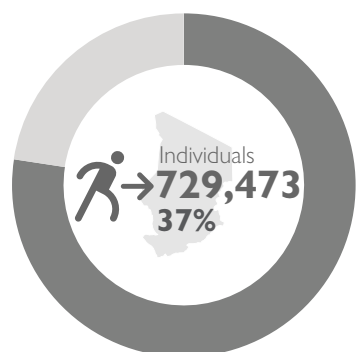
Since the onset of the conflict on 15 April 2023, DTM has noted substantial mixed cross-border movements involving both Sudanese and foreign nationals (including returnees). Field teams reported that these movements have proved challenging for communities. Security concerns, such as military clashes, or the breakdown in law and order in many areas, as well as steep fuel and transportation costs, and environmental events (such as flooding during the rainy season) have all impacted options for both domestic and cross-border travel.

CENTRAL AFRICAN REPUBLIC



Source: IOM, UNHCR, National Commission for Refugees (CNR)

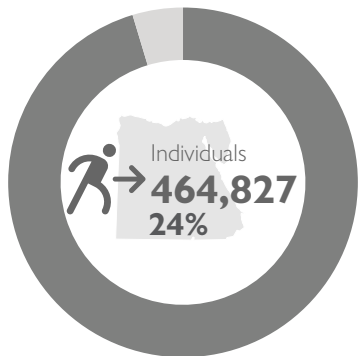
CHAD***



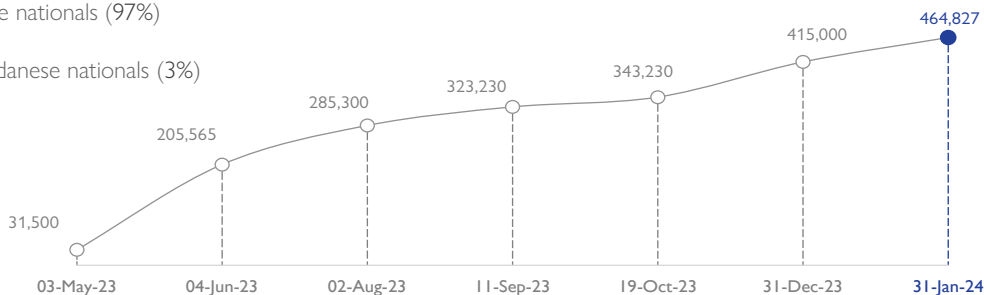
Source: IOM, UNHCR

*This percentage indicates the proportion of foreign nationals among the IDP caseload observed across all 18 states.
 **The per cent values represent the proportion of the total mixed cross-border movements recorded during this period.
 ***For more information on Mixed-Cross Border Movement to Chad, please visit [DTM Chad website](https://dtm.iom.int/sudan).

EGYPT*

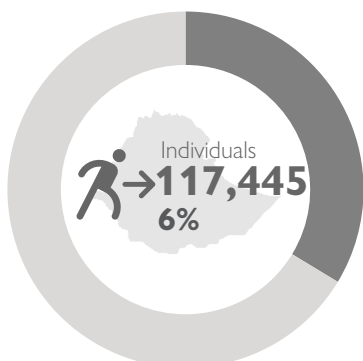


Source: Egypt Ministry of Foreign Affairs

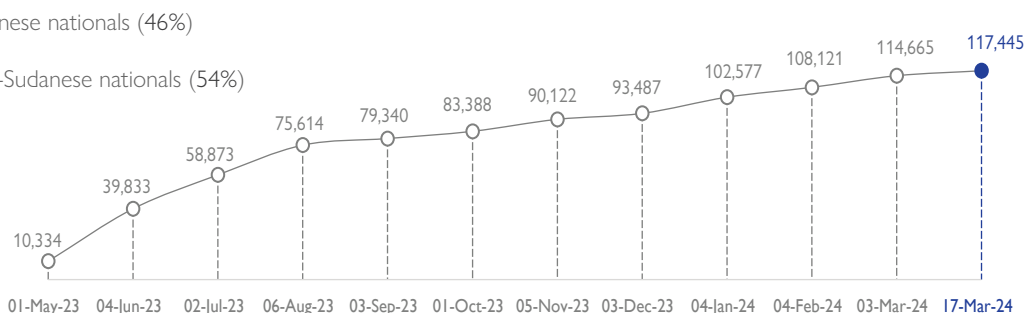


Graph 4: Timeline of Mixed Cross-Border Movement into Egypt

ETHIOPIA**

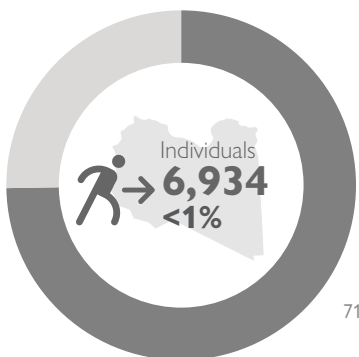


Source: IOM Ethiopia

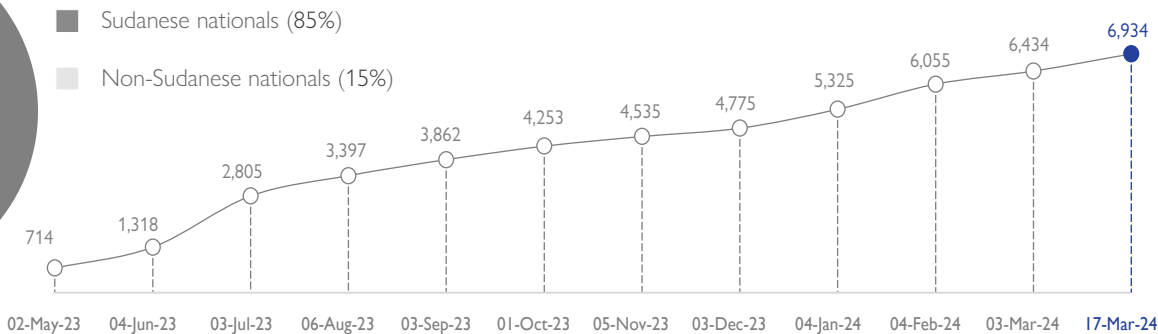


Graph 5: Timeline of Mixed Cross-Border Movement into Ethiopia

LIBYA***

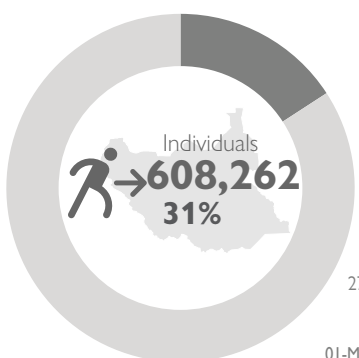


Source: IOM

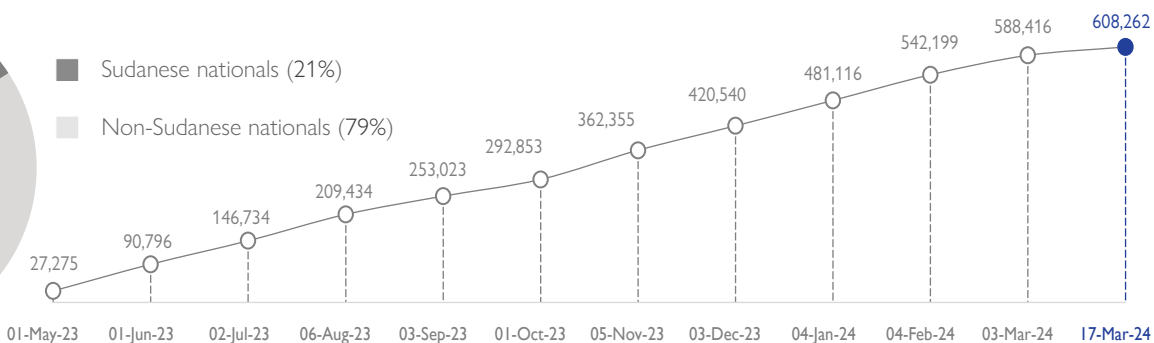


Graph 6: Timeline of Mixed Cross-Border Movement into Libya

SOUTH SUDAN****



Source: IOM, UNHCR



Graph 7: Timeline of Mixed Cross-Border Movement into South Sudan

*Due to the ongoing operational limitations, DTM is currently unable to distinguish between those who sought asylum and are registered as refugee and those who are not. According to the last available update from the Ministry of Foreign Affairs as of 31 January 2024.

** For more information on Mixed-Cross Border Movement to Ethiopia, please visit [Population Movement from Sudan to the East and Horn of Africa Dashboard](#)

*** For further information, see DTM Libya: [Profile of Sudanese Migrants in Libya \(March 2024\)](#)

**** For more information on Mixed-Cross Border Movement to South Sudan, please visit [Population Movement from Sudan to South Sudan Dashboard](#).

Disclaimer

All remaining figures for cross-border movement have been provided by DTM country focal points. Data is collected through DTM field teams, partners and national authorities. The data collection is based on DTM's flow monitoring and mobility tracking methodology.

With the support of:

