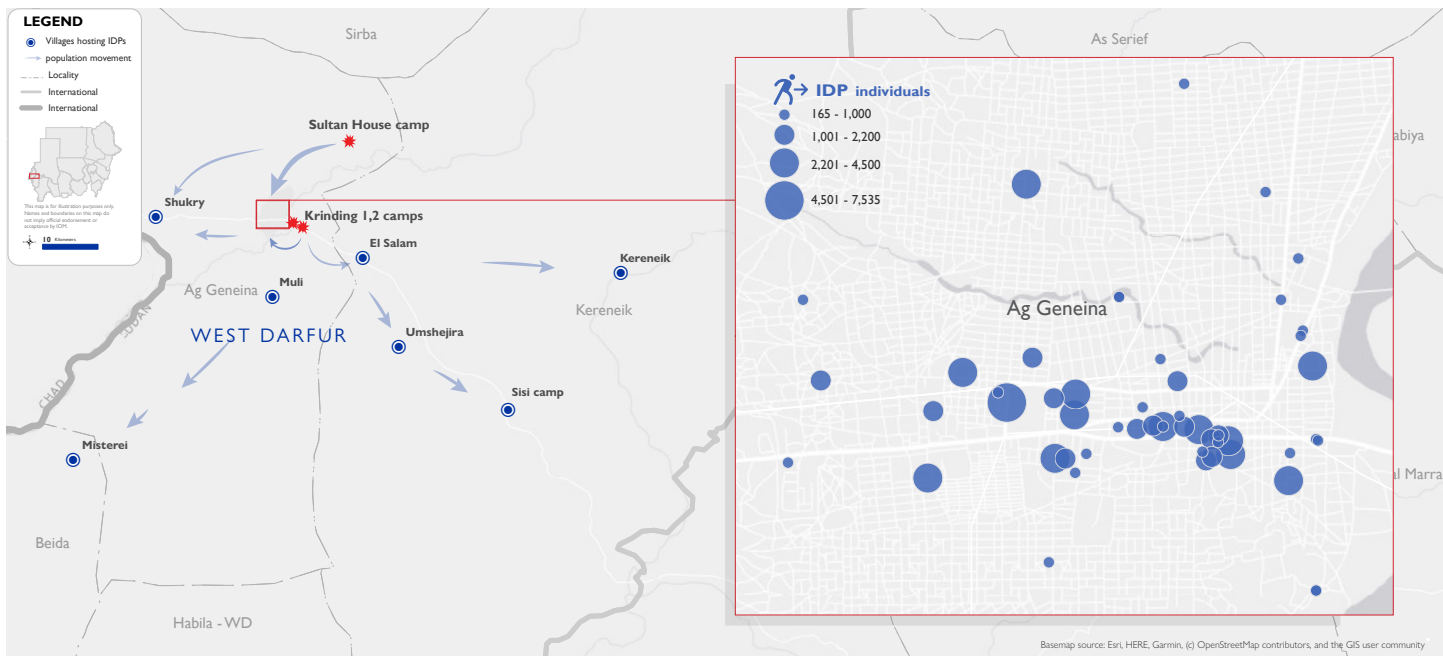
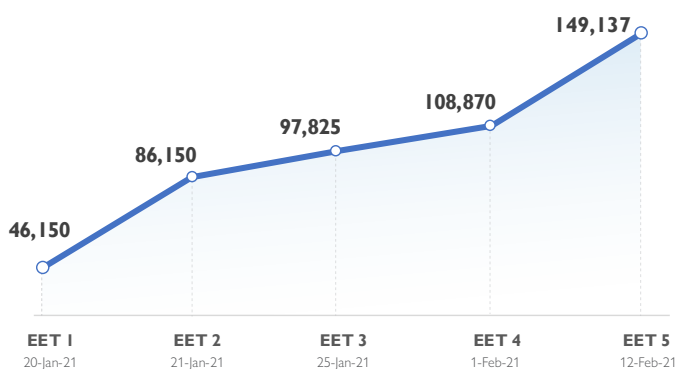




The DTM Emergency Event Tracking (EET) is deployed to track sudden displacement and population movements, provide more frequent updates on the scale of displacement, and quantify the affected population when needed. As a subcomponent of the new Mobility Tracking methodology in Sudan ([Round One](#)), and activated on a need basis, EET utilises a broad network of key informants to capture best estimates of the affected population presence per location – a useful tool for humanitarian response planning and design.



Event Overview



Graph 1: Number of IDPs by Emergency Event Tracking Date
 * Data illustrated in Graph 1 depicts the increasing caseload of IDPs as they were found, not as they were displaced.

Displaced Caseload Located Outside of Ag Geneina Town

Displacement sites	# IDP Individuals	# IDP Households
El Salam and Umshejira	40,000	8,000
Muli	9,650	1,930
Kereneik	8,955	1,791
Shukry	3,950	790
Misterei	1,350	270
Sisi Camp	950	190
Grand Total	64,855	12,971

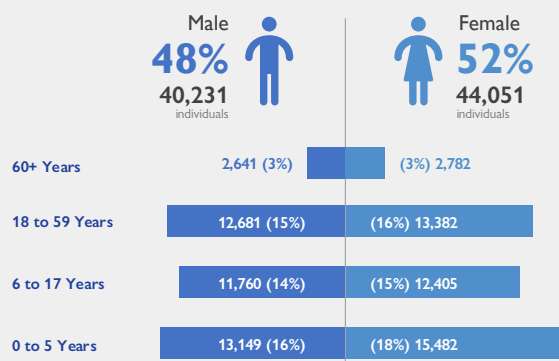
Table 1: Displaced Caseload Located Outside of Ag Geneina Town

DTM teams activated EET to monitor the displacement of individuals affected by inter-communal conflict between Masalit and Arab tribes. Clashes erupted on 16 January 2021 in the Krinding area of Ag Geneina town, West Darfur. For more information, please see [EET Ag Geneina, West Darfur 004](#).

The fifth update estimates a total number of 149,137 individuals (30,852 households) displaced across Ag Geneina and its surrounding villages. Since the fourth EET, there has been a 37 per cent increase in the captured number of individuals displaced, including an additional caseload of 20,762 individuals in Ag Geneina town, 9,050 individuals in Muli village, 950 individuals in Shukry village, 550 individuals in Sisi camp and 8,955 individuals now gathering in open areas of a new location (Kereneik village). All individuals are Sudanese nationals. DTM teams continue to report at least 8,981 individuals to have additional vulnerabilities in need of assistance and support. With no new losses indicated, reports identify 393 individuals have been killed and 473 sustained injuries, whilst at least 8,596 internally displaced persons (IDPs) have lost personal belongings and livestock (214 pertaining to the new caseload). Based on a ranking scale, the three main priority needs in Ag Geneina town are food, non-food items and WASH (water, sanitation, and hygiene).

With tensions extremely high and volatile, DTM teams are continuing to collect data from the surrounding villages of Ag Geneina from key informants via telephone. As soon as the situation allows, teams will visit these sites of displacement in order to verify the data and provide best estimates on the entire displaced caseload.

Demographics



* Demographics apply only to the caseload of IDPs located in Ag Geneina town (84,282 individuals at present).

Priority Needs

(Ranking scale)



* Priority needs apply only to the caseload of IDPs located in Ag Geneina town (84,282 individuals at present).

Through its shelter indicator, DTM identified 96,232 (64%) of the IDP individuals sheltering in 170 schools and other public buildings dispersed across Ag Geneina town, as well as Misterei and Muli villages and Sisi camp. The remaining 52,905 IDPs (36%) are gathering in open areas of El Salam, Umshejira, Shukry and Kereneik villages.

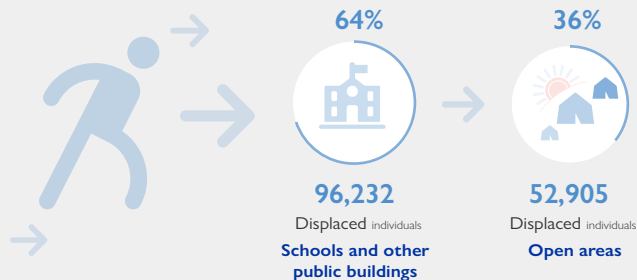
Of the 84,282 IDPs located in Ag Geneina town, 44,051 (52%) are female and 40,231 (48%) are male. Further disaggregation by age indicates 0 to five as the predominant age category (18% female, 16% male), followed by ages 18 to 59 (16% female, 15% male), six to 17 (15% female, 14% male) and 60 and over (3% female, 3% male).

At least 8,981 cases of additional vulnerabilities in need of further support and assistance were identified through DTM's protection indicator. Lactating and pregnant women made up 33 and 22 per cent respectively, followed by single parents (10%), malnourished (9%), elders providing care to their households (8%), physical disabilities (5%), chronic illnesses (4%), mental illnesses (3%), unaccompanied elders (3%), unaccompanied minors (2%) and missing family members (1%).

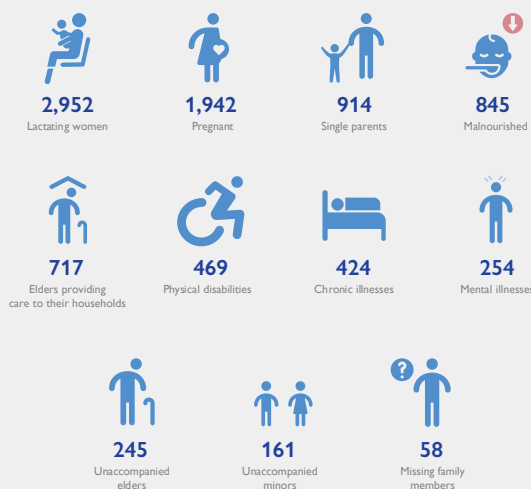
Based on a ranking scale, the three main priority needs for the displaced caseload in Ag Geneina town are identified as food, non-food items and WASH (water, sanitation and hygiene). Urgent humanitarian assistance is needed.

Data on return intention, demographics, protection indicators and priority needs are subject to further verification through registration activities. Displacement figures collected through this activity are further refined with each data collection round to reduce any discrepancies that may result from the miscorrelation of the EET methodology and that of DTM registration activities linked to direct humanitarian assistance.

Shelter Indicator



Vulnerabilities



* Vulnerabilities apply only to the IDP caseload captured in Update Four (63,520 individuals located in Ag Geneina town).

Return Intention

Data collected through the return intention indicator suggests that the majority of IDPs in Ag Geneina town intend to return to their locations of origin (67%) upon improvement of the security situation. The intention of the remaining caseload (33%) is unknown.

* Return intentions apply only to the caseload of IDPs located in Ag Geneina town (84,282 individuals at present).

IOM DISCLAIMER

The opinions expressed in the report are those of the authors and do not necessarily reflect the views of the International Organization for Migration (IOM). The designations employed and the presentation of material throughout the report do not imply the expression of any opinion whatsoever on the part of IOM concerning the legal status of any country, territory, city or area, or of its authorities, or concerning its frontiers or boundaries.

IOM is committed to the principle that humane and orderly migration benefits migrants and society. As an intergovernmental organization, IOM acts with its partners in the international community to: assist in the meeting of operational challenges of migration; advance understanding of migration issues; encourage social and economic development through migration; and uphold the human dignity and well-being of migrants.