

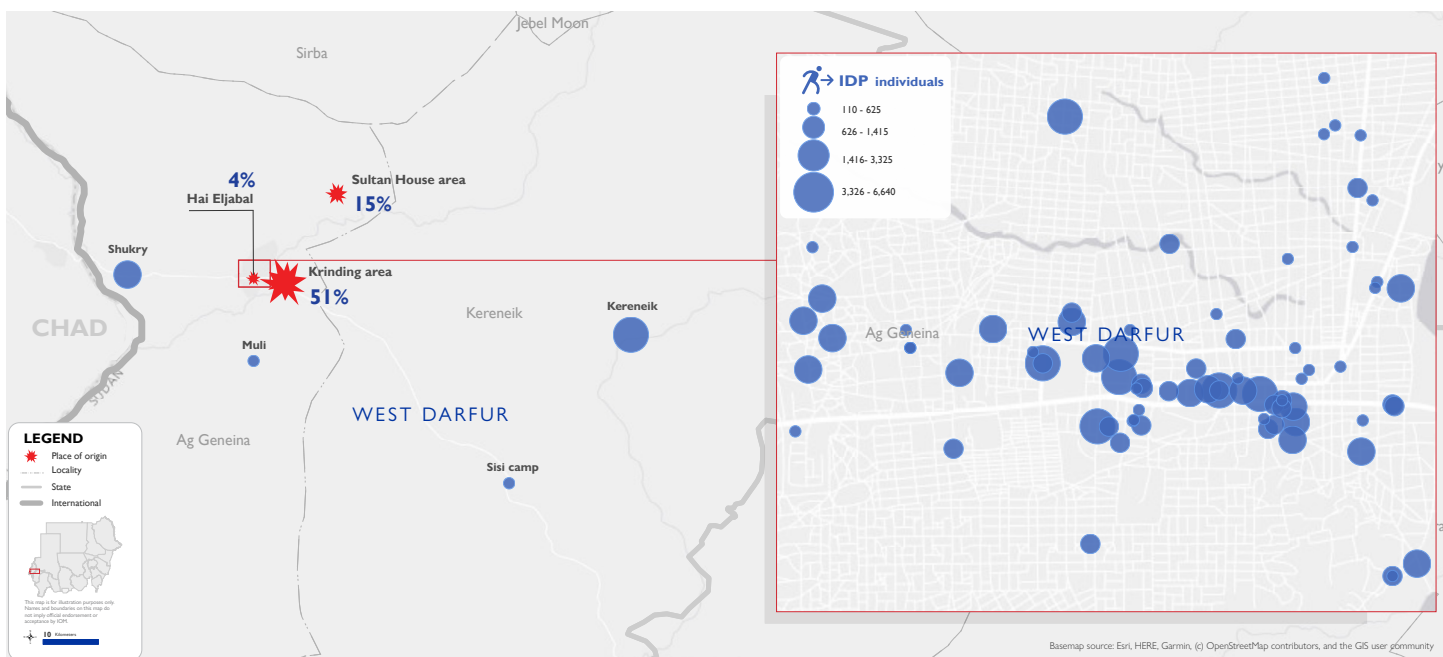
EMERGENCY EVENT TRACKING

Data collection: 11 – 16 March 2021

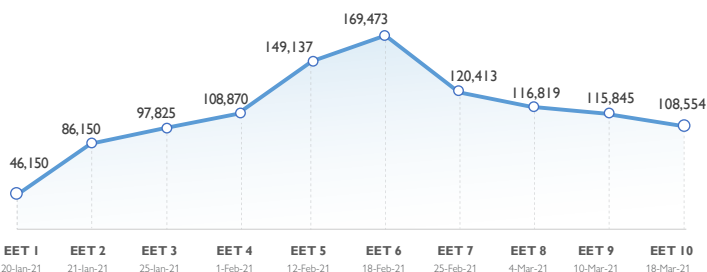
CONFLICT



The DTM Emergency Event Tracking (EET) is deployed to track sudden displacement and population movements, provide more frequent updates on the scale of displacement, and quantify the affected population when needed. As a subcomponent of the new Mobility Tracking methodology in Sudan ([Round One](#)), and activated on a need basis, EET utilises a broad network of key informants to capture best estimates of the affected population presence per location – a useful tool for humanitarian response planning and design.



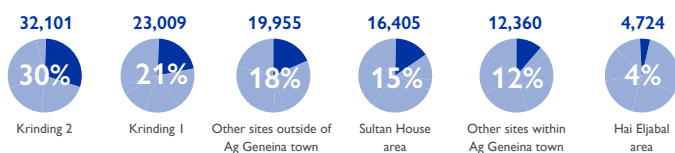
## Event Overview



Graph 1: Number of IDPs by Emergency Event Tracking Date

\* Data illustrated on Graph 1 depicts the increasing caseload of IDPs as they were found, not as they were displaced.

### Places of Origin<sup>3</sup>



### Displaced Caseload Located Outside of Ag Geneina Town

Displacement sites	# IDP Individuals	# IDP Households
Kereneik	6,640	1,328
Shukry	2,250	450
Muli	470	95
Sisi camp	175	35
<b>Grand Total</b>	<b>9,535</b>	<b>1,908</b>

DTM teams activated EET to monitor the displacement of individuals affected by inter-communal conflict between Masalit and Arab tribes. Clashes erupted on 16 January 2021 in the Krinding area of Ag Geneina town, West Darfur. For more information, please see [EET Ag Geneina, West Darfur\\_009](#).

The tenth update estimates a total number of 108,554 individuals (22,250 households) seeking shelter in Ag Geneina and its surrounding villages, having been displaced from Krinding 1 and 2 IDP camps (51%), Sultan House area (15%), Hai Eljabal area (4%) and other sites nearby (30%). All displaced individuals are Sudanese nationals. Since the ninth update, there has been a six per cent decrease in the captured number of individuals displaced, including a decrease of 2,356 individuals (2%) in Ag Geneina town due to ongoing verification by DTM field teams. Furthermore, there has been a decrease of 2,315 individuals (2%) in Kereneik village, 1,700 individuals (1%) in Shukry village, 775 individuals in Sisi camp and 130 individuals (1%) in Muli village – all having returned to their locations of origin since the previous update. The remaining caseload of 15 individuals in Misterei village also returned to Noro, Beida locality, due to security improvements.

DTM teams have visited the surrounding villages of Ag Geneina since the previous update, to verify the data and provide best estimates on the entire caseload across all displacement sites. Subsequently, at least 14,226 individuals are reported to have additional vulnerabilities in need of assistance and support.<sup>1</sup> DTM teams identify 166 individuals have been killed and 427 sustained injuries, whilst at least 7,773 internally displaced persons (IDPs) have lost personal belongings and livestock.<sup>2</sup> Based on a ranking scale, the three main priority needs for the displaced caseload in Ag Geneina town remain as WASH (water, sanitation, and hygiene), education, and health (medical needs). On the other hand, priority needs in the villages surrounding Ag Geneina town are identified as food, non-food items and WASH.

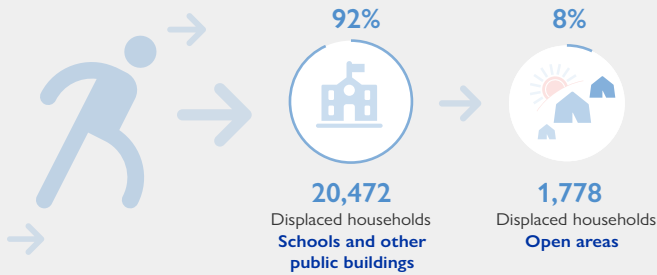
<sup>1</sup> Since the ninth EET update, there has been an increase of 971 reported vulnerabilities pertaining to the caseload of 9,535 individuals identified in the surrounding villages of Ag Geneina town.

<sup>2</sup> Since the ninth EET update, 13 related-deaths, 22 injuries and 198 IDPs having lost personal belongings and livestock were identified in the surrounding villages of Ag Geneina town.

<sup>3</sup> Where possible, the Krinding area has been further disaggregated into the respective villages of Droti, UmDuwin and Darelnaeem, as well as Krinding 1 and Krinding 2 IDP camps (reflected in EET 008, 009 and 010 datasets).



## Shelter Indicator



## Priority Needs (Ranking scale)

### AG GENEINA TOWN



### SURROUNDING VILLAGES



Through its shelter indicator, DTM identified 20,472 IDP households (92%) sheltering in schools and other public buildings dispersed across Ag Geneina town, as well as Muli village and Sisi camp. The remaining caseload of 1,778 IDP households (8%) are gathering in open areas of Shukry and Kereneik villages.

Of the 108,554 IDPs located in Ag Geneina town and its surrounding villages, 56,674 (52%) are female and 51,880 (48%) are male. Further disaggregation by age indicates 0 to five as the predominant age category (17% female, 15% male), followed by ages 18 to 59 (16% female, 15% male), six to 17 (15% female, 14% male) and 60 and over (4% female, 4% male).

At least 14,226 cases of additional vulnerabilities in need of further support and assistance were identified through DTM's protection indicator. Lactating and malnourished individuals made up 21 and 20 per cent respectively, followed by female-headed households (16%), pregnant women (14%), child-headed households (8%), elders providing care to their households (6%), single parents (6%), unaccompanied elders (4%), physical disabilities (2%), mental illnesses (1%), unaccompanied minors (1%) and chronic illnesses (1%). The new data collected since the seventh update on female and child-headed households is consistent with the higher percentage of female (sex) and child (age) demographics observed throughout the EET series.

Based on a ranking scale, the three main priority needs for the displaced caseload in Ag Geneina town remain as WASH (water, sanitation, and hygiene), education – relative to the number of displaced children unable to attend school – and health (medical needs). On the other hand, the three main priority needs for the displaced caseload in the villages surrounding Ag Geneina town are identified as food, non-food items and WASH.

Data on return intention, demographics, protection indicators and priority needs are subject to further verification through registration activities. Displacement figures collected through this activity are further refined with each data collection round to reduce any discrepancies that may result from the miscorrelation of the EET methodology and that of DTM registration activities linked to direct humanitarian assistance.



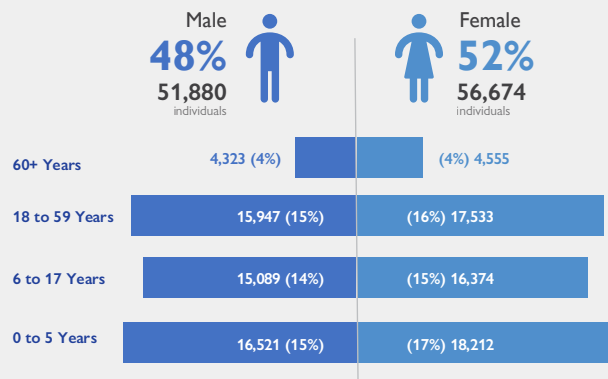
## Return Intention

Data collected through the return intention indicator suggests that all IDPs in Ag Geneina town and its surrounding villages (100%) intend to return to their locations of origin upon improvement of the security situation.

## Vulnerabilities



## Demographics



### IOM DISCLAIMER

The opinions expressed in the report are those of the authors and do not necessarily reflect the views of the International Organization for Migration (IOM). The designations employed and the presentation of material throughout the report do not imply the expression of any opinion whatsoever on the part of IOM concerning the legal status of any country, territory, city or area, or of its authorities, or concerning its frontiers or boundaries.

IOM is committed to the principle that humane and orderly migration benefits migrants and society. As an intergovernmental organization, IOM acts with its partners in the international community to: assist in the meeting of operational challenges of migration; advance understanding of migration issues; encourage social and economic development through migration; and uphold the human dignity and well-being of migrants.

