



Typhoon Haiyan Response

DISPLACEMENT TRACKING MATRIX (DTM)

JANUARY 31, 2014

The Displacement Tracking Matrix (DTM) is an information management tool used by the CCCM Cluster to gather baseline information on displaced populations and the conditions in the areas where they have temporarily settled. The DTM has been rolled out in over 30 countries including Haiti, Pakistan, Mali, The Democratic Republic of Congo and the Philippines. DTM was first rolled out in the Philippines in 2009 to support response efforts following Typhoon Ketsana.



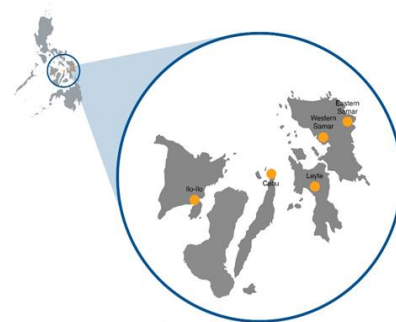
DSWD



IOM • OIM

Snapshot of 51 Total Existing Displacement Sites

CCCM		<ul style="list-style-type: none"> 85 % of all sites have camps managers 43 % of all sites - all IDPs have DAFAC Cards 51 % of all sites have no IDP camp committees
Shelter		<ul style="list-style-type: none"> 69 % of all sites have no safe cooking areas 82 % of all sites have no On-Site Electricity 55 % of all sites are vulnerable to natural hazards
Water, Sanitation and Hygiene (WASH)		<ul style="list-style-type: none"> 10 % of all sites have complaints on drinking water quality 27 % of all sites have Solid Waste Problems 65 % of all sites have no On-Site Water Sources 60 % of all sites have Drainage Problems
Health		<ul style="list-style-type: none"> 31 % of all sites - DOH has conducted SPEED Monitoring 65 % of all sites have no health services available
Education		<ul style="list-style-type: none"> 96 % of all sites - Children go to school 71 % of all sites have no informal education activities
Protection		<ul style="list-style-type: none"> 84 % of all sites have no Child Friendly Spaces 57 % of all sites have no 24 hour protection 45 % of all sites have protection issues reported



51 Displacement Sites



3,659 families



15,750 individuals



18 Evacuation Centers



14 Tent Cities



4 Spontaneous Settlements



15 Transitional Sites

**The Snapshots Section draws attention to the general situations and the urgent needs that require action in the camps.*

Typhoon Haiyan hit the Philippines on the 8th of November 2013. It was one of the most powerful typhoons to ever make landfall. Government estimates state that over 14 million people were affected by the typhoon across 9 regions, 44 provinces and 574 municipalities. 1.1 million houses were damaged at the cost of 27 billion pesos and over 5,000 evacuation centers were activated in preparation for the typhoon.

This issue comes a little less than three months from the date of the event. Data gathering for this issue of the DTM was done from January 13 – 23, 2014. Data collection was conducted using mobile devices equipped with the KoBo Toolbox which were donated by the Harvard Humanitarian Initiative (HHI). It covers Region 6, 7 & 8 where the five hubs of the Typhoon Yolanda response are and will provide summarized results of all 51 displacement sites from the three regions.

There are a total of **51 displacement sites** covered by this report and there are a total of **3,659 families** with **15,750 individuals**. The previous DTM issues in December 2013 covered 115 displacement sites coming from 29 municipalities, over double the present number.

There are only three Spontaneous Sites covered in this report but CCCM Cluster members acknowledge that there may be more sites and displaced families in Spontaneous Sites which we have not found and covered with our services.

FAST FACTS

Province with Largest EC Population: *Leyte Island 74 % of families*

City/Municipality with Largest EC Population: *Tacloban City - 66 % of families*

Most Number of Displacement Sites: *Leyte Province 59 % (Leyte and Samar Islands has 88 % of all sites)*

Total Bunkhouses Built in Tacloban City *is 51 and can house 25 % of Families in ECs.*

Displacement Sites Typology



Evacuation Centers

Pre-existing buildings established to accommodate the displaced families since the onset of a disaster. Evacuation centers (ECs) are usually schools, covered courts, gymnasiums, barangay halls, health centers and private buildings. (Photo: Ted Ajibe)



Transitional Sites

Sites established to temporarily host families facing displacement for more than a month and typically awaiting permanent relocation. Families are usually transferred from evacuation centers to these sites. Transitional sites host families in tents, bunkhouses or alternative transitional sites.



Tent Cities

Tents Cities are either set-up to house families from evacuation centers or formerly from host families or they could be set up by displaced families themselves after they have been provided by tents.



Spontaneous Settlements

Displaced family or families who live collectively outside of government designated evacuation centers or transitional sites. These families normally stay in open spaces dwelling in makeshift shelters on the roadside or near their homes and communities.

Section I: Summary of DTM Results Across All Five Hubs



Iloilo
Cebu City
Leyte
Western Samar
Eastern Samar

Location/ Type of Site	Evacuation Centers (EC)	Tent City (TC)	Spontaneous Settlements (SS)	Transitional Site (TS)	Total
Iloilo	1	2	1	0	4
Cebu City	0	1	0	0	1
Leyte	16	10	3	1	30
Western Samar	0	0	0	1	1
Eastern Samar	1	1	0	13	15
Total	18	14	4	15	51
Percentage	35 %	28 %	8 %	29 %	100 %
No. of Families	1994 (55%)	1187 (32%)	71 (2%)	407 (11%)	3659
No. of Individuals	8591(55%)	4941(31%)	291(2%)	1927(12%)	15750

Summary of the Population of Displacement Sites by Province and Types of Sites

There are a total of 51 displacement sites covered by this report with the highest number at 30 sites from the province of Leyte which covers Tacloban City, Palo Tanauan and Ormoc City. Ormoc City does

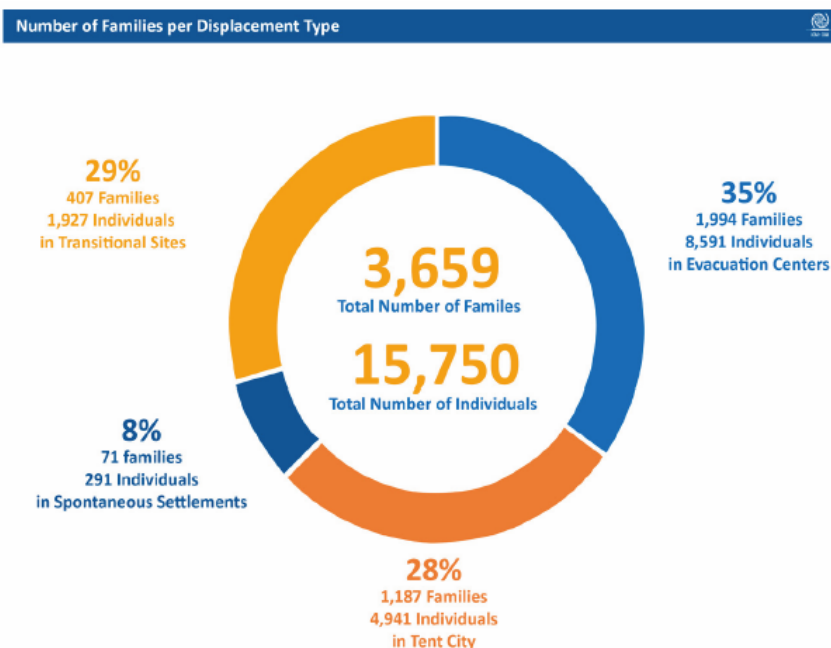
not have displacement sites still open at the time of this report but two bunkhouse sites in the city are expected to open soon.

Eastern Samar has 15 sites which include Borongan City and the Municipalities of Balangkayan, Giporlos, Guiuan, Hernani, Mercedes, Quinapondan and Salcedo. More municipalities with displacement sites will be added to Eastern Samar when the bunkhouse sites will open.

Western Samar has one bunkhouse site open and another bunkhouse site will open soon. Cebu has only one displacement site which is a Tent City and the Province of Iloilo has 4 displacement sites.

There are a total of 3,659 families in the displacement sites with 15,750 individuals.

In terms of site types and their populations, out of the 51 sites there are a total of 18 evacuation centers or 35% of all sites with 1,994 families, 14 tent cities or 28% of all sites with 1,187 families and 4 spontaneous settlements or 8% of all sites with 71 families and 15 transitional sites or 29% of all sites with 407 families.



Camp Coordination and Camp Management

In terms of Camp Management, we look at two indicators namely; if the site is being managed and has full time camp managers and whether the IDPs in the site have been organized into camp committees.

Out of 51 sites, 42 or 85% were observed to have camp managers which are either from DSWD, IOM or other CCCM Cluster members. Twenty-five sites or 49% however were observed not to have IDP camp committees.

In terms of registration of IDPs with the DSWD DAFAC registration cards, 22 sites (43%) said all were registered, 7 sites (14%) said some were registered and 22 sites (43%) said that none were registered.

Municipality/City	No. of Sites	Camp Management						
		Site Managed		Site w/ IDP Committee		IDPs W/ DSWD Cards		
		Yes	No	Yes	No	All	Some	None
Iloilo	4	0	4	1	3	2	0	2
Cebu City	1	1	0	1	0	1	0	0
Eastern Samar	15	14	1	11	4	6	0	9
Leyte	30	27	3	12	18	13	7	10
Western Samar	1	0	1	0	1	0	0	1
Totals	51	42	9	25	26	22	7	22
Percentage		85%	15%	49%	51%	43%	14%	43%



Camp Coordination and Camp Management encourages the creation of camp committees to promote a more participatory approach in managing evacuation centers. IDP involvement in camp activities is enhanced and strengthened.



Shelter

It was observed that only 16 sites or 31% had safe cooking areas and only 9 sites or 18% had On Site Electricity. In terms of safety from hazards from the weather and the environment, 23 sites or 45% were observed to be safe from hazards.

Municipality/City	No. of Sites	SHELTER					
		Safe Cooking Area		On Site Electricity		Not Vulnerable to Natural Hazards	
		Yes	No	Yes	No	Yes	No
Iloilo	4	2	2	2	2	3	1
Cebu City	1	1	0	0	1	0	1
Eastern Samar	15	12	3	5	10	5	10
Leyte	30	1	29	2	28	14	16
Western Samar	1	0	1	0	1	1	0
Total	51	16	35	9	42	23	28
Percentage		31 %	69 %	18 %	82 %	45 %	55 %



Water, Sanitation and Hygiene (WASH)

For this issue, we looked at two important indicators for WASH and saw that only 5 sites or 10 % had mentioned complaints on the quality of their drinking waters. In terms of whether their source of water is on site or off site, only 18 sites or 35 % said their source of water was On-site.

Looking into the surroundings and environment of the displacement sites, 14 sites or 27 % were observed to have a solid waste problem and 11 sites or 22 % did not have working drainage systems.

Municipality/City	No. of Sites	WASH							
		Complaints in Drinking Water		Source of Water		Solid Waste Problem		Drainage Problem	
		Yes	No	On-Site	Off-Site	Yes	No	Yes	No
Iloilo	4	0	4	1	3	1	3	0	4
Cebu City	1	0	1	1	0	0	1	1	0
Eastern Samar	15	1	14	1	14	2	13	0	15
Leyte	30	4	26	14	16	11	19	10	20
Western Samar	1	0	1	1	0	0	1	0	1
Total	51	5	46	18	33	14	37	11	40
Percentage		90%	10%	35%	65%	27%	74%	22%	78%



Pictures of Latrines at the Tacloban Astrodome which houses 472 families and 2126 individuals. Water bladders to supply drinking water and water for general use are also provided by WASH Cluster members to answer the needs of the families in this evacuation center.



Health

For the health side, only 16 sites or 31 % said that the DOH had conducted SPEED at the site and only 18 sites or 35 % said that health services were available at their location.

Municipality/City	No. of Sites	HEALTH			
		DOH SPEED		Health Services	
		Yes	No	Yes	No
Iloilo	4	0	4	2	2
Cebu City	1	1	0	1	0
Eastern Samar	15	8	7	7	8
Leyte	30	7	23	8	22
Western Samar	1	0	1	0	1
Total	51	16	35	18	33
Percentage		31 %	69 %	35 %	65 %



Health Services and other needs in the evacuation centers are starting to increase as more and more camps are getting organized and camp committees formed to assist government and cluster members provide these services. (Photo credit: Iya Tabo)



Education

For education, the majority said that the children are going to school, with 49 sites or 96 % with that response. Only 15 sites of 29 % however said that informal education sessions were being conducted at their site.

Municipality/City	No. of Sites	Education			
		Children Going To School		Informal Education	
		Yes	No	Yes	No
Iloilo	4	4	0	1	3
Cebu City	1	1	0	1	0
Eastern Samar	15	15	0	2	13
Leyte	30	28	2	10	20
Western Samar	1	1	0	1	0
Total	51	49	2	15	36
Percentage		96 %	4 %	29 %	71 %

Regarding protection concerns, only 8 sites or 16 % had child friendly spaces, while 22 sites or 43 % said they had 24 hour protection services provided. There were 23 sites or 45 % who said protection issues were reported.

Municipality/City	No. of Sites	Protection					
		Child Friendly Space		24 Hour Protection Services		Protection Issues Reported	
		Yes	No	Yes	No	Yes	No
Iloilo	4	1	3	2	2	2	2
Cebu City	1	0	1	1	0	1	0
Eastern Samar	15	2	13	5	10	5	10
Leyte	30	5	25	14	16	14	16
Western Samar	1	0	1	0	1	1	0
Total	51	8	43	22	29	23	28
Percentage		16 %	84%	43 %	57%	45 %	55%



The construction of Family Privacy Partitions in evacuation centers, answer the need to provide space for individual families. And also provide protection to vulnerable members of the family.

The matrix of all camps in the next section which puts X marks for the absence of key services and check marks (✓) for the solutions and services provided will guide all partners on the needs to be considered on a weekly basis.

Section II: DTM Results by Island Where the Hubs are Located

Summary: Introduction to Individual Provincial Results

This issue looks into about 20 indicators from across the different sectors to give a general overview on the situation of the displacement sites per province. The more detailed information on each site will be found on the Site Profiles that will be posted in the CCCM Philippines Website.

The format of a table with check marks for the presence of the indicators and X marks for the absence of the indicators is intended also to be a monitoring tool for the CCCM Cluster members.

1. Sites and Population

Site Types by Province or City with Number of Families and Number of Individuals by Site Type

Location/ Type of Site	Evacuation Centers (EC)			Tent City (TC)			Spontaneous Settlements (SS)			Transitional Site (TS)		
	#	Fams	Indivs	#	Fams	Indivs	#	Fams	Indivs	#	Fams	Indivs
Province												
Iloilo	1	54	224	2	167	684	1	15	88	0	0	0
Cebu City	0	0	0	1	54	214	0	0	0	0	0	0
Western Samar	0	0	0	0	0	0	0	0	0	1	13	91
Eastern Samar	1	169	815	1	133	615	0	0	0	13	346	1597
Leyte	16	1771	7552	10	833	3428	3	56	203	1	48	239

Iloilo and Cebu

There are a total of 236 families with 996 persons in the four displacement sites in the Province of Iloilo which are found in four municipalities. This population is expected to increase when the two bunkhouse sites will open. They are found in the municipalities of Estancia and Concepcion.

There is only one displacement site in Cebu City, a recognized Tent City with 54 families.

Samar Island

There are a total of 648 families with 3,922 persons in the fifteen displacement sites in the Province of Eastern which are found in four municipalities. This population is expected to increase when the bunkhouse sites will open in the province. They are found in the municipalities of Lawaan, Balangiga and Maydolong.

There is only one displacement site in Western Samar with one bunkhouse site that has 13 families and 91 individuals but another bunkhouse site in Marabut municipality will soon open.

Leyte Island

There are a total of 2,708 families with 11,422 persons in the 30 displacement sites in the Province of Leyte and they are found in Tacloban City and the municipalities of Palo and Tanauan. This population is expected to increase when the bunkhouse sites will open in the province in Ormoc City, Tacloban City and the Municipality of Palo.

Masterlist of the 51 Sites

Municipality/City	Barangay	Site Name	Site Type	Families	Individuals
Iloilo Province					
Pontevedra	Ilawod	1. R. Davidas Civic Center EC	Evacuation Center	54	224
Batad	Tanao	2. Tabunan SS	Spontaneous settlement	15	88
Concepcion	Poblacion	3. Central School TC	Tent City	14	64
Estancia	Botongon	4. NIPSC TC	Tent City	153	620
Cebu City	Inayawan	5. Cebu Tent City TC	Tent City	54	214
Eastern Samar					
Balangkayan	Brgy 01	6. Brgy. 01 BH	Transitional Site	19	119
Borongan City	Sabang	7. Suribao BH	Transitional Site	24	100
Borongan City	Sabang	8. Sitio Nabyawan BH	Transitional Site	22	93
Giporlos	Parena	9. Brgy. Parena BH	Transitional Site	48	225
Guiuan	Cagdara-o	10. Brgy. Cagdara-o BH	Transitional Site	24	108
Guiuan	Campoyong	11. Brgy. Campoyong BH	Transitional Site	47	236
Guiuan	Lupok	12. Brgy. Lupok BH	Transitional Site	24	124
Guiuan	Salug	13. Salug Tent City (ESSU) TC	Tent City	133	615
Guiuan	Brgy 08	14. Naputo Building EC	Evacuation Center	169	815
Hernani	Brgy 03	15. Brgy 03 BH	Transitional Site	23	123
Hernani	Carmen	16. Carmen Proper BH	Transitional Site	24	106
Hernani	Carmen	17. Lubang, Carmen BH	Transitional Site	24	108
Mercedes	Busay	18. Brgy. Busay BH	Transitional Site	23	99
Quinapondan	Naga	19. Brgy. Naga BH	Transitional Site	23	78
Salcedo	Jagnaya	20. Brgy Jagnaya BH	Transitional Site	21	78
Western Samar					
Basey	Bangon	21 .San Vicente BH	Transitional Site	13	91
Leyte					
Palo	Baras	22. Gov't Center BH	Transitional Site	48	239
Palo	Salvacion	23. Salvacion Elem School EC	Evacuation Center	13	35
Tacloban City	Brgy 25	24. Rizal Central School EC	Evacuation Center	331	1,413
Tacloban City	Brgy 32	25. Martinez Building SS	Spontaneous Settlement	31	127
Tacloban City	Brgy 35	26. Avon Building EC	Evacuation Center	10	34
Tacloban City	Brgy 49	27. Leyte National HS EC	Evacuation Center	72	312
Tacloban City	Brgy 54	28. San Fernando CS EC	Evacuation Center	341	1,398
Tacloban City	Brgy 64	29. Sagkahan National HS EC	Evacuation Center	24	120
Tacloban City	Brgy 68	30. Anibong Elem School EC	Evacuation Center	31	58
Tacloban City	Brgy 81	31. ES Park Inn EC SS	Spontaneous Settlement	9	30
Tacloban City	Brgy 87	32. Iglesia ni Cristo EC	Evacuation Center	48	228
Tacloban City	Brgy 87	33. San Jose Central School EC	Evacuation Center	23	115
Tacloban City	Brgy 88	34. Baloc 1 TC	Tent City	134	535
Tacloban City	Brgy 88	35. Baloc 2 Baluarte TC	Tent City	26	89
Tacloban City	Brgy 88	36. San Jose Alimasag TC	Tent City	50	201
Tacloban City	Brgy 88	37. Costa Brava EC	Tent City	116	482
Tacloban City	Brgy 88	38. Fisherman Timex TC	Tent City	82	371
Tacloban City	Brgy 88	39. Mahusay Beach TC	Tent City	107	464
Tacloban City	Brgy 88	40. Old Terminal TC	Tent City	98	174
Tacloban City	Brgy 88	41. Sandy Beach TC	Tent City	37	180
Tacloban City	Brgy 1 & 4	42. Streetlight Bldg EC	Evacuation Center	68	244
Tacloban City	Brgy 23	43. Kapangian CS EC	Evacuation Center	93	417
Tacloban City	Brgy 43	44. EVS Univ EC	Evacuation Center	6	33
Tacloban City	Brgy 54	45. Antivo Property SS	Spontaneous Settlement	16	46
Tacloban City	Brgy 61	46. Tacloban Astrodome EC	Evacuation Center	472	2,126
Tacloban City	Brgy 83	47. Brgy.83-A Health Center EC	Evacuation Center	87	358
Tacloban City	Brgy 25	48. People's Center EC	Evacuation Center	108	445
Tanauan	Canramos	49. Tanauan Central School TC	Tent City	48	233
Tanauan	Canramos	50. Tanauan National HS TC	Tent City	135	699
Tanauan	San Roque	51. Assumption Basketball Crt EC	Evacuation Center	44	216
TOTAL				3,659	15,750

CCCM and Shelter	CCCM					
	Province Site Name	Site Managed	Site w/ IDP Committee	IDPs with DSWD Cards		
				All	Some	None
Iloilo						
	1.R. Davidas Civic Center EC	X	X			✓
	2.Tabunan SS	X	X	✓		
	3.Central School TC	X	X	✓		
	4.NIPSC TC	X	✓			✓
Cebu City						
	1.Cebu Tent City TC	✓	✓			✓
Eastern Samar						
	1.Brgy. 01 BH	X	X	✓		
	2.Suribao BH	✓	✓	✓		
	3.Sitio Nabyawan BH	✓	✓	✓		
	4.Brgy. Parena BH	✓	✓			✓
	5.Brgy. Cagdara-o BH	✓	✓	✓		
	6.Brgy. Campoyong BH	✓	✓	✓		
	7.Brgy. Lupok BH	✓	✓			✓
	8.Salug Tent City (ESSU) TC	✓	✓	✓		
	9.Naputo Building EC	✓	X			✓
	10.Brgy 03 BH	✓	X			✓
	11.Carmen Proper BH	✓	✓			✓
	12.Lubang, Carmen BH	✓	✓			✓
	13.Brgy. Busay BH	✓	✓			✓
	14.Brgy. Naga BH	✓	✓			✓
	15.Brgy Jagnaya BH	✓	X			✓
Western Samar						
	1.San Vicente BH	X	X			✓
Leyte						
	1.Gov't Center BH	X	X			✓
	2.Salvacion Elem School EC	X	X	✓		
	3.Rizal Central School EC	✓	X			✓
	4.Martinez Building SS	✓	X			✓
	5.Avon Building EC	✓	X	✓		
	6.Leyte National HS EC	✓	X		✓	
	7.San Fernando CS EC	✓	X		✓	
	8.Sagkahan National HS EC	✓	X		✓	
	9.Anibong Elem School EC	✓	✓		✓	
	10.ES Park Inn EC SS	✓	X	✓		
	21.Iglesia ni Cristo EC	✓	✓		✓	
	32.San Jose Central School EC	✓	X			✓
	33.Baloc 1 TC	✓	X		✓	
	14.Baloc 2 Baluarte TC	✓	✓			✓
	15.San Jose Alimasag TC	✓	✓	✓		
	16.Costa Brava EC	✓	X	✓		
	17.Fisherman Timex TC	✓	X	✓		
	18.Mahusay Beach TC	✓	X	✓		
	19.Old Terminal TC	✓	X			✓
	20.Sandy Beach TC	✓	✓	✓		
	21.Streetlight Bldg EC	✓	✓	✓		
	22.Kapangian CS EC	✓	X			✓
	23.EVS Univ EC	✓	✓	✓		
	24.Antivo Property SS	✓	✓	✓		
	25.Tacloban Astrodome EC	✓	X	✓		
	26.Brgy.83-A Health Center EC	✓	✓	✓		
	27.People's Center EC	✓	✓		✓	
	28.Tanauan Central School TC	X	✓			✓
	29.Tanauan National HS TC	✓	X			✓
	30.Assumption Basketball Crt EC	✓	✓			✓

CCCM

Iloilo and Cebu

In terms of camp management, the four sites in Iloilo do not have camp managers and only one has a camp management committee while the site in Cebu City has both a camp manager and camp management committees.

Two sites in Iloilo said all were registered with DSWD while two sites said none were registered. The Cebu site also said that none were registered with DSWD.

Samar Island

In terms of camp management, only one site in Eastern Samar and the lone site in Western Samar do not have camp managers. Only 3 sites out of 15 do not have camp management committees in Eastern Samar while the site in Western Samar also does not have a camp management committees.

Out of 15 sites in Eastern Samar, 6 sites said all were registered with DSWD while 9 sites said none were registered. The Western Samar site also said that none were registered with DSWD.

Leyte Island

In terms of camp management, 27 out of 30 sites have camp managers but only 12 sites out of 30 have camp management committees.

Out of 30 sites in Leyte, 13 sites said all were registered with DSWD, 7 sites said some were registered while 10 sites said none were registered.

KEY FACTS: Transitional Sites

- There are only 15 transitional sites that are open in this round of the DTM and they occupy about 20 bunkhouse buildings.
- There are another 200 buildings that will be completed by the end of January 2014 and they will be available for the IDP to use.

The locations are as follows:

Tacloban City – 51 Buildings
Palo – 37 Buildings
Ormoc City – 42 Buildings

Western Samar – 32 Buildings
Easter Samar – 60 Buildings
Iloilo – 20 Buildings

- Tacloban City has 51 bunkhouses found in 3 locations and Eastern Samar has 60 bunkhouses found in over 30 locations.

Site Name	SHELTER			WASH			
	Safe Cooking Area	On Site Electricity	Not vulnerable to Natural Hazards	Complaints in Drinking H2O	On-Site Source of Water	With Solid Waste Problem	With Drainage Problem
Iloilo							
1.R. Davidas Civic Center EC	✓	✓	✓	X	X	X	X
2.Tabunan SS	X	X	X	X	X	✓	X
3.Central School TC	X	X	✓	X	✓	X	X
4.NIPSC TC	✓	✓	✓	X	X	X	X
Cebu City							
1.Cebu Tent City TC	✓	X	X	X	✓	X	✓
Eastern Samar							
1.Brgy. 01 BH	✓	X	X	✓	X	X	X
2.Suribao BH	✓	✓	X	X	X	X	X
3.Sitio Nabyawan BH	✓	X	X	X	X	X	X
4.Brgy. Parena BH	✓	X	X	X	X	✓	X
5.Brgy. Cagdara-o BH	✓	✓	✓	X	X	X	X
6.Brgy. Campoyong BH	✓	✓	✓	X	X	X	X
7.Brgy. Lupok BH	✓	✓	✓	X	X	X	X
8.Salug Tent City (ESSU) TC	X	✓	X	X	✓	X	X
9.Naputo Building EC	X	X	✓	X	X	X	X
10.Brgy 03 BH	X	X	X	X	X	X	X
11.Carmen Proper BH	✓	X	X	X	X	X	X
12.Lubang, Carmen BH	✓	X	X	X	X	✓	X
13.Brgy. Busay BH	✓	X	X	X	X	X	X
14.Brgy. Naga BH	✓	X	✓	X	X	X	X
15.Brgy Jagnaya BH	✓	X	X	X	X	X	X
Western Samar							
1.San Vicente BH	X	X	✓	X	✓	X	X
Leyte							
1.Gov't Center BH	✓	X	✓	X	X	X	✓
2.Salvacion Elem School EC	X	X	X	X	✓	X	✓
3.Rizal Central School EC	X	X	✓	✓	✓	X	X
4.Martinez Building SS	X	X	X	X	X	X	X
5.Avon Building EC	X	✓	✓	X	X	X	X
6.Leyte National HS EC	X	X	X	✓	✓	X	✓
7.San Fernando CS EC	X	✓	X	✓	X	✓	X
8.Sagkahan National HS EC	X	X	✓	X	✓	✓	X
9.Anibong Elem School EC	X	X	X	X	X	X	✓
10.ES Park Inn EC SS	X	X	✓	X	✓	X	X
21.Iglesia ni Cristo EC	X	X	✓	X	✓	X	X
32.San Jose Central School EC	X	X	X	X	✓	X	X
33.Baloc 1 TC	X	X	✓	X	X	✓	X
14.Baloc 2 Baluarte TC	X	X	X	X	X	✓	X
15.San Jose Alimasag TC	X	X	X	X	X	X	✓
16.Costa Brava EC	X	X	X	X	X	✓	X
17.Fisherman Timex TC	X	X	X	X	X	X	X
18.Mahusay Beach TC	X	X	X	X	X	✓	✓
19.Old Terminal TC	X	X	✓	X	X	X	X
20.Sandy Beach TC	X	X	X	X	✓	✓	X
21.Streetlight Bldg EC	X	X	X	X	✓	X	✓
22.Kapangian CS EC	X	X	✓	X	✓	X	X
23.EVS Univ EC	X	X	✓	X	✓	✓	✓
24.Antivo Property SS	X	X	✓	X	✓	X	✓
25.Tacloban Astrodome EC	X	X	X	X	✓	✓	X
26.Brgy.83-A Health Center EC	X	X	X	✓	X	X	X
27.People's Center EC	X	X	✓	X	X	✓	✓
28.Tanauan Central School TC	X	X	✓	X	X	✓	X
29.Tanauan National HS TC	X	X	X	X	✓	X	X
30.Assumption Basketball Crt	X	X	✓	X	X	X	X

Shelter and WASH

Iloilo and Cebu

In Iloilo two sites had no safe cooking area while the other two had safe cooking areas; two sites had On-Site electricity while the other two had no On-Site electricity. The Cebu Tent City had a safe cooking area but had no On-Site electricity.

Three sites out of four in Iloilo said it was safe from hazards while the Cebu site said it was not safe from hazards.

Regarding complaints about the quality of drinking water, none of the five sites has any complaints but only two of the five had On-Site sources of water. Only one out of the five sites said it had a solid waste problem and only one said it had a problem with drainage.

Samar Island

In Eastern Samar 13 sites out of 15 had safe cooking areas while the other three had no safe cooking areas, 5 sites had On-Site electricity while the other 10 had no On-Site electricity. The Western Samar site had no safe cooking area and no On-Site electricity. Only 5 sites out of 15 sites in Eastern Samar said it was safe from hazards while the Western Samar site said it was safe from hazards.

Regarding complaints about the quality of drinking water, only one site in Eastern Samar has any complaints and only one of the 15 sites had On-Site sources of water.

The Western Samar Site had no complaints about the quality of drinking water and had an On-Site source of water.

Only 2 out of the total 16 sites said it had a solid waste problem and none said it had a problem with drainage.

Leyte Island

In Leyte only one site out of 30 had a safe cooking area and only 2 sites had On-Site electricity.

Only 14 sites out of 30 sites in Leyte said it was safe from hazards.

Regarding complaints about the quality of drinking water, only of the 4 sites out of 30 had any complaints but only 14 sites had On-site sources of water.

There are 11 out of the total 30 sites that said it had a solid waste problem and 10 said it had a problem with drainage.

KEY FACTS: Tacloban City

- Tacloban City has 25 displacement sites which is 49% of all displacement sites.
- Tacloban City has 66 % of all families in displacement sites.
- Tacloban City has 14 Evacuation Centers, 8 Tent Cities and 3 Spontaneous Settlements.
- Tacloban City has Camp Managers in all 25 displacement sites but 15 sites do not have IDP Camp Management Committees.
- Tacloban City does not have displacement sites that have safe cooking areas and there are only two sites that have on-site electricity

Site Name	HEALTH		EDUCATION		PROTECTION		
	DOH SPEED	Health Services	Children Going To School	Informal Education	Child Friendly Space	24 Hour Protection	Protection Issues Reported
Iloilo							
1.R. Davidas Civic Center EC	X	X	✓	X	X	X	X
2.Tabunan SS	X	X	✓	X	X	X	X
3.Central School TC	X	✓	✓	X	X	✓	✓
4.NIPSC TC	X	✓	✓	✓	✓	✓	✓
Cebu City							
1.Cebu Tent City TC	✓	✓	✓	✓	X	✓	✓
Eastern Samar							
1.Brgy. 01 BH	✓	X	✓	X	X	X	X
2.Suribao BH	✓	X	✓	X	X	X	X
3.Sitio Nabyawan BH	✓	X	✓	X	X	X	X
4.Brgy. Parena BH	X	X	✓	X	X	✓	✓
5.Brgy. Cagdara-o BH	✓	✓	✓	X	X	✓	✓
6.Brgy. Campoyong BH	✓	X	✓	X	X	X	X
7.Brgy. Lupok BH	✓	✓	✓	✓	X	X	✓
8.Salug Tent City (ESSU) TC	✓	X	✓	X	✓	✓	X
9.Naputo Building EC	✓	✓	✓	X	X	✓	✓
10.Brgy 03 BH	X	✓	✓	X	X	✓	X
11.Carmen Proper BH	X	X	✓	X	X	X	✓
12.Lubang, Carmen BH	X	X	✓	X	X	X	X
13.Brgy. Busay BH	X	✓	✓	X	X	X	X
14.Brgy. Naga BH	X	✓	✓	✓	X	X	X
15.Brgy Jagnaya BH	X	✓	✓	X	✓	X	X
Western Samar							
1.San Vicente BH	X	X	✓	X	X	X	X
Leyte							
1.Gov't Center BH	X	X	✓	X	X	✓	✓
2.Salvacion Elem School EC	X	X	✓	X	X	X	X
3.Rizal Central School EC	X	X	✓	X	✓	✓	✓
4.Martinez Building SS	X	X	✓	X	X	X	X
5.Avon Building EC	X	X	✓	X	X	✓	✓
6.Leyte National HS EC	X	X	✓	X	X	✓	X
7.San Fernando CS EC	✓	✓	✓	✓	✓	✓	X
8.Sagkahan National HS EC	X	X	✓	X	X	X	X
9.Anibong Elem School EC	X	X	✓	X	X	✓	X
10.ES Park Inn EC SS	X	X	✓	X	X	X	X
21.Iglesia ni Cristo EC	✓	X	✓	✓	X	✓	✓
32.San Jose Central School EC	✓	X	✓	X	✓	✓	X
33.Baloc 1 TC	X	✓	✓	X	X	X	✓
14.Baloc 2 Baluarte TC	✓	X	✓	X	X	X	✓
15.San Jose Alimasag TC	X	X	✓	X	X	X	✓
16.Costa Brava EC	X	X	✓	✓	X	X	✓
17.Fisherman Timex TC	X	X	✓	X	X	✓	X
18.Mahusay Beach TC	X	X	X	✓	X	X	X
19.Old Terminal TC	X	X	✓	X	X	✓	✓
20.Sandy Beach TC	X	X	X	✓	X	X	X
21.Streetlight Bldg EC	X	✓	✓	X	X	X	✓
22.Kapangian CS EC	X	X	✓	✓	✓	✓	X
23.EVS Univ EC	✓	✓	✓	X	X	✓	✓
24.Antivo Property SS	X	✓	✓	✓	X	X	✓
25.Tacloban Astrodome EC	X	X	✓	X	✓	✓	X
26.Brgy.83-A Health Center EC	✓	X	✓	X	X	X	X
27.People's Center EC	X	✓	✓	✓	X	X	✓
28.Tanauan Central School TC	✓	X	✓	✓	X	X	X
29.Tanauan National HS TC	X	✓	✓	✓	X	✓	X
30.Assumption Basketball Crt EC	X	✓	✓	X	X	X	✓

Health, Education and Protection

Iloilo and Cebu

In terms of SPEED monitoring by DOH, this was done only in the Cebu site while the four sites in Iloilo state that this was not done for them. Two sites in Iloilo however say there are health services at the site while the Cebu site also say they have health services on site.

All the five sites say that the children are going to school but only two out of the five say informal education activities are being done. Only one site says they have a Child Friendly Space but three out of the five say they have 24 hour Protection at their sites. Three out of the five sites say there are protection issues being reported in their sites.

Samar Island

In terms of SPEED monitoring by DOH, this was done in only 8 sites out of 15 in Eastern Samar was also not done for the Western Samar Site. Seven sites in Eastern Samar say there are health services at the site while the Western Samar site says they do not have health services on site.

All the 16 sites in the two provinces say that the children are going to school but only two out of the 16 say informal education activities are being done. Only two sites say they have a Child Friendly Space but 5 out of the 16 say they have 24 hour Protection at their sites. Five out of the 16 sites say there are protection issues being reported in their sites.

Leyte Island

In terms of SPEED monitoring by DOH, this was done in only 7 sites out of 30 in Leyte Province. Only 8 sites out of 30 say there are health services at the site.

There are 28 sites in Leyte that say that the Children are going to school but only 10 out of the 30 say informal education activities are being done. Only 5 sites out of 30 have Child Friendly Spaces and 14 out of 30 say they have 24 hour Protection at their sites. Fourteen out of the 30 sites say there are protection issues being reported in their sites.

Tapping the DTM to Push the CCCM Cluster Forward

The DTM hopes to become a complete information source and effective monitoring tool for the members of the CCCM Clusters who are in the frontlines and working to serve all the displacement sites.

It wants to support the following key objectives of CCCM which include: providing trained and effective camp managers, conducting vulnerability assessment among IDPs to seek out the most in need of assistance particularly the landless, providing responsive Camp Care and Maintenance, uplifting the outlooks of the IDPS with settlement planning and involving them in search for durable solutions, and aiming to provide them with skills in disaster preparedness.

For additional information, please visit:

<http://cccmphilippines.iom.int/dtm-main>

For queries, please contact:

Camilo G. Gudmalin

Assistant Secretary - Operations and Programs Group, DSWD
Email: cggudmalin@dswd.gov.ph

Rex Arnold R. Alamban

International Organization for Migration (IOM)
Email: ralamban@iom.int

