



IDP homes in the small Yazdah village of the Farah district, Farah © IOM 2017

## ABOUT DTM

The Displacement Tracking Matrix (DTM) is a system that tracks and monitors displacement and population mobility. It is designed to regularly and systematically capture, process and disseminate information to provide a better understanding of the movements and evolving needs of displaced populations, whether on site or en route. For more information about the DTM, please visit [www.displacement.iom.int/afghanistan](http://www.displacement.iom.int/afghanistan).

In Afghanistan, DTM employs the Baseline Mobility Assessment tool, designed to track mobility, determine the population sizes and locations of forcibly displaced people, reasons for displacement, places of origin, displacement locations and times of displacement, including basic demographics, as well as vulnerabilities and priority needs. Data is collected at the settlement level, through key informant interviews, focus group discussions, and direct observations.

This provincial report summarises the DTM findings in Farah. The data has been collected throughout 11 districts and 365 settlements in Farah. This provincial report is supplementary to its nationwide counterpart, please see: Baseline Mobility Assessment Summary Results (November – December 2017).

DTM enables IOM and its partners to deliver evidence-based, better targeted, mobility-sensitive and sustainable humanitarian assistance, reintegration, community stabilization and development programming.

## 5 TARGET POPULATIONS

Through the Baseline Mobility Assessments, DTM tracks the locations, population sizes, and cross-sectoral needs of the five core target population categories:

1. Returnees from Abroad
2. Out-Migrants
  - Internally Displaced Persons (IDPs), subdivided into the following three categories:
3. Arrival IDPs
4. Returnee IDPs
5. Fled IDPs

Data on population sizes for the 5 target population categories is collected by time of displacement, using each of the following time frames: 2012-2015 • 2016 • 2017.

## HIGHLIGHTS



**11** districts assessed

**365** settlements assessed

in Anardara, Bakwa, Balabuluk, Farah, Gulestan, Khak-e-Safed, Lash-e-Juwayn, Purchaman, Pushtrod, Qala-e-Kah and Shibkoh



**2,277**

key informants interviewed



**64,565**

returnees from abroad [2012–2017]



**196,643**

persons have fled their homes as IDPs [2012–2017]



**74,325**

IDPs [2012–2017] currently in host communities



**100,189**

former IDPs [2012–2017] have returned to their homes



**81,501**

out-migrants fled abroad [2012–2017]



**1,812**

out-migrants fled to Europe (2% of out-migrants)



**2,063**

returnees and IDPs live in tents or in the open air (1% of total returnees and IDPs)



**1 in 2**

persons from Khak-e-Safed is an IDP or a returnee



**2 in 5**

persons from Farah have fled their home as an IDP



**1 in 4**

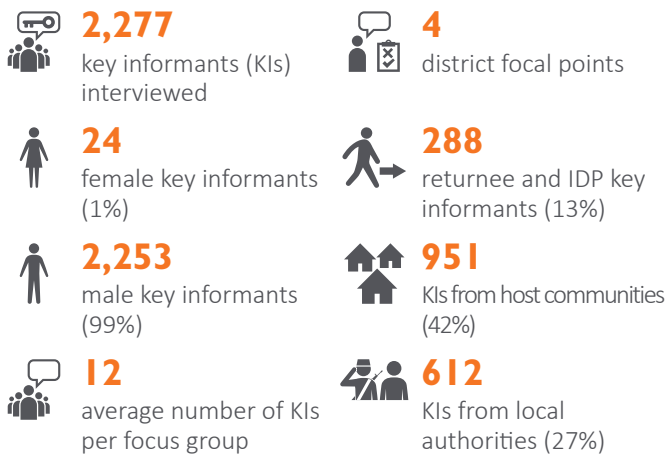
persons from Khak-e-Safed, Lash-e-Juwayn, Qala-e-kah and Shibkoh has fled abroad as an out-migrant



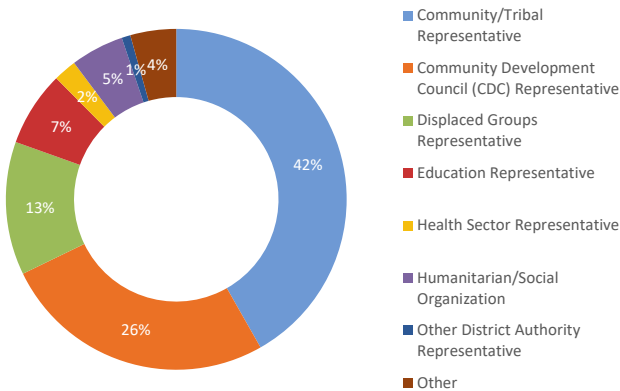
## KEY INFORMANTS

DTM's field enumerators, District Focal Points (DFPs), collect data at the settlement level, predominantly through focus group discussions with key informants. The average size of focus groups is five key informants per group. In the rare case that DTM's District Focal Points cannot physically reach a community, due to insecurity, conflict, or risk of retaliation by anti-government elements, DFPs meet the focus groups at a safe place outside their communities or conduct the assessments by phone.

Significant highlights regarding the overall composition of Key Informant Focus Groups include the following:



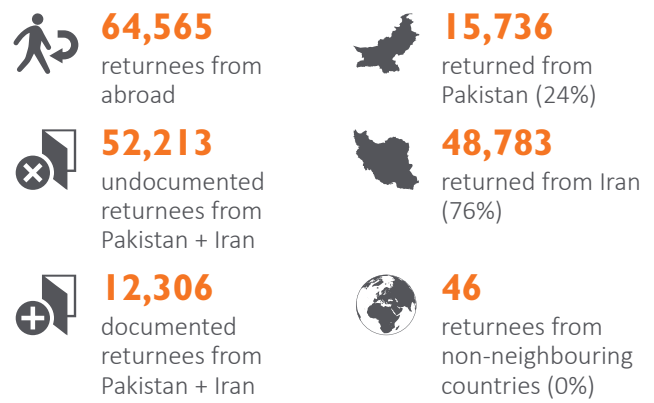
Key Informants by Type | Farah



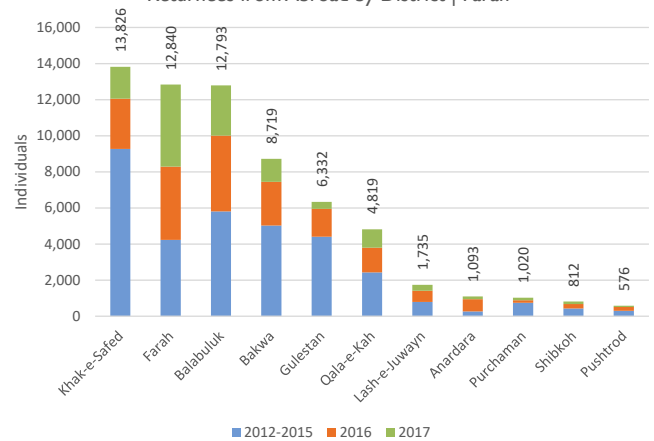
## RETURNEES

Returnees are Afghan nationals who have returned to Afghanistan in the assessed location after having spent at least six months abroad. This group includes both documented returnees (Afghans who were registered refugees in host countries and then requested voluntary return with UNHCR and relevant national authorities) and undocumented returnees (Afghans who did not request voluntary return with UNHCR, but rather returned spontaneously from host countries, irrespective of whether or not they were registered refugees with UNHCR and relevant national authorities).

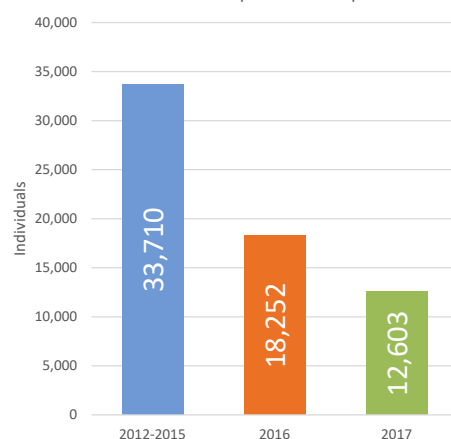
The number of returnees from abroad to Farah has been steadily decreasing. From the period between 2012 and 2015 to the period of 2016 the number of returnees decreased 46%, followed by a 31% decrease in returnees in 2017.



Returnees from Abroad by District | Farah



Returnees from Abroad | Annual Trends | Farah



A small focus group discusses latest displacement patterns in Yazdah village, Farah © IOM 2017

## IDPs

Arrival IDPs (IDPs) are Afghans who have fled from other settlements in Afghanistan and have arrived and presently reside at the assessed location / host community, as a result of, or in order to avoid, the effects of armed conflict, generalized violence, human rights violations, protection concerns, or natural and human-made disasters.

**74,325**  
IDPs

**82%**  
IDPs relocate within their home province

**79%**  
displaced due to conflict

**21%**  
displaced by natural disaster

## OUT-MIGRANTS

Out-Migrants are Afghans who have moved or fled abroad from the assessed location, whatever the cause, reason or duration of expatriation. This category includes refugees, displaced and uprooted people, and economic migrants who have left Afghanistan.

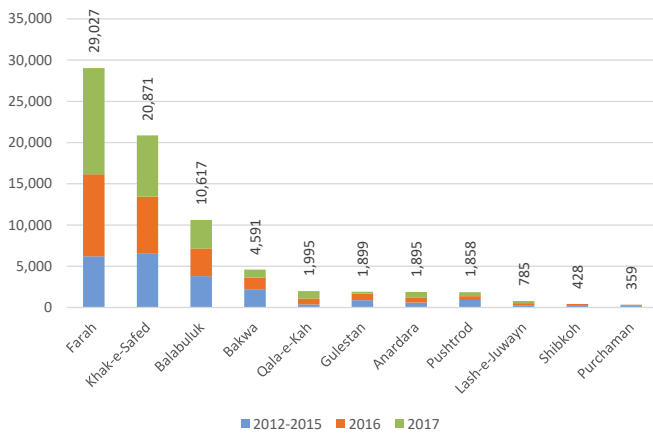
**81,501**  
fled abroad

**1,812**  
fled to Europe (2%)

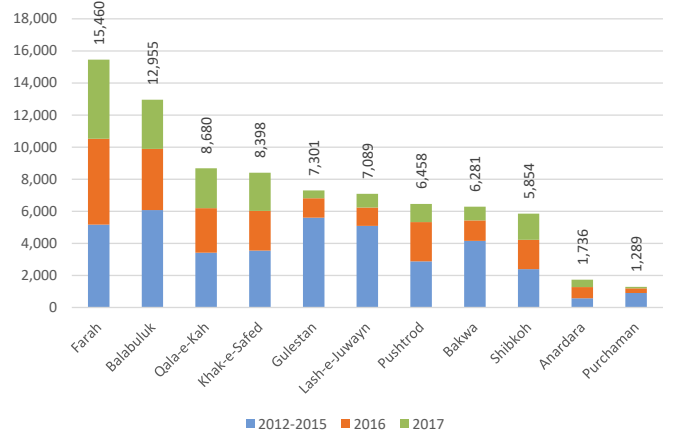
**67,066**  
fled to Iran (82%)

**12,588**  
fled to Pakistan (15%)

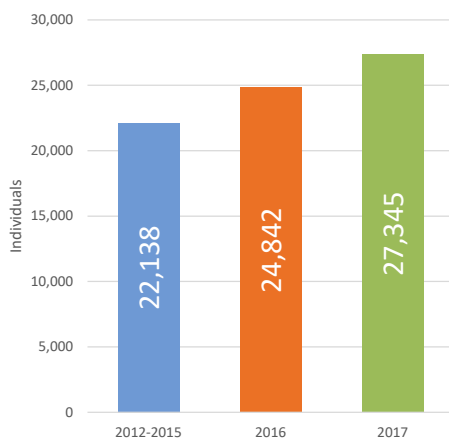
Arrival IDPs by District | Farah



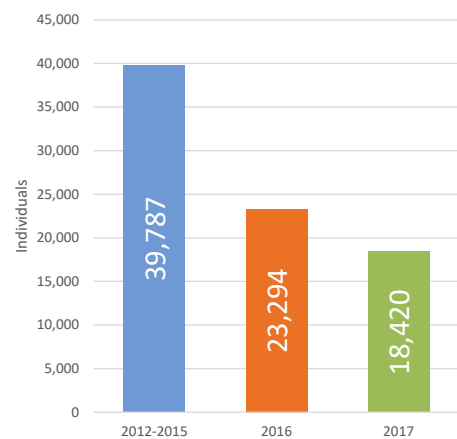
Out-Migrants by District | Farah



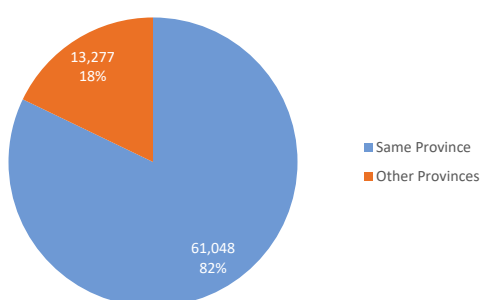
Arrival IDPs | Annual Trends | Farah



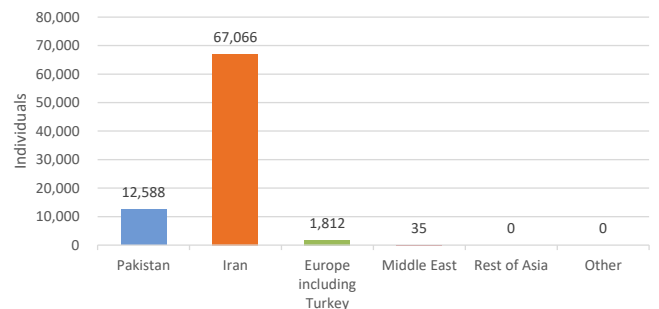
Out-Migrants | Annual Trends | Farah



Arrival IDPs by Province of Origin | Farah



Out-Migrants by Country/Region of Destination | Farah



Displaced Individuals in all 5 Target Populations | Summary Overview by District

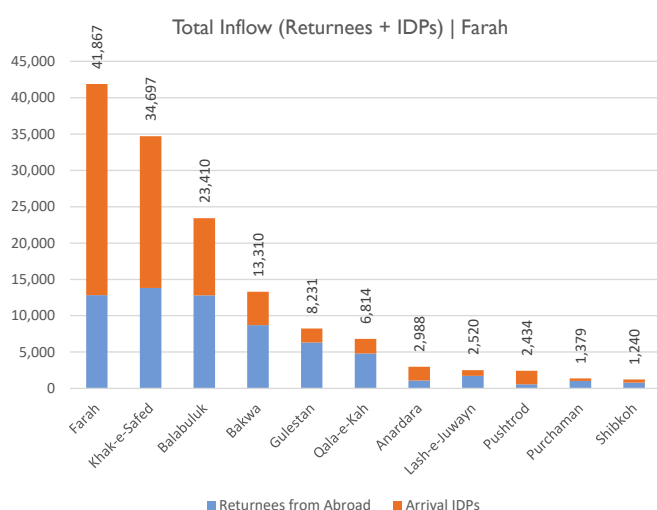
District	*Base Population	Total Inflow (Returnees + Arrival IDPs)	% of Pop.	Returnees	% of Pop.	Returnee IDPs	% of Pop.	Arrival IDPs	% of Pop.	Fled IDPs	% of Pop.	Out Migrants	% of Pop.
Anardara	28,907	2,988	9%	1,093	3%	1,354	5%	1,895	6%	5,961	21%	1,736	6%
Bakwa	36,836	13,310	27%	8,719	17%	8,121	22%	4,591	9%	12,281	33%	6,281	17%
Balabuluk	74,159	23,410	24%	12,793	13%	19,453	26%	10,617	11%	69,830	94%	12,955	17%
Farah	116,639	41,867	26%	12,840	8%	29,501	25%	29,027	18%	27,877	24%	15,460	13%
Gulestan	45,008	8,231	15%	6,332	12%	19,252	43%	1,899	4%	30,219	67%	7,301	16%
Khake-Safed	31,468	34,697	52%	13,826	21%	14,560	46%	20,871	32%	17,136	54%	8,398	27%
Lash-e-Juwayn	29,029	2,520	8%	1,735	5%	1,299	4%	785	2%	4,437	15%	7,089	24%
Purchaman	55,497	1,379	2%	1,020	2%	2,229	4%	359	1%	4,445	8%	1,289	2%
PushTROD	42,202	2,434	5%	576	1%	2,160	5%	1,858	4%	13,139	31%	6,458	15%
Qala-e-Kah	31,956	6,814	18%	4,819	12%	2,140	7%	1,995	5%	6,978	22%	8,680	27%
Shibkoh	24,272	1,240	5%	812	3%	120	0%	428	2%	4,340	18%	5,854	24%
<b>Total</b>	<b>515,973</b>	<b>138,890</b>	<b>21%</b>	<b>64,565</b>	<b>10%</b>	<b>100,189</b>	<b>19%</b>	<b>74,325</b>	<b>11%</b>	<b>196,643</b>	<b>38%</b>	<b>81,501</b>	<b>16%</b>

\* Base Population source: OCHA, CSO Population Estimates for 2016 to 2017, 15-AUG-2016

Symbology: > 20% of base population

Total Inflow (Returnees + IDPs) | Summary by District

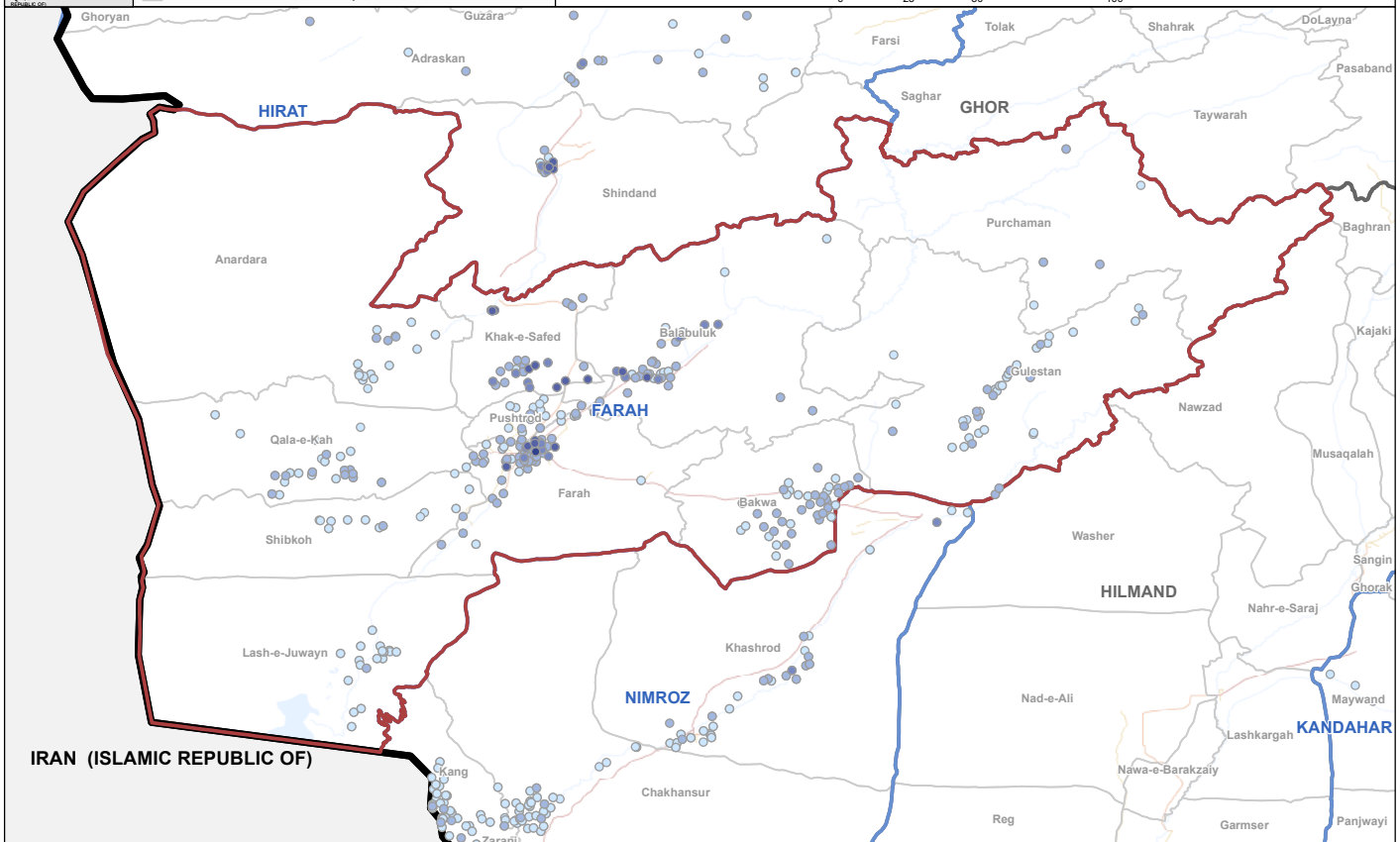
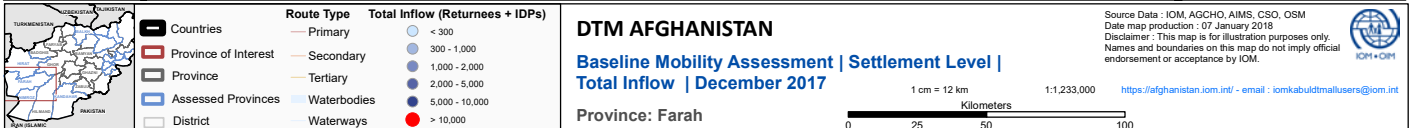
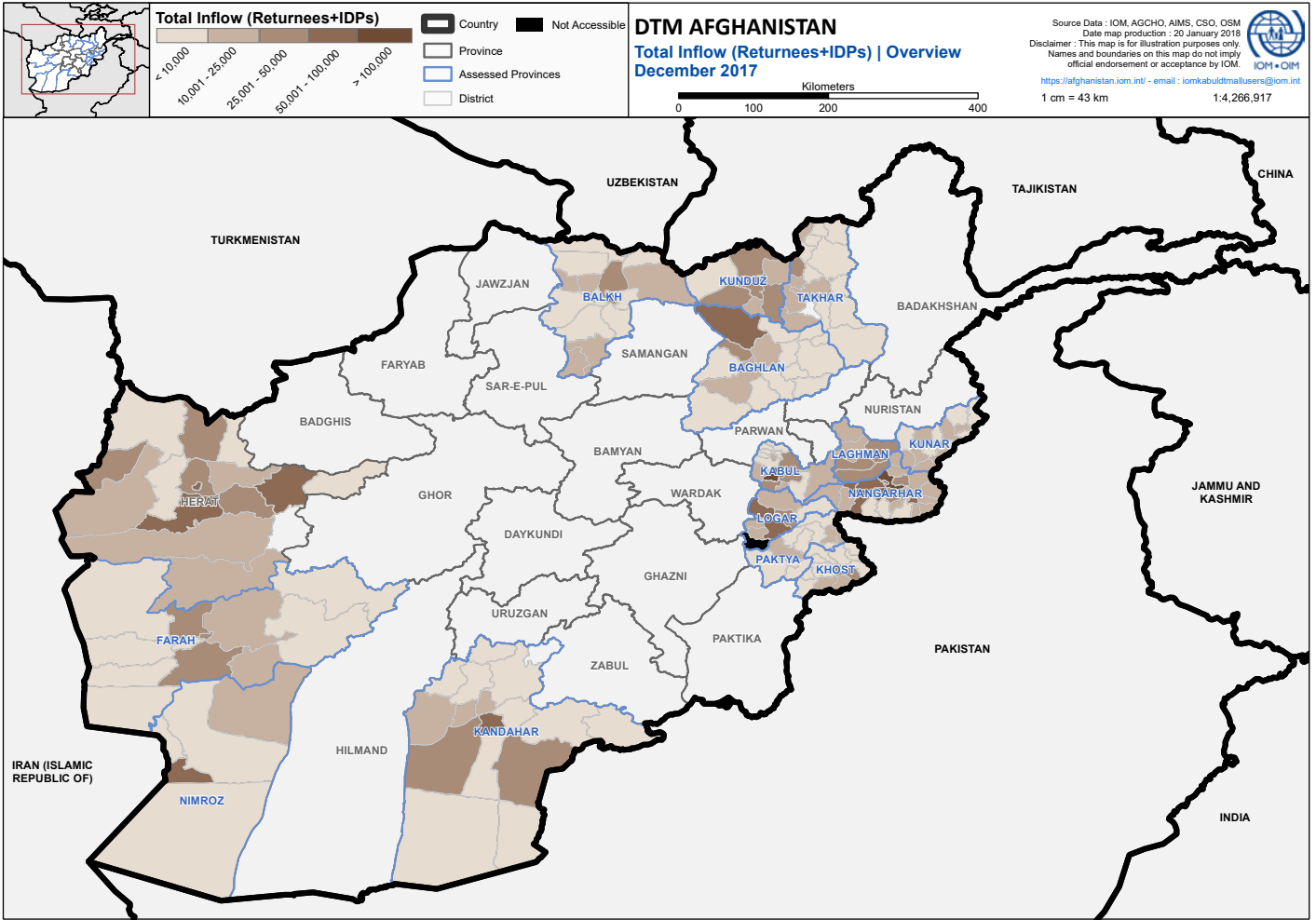
District	Returnees	Arrival IDPs	Total Inflow
Farah	12,840	29,027	41,867
Khak-e-Safed	13,826	20,871	34,697
Balabuluk	12,793	10,617	23,410
Bakwa	8,719	4,591	13,310
Gulestan	6,332	1,899	8,231
Qala-e-Kah	4,819	1,995	6,814
Anardara	1,093	1,895	2,988
Lash-e-Juwayn	1,735	785	2,520
PushTROD	576	1,858	2,434
Purchaman	1,020	359	1,379
Shibkoh	812	428	1,240
<b>Total</b>	<b>64,565</b>	<b>74,325</b>	<b>138,890</b>



As shown in the below table, 20 settlements in Farah together host 47,257 returnees and IDPs. These communities, which make up only 5% of all assessed settlements, are home to 34% of all the IDPs and returnees within the province. This large influx of displaced Afghans concentrated in key areas makes those communities especially fragile and potentially susceptible to social instability, as growing high numbers of people compete for limited, already overstretched resources and job opportunities. Deewar-Surkh in Khak-e-Safed is most affected, hosting 4,575, whilst the most affected district is the Farah district, which hosts almost one third of provincial IDPs and returnees.

Top 20 settlements hosting the most Returnees + IDPs

Settlement	District	Total Inflow
Deewar Surkh	Khak-e-Safed	4,575
Farah	Farah	3,877
Jeeja Bala	Khak-e-Safed	3,625
Qaryeh-ye Rigi	Farah	3,243
Kor Ghonundi	Khak-e-Safed	2,760
Watar Pamp Deewar Surkh	Khak-e-Safed	2,696
Sharaik Mahajerin	Farah	2,450
Esahaq Zai	Farah	2,160
Jijah-i-pa'in	Khak-e-Safed	2,158
Peyyow	Balabuluk	2,105
Dahi Now	Khak-e-Safed	2,066
Dar Abad Sufia	Farah	2,037
Ranij	Khak-e-Safed	2,030
Shekh Lala (shaykh Lala)	Balabuluk	1,926
Gurji Tahsildar	Farah	1,877
Nang Abad	Khak-e-Safed	1,585
Pas Ab	Balabuluk	1,557
Sang Zor Payen	Farah	1,534
Dowlat Abad	Balabuluk	1,510
Payen Kailla	Balabuluk	1,486
<b>Total</b>		<b>47,257</b>



## TOP 5 DISTRICTS

Evidence-based prioritization is essential to the delivery of better targeted assistance and basic services. DTM provides partners with lists of priority areas in most need of assistance, based on a variety of sectoral indicators, at Province, District and Settlement levels.

(NOTE: The number of individuals reported below is based on the Total Inflow: IDPs + Returnees)

### TOP 5 Districts with the most Returnees and IDPs (Returnees + IDPs)

Rank	District	Individuals
1	Farah	41,867
2	Khak-e-Safed	34,697
3	Balabuluk	23,410
4	Bakwa	13,310
5	Gulestan	8,231
<b>Grand Total</b>		<b>121,515</b>

### TOP 5 in need of Shelter (IDPs + Returnees living in Tents or in the Open Air)

Rank	District	Individuals
1	Khak-e-Safed	669
2	Bakwa	550
3	Balabuluk	203
4	Qala-e-Kah	119
5	Farah	49
<b>Grand Total</b>		<b>1,590</b>

### TOP 5 in need of Water (potable water > 3 km away)

Rank	District	Individuals
1	Khak-e-Safed	17,179
2	Balabuluk	9,191
3	Farah	2,132
4	Gulestan	1,329
5	Qala-e-Kah	1,104
<b>Grand Total</b>		<b>30,935</b>

### TOP 5 in need of Clinics (nearest clinic > 5 km away)

Rank	District	Individuals
1	Balabuluk	12,998
2	Farah	9,610
3	Khak-e-Safed	9,338
4	Bakwa	8,235
5	Gulestan	6,747
<b>Grand Total</b>		<b>46,928</b>

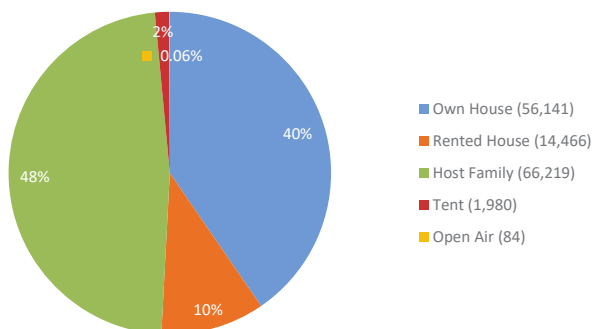
### TOP 5 in need of Schools (nearest school > 3 km away)

Rank	District	Individuals
1	Balabuluk	16,432
2	Khak-e-Safed	15,010
3	Gulestan	5,974
4	Bakwa	4,684
5	Farah	2,589
<b>Grand Total</b>		<b>44,689</b>

### TOP 5 in need of Markets (nearest market > 10 km away)

Rank	District	Individuals
1	Khak-e-Safed	14,802
2	Balabuluk	11,018
3	Farah	10,422
4	Gulestan	3,869
5	Qala-e-Kah	2,089
<b>Grand Total</b>		<b>42,200</b>

Total Inflow (Returnees+IDPs) | Shelter | Farah



## STORIES FROM THE DISPLACED

### SEEKING JOBS - IDPS MOVE WITHIN THEIR HOME PROVINCE

Jamal Mohammad is 57 years old and a father of seven children – four daughters and three sons. Originally, he is from a village in Western Farah that is partly under control of the Taliban. Jamal tells us that he had been unemployed for many years, and as a result, his family had been living in severe poverty.

*Jamal and his family members are among the 74,325 IDPs that are currently situated in Farah.*

In 2016, seeking a new start and opportunities for work, Jamal decided to leave his home village and move further West to a more densely populated district. After a shaky six-month period of seeking employment, where he and his family lived in a tent and survived from handouts from their neighbours, he secured a job in a husbandry farm. His employer (the farm owner) has allowed the family of eight to stay in a spare mud-built room on the farm.

*The primary source of income of the people from the Western regions of Farah is from agriculture and livestock. Due to poor wages in this sector, many young people migrate to Pakistan or Iran to send remittances back home.*

Currently, Jamal tells us that his living conditions are very poor. His family is severely cramped in a small insecure abode. Furthermore, the money that he receives from his work is not sufficient for the needs of his families. Often, they can only afford to eat small pieces of bread with tea for breakfast, lunch, and dinner. Given that Jamal is the only working-age adult in the household, he feels a responsibility to improve the life of his family. But, attempting to provide for such a large family in a region where jobs are scarce, insecure and poorly paid is excruciatingly challenging.



Jamal Mohammad and his family of eight are struggling to reintegrate after having been internally displaced.

DTM in Afghanistan is generously supported by:



## ANNEX I ▪ TOP 200 SETTLEMENTS

RANKED BY TOTAL IN-FLOW [RETURNEES + IDPS]

Rank	District	Settlement	Total In-Flow	Rank	District	Settlement	Total In-Flow
1	Khak-e-Safed	Deewar Surkh	4,575	53	Farah	Shamal Gah Jonobi	630
2	Farah	Farah	3,877	54	Gulestan	Faydz Abad	619
3	Khak-e-Safed	Jeeja Bala	3,625	55	Qala-e-Kah	Juma Ali	618
4	Farah	Qaryeh-ye Rigi	3,243	56	Farah	Qala Baihbod	605
5	Khak-e-Safed	Kor Ghonundi	2,760	57	Balabuluk	Momen Abad	600
6	Khak-e-Safed	Watar Pamp Deewar Surkh	2,696	58	Qala-e-Kah	Hassan Abad	600
7	Farah	Sharaik Mahajerin	2,450	59	Farah	Karje Abdul Rahman	590
8	Farah	Esahaq Zai	2,160	60	Balabuluk	Shakh-e Pa'in-e Kanesk	578
9	Khak-e-Safed	Jijah-i-pa'in	2,158	61	Khak-e-Safed	Jowzara	576
10	Balabuluk	Peyyow	2,105	62	Balabuluk	Boor Abad	566
11	Khak-e-Safed	Dahi Now	2,066	63	Farah	Shor abad barang toot	561
12	Farah	Dar Abad Sufia	2,037	64	Khak-e-Safed	Aftadar	560
13	Khak-e-Safed	Ranij	2,030	65	Bakwa	Band now	546
14	Balabuluk	Shekh Lala (shaykh Lala)	1,926	66	Bakwa	Mogholabad	543
15	Farah	Gurji Tahsildar	1,877	67	Gulestan	Chenagi	541
16	Khak-e-Safed	Nang Abad	1,585	68	Bakwa	Shah Toran	540
17	Balabuluk	Pas Ab	1,557	69	Balabuluk	Ganj Abad	540
18	Farah	Sang Zor Payen	1,534	70	Farah	Hamat Abad	540
19	Balabuluk	Dowllat Abad	1,510	71	Balabuluk	Ali Abad	536
20	Balabuluk	Payen Kailla	1,486	72	Balabuluk	Ameen Abad	535
21	Balabuluk	Warya	1,427	73	Bakwa	Shair Surkh Mohammad Yaqob	525
22	Khak-e-Safed	Jijah-i-pain Shindand	1,261	74	Purchaman	Araghaman	513
23	Balabuluk	Dahzak	1,237	75	Khak-e-Safed	Karaiz Haji Khan Mohammad	511
24	Farah	Zoryaa	1,101	76	Qala-e-Kah	Kushkak	504
25	Khak-e-Safed	Karaiz Dad Shah	1,095	77	Farah	Diag Foroshan	503
26	Farah	Chahar Burjak	1,070	78	Bakwa	Marja	497
27	Balabuluk	Farah Road	1,033	79	Farah	Qala-i-arbab	490
28	Khak-e-Safed	Rabat	1,013	80	Bakwa	Poushta	483
29	Khak-e-Safed	Ghor Che	980	81	Khak-e-Safed	Karaiz Haji Mohammad Sadiq	483
30	Khak-e-Safed	Islam Abad	925	82	Qala-e-Kah	Jowi Chashma	476
31	Khak-e-Safed	Khuushk Abad	911	83	Qala-e-Kah	Mahajer Abad	468
32	Khak-e-Safed	Sarkari Karaiz	910	84	Purchaman	Nar Ghan	466
33	Khak-e-Safed	Karaiz Haji Mohammad Sharif	891	85	Farah	Nangab	465
34	Khak-e-Safed	Karaiz Abdul Rahim	837	86	Shibkoh	Kain	465
35	Balabuluk	Seya Jangal	799	87	Farah	Qala Zaman	460
36	Balabuluk	Qarya haji sayed noorahmad	749	88	Qala-e-Kah	Douzd Bad	452
37	Anardara	Anar Dara	742	89	Bakwa	Gaza Kalan	448
38	Farah	Dar Abad Bala	732	90	Pushtrod	Tapa Shairan	448
39	Farah	Mahajer Abad	730	91	Qala-e-Kah	Hassan Abad Hulya	446
40	Farah	Shamal Gah Shamaly	725	92	Farah	Kokshef	442
41	Farah	Qaryayi Nang Abi Bala	710	93	Bakwa	Hussain Abad	441
42	Khak-e-Safed	Dushat khost	707	94	Farah	Tawjag	441
43	Farah	Shaikh Abad	700	95	Gulestan	Qambaran	440
44	Balabuluk	Harif Abad	698	96	Balabuluk	Suji Janubi	434
45	Khak-e-Safed	Karaiz Borhan Khost	686	97	Balabuluk	Mahajer Abad	429
46	Anardara	Tameer Bala	672	98	Farah	Chahar Bagh	420
47	Qala-e-Kah	Duzd Bor	672	99	Bakwa	Qalandar Abad	413
48	Farah	Kok Hulya	650	100	Bakwa	Ali Baik	413
49	Farah	Mirabad	650	101	Lash-e-Juwayn	Jowi Now	413
50	Farah	Islamabad	646	102	Farah	Nowrozey	405
51	Farah	Abdul Abad	645	103	Farah	Shor Abad	405
52	Balabuluk	Safarak	642	104	Purchaman	Rabat (1)	400

Rank	District	Settlement	Total In-Flow	Rank	District	Settlement	Total In-Flow
105	Bakwa	Shoraka	399	163	Balabuluk	Tapa Sadat	270
106	Gulestan	Khanjak	394	164	Gulestan	Qarya-i-mohammad Abad	268
107	Gulestan	Qala e Kohna	390	165	Farah	Karaiz Jalal	267
108	Gulestan	Oley	387	166	Qala-e-Kah	Samak	266
109	Anardara	Haji Abad	385	167	Qala-e-Kah	Gust	266
110	Bakwa	Ghazi Abad	385	168	Bakwa	Narei	265
111	Gulestan	Ghoziney	385	169	Farah	Bagh Now	262
112	Balabuluk	Shewan mabain	384	170	Balabuluk	To Danak	261
113	Bakwa	Ashkin	380	171	Gulestan	Rabat	260
114	Bakwa	Dahi baloch	378	172	PushTROD	Char Dara	260
115	Bakwa	Kora Gaz	378	173	Bakwa	Soltan-e Bakva	259
116	Farah	Qala e Mohammad	378	174	Bakwa	Diwarak	259
117	Farah	Now bahar	378	175	Farah	Gunji Samizaiha	259
118	Farah	Kadank	375	176	Farah	Khormaleq	259
119	Balabuluk	Khvajaha	374	177	Gulestan	Boghal	254
120	Farah	Haidar Kalay	372	178	Gulestan	Qarya-i-shaywani	253
121	Farah	Barenkot Payen	372	179	Farah	Shakardara	252
122	Bakwa	Haji Reza Gul	371	180	Bakwa	Bolak	251
123	Bakwa	Khoja Hassan	371	181	Balabuluk	Karwan Gah	248
124	Gulestan	Qarya Espand	371	182	Balabuluk	Khowja Khezer	246
125	Bakwa	Jowi Safid	364	183	Bakwa	Damin	245
126	Khak-e-Safed	Kariz Wala Khost	361	184	Farah	Gina Kan	245
127	Gulestan	Anqouz	356	185	Farah	Haskar Abad	243
128	PushTROD	Kundar Balaye	355	186	Gulestan	Taye Shakh	241
129	Qala-e-Kah	Rangen	350	187	Bakwa	Saya sar	240
130	Balabuluk	Chakab	344	188	Lash-e-Juwayn	Samor	238
131	Khak-e-Safed	Karaiz Haji Mohammad Akbar	341	189	Balabuluk	Taqserak	220
132	PushTROD	Deheshk	334	190	Balabuluk	Soje	219
133	Gulestan	Kshata Ghani Murgh	333	191	Lash-e-Juwayn	Markaz Lash Jaween	218
134	Gulestan	Seh Gosha-i-janobi	333	192	Bakwa	Dashtak	217
135	Gulestan	Dahi Yak Sani	330	193	Bakwa	Burj	217
136	Bakwa	Qasim Abad	329	194	Farah	Hakim Abad	214
137	Farah	Poul Bagh Now	329	195	Lash-e-Juwayn	Mahalla-i-mullaha	210
138	Farah	Rowkin	327	196	Shibkoh	Dor Jowi Kalan	210
139	Bakwa	Saghay	322	197	Gulestan	Ghaluri	207
140	Farah	Khair Abad Gulchin	315	198	Farah	Now Abad Sangzor	206
141	Farah	Towsak	315	199	Gulestan	Qal'a-i-surkh	204
142	Qala-e-Kah	Gulistan	315	200	Lash-e-Juwayn	Abdul Wahid	196
143	Bakwa	Sher Bate	314				
144	Bakwa	Kurta	312				
145	Balabuluk	Dizak	311				
146	Farah	Sayed Abad Dig Frosh	305				
147	Bakwa	Doshakhak	301				
148	Farah	Harif Abad	300				
149	Farah	Shamal Gah	295				
150	Gulestan	Maydan Jabha	295				
151	Bakwa	Sheran Tagab	294				
152	Farah	Ghafoor Abad	294				
153	Bakwa	Shora Khana Kalan	292				
154	Farah	Karaiz Akhtar Mohammad	292				
155	Farah	Now Dahi	289				
156	Balabuluk	Kanesk	283				
157	Farah	Raj	280				
158	Farah	Qala-i- Ghulam Sakhi	280				
159	Qala-e-Kah	Dashta-i-gul	280				
160	Bakwa	Qaryeh haji shakhi	273				
161	Farah	Karaizak	273				
162	Farah	Qala Muzek	272				