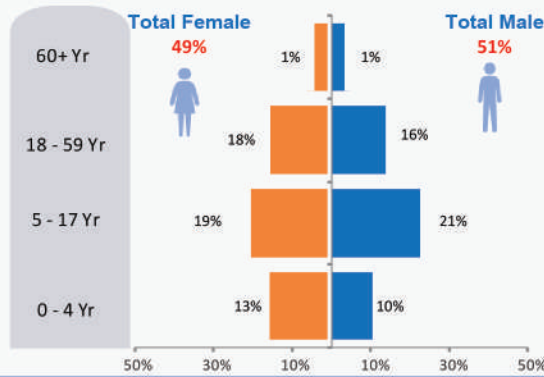


* Overall returnees since January 2017
29,278

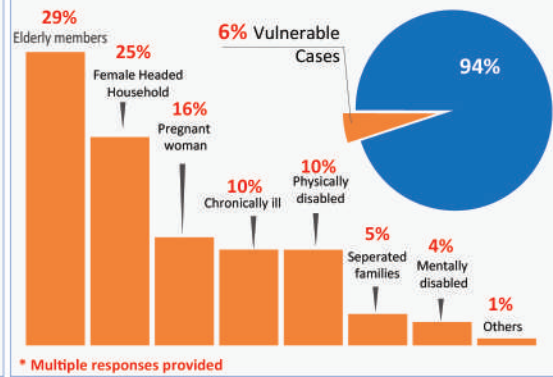


This reporting period **4,633**

Age-Gender Disaggregation (Individuals)



* Vulnerable Cases Reported



* % of Households travelling with assets to Afghanistan



Household Item or Personal Belonging
100%

Families carrying Cash
80%

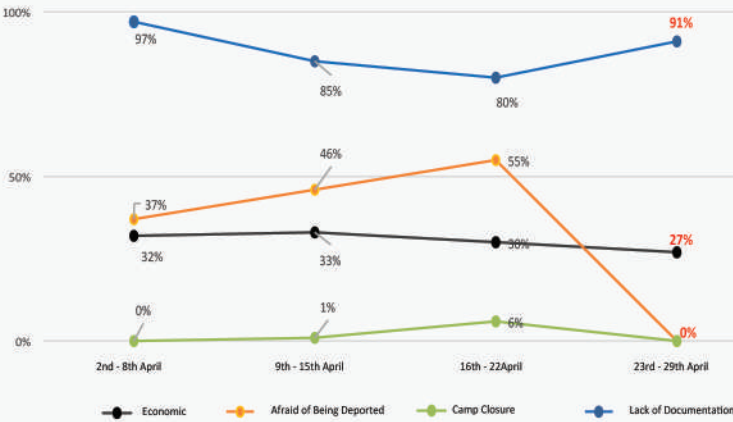
Productive Assets
52%

Livestock
8%

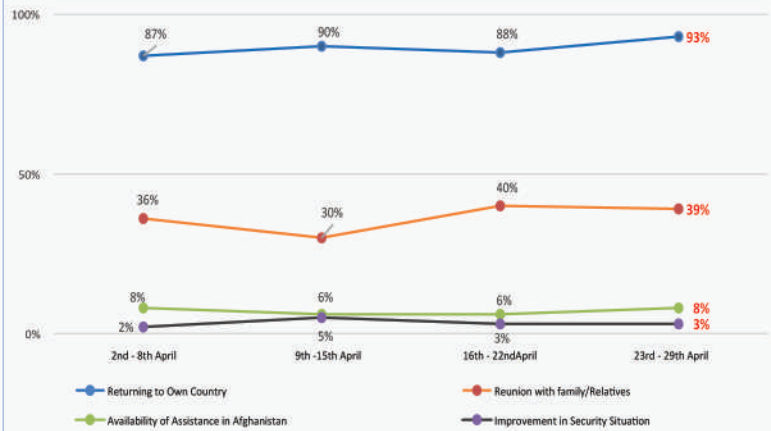
Vehicle
< 1%

* Multiple responses provided

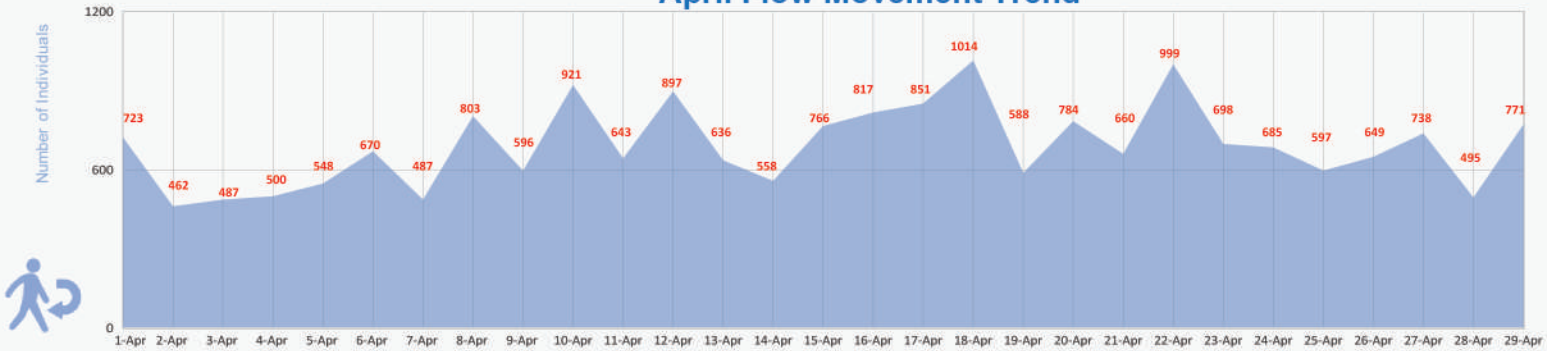
Trend - PUSH Factors



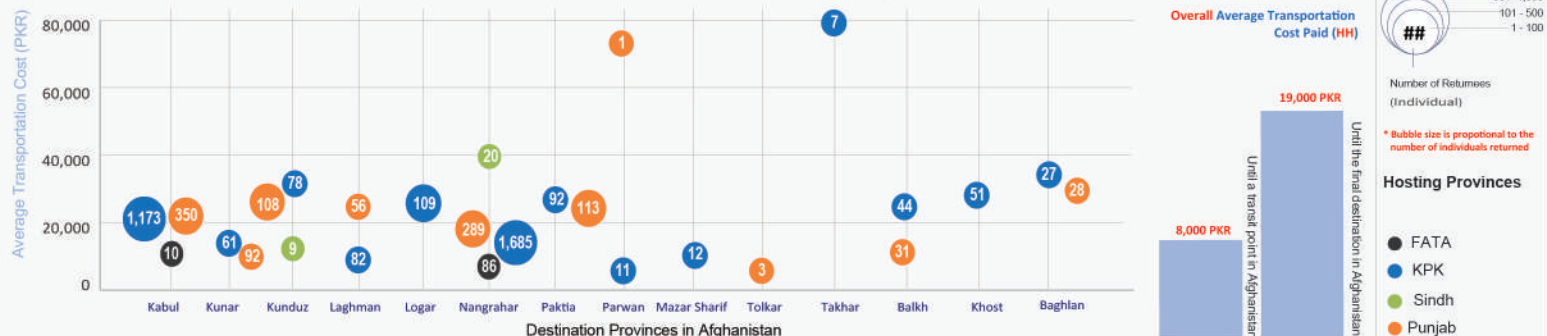
Trend - PULL Factors



April Flow Movement Trend



Movement Trends and Transportation Costs



Overall figure does not include the number of deportees during the reporting period.

For feedback contact: MIRFAN@iom.int

Population Movement (PAKISTAN to AFGHANISTAN) 23rd - 29th April

Legend

Number of individuals returning from Provinces of Pakistan

Province
District
International Boundary

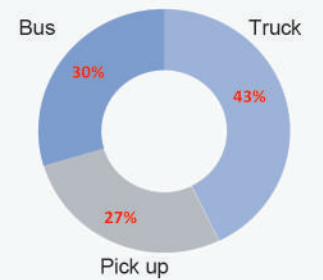
Return Movements (Individuals)

1 - 100
101 - 1,000
1,001 - 3,000

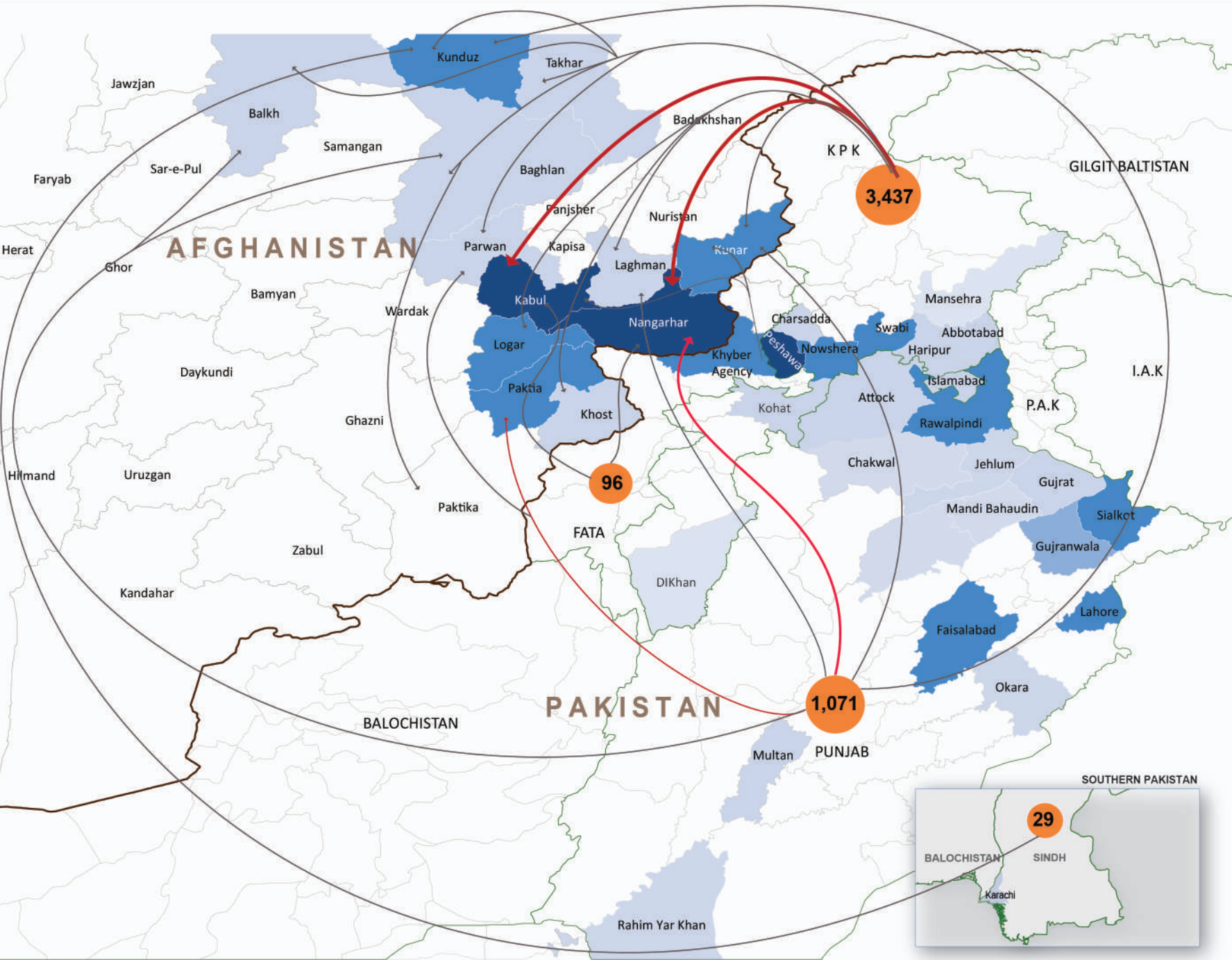
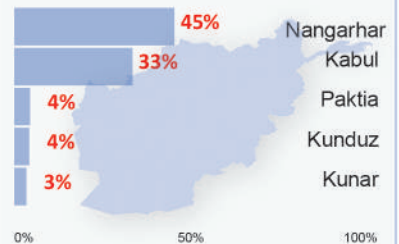
Concentration of Returnees

1 - 100
101- 500
500 - 3,000

% of Transportation Type Used for Return



% of Return in top 5 Provinces



Presently, flow monitoring has only been established at the **Torkham Border**.