

202 IDP HHs

38.6% decrease in displacement from the previous week (329 HHs)

120 Returnee HHs

IOM Yemen DTM's Rapid Displacement Tracking (RDT) tool collects data on estimated numbers of households forced to flee on a daily basis from their locations of origin or displacement, allowing for regular reporting of new displacements\* in terms of estimated numbers, causes of displacement, geography and needs. It also tracks returnees who returned to their location of origin.

During the reporting period, between 13 and 19 February 2022, IOM Yemen DTM tracked 202 households (HHs) (1,212 individuals\*\*) displaced at least once.

Conflict was the main reason for displacement, accounting for 93 per cent (188 HHs) of the total, followed by economic reasons, accounting for seven per cent (14 HHs).

Between 1 January and 19 February 2022, IOM Yemen DTM estimates that a cumulative 3,368 HHs (20,208 individuals) have experienced displacement at least once.

Some 112 HHs displaced in the previous reporting period, which covered 6 to 12 February 2022, in the governorates of Ta'iz (65 HHs), Ma'rib (23 HHs), Aden (14 HHs), Al Hodeidah (5 HHs), and Al Maharah (5 HH) were only identified in the current reporting period. This figure has been added to the cumulative displacement total recorded from the beginning of the year.

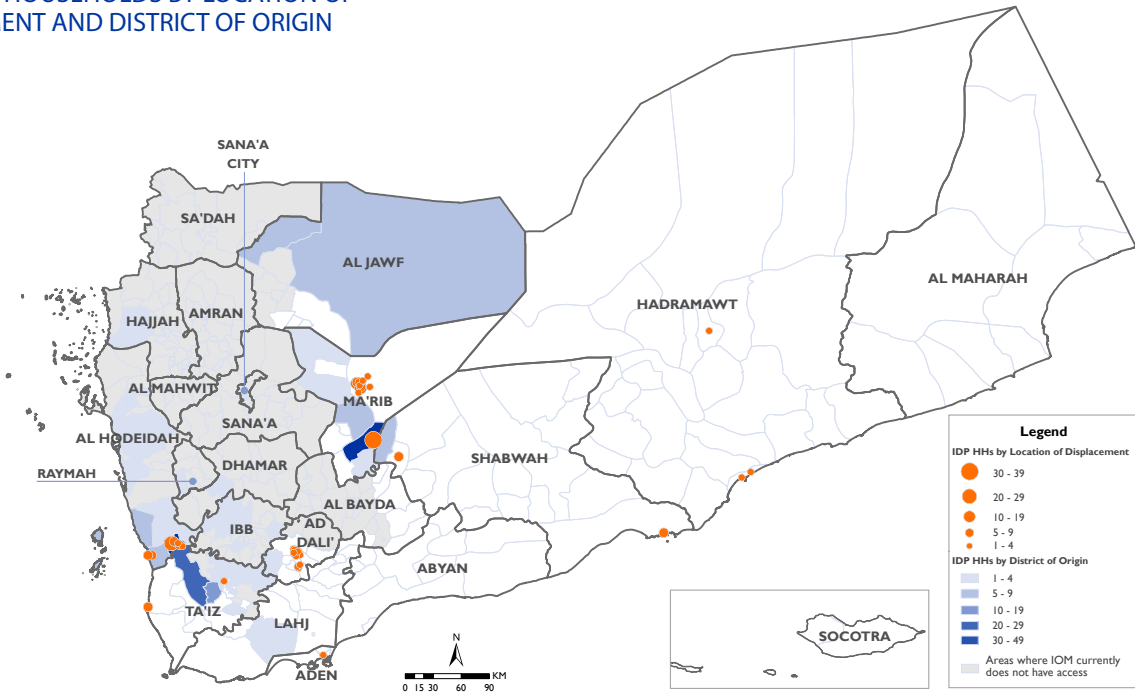
\* Displacement in Yemen refers to the 13 governorates where IOM DTM's team has access, namely: Abyan, Ad Dali', Aden, Al Bayda, Al Hodeidah, Al Jawf, Al Maharah, Hadramawt, Lahj, Ma'rib, Shabwah, Socotra, Ta'iz.

\*\* IOM DTM estimates that one household represents six individuals.

| Governorate of Displacement | IDP HHs Displaced during the week 13 to 19 Feb 2022 | Total*** IDP HHs from 1 Jan to 19 Feb 2022 |
|-----------------------------|---|--|
| Ma'rib                      | 81  | 674  |
| Al Hodeidah                 | 54  | 1,074                                      |
| Ad Dali'                    | 35  | 214  |
| Shabwah                     | 13  | 697  |
| Ta'iz                       | 11  | 452  |
| Hadramawt                   | 7   | 46   |
| Aden                        | 1   | 111  |
| Al Maharah                  | 0   | 73   |
| Lahj                        | 0   | 20   |
| Abyan                       | 0   | 7  |
| Al Jawf                     | 0   | 0  |
| Al Bayda                    | 0   | 0  |
| Socotra                     | 0   | 0  |
| TOTAL                       | 202   | 3,368                                      |

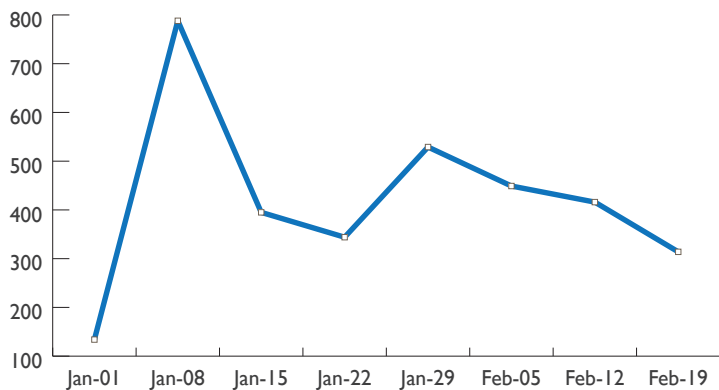
\*\*\* New arrivals recorded by IOM DTM within the reporting period. This does not necessarily represent the exact total increase of HHs due to an unknown number of instances of multiple displacements and/or return.

### DISPLACED HOUSEHOLDS BY LOCATION OF DISPLACEMENT AND DISTRICT OF ORIGIN



This map is for illustration purposes only. Name boundaries on this map do not imply official endorsement or acceptance by IOM.

#### NUMBER OF IDP HHs DISPLACED PER WEEK



#### MAIN NEEDS OF IDP HHs DURING THE REPORTING PERIOD

