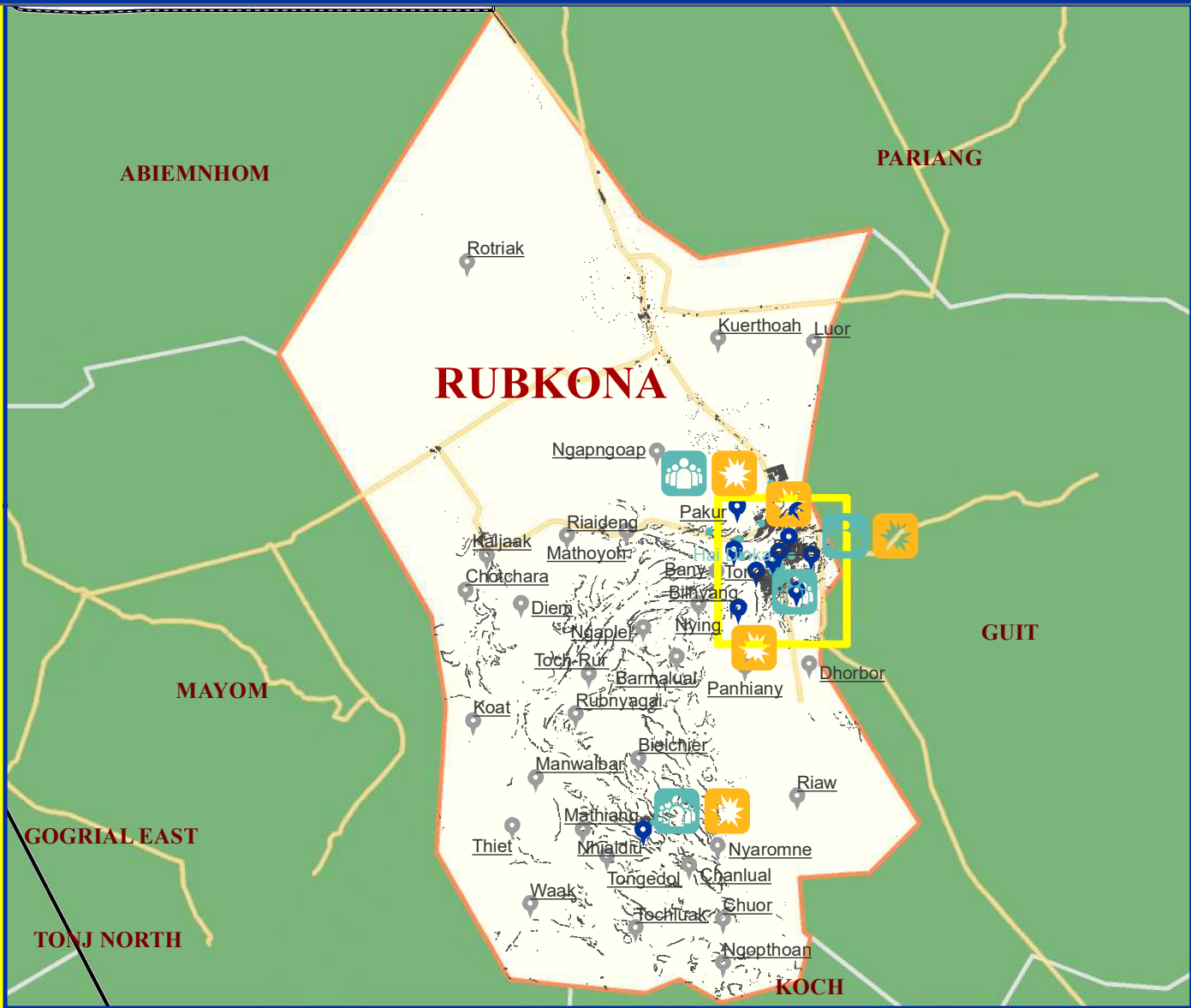
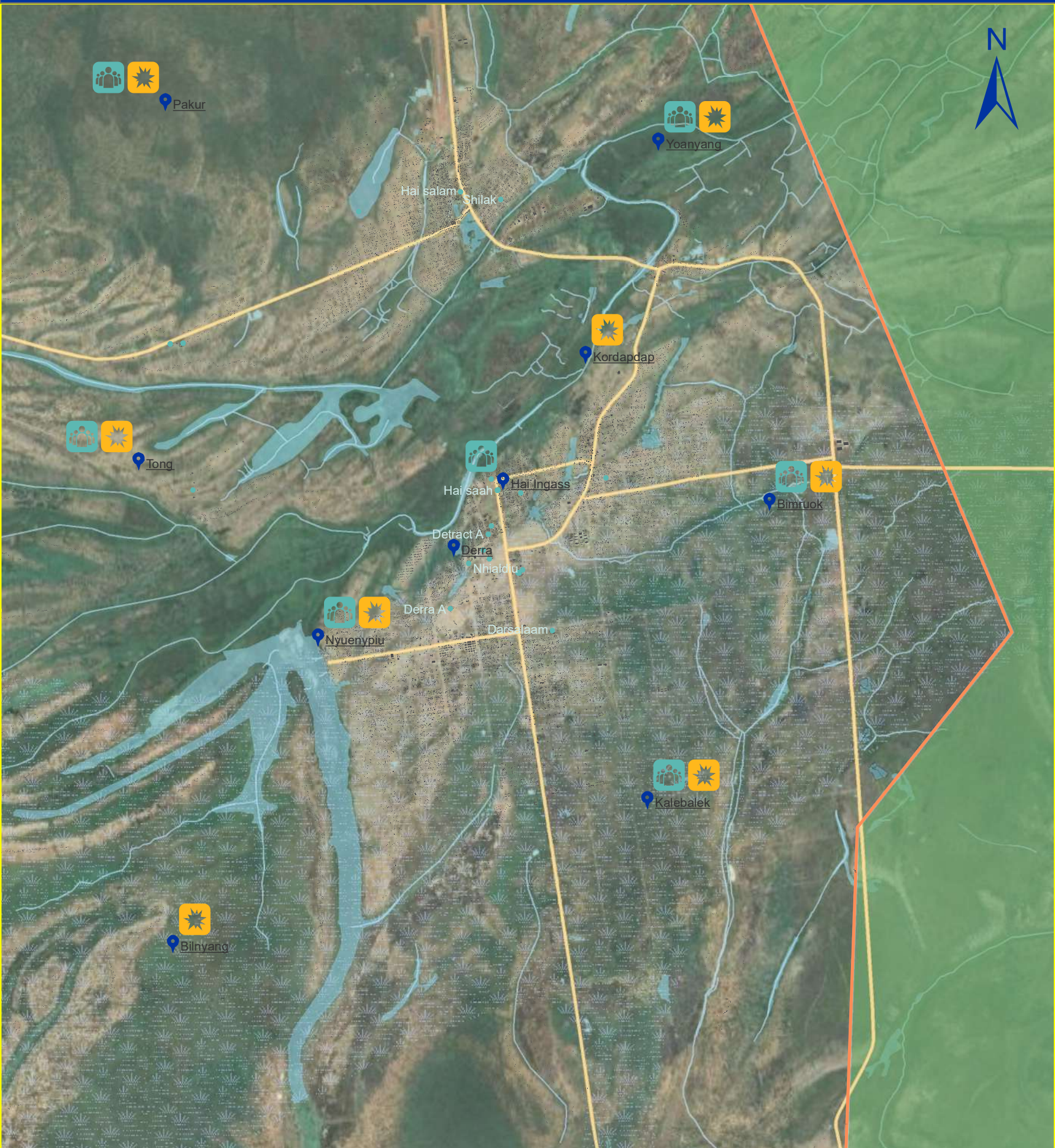


Water managment and related conflict

Unity_Rubkona



Legend

Boma Coverage

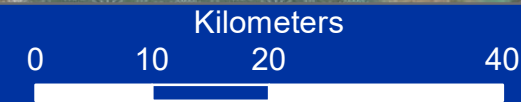
- Assessed
- Not Assessed
- Boma Name
- Village
- Buildings
- State

- Roads Roads
- County of interest
- County
- Waterways
- Marshland
- Waterbodies

Water managment and related conflict

- Conflict water in communities
- Water user committee
- Water sources used as at a fee

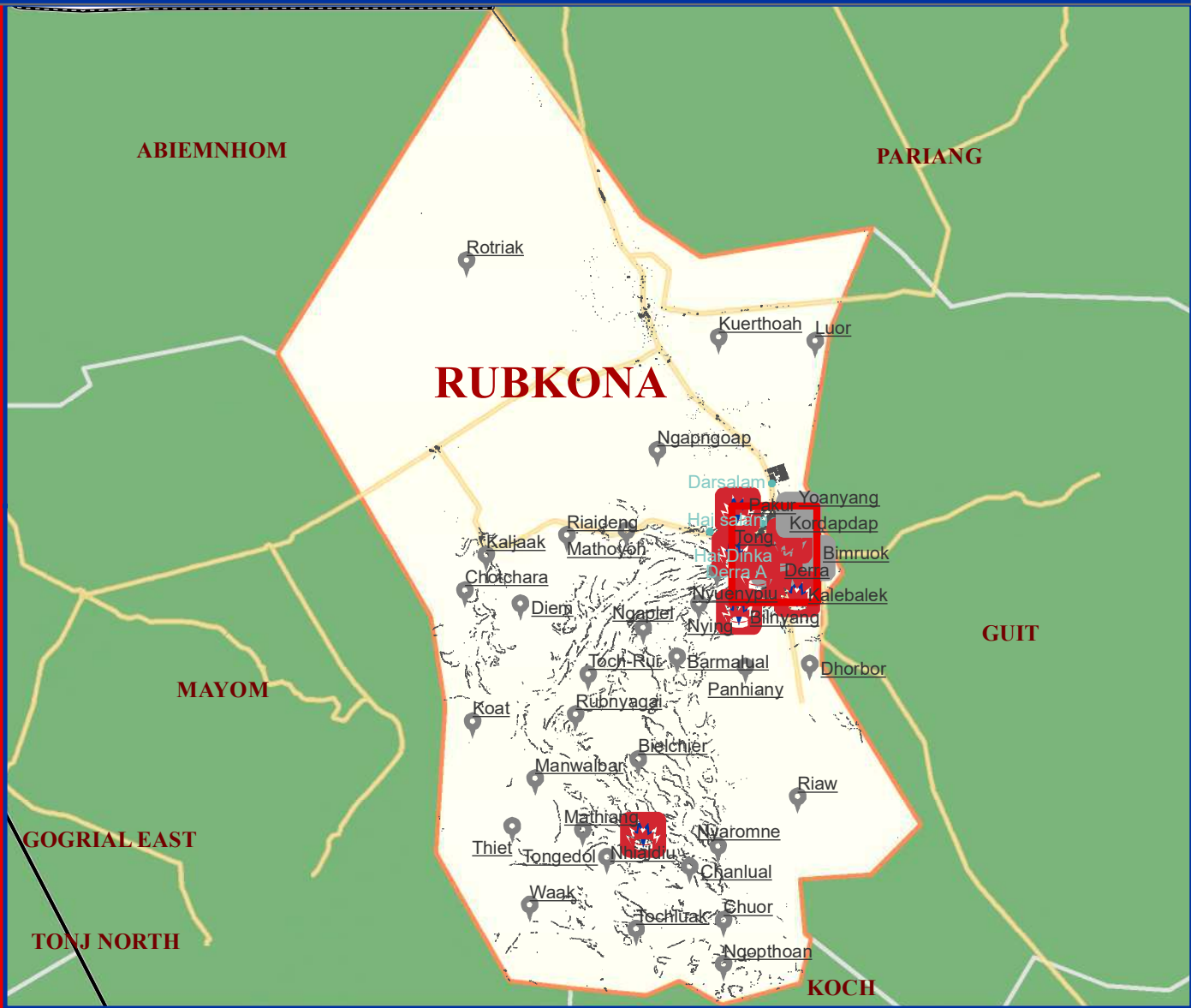
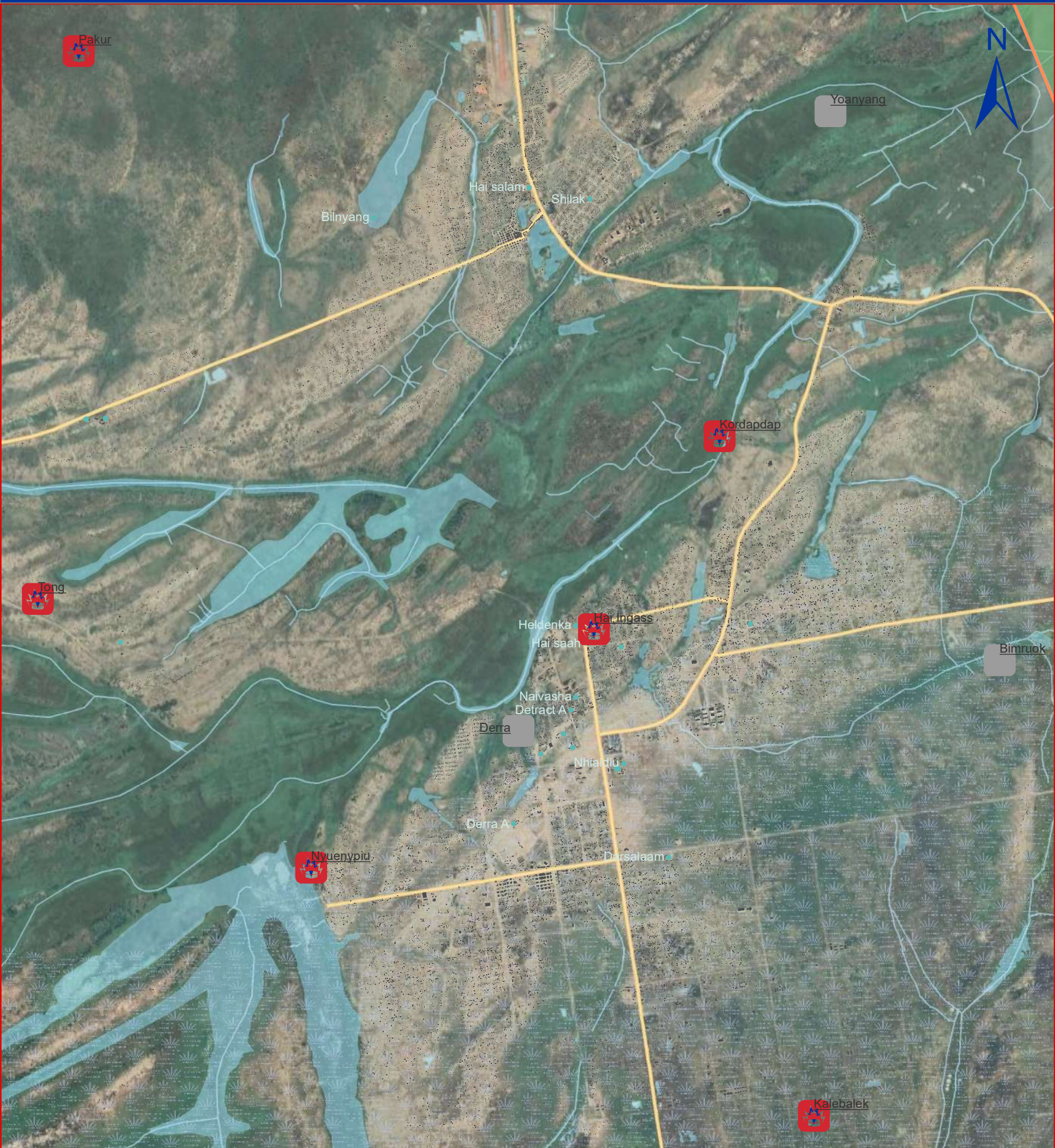
Data Source: IOM/DTM, NBS, OCHA, Maxar, OSM
Year: 2019
Comments & feedback: southsudandtm@iom.int



The boundaries on the map do not imply official endorsement or acceptance by the Government of the Republic of South Sudan or by IOM. The map is for planning purposes only. IOM cannot guarantee that the map is error free and therefore accepts no liability for consequential or indirect damages arising from its use.

Presence of mines or UXOs

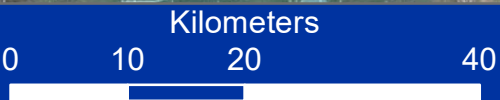
Unity_Rubkona



Legend

- | | | |
|-----------------------|--------------------|-------------|
| Boma coverage | Boma Name | County |
| Not assessed | Village | Waterways |
| Assessed | Buildings | Marshland |
| Presence mines | State | Waterbodies |
| Yes | Roads | |
| No | County of interest | |

Data Source: IOM/DTM, NBS, OCHA, Maxar, OSM
Year: 2019
Comments & feedback: southsudandtm@iom.int



The boundaries on the map do not imply official endorsement or acceptance by the Government of the Republic of South Sudan or by IOM. The map is for planning purposes only. IOM cannot guarantee that the map is error free and therefore accepts no liability for consequential or indirect damages arising from its use.