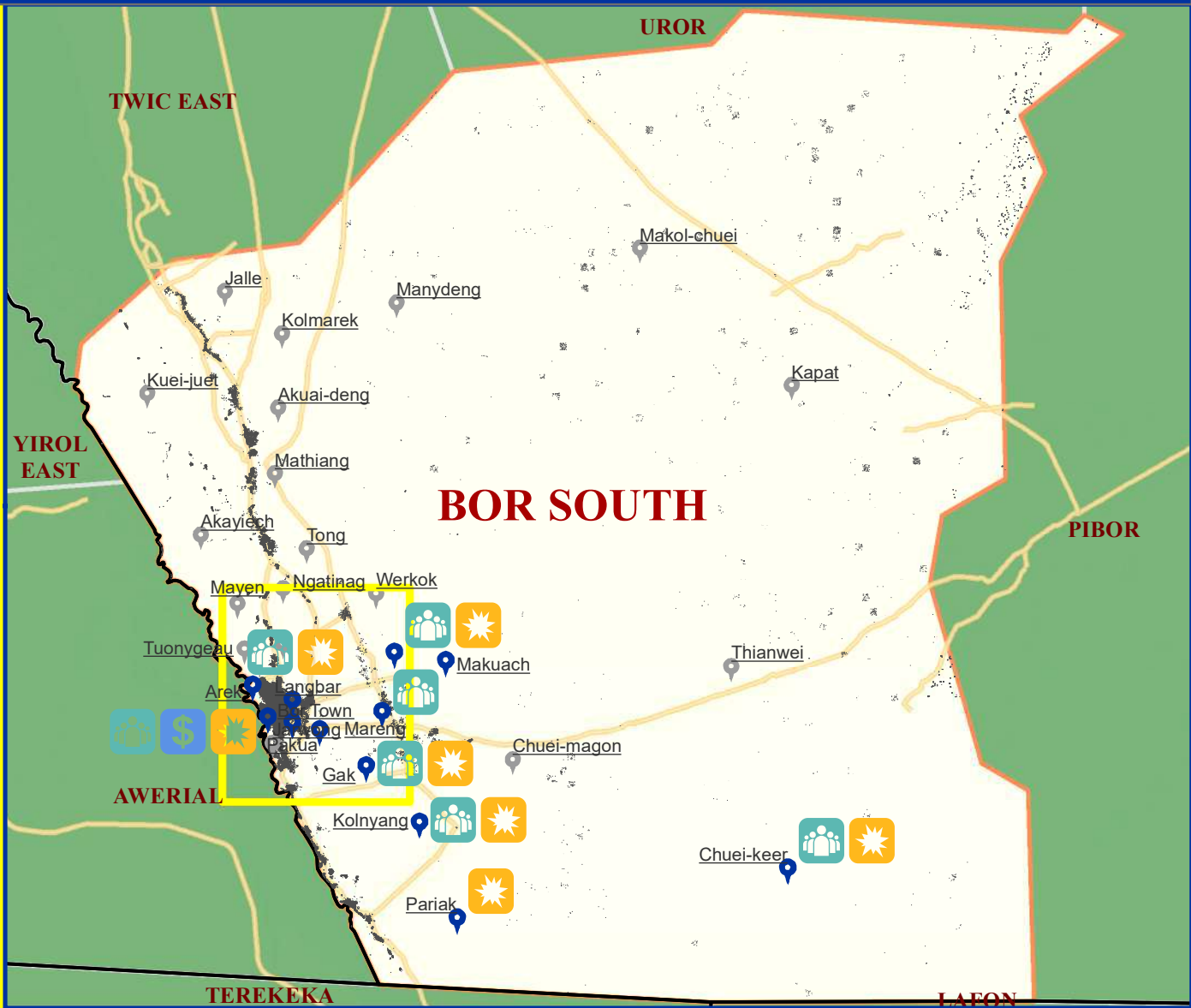
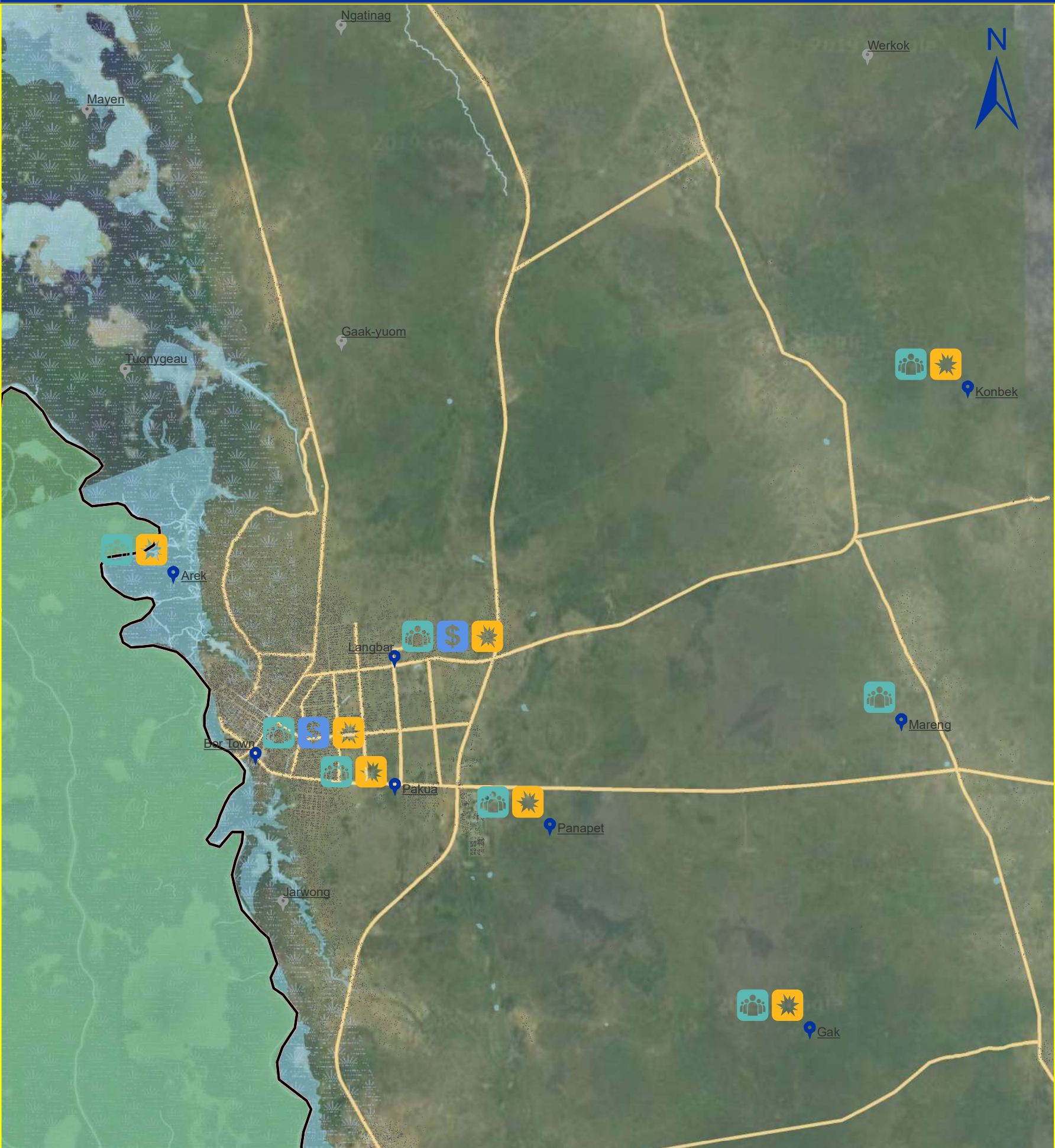


# Water managment and related conflict

Jonglei\_Bor South



## Legend

### Boma Coverage

- Assessed
- Not Assessed
- Boma Name
- Village
- Buildings
- State

- Roads Roads
- County of interest
- County
- Waterways
- Marshland
- Waterbodies

### Water managment and related conflict

- Conflict water in communities
- Water user committee
- Water sources used as at a fee

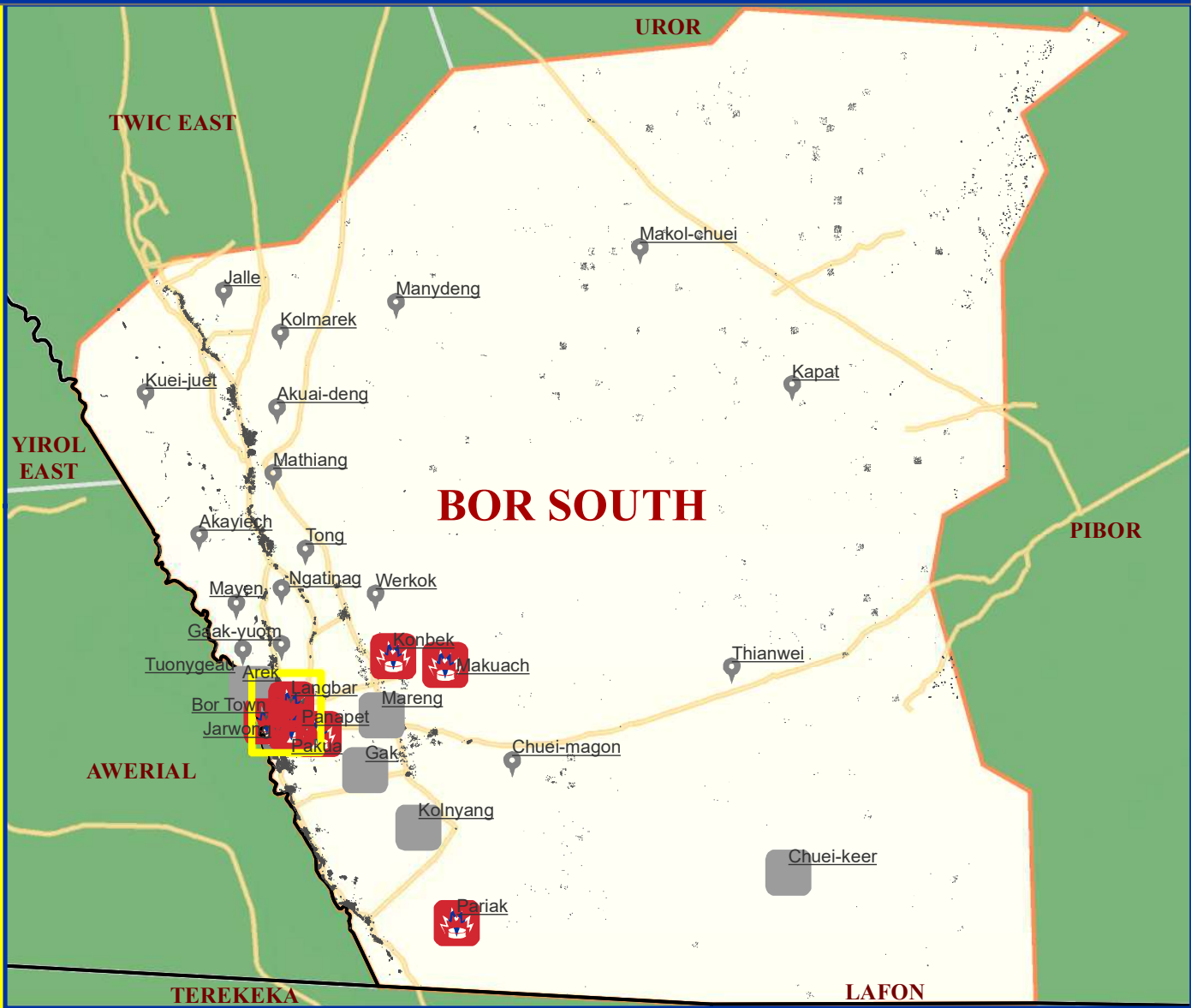
Data Source: IOM/DTM, NBS, OCHA, Maxar, OSM  
Year: 2019  
Comments & feedback: [southsudandtm@iom.int](mailto:southsudandtm@iom.int)

The boundaries on the map do not imply official endorsement or acceptance by the Government of the Republic of South Sudan or by IOM. The map is for planning purposes only. IOM cannot guarantee that the map is error free and therefore accepts no liability for consequential or indirect damages arising from its use.



# Presence of mines or UXOs

Jonglei\_Bor South



### Legend

**Boma coverage**

- Not assessed
- Assessed

**Presence mines**

- Yes
- No

**Boma Name**

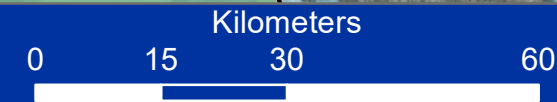
- Village
- Buildings
- State
- Roads
- County of interest

- County
- Waterways
- Marshland
- Waterbodies

Data Source: IOM/DTM, NBS, OCHA, Maxar, OSM

Year: 2019

Comments & feedback: [southsudandtm@iom.int](mailto:southsudandtm@iom.int)



The boundaries on the map do not imply official endorsement or acceptance by the Government of the Republic of South Sudan or by IOM. The map is for planning purposes only. IOM cannot guarantee that the map is error free and therefore accepts no liability for consequential or indirect damages arising from its use.