

February 2021



81 Head of households interviewed

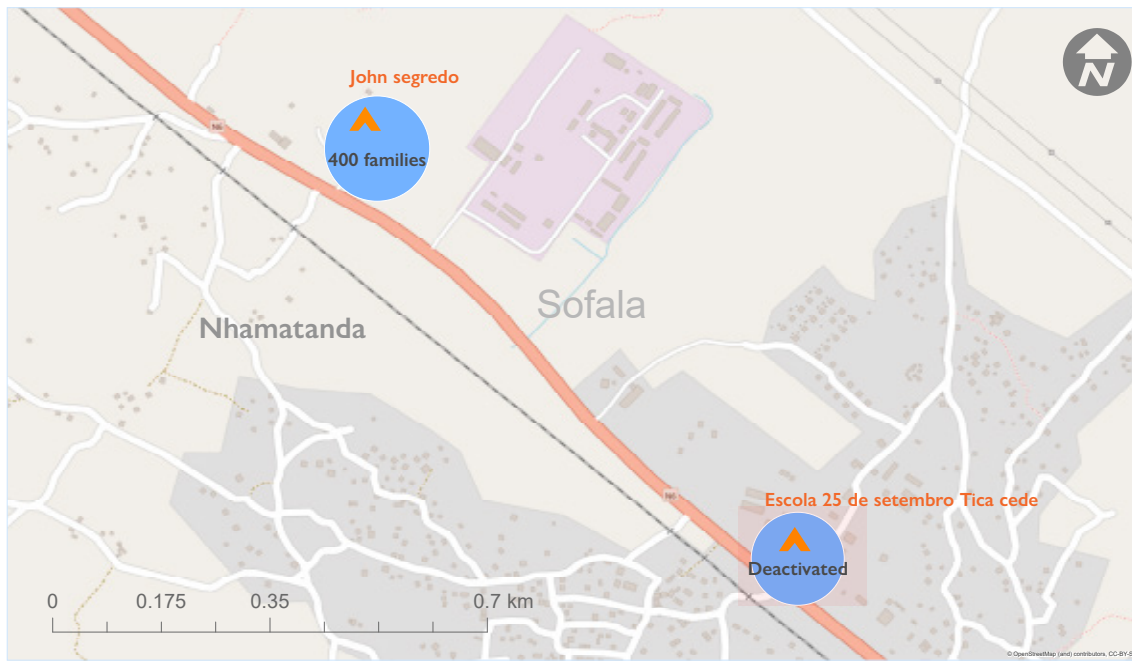


400 Family members

Accounting for



1 Accommodation Centre



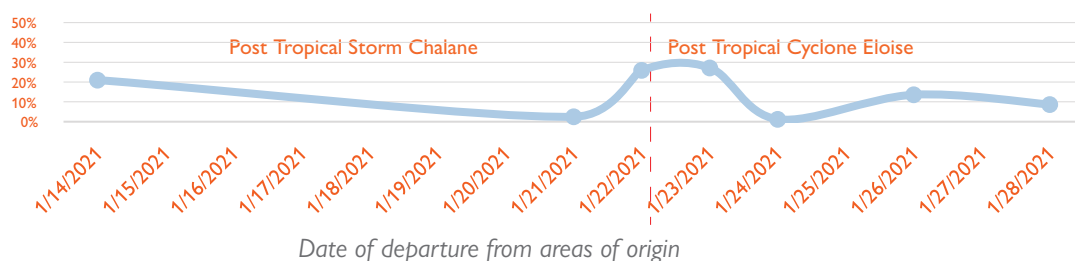
On 13 February 2021, in close coordination with the Mozambique's National Institute for Disaster Management and Risk Reduction (INGD), International Organization for Migration (IOM) DTM, and the CCCM Cluster together with the Local HCT and the district authority conducted an intention survey, at household level, in accommodation centres located in Beira district of Sofala province. A total of 81 heads of households (accounting for 400 family members) were interviewed during this exercise to understand their intentions and concerns.

The findings from the 81 households were used as a basis to generalise to a population of approximately 926 individuals staying in the accommodation centre in Nhamatanda. The margin of error on reported findings is 9.6 percentage points with a 95 per cent level of confidence.

The boundaries and names shown and the designations used on this map do not imply official endorsement or acceptance by the International Organization for Migration.

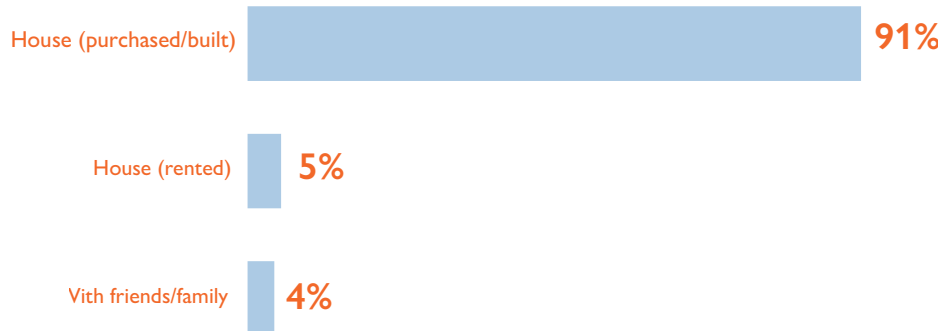
DATE OF DEPARTURE FROM AREAS OF ORIGIN

The majority of families (77%) in the accommodation centres left their area of origin post Tropical Cyclone Eloise and the remaining 23 per cent departed post Tropical Storm Chalane.



RESIDENCE PRIOR TO DISPLACEMENT

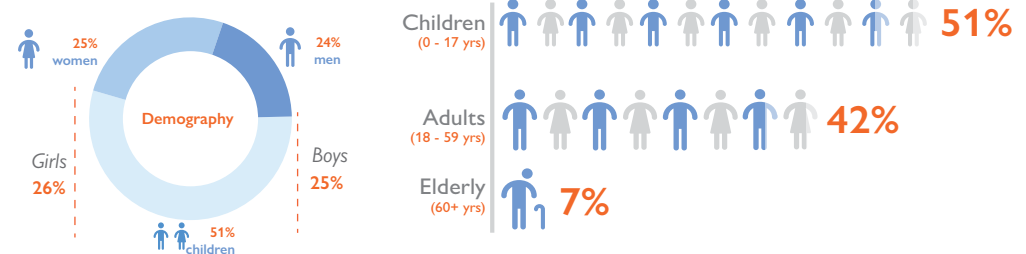
Ninety-one per cent of all IDP households had been living in their own house prior to evacuation, while five per cent had been living in rented houses and four per cent had been residing with family members or friends



Type of house in which families lived prior to displacement.

DEMOGRAPHIC PROFILES OF HOUSEHOLDS INTERVIEWED

The majority (51%) of families interviewed are composed of children, while 25 per cent are women and 24 per cent are men. Among the surveyed households, 29 elderly people (7% of the total number of family members surveyed) were identified.

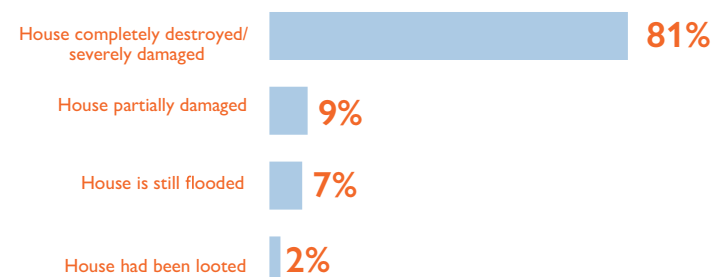


Percentage of population by sex and age group

Percentage of population by age group

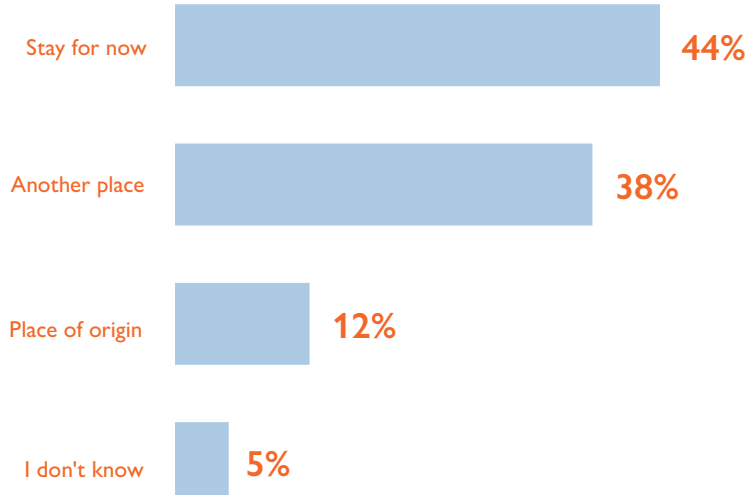
HOUSING STATUS OF RESPONDANTS

The majority of the households had their houses completely destroyed or severely damaged (81%), while nine per cent have houses that are partially damaged, seven per cent still have their house flooded and two per cent of the houses had been looted.

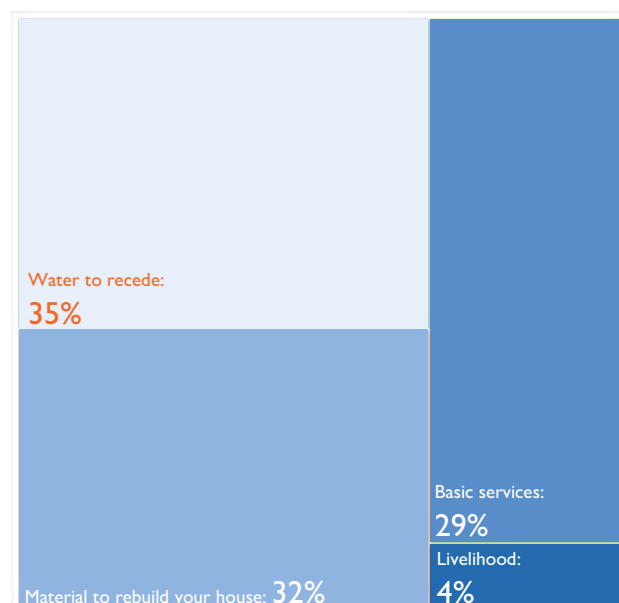


Current state of house in which families had lived prior to displacement

RETURN INTENTION

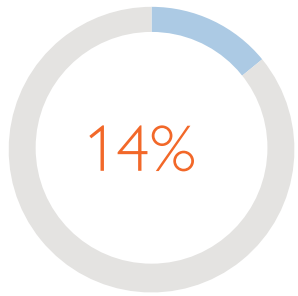


Forty-four per cent of households indicated their intention to remain for the time being. While another 38 per cent would like to relocate to another place, 12 per cent said they wanted to return to their place of origin and five per cent had not decided yet, pending information and support.

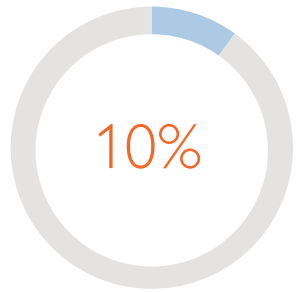


Assistance/conditions needed to return to place of origin

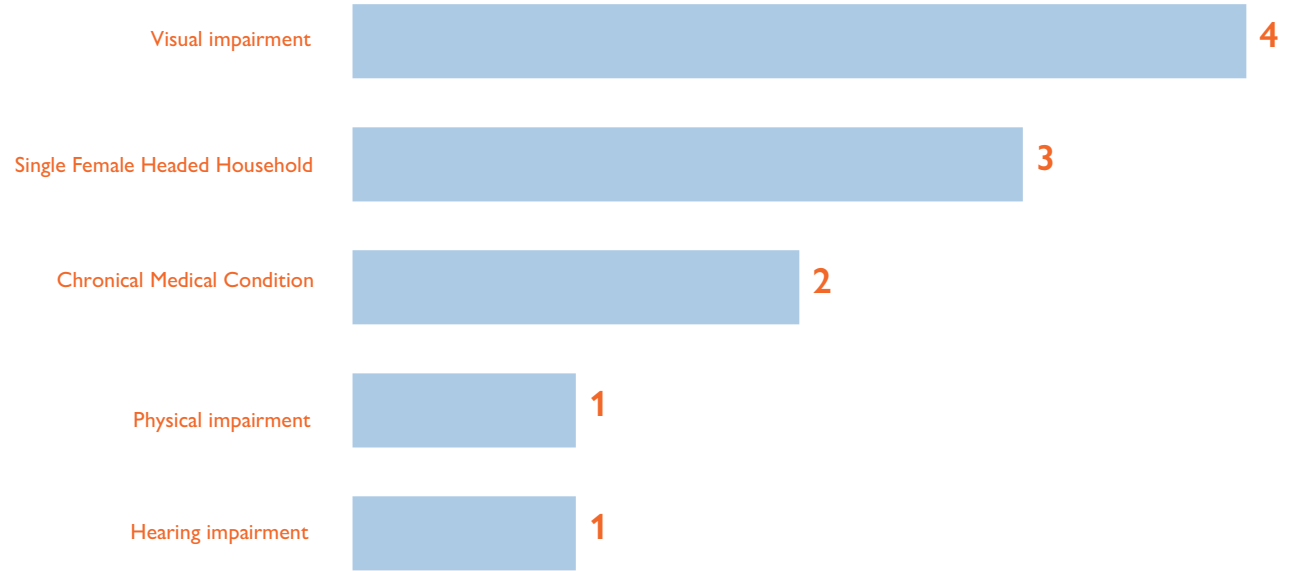
VULNERABILITIES



14% of the households interviewed have Persons with Specific needs (PSN)



10% of the identified PSN will have difficulty returning home.



Vulnerabilities

ACCOMMODATION CENTRES BY NUMBER OF INTERVIEWS CONDUCTED/INTENTION PERCENTAGE

Site name	What is your household intention?	Count of interviewed by intention	Percentage of interviewed by intention
John Segredo	I don't know (no decision yet)	4	5%
	I want to go to another place	31	38%
	I want to remain where I am for the moment	36	44%
	I want to return to my place of origin	10	12%

ORIGIN OF FAMILIES IN JOHN SEGREDO ACCOMMODATION CENTRE

