

EMERGENCY TRACKING TOOL (ETT)

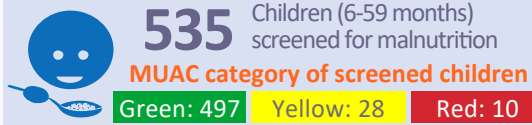
DTM Emergency Tracking Tool (ETT) is deployed to track and provide up-to-date information on sudden displacement and other population movements

ETT Report: No. 103 | 21 - 27 January 2019

Movements

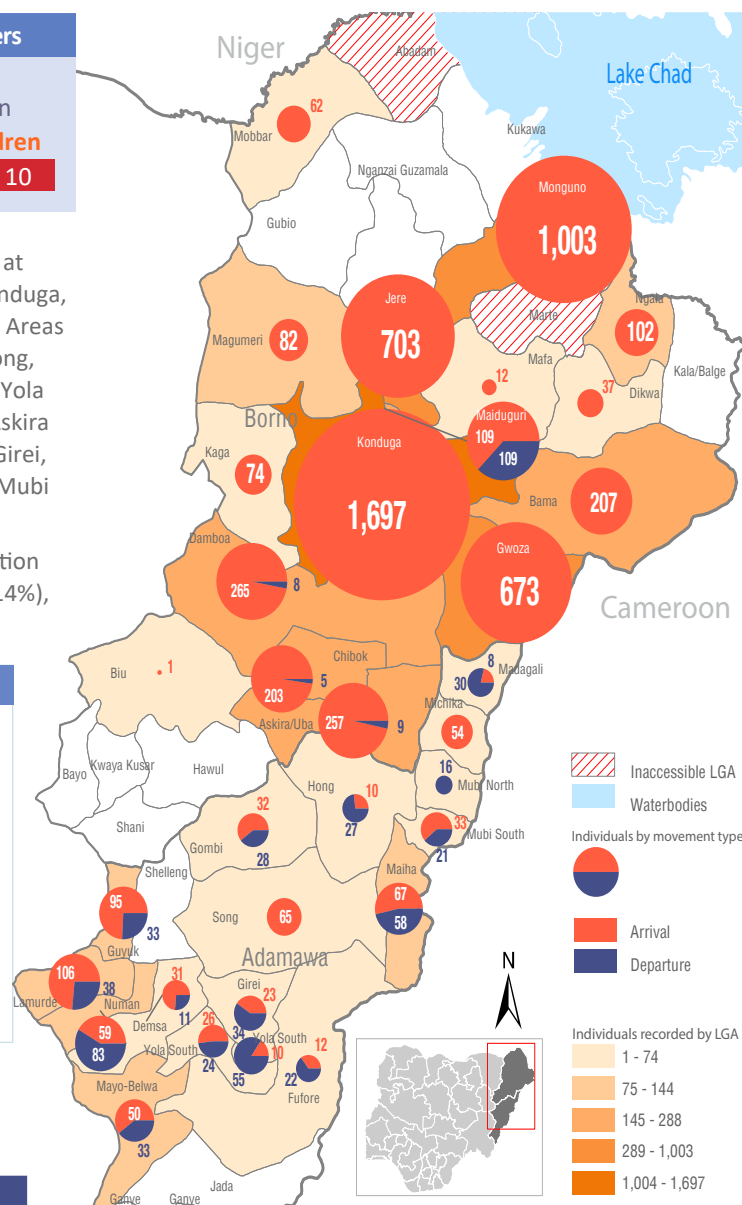
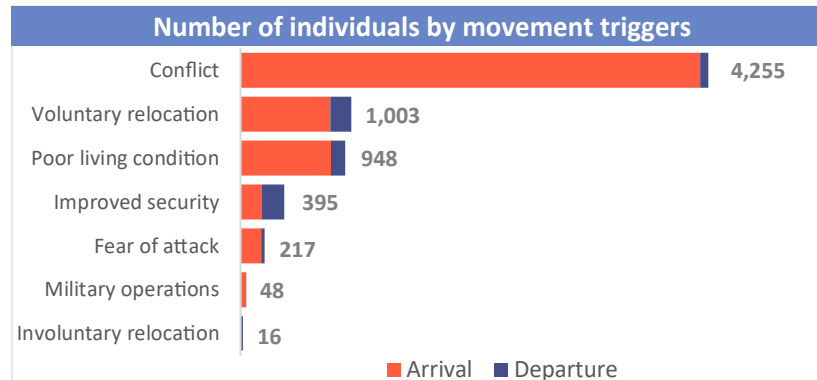


New Arrival Screening by Nutrition Partners

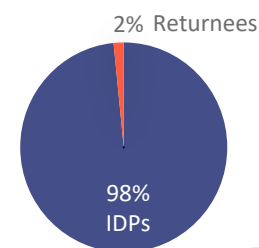


Within the period of 21-27 January 2019, a total of 6,882 movements were recorded, including 6,240 arrivals and 642 departures. Arrivals were recorded at locations in Askira Uba, Bama, Chibok, Damboa, Dikwa, Gwoza, Jere, Kaga, Konduga, Mafa, Magumeri, Maiduguri, Mobbar, Monguno and Ngala Local Government Areas (LGAs) of Borno state and locations in Demsa, Fufore, Girei, Gombi, Guyuk, Hong, Lamurde, Madagali, Maiha, Mayo Belwa, Michika, Mubi South, Numan, Song, Yola North and Yola South LGAs of Adamawa state. Departures were recorded at Askira Uba, Chibok, Maiduguri and Damboa LGA of Borno state and Demsa, Fufore, Girei, Gombi, Guyuk, Hong, Lamaurde, Madagali, Maiha, Mayo Belwa, Mubi North, Mubi South, Numan, Song, Yola North and Yola South LGA of Adamawa state.

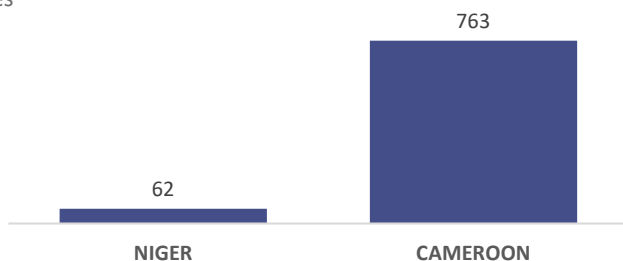
ETT assessments identified the following movement triggers: voluntary relocation (24%), improved security (6%), ongoing conflict (62%), poor living conditions (14%), military operations (1%) and fear of attacks (3%)



Affected population



Arrivals from Neighbouring Countries



Summary of major movements

Monguno: 1,003 arrivals were recorded in Monguno LGA of Borno state. These include 626 arrivals from Baga ward and 377 arrivals from Cross Kauwa ward of Kukawa LGA. The new arrivals reported to have relocated due to the ongoing conflict.

Konduga: 1,679 arrivals were recorded in Konduga LGA of Borno state. These include 1,086 arrivals from Monguno ward of Monguno LGA, 265 arrivals from Baga ward and 243 arrivals from Doro ward of Kukawa LGA and 3 arrivals from Titiya ward of Magumeri LGA of Borno state. The new arrivals reported to have relocated due to the ongoing conflict.

Jere: 703 arrivals were recorded in Jere LGA of Borno state. These include 684 arrivals from Baga ward of of Kukwa LGA and 3 arrivals from Gajiram ward of Nganzai LGA of Borno state. The new arrivals reported to have relocated due to the ongoing conflict.

Gwoza: 673 arrivals were recorded in Gwoza LGA of Borno state. These include 590 arrivals from Marwa in Cameroon, 72 arrivals from Shehuri ward of Bama LGA of Borno state, 6 arrivals from Dulo ward of Fufore LGA and 5 arrivals from Yelwa ward of Mubi North LGA of Adamawa state. 69% of the new arrivals reported to have relocated due to poor living conditions, 21% due to the ongoing conflict while 11% voluntarily relocated.

New Arrival Malnutrition Screening Summary (children 6-59 months)

An exhaustive nutrition screening using mid-upper arm circumference (MUAC) and Oedema for acute malnutrition was conducted by Sector partners for 535 children of 6-59 months. Of the 535 children screened, the MUAC reading was: 10 children (2 from inaccessible and 8 from accessible area) were in the Red category, 28 were in the Yellow category and 497 were measured in the Green category. No case of Oedema was reported in the 5 LGAs that sent in reports.

The results also include 47 children from a neighbouring countries (20 to Bama, 6 to Gwoza, 12 to Mobbar and 9 to Ngala): of all the 47 children measured, none was in red category, 45 were in the green category and 2 in the yellow category. All children found with severe acute malnutrition have been admitted for treatment. Please note, the data presented are not surveillance results and should be interpreted with caution.

LGA	MUAC Categories						Total
	Green ($\geq 12.5\text{cm}$)		Yellow (11.5 cm - 12.5cm)		Red ($< 11.5\text{cm}$)		
	In-Accessible	Accessible	In-Accessible	Accessible	In-Accessible	Accessible	
Bama	9	27	0	0	2	0	38
Gwoza	0	189	0	8	0	2	199
Konduga	0	234	0	19	0	6	259
Mobbar	0	12	0	0	0	0	12
Ngala	3	23	0	1	0	0	27
Total	12	485	0	28	2	8	535

■ Nourished

■ Moderate Acute Malnutrition (MAM)

■ Severe Acute Malnutrition (SAM)

Table 1. Details of movements by locations of assessment and locations of arrival/departure - only movements with at least 26 persons are listed below

Tracking location			Movement location				
STATE	LGA	WARD	STATE	LGA	WARD	ARRIVAL	DEPARTURE
ADAMAWA	GUYUK	DUMNA	ADAMAWA	GUYUK	GUYUK	36	-
	LAMURDE	LAFIYA	GOMBE	BALANGA	BAMBAM	31	-
				BILLIRI	BILLIRI TANGALE	27	-
			BORNO	ASKIRA/UBA	NGOSHE	41	-
				MAYO BELWA	MAYO BELWA	12	26
	MUBI SOUTH	GUDE	ADAMAWA	MADAGALI	MADAGALI	26	-
	NUMAN	IMBURUM	ADAMAWA	GUYUK	DUMNA	-	33
NUMAN 2		NUMAN		BARE	41	-	
SONG	SONG GARI	ADAMAWA	SONG	DUMNE	-	28	
BORNO	ASKIRA/UBA	MUSSA	BORNO	ASKIRA/UBA	CHULL/RUMIRGO	38	-
		ZADAWA		CHIBOK	GATAMARWA	26	-
	BAMA	SHEHURI	BORNO	BAMA	KOTE	203	-
				MAIDUGURI	BULUNKUTU	36	-
				CAMEROON	MARWA	MINAWAWO	92
	CHIBOK	GATAMARWA	BORNO	ASKIRA/UBA	ZADAWA	262	-
	DAMBOA	DAMBOA CENTRAL	YOBE	GUJBA	GONIRI	26	-
	DIKWA	DIKWA CENTRAL	EDO	BENIN	BEININ CITY	117	-
		BULABULIN/WAKANE	CAMEROON	MARWA	MORA	72	-
		PULKA/BOKKO	BORNO	BAMA	SHEHURI	456	-
	JERE	OLD MAIDUGURI	CAMEROON	MARWA	MORA	684	-
	KAGA	BENESHEIKH	BORNO	KUKAWA	BAGA	74	-
	KONDUGA	AUNO/CHABBOL	BORNO	MAGUMERI	MAGUMERI	243	-
		DALORI		KUKAWA	DORO	1,086	-
	MAGUMERI	GAJIGANNA	BORNO	MONGUNO	MONGUNO	365	-
				KUKAWA	BAGA	37	-
					CROSS KAUWA	41	-
	MAIDUGURI	BOLORI 1	BORNO	KUKAWA	BAGA	9	74
					CROSS KAUWA	30	-
		MAISANDARI		KONDUGA	MUSARI	34	-
SOJIRI					71	33	
MOBBAR	DAMASAK CENTRAL	NIGER	DIFFA	SHETTIMARI	58	-	
MONGUNO	MONGUNO	BORNO	KUKAWA	BAGA	564	-	
				CROSS KAUWA	204	-	
				KAUWA	173	-	
				KUKAWA	62	-	
NGALA	NGALA	BORNO	KALA BALGE	RANN	45	-	
		CAMEROON	MARWA	KUSSURI	57	-	

The depiction and use of boundaries, geographic names, and related data shown on maps and included in this report are not warranted to be error free nor do they imply judgment on the legal status of any territory, or any endorsement or acceptance of such boundaries by IOM.

For more information or to report an alert, please contact:

Henry Kwenin, DTM Project Coordinator: hkwenin@iom.int | +234 9038852524

Bercasio Dave, Emergency Coordinator: dbercasio@iom.int | +234 9075070001

DTM information products: <http://nigeria.iom.int/dtm>