

EMERGENCY EVENT TRACKING

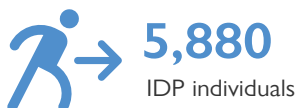
Data collection: 8 December 2021

CONFLICT



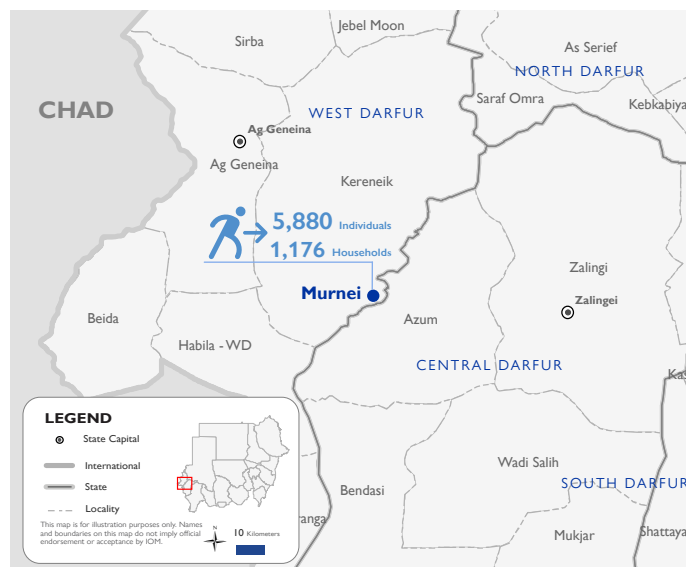
The DTM Emergency Event Tracking (EET) is deployed to track sudden displacement and population movements, provide more frequent updates on the scale of displacement, and quantify the affected population when needed. As a subcomponent of the new Mobility Tracking methodology in Sudan ([Round Two](#)), and activated on a need basis, EET utilises a broad network of key informants to capture best estimates of the affected population presence per location – a useful tool for humanitarian response planning and design.

Event Overview

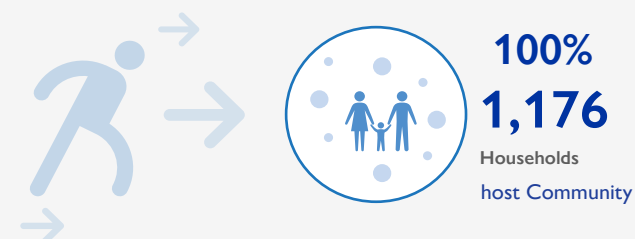


DTM teams activated EET to monitor the displacement of individuals affected by inter-communal clashes between Arab tribes in Murnei village in Kereneik locality, West Darfur on 29 November 2021. The first EET update estimates that a total number of 5,880 individuals (1,176 households) have been displaced to Murnei village, West Darfur (100%). The IDP caseload was originally displaced from the villages of Tour (34%), Solom Arow (17%), Delu Duo (14%), Arow (12%), Bala (10%), and Deraka (10%) in Azoom locality, Central Darfur, and Achmara village (3%) in Kereneik locality, West Darfur.

DTM field teams could not confirm any deaths, injuries, or reports of lost goods, personal belongings, or livestock. All displaced individuals are Sudanese nationals. At least 1,497 cases of additional vulnerabilities in need of further support and assistance were identified through DTM's protection indicator. Based on a ranking scale, the three main priority needs for the displaced caseload are Emergency Shelter, Food, and Non-Food-Items (NFIs).

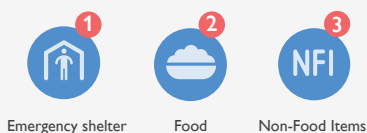


Shelter Indicator

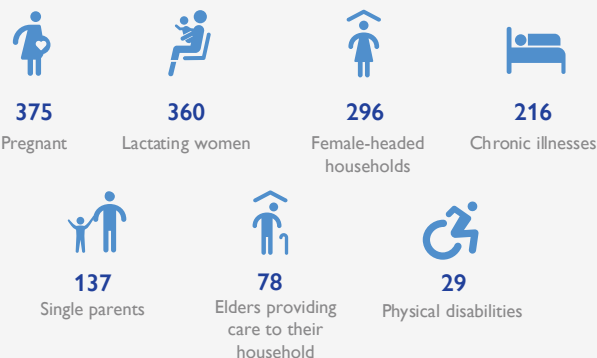


Priority Needs

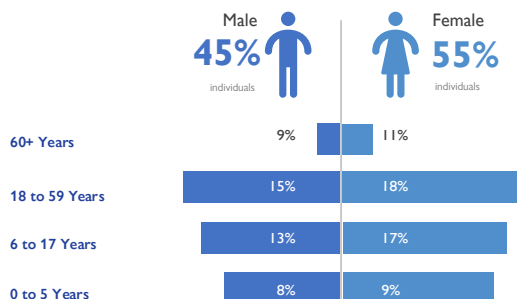
(Ranking scale)



Vulnerabilities



Demographics



Return Intention

Data collected through the return intention indicator suggests that all IDPs (100%) intend to return to their locations of origin upon improvement of the security situation.

IOM DISCLAIMER

The opinions expressed in the report are those of the authors and do not necessarily reflect the views of the International Organization for Migration (IOM). The designations employed and the presentation of material throughout the report do not imply the expression of any opinion whatsoever on the part of IOM concerning the legal status of any country, territory, city or area, or of its authorities, or concerning its frontiers or boundaries.

IOM is committed to the principle that humane and orderly migration benefits migrants and society. As an intergovernmental organization, IOM acts with its partners in the international community to: assist in the meeting of operational challenges of migration; advance understanding of migration issues; encourage social and economic development through migration; and uphold the human dignity and well-being of migrants.