

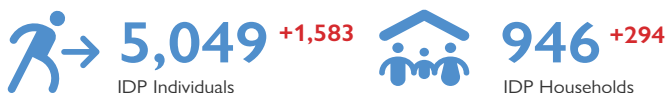
EMERGENCY EVENT TRACKING

Data collection: 18 April 2022

CONFLICT

The DTM Emergency Event Tracking (EET) is deployed to track sudden displacement and population movements, provide more frequent updates on the scale of displacement and quantify the affected population when needed. As a subcomponent of the new Mobility Tracking methodology in Sudan (Round Three), and activated on a need basis, EET utilises a broad network of key informants to capture best estimates of the affected population presence per location – a useful tool for humanitarian response planning and design.

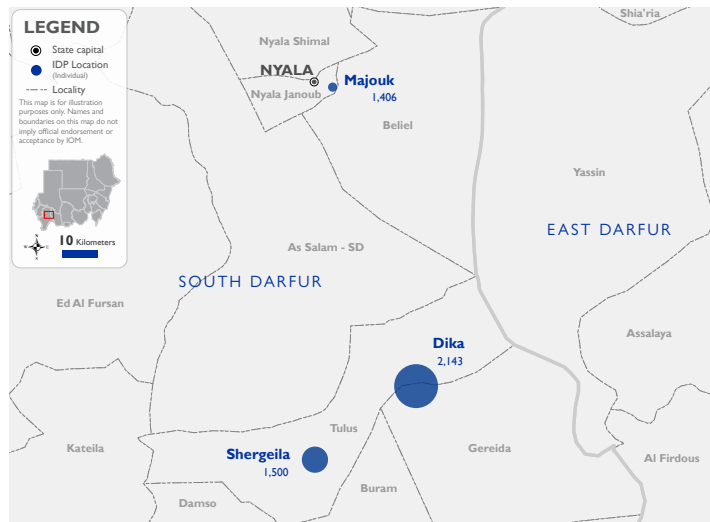
Event Overview



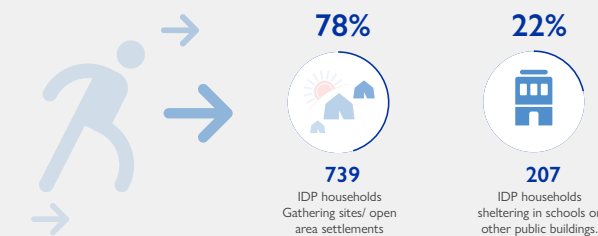
On 29 March 2022, inter-communal clashes between the Rezeigat and Falata tribes took place across Gereida and Tulus localities following an armed robbery in Al Radoum locality, South Darfur on 27 March 2022. For more information, please see [Tulus & Gereida \(Update 001\)](#). Field teams report that, since the previous EET, some IDPs seeking refuge near Gereida Town have now returned to the remaining structures within Dika village. Field teams have also identified an additional caseload moving further afield from Gereida locality to Majouk IDP camp in Nyala Janoub camp. No IDPs have been currently identified as residing in the outskirts of Gereida Town.

The second EET update estimates a total number 5,049 IDPs (946 households) currently seeking shelter in Dika village (42%) in Gereida locality, as well as Shergeila village (30%) in Tulus locality, and Majouk IDP camp (28%) in Nyala Janoub locality, South Darfur. The IDP caseload was originally displaced from Dika village (39%), Hadoub (30%), Abu Jabrah (15%), Tuel (6%), and Dagama (5%), Snam Elnaga (4%), and Abu Lala (1%) in Gereida locality, South Darfur.

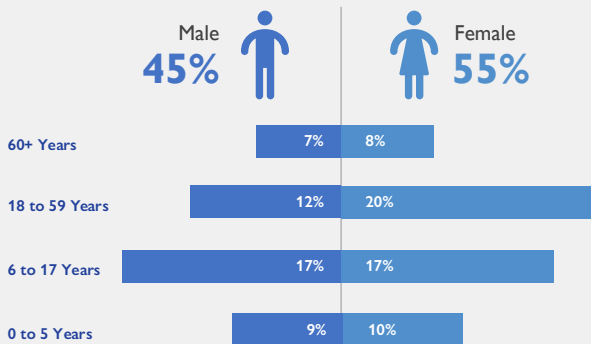
Field teams indicate that 97 individuals have been killed, 87 individuals were injured, and 886 individuals report lost goods, cattle and/or livestock. All displaced individuals are Sudanese nationals. Upon reverification, at least 189 cases of additional vulnerabilities in need of assistance and support were identified by key informants through DTM's protection indicator. Additionally, DTM Sudan estimates that there are approximately 757 persons with disabilities among the IDP caseload. Based on a ranking scale, the three priority needs across the caseload are Emergency Shelter, Food, and Non-Food Items.



Shelter Indicator

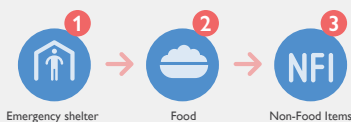


Demographics

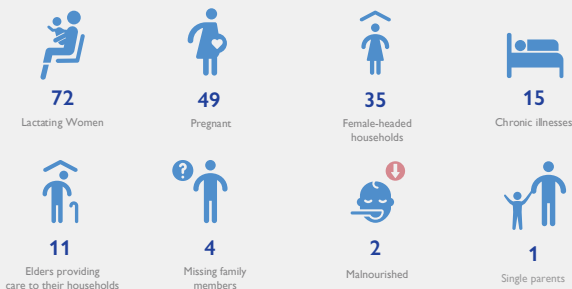


Priority needs

Ranking scale



Vulnerabilities



Return Intention

Data collected through the Return Intention indicator suggests that 2,906 IDPs (62%) intend to return to their locations of origin, with 2,143 individuals (38%) to remain in the same location upon improvement of the security situation.

IOM DISCLAIMER

The opinions expressed in the report are those of the authors and do not necessarily reflect the views of the International Organization for Migration (IOM). The designations employed and the presentation of material throughout the report do not imply the expression of any opinion whatsoever on the part of IOM concerning the legal status of any country, territory, city or area, or of its authorities, or concerning its frontiers or boundaries.

IOM is committed to the principle that humane and orderly migration benefits migrants and society. As an intergovernmental organization, IOM acts with its partners in the international community to: assist in the meeting of operational challenges of migration; advance understanding of migration issues; encourage social and economic development through migration; and uphold the human dignity and well-being of migrants.