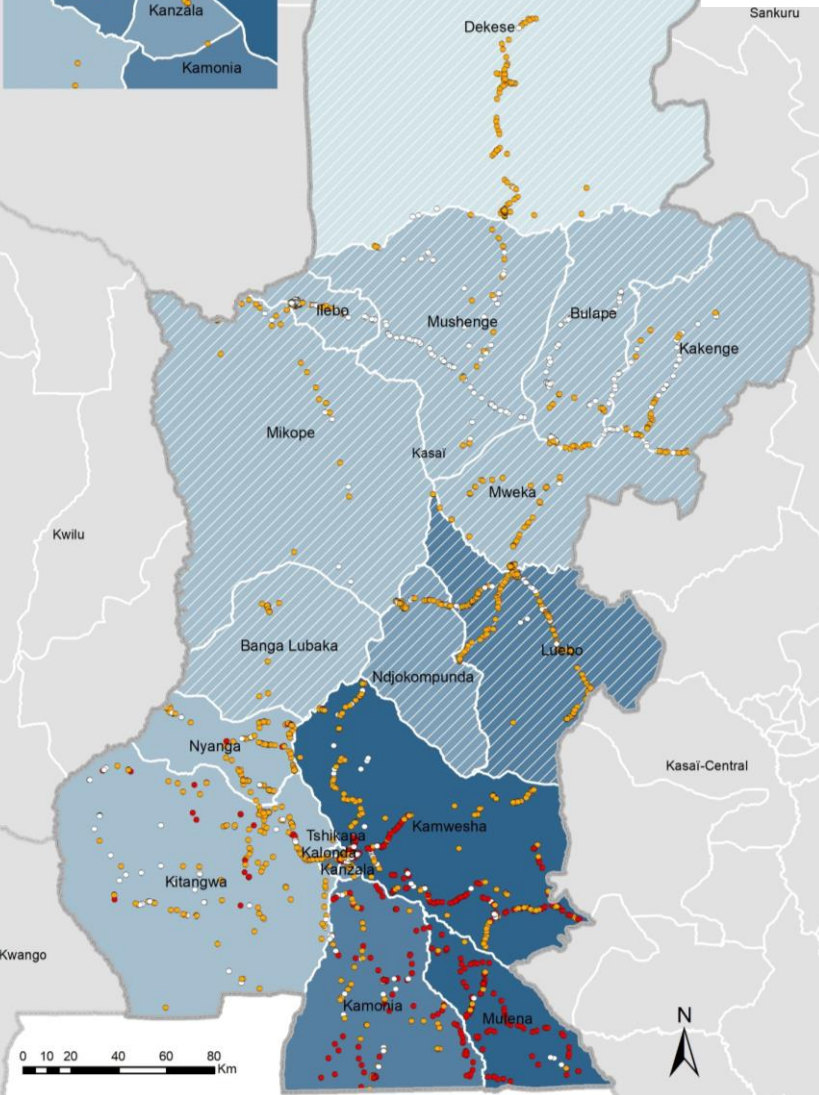
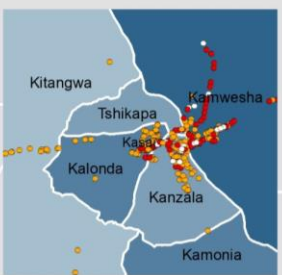


### Forced displacement and return movements in Kasai

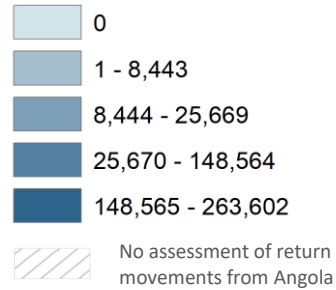


This dashboard provides the main findings of the mobility tracking assessments that were conducted in the province of Kasai. These assessments were conducted in all the accessible villages during two periods: from 3 to 31 July, and from 3 to 28 November 2018, in 327 health areas – which corresponds to 18 health zones. For these assessments, a total of 2,800 villages were evaluated through 6,497 key informant interviews by IOM's partner TDH.



Year of Displacement*	Number of Displaced individuals	Number of Returnees (Internal)
2018	45,729	185,721
2017	369,066	738,289
2016	36,323	12,145

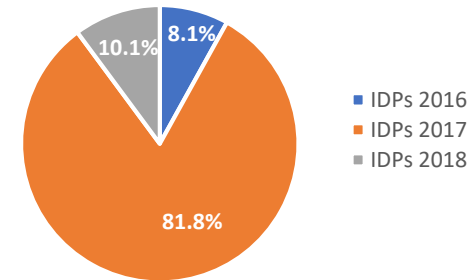
#### Number of Returnees per health zone



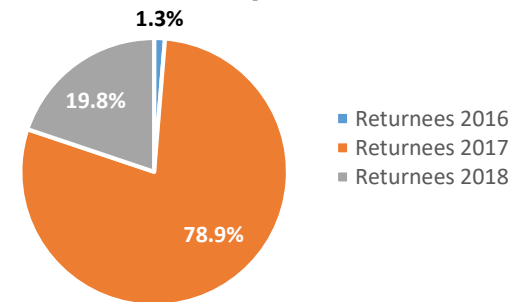
#### Presence of IDPs, returnees (internal) and individuals returning from Angola, in villages assessed

- IDPs or Returnees
- No IDPs, no returnees (internal), no returnees from Angola
- IDPs, Returnees (internal), Returnees from Angola

#### Displacement period



#### Return period



The maps contained in this report are for illustration purposes only. The depiction and use of boundaries, geographic names, and related data shown on maps and included in this report are not warranted to be free of error nor do they imply judgment on the legal status of any territory, or any endorsement or acceptance of such boundaries by IOM. Sources: basemap RGC (Référéntiel Géographique commun de la RDC), DTM assessment DRC / TDH, July / November 2018. Some geographical limits do not coincide with the data collected in the field. GPS coordinates have not been verified in the field.



Villages assessed

2,800



Key informants

6,497



IDPs\*

451,118



Returnees\* (Internal)

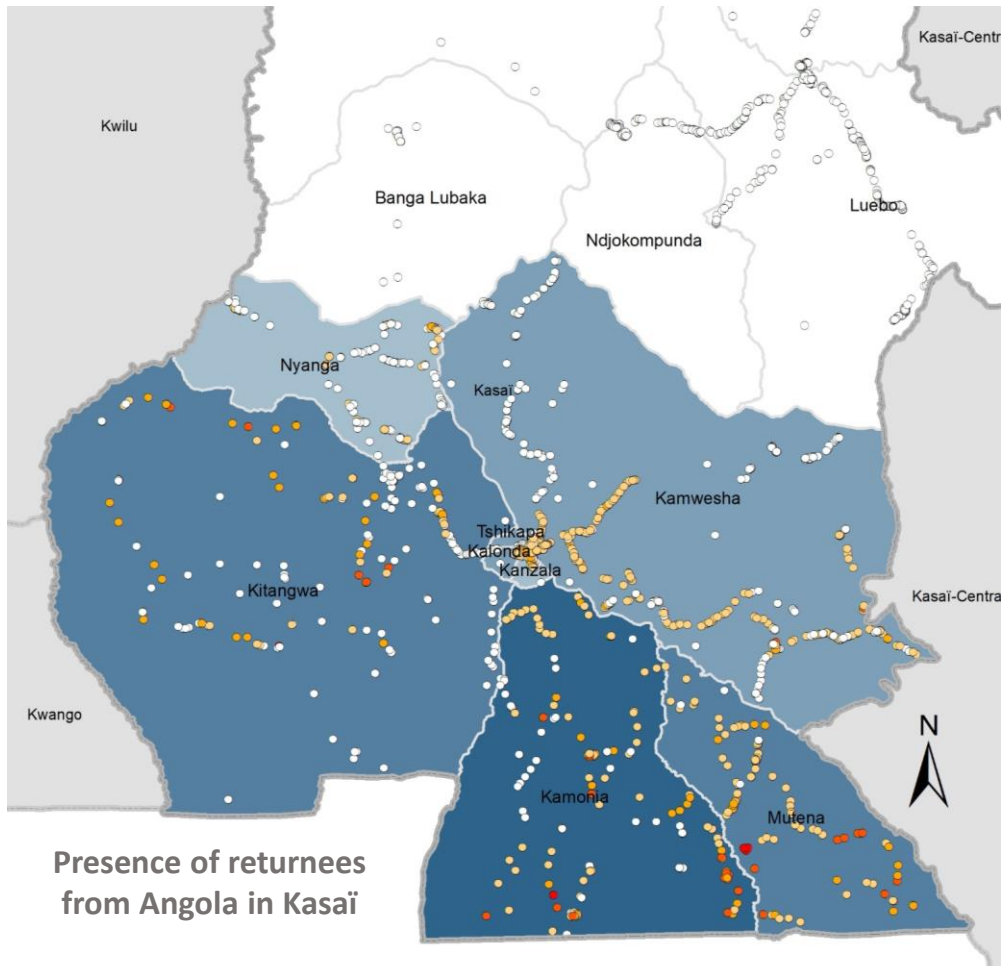
936,155



Returnees from Angola\*

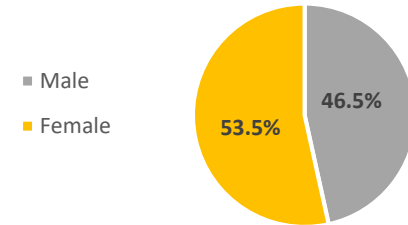
141,653

\* Estimates

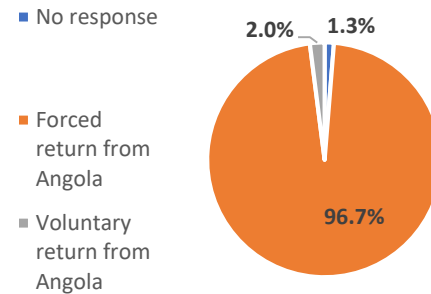


Presence of returnees from Angola in Kasai

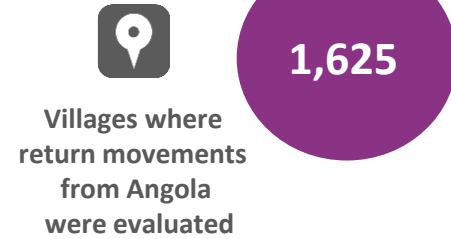
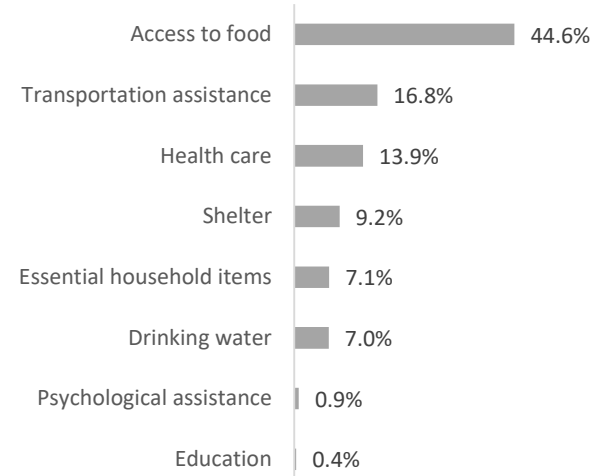
Returnees from Angola: Distribution by gender



Reason for leaving Angola



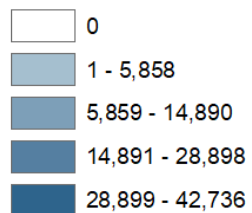
Priority needs of the majority of the returnees from Angola



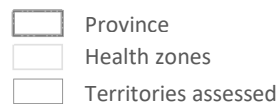
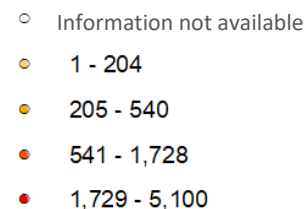
Month of arrival of Returnees from Angola	Number of returnees from Angola
August 2018	329
September 2018	803
October 2018	139,482
November 2018	1,039
<b>Total</b>	<b>141,653</b>



Number of returnees from Angola in health zones assessed



Number of returnees from Angola in villages assessed



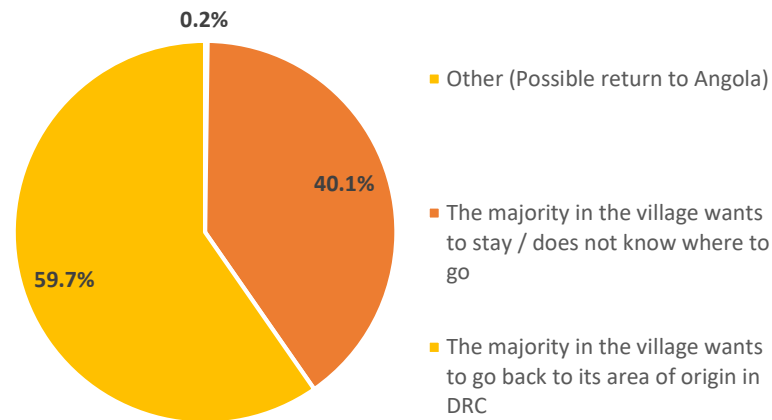
The notion of forced or voluntary return reflects only the view of the key informants who were interviewed during the assessments. It is possible that some individuals returning voluntarily from Angola, and in anticipation of a forced return, may have declared having been deported.

Sources: basemap RGC (Référentiel Géographique commun de la RDC), DTM assessment DRC / TDH, July / November 2018. Some geographical limits do not coincide with the data collected in the field. GPS coordinates have not been verified in the field.

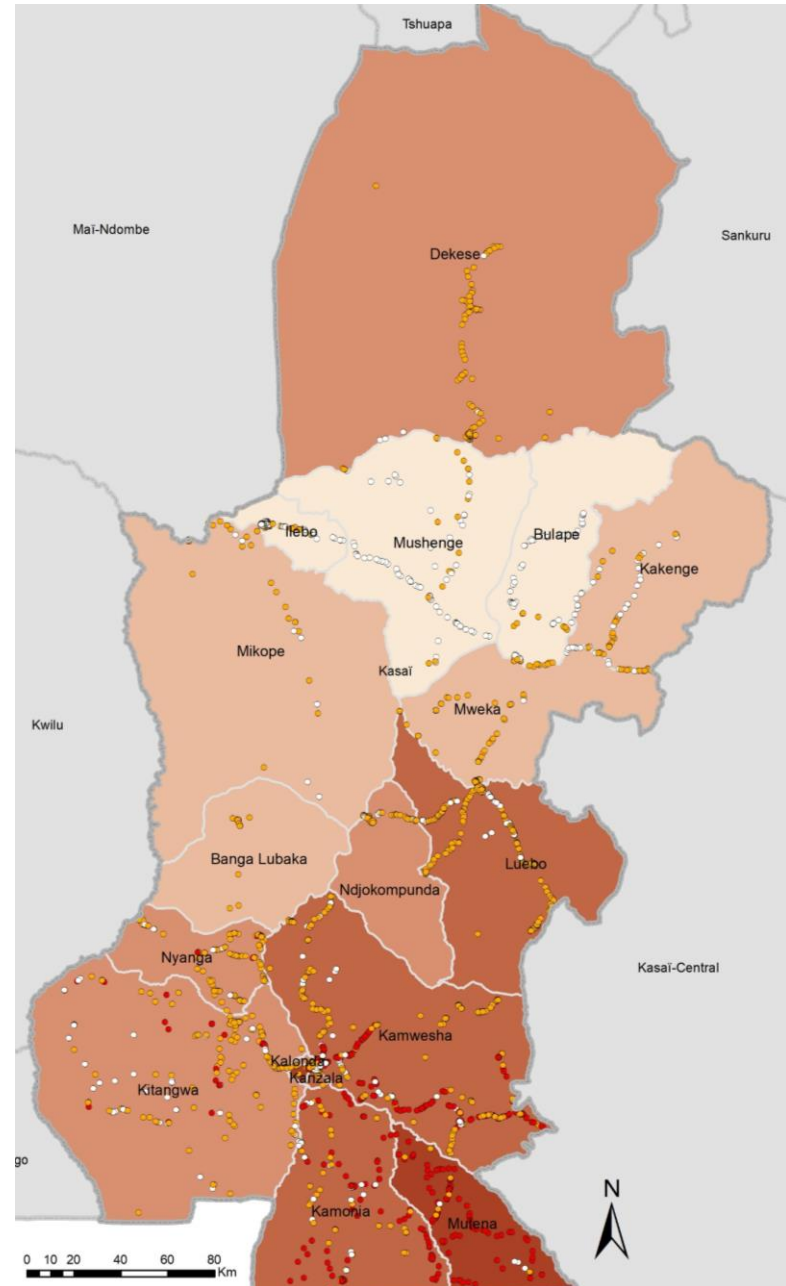
Territory	Province of origin	Consider returning to area of origin in DRC	% Consider returning to area of origin in DRC	Do not know where to go/intend to stay	% Do not know where to go/intend to stay	Other (Possible return to Angola)	% Other	Total	% Total
<b>KAMONIA</b>	KASAI	59,546	70.5%	41,431	72.9%	162	53.5%	<b>101,139</b>	71.4%
	KASAI CENTRAL	120	0.1%	276	0.5%	0	0.0%	<b>396</b>	0.3%
	KWANGO	0	0.0%	2,302	4.0%	0	0.0%	<b>2,302</b>	1.6%
	KWILU	3,769	4.5%	1,144	2.0%	0	0.0%	<b>4,913</b>	3.5%
<b>TSHIKAPA</b>	KASAI	20,985	24.8%	11,700	20.6%	141	46.5%	<b>32,826</b>	23.2%
	KASAI CENTRAL	77	0.1%	0	0.0%	0	0.0%	<b>77</b>	0.1%
<b>Total</b>		<b>84,497</b>	<b>100.0%</b>	<b>56,853</b>	<b>100.0%</b>	<b>303</b>	<b>100.0%</b>	<b>141,653</b>	<b>100.0%</b>

*Intentions of the Returnees from Angola (majority in villages) per territory and province of origin in DRC.*

Intentions of the Returnees from Angola



*Since the assessments were conducted at the village level, the information that was collected from key informants relates to the groups of returnees who were identified in the village during the assessment. Therefore, data was not collected at the individual level and reflects information relating to groups of returnees from Angola only.*



### Pressure of displacement and return movements on local population

In 60 health areas, IDPs and returnees (internal / from Angola) represent more than 75 % of the local population (DPS estimates). In other words, in these areas, displaced and returnee populations may exert a significant pressure on local population.



Health areas



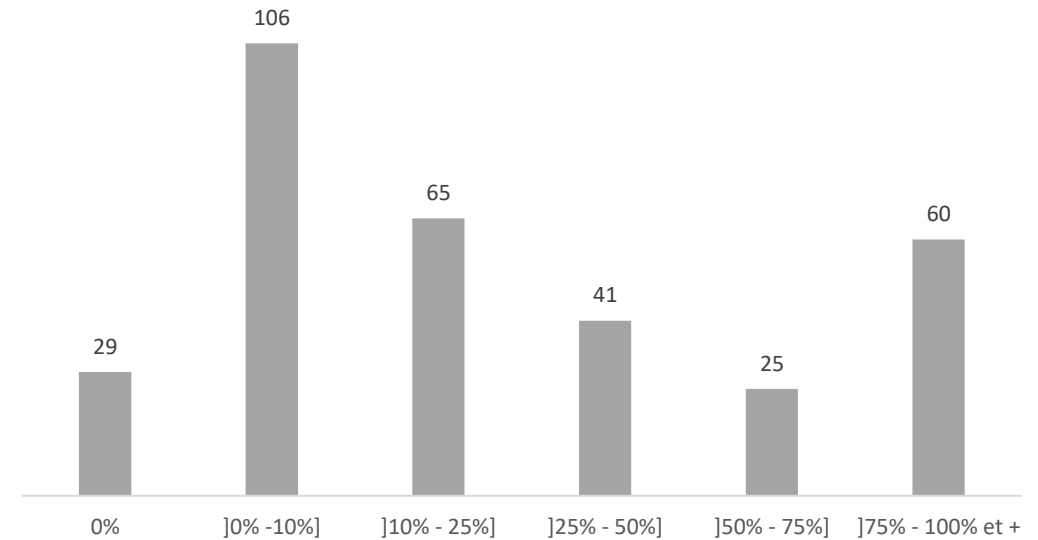
Ratio of displaced and returnee population (internal / from Angola) to local population (DPS estimates) per health zone

- 1.3% - 1.8%
- 1.9% - 7.3%
- 7.4% - 30.7%
- 30.8% - 66.1%
- 66.2% - 97%

Presence of IDPs and returnees (internal/ from Angola) in villages

- IDPs or Returnees
- No IDPs, no returnees (internal), no returnees from Angola
- IDPs, Returnees (internal), Returnees from Angola

Number of health areas per category



Sources: basemap RGC (Référentiel Géographique commun de la RDC), DTM assessment DRC / TDH, July / November 2018. Some geographical limits do not coincide with the data collected in the field. GPS coordinates have not been verified in the field.

Territory	Health zone	Number of villages	Total number of IDPs	Total number of returnees (internal)	Total number of returnees from Angola	% IDP and returnee population /total population (DPS estimates)	Population (DPS estim.)
<b>DEKESE</b>	DEKESE	119	25,955	0	<i>No evaluation of return movements from Angola</i>	15.4%	168,424
<b>ILEBO</b>	BANGA LUBAKA	51	4,624	8,443	<i>No evaluation of return movements from Angola</i>	6.1%	213,500
	ILEBO	151	2,271	10	<i>No evaluation of return movements from Angola</i>	1.3%	179,457
	MIKOPE	45	5,542	112	<i>No evaluation of return movements from Angola</i>	4.9%	115,221
<b>KAMONIA</b>	KAMONIA	209	51,412	112,813	42,736	55.6%	372,077
	KAMUESHA	311	13,642	219,184	11,845	66.1%	370,385
	KITANGWA	139	12,148	7,160	24,190	15.6%	278,102
	MUTENA	124	6,619	263,602	28,898	97.0%	308,273
	NYANGA	164	20,765	562	1,081	17.1%	130,920
<b>LUEBO</b>	LUEBO	303	19,193	103,290	<i>No evaluation of return movements from Angola</i>	56.7%	215,860
	NDJOKO PUNDA	114	9,513	16,880	<i>No evaluation of return movements from Angola</i>	30.7%	86,052
<b>MWEKA</b>	BULAPE	77	564	1,118	<i>No evaluation of return movements from Angola</i>	1.8%	91,670
	KAKENGE	92	1,992	4,273	<i>No evaluation of return movements from Angola</i>	4.2%	150,150
	MUSHENGE	121	1,416	557	<i>No evaluation of return movements from Angola</i>	1.3%	153,789
	MWEKA	102	14,363	1,513	<i>No evaluation of return movements from Angola</i>	7.3%	217,306
<b>TSHIKAPA</b>	KALONDA OUEST	384	113,966	148,564	12,155	73.4%	374,176
	KANZALA	110	89,816	25,669	5,858	38.2%	318,026
	TSHIKAPA	184	57,317	22,405	14,890	30.0%	315,730
<b>Total</b>		<b>2,800</b>	<b>451,118</b>	<b>936,155</b>	<b>141,653</b>	<b>37.7%</b>	<b>4,059,118</b>

*Forced displacement and return movement in Kasai, in November 2018: summary per territory and health zone*

5