

EMERGENCY EVENT TRACKING

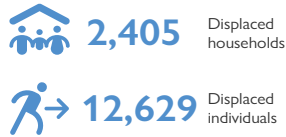
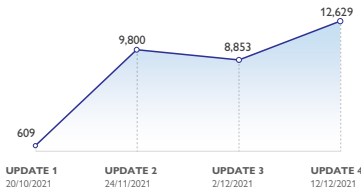
Data collection: 9 December 2021

CONFLICT



The DTM Emergency Event Tracking (EET) is deployed to track sudden displacement and population movements, provide more frequent updates on the scale of displacement, and quantify the affected population when needed. As a subcomponent of the new Mobility Tracking methodology in Sudan (Round Two), and activated on a need basis, EET utilises a broad network of key informants to capture best estimates of the affected population presence per location – a useful tool for humanitarian response planning and design.

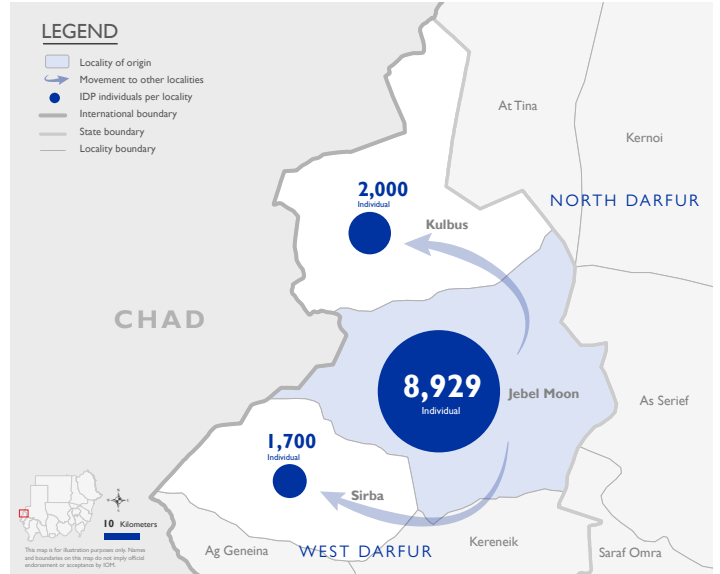
Event Overview



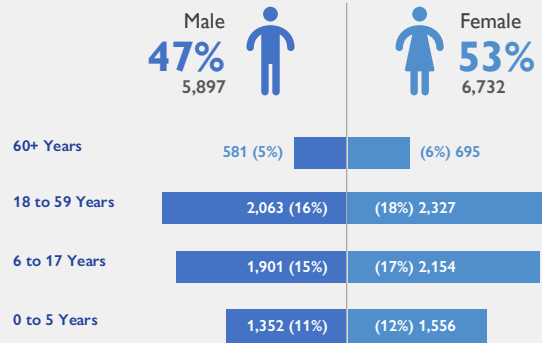
DTM teams activated EET to monitor the displacement of individuals affected by inter-communal clashes between Arab nomads and farmers from the Misseriya tribe in Jebel Moon locality, West Darfur on 9 October 2021 over an issue of land accessibility. Field teams report that all individuals displaced from the first update later returned to their locations of origin. On 20 November 2021, inter-communal clashes escalated further between the two groups in and around Khazan Kajo village, Jebel Moon locality. For more information, please see EET Jebel Moon, West Darfur (Update 003). On 8 December 2021, field teams reported that an additional six villages were attacked and burnt down, contributing further to displacement within Jebel Moon locality and more widely across West Darfur. Field teams also report that some of the displaced caseload crossed the border into Chad.

The fourth EET update estimates that a total number of 12,629 individuals (2,405 households) have been displaced across West Darfur to Jebel Moon (57%), Hajleja (9%), and Selea (5%) villages in Jebel Moon locality, as well as Werywery village (16%) in Kulbus locality, and Jorof village (13%) in Sirba locality. The IDP caseload was originally displaced from Haskenita (16%), Gozmino (15%), Gozjegi (13%), Falco (11%), Umsayala (7%), Umketer (5%), Gradaiya (4%), Korkaro (4%), Haraiya (4%), Arja (4%), Anara (3%), Kafagani (3%), Helat Awen (2%), Hashaba (2%), Gebash (2%), Bada Ganokora (1%), Ammar Jadeed (1%), Berdi (1%), Fareda (1%), Bada (1%), and Tour Nabet (1%) villages.

DTM field teams have confirmed that at least 29 individuals were killed, with a further 13 individuals sustaining injuries. Additionally, at least 1,289 individuals report lost personal belongings and livestock throughout the conflict. All displaced individuals are Sudanese nationals. At least 4,956 cases of additional vulnerabilities in need of further support and assistance were identified through DTM's protection indicator. Consistent with the previous update, and based on a ranking scale, the three main priority needs for the displaced caseload are Emergency Shelter, and Non-Food-Items (NFIs), and Food.



Demographics

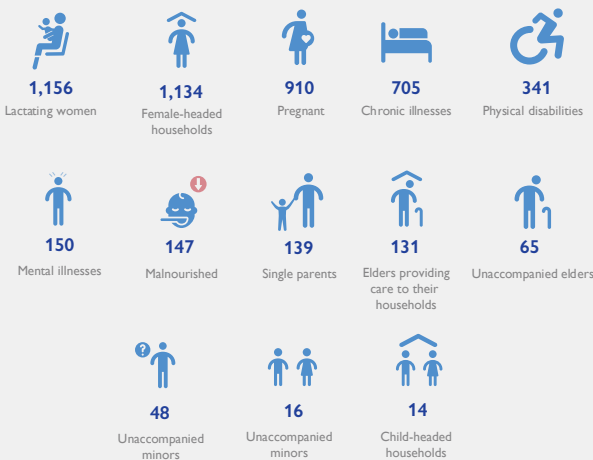


Priority needs

Ranking scale



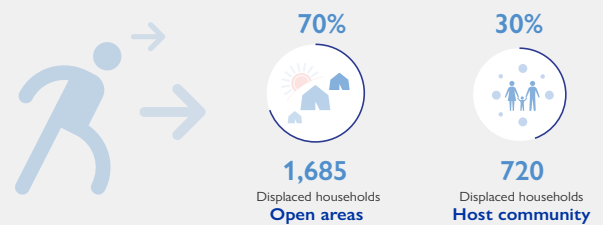
Vulnerabilities



Return Intention

Data collected through the return intention indicator suggests that all IDPs (100%) intend to return to their locations of origin upon improvement of the security situation.

Shelter Indicator



IOM DISCLAIMER

The opinions expressed in the report are those of the authors and do not necessarily reflect the views of the International Organization for Migration (IOM). The designations employed and the presentation of material throughout the report do not imply the expression of any opinion whatsoever on the part of IOM concerning the legal status of any country, territory, city or area, or of its authorities, or concerning its frontiers or boundaries.

IOM is committed to the principle that humane and orderly migration benefits migrants and society. As an intergovernmental organization, IOM acts with its partners in the international community to: assist in the meeting of operational challenges of migration; advance understanding of migration issues; encourage social and economic development through migration; and uphold the human dignity and well-being of migrants.

