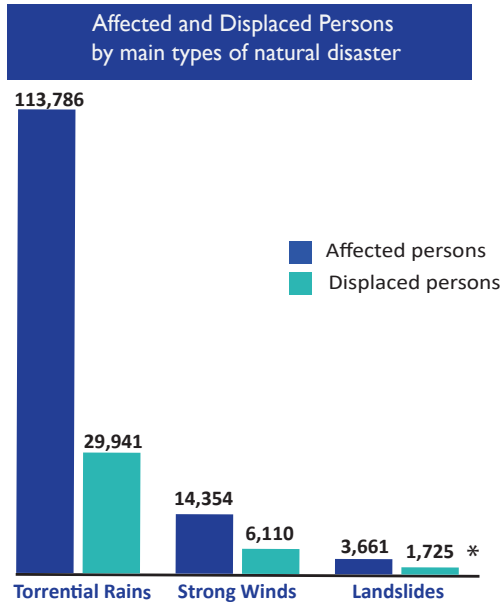


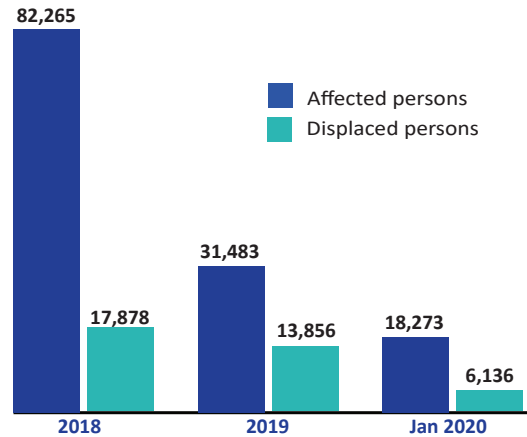
298 natural disasters

were tracked by DTM emergency tracking teams.

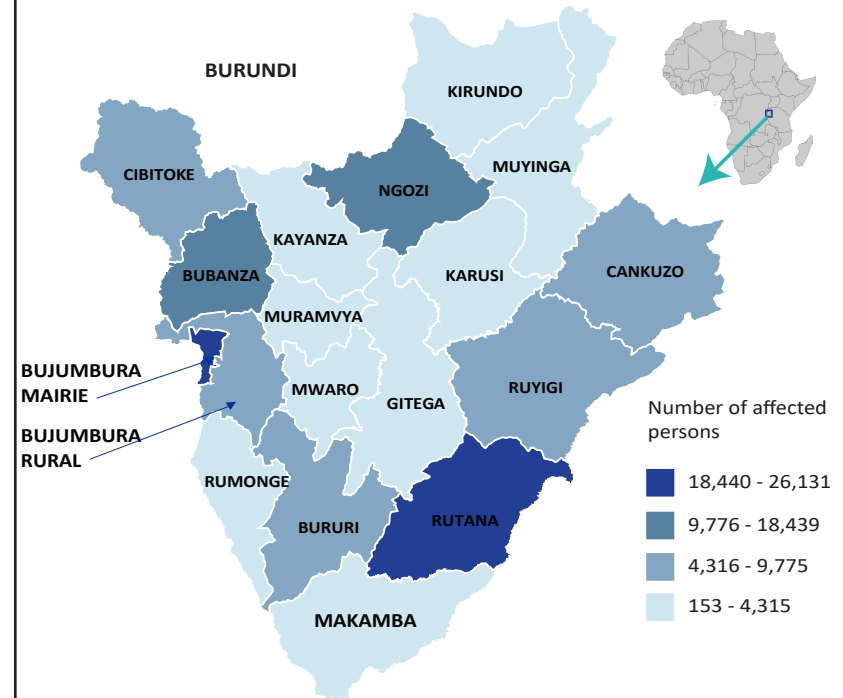


132,021 affected persons 37,870 displaced persons

Affected and Displaced Persons by Period

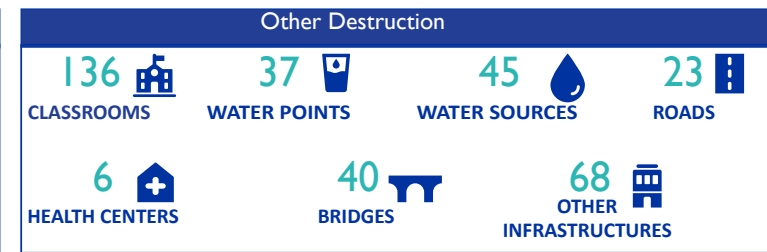
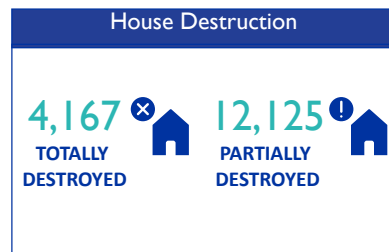
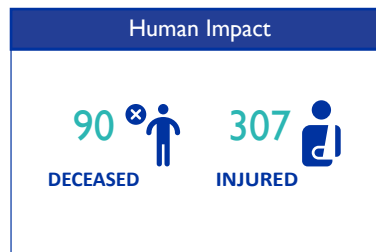
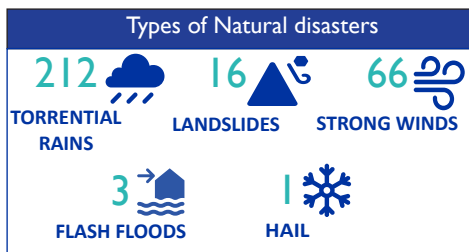


Natural Disaster Affected Population by province



© IOM Burundi - Reference Map (January 2020)

The torrential rains were the most natural disasters that occurred in the country, affecting 113,786 persons in the last two years including 29,941 persons displaced. The main provinces affected by the natural disasters during this period were Bujumbura Mairie (26,131 affected persons) and Rutana (18,440 affected persons). Those natural disasters have caused severe human impact and lot of infrastructures destruction.



METHODOLOGY

The Emergency Tracking Tool aims to collect information on large and sudden population movements. Information is collected by enumerators (Red Cross volunteers) through key informant interviews or direct observation. Two enumerators per commune are in charge of emergency surveillance and report any emergency events occurred within twenty-four hours to the supervisor. After verification, the emergency events are shared with partners through the Whatsapp group (to inform partners on time for any emergency assistance). Every monday, a weekly dashboard is compiled and published regarding the emergency events which have taken place from Sunday to Saturday of the previous week (only severe events are published).

This overview provides information on natural disasters which occurred from January 2018 to January 2020.

* Besides the main type of natural disasters represented above, 184 persons were affected (73 persons displaced) due to the flash floods, 36 persons were affected (21 persons displaced) due to the hail.