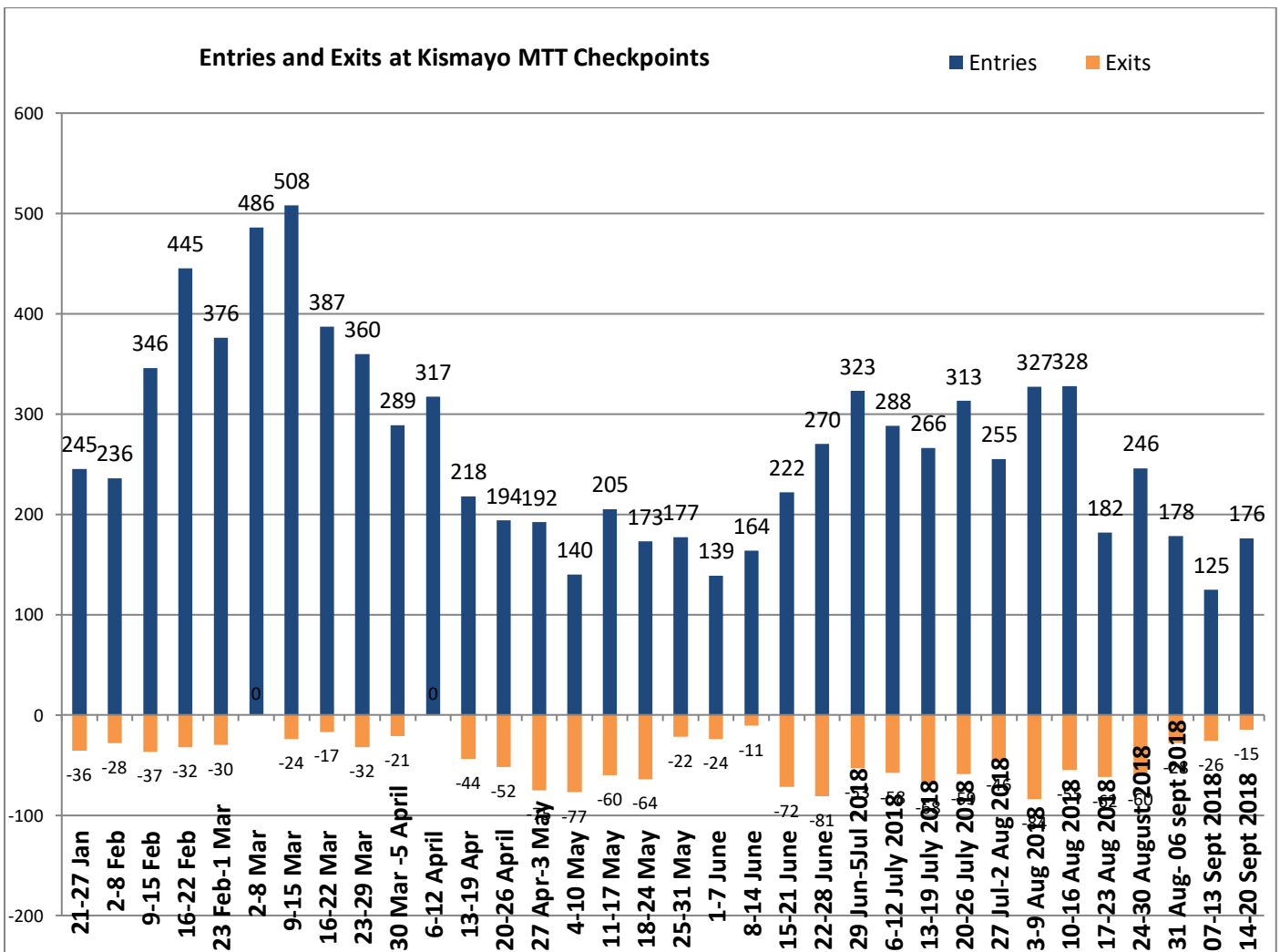




## KEY MESSAGES

- Over the reporting period, a total of 176 persons of new entries went through the Kismayo checkpoints. The figure shows a slightly higher as compared with last week. On the same note a total of 15 exits were recorded that left the IDP camps.
- Majority of the new arrivals (67%), cited the reasons for displacement into the IDP sites as insecurity while (33%) reported to be seeking food.
- The new arrivals came from the districts of Jamame (38%), Kismayo (24%), Badhaadhe (17%), Jilib (14%) and Kenya (7%). They were heading to IDP sites in Galbet Section (48%) “20 households “which is on the west side of Kismayo town. As for the rest, 36% were heading to Dalxiska Section “15 households”, 17% were heading to Central section “7 households”.
- Out of the 3 families exiting the IDP sites, 100%were leaving sites in Dalxiska section, after leaving the sites, these IDPs indicated that they were heading to the district of Kismayo (67%), Jamame (33%) while the main reasons for return was Uncomfortable living condition, and management of farms.



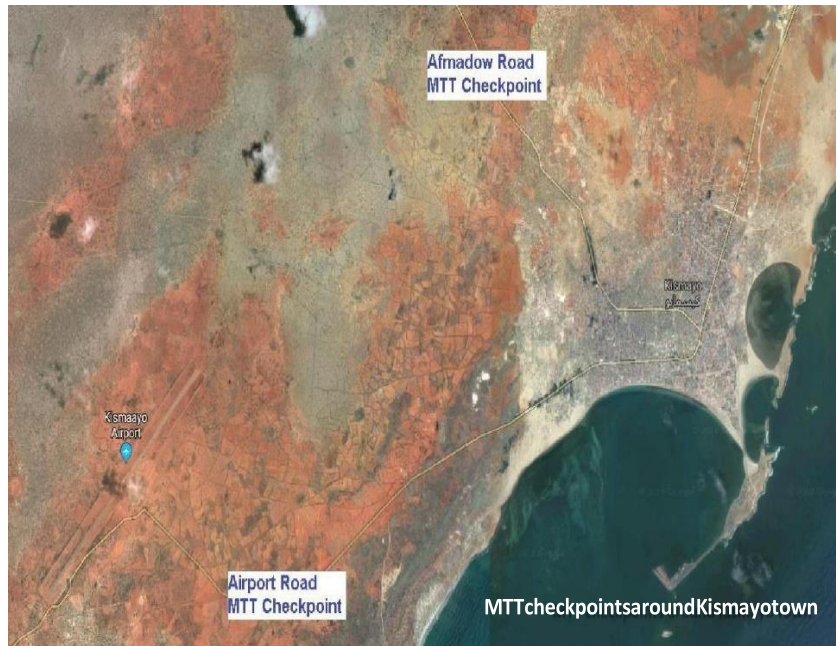
## METHODOLOGY

Movement Trend Tracking (MTT) is a movement monitoring exercise that tracks people who are moving in or out of sites on a semi-permanent or permanent basis. In Kismayo, MTT aims to gauge the pulse of movements in and out of the 145 IDP sites in the town.

MTT figures should not be considered official updates to the population figures of the sites. Rather, the data represents the intentions of IDPs and points towards general trends in their movements.

In Kismayo, IOM enumerators are positioned at the 2 main checkpoints in and out of town from 6:30am until 5:30pm, 7 days a week. From these checkpoints, the teams identify people who are moving in or out of Kismayo with luggage. Interviews are done with the individual or the head of household.

MTT aims to complement existing information management products on displacements and movements in Kismayo, by providing site level specific data on population movements on a regular basis, to assist agencies operating in sites and settlements with key information on: demographics of movement, area of origin, area of return/onward movement, reasons for movement and movement trends over time.



MTT Enumerator interviewing IDPs exiting in Kismayo on foot Last week, @Abdiwali, IOM Somalia 2018.