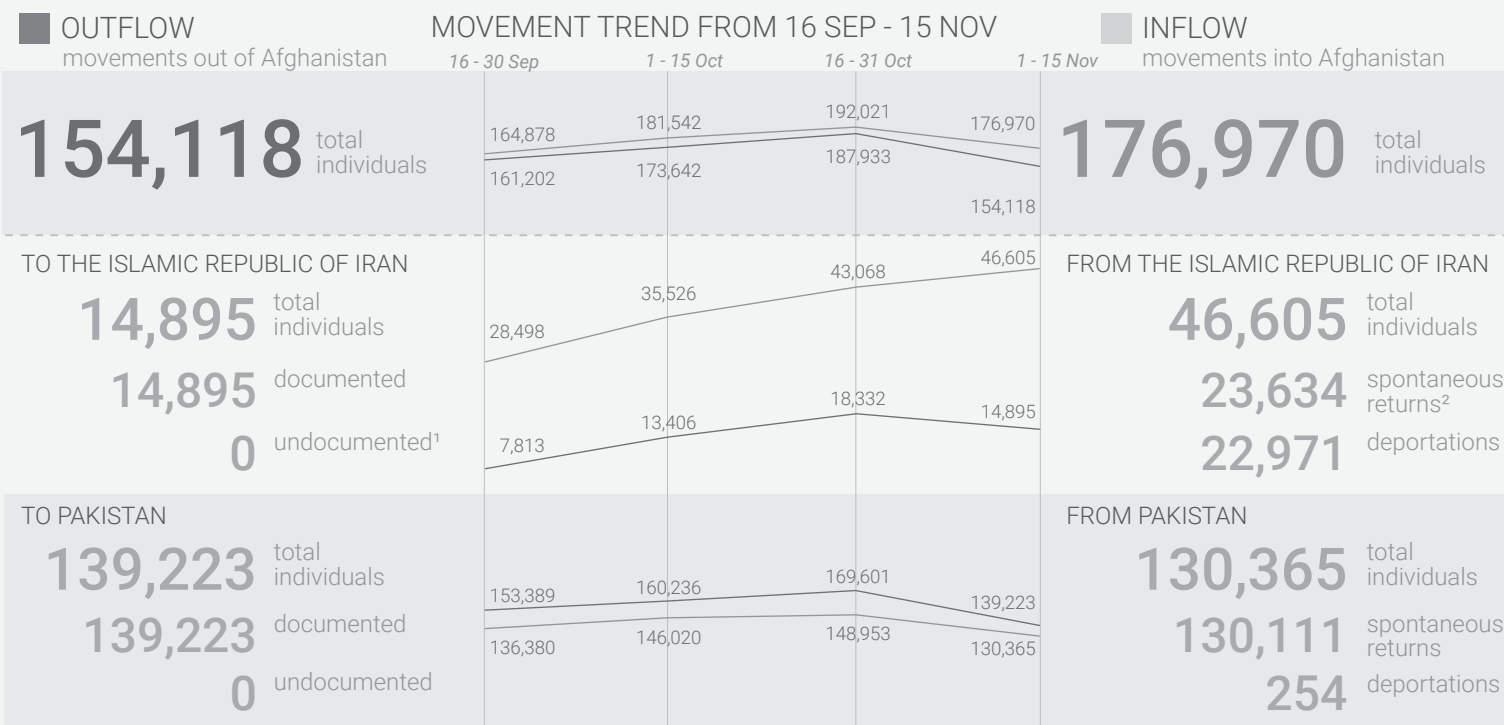


MOVEMENT SUMMARY - AFGHANISTAN TO AND FROM NEIGHBORING COUNTRIES

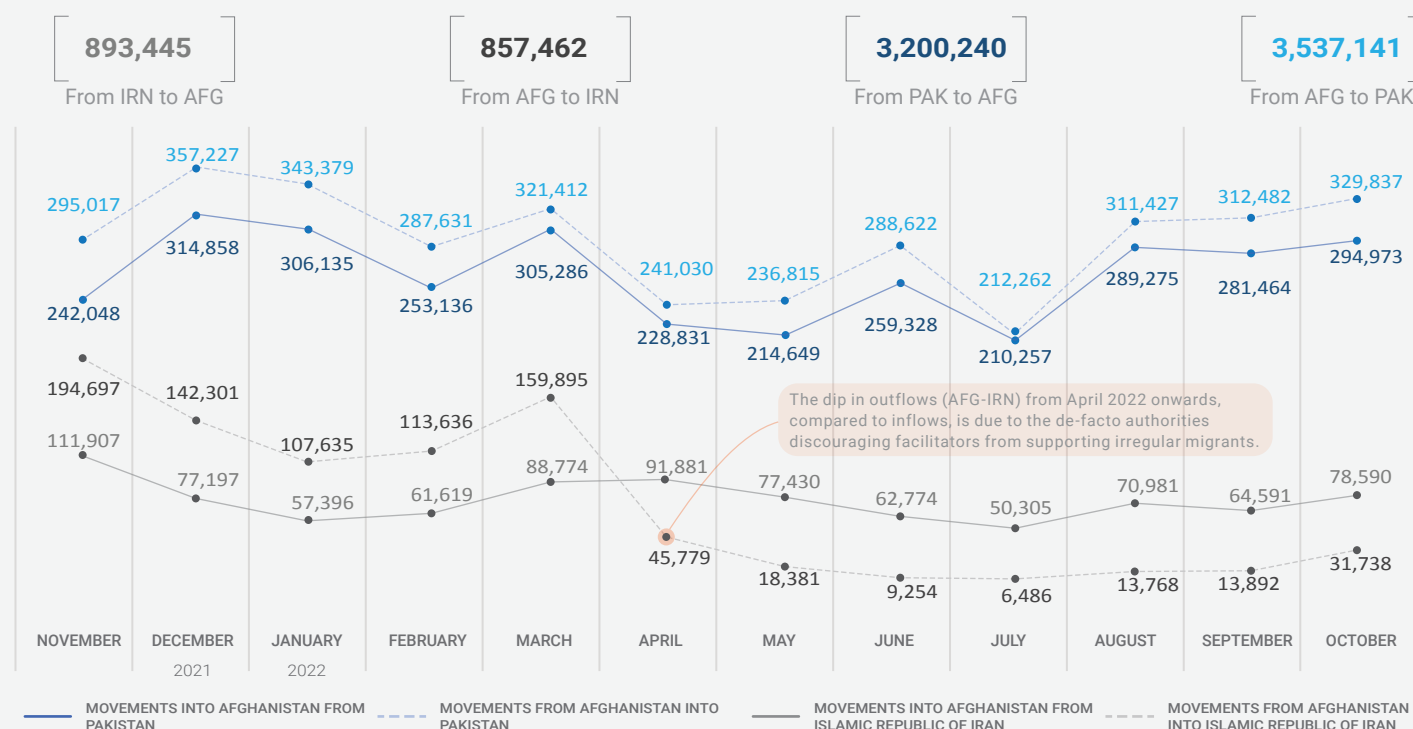
Acknowledging the deep rooted generosity of the people and the governments of the Islamic Republic of Iran and Pakistan for hosting millions of Afghan migrants and refugees for over four decades, this document captures present mobility and displacement trends between Afghanistan, the Islamic Republic of Iran and Pakistan.



THIS PERIOD'S HIGHLIGHTS

- The reporting period observed an increase in inflow movement between the Islamic Republic of Iran and Afghanistan, with 46,605 individuals compared to 43,068 during the previous two-week period. However, the outflows decreased from 18,332 to 14,895 during this reporting period.
- Crossings between Afghanistan and Pakistan decreased in both outflows and inflows, with an average of 9,282 outflows per day compared to 10,600 in the previous two-week period and an average of 8,691 inflows per day compared to 9,310 in the previous reporting period.

TRENDS OF MOVEMENT IN AND OUT OF AFGHANISTAN IN THE LAST 1 YEAR (NOV 2021 - OCT 2022)



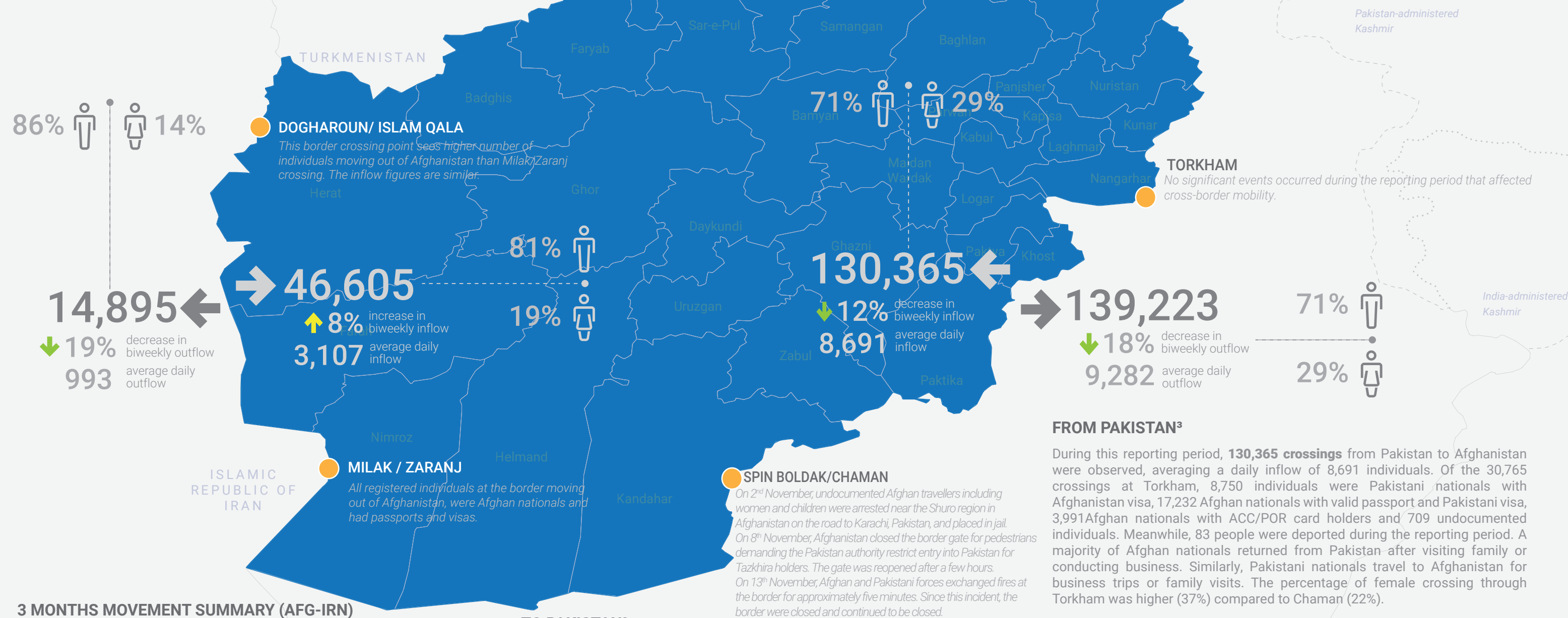
FROM ISLAMIC REPUBLIC OF IRAN

The movements from the Islamic Republic of Iran into Afghanistan increased from 43,068 in the previous two weeks to **46,605** during this reporting period. IOM assisted 8,576 returnees, of which **6,908 (81%) were male and 1,668 (19%) were female**. During this reporting period, 49% (22,971) of all crossings of Afghan nationals from the Islamic Republic of Iran to Afghanistan were deportations. The remains of 56 Afghan nationals, who reportedly died due to accidents and natural causes, were repatriated during the reporting weeks.

TO ISLAMIC REPUBLIC OF IRAN*

Movement towards the Islamic Republic of Iran decreased during the past two weeks, from 18,332 to **14,895**. An average daily crossing of 993 people was reported, of which one out of five are of circular nature. A breakdown of available gender disaggregated data indicates that **86% were male and 14% were female**.

* The number of individuals crossing into Islamic Republic of Iran from Afghanistan can vary from those reported by UNHCR. This can be attributed to the difference in data collection processes. UNHCR data is derived from mechanisms which record population(s) approaching UNHCR in the Islamic Republic of Iran while IOM data relies on information received by community focal points in communities in Afghanistan.



BASELINE MOBILITY ASSESSMENT (BMA) AND EMERGENCY COMMUNITY-BASED NEEDS ASSESSMENT (eCBNA)

The BMA assessment tracks mobility, provides information on population estimates, locations and geographic distribution of displaced, return and migrant populations, reasons for displacement, places of origin and periods of displacement. The CBNA documents vulnerabilities and multisectoral needs. Data is collected at the settlement level, through focus group discussions with community focal points and direct observations. Round 15⁴ of the BMA and eCBNA were conducted in March and April 2022.

IDP ARRIVALS

1,804,363 Jan 2021 - Apr 2022
5,894,220 2012 - 2022 (April)

Arrival IDPs are Afghans who fled their communities of origin and have arrived in the assessed locations within Afghanistan as a result of, or in order to avoid, the effects of armed conflict, generalized violence, human rights violations, protection concerns, or natural and human-made disasters.

INDIVIDUALS MOVED ABROAD

2,516,105 Jan 2021 - Apr 2022
5,676,122 2012 - 2022 (April)

Afghans who have moved abroad from the assessed location, regardless of the reason or duration of the expatriation. This category includes individuals in need of international protection, and economic migrants who have left Afghanistan.

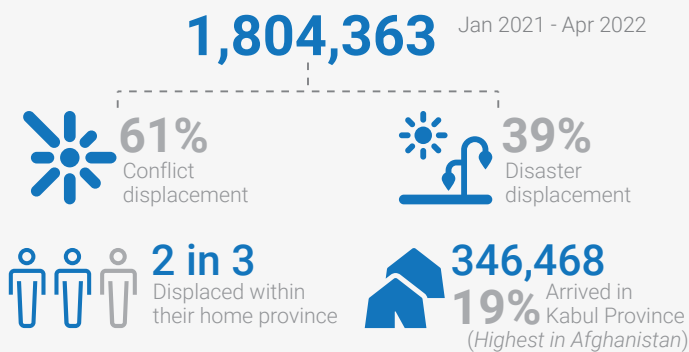
INDIVIDUALS RETURNED FROM ABROAD

1,092,692 Jan 2021 - Apr 2022
5,737,462 2012 - 2022 (April)

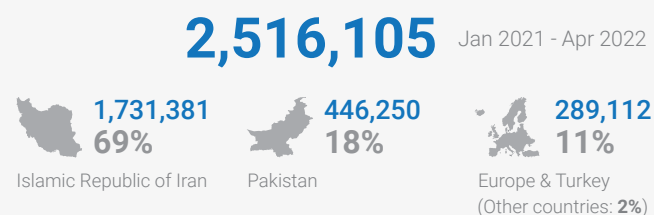
Afghans who have returned to the assessed locations after having spent at least six months abroad. This includes both documented and undocumented returnees.

MAIN FINDINGS (As of 30 April 2022)

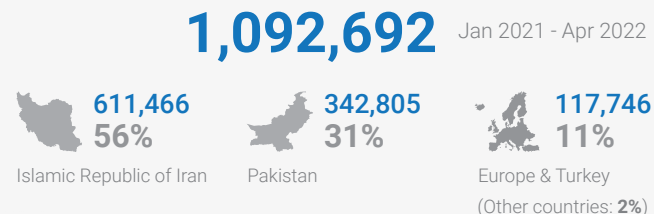
ARRIVAL IDPs



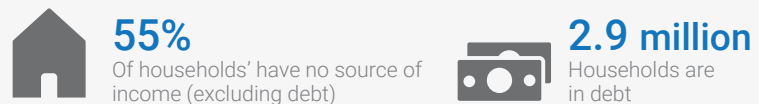
INDIVIDUALS MOVED ABROAD



INDIVIDUALS RETURNED FROM ABROAD



FINANCE AND ASSETS



FOOD AND NUTRITION



⁴ BMA and eCBNA Round 15 Report

The boundaries and names shown on this map do not imply official endorsement or acceptance by IOM. Line of Control: Dotted line represents approximately the Line of Control in Jammu and Kashmir agreed upon by India and Pakistan. The final status of Jammu and Kashmir has not yet been agreed upon by the parties

Creation date: 23/November/2022 | Data sources: IOM DTM, DTM BMA/CBNA, IOM CBR, DoRR | Map data: IOM, OCHA, UNHCR | INDEX: RDH10096 | This document was produced with the financial assistance of the Czech Republic, the European Union, the Government of Japan, the Swiss Cooperation Office. The views expressed herein can in no way be taken to reflect the official opinion of the aforementioned donors.