



Affected Population:
1,558 Individuals



Damaged Shelters:
16



Casualties:
39

Movement Trigger:
Attacks/Floods

OVERVIEW

On 12 September, armed bandits reportedly attacked the communities Gidan Illo in Magaji Gari ward and Baruda in Bardoki ward. Both communities are located in Gummi LGA in Zamfara state. The attacks affected 553 individuals and led to the displacement of 551 individuals from their respective communities to Government Unity School Camp in Shiyar Rafi ward, also in Gummi LGA. As a result of the attacks, 2 fatalities and 20 injuries were reported.

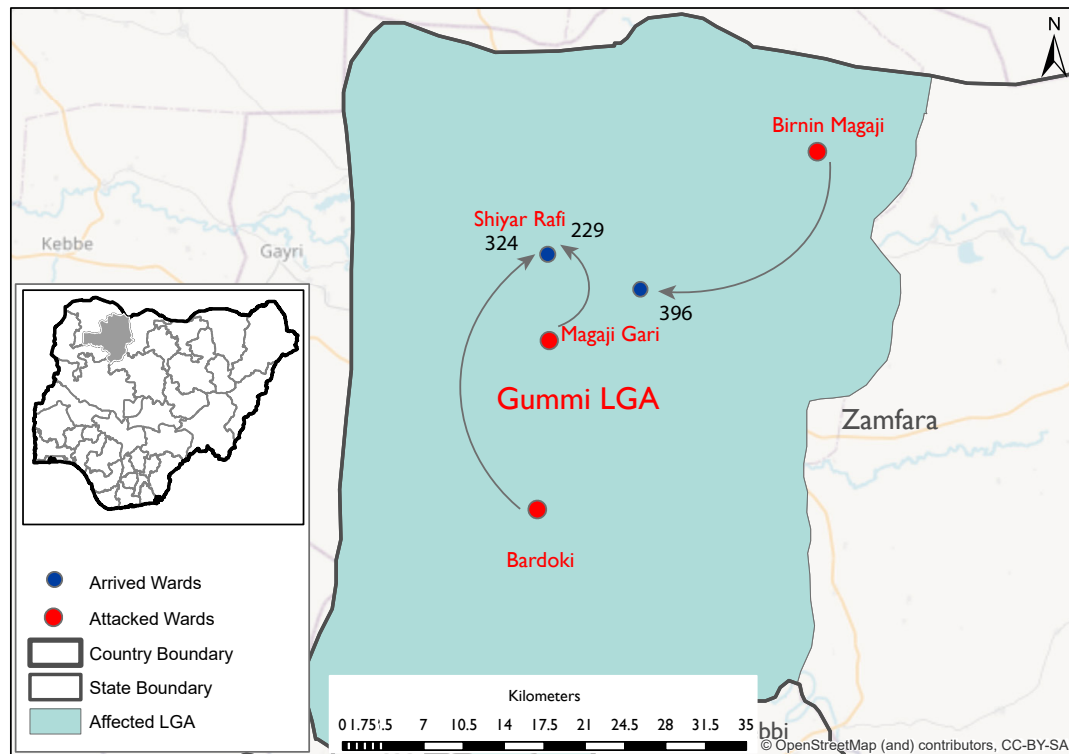
Also, on 13 September, armed bandits reportedly attacked Duddai community in Birnin Magaji ward of Gummi LGA in Zamfara state. This attack displaced 396 individuals from their community to Gummi Primary School in Magaji Gari ward of Gummi LGA. As a result of the attack, 2 injuries were reported.

On 17 September, floods caused by heavy rainfall were reported in the Tudun Matawali community in Wakili Kudu III ward of Katsina LGA and Matalawa community in Agayawa ward of Ingawa LGA in Katsina state. This affected 609 individuals who were displaced to neighbouring shelters in Sabon Unguwa community in Wakili Kudu III ward and Garin Yandoma community in Yandoma ward. As a result of the floods, 15 injuries were reported.

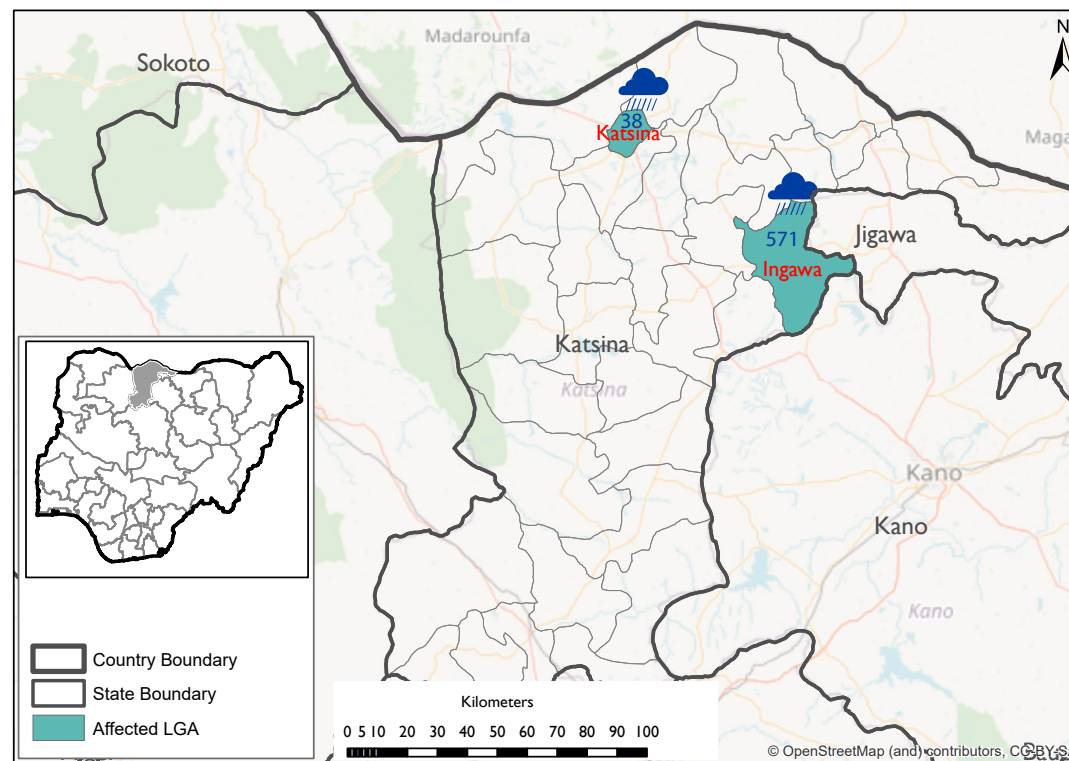
Following these events, rapid assessments were conducted by DTM (Displacement Tracking Matrix) field staff to inform the humanitarian community and government partners to enable targeted response. Flash reports utilise direct observation and a broad network of key informants to gather representative data and collect information on the number, profile and immediate needs of affected populations.

Nigeria's north-central and north-west zones are afflicted with a multi-dimensional crisis rooted in long-standing tensions between ethnic and religious groups and involves attacks by criminal groups and banditry/hirabah (such as kidnapping and grand larceny along major highways). During the past years, the crisis has accelerated because of the intensification of attacks and has resulted in widespread displacement across the region.

LOCATIONS ATTACKED

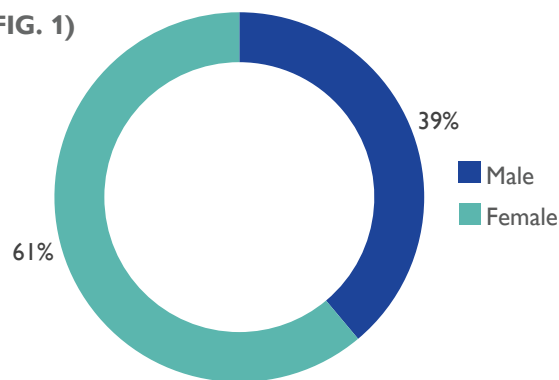


LOCATIONS FLOODED

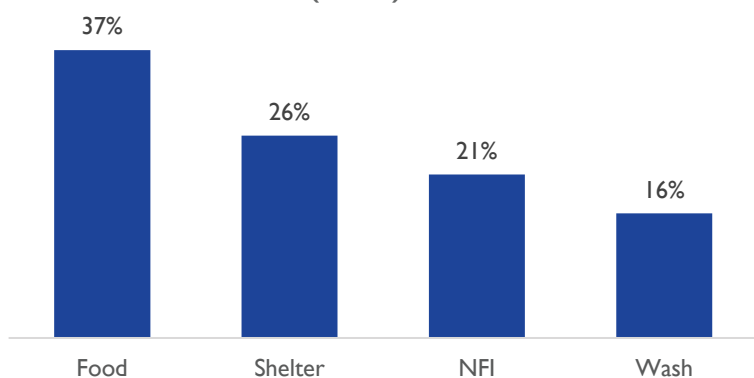


The above maps is for illustration purposes only. The depiction and use of boundaries, geographic names and related data shown are not warranted to be error-free nor do imply a judgment on the legal status of any territory, or any endorsement or acceptance of such boundaries by IOM. The above figures stated on the map refers to the total number of individuals affected, which includes the number of displaced persons and the fatalities recorded in the affected LGAs in the north-central and north-west region of Nigeria.

GENDER TOTAL (FIG. 1)



MOST NEEDED ASSISTANCE (FIG. 2)



State	LGA	Cause of Incident	Number of Affected Households	Number of Affected Individuals	Casualties	Male	Female	Children	Number of damage shelters
Katsina	Katsina	Rainfall	7	38	2	17	21	26	3
Katsina	Ingawa	Rainfall	97	571	13	266	305	375	13
Zamfara	Gummi	Attack	101	949	24	323	626	594	0
Grand Total			205	1,558	39	606	952	995	16

"When quoting, paraphrasing, or in any other way using the information mentioned in this report, the source needs to be stated appropriately as follows: "Source: Displacement Tracking Matrix (DTM) of the International Organization for Migration (IOM), Nigeria Mission, September 2022.""